



# THE LOOKOUT

## We're Gonna Party Like It's 1935!

We're Throwing a **Hootenanny** to Celebrate our **80th Anniversary**  
**Saturday, July 18th from Noon to 5 PM.**  
**Everyone is Welcome**

It was 80 years ago that a like-minded group of Mt. Tam residents banded together to get Panoramic Highway paved. Their success at convincing the Board of Supervisors to improve the quality of life in the neighborhood encouraged them to formalize and become a proper neighborhood association, then called the Muir Woods Park *Improvement* Association. In 1950, we were granted our magnificent piece of land on Ridge Avenue, with 360-degree views of the ocean, mountain, bay and woods.



We'll also have an old-fashioned pie-baking contest [show off your baking skills!], and guests are encouraged to dress in your 1930's best.

In addition we'll have kite flying, the Throckmorton Fire Engine, a restored 1935 Ford truck, and liquid libations to loosen up the tongue and dancing feet!

Party volunteers needed! Please contact our president Keith Papulias at [metropole@sbcglobal.net](mailto:metropole@sbcglobal.net)



**The Board of the MWPCA cordially invites all neighbors** to come celebrate this momentous occasion at our beautiful clubhouse, located at 40 Ridge Avenue off Panoramic. We'll be serving Pappy's Famous Tri-Tip sandwiches, chicken sausage, hot dogs for the kids, desserts and all kinds of delicious sides. Feel free to bring something to share with your neighbors.

For entertainment, we've got **The Dried Up Bones**, the local bluegrass band playing feet-stomping, hand-clapping classic bluegrass that will fill the mountain air and make you want to dance.

SAVE THE DATE



MWPCA ANNIVERSARY  
CELEBRATION

JULY 18, NOON- 5 PM

Create a Fire Safe Defensible Space Around Your Home. Dispose of the Cut Vegetation Material for Free!



2015 CLUBHOUSE EVENTS

- July 11, 12 Free Green Waste Chipper Days
July 18 Noon - 5pm Summer BBQ & MWPCA 80th Anniversary
August 1 11am-6pm Artists of Mount Tamalpais Art Fest and Sale
October 4 1pm - 6pm Jazz Fest
Nov 13 6pm Annual Meeting and Election
Dec 13 6pm Adult Holiday Party
Dec 20 3pm - 5pm Children's Holiday Party

Free Green Waste Days July 11-12, 2015



Collection and Chipping located at Muir Woods Community Center, lower gravel parking lot.

Saturday and Sunday July 11-12, 2015 9:00am to 5:30pm

This is your opportunity for free and safe disposal of green waste yard materials such as branches, grass and light brush. Please, no building materials, general debris, garbage or palm trees.

For information, call 415-388-5414

Sponsored by MWPCA, Marin County Fire Department, Mill Valley Fire Department, and FIREsafe MARIN.

MOUNT TAM PURLS Last Wednesday of the Month 3:00-5:00 PM

Calling all knitters! Come join in the fun. To receive reminders contact Lila Sparks-Daniels at lilasd@aol.com for meeting locations and to get on the email distribution list.

Important Phone Numbers

Throckmorton Ridge Fire Station

Non-emergency 415-388-5414

Sheriff Department

Non-emergency 415-332-5422

Cell Phone call to 911 within Marin County

Local dispatch 415 -472-0911

## A Brief History Lesson...

People make history and it might be said that the landscape creates history. In the words of Howard Winn, a long time resident and philosophical guru of the mountain, "We live on Nut Hill." The mountain had for a long time attracted the dreamers and the offbeat. Such luminaries as Jack London, Jerry Garcia, Lovin' Spoonful, Don Sherwood and Mimi Farina can be counted amongst its citizens.

Early on, the land was in the hands of the economic shakers and breakers. En masse, the land was broken down into lots of 25 x 100 feet, with the thoughts of selling them as cabin-size lots for people from the city. That being a non-doable, the lots were offered to new subscribers to the S.F. Call Bulletin. People received the lots, but many did nothing with them and they just sat. Mind you this division of land took place prior to 1910. Roads were near to non-existent and those that were mapped out were geared not for cars, but for horse and buggy. And for walking. That is why today we have some paper streets and some very convenient easements. Some individuals were farsighted enough to put together several 25 x 100-foot lots and create some very nice pieces of land.

Out to the west of what is now Panoramic there were several Portuguese dairy farms. You can still see the redwood posts with rusted barbed wire hanging from them. Dias Ranch and the wild curve headed down to Tam Valley is an example of that era. There still exists a stock tunnel under the road about 200 feet up from the bend. Below Panoramic between Washington Park and St. Jude an old dairy truck still sits and many a mountain kid has jumped on it and attempted to drive it away.

Many early settlers were of foreign origin. The hiking clubs attracted people to the mountain, and they felt at home since it reminded them of Bavaria or Switzerland or Scandinavia. You can see some of the European influences in the design of the older houses, some of them crafted by immigrants from the continent. If you look at the last house on Marin View you will see that the Heidelmanns, who had the house built to their desires, brought with them a bit of Bavaria. The Nature Friend's Club down the valley was done with all volunteer labor

from the men who were in crafts guilds in San Francisco, but were trained in Europe.

Although people have come and gone in our neighborhood, there has always been a core group who have acknowledged and learned from the people who came before us. They have been drawn by the beauty of the area and have fought hard to preserve it.

- Jim Bramell

---

### Looking Back at MWPCA's 50<sup>th</sup> Anniversary

More of these photos taken by Suki Hill at the Clubhouse in 1985 can be viewed at [mounttam.org](http://mounttam.org)



Howard and Stella Winn, 1985



Helen and Adele, 1985

## MWPCA Nominating Committee Needs Your Input

The nominating committee for the Muir Woods Park Community Association is looking for people to serve on the MWPCA Board and also for volunteers to serve on committees for the year 2016. The Board meets on the second Tuesdays of most months.

Two Board positions will need to be filled – Membership and Communications – since Judy Sparks Graham (Membership) and Lila Sparks-Daniels (Communications) are stepping down. The Board would like, if possible, to find people with skills and/or interest in those areas. If you would be willing to serve in either capacity, please contact any of the members of the nominating committee listed below.

The nominating procedure is as follows: The nominating committee will present a proposed slate of candidates at the September 10 Board Meeting for approval. The slate will be published by the Board and ballots sent to all dues-paying members. Ballots will be counted at the November 13 general meeting and potluck dinner, and the 2016 Board will be announced.

The Board also needs committee members to help with:

- Social events (St. Patrick's Day Dinner, Christmas Party, Jazz Fest)
- Children's activities (Easter Egg Hunt, Santa's Visit, Pumpkin Carving)
- Emergency preparedness (block captains)
- Communications (website support, signage for special events, photography, contributing to the Lookout newsletter)
- Facility maintenance and rentals
- Implementation of new ideas (movie night, music enjoyment, writers group, succulents group, etc.)
- Membership

Please contact any of the following people during the next few weeks of your interest or for more information:

Susan Johnson: [susancaj@comcast.net](mailto:susancaj@comcast.net)

Faybeth Diamond: [fbdlive@comcast.net](mailto:fbdlive@comcast.net)

Judy Sparks Graham: [jsgrlg@comcast.net](mailto:jsgrlg@comcast.net)

Lila Sparks-Daniels: [lilasd@aol.com](mailto:lilasd@aol.com)

I have loved serving on the Board and was glad to be able to make a contribution to our community. What might yours be?

- Lila Sparks-Daniels  
MWPCA Nominating Committee Chair



Photo by Beverly Anderson

### Muirly Musings from Mia...

Long days of summer...great time to visit Muir Woods and have the trails often to yourself if you visit early or late! A bonus: best time to see wildlife and birds, too! When summer sun bakes everywhere else, think of a cool and shady walk among the redwoods. With a little planning, you could come in one way and out another, taking the West Marin Stage back. What a wonderful service for locals! Speaking of wildlife, we share the awesome slopes of Tam with coyote, fox and bobcat. Please do not approach or feed them and take extra precaution with your pets, especially at night. Check the Muir Woods website often for programs, nature notes and updates on planning work. What a time to take a deep breath of fresh air and enjoy the special views that stretch out to the horizon or intimately down into the canyons...WOW!

-Mia Monroe, NPS

## EMERGENCY/DISASTER PREPAREDNESS

Still no rain! A consequence of another dry year is our increased vulnerability to the possibility of wildfire. The article in the previous Lookout described some of the ever-present conditions of the mountain terrain, and the difficulties we are confronted with should a wild fire happen. A timely message to all is to prepare your property, your family, and your home for an emergency. Work together with your neighbors to help and protect each other. Disaster planning is about staying safe and surviving during and after a disaster.

Where to begin? Assess your home and property. Fire safety is about maintaining your property so that firefighters can reach your home and fight a fire. Are the roads and lanes leading to your home free of bushes, trees, trash? Are cars parked on the sides blocking a fire truck from getting by? The defensible space surrounding your home should total 100 feet. Keep 30 feet clear and 70 feet maintained using 'reduced fuels' vegetation.



Be creative when choosing landscape materials. Use rocks, stone, fire-resistant drought tolerant plants that are easy to maintain. Many of us enjoy the panoramic views from our wood decks. Keep the area under a deck clear. Do not store combustibles like lumber and firewood underneath. Trim trees by removing lower limbs so that they are 10 feet from the ground. Limbs should be cut back at least 10 feet from a chimney and roof.

Emergencies happen without warning. Be prepared to evacuate quickly and safely.



Make plans. Household members should know how to communicate with one another, how to reconnect and what to do in different situations. Our Mountain Emergency Team has worked to create a neighborhood system of street liaisons. If a wild fire begins, the most important course of action is to evacuate *EARLY*. You may have 30 minutes or less to leave.

**If you have to leave.** Create your **Grab & Go Checklist**, which are those items to collect for evacuation, such as copies of family photos and important documents. Place your list in an old backpack and leave it in a closet by the front door. In addition to family photos and financial records, you might add a change of clothes, radio and first aid kit. Don't forget the pets! Your kids should also make their own Grab & Go lists.

Your Grab and Go List is a prioritized list of irreplaceable possessions that you will take if you have time to evacuate. Often called the Top 10 in 10, think about what 10 items you would take if you had 10 minutes to evacuate.

Ideally, you should note the item and where it is located in your house to save time. **You may also want to create a separate list for each family member.**

Keep a copy of all lists in your **Evacuation Backpack** so you can easily locate them during an evacuation. Add to the list as you see fit.

## GRAB and GO List

- Wallet with Driver's License and checkbook
- Credit and debit cards
- Cash in small denominations and change for pay telephones
- Prescription medicines
- Eyeglasses and other medical aids
- Cell phone and chargers (electrical charger, car charger and solar charger)
- Computer or computer backup media with cords (i.e., portable hard drive, USB drive, etc.)
- Emergency Plan contact list with out-of-state contact information
- Copies of current financial accounts
- Safe deposit keys
- Passport
- Family photos/photos stored on CD
- Family heirlooms, jewelry, etc.
- \_\_\_\_\_
- \_\_\_\_\_

\* The Grab and Go Checklist is taken from ReadyMarin.org. More information can be found on the [ReadyMarin](http://ReadyMarin.org) website.

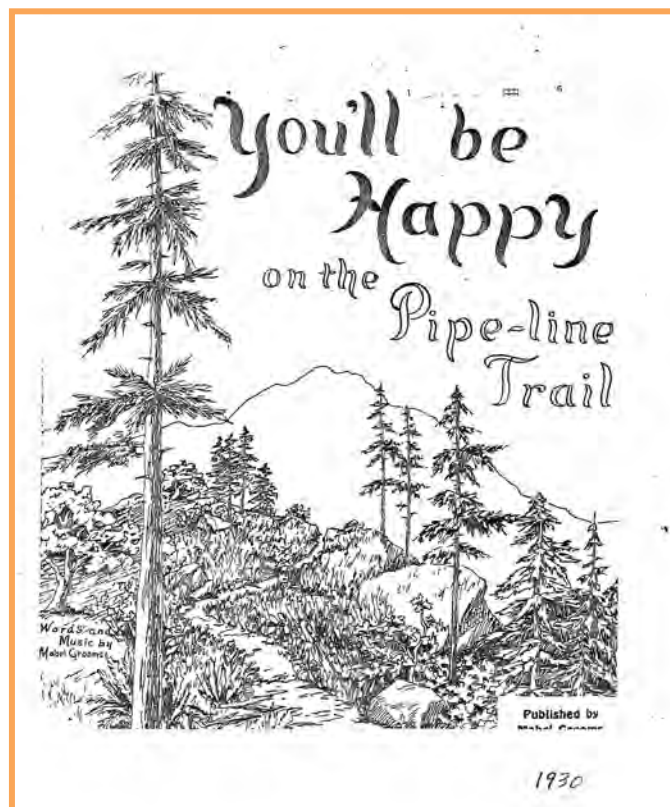
The Mountain Emergency Team encourages all residents of the mountain to reach out to neighbors. There may be people new to your street. Neighbors may have unique or specific needs. Share important information that affects your safety and the safety of others. Helping one another during an emergency is a first line of preparedness. The emergency responder professionals may be unable to respond to individual calls as they may be needed elsewhere in a more urgent situation.

- Susan Johnson



## FOUND TREASURE

You never know what you might find! The son of Tim Salz (who lives above the Pipeline) discovered this musical score written in 1930 by Mabel Grooms for a song titled "You'll be Happy on the Pipe-line Trail." It's a real hoot and might be perfect for our upcoming Hootenanny Celebration! For a look at the complete sheet music with all the words, send an email request to [newsletter@mounttam.org](mailto:newsletter@mounttam.org) and we'll send you a .pdf version. Start tuning your ukuleles!



## In the Fog...

We spent the night at the West Point Inn on the mountain the other weekend, and when we woke



up on a Sunday morning, the world outside the inn's big front porch had pretty much vanished.

The whole bay area it seemed, was covered in fog. Not a building could be seen, not a house, not a bridge, unless you pivoted around north

toward Vallejo, barely visible on the edge of the fogbank. The fog must have been close to 2,000 feet thick.

The sun was shining on Tamalpais, but a whole region of more than six million people had vanished, like a mirage. It was pretty amazing.

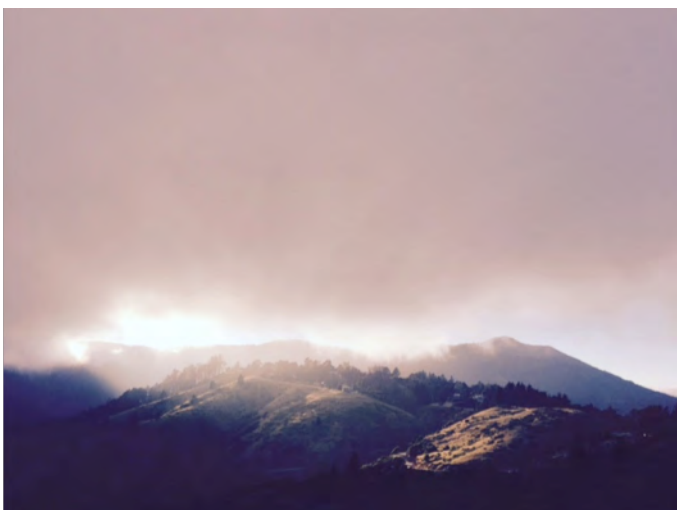


Photo by John Lovell

Summer, of course is the foggy season in this neck of the woods. It comes rolling in like gray surf every afternoon, up Frank Valley, over the Mine Ridge, down into Muir Woods, and up to the little community strung along the Panoramic Highway.

The Muir Woods Park community is famously foggy, and the reason for it is the same reason that makes the place a good place to live: location. The fog is like the ocean: it really is only water in mist form. It looks for its own level. And when it moves in from the ocean, it seeks the path of least resistance, like running water. It likes the Golden Gate, the biggest gap in the coast range.



Photo by Rhonda Dubin

It likes Tennessee Valley; and the fog really likes the low gap in the hills we call the Four Corners, a legendary windblown corner.

Harold Gilliam, who wrote books on the Bay Area weather, identified nine different summer fog formations: wreaths and domes over Alcatraz, arches over the Golden Gate Bridge, eddies and fog falls that look like cascades over the Sausalito hills, surges and combers, rivers of fog, and fog decks, which are fingers of fog that skip over the bay and move into Berkeley.

You can see most of them from the slopes of Tamalpais. But not from Four Corners, which is fog central.

- Carl Nolte



Photo by Rhonda Dubin

## Energy Upgrade California:

### *Energy Efficiency Improves Your Living Space and Pays You Back*

With summer upon us the mercury is rising and many Marin families are looking for ways to make their homes more comfortable. What a lot of families don't know, is that a home improvement project designed to make their home more comfortable in the summer months can also make their home more energy-efficient all year round, and qualify for rebates through Energy Upgrade California® Home Upgrade.

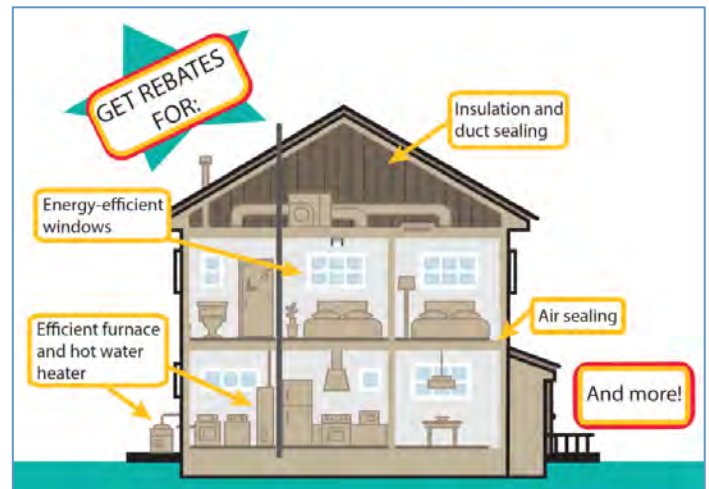
Energy Upgrade California® Home Upgrade offers rebates for energy-efficient home improvements such as air sealing, insulation upgrades, installing double pane windows, and upgrading mechanical systems like your furnace and air conditioning units—all designed to enhance indoor comfort and air quality, lower utility costs, add value to your home, and protect the environment. Energy Upgrade California® Home Upgrade is funded by PG&E and the California Public Utilities Commission, with additional funding from the Bay Area Regional Energy Network and Marin County.

Marin homeowners are eligible for incentives of up to \$6,800 to offset the cost of an upgrade project.

Home Upgrade takes a “whole-house” or systems approach to energy efficiency. The whole-house approach considers the house as an energy system with interdependent parts, each of which affects the performance of the entire system. This approach works well with older homes that can be drafty and in need of insulation improvements

In addition, a free Home Upgrade Advisor can provide direct one-to-one assistance to help homeowners through every step of the upgrade. Home Upgrade Advisors are Building Performance Institute certified energy efficiency professionals who can explain energy efficiency options, help you select an appropriate participating contractor, and help you navigate project installation and financing processes. The Home Upgrade Advisors are sponsored by the program and are not affiliated with any company selling products or services.

You can contact a Home Upgrade Advisor by calling 866-878-6008 or by submitting a brief form at [BayAreaEnergyUpgrade.org](http://BayAreaEnergyUpgrade.org). This site also features a list of participating contractors in the area. Homeowners who are ready to begin their upgrades can contact a participating contractor directly.



Upgrading inefficient homes not only helps individual homeowners improve their comfort, air quality, and utility bills, making your home energy-efficient also benefits surrounding communities and larger regions as a whole. When homeowners reduce energy consumption, they help reduce overall greenhouse gas emissions and pollution, improve economic competitiveness, and foster local job creation.

You can read more about the energy-efficiency programs Marin County is working on here:

[www.marincounty.org/energyupgrade](http://www.marincounty.org/energyupgrade), or contact our offices at (415) 473-2698.

- Kellen Dammann

Marin County Community Development Agency  
Sustainability Team



## Mount Tam Task Force Report:

### Brighter Seasonal Outlook for Muir Woods Traffic?

By summer, a proposed MOU (Memorandum of Understanding) between Marin County Board of Supervisors and the National Park Service for Muir Woods area traffic should take effect. Meetings chaired by Congressman Jared Huffman brought together the National Park Service, County Supervisors Kate Sears & Steve Kinsey, the MTTF (with legal counsel Chris Carr of Morrison & Foerster), and representatives from key neighborhood associations and other stakeholder groups.

Some MOU highlights are:

- 1) Automobile traffic along the flat portion of Muir Woods Rd. (aka Franks Valley Rd.) will be gradually eliminated over 7 years by a phased-in reduction of parked cars, dropping to 80 cars by summer 2016, then 40, 20 etc). NPS will redesign the visitor entry area to gain more parking spots inside the Woods.
- 2) Shuttle bus service will slowly replace cars. Park entry fees will go up to \$10.
- 3) There will also be a reservation system for the new limited parking tied to visitor entry. Parking will cost \$7-10. Tickets will be date and time specific, but cyclists, hikers and local walk-in residents will be free. NPS expects the reservation system to start in 2 ½ years.
- 4) Ownership of Franks Valley Road will stay with the county. The Sheriff 's Dept. will patrol it until January 2016. After that, NPS police will enforce the parking rules, issue citations and arrange for towing. NPS will pay for 2 patrol persons. Clear signage will be in place.

Apart from this MOU, other measures will help mitigate problems caused by Muir Woods tourism. Kate Sears sponsored an ordinance to keep commercial buses out of residential areas. Supervisors also voted to limit bus length to 35 ft. (A safer 25 ft. was strongly requested in public comments and will be reviewed again).

Further modifications to the MOU are currently under negotiation. Still lacking is the NPS cap on visitor load requested by county supervisors (Muir Woods currently has 1 million plus visitors a year!), certain public safety measures, and proper environmental restoration plans.



Many people contributed much time and energy over the last two years to protect the health of the Woods environment, and find solutions to the traffic problems. The MWPCA Board of Directors, under then-president Peter Hindley, took an early leadership role to stop a proposed 180 car paved parking lot on Dias Ridge. MTTF, originally founded in 2002, was reactivated. Chaired by Kristin Shannon and co-chaired first by MWPCA member Steve Thompson then by Bob Wright, MTTF provides a framework for many neighborhood associations to network to have an effective, coordinated strong voice. MWPCA Recording Secretary Nancy Gribler first called for MTTF to “lawyer up” and MWPCA member Diana Williams found lawyer Chris Carr. Legal services were funded by local donations and a matching grant from a generous MWP resident. Morrison & Foerster contributed much pro bono time. MTTF spokesperson for safety issues is MWPCA Director Faybeth Diamond. Other MWP residents who contribute expertise to MTTF: Roel Jonkman crunches numbers and Laura Chariton provides essential facts and statistics on Redwood Creek water and the endangered salmon. Thank you, all.

When a MOU is complete, we could start to see improvements in the popular National Monument and fewer traffic nightmares. The “Gateway” neighborhoods along Shoreline Hwy, Panoramic Hwy, Route 1, and Franks Valley Rd. deserve to look forward to safe routes and sane summers.

- *Faybeth Diamond, Bob Wright, Kristin Shannon*

MUIR WOODS PARK COMMUNITY ASSOCIATION

## Artists of Mount Tamalpais

# ART FEST *AND* SALE

PAINTING • MIXED MEDIA • PHOTOGRAPHY • CERAMICS  
SCULPTURE • WOODWORKING • TEXTILES & MORE!



**AUGUST 1ST 2015 | 11AM-6:00PM**

**MUSIC • REFRESHMENTS • CHILDREN'S ACTIVITIES**  
**MWPCA CLUBHOUSE, 40 RIDGE AVENUE, MILL VALLEY**

Jane Allen  
Beverly Anderson  
Tripp Carpenter  
Etta Deikman  
Rhonda Dubin  
Roy Forest

Glenda Gentry  
Elly Graham  
Teresa Harrison  
Bonnie Himberg  
Andy Lillestol  
John Lovell

Bonnie Neumann  
Woodward Payne  
Linda Sawtelle  
Lila Sparks-Daniels  
Alex Uncapher

For information visit [www.MountTamArtists.org](http://www.MountTamArtists.org)

## ARTISTS OF MOUNT TAMALPAIS



# Art Fest and Sale

On Saturday August 1, 2015 the Artists of Mount Tamalpais will host an Art Fest and Sale from 11am to 6pm at the MWPCA Clubhouse at 40 Ridge Avenue. The one-day-only event will feature many talented artists who live and work on the mountain and belong to the MWPCA, which is also a sponsor of the group.

For the past three years the Artists of Mount Tamalpais have held an Art Trail Walk to visit artists' studios in the area. This year they are holding the event at the Clubhouse, where all the artists will be showing their work in one location for the day. This exciting group of artists, with a wide range of ages and experience, includes painters, mixed media artists, paper artists, photographers, sculptors, textile artists, ceramicists, woodworkers, jewelry makers, and glass artists.

Come meet our talented artists, visit with your neighbors, and peruse the creative and beautiful art made by our local people. This is the only time this year that the group will show at the clubhouse, so be sure to save the date and come and enjoy the festivities.

The artists will be providing refreshments, music and children's art activities at our beautiful Muir Woods Park Community Association Clubhouse overlooking Mount Tam. And there is plenty of free parking, so tell your friends and remind your neighbors!

### CALLING ALL ARTISTS

We are an ongoing group with many activities throughout the year. Come join us!



Contact [linsawt@yahoo.com](mailto:linsawt@yahoo.com) for more info

## MEET THE ARTISTS:

Linda Sawtelle: Ceramicist



### How long have you been creating your art?

I have been fully involved in ceramics since 1976, when I started working in a potter's studio in San Francisco, making glazes and sweeping his floor in exchange for being able to take classes.

### Tell us a little about your medium and process.

I work in clay, mostly hand-building sculptural pieces. But I do love to throw bowls and plates too. I have worked in all types of clay, from low-fire raku to high-fire stoneware, porcelain to sculpture clays. Now I work in

co  
ne  
6  
cla  
ys  
an  
d I  
fir  
e  
in  
an  
ele  
ctr  
ic  
kil  
n.



Ceramics by Linda Sawtelle

My work just comes out of me, from deep within. When I am in the studio I feel I am really myself, just being in and enjoying the moment. I am completely in the present moment when I am building sculptures in clay.

### What inspires you creatively about living on the Mountain?

The nature around us on Mt Tam and the wild weather feed my soul and bring much joy to me. I have no desire to live anywhere else. This is the most beautiful place in the world in my eyes.

### What has the experience been like for you being a member of Artists of Mount Tamalpais?

The artists' community we are building up here on the mountain has enriched my life in many ways. I have really enjoyed meeting the wonderful people who make up the group, and we have a lot of fun together. At meetings we see and discuss each other's work which helps me grow and expand my awareness in the possibilities of making art. This forum is invaluable in my life and not one I have had before. Plus the exposure that the group is getting is inspiring

### Roy Forest: Sculptor/Painter

#### How long of you been creating your art?

Twenty years plus.



#### Tell us a little about your medium and process.

I've made a move over to painting and mixed media, from steel sculpture. This is a result of wanting more color variations in my work, and I was limited by steel sculpture. After painting for

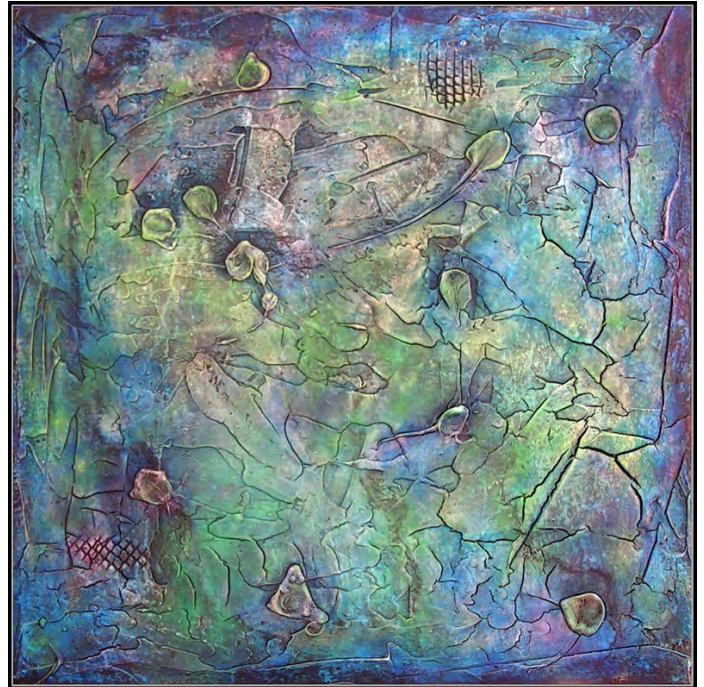
over a year, I started adding modeling pastes for texture, which led me to develop my own paste/cement, which allows me great textures and control... I've been painting over that recently and seem to have found my ideal combination of mediums.

#### What inspires you creatively about living on the Mountain?

Every sunrise... every fog, rain, wind storm, and just being 'away' from downtown... There are many days that I don't get in my car and I just stay up here.

#### What has the experience been like for you being a member of Artists of Mount Tamalpais?

Mostly fantastic. I've met some really great friends and spouses of artists and feel an even stronger bond living up here.



Painting by Roy Forest

### Elly Graham: Drawing

#### How long of you been creating your art?

I started drawing as soon as I was old enough to hold a crayon, and ever since I've been playing with one 2-dimensional form of art or another. Photography was my medium of choice while earning a BFA. For the past 20 years or so, I've worked primarily in pastel, first drawing abstracts, then models and portraits, and more recently landscapes of New England.

#### Tell us a little about your medium and process

Pastels are a lovely, soft form of chalk that come in beautiful colors. I use it as a drawing tool, with no under-painting. When figures were my subject, I would spend



two afternoons drawing from a live model, and then hours working on finishing touches and a background. Now that landscape is the subject, I work from photographs, often modifying or

combining different scenes. Although something is lost when not working from a living subject, there is gain in the clarity of emotional reaction and the selectivity of



Drawing by Elly Graham

memory. Not to mention avoiding changeable weather and light, and the worrying threats of a growing tick population.

### **What inspires you creatively about living on the Mountain?**

During an interim period when we returned to live back east, I had vivid dreams of longing for the roller-coaster landscape surrounded by sea that I had discovered here.

The landforms that surround us and the enormous variety of growing things provide endlessly stimulating shapes. And then there's the amazing sense of space and glorious sunset colors to see from my house on Panoramic Highway.

### **What has the experience been like for you being a member of Artists of Mount Tamalpais?**

For the most part, artists work a lot in isolation, or at least I do, and life on the mountain can be very private. It has been a real gift to discover and get to know this group of interesting, accomplished, creative, warm, supportive and like-minded individuals, and a great pleasure to work with them on common endeavors.

### **Tripp Carpenter: Woodworker**

#### **How long of you been creating your art?**

My father put me on the wood lathe at age six and ever since then I have been working with wood. So I guess it has been 54 years now of continuous wood mongering.

#### **Tell us a little about your medium and process**

My medium is wood with all its complexities and

variations and dust! The process of making with wood is a simple act of patience. With a little time and focusing on letting the wood speak for itself, usually one can come up with something beautiful and interesting that can be used in every day life.

### **What inspires you creatively about living on the Mountain?**

My environment has been crucial in my outlook on the world. I have always tried to at least maintain and maybe add, if I can say that, to the aesthetics, which surround me. I look at the past and see all the magnificent everyday useful things ours indigenous predecessors made and used. I look at the Golden Gate Bridge as a very rare example which modern man made that actually adds to the beauty of its surrounding. As we as a people stop looking and drift away from our roots based in the deep spiritual beauty of nature, some of us may still feel and see the beauty and look up from the computer occasionally to express it in various pleasing aesthetic forms.



### **What has the experience been like for you being a member of Artists of Mount Tamalpais?**

Our group of artist on Mt. Tam has been a blessing for me. We have a small community with some common goals such as putting on shows and getting together every month to share new artwork. In this day and age here in Marin, where many people do not even know their neighbors, it is a breath of fresh air. A community link near one's own home makes one feel more whole and integrated in the local environment.



Acacia Bench by Tripp Carpenter

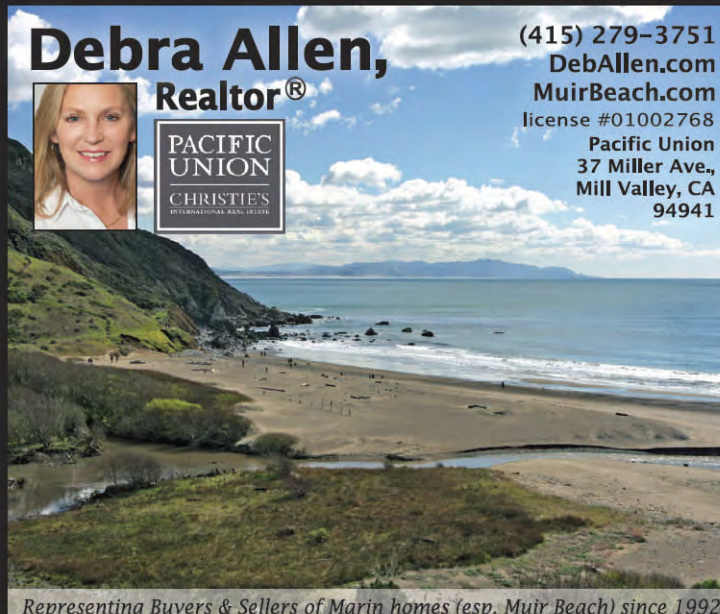


**Kathleen Delehanty**  
Quarterly Real Estate Update

Listing and selling properties on Mt. Tam. Contact me...let my 20+ years experience on the Mountain work for you. Call for a free evaluation of your property and feedback for preparing your home for the market.



Alain Pinel Realtors  
DRE#00897634  
415/755-8300  
kdelehanty@apr.com




**Debra Allen,**  
Realtor®

**PACIFIC UNION**  
CHRISTIE'S  
INTERNATIONAL REAL ESTATE

(415) 279-3751  
DebAllen.com  
MuirBeach.com  
license #01002768  
Pacific Union  
37 Miller Ave.,  
Mill Valley, CA  
94941

*Representing Buyers & Sellers of Marin homes (esp. Muir Beach) since 1992*




**METROPOLE**  
Mortgage Service

**KEITH PAPULIAS**  
Broker/Owner  
*"Lending Millions Since 1982"*

TEL: 415.383.0269 FAX: 415.383.4126  
90 THROCKMORTON AVE. SUITE 22 MILL VALLEY, CA 94941  
RESIDENTIAL CONSTRUCTION APARTMENTS COMMERCIAL

**Matthew Pouliot**  
Pacific Union GMAC  
Real Estate Mill Valley,  
CA Primary: 415-265-7020  
matthew.pouliot@pacunion.com  
Http://www.PouliotProperties.com

Jewelry, Gemstones,  
Consignments, Repairs,  
Appraisals, We Buy  
Gold & Jewelry



**Neal Silverman**

718 B Street  
San Rafael, CA 94901  
415-459-0333

**Benchmark Jewelry**

Tues – Fri: 11:30am – 5:00pm  
Saturday: 11:30am – 4:00pm  
Closed Sunday & Monday



Would you like to advertise in The Lookout?  
Contact Faybeth Diamond: fbdive@comcast.net

**FOO HAUL**  
Available for light hauling, moving and dump runs.  
3/4 ton PU truck

**2015 MWPCA BOARD OFFICERS**

President	Keith Papulias	383-0269
VP	Harold Dittmer	hdittmer@sbcglobal.net
Treasurer	Carol Stern	huckleberrycas@yahoo.com
Rec. Sec.	Nancy Gribler	nancy.gribler@yahoo.com
Corrresp. Secretary	Lynn Hindley	lynnhindley@sbcglobal.net 388-7252
Director	Lila Sparks-Daniels	lilasd@aol.com
Director	Faybeth Diamond	388-9255 fbdlive@comcast.net
Director	Peter Hindley	pdhindley44@gmail.com
Director	Susan Johnson	susancaj@comcast.net
Director	John Lovell	golfodulce@yahoo.com
Director	Judy Sparks Graham	jsgrlg@comcast.net

**COMMITTEES**

Clubhouse Rentals	Lynn Hindley
Safety/Emergency	Susan Johnson/Faybeth Diamond
Lookout Newsletter	Rhonda Dubin: 415-497-4069 rrdubin@gmail.com
Tech Consultant	Peter Spear: 383-1842
Webmaster	Diane Curtis: dianecurtis@mail.com
Parenting	John Lovell

**THANK YOU TO OUR LOOKOUT CONTRIBUTORS THIS ISSUE:**

Beverly Anderson, Jim Bramell, Tripp Carpenter, Diane Curtis, Kellen Dannamm, Faybeth Diamond, Roy Forest, Elly Graham, Nancy Gribler, Teresa Harrison, Susan Johnson, John Lovell, Mia Monroe, Carl Nolte, Woodward Payne, Linda Sawtelle, Kristin Shannon, Lila Sparks-Daniels, Bob Wright

Community Calendar			
www.mounttam.org			
JULY			
11, 12	Sat Sun	Green Waste Chipper Days	9AM-5:30 PM
18	Sat	Clubhouse BBQ 80 <sup>th</sup> Anniversary	Noon-5
29	Wed	Mt Tam Purls	3:00 PM
AUGUST			
1	Sat	Artists of Mount Tam Art Fest	11AM-6PM
26	Wed	Mt Tam Purls	3:00 PM
OCTOBER			
4	Sun	Jazz Fest	1:00 PM

**Clubhouse Available for Rent**

Rates, rules, forms, calendar and all information about what is included are on the website: <http://www.mounttam.org>

Special member discounts

**A Note From the Editor**

Have any comments for us? Do you have a story you would like to share or news about our neighborhood? Photos? We welcome your feedback and contributions.

Rhonda Dubin  
415-497-4069 / [rrdubin@gmail.com](mailto:rrdubin@gmail.com)