



UB-6022D-20

High Speed Drilling Machine



*All specifications are subject to change without prior notice
Verification of technical changes may be confirmed after receipt of order*

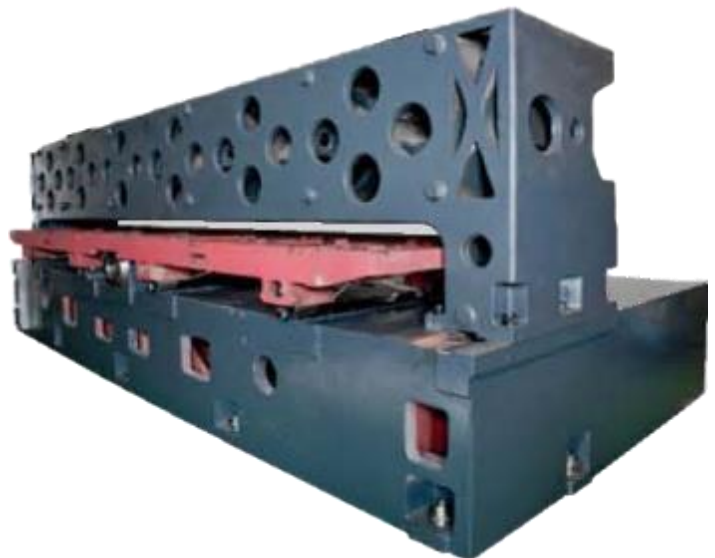


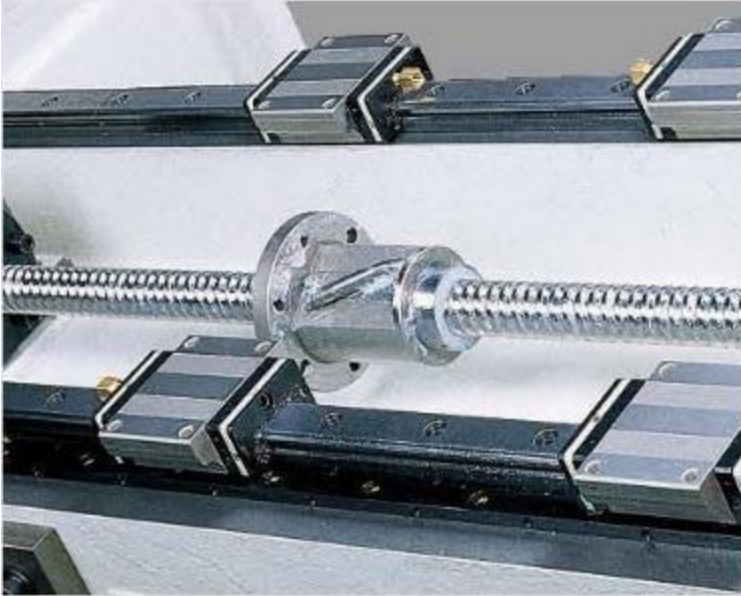
UB-6022D-20

The base and column of the UB-6022D is a One-Piece cast design, aged for 4 months to stabilize the casting before manufacturing.



This Box Type machine base and column are reinforced by inner ribs, which are precisely positioned to increase the damping effect of the machine and increase rigidity.

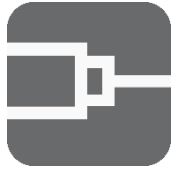




This machine features patented NSK pre-tensioned, silent, ball screws installed in order to meet ultra high-speed positioning requirements.

The six-head high torque, high speed spindles offers versatility in drilling hole sizes from 0.1mm-6.35mm. The Westwind variable speed spindle can range from 20,000-200,000 RPM and is designed to have low dynamic runout (DRO) across speed range.





Spindle Specifications



The six-head high torque, high speed spindles offers versatility in drilling hole sizes from 0.1mm-6.35mm. The Westwind variable speed spindle can range from 20,000-200,000 RPM and is designed to have low dynamic runout (DRO) across speed range.

1/8" Collet Size Tools

900 L/min Air Consumption – 28% less than other competitors

	Takisawa UB, PCB Machine	European and American drilling machine
Air flow demand value	900L/min	1250L/min
Actual horsepower demand value of air compressor	10HP	12.5HP
Power consumption value	15KVA	15KVA
Total Power Consumption	19KVA	23KVA

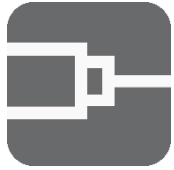
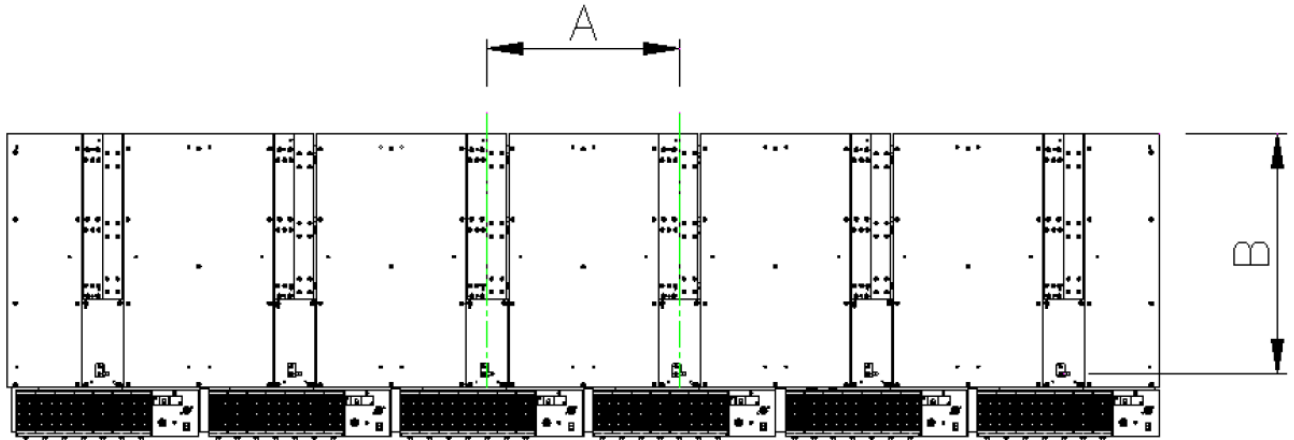


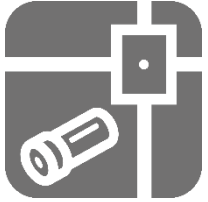
Table Layout



Model	No. of Spindle	Working Area		Tools per Station
		A	B	
UB-6022	6	545mm	690mm	350
UB-7018	7	470mm	690mm	300

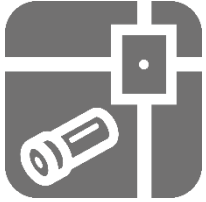
Machining Range (Inch)

Model	UB-6022D	UB-7018D
Area	21.5" x 27"	18.5" x 27"



350 Tool Magazine

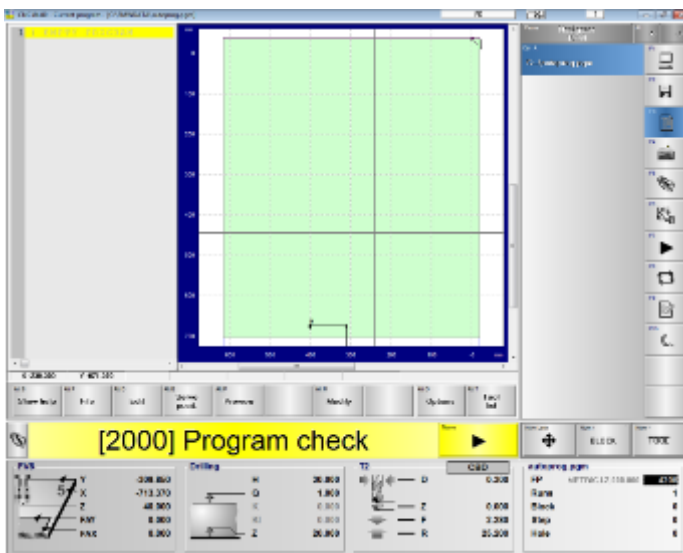




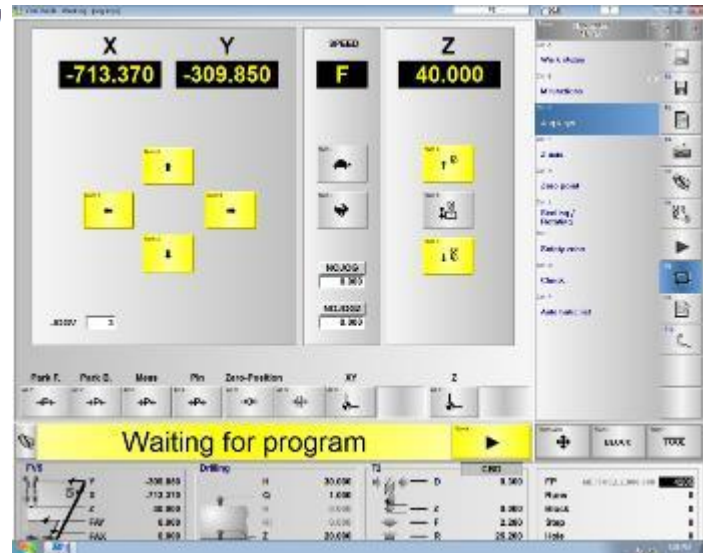
High Performance CNC Controller: IBM SIEB & MEYER

AUTO PAGE

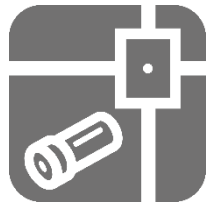
Machine status such as drilling condition, spindle speed and Federate can be monitored conveniently, the highest quality parts are produced under strict surveillance.



Drawing Function



Manual Operation Screen

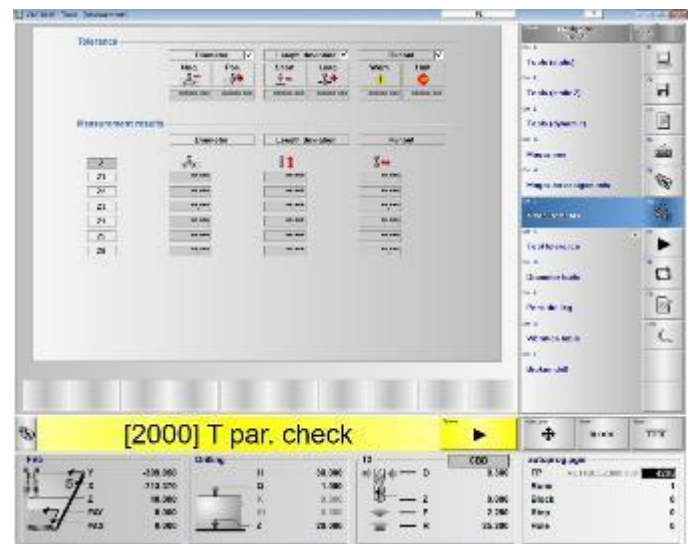
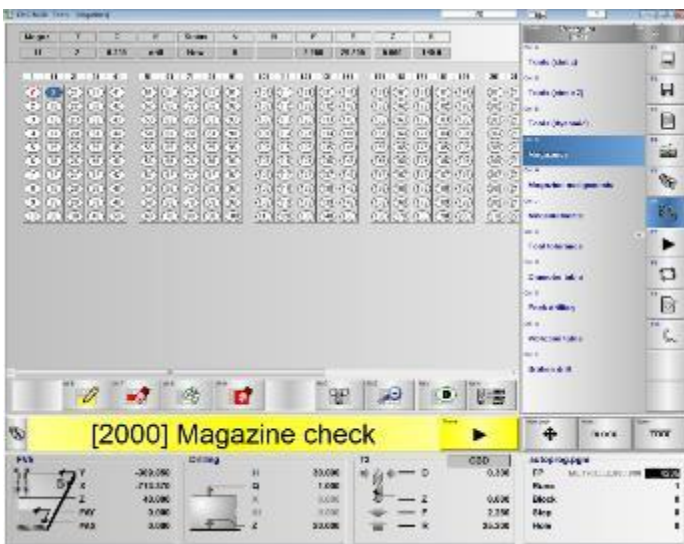
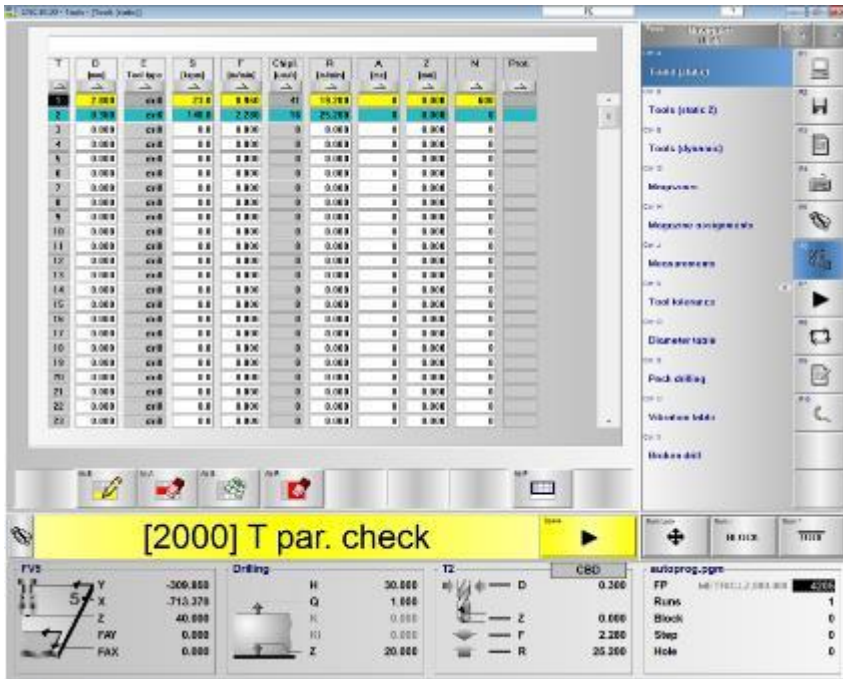


IBM SIEB & MEYER

[Tool Management Screens]

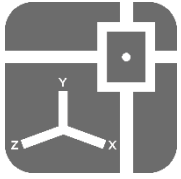
TOOL DATA STORAGE

The details of all tool data are stored in the system, the tool data settings can be tuned to unify cutting management. This operator friendly function minimizes human error and increases working efficiency.

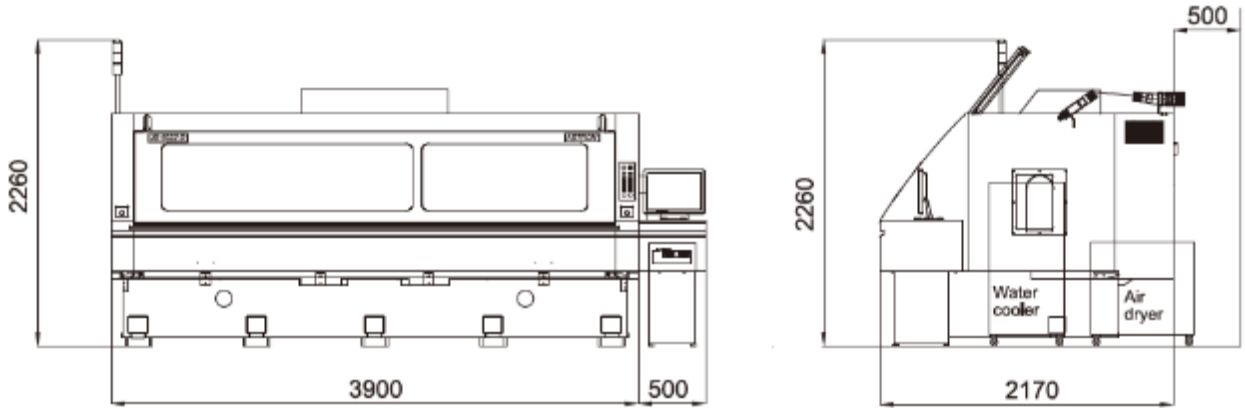


Tool Position Screen

Tool Measurement Function



Machine Dimensions



Model	UB-6022D	UB-7018D
Weight	8,600 kgs	8,800 kgs

Model	UB-6022D	UB-7018D
Dimensions	4400 (L) x 2170 (W) x 2260 (H) mm	

Designed and built by Takisawa Taiwan Technology Co., LTD in Taiwan, this CNC turning center is sold and serviced by JTEKT Toyoda Americas Corporation and our exclusive distribution partners.

Machine Specifications

Model	UB-6022D-16/20	UB-7018D-16/20
No. of spindles	6 sets	7 sets
Spindle distance	550 mm	475 mm
Max. working range	545 x 690 mm (21.5" x 27")	470 x 690 mm (18.5" x 27")
Spindle RPM	160,000 / 200,000 rpm	
X, Y-axis rapid positioning speed	50 m/min	
Z-axis rapid positioning speed	30 m/min	
Capacity of tool magazine	350 bits	300 bits
Machine dimensions	4400 (L) x 2170 (W) x 2260 (H) mm	
Machine weight	8,600 kg	8,800 kg

Common Specifications

Table size	730 x 3300 mm
X,Y-axis positioning system	X, Y-axis move independently, driven by full digital AC servo motor with linear scale
X,Y-axis min. setting unit	0.001 mm
X,Y-axis positioning accuracy	±0.005 mm Full stroke
Z-axis system	The vertical movement of each Z axis (spindle) are driven respectively and independently by its own motor
Z-axis min. setting unit	0.001 mm
Z-axis feeding speed	1~9999 mm.min
Spindle type	High frequency air bearing spindle
Spindle collet	1/8"
Drilling accuracy	Within ±0.02 mm (ASTRON condition)
Air clamping	Stack-PIN

Designed and built by Takisawa Taiwan Technology Co., LTD in Taiwan, this CNC turning center is sold and serviced by JTEKT Toyoda Americas Corporation and our exclusive distribution partners.

Enviromental conditions	Ambient temperature 0-45C, working temperature: 20-26C humidity (Relative): less than 75% vibration, Less than 0.5G
Hard disk capacity	≥ 80GB
CPU specification	2 GHz
USB Interface	4 sets

Additional Standard Features

- Tool On/Off monitoring device
- Optical tool length measurement
- Automatic PIN reverse and anti-crash protection function
- On-line operating system (IBM SIEB & MEYER)
- CNC controller: SIEB & MEYER-CNC84.00
- Memory capacity 512 MB

Operation Requirements

Total power consumption	AC220V, 50/60Hz, 20KVA
Air consumption	900 liter/min
Compressed air requirements	7~8 kg/cm ²
Vacuum pressure for chip collection	1,900 mm-H ₂ O
Static air pressure for chip collection	4 CMM

Standard Accessories

- Machine Standard Spec with 6 Spindles
- SIEB&MEYER CNC Controller
- Soundproof & dustproof cover
- 3 colors Station Lamp
- Spindle Cooling System
- NC Operation Manual
- Spindle Air Dryer
- Tool Box
- Z-axis Reference Position Fixture
- ATC Chuck
- Extra Drill Bits Storage Box (For Backup)
- Extra Spindle (200K) Head – Spare Parts
- Spindle Collet Chuck Cleaner
- Manual Grease Gun
- CBD Type Pressure Pressing Bushing
- Tiny Hole Bushing
- Voltage Regulator (KVAV)
- Collet B Collision Avoidance Function
- Water Chiller
- R Type Pressure Pressing Foot
- “ESC” Stop, and Detecting Function