

HIGH SPEED
EAGLE V550

Perfect mastery
of surfaces



ENTRY INTO PRECISION MILLING

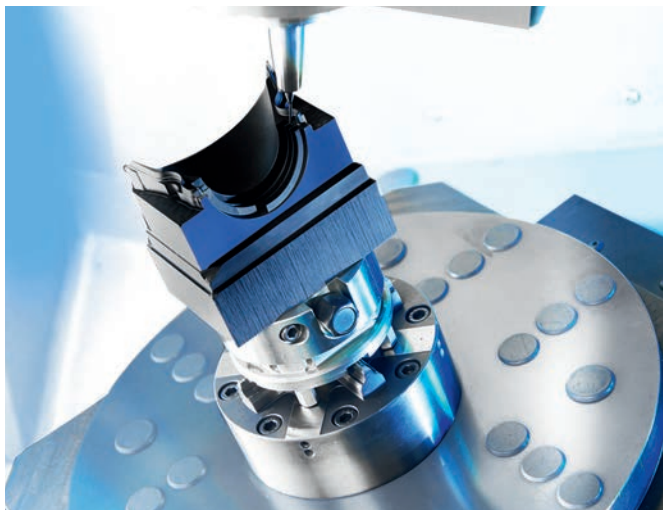
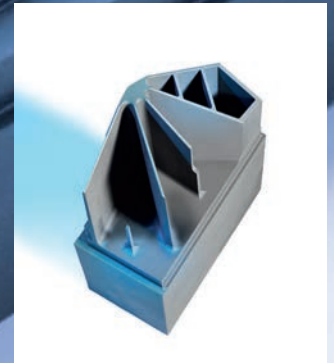
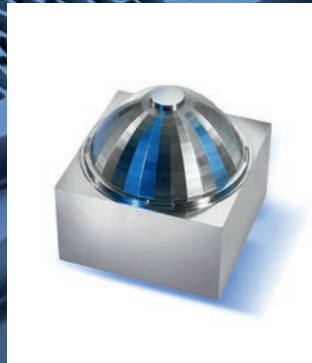
Highly dynamic and flexible to use

OPS  **INGERSOLL**
Fly with the eagle!

Entry into precision machining

As an entry-level model in the field of high-speed milling, the HIGH SPEED *EAGLE* V550 not only impresses with its small footprint, but is also equivalent to our other machines of the V-Line series in terms of quality and efficiency.

Like all of our machines, the HIGH SPEED *EAGLE* V550 is ideally positioned for machining copper and soft and hard machining of steel in addition to graphite machining.



**HIGH SPEED
EAGLE V550**

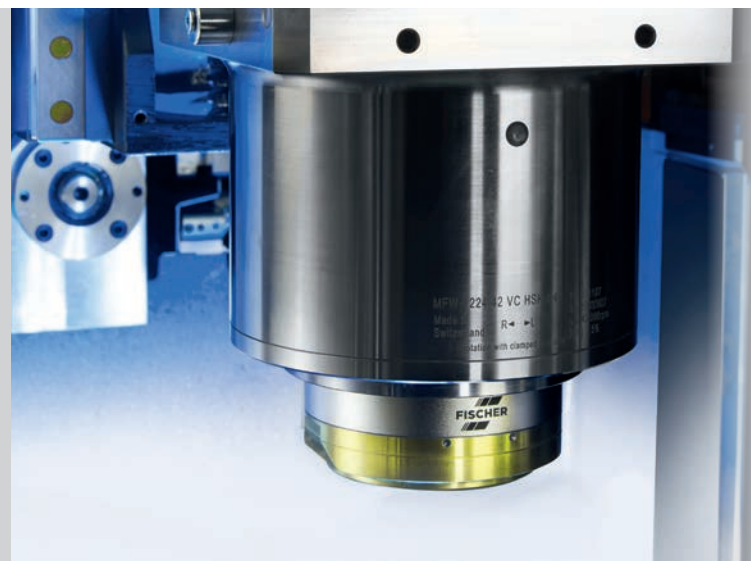
3-/5-axis machining

As a 3- or 5-axis machining center, the HIGH SPEED *EAGLE* V550 is equally suitable for the machining of complex electrode-geometries as well as for the production of precise mechanical parts in machine- and automotive-engineering and for the machining of inserts in tool and mould construction.

The highly dynamic HIGH SPEED *EAGLE* V550 is the entry-level model for complex 5-axis technology and is ideally suited for machining a wide range of materials.

Precision strategies

Various options for cooling, geometry and temperature error correction for machine and cutting spindle, as well as a fully automatic working ATC (Automatic temperature-drift-control), assure the highest machining precision over the entire range of travel.





HEIDENHAIN TNC 640

Control unit of the latest generation with 19" touch-screen

With strategies especially optimised for HSC machining, top results are achieved even with workpieces having different sizes. The specific concept of the V-Line in combination with the new features of the control unit, enables outstanding surfaces and precision with simultaneous optimisation of the machining time.



Flexible automation solutions

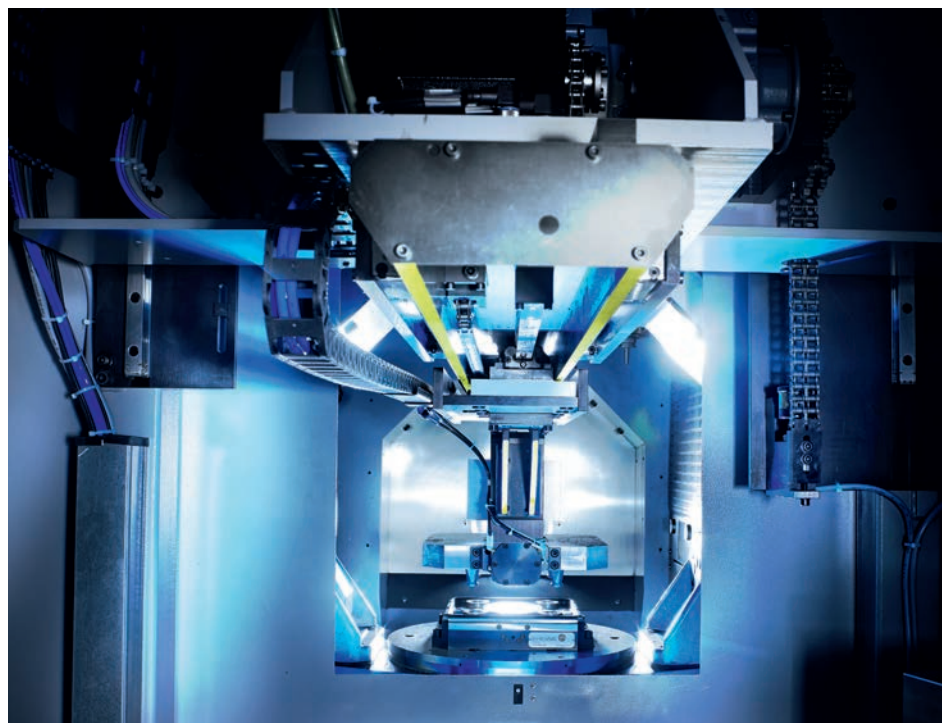
Like all of our machines, the HIGH SPEED *EAGLE*V550 is also prepared for automation. Retrofitting is also possible, easily and quickly at any time.

The possibility of loading with tools and workpieces from two sides offers ideal conditions for compact automation solutions without limiting the operator's accessibility to the work space. Pallets of up to 400 x 400 mm can be loaded automatically.

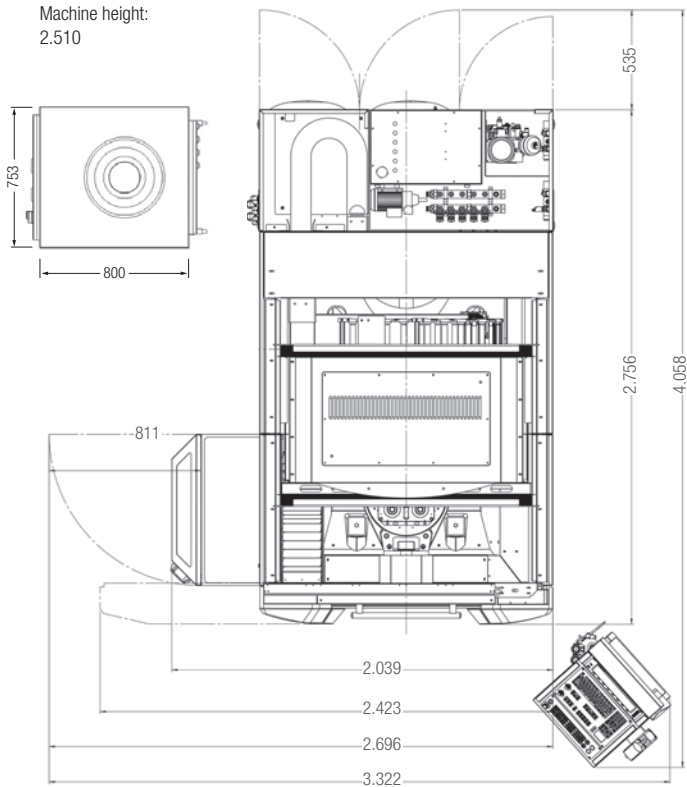
MultiChange easy

Pallet changer for automatic loading of pallets or electrodes

- Loading by control with m-codes
- Retrofit of an existing machine is possible at any time
- 40 positions for electrodes or
- 5 positions for pallets (320 x 320 mm) or
- 4 positions for pallets (398 x 398 mm)

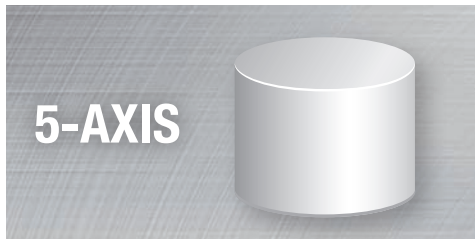


HIGH SPEED EAGLE V550



All dimensions specified in mm

Workpiece dimensions



Ø 400 mm / H = 380 mm
max. 250 kg

Setup – Technical data

Travel distances	X = 550 mm; Y = 400 mm; Z = 400 mm
Travel speed	max. 30 m / min
Acceleration	max. 15 m / s ²
Spindle nose to table distance min / max	2.0" / 17.7" mm 50 / 450 mm
Workpiece size 5-axis	Ø 15.7" ; H = 15.0" (max. 550 lb) Ø 400 mm ; H380 mm (max. 250 kg)
Connected load	32 kVA
High-frequency spindle	HSK E40: 1 - 42.000 rpm
Spindle power	20 hp / 15 kW
Tool changer selection	32 positions (HSK E40) Optional: MultiTool 100/150
Minimum lubrication	included
CNC control unit	HEIDENHAIN TNC 640 with 19" touchscreen
Dimensions	W 80.3" x D 108.5" x H 98.8" W 2,039 x D 2,756 x H 2,510 mm
Total weight	18,740 lb / 8500 kg
5-Axis Rotary Table	HSC round swivel table: Geared B-axis -120 degrees / +60 degrees Geared C-axis 20 rpm Workpiece weight: 550 lb / 250 kg
Further options	BLUM LC50-DIGILOG Laser system for tool measurement Infrared measuring probe, 3D-measuring Graphite exhaust system, Oil mist suction unit ATS Aerosol dry lubrication MHT medium distributor Email messenger Ready-for-automation, EcoTec Software options HEIDENHAIN

We reserve the right to make technical changes.

OPS  **INGERSOLL**
Fly with the eagle!

MC MACHINERY
SYSTEMS, INC.
a subsidiary of Mitsubishi Corporation