



Insurance Companies



Optometrists



Pharmacies



Dentists

Covered Entities

A covered entity can be health care providers, health plans, and health care clearinghouses involved in the transmission of protected health information (PHI).



Doctors Offices

Do I Need to be HIPAA Compliant?

Anyone who handles PHI needs to be HIPAA compliant including but not limited to...



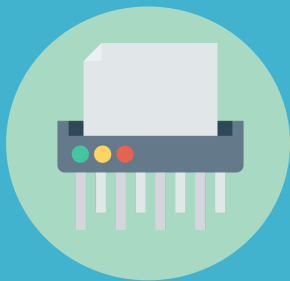
MSPs

Business Associates

A business associate is any individual or entity that may encounter PHI through business dealings with covered entities.



Billing Companies



Shredding Companies



Lawyers



Answering Services