

**Casey Concrete Ltd.**

**HARDSCAPE CATALOGUE**



[caseyltd.ca](http://caseyltd.ca)



# Casey Concrete Ltd.

caseyltd.ca

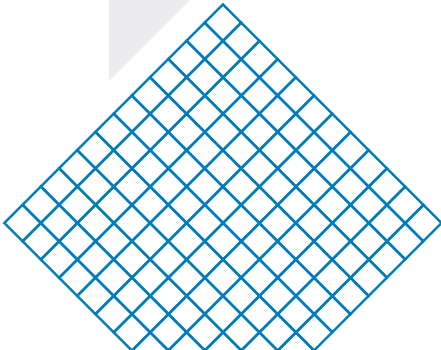
## Who we are

**Casey Concrete Ltd.** has produced quality Ready-Mix concrete and concrete products since the 1950's in Atlantic Canada. Family owned and operated throughout its history, Casey Concrete has grown through customer service and technical expertise in all areas of concrete technology.

Casey Concrete has developed a line of concrete hardscape products that meet the demands of Atlantic Canada.

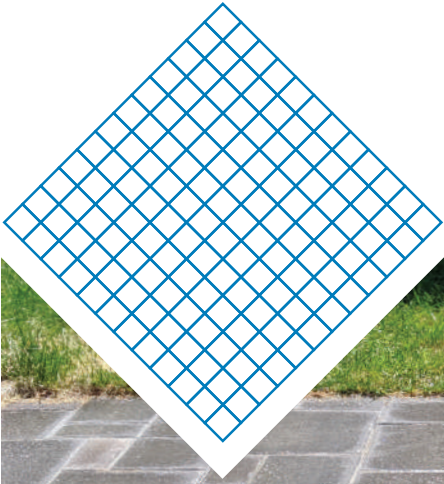
Produced in Amherst, Nova Scotia in the most modern concrete products plant in Atlantic Canada, Casey Blocks are built to last.

We stand behind our products and take pride in our customer service.





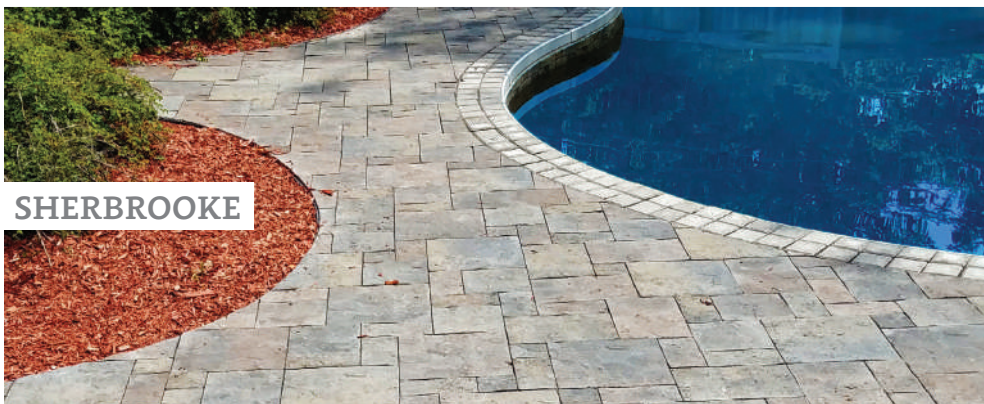
# PAVERS



ALPINE



COASTAL



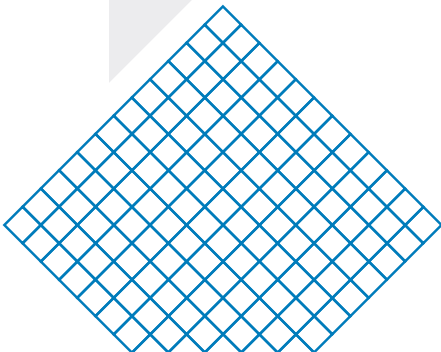


# PAVERS



## **ALPINE**

Our Alpine line has a smooth surface and slightly bevelled edge. They are available in six colours and when combined with different patterns and borders, the combinations are endless. They nicely complement our other product lines including our retaining walls.



**ALPINE**

4 Lx4 W (in)  
100x100 mm



Earthblend

**ALPINE**

8 Lx4 W (in)  
200x100 mm



Charcoal

**ALPINE**

8 Lx8 W (in)  
200x200 mm



Natural Grey

**ALPINE**

12 Lx8 W (in)  
300x200 mm



Sand-Charcoal

**ALPINE**

12 Lx12 W (in)  
300x300 mm



Granite



Casey-Mix

*Available in 60 mm & 80 mm thickness*

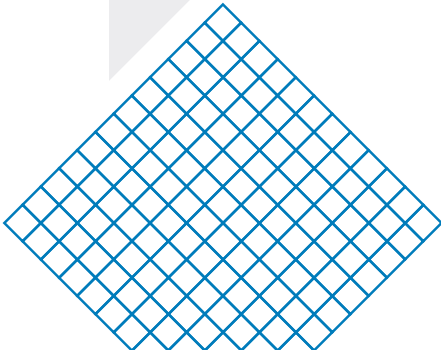


# PAVERS



## COASTAL

Our Coastal line has a rich stone textured surface that resembles hand-cut natural material that can lend softness and elegance to your landscape project. They are available in six colours and when combined with different patterns and borders, the combinations are endless. They nicely complement our other product lines including our retaining walls.





**COASTAL**  
4 Lx4 W (in)  
100x100 mm



Earthblend

**COASTAL**  
8 Lx4 W (in)  
200x100 mm



Charcoal

**COASTAL**  
8 Lx8 W (in)  
200x200 mm



Natural Grey

**COASTAL**  
12 Lx8 W (in)  
300x200 mm



Sand-Charcoal

**COASTAL**  
12 Lx12 W (in)  
300x300 mm



Granite



Casey-Mix

*Available in 60 mm & 80 mm thickness*

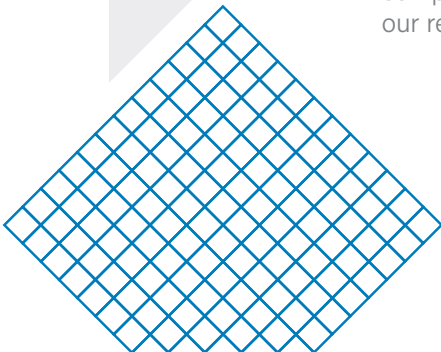


# PAVERS



## AVALON

Our Avalon line has a smooth surface and slightly bevelled edge. Having a larger footprint than our Alpine line makes them faster to install and will give your project a different finished appearance. They are available in six colours and when combined with different patterns and borders, the combinations are endless. They nicely complement our other product lines including our retaining walls.



**AVALON**  
12 L x 6 W (in)  
300 x 150 mm



Earthblend

**AVALON**  
12 L x 12 W (in)  
300 x 300 mm



Charcoal

**AVALON**  
18 L x 12 W (in)  
450 x 300 mm



Natural Grey



Sand-Charcoal



Granite



Casey-Mix

*Available in 60 mm & 80 mm thickness*

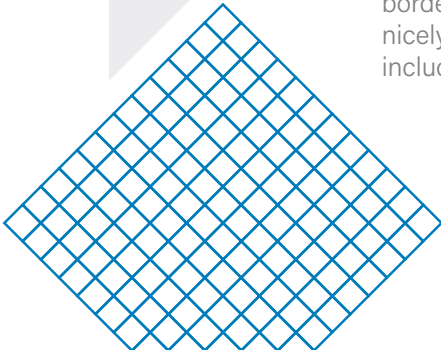


# PAVERS



## SHERBROOKE

Our Sherbrooke line has a rich stone textured surface that resembles hand-cut natural material that can lend softness and elegance to your landscape project. Having a larger footprint than our Coastal line makes them faster to install and will give your project a different finished appearance. They are available in six colours and when combined with different patterns and borders, the combinations are endless. They nicely complement our other product lines including our retaining walls.



**SHERBROOKE**

12 L x 6 W (in)  
300 x 150 mm



Earthblend

**SHERBROOKE**

12 L x 12 W (in)  
300 x 300 mm



Charcoal

**SHERBROOKE**

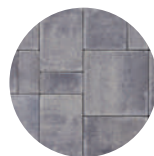
18 L x 12 W (in)  
450 x 300 mm



Natural Grey



Sand-Charcoal



Granite



Casey-Mix

*Available in 60 mm & 80 mm thickness*



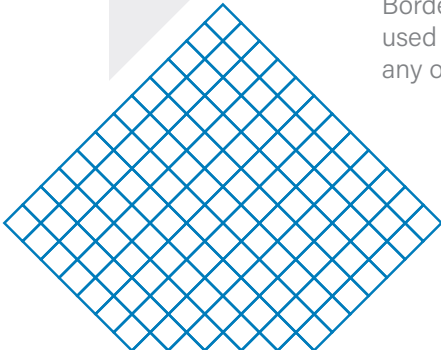
# PAVERS



## **BORDERS**

Border stones can be used as accents or to create a border around your walkway or patio. Contrasting or complementary colours can be incorporated into any project. Border stones are sold in their individual sizes (not as part of multi-piece sets) and can be used as a stand-alone product.

Border stones are sold by the layer and can be used entirely on their own or in combination with any of our paver products, not just for borders.



**BORDER STONE**

**8 L x 4 W (in)**

200 x 100 mm

*Available only in  
60 mm smooth*



**Earthblend**

**BORDER STONE**

**8 L x 8 W (in)**

200 x 200 mm

*Available only in  
60 mm smooth*



**Charcoal**

**BORDER STONE**

**12 L x 8 W (in)**

300 x 200 mm

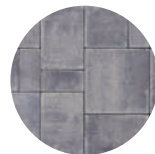
*Available in 60 mm  
and 80 mm smooth  
and textured*



**Natural Grey**



**Sand-Charcoal**



**Granite**



**Casey-Mix**



# EC-STONE

## EC-STONE

Our EC-Stone line has been around for many years. It comes with three options for a surface finish; **brick**, **smooth** and **slate** top. It is a proven attractive landscape pad at an affordable price. EC-Stones come in our main six colours and complement all our other landscape products.





**EC-STONE BRICK**

18 L x 18 W x 2 H (in)

445 x 445 x 50 mm



Stone Red



Casey-Mix



Charcoal



Natural Grey

**EC-STONE SMOOTH**

18 L x 18 W x 2 H (in)

445 x 445 x 50 mm



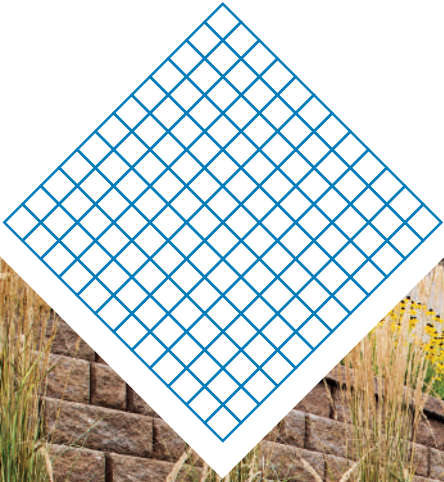
**EC-STONE SLATE**

18 L x 18 W x 2 H (in)

445 x 445 x 50 mm



# WALLS & STEPS



**HIGHLAND WALL**



**CAPS AND STEPS**



**GARDEN WALL**



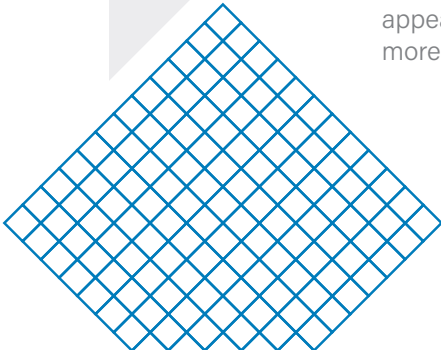


## WALLS & STEPS



### **HIGHLAND WALL**

The multiple sizes of the Highland Stone® retaining wall system evokes the charming, hand-stacked walls of centuries past. The unique 6" system offers a hand-hewn face that portrays a stone-like appearance. The patented rear lip allows for faster, more reliable construction.



**6" RETAINING BLOCK**  
6 Lx12 Wx6 H (in)  
150x305x152 mm



Earthblend

**12" RETAINING BLOCK**  
12 Lx12 Wx6 H (in)  
302x305x152 mm



Casey-Mix

**18" RETAINING BLOCK**  
18 Lx12 Wx6 H (in)  
451x305x152 mm

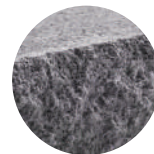


Natural Grey

**CORNER BLOCK**  
16 Lx8 Wx6 H (in)  
406x203x152 mm



Sand-Charcoal



Charcoal



Granite



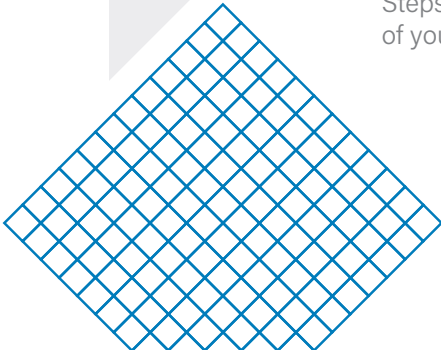
# WALLS & STEPS



## CAPS AND STEPS

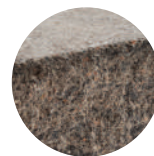
Caps give a finished appearance to our Highland retaining wall system. Available in both long and short styles to give flexibility in design and function.

Steps can be used to incorporate a staircase into a retaining wall or to build a stand-alone stairway. Steps create accessibility to patios and other areas of your property.



**SHORT CAP**

7-8 Lx13 Wx3 H (in)  
174-210 x 330 x 76 mm



Earthblend

**LONG CAP**

18-12 Lx14.5 Wx3 H (in)  
457-305 x 368 x 76 mm



Casey-Mix

**STEP BLOCK**

16 Lx16 Wx6 H (in)  
406 x 406 x 152 mm



Natural Grey

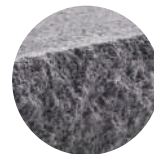
**PRECAST STEP**

16 Lx48 Wx6 H (in)  
1219 x 406 x 152 mm

*Wet cast product,  
natural colour range*



Sand-Charcoal



Charcoal



Granite

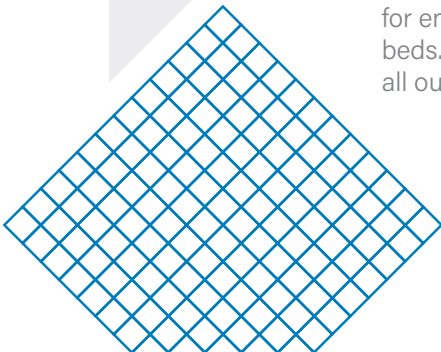


# WALLS & STEPS



## GARDEN WALL

Garden Wall stones have a nice split-texture on both front and back for versatility and easy to construct curves and circles. The stones are ideal for enriching the look of your garden or flower-beds. They come in six colours and complement all our other landscape products.





**TOP BLOCK**

(Front)

**8 Lx7Wx4 H (in)**

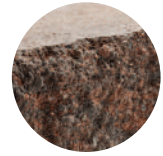
200x178x100 mm



Earthblend

**TOP BLOCK**

(Reverse Side)



Casey-Mix

**MIDDLE BLOCK**

(Front)

**8 Lx7Wx4 H (in)**

200x178x100 mm



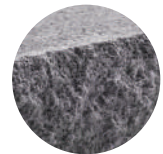
Natural Grey

**MIDDLE BLOCK**

(Reverse Side)



Sand-Charcoal



Charcoal



Granite

# HARDSCAPE PRODUCT DISCLAIMER

## COLOUR

Concrete products are composed of natural raw materials and therefore slight colour variances should be expected. For our products that are coloured with pigment during production, the recipes are designed with natural raw materials such as the sand and stone, allowing the products to vary slightly in colour tone, veining and texture from one unit to the next. Therefore, colour samples are approximate representations of our standard colours and actual product colours may vary. Final colour selection should be made at your local dealer from stocked product.

Casey Concrete recommends immediate verification of product condition and colour upon receipt. If there are any discrepancies, contact your dealer before continuing with the project. Installation of the product constitutes acceptance of the product.

## COLOUR DISTRIBUTION AND LAYING METHOD

Proper installation enhances the overall colour of a project. Where possible, product should be randomly selected from at least two pallets when installing. This creates an attractive and subtle blending of colour.

## EFFLORESCENCE

Efflorescence is a naturally occurring process in all concrete products and may appear on the product surface as a white powdery substance. Efflorescence is more noticeable on darker products due to the contrast with white. Efflorescence does not, in any way, compromise the functionality, structural integrity or long-term durability of the product. We take every measure in our production process to reduce efflorescence but eliminating all efflorescence from ever occurring is not possible. However, it will wear or wash off over time or can be removed with an efflorescence removal product. Casey Concrete Ltd. accepts no responsibility or liability for this naturally occurring condition to which all concrete products are susceptible.

## PLEASE NOTE

Concrete and concrete products are manufactured from raw materials and therefore variation in colour and texture can occur.

## PRODUCT DIMENSIONS

Metric dimensions indicated are accurate to the nearest 1mm. Imperial units are rounded to the measurements they are most often known as.

# CONCRETE MASONRY AND HARDSCAPE PRODUCT WARRANTY

## DEFINITION OF WARRANTY

Casey Concrete hereby guarantees that, on the date of delivery, its concrete products meet or exceed the current applicable standards set by the CSA (Canadian Standards Association).

Under the strict condition that the provisions stated hereinafter are complied with, Casey Concrete Ltd. guarantees the structural integrity of its concrete landscaping and masonry products, for a minimum period of fifty (50) years from the date of purchase of the product. The warranty applies to normal, non-abusive use of the product. It covers any abnormal deterioration of surfaces that may be caused by typical use of sodium chloride for de-icing pavers, slabs or steps.

## WARRANTY EXCLUSION

The warranty does not apply to spalling or other breakages caused by impacts, abrasions or over stressing. The warranty does not apply when deterioration results from design or installations not complying with applicable codes, standards and recognized best work practices and procedures.

The warranty does not apply to any impacts by any mechanical snow removal equipment.

This warranty does not apply to any damage resulting from an "Act of God" or damage that results from a deliberate act or negligence on the part of the customer, owner, installer or third party.

## IMPLEMENTATION OF WARRANTY

In the event of a claim, the Customer must present a valid proof of purchase, namely the invoice and delivery slip(s). Casey Concrete will supply, free of charge, a new product in replacement of the defective one if necessary, following inspection of the product by Casey Concrete or one of its representatives or agents. Installation expenses remain the responsibility of the Customer.

## TRANSFERABILITY

The warranty is transferable to the current owner or to any subsequent owner of the building or the job, on the condition that it is accompanied by a valid proof of purchase and certificate of warranty.



# Casey Concrete Ltd.

## **Amherst NS**

T: 902 667 3395

## **Bouctouche NB**

T: 902 743 6472

## **Trenton NS**

T: 902 755 5550

## **Antigonish NS**

T: 902 863 7070

## **East Hants NS**

T: 902 758 2775

## **Truro NS**

T: 902 895 1618

## **Bedford NS**

T: 902 835 9199

## **Moncton NB**

T: 506 867 0888

## **Wallace NS**

T: 902 257 2010

[caseyltd.ca](http://caseyltd.ca)

For more info

