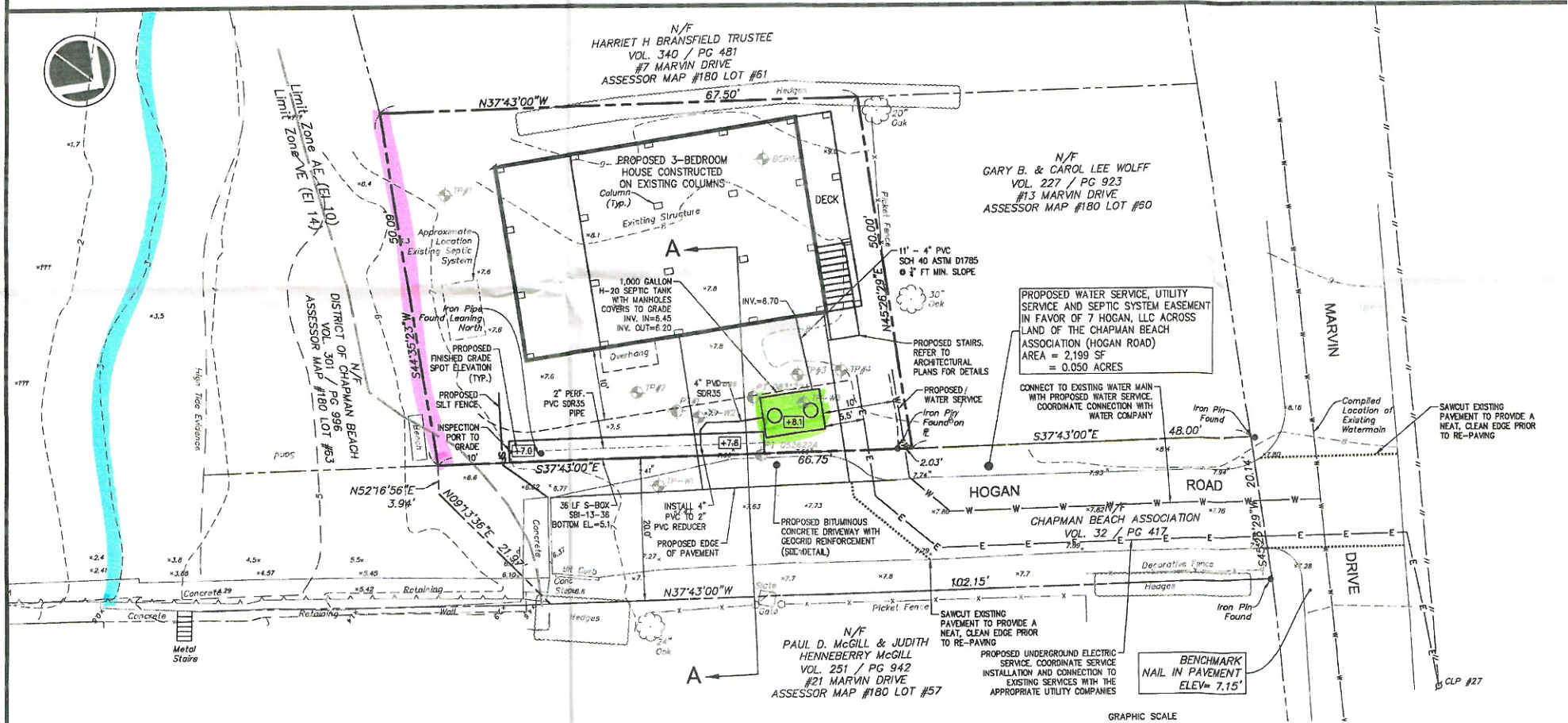


Year-round

Roots: at 52"

Length: 1.6
Roots: N/O
Restrictive: 72" Ledge

MLSS = 36" (Provided)



Seasonal

H-20 LOADING
NTS

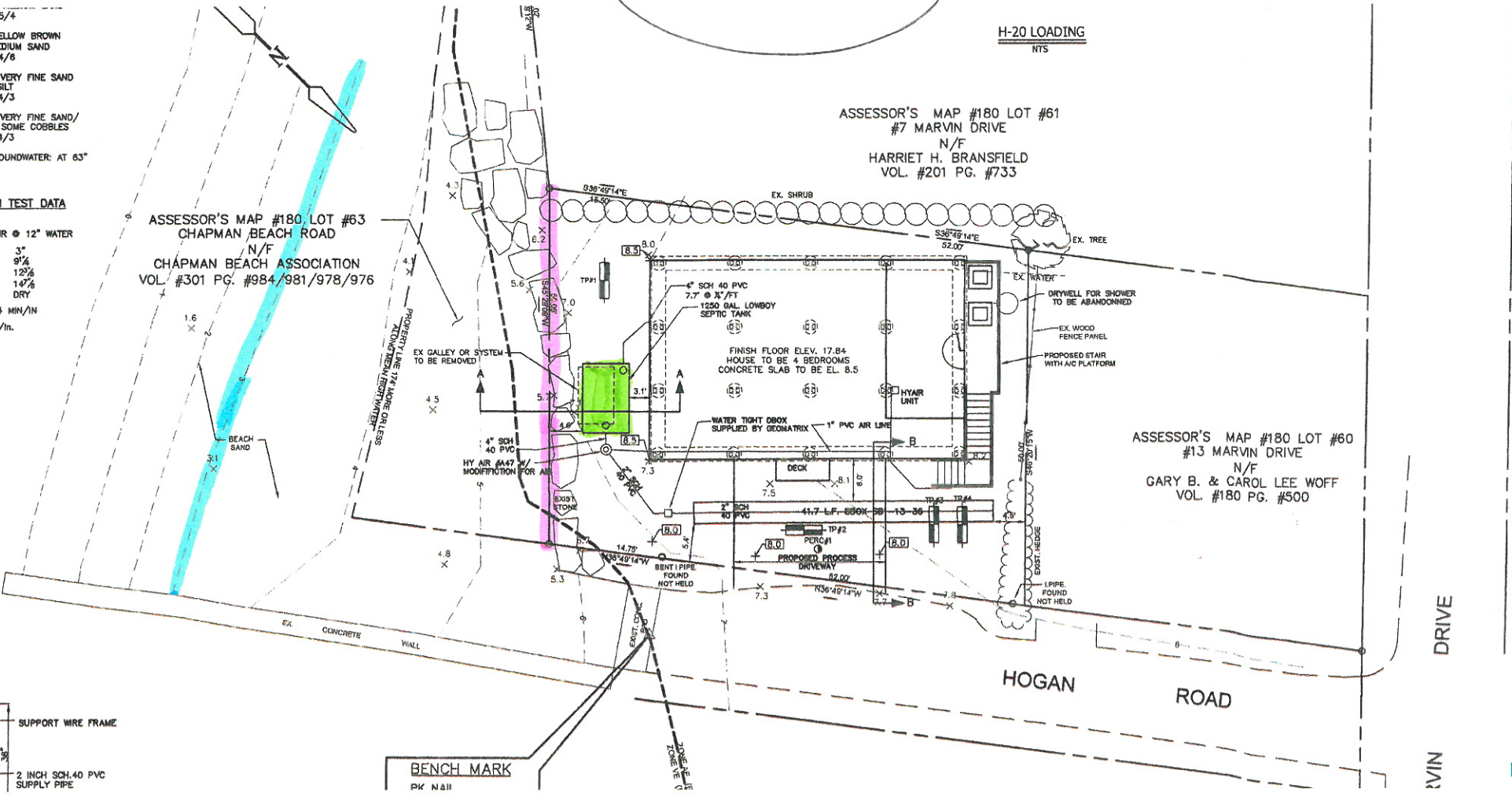
5/4
YELLOW BROWN
MEDIUM SAND
4/6
N VERY FINE SAND/
SILT
4/3
N VERY FINE SAND/
L SOME COBBLES
4/3
GROUNDWATER: AT 63"

IN TEST DATA
14
HR @ 12" WATER
3"
9 1/4"
12 1/2"
14 1/2"
DRY
4 MIN/IN
n./m.

ASSESSOR'S MAP #180 LOT #63
CHAPMAN BEACH ROAD
N/F
CHAPMAN BEACH ASSOCIATION
VOL. #301 PG. #984/981/978/976

ASSESSOR'S MAP #180 LOT #61
#7 MARVIN DRIVE
N/F
HARRIET H. BRANSFIELD
VOL. #201 PG. #733

ASSESSOR'S MAP #180 LOT #60
#13 MARVIN DRIVE
N/F
GARY B. & CAROL LEE WOFF
VOL. #180 PG. #500



SUPPORT WIRE FRAME
2 INCH SCH.40 PVC
SUPPLY PIPE

BENCH MARK
PK N&H

DRIVE
MARVIN

RECEIVE