

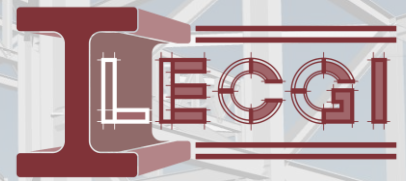
Services

Structural Detailing & Drafting

- Structural and miscellaneous steel detailing
- Erection drawings and shop fabrication drawings
- Connection Design – can provide calculations and stamps
- Create 3D models of all projects for greater accuracy
- Convert hand drawn sketches into AutoCAD drawings

Structural Design

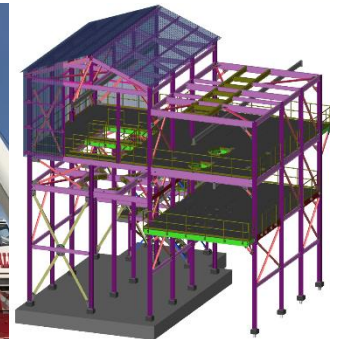
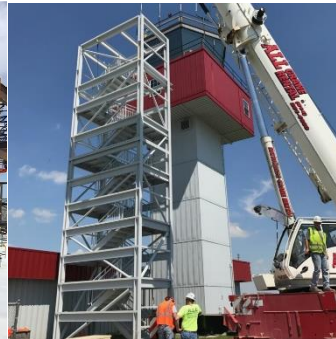
- Licensed professional engineers in the states of Alabama, Arkansas, California, Florida, Georgia, Indiana, Kansas, Kentucky, Louisiana, Maryland, Massachusetts, Michigan, Missouri, Nebraska, New Jersey, New Mexico, New York, Ohio, Oklahoma, Pennsylvania, South Carolina, Tennessee, Texas, and Vermont.
- Licensed structural engineers in Illinois, Kentucky, Nevada, and Utah.
- Over twenty years' experience in commercial and industrial design, including office buildings, detention centers, convention centers, refineries, chemical plants, and food and beverage plants.
- BIM (Building Information Modeling)



LECGI, Inc. is an engineering firm specializing in structural design and steel detailing. We have accomplished over 950 detailing projects throughout our history, along with as many engineering projects.

We use state-of-the-art computer technology and a group of talented employees with more than 20 years of experience in structural design, steel fabrication, erection, and project management.

Our goal is to provide quality service to our customers while staying on schedule.



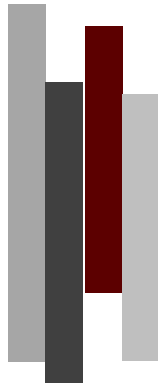
NAICS CODES:

541330 Engineering Services

541340 Drafting Services

CAGE CODE: 56EX2

DUNS #: 609126920



CERTIFICATIONS:

Certified Minority-owned Business Enterprise (MBE) by the Commonwealth of Kentucky

Certified Disadvantaged Business Enterprise (DBE) by Kentucky Transportation Cabinet

PROJECT NAME/LOCATION	DESCRIPTION	WEIGHT
CU Heilman Welcome Center Campbellsville, Kentucky	<ul style="list-style-type: none"> • Provided erection and fabrication drawings for structural and miscellaneous steel • Provided connection design with P.E. stamped calcs and drawings 	103 tons
Kentucky Center for the Arts Louisville, Kentucky	<ul style="list-style-type: none"> • Provided erection and fabrication drawings for structural and miscellaneous steel 	124 tons
Duke Energy CHP Clemson, South Carolina	<ul style="list-style-type: none"> • Provided erection and fabrication drawings for structural and miscellaneous steel, including platforms, ladders, handrails, and stair framing 	353 tons
Tronox Project Hamilton, Mississippi	<ul style="list-style-type: none"> • Provided erection and fabrication drawings for structural and miscellaneous steel in six sequences • Provided connection design with P.E. stamped calcs and drawings 	131 tons
Domtar Boiler Building Hawesville, Kentucky	<ul style="list-style-type: none"> • Provided erection and fabrication drawings for structural and miscellaneous steel, including ladder, grating, platform, and guardrails • Provided connection design with P.E. stamped calcs 	50 tons
Linden Sludge East Building New Jersey	<ul style="list-style-type: none"> • Provided erection and fabrication drawings for structural and miscellaneous steel • Provided connection design with P.E. stamped calcs and drawings 	75 tons
IU Excellence Academy Bloomington, Indiana	<ul style="list-style-type: none"> • Provided erection and fabrication drawings for structural and miscellaneous steel • Provided connection design and P.E. stamped calcs and drawings 	2206 tons
Slugger Field Renovations Louisville, Kentucky	<ul style="list-style-type: none"> • Provided erection and fabrication drawings for structural and miscellaneous steel • Provided connection design with P.E. stamped calcs and drawings 	47 tons
Ampacet Mezzanine Louisville, Kentucky	<ul style="list-style-type: none"> • Provided design of steel beams for mezzanine • Provided design drawings for footing and structural steel • Provided structural analysis and design reinforcement • Provided erection and fabrication drawings 	50 tons
HRSB Platform Texas	<ul style="list-style-type: none"> • Provided engineering design for all platforms, including those on bypass stack • Provide BIM for interference check • Provide design drawings for all platforms • Provided erection and fabrication drawings for all platforms 	75 tons