

Mix Wagon

The solution to precise well drilling

MN-400



Direct injection Smart Unit

Post Job Reports

Maintain constant circulating pressure.

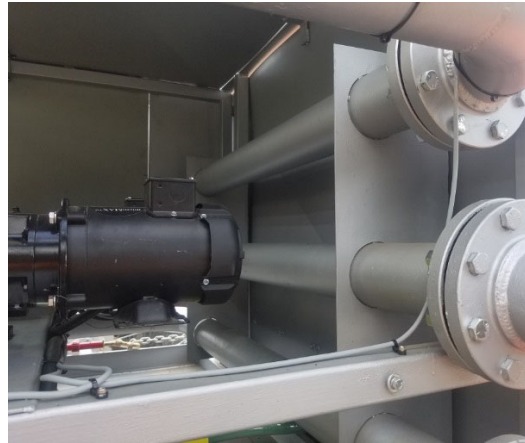
Automated Boost Pump Controls

Chemical concentrations adjust to the changing water rates via computer controls

View live anywhere (Real Time)
Admin panel allows you to securely share well data with your customer



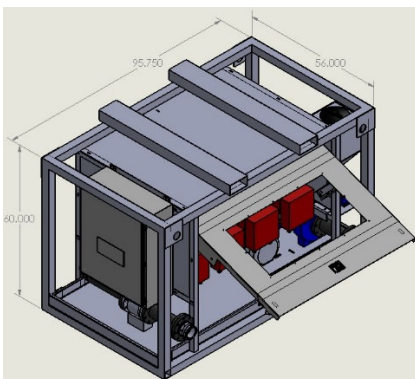
Direct injection



Hydrostatic mixer



Venturi Hopper / Boost pressure control



Compact size fits on any trailer
96" x 60" x 56" / Weight 1800lbs



Large weatherproof door secures and protect inside equipment.



Control from Cell Phone or Laptop

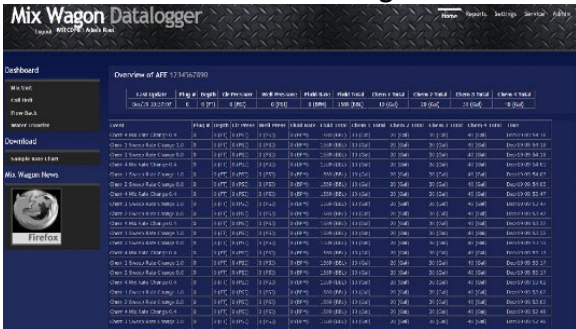
5695 Jack Creek Rd | Booneville, AR 72927 | O.(479) 675-0079 | F.(844) Mix-Chem
24hour support (479) 883-9496

Mix Wagon

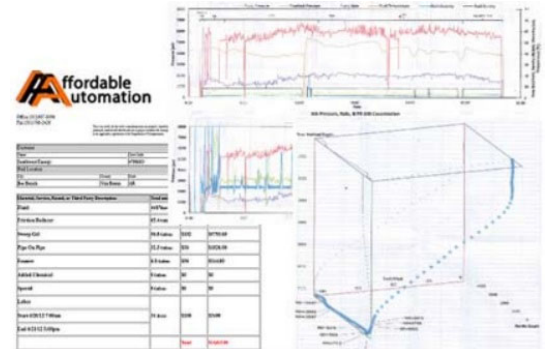
The solution to precise well drilling



Secure website login



Comprehensive "Post Job Report"



- Live jobs (Real Time)
- Job history and custom reports
- Instant message to operator
- Manuals and documents
- Maintenance schedule and unit history
- Email Reports

- Circulating and wellhead pressure
- Fluid flow rate and totals
- Chemical rates and totals
- Plug totals, volume, tag, and drill time.
- Sweep volume, viscosity, and plug

Smart Unit (MN-400)

Mix Wagon Features

- Heavy Duty welded steel construction
- High flow 4" flow meter (up to 20 BBL)
- Chemical concentration 0.05 to 5.0 gallon/10 BBL
- Clearly labeled hose operation
- Easy clean containment and cable tray
- 4 Chemical pumps mounted for easy service

Control Features

- Simple touch screen controls
- Cell phone and Tablet control via onsite WIFI
- Active and Sweep concentrations are controlled separately
- 4 standard event buttons (Start Well, Finish Well, Plugs, Sweep)
- 10 User setup event buttons (BOP, Sheel, or Tool Test / Short Trip, Etc)
- Pressure sensor cables (Circulating, Wellhead Pressure)
- Highly accurate chemical flow meter (down to 0.005 gallon/min)
- Precise chemical saves up to 40% saving from convectional Mixing Plants
- Industrial standard parts
- Watertight controls and sensors

Specification

- Chem rate (Max 6 GPM / Min 0.05 GPM)
- Power 240VAC / 60 amp / 1-3 phase
- Cell router for internet
- WIFI long range 2.4GHZ
- Weight 1200lbs
- Dimensions (96" x 60" x 56")
- Boost control 60psi @ 5BBL

Advance Data Collection System

- Comprehensive Event, Plugs, Sweeps, and Pressure Report
- 2D and 3D charts
- Chemical and fluid totals
- Real time analytics
- Coil unit data (connects with Orion software)
- Flowback return rates and tank levels
- Plug Weights and sweep returns

Secure Remote Viewing (view from office)

- Real time viewing from the office
- Report history and custom report viewed from office
- Download complete CSV files
- Analysis well trends
- Instant message operator
- Email reports

Support

- Includes 5-day on-site training
- 24-hour phone and remote login support
- Parts in stock and ready for delivery

Options

- Waukesha Pump
- pH Meter
- Fluid temprature inline meter
- Wireless pressure sensor
- Dye Injection system
- Viscosity inline meter
- Chloride inline meter
- 7BBL centrifugal pump

5695 Jack Creek Rd | Booneville, AR 72927 | O.(479) 675-0079 | F.(844) Mix-Chem
24hour support (479) 883-9496