

# SUSHITECH AUTOMATIC TRANSDUCER PRIVATE LIMITED

PUNYABOOMI LAYOUT ,1<sup>ST</sup> CROSS  
BIDHARHALLI ,VIRGONAGAR POST,BANGALORE  
,560049.

# ABOUT SAFE LOAD INDICATOR

- ❖ Today with the increasing demand for Safety in all types of crane SLI is very important for crane.
- ❖ This **safety load *indicator*** will alert the overload situation and protect from any accident.
- ❖ A **safe load indicator** has the capability of detecting the angle, weight of **load** lifted, and ground radius of any lifting device.
- ❖ It controls the lifting equipment to the level that it tries to keep the machinery functioning as per the manufacturer's suggested **safety** charts.

# WELCOME TO OUR COMPANY



Keeping in mind simple and reliable with cost effective sushitech research technologies manufactures safe load indicator for all types of cranes

# COMPANY PROFILE

## ➤ **HISTORY**

OUR COMPANY WAS ESTABLISHED IN 2013 .

## ➤ **COMPANY EXPERIENCE**

- I. WE has more than 7 years of experience in field of Safe load indicator .
- II. We has full knowledge of installation , maintenance , manufacturing and software coding of any types of sli for any types of crane.
- III. No Doubt Our company is new in market of SLI, But We are not new in this field.

# PRODUCT

## ➤ CRANE APPLICATIONS

### 1. CRAWLER CRANE

The Indicators suitable for CRAWLER CRANE crane for sushitech's range are st 1000 SMART, Safe Load Indicator / Load Moment Indicator System. The load sensing is done by Load sensor . Sushitech's SLI also provides overload protection , A2B and angle cutoff protection with better accuracy

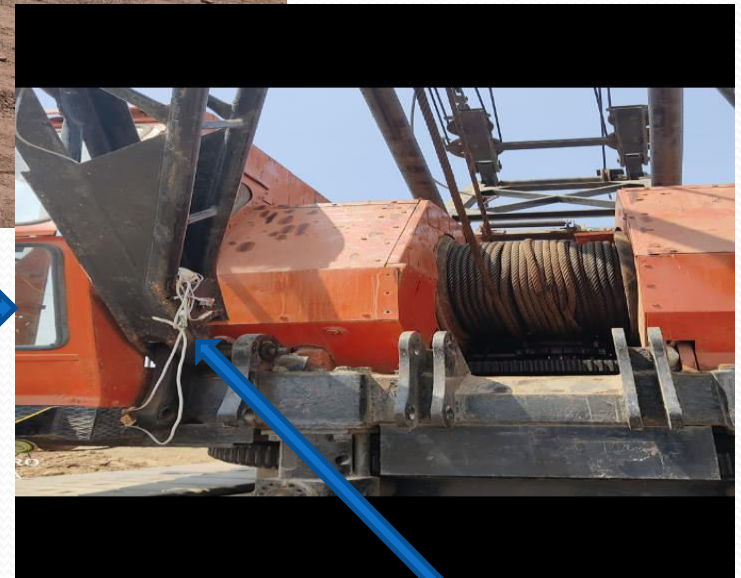
TENSIOMETER



LIMIT SWITCH



DISPLAY



ANGLE SENSOR

# ★ ESCORT F-15 CRANE

The Indicators suitable for Mobile crane for sushitech's range are st1003 , Safe Load Indicator / Load Moment Indicator / Total Load Moment Indicator System with angle and a2b cutoff system. In this type of system operator can set the boom length manually also





TENSIOMETER



DISPLAY



LIMIT SWITCH



CABLE REELING DRUM



CUT-OFF



- 2. TRUCK MOUNTED MOBILE CRANE.

The Indicators suitable for telescopic Boom Mobile crane for sushitech's range are st1003 , Safe Load Indicator / Load Moment Indicator / Total Load Moment Indicator System with angle and a2b cutoff system. In this type of system operator can set the boom length manually also.

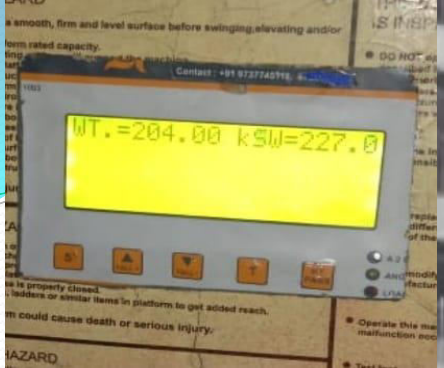


- 3. BOOMLIFT



Boom lifts **are used to lift people and materials up into the air.**  
Depending on the boom type – straight or articulating –  
it **can also be used to maneuver obstacles and round corners.**  
A **boom lift is mainly used to reach out and over** opposed to a  
scissor lift which is mainly used **to lift up.**





DISPLAY



PLATE FITTING

BUCKET



JALI TYPE LOADCELL FITTING



TENSIOMETER

LIMIT SWITCH

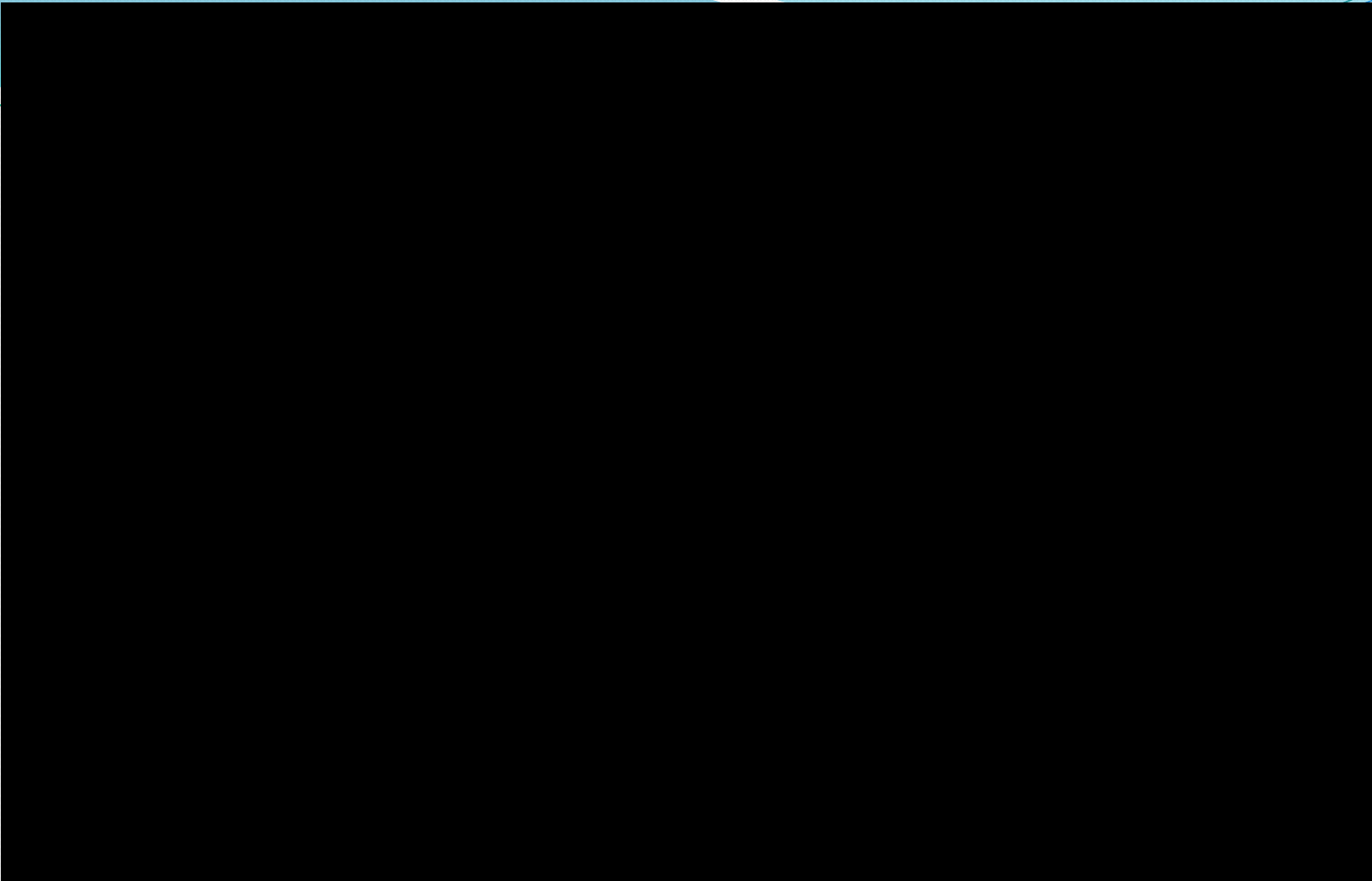
DISPLAY

MAT MACHINE



REDMI NOTE 9 PRO  
AI QUAD CAMERA





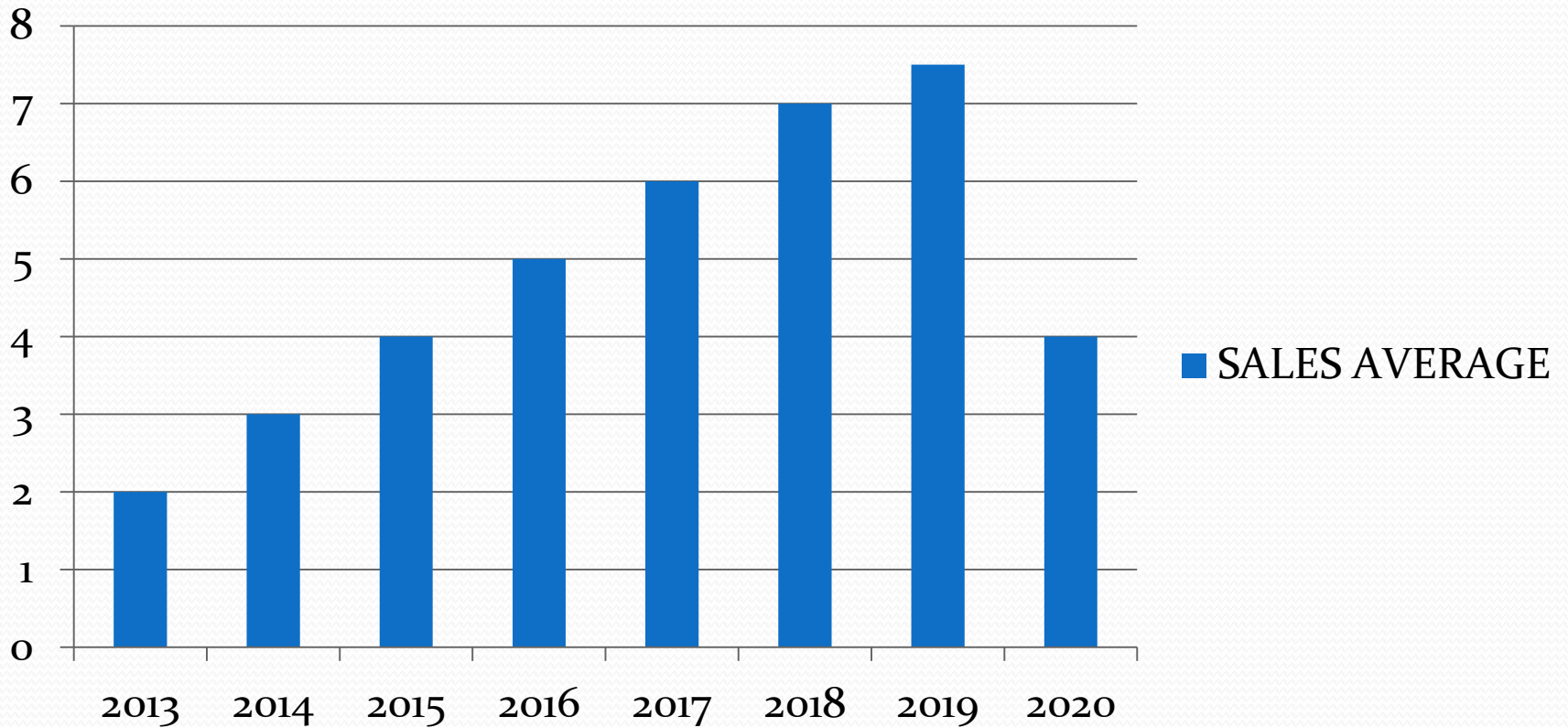
COMPANY MANUFACTURING & PRODUCTION.



**SAFE LOAD INDICATOR LOAD  
TESTING WORK ON SITE.**

# SALES GRAPH

## SALES AVERAGE



# HOW OUR COMPANY WORKS

**OUR  
COMPANY  
MOTTO IS TO  
PROVIDE BEST  
THING IN BEST  
PRICE.**

**STEP I -ONCE  
ORDER  
PLACED BY  
CUSTOMER.**

**STEP II- WE  
SCHEDULE DATE  
AND PLACE FOR  
INSTALLATON OR  
SERVICE OF SLI AS  
PER CUSTOMER  
REQUIREMENT.**

**STEP IV -A  
SERVICE  
ENGINEER  
WORK AS PER  
ORDER.**

**WORK  
PROCEDURE**

**STEP III-  
AFTER 100 %  
PAYMENT .WE  
REALEASE  
MATERIAL  
FOR SITE.**

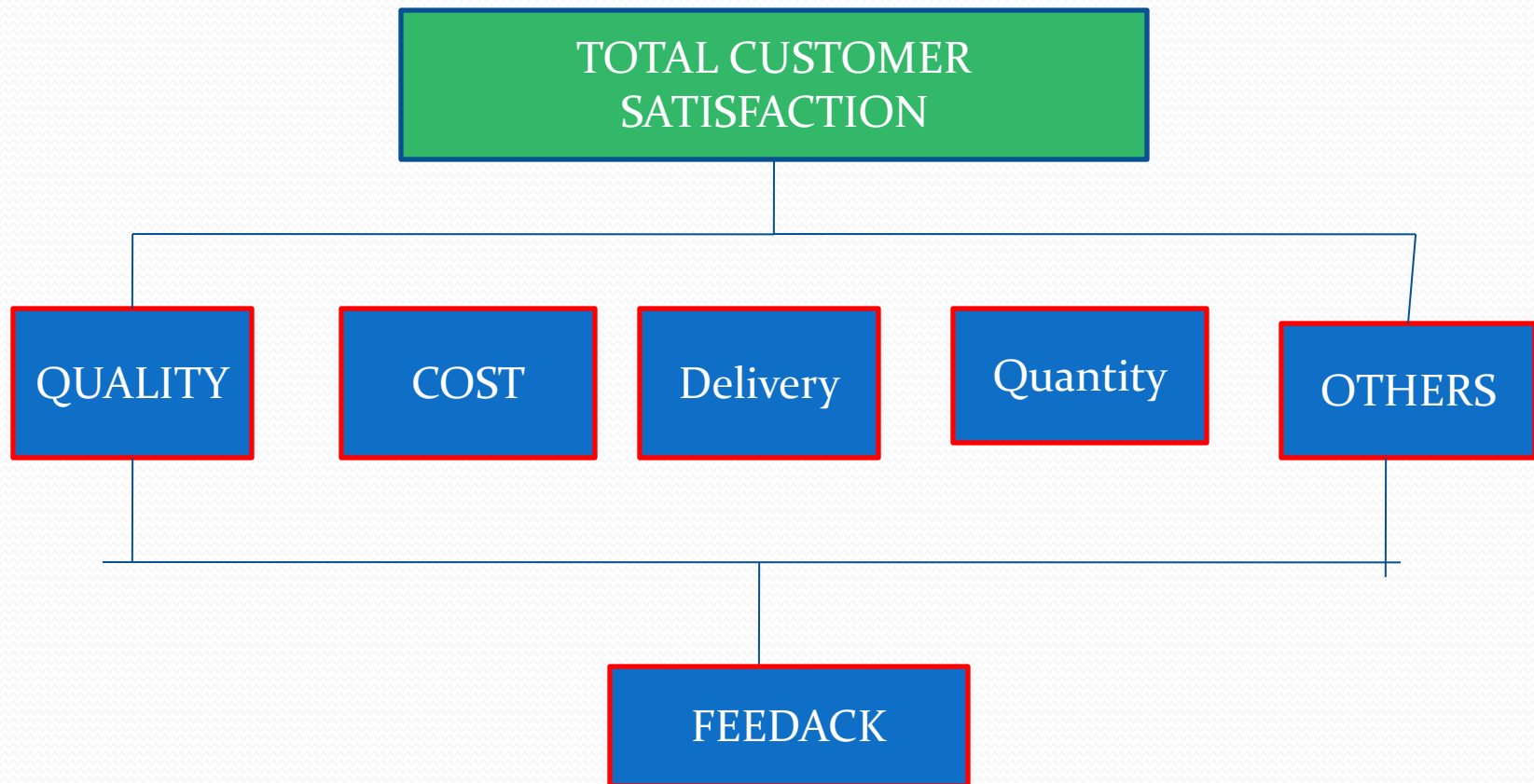
# SERVICE AFTER SALES

- Warranty for 12 months , during warranty parts & Service are free. Only Traveling , fooding & lodging will be charged.
- WE PROVIDE ASSURANCE TO CONSUMER THAT THEY CAN ENJOY LONG ,RELIABLE SERVICE AND PROTECTION FROM HARM.
- Dear Customers Replace Your Old SLI With New One with One year Warranty with only 20 to 25 Thousand depend on system for better Accuracy.





# RELATIONSHIP WITH CUSTOMER



# GET IN TOUCH WITH US



- [sushitechindia@gmail.com](mailto:sushitechindia@gmail.com)
- [sushitech45111@gmail.com](mailto:sushitech45111@gmail.com)
- [cptiwari2sushitechsli@gmail.com](mailto:cptiwari2sushitechsli@gmail.com)



**PROPRIETOR**

**MR. OMPRAKASH TIWARI – 9737745111.**

**HEAD OF MARKETING DEPARTMENT**

**MR. CHANDRAPRAKASH TIWARI - 8722545111.**

**OFFICE OPERATOR NO.- 8698345111.**

# OUR BRANCH IN INDIA.

## HEAD OFFICE

**ADDRESS**-B/O8, RAM BALRAM APT  
,AMBAVADI , NALLASOPARA (E).

## BRANCH IN BANGALORE .

**ADDRESS** -NO.30,PUNYABHOOMI LAYOUT 1  
,BIDDARHALLI, BANGALORE.

## BRANCH IN AHMEDABAD

**ADDRESS** - H/ 17 Shreya Exotica Vastral  
Ahmedabad

*THANK YOU*

