



# **CLOQUET COUNTRY CLUB**

# **MEMBER HANDBOOK**

**Cloquet Country Club  
400 Country Club Drive  
Cloquet, Minnesota 55720**

**Golf Shop 218-879-7997/Clubhouse 218-879-8858/Maintenance  
218-879-5240**

**Website: [Cloquetcc.com](http://Cloquetcc.com)**

## Table of Contents

### Page

Message from General Manager	3
Who Manages the Club (Flow Chart)	4
Board of Directors	5
Working Committees	6
Communication/Golf Rules	7-8
Clubhouse Rules	9
General Rules	10-11
Private Cart Ownership Policy & Term Definitions	12-13
Additional Driving Range Information	14

**Message from Bill Manahan,  
PGA Professional and General Manager:**

On behalf of the entire staff of the Cloquet Country Club, I would like to take this opportunity to welcome you as a valued member. The CCC strives to provide the finest private golf course experience in the area.

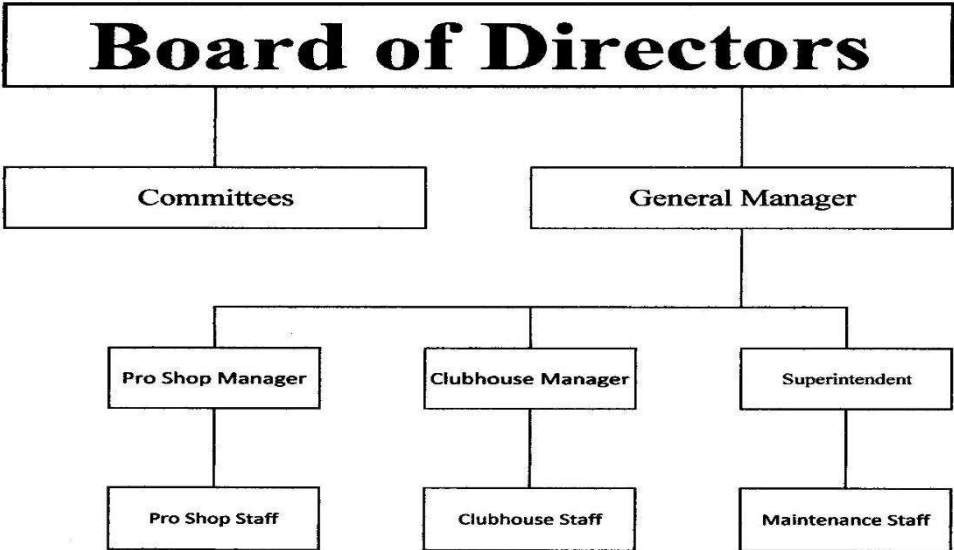
Our Club has an incredible history here in Cloquet. The original nine holes were built back in 1923 and has matured beautifully between the tall pines. The back nine was created in 2001 by Joel Goldstrand and has been a great asset to our Club as it develops and matures every year.

The Country Club prides itself on being built and developed on tradition. There are families that have been members for almost the entire existence of this golf course. As with anything this age, the stories and past lore are a valued asset which are appreciated and embraced as part of our history. You, as current members are now part of that history and will always be connected to the Cloquet Country Club.

One of the key ingredients to our successful longevity is the basic respect we have for one another. We provide many opportunities to have your voice heard and to make important decisions at our Club. I would like to personally encourage you to get involved in the operation and to serve on various committees as it will allow you to appreciate all aspects of the operation in a different light.

The goal of the staff is to make sure you as members feel welcomed and comfortable each time you come to the course. We look forward to getting to know you personally and we would like to express our gratitude to you for joining this exceptional golf club.

# WHO MANAGES THE CLOQUET COUNTRY CLUB



# **Cloquet Country Club**

## **Board of Directors**

- Jim Stafford - Club President**
- Mark Cool - Final Year**
- Kyle Young - Final Year**
- Patti Sheff - 1 Year Remaining**
- Mark Kayser - 1 Year Remaining**
- Skott Nielsen - 2 Years Remaining**
- Christine Korby - 2 Years Remaining**

# WORKING COMMITTEES

All members are encouraged to take an active role in the Club by joining a committee to help the Club as well as making your voice heard and make a positive difference. Please contact the General Manager or any Board Member to express your committee interest.

## **Finance Committee**

Reviews the Club's finances and develops the annual budget with assistance of the General Manager.

## **Tournament Committee**

Reviews the Golf Shop operations along with tournaments and events. Their goal is to improve the golfing experience of all golfers.

## **Greens Committee**

Reviews course and equipment maintenance plans and needs working directly with the Golf Course Superintendent.

## **Revenue Generating Committee**

Focuses on improving revenue for the club through new initiatives and adjusting pricing structure currently in place.

## **Men's League Committee**

Operates the Thursday afternoon Men's League – Format, budgeting and in season decisions concerning league operations.

## **Junior Golf Committee**

Designs and conducts the CCC Junior Golf Program to encourage participation and ongoing relationships to help foster future members of the Club.

## **Communications**

Cloquet Country Club will use various forms of communication to keep members abreast of events at the Club. It is important as a member to keep email and personal contact information up to date so communication does not get interrupted.

CCC will utilize the Club website (cloquetcc.com) to highlight upcoming events and store operational information for member review. The Club calendar and events schedules are found on the website along with meeting schedules and minutes and the latest Club related news. The Members Only area allows you to have contact information to other members and view items expressly for member's eyes only.

The Club will use emails to bring attention to items that are approaching shortly or of significant importance. These are called email blasts and will appear regularly in your inbox. CCC staff members will help set up your access to the Members Only area at the time of membership.

## **Golf Rules**

### **The Golf Course**

All golfers must register in the Golf Shop before their round. Starting on #10 is both a courtesy and pace of play issue. You must receive permission from the golf shop to start on #10. Fivesomes must play at an appropriate pace. Starting times and reservations may be made one week in advance by calling 879-7997.

### **Guests**

Your guests are welcome to play at the Club based on the following rules.

- All guests/social members are expected to pay greens fees.
- A guest/social member is welcome to play 5 times in a golf season. Exceptions may be made for out-of-town guests at the discretion of the Golf Shop.
- All guests/social members are expected to follow the same rules as members.
- Guests may not charge items in the Clubhouse or Golf Shop.

### Social Members

Club social members can play golf only under the same conditions as guests.

- All guests/social members are expected to pay greens fees.
- A guest/social member is welcome to play 5 times in a golf season. Exceptions may be made for out-of-town guests at the discretion of the Golf Shop.
- All guests/social members are expected to follow the same rules as members.
- Social Members may charge items in the Clubhouse or Golf Shop.

### Attire

Proper golf shirts (i.e., collared shirts) must be always worn. Cut-offs and tank tops are not allowed at any time. Shoes must be always worn, and no metal golf spikes are allowed.

### Invitational Tournament

The Cloquet Country Club Invitational Tournament is played yearly the second weekend in July. The course is closed to all other play during the Invitational.

### Range Balls

Are **NOT** permitted on the golf course. Playing privileges may be suspended if this policy is not followed.

### On Course Charging

Turn shack and beverage cart service on the golf course allows members to use either cash or their club charging privileges. The member will be asked to sign a slip if charging and that will be processed in the point-of-sale system at the end of the day by the staff member. Please refer to the club website for hours of operation of the on-course services.

### Electronic Device Policy

The use of electronic devices that produce sound (music, videos, games, etc.) shall be subject to the following restrictions. Before a device is used on the course, driving range or practice greens, members must confirm with fellow players that the use of such device is acceptable. The volume of such devices should be at a level that is heard only by the user and his/her fellow players so as not to disturb or distract golfers while golfing.



## Clubhouse Rules

### Charging Privileges

CCC Members have in house charging privileges as long as accounts are kept current and are secured by credit card. Members always have the option to pay cash or apply purchases to a credit card. If accounts are not kept up to criteria, charging privileges will be suspended.

### Attire

No members or guests will be permitted in the Clubhouse unless appropriately attired. Proper golf shirts must be always worn. Bathing suits, jerseys, tank tops, cut-offs shall not be considered appropriate attire. Shoes must be always worn in the Clubhouse.

### Tipping

When making purchases in the Clubhouse, a tip is **NOT** included with the bill. Tipping is encouraged. However, tabs that are not closed out at the end of the day will be assessed a 15% gratuity.

### Food Service

The Club offers complete dining service. Lunch and dinner are served beginning with the opening of the Clubhouse in the spring. For dining hours and availability, please refer to [cloquetcc.com](http://cloquetcc.com).

### Parties/Banquets

The Clubhouse is available at no charge to all members. Reservations are required and may be made by calling the Clubhouse. The Club expects that food service will be purchased from the Club. Items such as birthday or wedding cakes may be brought in from the outside.

### Guests

No guests will be served unless accompanied by a Club member.

### Locker Rooms

Showers are available in the men's and women's locker rooms. Towel service is complimentary; however, no towels are to be removed from the locker rooms.

## **General Rules**

### **Stock Requirement**

In order to be a member at Cloquet Country Club you must own at minimum one share of Club issued stock. This share represents 1/757<sup>th</sup> of the book value of the Club. Social members, junior members, members over the age of 80 and under the age of 35 are not required to own a share of stock for membership.

### **Dues**

Dues for golfing members may be paid monthly. The fiscal year for dues runs from November 1<sup>st</sup> through October 31<sup>st</sup>. One eleventh (1/11) of your annual dues will be billed starting in December. A member may pre-pay their annual dues at any time. Social members will be billed in March of each year. Payment in full is expected from Social Members within 30 days of billing. Although dues may be paid monthly, the dues structure is for the entire year. Therefore, members joining after December 1<sup>st</sup> will be expected to “catch up” from November 1<sup>st</sup>. This assures that all members pay for the entire year.

### **Assessments**

From time to time, the Club may assess the membership. All assessments must be approved by the Club membership at a general membership meeting

### **Past Due Accounts**

Members are expected to pay their monthly bill within 15 days of receiving it. Playing and charging privileges will be suspended for any member who is 60 days or more past due. Privileges will be reinstated when the account is brought back to current. Members who are delinquent in paying their bill are subject to termination by the Board of Directors.

### **CCC Club Account Security Policy**

Requires members to supply the Club with a valid credit card. Any past due accounts after 90 days will be applied to the credit card provided by the member. All stockholder/members are required to have a credit card on file.

### **Collection Process**

An account that has failed to meet all of the stipulations previously described will be turned over for collections. The member will be notified of the initial step in this process and be given an opportunity to arrange a plan for

payment. If the member fails to contact the Club or fails to uphold the plan arranged the account will automatically be turned over to collection.

### Board Meetings

The Club Board of Directors meeting schedule is posted on the Club's website. The meetings are held at the Cloquet Chamber of Commerce during the winter months and at the Clubhouse during summer months. If you have an issue you would like to put on the Board of Director's agenda, please contact the General Manager at 879-7997 at least 10 days in advance of the scheduled meeting.

### Annual Meeting

The annual meeting of the Club is held on the 3<sup>rd</sup> Wednesday in November. The exact date, time and location will be posted in the October newsletter. All members are encouraged to attend but attendance is not required.

### Men's Leagues

There are two men's leagues, morning, and afternoon each playing on Thursday. If you would like to be a member of any of the leagues, please contact the Golf Shop. Generally, the course is closed on Thursday afternoon due to men's league play.

### Women's League

The ladies leagues play on Tuesday mornings and afternoons. The course may, or may not, be closed on Tuesday depending on league play. Check with Golf Shop for possible tee times.

### \*Junior Golf Play

Junior members are permitted to play as outlined below:

Monday	Non-Event Day – All Day
Tuesday	Before 4 PM and After 6 PM
Wednesday	Before 4 PM and After 6 PM
Thursday	No Play
Friday	Before 4 PM and After 6 PM
Weekends & Holidays	After 12 PM

\* Exceptions to guidelines are allowed when accompanied by an adult member.

## **Rules – Seasonal Services**

1. A seasonal Pass does not pay for full cart; riders will be charged the Split Cart Rate if they are riding.
2. You are guaranteed 18 holes of use for a given day unless more is permitted by Golf Shop.
3. Carts must be in by dark or 9:00 pm whichever is first.
4. During the Invitational Tournament, the Club Tournament or other scheduled events, priority for carts will be given to entrants rather than spectators.
5. Cart and tee time reservations in advance will determine availability of carts.
6. All cart drivers must have a driver's license, 18 years old to rent a cart.
7. Maximum of 2 riders per cart
8. Damage to any cart or property will be the responsibility of the renter.

## **PRIVATE CART OWNERSHIP POLICY**

**Includes:**           **ONLY** "Grandfathered" Members, Lifetime Members & Building Site Owners (one cart/lot).

1. Owners must pay an annual trail fee of \$350.
2. All drivers must be at least 16 years old and have a valid driver's license.
3. Personal carts have unlimited usage & riders may ride free.
4. Cart owners are responsible for maintaining liability insurance and paying fees.

## **FAMILY UNIT (includes unmarried members)**

The Family Unit shall mean married couples and their children (from the current marriage, previous marriage, or adoption). An exchange student or a minor who is subject to guardianship of one or both parents and has permanent ties to the family will be considered part of the family unit. The children (19-22 years old) must be full-time undergraduate students and be no more than 22 years of age to still qualify under family unit, otherwise age 19 terminates status.

## **BUSINESS PARTNER**

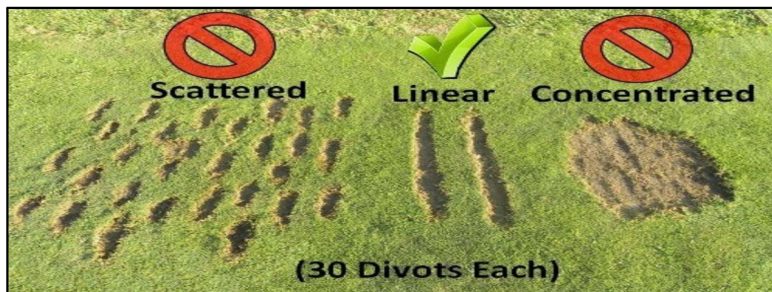
Cloquet Country Club invites its business partner's access to the Club and its facilities. You do not have the same privileges or obligations as a regular member. A business partner does not have access to charging privileges. It also is not required to pay assessments established by the Club. It does have access to the services offered including the practice facility, restaurant, and bar. The rounds cannot be used for outings, tournaments, or league play. Business partners cannot hold positions in the Club and do not possess voting privileges.

## **RESIGNATION PROCESS**

Members who do not wish to continue their membership for the following season must inform the Club by filling out a "member resignation form" prior to the next fiscal season which ends 10/31. This is different from previous years and will replace the written confirmation letter so we can obtain the information needed to complete the transaction. Please ask the Golf Shop for the form or get it off of the Club's website, as members will not be officially resigned until form is complete and returned to the bookkeeper.

## DRIVING RANGE INFORMATION

The Cloquet Country Club Driving Range is available for use by members and guests. Please take the time to inform the golf shop staff that you have a guest on the driving range and will be charged appropriately. If you as a member do not have a seasonal driving range pass, please let the golf shop staff know whether you are planning on a half-hour or hour range session. The fee can be charged to your member account or be paid in cash at the golf shop counter. Appropriate golf attire is required for driving range usage. If you have invited a guest to play golf their driving range fee is included in their golf guest green fee pricing. As always you as a member have the obligation to register your guest with the golf shop and indicate how your guest is paying for their play. This communication needs to be initiated by the member to golf shop staff so there is clarity in processing and collecting the proper fees.



When using the driving range teeing area please adhere to the guidelines pictured to the left. This divot pattern provides the CCC Maintenance Department the ability to fill and heal the affected turf faster. As you can imagine the importance of this procedure allows the teeing ground to be playable sooner and provide a better surface to practice. Below you will see these signs posted as a reminder.

### CCC Driving Range Fees

Driving Range fees are determined by the length of time of usage. A half-hour of use is \$5.00, and a one-hour duration is \$10.00. If you begin with a half-hour and opt to stay longer, please come into the golf shop after completion of hitting and pay the difference. Please be respectful of others practicing and control yelling or loud voices when practicing. Keep in mind the driving range is not the place for horseplay or “Happy Gilmore” activities.

### CCC Seasonal Driving Range Fees

Single Driving Range Pass	\$200+Tax
Family Driving Range Pass	\$250+Tax

*Please inform the golf shop staff if you are purchasing a seasonal pass. All CCC Junior Memberships include driving range as part of their membership cost.*