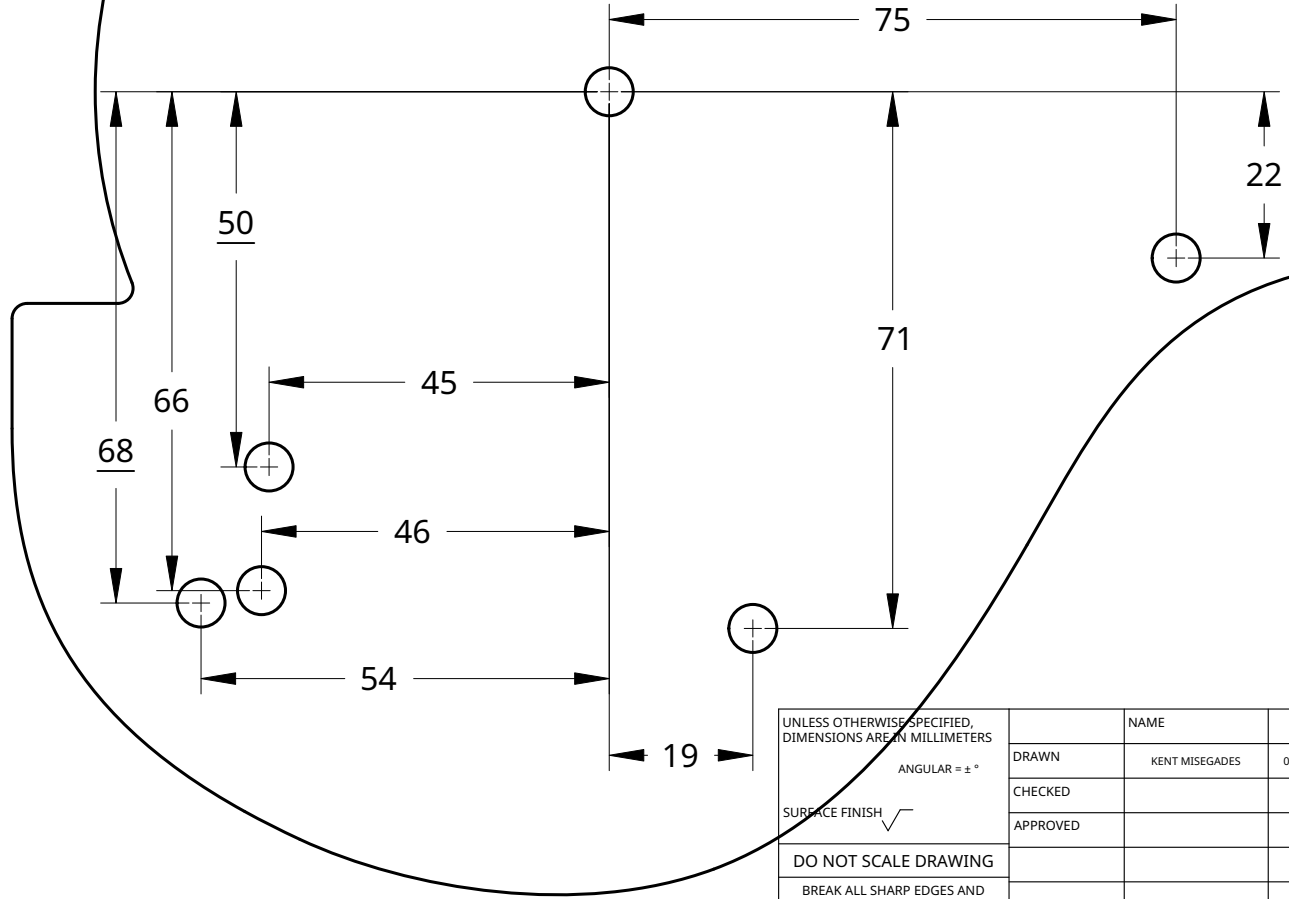


ALL HOLES NOMINAL 0.25" dia. (6.35mm)
 Location relative to cheek flange pivot hole. Drill or ream to final diameter as required. Drill only those holes required for your flange! Test fit flange before drilling - actual dimensions for your flange may differ slightly. All dimensions mm.



UNLESS OTHERWISE SPECIFIED, DIMENSIONS ARE IN MILLIMETERS		NAME	DATE	TITLE AeroSouth FS Rudder Blade - MARK III Hole location and description		
ANGULAR = ± °		DRAWN	KENT MISEGADES			08/09/2021
SURFACE FINISH		CHECKED				
DO NOT SCALE DRAWING		APPROVED				
BREAK ALL SHARP EDGES AND REMOVE BURRS		MATERIAL	FINISH	SIZE A	DWG NO.	
THIRD ANGLE PROJECTION				SCALE 1:1	WEIGHT	
				SHEET 1 of 1	REV.	