

# DRIVE HOCKEY

## ANALYTICS



## Player Development Benchmarking

### Metrics Tracked & Benchmarked

A small sample of performance data collected and processed from Express practices:

- Top & Avg Angular Skating Speed
- Top & Avg Linear Skating Speed
- Angular & Linear Use-of-Speed
- Avg & Top Distance per min.
- 3.0 Sprint to Full Speed Distance
- 1.5 Acceleration Burst Distance
- Sprint / Burst Acceleration Reps
- Top Acceleration Force
- Time from Top Speed to Full Stop
- Tight Turn Entry, Mid, Exit Speeds
- Tight Turn Radius, Distance Gain
- Wide Turn Entry, Mid, Exit Speeds
- Wide Turn Radius, Distance Gain

2023 - Coquitlam, Canada

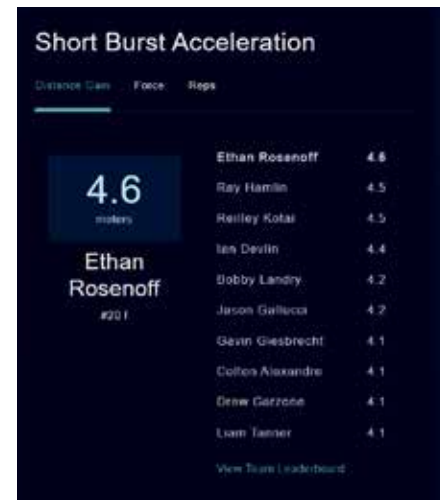
### Coquitlam Express Team Benchmarking

The Coquitlam Express are a Junior A club in the BCHL and have been using Drive Hockey's tracking system since 2022. The team is capturing practice and skill based data on their active players and prospects. The system is being used in practices, assessing athletic skill and benchmarking over time, providing players detailed insight on how they are performing compared to their peers and tracking their development progress over time in a fun, competitive way.

#### Competitive Practice Environments

In addition to benchmarking progress over time, the system offers a way to create friendly, fun competition during practices where players can compete for bragging rights across a variety of metrics.

*You play like you practice and practice how you play.*



*"We are excited to be working with Drive Hockey to offer our players in-depth analytics through their technology. This will give our program the advantage over other Junior Clubs in helping our players continue their development. Analytics don't lie. This system they've created will give direct information to our staff and players which will allow us to work on correcting any mistakes."*

*- Tali Campbell, General Manager*