



Fort Worth, TX

FAMILY GUIDE

Last Updated: 10/10/23

Proudly Sponsored By:



WELCOME TO CUB SCOUT PACK 435!

This document is an overview of Cub Scouting and how we bring it to life in Pack 435.

New families should also read the [Welcome New Cub Scout Family Guide](#)

Go here to join Pack 435: <https://my.bsa.us/662paa0435mb>

WHAT IS CUB SCOUTS?

The mission of Scouts BSA is to prepare young people to make ethical and moral choices over their lifetimes by instilling in them the values of the Scout Oath and Law.

We're all about encouraging boys and girls to make friends, be helpful to others, and do their very best no matter the outcome. With the help of powerful learning projects and exciting outdoor activities, we aim to teach children that doing their best can be a fun and rewarding experience—no matter the difficulty of the challenge.

Pack 435 upholds these ideals and promotes a family-friendly scouting program that is fun, challenging, and instructional.

To learn more about the aims and methods of scouting, visit <https://www.scouting.org/programs/cub-scouts/aims-and-methods/>



SCOUT OATH

On my honor I will do my best to do my duty to God and my country and to obey the Scout Law; to help other people at all times; to keep myself physically strong, mentally awake, and morally straight.

SCOUT LAW

A Scout is trustworthy, loyal, helpful, friendly, courteous, kind, obedient, cheerful, thrifty, brave, clean, and reverent.

SCOUTBOOK – PRIMARY COMMUNICATION AND ADVANCEMENT TRACKING

Upon joining Pack 435, you will be added to Scoutbook, Scouting's online communications and advancement platform. We send emails and track all advancement using Scoutbook.

You can manage your Scout's advancements at <http://scoutbook.scouting.org>

GOOGLE DRIVE – ADDITIONAL RESOURCES



Publicly shared resources are available via the Pack 435 Google drive. This includes a variety of parent/guardian resources, event information, and specific files we may need to share with the Pack.

Visit our Google Drive at <https://drive.google.com/drive/folders/1--2tFTyH4HpVB8RcRj2w0vlJab88FNTF?usp=sharing>

MEETINGS AND ACTIVITIES

DEN MEETINGS

Weekly | Monday @ 7pm – 8pm | @ Lighthouse Fellowship Church

One parent or guardian must attend the Den meeting with the Scout.

Den Leaders conduct meetings with help from adult volunteers and include fun activities such as playing games, completing crafts, hiking or other outdoor fun, practicing skits, songs, ceremonies, or field trips to local civic or community organizations.

The program is designed to complete many of the rank advancement requirements during den meetings but ultimately it is the responsibility of the Scout and their parent or guardian to complete all advancement requirements as detailed in the handbook.



PACK MEETINGS

Monthly | Last Monday @ 7pm – 8pm | @ Lighthouse Fellowship Church

One parent or guardian must attend the Pack Meeting with the Scout.

While the heart of the Cub Scout advancement program occurs in the home and at Den meetings, Pack meetings are the gathering of the Dens where the Pack recognizes achievements, plays games, sings songs, presents skits and fun. Dens will be asked to conduct opening and closing ceremonies, skits, demonstrations, and act as greeters.



PACK COMMITTEE MEETINGS

Monthly | Third Wednesday @ 7pm – 8:30pm | @ Zoom (virtual)

Leaders expected. Optional for all other parents/guardians.

Every pack is under the supervision of a pack committee, which consists of the parents and guardians of the Cub Scouts and leaders of the pack with at least three specific positions: committee chair, secretary, and treasurer. By handling administrative and support tasks, the pack committee allows the Cubmaster, den leaders, and their assistants to focus on working directly with the Cub Scouts.



Typical discussions include Pack operations, finances, and upcoming events.

ACTIVITIES AND EVENTS

Throughout the year, Pack 435 will conduct a variety of fun special events.

Some examples of Pack events include:

- Hikes
- Campouts
- Pinewood Derby
- Rain Gutter Regatta
- Blue & Gold Banquet
- Special Trips
- Summer Day Camp
- Family Overnights
- Halloween Festival
- End of Year Party
- Scout Sunday
- First Responder visit
- Stargazing
- STEM events
- Zoo/Nature Center
- Kite Flying
- Fishing
- Council Events
- Sporting Events
- Local water parks
- Community events

A schedule of planned pack events will be shared with all adults by the Pack Committee and the most current event information is always on our Pack's Google Calendar.

Information and updates for all events will be communicated via email and GroupMe and at Den/Pack meetings by Pack Leadership prior to each event.

GOOGLE CALENDAR



The Pack maintains a digital calendar from Google. We add all Pack events to this calendar. Though we may distribute calendars for discussion and planning purposes, note that the most current information will ALWAYS be the Google Calendar.

Scan or click to subscribe to the Google Calendar!

<https://calendar.google.com/calendar/ical/lhfpack435%40gmail.com/public/basic.ics>

For questions or ideas, please contact your Den Leader or member of the Pack Committee.

GROUPME



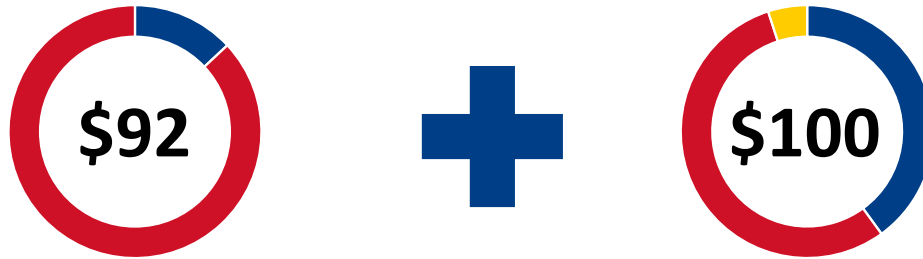
The Pack utilizes GroupMe as our instant communication platform. There are groups for Parents/Guardians, Leaders, Dens, and Events.

This is especially useful for Q&A outside of meetings and for planning/attending special events.

Scan or click to join our GroupMe!

https://groupme.com/join_group/85822388/828QoaoW

COST OF SCOUTING



BSA YOUTH REGISTRATION

- \$80 = National Membership Fee
- \$12 = Longhorn Council Insurance Fee
- *Additional one-time \$25 new scout Fee
- Assessed by National BSA every 12 months.

PACK 435 PROGRAM DUES

- \$40 = Scout Advancement and Awards
- \$55 = Pack Program and Activities
- \$5 = Contingency Fund
- Assessed by Pack 435 each August.

All members must be fully paid to remain in Scouting.

Most current information at: www.scouting.org/programs/cub-scouts/cost-of-cub-scouting/.

FUNDRAISING

We raise discretionary funds through fundraisers (e.g., popcorn, camp cards).

All proceeds used to fund Pack activities.

FINANCIAL ASSISTANCE

We aim to offer Scouting to everyone.

If you are experiencing financial hardship, please speak to the Committee Chair.

CUB SCOUT UNIFORM

The uniform builds pride, encourages good behavior, displays achievements, and identifies members. Dues include a Pack T-shirt. Families are responsible for other uniform items.

FIELD UNIFORM (AKA CLASS A)

The **Class A** Uniform is typically worn to pack meetings, district and council events.

- Official Cub Scout or Webelos Shirt
- Official Cub Scout or Webelos Hat
- Neckerchief
- Pants, jeans, or shorts
- Official Cub Scout Belt

ACTIVITY UNIFORM (AKA CLASS B)

The **Class B** Uniform may be used to show Pack pride or increase safety in public.

- Pack 435 or Official Cub Scout T-shirt
- Pants, jeans, or shorts
- Footwear appropriate for the event

Buy at: Longhorn Scout Shop 850 Cannon Dr., Hurst, TX 76054 | Or www.scoutshop.org

PACK STRUCTURE

THE CHARTERED ORGANIZATION



The responsibility of running Scouting units falls to a chartered organization, a local organization with interests similar to the BSA. This organization receives a charter from the BSA to use the Scouting program as part of its service to young people.

The chartered organization agrees to provide a suitable meeting place, adult leadership, and supervision for each of its units.

Pack 435 was first chartered in 1987. Our current chartered organization is Lighthouse Fellowship Church.

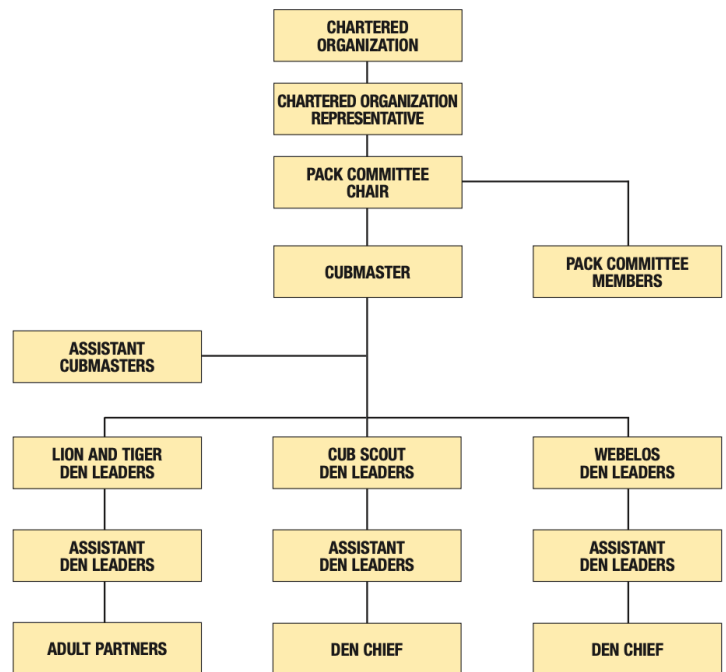
THE CUB SCOUT PACK

The pack is the Scouting unit that conducts the Cub Scout program. It is led by a pack committee, which oversees administrative functions, and a Cubmaster, who oversees program activities. The pack includes all the youth and adults involved in Cub Scouting.

Pack 435 belongs to the Lone Star District which is part of Longhorn Council.

We draw membership from families located in Eagle Mountain, Saginaw, White Settlement and other surrounding areas.

Pack Organization Chart



THE DEN

The Cub Scout pack is divided by age groups into several smaller groups, called dens.

Lion = K / Age 6	Wolf = 2 nd / Age 8	Webelos = 4 th and 5 th / Age 10
Tiger = 1 st / Age 7	Bear = 3 rd / Age 9	

Dens typically include six to ten scouts and most Cub Scouting activities are done in Dens. As we grow, there may be multiple dens for each grade to keep the experience personal.

ADULT LEADERSHIP POSITION SUMMARY

Committee Chair. Presides at all pack committee meetings. Recruits adult leaders and attends all Pack functions.

Cubmaster. Plans and carries out the pack program. Emcees pack meetings.

Den Leaders. Uses the Den Leader Guide and den meeting plans to lead the den at den meetings.

Advancement Chair. Maintains advancement records for the pack. Orders and obtains all badges and insignia.

New Member Coordinator. Welcomes new Scouts into the pack and coordinates orientation for new Scouting families. Leads recruiting and retention initiatives.

Secretary. Keeps records of the pack committee meetings and communicates with upcoming pack events and activities.

Treasurer. Keeps all financial records for the pack and gives a monthly financial report to the pack committee.

Other roles as deemed necessary.

ADULT PARTNERS

Your role as a parent or guardian is the secret to a successful Cub Scouting program!

The best job you can do is work with your child on their Cub Scout adventures! The Cub Scout handbook is full of age-appropriate activities; some of them you do together at home.

Den meetings are designed to complete required adventures to earn the badge of rank. When you complete a requirement at home, check it off in Scoutbook or tell your den leader so your child can be recognized for their achievements.

It's easy to get more involved in the Pack and we encourage all adults to volunteer.

TRAINING

Pack 435 ensures fully trained leaders, parents, and youth.

All registered adult leaders must annually complete:

- Youth Protection Training (YPT)
- Hazardous Weather Training

Registered adult leaders **may have additional training** requirements based on their role:

- Basic Adult Leader Outdoor Orientation (BALOO)
- Health and Safety
- Safe Swim Defense
- Safety Afloat
- Weather Hazards
- Leader Position-Specific Training
- Wood Badge

Anyone may create a user account and view the courses at <https://my.scouting.org>

Some courses require a practical in-person component (e.g., BALOO, Safe Swim Defense)

ADVANCEMENT AND RANKS

The Cub Scout Advancement program follows the school grade levels and aims to introduce new skills and areas of interest while building self-esteem, self-awareness, a sense of citizenship, and good sportsmanship. Adult involvement is crucial to achieve the advancement of the Scouts and **responsibility for advancement in rank rests with the parents/guardians**; verification and assistance of the Den Leader is secondary.

BOBCAT (NEW SCOUTS)

The **Bobcat** Badge is the first badge a Cub Scout earns when they join, with the exception of Lions (Kindergarten). The Bobcat Badge can be completed in one meeting and is designed to introduce the values of Scouting.



LIONS (KINDERGARTEN) AND TIGERS (FIRST GRADE)

Lions or **Tigers** join with an adult partner, usually the parent or guardian. A Lion or Tiger den should be no more than eight Cub Scouts and their adult partners.



An adult is selected to serve as the den leader and coordinates the meetings. Each adult partner takes a turn assisting or hosting meetings or activities with the den leader.



This shared leadership model is a great way to ensure the den leader has the help needed to deliver a quality program.

WOLVES (SECOND GRADE) AND BEARS (THIRD GRADE)

Children this age are becoming more independent, and activities are designed to meet their developmental needs.

A **Wolf** or **Bear** den is ideally no more than eight Cub Scouts of the same gender, a den leader, an assistant den leader, and often a den chief (an older Scout who helps the den leader).



WEBELOS (FOURTH AND FIFTH GRADES)

The **Webelos** den is much like the Wolf and Bear dens, but more emphasis is placed on learning leadership skills and preparing to join a Scout troop.



ARROW OF LIGHT

The **Arrow of Light** is the highest award that can be earned by a Cub Scout and the only award that can be worn on the Scouts BSA or Adult Leader uniform.



PACK 435 RULES AND EXPECTATIONS

SCOUT EXPECTATIONS

- Be on time
- Wear the scout uniform properly as shown in the handbook
- Foul or offensive language will not be tolerated. When in doubt, leave it out.
- When the Scout Sign is up, be quiet and listen to the Akela (leader)
- Follow Akela's (leader's) instructions and help others to follow them
- Take pride in yourself, your Pack, your community, and your country
- Have fun and do your best!

PARENTS/GUARDIANS EXPECTATIONS

Cub Scouting is based on parent/child participation. The success of Pack 435 program is based entirely on our adult participation. Parents are expected to contribute in these ways:

- Accompany your Cub Scout to Pack and Den Activities
- Help organize at least one special event each year
- Read your Scout's handbook and work on activities not covered in Den meetings. Cub Scouting is an opportunity to spend time learning and doing things as a family.
- Assist in maintaining order during any Pack or Den activities.
- Read the Scouts BSA policy on Youth Protection and take the on-line course.
- Foul or offensive language will not be tolerated. When in doubt, leave it out.
- Scouting is a team sport. Ask what you can do to help.
- Have fun and do your best!

SAFE SCOUTING

YOUTH PROTECTION

- **Buddy System:** No cub should leave the camping area, even to go to the latrine without at least one "buddy" or his or her parent.
- Two registered adult leaders 21 years of age or over are required at all Scouting activities, including meetings. A registered female adult leader 21 years of age or over must be present for any activity involving female youth.
- One-on-one contact between adult leaders and youth members is prohibited both inside and outside of Scouting. Only exception is a scout's parent/guardian.
- Discipline must be constructive and must reflect Scouting's values. Corporal punishment is never permitted. Disciplinary activities involving isolation, humiliation, or ridicule are also prohibited.
- Separate accommodations for adult males and females and youth males and females are required. In Cub Scouts, parents and guardians may share a tent with their family.
- Youth sharing tents must be no more than two years apart in age.
- All aspects of the Scouting program are open to observation by parents and leaders.

DRUGS, ALCOHOL, AND TOBACCO

Scouting activities are not a place to possess, distribute, transport, consume, or use any of the following items prohibited by law or in violation of any Scouting rules, regulations, and policies: alcoholic beverages or controlled substances, including marijuana.

Leaders should support the attitude that they, as well as youths, are better off without tobacco in any form and may not allow the use of tobacco products at any BSA activity.

CAMP SAFETY

- **Knives:** Only Cubs in the Bear program (3rd grade) and above who have successfully earned their "Whittling Chip" card may carry a pocketknife to designated Cub Scout functions. Lions, Tigers, and Wolves cannot use any knife, saw, or ax.
- **Tools:** No Cub Scout may use an axe or hatchet to cut firewood. Bow saws may be used under direct supervision by an adult.
- **Firearms:** Except for law enforcement officers required to carry firearms within their jurisdiction, firearms shall not be brought on Scouting activities. In Cub Scouting, shooting sports may only take place at District and Council organized events.
- Scouts BSA policy prohibits anyone from riding on fenders, hoods and trunks of cars or in open beds of trucks.
- Shoes must be worn at all times in camp. No running within the campsite.

FIRE SAFETY

- No open flames in tents.
- The campfire will be built and maintained by adults only. Cub Scouts are not permitted to start the fire except under leader supervision as part of a scout achievement.
- NEVER leave the fire unattended.
- Clear all burnable material within 10 feet of the fire and have a bucket of water nearby.
- No horseplay is permitted near the fire circle.
- Trees may not be cut. Only fallen wood may be gathered if allowed by camp leaders.
- When extinguishing the fire: spread logs, douse, and stir. Repeat until the site is cold.

AQUATICS

- BSA groups shall use Safe Swim Defense standards for all swimming activities.
- Adult leaders supervising a swimming activity must have completed Safe Swim Defense training within the previous two years.
- Safe Swim Defense standards apply at any body of water where swimming can occur.

For more information on Scouting Safety policies, visit the Guide to Safe Scouting:
<https://www.scouting.org/health-and-safety/gss/>