

# GLAGA GOLF NEWS

The Newsletter of GLAGA, the Greater Lansing Amateur Golf Association

*Your Membership Supports Junior Golf*

Volume 5 Issue 5 • December 2002

## GLAGA Elects New Officers

At the December 9, 2002 Board of Directors Meeting GLAGA elected new officers for 2003-2004. Paul Nieratko has resigned from the office of President and the Board of Directors after nineteen years (see letter pg. 10). Larry Meirndorf has resigned as Secretary but remains a member of the Board of Directors. New officers are as follows:

President	Gray Tuttle (former Treasurer)
Vice President	Terry Kildea
Secretary	Steven Mcleod
Treasurer	Michael Scieszka
Communications Coordinator	Jerry Harte
Membership Coordinator	David Seehase/Terry Kildea

***Congratulations new officers!!***

## Where's That Board Member?

Need to find a GLAGA Board member at a tournament? You may now identify GLAGA Board members by green nametags worn at all times other than when competing. Please take the time to introduce yourselves to board members you have not met. Please do remember that when a Board member is on the golf course competing in a tournament (no nametag) they are considered another competitor and should not be approached by other players outside of their group with rules or procedural questions.

## 2002 GLAGA Junior Tournament Grosbeck Golf Course August 5, 2002

Thirty-two players competed in GLAGA's third Junior Tournament held on August 5, 2002 at Lansing's Grosbeck Golf Course. "Every age group was competitive again this year," reported tournament director Dick Baker, "and the juniors certainly seem to enjoy tournament golf."

The tournament was open to GLAGA's Junior Scholarship winners and children of GLAGA members. A listing of the final results follows:

### Greater Lansing Amateur Golf Association 2002 Junior Tournament

#### 9 Years and Under (4 Holes)

Cliffie	Farr	19
Johnnie	Farr	23
Trent	Tuttle	27
Joshua	Sawyer	29

#### 10-11 Years (9 Holes)

Noah	Sawyer	47
Brian	Burt	52
Jordan	Major	60
Patrick	Abood	61
Joe	Olson	63
Kristy	Burt	67

2002 GLAGA Junior Tournament, continued on pg 2

Visit us online at  
**WWW.GLAGA.ORG**

**2002 GLAGA Junior Tournament**  
*continued from pg 1*

**12-13 Years (18 Holes)      16-17 Years (18 Holes)**

Michael	Kelly	84
Bryant	Karkau	92
Devin	Mongrain	95
Evan	Shumway	95
Robbie	Schiller	98
Jordan	Schiller	99
Jon	Petersen	99
Adam	Kwecien	120

Luke	Thode	85
Ryan	Clark	91
Brian	Bollman	98

**13-15 Years (18 Holes)**

Joshua	Burt	82
Adam	Beachnau	87
Tony	Kovac	89
Paul	LaMacchia	91
Devin	Montague	91
Jeff	Keilen	92
David	McComb	95
Zack	Brendahl	95
Sean	Petersen	97
David	Carr	106
Sam	Olson	109



**Equipment For Kids!!!**

As a part of GLAGA's on going effort to support Junior Golf, we are soliciting clubs, balls, bags and gloves for Juniors in the greater Lansing area. You may bring your donations to any GLAGA golf tournament or the clubhouse at Groesbeck any time they are open. Your donation will be given to the Lansing Park and Recreation Department for use by kids at the city of Lansing Municipal Golf Courses and to the Hunter Youth Golf Camp. Juniors who want to play but don't have equipment will be able to check out a bag, balls and clubs and return them to the starters at completion of play. Your donations are tax deductible. Ask a GLAGA board member for a donation receipt form.

**2003 GLAGA and ALL-CITY TOURNAMENT SCHEDULE**

May 3 - 4	GLAGA Spring Medal Play	the Emerald
June 13-15	ALL-CITY MATCH PLAY	Groesbeck
TBA	GLAGA Seniors Championship	TBA
TBA	GLAGA Stableford (tentative)	TBA
July 29	GLAGA Junior Championship	Groesbeck
August 8-10	ALL-CITY MEDAL PLAY	Forest Akers East and West
September 21	GLAGA 27 Hole Toughest Day(tentative)	Eagle Eye Golf Club

In January GLAGA will be mailing, and posting on the web site, ([www.GLAGA.org](http://www.GLAGA.org)), a survey for members and the general golf community in Lansing to get feedback concerning the date and venue for the Seniors Championship, desire to have a Stableford or second medal play event and desire to have a one day fall 2-man Team, Toughest-Day event. The survey will also be designed to gather opinions about the format for the All-City Match Play and the All-City Medal Play. We encourage you to return the survey in as prompt a manner as possible to assist us in finalizing the schedule of events for 2003.

## Greetings!

Welcome to the last issue of the **GLAGA Golf News** for 2002. It has been a while ... in fact it was late July that you last received a newsletter and information from your organization. Our apologies for the long break. After this issue we will be bringing you the first issue of 2003 during late February or early March. Tournament entry forms for the year will appear in that first issue for your convenience.

In this issue you can find **membership forms** so you may renew your membership early. You may want to think about giving GLAGA memberships as gifts this holiday season. Remember your membership dues support the **GLAGA Junior Golf Scholarship Program** and donations above the amount of your membership fee are tax deductible under GLAGA's 501-c-3 non-profit status.. Last year GLAGA provided sixty-two (62) full junior scholarships and 35 partial junior scholarships allowing qualified youth to play city of Lansing Golf Courses for 0.50 cents at nine hole facilities and, at Groesbeck, \$1.00 dollar for nine, or \$2.00 dollars for eighteen holes. What a really good feeling to know that you are contributing to the growth of the greatest game on the planet!

Also in this issue, you can find the 2002 All-City Medal Play and GLAGA Junior Championship results. Look for the preliminary **2003 Tournament Schedule** here as well. We hope the early notice of major tournament dates will allow you to put more of our events on your calendar. The **All-City Match Play** will again be contested at Groesbeck June 13 - 15. The **All-City Medal Play** returns this season to Forest Akers East and West, August 8 - 9 - 10. The GLAGA Board is discussing possible changes in format for each of these events for the 2003 season. The changes will only be implemented if they are deemed to be of potential benefit to the majority of the players, i.e., increased competitiveness and enjoyment for the events. Watch for a survey to be mailed in January to gather opinions about format for these events. The **Senior and Junior Championships** continued to generate increased interest in 2002 and will again provide an opportunity for the youngsters, teens and "old guys" to showcase their talents. The **Spring Medal Play**'s participation was down slightly in 2002, from 2001, but provided excellent competition and

camaraderie. The **Fall Best Ball** had to be cancelled due to lack of entries at the deadline. Perhaps the football schedule played a part in the low number of entries. Remember, that was when MSU was a team of promise (and still undefeated). For this fall we will once again try to resurrect a September event. This coming fall, a one-day, on a Sunday, 27-hole **Scramble/Best Ball/Total Stroke Team Toughest-Day** event is being discussed. Hmm ... I wonder who would make the best partner for that ?? A lot to look forward to for the coming year!

Of course with a lot to look forward to comes a lot of work as well. GLAGA will be looking for one or two new board members to join our forces in early 2003. If you know of someone you believe could contribute positively to Junior Golf and Amateur Golf Events in the Greater Lansing Area please feel free to submit their contact information to the Board for consideration. And join with me please in offering a standing ovation to all of the current GLAGA Board members for their dedication to the junior and amateur golf events they conducted for all of us this past year. A few rough spots, but overall a great job! Thank you guys!!!

I also must use some of my copy space to say thank you to our advertisers for 2002, especially our printer, BRD Printing, and our mailer, Capitol City Mailers. They were stellar with tight deadlines we gave them on more than one occasion. We encourage you to continue supporting all of the advertisers you find in our newsletters, with your daily business.

As I write this it is mid-November. Very low temperatures and a dusting of snow threaten my annual Thanksgiving weekend golf adventure. By the time you read this it will be deep into December. Oh, but for one more round before old man winter lays to rest the season. Then what will we have but our dreams, where we win on birdies at the eighteenth and collect the spoils from our friends and rivals. Ahh, GOLF!! The fascinating game of a lifetime!!

Wishing you all Smooth Swings  
in the coming year,  
Paul Nieratko, Interim President  
GLAGA

# It's Time to Renew Your GLAGA Membership!!!

## Benefits of Membership

Golf News & Updates

Tournaments for Members

Discounts on Entry Fees for the All City Stroke Play Tournament

\$30.00 Membership Fee (No Increase From 2002)

## 2003 GLAGA Membership Application

NAME \_\_\_\_\_ BIRTHDATE: \_\_\_\_/\_\_\_\_/\_\_\_\_  
(To Determine Senior/Junior Status)


ADDRESS \_\_\_\_\_ ZIP \_\_\_\_\_

CITY \_\_\_\_\_ PHONE \_\_\_\_\_

Return To: GLAGA, PO BOX 27092, Lansing, MI 48909


Please check one:

- I've included my \$30 Check or Money Order made payable to GLAGA for my 2003 membership fee
- I've included my \$50 Check or Money Order made payable to GLAGA for my 2003 membership fee and to designate \$20 (tax deductible) to sponsor a Junior golfer for the summer.




**HAWK HOLLOW GOLF**  
Extends Best Wishes  
For A Great Golf Season  
to All G.L.A.G.A Members!.


Hawk Hollow Golf Club  
517-641-4295



**NEW!**  
*The Executive Club*  
at Chandler Farms  
517-371-3484



And Coming Summer 2003!  
*Eagle Eye Golf Club*  
at Hawk Hollow



## GOLF HAUS

- Clubs
- Worldwide Mail Order
- Bags
- Open All Year
- Shoes
- Accessories



**NAMED AMERICA'S #1 DISCOUNTER**

Source - WBZ-TV BOSTON

**(517) 482-8842**  
Mon.-Sat. 9AM-5:30PM  
700 N. Pennsylvania • Lansing  
Corner of Saginaw & Pennsylvania





*Meridian Sun Golf Club  
Wishes all GLAGA members  
the best of luck this season.*

*Bring this advertisement in for a \$5.00  
discount off your next 18-hole round at  
Meridian Sun Golf Club.*

**This is a letter that Jerry Harte (a GLAGA Board member) tried to send to the Michigan High School Golf Coaches after observing some disturbing behavior by some of the top high school players in the state. Jerry informs us that the email was returned as undeliverable. He also sent it to the MHSAA office and passed it along to a coach headed to the state finals. He never received any response. We have chosen to reprint his letter – with his permission. It's something to think about.**

From: Jerry Harte  
Sent: Tuesday, October 15, 2002 9:15 AM  
To: 'coach@migca.org'  
Subject: player conduct

Greetings!

As much as I hate to be one of those people who rant and rave with complaints, I just need to share some observations with your organization.

I play a lot of golf (about 100 rounds per year). I have a single-digit USGA handicap. I play about 3 times a week at The Emerald (near St. Johns). There have been many high school events held there in the past few years. We regulars have long "marveled" at how different the course is when the high schoolers leave "our" course. We have wondered why these young people seem to have such little regard for the condition of the golf course they are playing. The course can host very large outings for several days in a row and other than all the Top Flite golf balls left in the rough and just out of play - you would hardly know that hundreds of people had just passed thru. We know IMMEDIATELY when the high school teams start descending on us - the greens are pecked to death with unrepaired ball marks and the fairways are strewn with unreplaced divots. We are constantly looking at each other in amazement and asking, "Why aren't they teaching these kids proper golf etiquette?" To me, respecting the facility and the game is just as important as hitting a drive 300 yards.

This past Sunday the carnage reached a level I just couldn't tolerate in silence any longer. After having Regionals at the facility for 2 days, many teams showed up for practice rounds on the weekend. I had the misfortune of following a large number of high school team groups. My God! The course looked like a war zone. The size and number of huge divots in the fairways was simply unbelievable. It was appalling and should have been embarrassing to anyone associated with high school golf.

Maybe you don't hear much in the way of complaints like this. Maybe most people just chalk it up to the general conduct and overall disrespect displayed by so many young people these days. I would hope that golf would be one place that young people could learn and practice, respect and stewardship that the game and our world need today. Clearly it is not happening enough right now. I'm certainly not expecting any kind of a response from you or anyone else. If you got this far, thanks for reading about my concerns.

**Jerry Harte**  
1-800-562-5779      www.hartestuff.com



# The Many Lessons of Golf

Golf teaches that we all have handicaps...and that hardly anybody knows what they really are.

Golf teaches that the best courses are the ones that hardly change at all what Nature put there in the first place.

Golf teaches us that we are ultimately responsible for our own actions and responsible for calling penalties on our selves, thus protecting our personal integrity and the integrity of the game.

Golf teaches that even though we need strict rules, we also need a leaf rule.

Golf teaches that although there are a few people who are honest in golf, but cheat in life, everybody who cheats in golf, cheats in life.

Golf teaches us that both success and failure are temporary.

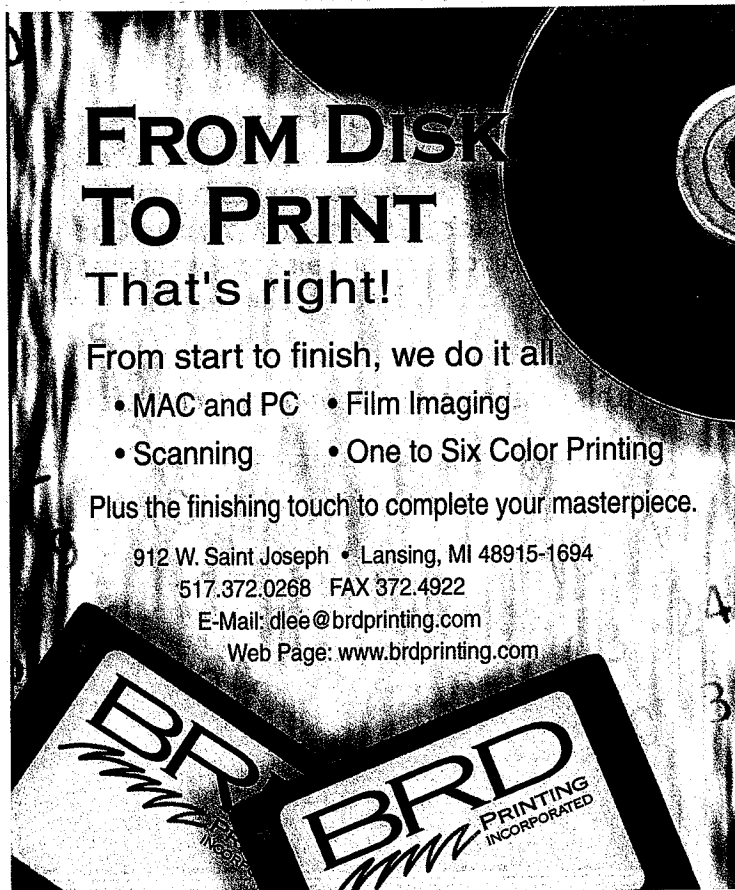
Golf teaches that although patience is a virtue, slow play is not.

Golf teaches us that by fixing our ball marks and repairing our divots we are insuring an equal quality of environment, opportunity and experience for all who follow.

Golf teaches that even though the best players have the most chances to win, the rest of us have the most chances to know the satisfaction of improving.

Golf teaches that on some misty morning or golden afternoon we are not really searching for the little white ball, but for that ethereal moment when our golfing friends, Nature, the Human Spirit and a Greater Spirit become one.

Adapted from an e-mail of unknown origin.  
(If anyone knows the original author or e-mail author whom we've paraphrased, let us know. We'll give proper credit in a future GLAGA Golf News)



**FROM DISK  
TO PRINT**  
That's right!

From start to finish, we do it all.

- MAC and PC
- Film Imaging
- Scanning
- One to Six Color Printing

Plus the finishing touch to complete your masterpiece.

912 W. Saint Joseph • Lansing, MI 48915-1694  
517.372.0268 FAX 372.4922  
E-Mail: dlee@brdprinting.com  
Web Page: www.brdprinting.com

**BRD PRINTING INCORPORATED**



**CAR QUEST PARTS PLACE** **THE PLACE** **3 Convenient Locations - One Near You!**

**AUTO PARTS** **Call Us... We're The Pro's**

- Domestic & Import
- Marine, Lawn & Garden
- Coast To Coast Guarantee
- Open 6 Days

**COMPLETE MACHINE SHOP SERVICE**

2702 E Kalamazoo Lans	482-4008
3503 W St Joe Lansing	267-1645
2423 N Cedar Holt	684-2159
174 W Maple Mason	678-2484
231 S Main Etn Kap	663-8172
320 Lansing Charlotte	543-7200
169 S Main Leslie	589-8555
147 E Ed River Willmsln	655-4323

Hawk Hollow

Second

# 18 for Hawk Hollow

Will Be One of the Nation's Best New Courses



**Eagle Eye Golf Club**, the newest addition to the mid-Michigan golf scene, is scheduled to open August 1<sup>st</sup>, 2003. Located north of East Lansing on Chandler/Abbott Road, **Eagle Eye** is a visually stunning transformation of a former sod farm and cornfield into a British/Irish links-style layout designed by hot new Golf Course Designer and Builder, Chris Lutzke, in collaboration with Pete Dye. Lutzke, a graduate of the Landscape Architecture Program at Michigan State University, brought 18 years of experience in Pete Dye's Golf Course Architecture organization to bear in the project for owner Daryl Kesler. Kesler was seeking to add a course of professional tournament caliber to the mid-Michigan area and Lutzke gave him that and more. From the back tees at 7308 yards, the par 72 **Eagle Eye** can play as long and difficult as any course in the country. At the same time four other sets of tees (6731, 6490, 6107 and 5151) and generous landing areas will allow every skill level of golfer to enjoy the challenge. In the final analysis, the length of the course is not the major factor in the



Hole #13. 481 Yards, Par 4. (Photo copyright, Paul Nieratko. 2002. All rights reserved.)

professional qualities at **Eagle Eye**. The true challenge is in the flow of the routing, the variety of shot values into the green complexes, the bunkering, the putting on the large undulating greens, and the winds from the surrounding

flatlands, including a potato farm, over which the westerlies whip, unimpeded. Oh, and there is water...did I mention the water?

In the construction process nearly 41 acres of wetlands and open water bodies were created, in part, to generate the material necessary to transform the flat characterless land into the tumbling magnificence resembling the British and Irish links land. Water then, is a part of shot-making strategy on thirteen of the eighteen holes. Although that much water is not a particularly British or Irish trait, it does allow each player to take as much risk as a match situation might demand, or the casual player cares to attempt. Lutzke's experience with Dye is apparent in the best ways at nearly every hole. In fact, two of Dye's other protégés and expert shapers, Scott Pool (Mountain Air GC, Burnsville NC) and Mike Puckett, were hired by Lutzke and teamed with him in the rough and finish shaping. The result is brilliant and bound to draw rave reviews.



*Hole #12, Par 3, 242 yards. (Photo copyright, Paul Nieratko, 2002. All rights reserved.)*

At **Eagle Eye** the set of par three holes are as challenging and memorable as any four anywhere. From the 160 yard second, aptly named "Whistle Stop", through the 219 yard fifth and the Parkland style monster 242 yard twelfth, to the 169-yard island-green, seventeenth, they will make or break many rounds. Oh, did I

mention number twelve will play into the prevailing wind most days? Ouch! Long even with the generous approach designed to allow one to run the ball onto the putting surface!!

If the par three holes are as memorable as any anywhere, the ten par four holes at **Eagle Eye** are as wonderful a collection of shot making challenges as can be found. The first hole at 432 yards turns slightly right along its length, reminiscent of the opener at Muirfield in Scotland. The short 349 yard third presents players with a risk-reward tee shot and, a very Irish, semi-blind, second shot. Iron or driver off the tee, this hole's second shot will likely spark controversy for the more narrow minded, and parochialistic mid-western folk. But surely, it is as masterfully executed as Old Tom Morris



*Hole #15, Par 4. Approach to the Green. (Photo copyright Paul Nieratko, 2002. All rights reserved.)*



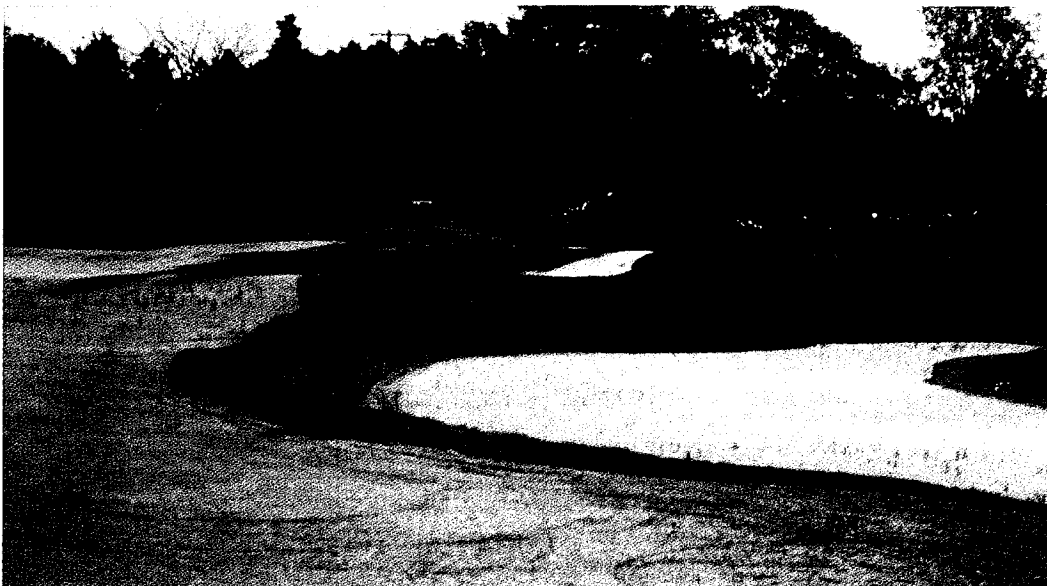
himself could conger. Holes six at 388 yards, seven at 413 yards, and eight at 461 yards, are the longest stretch of "same-par" holes on the course. Six and seven fairways are cradled by the ever-present Tall and Red Fescue covered mounding, which here successfully eliminate and minimize the potential visual and audible intrusions from the courses southern boundary, State Road. The second shots on these two moderate length par fours must find the correct part of the greens to ensure the expected two-putt. Hole eight presents the first of three par fours over 450 yards in length. At eight Lutzke managed to resist the temptation to include the cliché double-green, (with hole number one's green), instead electing to separate their putting surfaces with bent-grass mounds and chipping swales.

On the inward nine, holes ten at 403 yards, and eleven at 437 yards, demand proper positioning of the tee ball to allow the best angle of attack to tournament pin positions. Hole thirteen may turn out to be the most talked about of all the four pars. At 481 yards it is certainly the longest. Here you can chew off as much as you dare with driver. The forced carry over wetland and water is to a fairway angled in



*Hole #9. Par 5, 560 Yards. (Photo copyright, Paul Nieratko. 2002. All rights reserved)*

left-to-right, bunkers on the far side turning the landing area toward the water. The green complex is challenged by subtle and severe mounding, with pot bunkers on its left, and the water lapping at the greens right edge. (*Mama!*



*Hole #18 Green Complex. As seen from the second landing area. (Photo copyright Paul Nieratko. 2002. All Rights Reserved.)*

*Get me a cold-cloth to stop the sweating please!)* Fifteen, at 394 yards, allows one to relax, if only for as long as the tee ball, before facing a mid-to-short iron to a plateau green fronted by a deep pot bunker and surrounded by deep, bent-grass swales. Sixteen finishes the par fours at 453 yards.

Some may argue this, rather than thirteen, is the best of the par fours. Tee ball position certainly will make the angle of a second shot seem more or less difficult and thus, alter ones perception of shot value and playability. The green, guarded by a deep railroad tie bunker and water on the right, is smaller than most and will be one of the more elusive on the course.

The par five holes finish **Eagle Eye** in a fashion enhancing the layouts rhythmic flow. Number four at 608 yards, nine at 560 yards, and fourteen at 555 yards, fit seamlessly into Lutzke's routing. Four is a true, three shot test, typically into the wind, that the professionals would rarely reach in two. Water guards the left side of the green making any caliber player's attempt at going home in two more foolish than wise. The ninth hole features a split fairway around a center fairway bunker complex, which will allow the long hitters the opportunity to attempt the green with their second shot, if the drive is played up the narrow left side. The fact this hole will typically play down wind will aid the bold and accurate attempt. Number fourteen, also playing down wind, will allow the properly placed tee ball, once again up the left side, another opportunity to get home in two. Like the par three twelfth, the fourteenth has a Parkland flavor to it, but does not depart its British/Irish roots. Beware the deep pot bunker guarding the front right of this green!

After the island green seventeenth, the closing par five eighteenth then had to be something special to avoid a letdown. The hole does not disappoint. Guarded by water up the entire right side and 592 yards long, the last culminates with a green and bunkering scheme which reveals Lutzke's genius as a budding designer, construction manager and expert equipment operator. The approach to the green is flanked on the right by the water and a Lutzke original "frog-hair" bunker, above which rise a series of "Dye-abolical" pot bunkers protecting the severely sloped and undulating green. Bunkers to the back, and a rolled edge along the left side, make favoring the left on approach shots the less risky, yet still unnerving, play. Did I mention the severely sloped green? You do not want to be above the hole here, but you must take enough club to insure making the green or par will almost always be a mystery!

Depending on the severity of the Michigan winter, minor repairs due to snowmelt runoff, and the spring and summer growing conditions, **Eagle Eye** should open to rave reviews this August. As a first solo design, this effort puts Lutzke in a class with great young designers David Kidd (Bandon Dunes in southern Oregon) and Mike Stranz (Tobacco Road in North Carolina). Long overdue in the conservative collection of public accessible courses in Southern Michigan, Chris Lutzke and **Eagle Eye Golf Club** have set a new standard, which will most certainly draw national acclaim. With great anticipation, we all await the August opening.

The author, **Paul Nieratko**, is a freelance writer, and the recently retired past-President of the Greater Lansing Amateur Golf Association, where he has served as a board member and in tournament administration for nineteen years. He teaches the Golf Course Architecture Design Studio in the Landscape Architecture Program at Michigan State University and may be reached by e-mail at: [nieratko@msu.edu](mailto:nieratko@msu.edu)

## **Eric Cowles Earns Second Straight All-City Medal Play Championship**

Eric Cowles of East Lansing successfully defended his All-City Medal Play title with a three shot victory over runner-up Bob Matthiesen. Cowles fired a three under par score of 213 (69-70-74). Two years ago it was Matthiesen who bested Cowles at Forest Akers with a birdie at the 54<sup>th</sup> hole to hold off a late Cowles charge. Cowles obviously took something from that experience as he held his second-day three shot lead over Matthiesen (70-72-74: 216) to the conclusion of Championship Sunday. Chris Johnson finished alone in third place, eight shots back at 221 (72-71-78). Spring Medal Play and All-City Match Play Champion Eric Wilutis began the day in second place just two shots back faded to fifth place with a closing round of 82(74-67-82:223).The low round of Sunday's play at Timber Ridge was 73 by Bill Schmidt of Okemos.

In first flight, Dan Leung fired an even par 72 (77-82-72:231) to hold his two shot lead and best Dave Seehase's 72 (81-80-72:233) by two shots. Sam Burman finished third with a fine closing round of 76. (82-77-76:235).

Second flight honors went to Brian Bates (80-87-76:243) in a playoff victory over Bill Hallen (87-80-76:243). Third place was split three ways at 245 by Blake Hazen, Peter Quackenbush, and Scott King.

Mark Jasonowicz captured the title in third flight with a Sunday personal best round of 78. Jasonowicz finished seven shots clear of second place finishers Donovan Traverse and Mike Scieszka.

### ***Congratulations to the All-City Champions for 2002!***

<b>FIRSTNAME</b>	<b>LASTNAME</b>	<b>DAY 1</b>	<b>DAY 2</b>	<b>SUMM</b>	<b>DAY 3</b>	<b>FINAL</b>	<b>PLACE</b>	<b>FLIGHT</b>
Eric	Cowles	69	70	139	74	213	1st	CHAMPIONSHIP
Bob	Matthiesen	70	72	142	74	216	2nd	CHAMPIONSHIP
Chris	Johnson	72	71	143	78	221	3rd	CHAMPIONSHIP
Jonathan	Pauli	72	76	148	74	222	4th	CHAMPIONSHIP
Erik	Wilutis	74	67	141	82	223	5th	CHAMPIONSHIP
Josh	Orler	75	71	146	77	223	5th	CHAMPIONSHIP
Craig	Chambers	65	85	150	75	225	7th	CHAMPIONSHIP
Jerry	Blake	77	74	151	75	226	8th	CHAMPIONSHIP
Bill	Schmidt	75	79	154	73	227	9th	CHAMPIONSHIP
Dave	Kaufman	80	73	153	75	228		CHAMPIONSHIP
Ed	Watson	76	75	151	78	229		CHAMPIONSHIP
Bill	Kost	81	71	152	78	230		CHAMPIONSHIP
John	Pryce	78	75	153	78	231		CHAMPIONSHIP
Tommy	Allen	74	76	150	81	231		CHAMPIONSHIP
Josh	Valencic	82	75	157	75	232		CHAMPIONSHIP
Dave	Greeley	69	84	153	79	232		CHAMPIONSHIP
Ryan	Franklin	80	69	149	83	232		CHAMPIONSHIP
David	Lee	81	75	156	77	233		CHAMPIONSHIP
Scott	Zbojniewicz	75	81	156	77	233		CHAMPIONSHIP
Paul	Stewart	82	72	154	79	233		CHAMPIONSHIP
Dan	Leung	77	82	159	72	231	1ST	FIRST
Dave	Seehase	81	80	161	72	233	2ND	FIRST
Sam	Burman	82	77	159	76	235	3RD	FIRST
Jim	Bissell	79	79	158	78	236	4TH	FIRST
Lee	Peters	78	84	162	77	239	5TH	FIRST
Steve	McCuaig	80	81	161	78	239	5TH	FIRST
Sam	Abood	81	77	158	81	239	5TH	FIRST
Nate	Gunthorpe	82	83	165	75	240	8TH	FIRST

*2002 All-City Medal Play, continued on pg 8*

## 2002 All-City Medal Play

continued from pg 7

FIRSTNAME	LASTNAME	DAY 1	DAY 2	SUMM	DAY 3	FINAL	PLACE	FLIGHT
Dave	Koenigsnecht	81	81	162	79	241	9TH	FIRST
Vic	VanDerBos	81	79	160	81	241	9th	FIRST
Jim	Barrett	77	83	160	81	241	9th	FIRST
Kirk	Pentecost	86	77	163	79	242		FIRST
Scott	Lamacchia	82	77	159	83	242		FIRST
Gray	Tuttle	79	87	166	77	243		FIRST
Aaron	Manchester	82	80	162	81	243		FIRST
Rob	Reck	76	82	158	85	243		FIRST
Dan	Balogh	79	79	158	86	244		FIRST
Stu	White	85	81	166	80	246		FIRST
Chad	Risner	82	82	164	82	246		FIRST
Royce	Wolverton	81	78	159	87	246		FIRST
Brian	Bates	80	87	167	76	243		SECOND
Bill	Hallan	87	80	167	76	243		SECOND
Blake	Hazen	83	85	168	77	245		SECOND
Peter	Quackenbush	90	78	168	77	245		SECOND
Scott	King	86	81	167	78	245		SECOND
Mike	Raymond	86	82	168	79	247		SECOND
Ed	Hooks	80	88	168	80	248		SECOND
Anthony	Vogl	82	87	169	80	249		SECOND
Bob	Burnett	91	79	170	80	250		SECOND
Rick	Volkers	84	83	167	83	250		SECOND
Gary	Broughman	79	90	169	82	251		SECOND
Herb	Schoepke	79	93	172	80	252		SECOND
Michael	Boucher	87	83	170	82	252		SECOND
Tony	Forsthoefel	83	86	169	83	252		SECOND
Matt	Gelfius	85	84	169	84	253		SECOND
Andrew	Kline	81	92	173	81	254		SECOND
Dan	Horan	79	89	168	86	254		SECOND
Ken	Saville	78	90	168	86	254		SECOND
Dale	Hawkins	90	83	173	83	256		SECOND
Tim	Carey	81	90	171	86	257		SECOND
Mark	Jasonowicz	93	84	177	78	255		THIRD
Mike	Scieszka	88	92	180	82	262		THIRD
Donovan	Traverse	89	90	179	83	262		THIRD
Ron	Parsons	93	85	178	85	263		THIRD
Isaac	Oswalt	86	92	178	86	264		THIRD
Nick	Klaver	98	82	180	85	265		THIRD
Mark	Dickens	89	88	177	88	265		THIRD
Jim	Sutton	94	83	177	88	265		THIRD
David	Richey	96	85	181	85	266		THIRD
Grant	Solik	92	91	183	84	267		THIRD
David	Anderson	85	94	179	88	267		THIRD
Sean	Coe	91	88	179	89	268		THIRD
John	Stahle	96	85	181	88	269		THIRD
Doug	Burt	85	95	180	89	269		THIRD
Allen	Vieth	87	92	179	90	269		THIRD
Billy	Burke	88	92	180	91	271		THIRD
Patrick	Spencer	104	84	188	84	272		THIRD
Jacob	Leyer	80	97	177	95	272		THIRD
Rick	Powtak	87	102	189	88	277		THIRD
Tate	Schanski	93	89	182	96	278		THIRD

# Adventure Parks FunTyme

Golf Driving Range  
Adventure Golf  
Food/Grain Room  
Batting Cages  
Go-Carts

East Location  
3384 James Phillips Drive  
Okemos  
332-7944

West Location  
6295 E. Saginaw Highway  
Grand Ledge  
627-6607

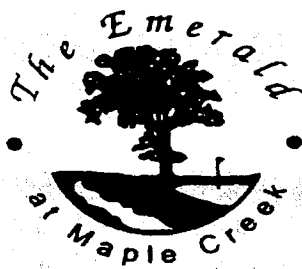
South Location  
800 N. Hogsback Road  
Mason  
676-1942

## Ledge Meadows Golf Course

- New Championship Layout
- Golfonics Indoor Golf



**627-7492**



8103 N. US 27 • St. Johns, MI 48879  
1-800-924-5993

### FREE CART

Mon-Thurs before 3:00  
minimum 2 golfers

Must bring this coupon (except holidays)

## KILDEA COMPLETE CAR AUTO REPAIR

Over 30 Years Of  
Professional Quality

AMERICAN &  
IMPORT

Good Luck  
To All  
GLAGA Golfers

#### RENTAL VEHICLES AVAILABLE

Amoco Station - Okemos  
Grand River @ Okemos  
**349-4830**

Service Center - E. Lansing  
Grand River @ Park Lake  
**337-2500**

Marathon Station - Lansing  
St. Joe @ Waverly  
**323-8150**

Service Center - Lansing  
Southland @ Martin L. King  
**394-4700**



(517) 655-4694  
Fax (517) 655-5697

205 W. Church  
Williamston, MI 48895

## Oak Lane Golf Course



FREE round of golf with a paid round and  
riding cart. Valid M-F; after 2 pm weekends  
& holidays.

**(517) 521-3900**

800 N. Main St. • Webberville, MI 48992  
15 Minutes East of Lansing  
15 Minutes West of Howell

December 9, 2002

The GLAGA Membership and  
The GLAGA Board of Directors,  
C/O Larry Meirndorf, Secretary of the Board

Dear Larry, Members of the Board, and GLAGA Membership,

Due to career, family and personal reasons I herewith submit my resignation from the GLAGA Board of Directors effective December 31, 2002. During my 19 years of service to the amateur golf community in Lansing I have had the privilege of working with many innovative, fine and caring individuals. From the originators and early members of the Board to the most recent Board members, I hold the highest respect for each of you and your commitment to volunteerism for amateur golf.

As the cumulative effect of all of the past and present Board member's efforts, GLAGA is at a point where there has been no better cohesion among Board members than currently exists and there has been no better vision for what amateur and junior golf in Lansing has the potential to become. The Junior Scholarship Program, the Equipment for Kids Programs, GLAGA tournament administration, ALL-CITY tournament administration, CAWGA and the GLAGA GOLF NEWS newsletter are the visible examples of those efforts. In the future I encourage you to promote GLAGA by developing a "New Member Information Packet", expand junior golf opportunities and clinics, support Hunter's Youth Golf Camp, pursue and support the completion of the First Tee Learning Center, and develop partnerships with local businesses and our sister organization, CAWGA. These things will enable you to continue to pursue our mission and, the ideas and vision each of you bring to the table.

To the current Board members: You should all be proud of what you have accomplished as a part of the Board and you should strive to continue to keep Junior and Amateur Golf in the city growing. It's hard work. At times it is thankless. Through the years we have constantly been reminded that "You can't keep all of the people happy all of the time" even though I know we have listened to all suggestions and complaints and taken action with the total playing memberships best interests at heart. That has been a hallmark of GLAGA. I encourage you as a Board to remember that and to continue to make the wise decisions necessary to grow the game of golf in Lansing.

To the current GLAGA membership and the golfing community in Lansing: Please continue to support your local amateur golf association, GLAGA. Every one of the Board truly loves the game and they put in many long hours to bring quality competitions to this community for you and to promote affordable golfing opportunities for economically challenged juniors. Stay involved, become more involved, and share GLAGA with your friends.

I would be remiss if I did not say a public thank you to Jim Donahue, Harold Singleton, Bob Aumaugher, Don Ballard, Peg Lear (Beardon), Tim Russell, Stu White, and all of the former and current Board members. I look forward to seeing all of you while playing in the traditional and new events of the Association and the All-City Championships for which we have taken responsibility. They are GLAGA's reason for being.

I thank you for allowing me to serve and I am honored to have worked for and with all of you. Best wishes for every success in all of your endeavors.

Birdies,

Paul Nieratko  
Outgoing Interim President  
Greater Lansing Amateur Golf Association

Respectfully Submitted,  
December 9, 2002



- \* Full Service Restaurant
- \* Banquet & Business Lunches
- \* Official Mizuno Clubfitter
- \* Professional Pro Shop, Equipped With Top Of The Line Golf Accessories
- \* We Have Expanded!
- \* Now 27 Holes of Championship Golf

John Nagel, Golf Professional  
 Call for Reservations  
**517-566-8055**  
 2 Mi. East of Sunfield, Mi  
**Golf At It's Best on Dow Road**

## Indian Hills Custom Golf

**JUNIOR TOURNAMENT**

JULY 15, 16 • 14 YRS & YOUNGER  
 4887 Nakoma, Okemos, MI 48864

PCS Certified Class A Clubmakers

J.C. Petersen • Jim Gwardzinski • Sam Anderson  
 349-1010

### Site of the GLAGA Senior Championship



**Willow Wood  
 Country Club**

Follow I-96 to Grand River Exit (#77) Travel South to Cutler Road and turn west. Turn South at Charlotte Highway to Sandborn Rd and turn east. Call (517) 647-1984 for tee times.

**CALL**

**(517) 647-1984**

**FOR TEE TIMES**

**Willow Wood is a Soft Spike Only course.**



355-1635

## Forest Akers Golf Courses

- 36 Holes Open to the Public
- Redesigned holes add new character
- Arthur Hills Championship Layouts
- Outings for up to 250 people
- Tee times may be made 7 days in advance
- MSU Logo shop and complete Pro Shop

Mt. Hope and S. Harrison - East Lansing

## Tasty Twist

### Have A Great Golf Season

Come join us for a refreshing treat after your next round of golf.

**East Lansing Tasty Twist**  
 1307 Grand River Ave  
 East Lansing, MI 48823

## Royal Scot

Site of the  
 All-City  
 Medal Play



- New Range
- New Pro Shop
- Sports Lounge
- Will Accept All Competitors Coupons
- New Lockers
- New Way of Doing Business

4722 W. Grand River  
 321-6220



**TIMBER  
 RIDGE**

16339 Park Lake Road  
 East Lansing, MI 48823  
 517/339-8000  
 FAX 517/339-4465

*"Golf at its Finest"*

*Group & Individual  
 Lessons Available*

Greater Lansing Amateur  
Golf Association  
PO BOX 27092  
Lansing, MI 48909

NOT FOR PROFIT  
U.S. POSTAGE  
PAID  
LANSING, MI  
PERMIT #730

*Get Into The Swing Of Things This Season!*

Paul Nieratko President (353-7880)	Mike Scieszka Development, (655-3254)
Gray Tuttle Treasurer, (372-7606)	Dave Kaufman Events, (381-8527)
Larry Meindorf Secretary (676-3076)	Jerry Harte Volunteers (800-562-5779)
Dick Baker Junior Golf Liaison, (487-9474)	Terry Kildca Membership
Steve Mcleod Competition Consultant and Golf Course Architect	Dave Seehase Advertising and Promotions

**Contact the Board**

Visit us online at  
[WWW.GLAGA.ORG](http://WWW.GLAGA.ORG)

**SLICE**

Our 160 store buying power lets us cut you the best deals on the products you really want.

**SHANK**

With our high selection and expert club fitting you'll hit a solid shot every time!

WHIFF

**PRO GOLF**

Since 1965

2088 W. GRAND RIVER  
OKEMOS, MI  
349-8750

**6119 W. SAGINAW**  
LANSING, MI  
321-7568

Lowest Price on Brand Names!  
"Try Before You Buy"  
160 Store Buying Power  
Free Custom Club Fitting  
Fit and Advice From Pros  
SATISFACTION GUARANTEED

America's Favorite Golf Store