

# 3108 UNIVERSITY BOULEVARD

## *Luxury student housing for women.*

Open to Upper Division Women (Junior/Seniors) enrolled at Southern Methodist University.

**Built in 2016, 3108 University Boulevard is four-story, 29,000 square foot facility built to house 40 women, conveniently located across from the SMU campus.**

- On the corner of University Boulevard & Airline Road
- Near the Dedman Life Sciences Building
- Walk or bike to class.
- Nearby university-controlled parking available



### **Fully Furnished Study Suite Rooms:**

Room suites are double occupancy. Each room is individually heated and cooled by its own self-contained unit with separate controller.

- Typical square footage per room is 500 square feet
- Each room is furnished with:
  - 2 desks and desk chairs
  - 2 dressers
  - 2 twin XL Beds with storage drawers
  - windows with plantation shutters
  - spacious closets

### **Community design**

- Community floor bathrooms
- Community “Mini-Kitchen” on main floor with refrigerator, freezer, toaster, microwave, and ice machine.

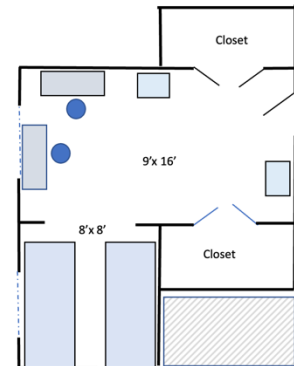
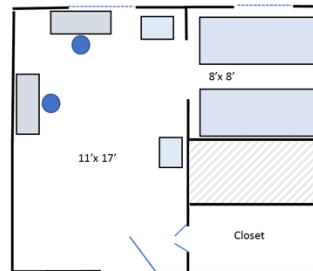
### **An Academic-oriented environment**

- Multiple study rooms
- Community study areas

*Sample floor plan measurements are approximate.  
Each room varies slightly in size and layout.*

### **Worry-free features**

- On-site management
- No additional utility fees.
- Free on-site washer/dryer
- Card-controlled access
- Housekeeping for common areas
- Wired and wireless internet
- Fire and Security monitored by SMU Police



### **Facility Facts**

- **Facility capacity** 40 live-in students
- **Year built** 2016
- **Physical address** 3108 University Boulevard
- **Room types** Double occupancy

### **Fees**

Double Occupancy room: \$6,750 per semester = \$13,500 each academic year

Single Occupancy room: \$10,000 per semester = \$20,000 each academic year (*Limited availability*)

Annual deposit: \$1,100 (\$1000 security deposit + \$100 Resident fee)

One term room rental is available. Facility managed by the Facility Corporation of Beta Sigma.

Residents are required have a meal plan through SMU or their panhellenic house.

**For more information or to apply for housing, email us: [3108UnivBlvd@gmail.com](mailto:3108UnivBlvd@gmail.com)**

**or find us at [3108UnivBlvd.com](http://3108UnivBlvd.com)**



# 3108 UNIVERSITY BOULEVARD



*Photos courtesy of Chambers Interiors*