

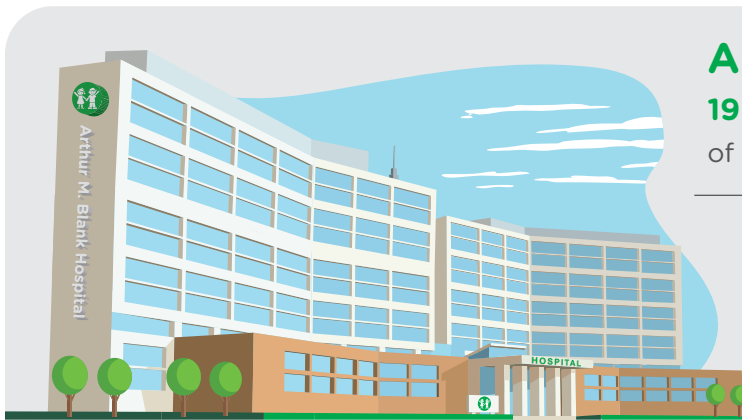
# Why does Children's NEVER SETTLE?



Children's<sup>SM</sup>  
Healthcare of Atlanta  
Foundation

At Children's, we are driven by the pursuit of health and hope for all children. We've been a trusted resource for Georgia families for more than 100 years, and we're consistently recognized as one of the nation's best children's hospitals. Managing more than 1 million patient visits each year, we are one of the largest pediatric clinical care providers in the U.S., and many of our specialty programs—including cancer, orthopedics and neurosciences—rank among the best in the country. As we build Arthur M. Blank Hospital at the heart of our growing North Druid Hills campus, we are on the front line of the next great transformation in pediatric care.

## We are dreaming bigger to create healing spaces for the children of metro Atlanta, Georgia and the Southeast.

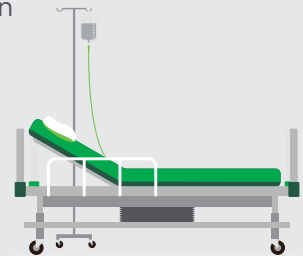


### Arthur M. Blank Hospital:

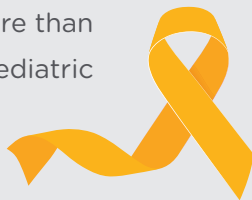
**19 stories**, more than **1.5 million square feet** of hospital space

A campus of more than  
**70 acres**

**35% more beds**  
overall, with room  
to grow



**20%** of patient rooms devoted to the **Aflac Cancer and Blood Disorders Center** to meet the more than **6%** rise seen in new pediatric cases in the last 3 years over previous years

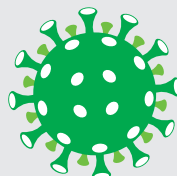
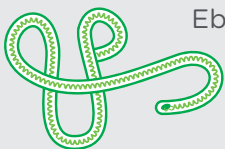


**25%** more  
**pediatric cardiac beds**



**3** specially designed  
**cardiovascular operating rooms**

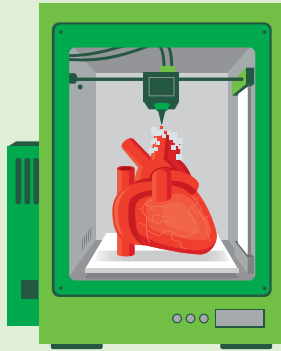
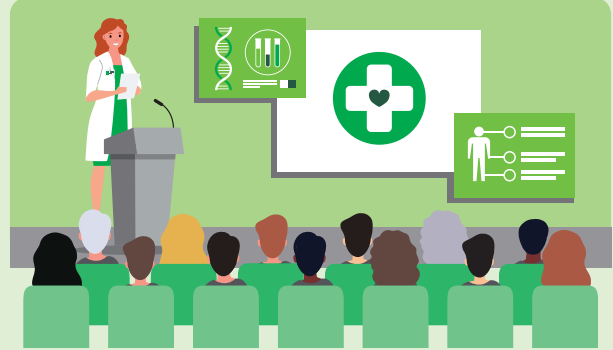
A **Special Care Unit (SCU)** for treating patients with highly infectious diseases like Ebola and COVID-19



**75%** of  
**patient rooms** have **garden views**, which may decrease pain, reduce stress and lower blood pressure

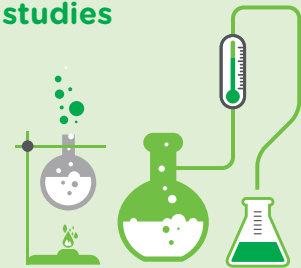
# We are building capacity to provide specialty care in a high-tech environment dedicated to clinical research, training and innovation.

Developing the **next generation of pediatric caregivers:** teaching and training more than **600 fellows and residents each year**



Utilizing **3D printing** to help create **lifesaving treatment options**

**Increasing accessibility to clinical research studies and trials:** giving patients access to investigational drugs, procedures and devices



Using **innovative technology in treatments:** spinal navigation, advanced wearable technology, and biomechanical research data capture to help develop **better prosthetics**



**Cell therapy labs** dedicated to providing some of the **most advanced care and treatments**



A **behavioral and mental health plan** to help the **1.5 million children** in metro Atlanta flourish and thrive

**20+** acres of lush green space to promote **wellness and healing**

A **“campus in the forest”** with approximately **1,200 new trees** being planted on the hospital site

