

Cedar Lake Conservation Club

Maple Lake – Annandale, MN

July 2016

President's Letter by Bill Arendt

wfa12345@aol.com | 320-274-2422

Wow, how time flies by. My term as President is coming to an end. As I reflect on the past several years, I always ask myself: "Why does CLCC stand out as a great lake association?"

- ◇ **Water clarity efforts**
- ◇ **Walleye stocking**
- ◇ **AIS control efforts**
- ◇ **Social opportunities**
- ◇ **Lake communications: newsletters, e-mail blast and website**

all come together to create a vibrant and caring lake community. The "behind the scenes" efforts may go unnoticed to many who enjoy the lake, but I am so grateful for all who volunteer. A heart felt "Thank You".

What a great summer for enjoyment on the lake. With the exception of a couple of spectacular storms, the weather has been good and many people have been taking advantage of the lake. About 250 people en-

joyed the annual picnic and many came to music on the water. Thanks to all who donated raffle gifts at the picnic, which helps offset the cost of the picnic.

Our annual meeting is on Saturday, September 10th, at the Corinna Town Hall. There will be nominations for the new Board members and a summary of 2016 lake activities, as well as **FREE** testing of private well water for nitrate starting at 8:30. See page 2 for more details.

Hope to see you at the annual meeting.

Bill Arendt

In This Issue:

- CLCC Annual Meeting pg 2
- Fishing Contest | pg 2
- CRWD Tour | pg 3
- AIS Decon Station | pg 3
- AIS Treatment | pg 4
- July 4th Pictures | pg 5
- Fish & Wildlife on Cedar | pg 7
- Support local businesses who support CLCC (see ads inside)

Stay abreast of breaking news - visit www.cedarlakecc.org for the latest updates.

Do you enjoy reading about the activities on the lake? This publication is sent to every Cedar Lake property owner. If you don't belong to CLCC, please consider joining to support this newsletter and other CLCC activities.



CLCC President Bill Arendt
Relaxing at sunset on beautiful Cedar

CLCC Annual Member Meeting

FREE Nitrate testing of your well water!

Saturday, September 10th, 2016

See page 2 for the details! Don't miss out!



CLCC Music (and dancing) on the Water (see more on page 6)

CLCC Annual Meeting

Saturday, September 10th, 2016

FREE Nitrate testing for your well water

WELL, WHAT'S IN YOUR WATER?

Instant Results!



Just bring a 1 cup sample!



Wright County SWCD

Not all Minnesotans know the quality of the water they drink. All of us on Cedar own a private well and it is up to each of us to test our water quality. Routine testing can prevent serious health problems. One of the compounds the Minnesota Department of Health recommends testing for on a regular basis is nitrate, which is dangerous for infants and pregnant women. Concentrations over 10 parts per million can cause birth defects and even death of infants. Nitrate comes from fertilizers, animal waste, and septic systems.

Getting your well tested is easy!! The Wright Soil and Water Conservation District (SWCD) is offering FREE nitrate testing at the Cedar Lake Conservation Club Annual Meeting. Bring a 1 cup sample from your well for onsite results. For best results run the tap for 2-5 minutes prior to collecting the sample in a clean plastic/glass container or Ziploc bag. If possible keep your sample cool until testing. Feel free to bring more than one sample if your neighbor can't make the meeting. Hope to see you there!

CLCC Annual Meeting
September 10th, 2016
Corinna Township Hall
9801 Ireland Ave NW

8:30 to 9:15 FREE Nitrate well water testing

Bring a cup of your well water and get an instant read on the nitrate level. Enjoy coffee/treats and a chance to visit with lake neighbors before the winter.

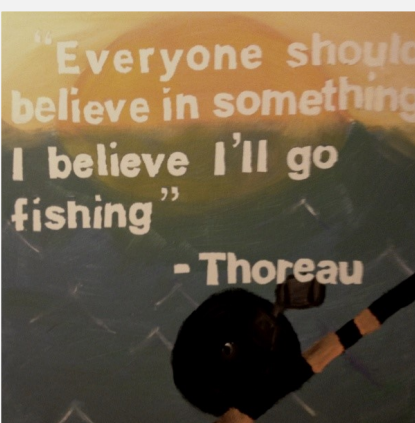
9:15 to 10:00 Member Annual Meeting

Update on CLCC activities, election of three directors, announce fishing contest winners.

10:15 to 12:00 Board of Directors Meeting

As always, all are invited to attend.

CLCC Fishing Contest | Get your line wet!



There is about one more month for our fishing contest. Winners will be announced and get their cash prizes at the September 10th CLCC Annual Meeting (see more details above).

Here's the scoop:

- ◇ Contest runs until September 1st, 2016.
- ◇ Bring your lunker for **weigh-in at Nicholson's 8879 Iresfled 320-274-3516 (Near Schroeder Park)**
- ◇ Usual prize categories are for



2015 1st Place Bass 4.48 pound
Adam Badger

walleye, bass, northern pike, crappie, and sunfish—but judges are impressed by all the fish in our lake.

All ages encouraged to join the fun!

Clearwater River Watershed District (CRWD) Tour

Saturday, August 20th, 2016

Cedar Lake is part of the Clearwater River Watershed District. The District's mission is to promote, preserve and protect water resources to maintain property values and quality of life. The CRWD is a local unit of government. Cedar Lake has a deep history and partnership with CRWD and has two active projects to improve water quality and control aquatic invasive species. Kathy Jonsrud, from Cedar Lake, serves as a Manager and Treasurer for the District.



The District has many water quality improvement projects and this summer's tour will highlight several in the upper watershed.

Though the Cedar projects will not be part of this year's tour, this is certainly a morning well spent to learn more about water quality projects in our district.

Call in your RSVP (CRWD 320-274-3935) today!

CRWD Summer Tour
August 20th, 2016 9am to Noon
Willow Creek Park Pavilion
240 State Hwy 15 Kimball, MN
***RSVP by August 5th* CRWD Office 320-274-3935**



- ◇ No charge to attend.
- ◇ Enjoy a hearty breakfast and learn about CRWD projects.
- ◇ Bus tour of several projects in the upper portion of the watershed.

FREE Aquatic Invasive Species Decontamination Service

Annandale 7 days a week 10am to 7pm

Has your water craft been to a different lake? Are friends and family bringing their boat or jet ski to Cedar? Are you planning on purchasing used water equipment (especially docks or lifts)?

If the answer is yes, be sure to take advantage of the FREE AIS decontamination service available in Annandale. The service is a cooperative effort between Wright Soil and Water (AIS Prevention funding) and Bishop AIS Services.

Don't Risk It

**Annandale AIS
 Decontamination Sign
 Look for it on HWY 55!**



WHERE: Anchor Dock and Lift Storage Facility, 240 Popular Ave, Annandale (just south of 55 behind Classic Rides and Rods) Watch for the bright lime green signs!

WHEN: Seven days a week, 10am to 7pm

HOW LONG DOES IT TAKE?: Smaller boats take about 10 minutes, larger vessels 20-30 minutes.



**STOP INVASIVE SPECIES
 IN YOUR TRACKS.**

PlayCleanGo.org



Water Quality Committee

by Kathy Jonsrud kjonsrud@yahoo.com | 320-274-2166

Zebra Mussel Infested Boat Stopped From Entering Cedar

On Saturday, July 16th, 2016 Katie Wolf (daughter of Sue and RJ Wolf who own a place on Cedar) stopped a zebra mussel infested boat from entering Cedar Lake at the DNR County Road 6 access. Katie is a member of the Bishop AIS Services team who provide access monitoring to reduce the spread of aquatic invasive species on Wright County Lakes.

Katie was busy at the County Road 6 DNR access on Cedar that Saturday. It was a perfect afternoon and many were enjoying the great water on Cedar; it was the day of our annual picnic and Music on the Water. This is Katie's second year working as an access monitor, and when the fishing boat with zebra mussels on the propeller housing stopped to be inspected, her training went into action. "I saw the zebra mussels right away, and then I learned he had recently been on Minnetonka. The owner thought they were rocks," Katie shared. "Then when I showed him the tentacles and how they moved when I touched them, he believed me." The owner thought he was being compliant



Katie Wolf
Cedar Access Monitor

as his boat had been out of Minnetonka for five days and he had not been in Minnetonka very long.

Katie directed the boat to the Wright County Decontamination Station in Annandale. The owner was happy to oblige, used the free decontamination service, then launched at Cedar.

As you can imagine, the access monitoring work is not very glamorous--pick a combo platter of hot, cold, rain, or wind.

We are so grateful for Katie's work and care for Cedar, and for the service provided by Bishop AIS Services and Wright Soil and Water Conservation District.



2016 Aquatic Invasive Species (AIS) Control Strategy

We once again had a successful year for aquatic invasive species control. We treated Curly Leaf Pondweed (CLP) and Eurasian Water Milfoil (EWM) this year.

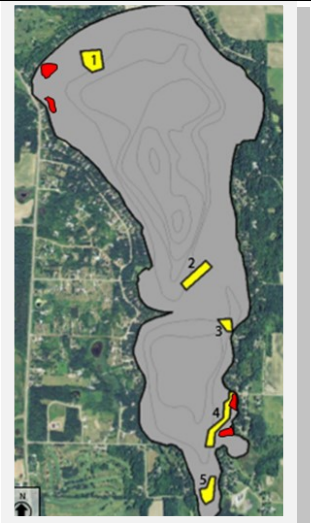
The CLP treatment was completed on May 5th and 8.8 acres were treated. The cost of the 2016 CLP treatment and mapping* is expected to be \$6,259. We did receive grants from the DNR and Wright County which brought the cost down to \$2,724, which is paid for by an assessment from the Clearwater River Watershed District (CRWD) through our PO6 project. Though the treatment was successful, our CLP mapping shows growth on the southeast and west sides which the Water Quality Committee will evaluate for treatment in 2017.

The EWM treatment this year was particularly effective. The treatment was completed on June 22nd and 20.3 acres were treated. We used a different chemical on area #1 (see yellow #1 to the right) and it seemed to knock down that stubborn area. The 2016 EWM treatment and mapping* is expected to be \$29,568. The DNR and Wright County grants brought the cost down to \$22,868, which is paid for by an assessment from the Clearwater River Watershed District (CRWD) through our AIS Control project.

The AIS treatments, mappings, delineations, and grant applications are managed by the CLCC Water Quality Committee. The Committee works very hard all year long to evaluate and plan for the most cost effective and lake-friendly treatments. Numerous governmental and vendor relationships are skillfully managed. **A special thanks this year to Mike Hankee for his many hours of oversight and leadership to manage the AIS on Cedar Lake.**

*Point-intercept mappings and delineations to be completed early fall

2016 AIS Treatment
Red Areas | CLP 8.8 acres
Yellow Areas | EWM 20.3 acres



Zebra Mussel Prevention On Cedar
by Glenn Baird glennabaird@gmail.com | 612-599-6439

Clearly, the threat of zebra mussels is close to home. Three lakes in Wright County are now known to be infected: Clearwater, Lake John, and Lake Sylvia. As of this writing, we have not detected an infestation on Cedar. We continue with our monitoring program with over 30 individuals watching for the critters and we are part of a microscopic examination of monitoring units offered by Wright County

When you take your docks and lifts out this fall, carefully inspect for zebra mussels. They are fond of the tubular structures.

Coalition of Lake Associations. We will also have a professional dive and examination this fall to help understand if we have an infestation.

PLEASE take a few extra minutes when you take out your docks and lifts this fall to look for zebra mussels. They like the tubular structures and like to hide in nooks and corners.

July 4th Parade on Cedar

Best Dock | Scott and Chris (Cook) Nelson



Tradition is a big part of the anchor for our lives. Cedar Lake provides those traditions and one that we share as a community is the July 4th parade. Many decorated their shore, dock or watercraft and joined to celebrate the birthday of our great county.

Most Patriotic | Gangroth



Most Creative | Bakken



Most Enthusiastic | Wold



Start planning for next year as the competition is fierce to win!



FUN FOR ALL



Shoreline Tour and Native Plant Sale | July 23rd 2016

Though Mother Nature provided biblical rains, we had a hearty and enthusiastic crew for the Shoreline Tour and Native Plant Sale. We toured restored shorelines on Cedar with informational presentations from the owners and Natural Shore representatives. We saw mature and newly planted restorations, learned about grasses and flowers that filter and provide great beauty, and shared stories and experiences. **A special thanks to Christa Lane-Larsen for hosting and serving delightful lunch.** We visited the following dazzling restored shorelines:

- ◇ Christa Lane-Larsen (2 restorations) mature and just planted
- ◇ Kathy Motzko Fisher (mature restoration and a beautiful monarch butterfly visited while we were there)
- ◇ David and Patty Glass (mature and sub-mature restoration).

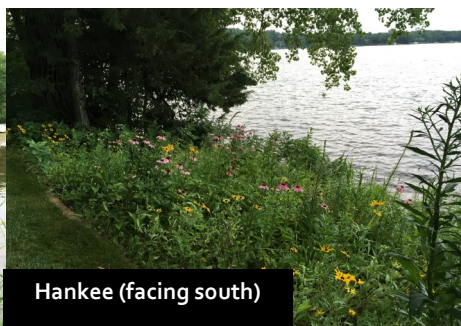
Dennis and Cheryl Wold were also on the list to see their mature shady restored shoreline and butterfly garden, but the thunder boomed and the skies opened up, so we took cover at Christa's home for lunch and fellowship.



Lane-Larsen 2nd lot restoration
New this year



Motzko/Fisher mature restoration
(coconut logs on shore)



Hankee (facing south)



Glass (facing west)



Restore
Amaze
Inspire
Smile!

www.naturashore.com

This year's Picnic and Music on the Water July 16, 2016

Celebrating our Lake and Community

PICNIC



Full house for lunch



Bouncy-house fun

RAFFLE PRIZES



Lots of lake information



The PERFECT raffle prize



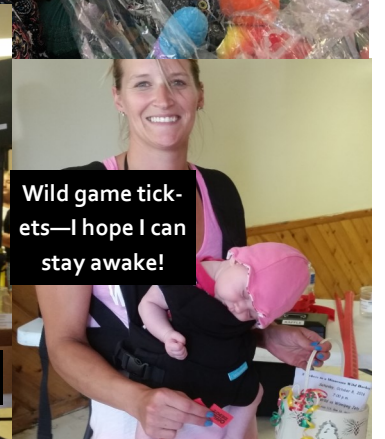
We've always wanted one of these!



I'm going golfing!



Don't say we never win anything!



Wild game tickets—I hope I can stay awake!

LIVE MUSIC ON THE WATER



FISH AND WILDLIFE COMMITTEE

by Paul Schutte pschutte54@hotmail.com | 612-968-3034



Jerry O'Keefe caught this beautiful 29" walleye on Cedar 7-2-2016

Walleye Fund Blasts

Stretch Goal

CLCC stocks walleyes on Cedar every other year. Our stretch goal this year was to raise \$6,000. At the picnic the Walleye Raffle was smoking hot and the fund is now over \$7,600. It looks like we will be able to stock over 7,000 fingerlings this fall because of your generosity! You can add more to the fund by using the form on page 16 or donating on-line at www.cedarlakeecc.org (Visionary Donate button on left)

Purple Martins

The purple martins on the lake have done very well again this

year. Last year was a great year but it appears that this year was even better. Thanks to the landlords that have given their

time and dedication to maintain a colony at their site. As you tour the lake I am sure you have heard or seen them as they feed on insects and drink from the lake all while in flight. Tony Lau, a bird bander and a member of the Minnesota Purple Martin Group, banded 76 young martins at Schroeder Park in early July to help us to continue learning about them. By mid-August, purple martins will gather at a roost, which will consist of thousands of martins, as they begin their journey to South America for the winter.

Loon Nesting | 3 Successful Families This Year

Wow, what a year we are having with our loons. The pair on the sand bar used our floating nesting platform and produced two chicks. The pair on the south end of the lake produced one chick on natural vegetation. The pair in the bay of Camp Courage, on our floating platform, produced one chick. These chicks can be very fragile during their early stages in their life. Everything from predators to irresponsible boaters can cause fatalities to these chicks. Every year we remind all to stay your distance from them and most are very mindful. Slow down, keep a comfortable distance, observe, and enjoy.

Consider Creating Rain Gardens

by Dawn Cole dsc6973@gmail.com | 320-274-1956 Cedar Lake Resident and Wright County Master Gardner Intern

Cedar Lake residents value the lake's excellent water quality, and work hard to preserve and improve it. Our recent Shoreline Restoration Tour is a great example of promoting practices that decrease erosion, improve water quality and add natural beauty to our shorelines.

Rain gardens are another way to add beauty to our properties while decreasing dangerous surface water runoff that ultimately makes its way into the lake.

We all understand erosion. Nobody likes the gullies and ruts we experience after a big downpour. But erosion that we can see isn't the only problem. Rainwater, instead of pausing long enough to soak into the ground, careens over the surface of roads, roofs, driveways, patios, lawns and slopes – right into the lake!

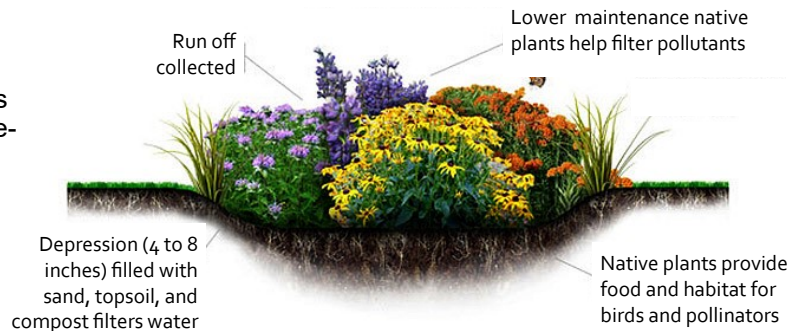
What's in this water? Soil (sediment), leaves, grass clippings, lawn fertilizer, oil, animal (or human) feces and chemicals. The result is more lake weeds, algae, muck, bacteria....and fewer fish!

Rain gardens are creative plant groupings you can do in your own yards to catch the water from your downspouts, driveway or lawn. Simply put, a rain garden is a *slightly depressed* garden of *native plants* where rainwater can pause and *soak into* the ground instead of running off.

Characteristics:

- ◇ Typically 4-8 inches deep.
- ◇ Ranges from 100-300 square feet, any shape.
- ◇ Rule of thumb: a rain garden should be roughly 1/3 the size of what is draining into it (a roof, yard or driveway).
- ◇ Soil should be porous enough to soak up water within less than 48 hours.
- ◇ Placement: >10 feet from any building; >35 feet from septic drain fields; >50 feet from wells.
- ◇ Can be wild or formal looking, depending on preference.

What is a Rain Garden?



Benefits of a rain garden:

- ◇ Helps protect and restore water's natural ability to become groundwater.
- ◇ Helps trap pollutants in runoff.
- ◇ Can be used almost anywhere
- ◇ Native plants attract birds, butterflies and other pollinators.
- ◇ Adds beauty to your yard and the whole neighborhood.
- ◇ Uses no fertilizers and little or no pesticide.
- ◇ After established, needs no watering and very little maintenance.

Article Two (November CLCC Newsletter) will provide additional information on how to build a rain garden.

More information:

- ◇ *Blue Thumb Guide to Raingardens*, Rusty Schmidt, Dan Shaw, David Dodds, Waterdrop Innovations, LLC, 2007. Available from Amazon. Excellent resource.
- ◇ *Rain Gardens: Sustainable Landscaping for a Beautiful Yard and a Healthy World*, Lynn Steiner, Robert Domm, Voyageur Press, 2012.
- ◇ <http://clean-water.uwex.edu/pubs/pdf/rgmanual.pdf>



Remaining 2016 CLCC EVENTS MARK YOUR CALENDAR

Amazon smile Prime CLCC donations are easy

August 20th	Clearwater River Watershed District Tour	9am Brunch and Bus Tour Willow Creek Park, 240 State Highway 15, Kimball, MN
September 1 st	Fishing Contest Ends Winners Announced at Annual Member Meeting Sept 10th	Weigh your fish with Dean and Kathy Nicholson 8979 Iresfeld 320-274-3516
September 10 th	Annual Member Meeting and Board of Director's Meeting	All welcome! Starts at 8:30am with Free Nitrate Well Water Testing Coffee and Treats! Corinna Town Hall 9801 Ireland Ave NW
November 12 th	Board of Director's Meeting	All welcome! 9am Corinna Town Hall 9801 Ireland Ave NW

Are you a member of Amazon Prime? If so, you can have Amazon donate 0.5% of your purchases to CLCC. Log on to www.smileamazon.com and use your regular Amazon Prime log-on.



You will be asked to select a charity; Cedar Lake Conservation is a 501(c)(3) and on the drop down. Same prices, same website, same account (shopping cart, wish list, registry, etc.) and Amazon makes a donation!

Of course, you can choose any listed charity, but hopefully you will pick CLCC!

LOST AND FOUND

**DID you lose some lake equipment after the storms?
DID you find some lake equipment after the storms?**

Contact Bill Arendt (CLCC President) 320-274-2422
and he will help to arrange for the items to find their way home.

Get To Know The CLCC Board and Officers

	Start	End	E-Mail	Telephone
Cathi Gabriel-Westman	Aug 2012	Sept 2016	cgwlawoffice@gmail.com	651-253-2675
Diane Salls	Sept 2012	Sept 2016	dsalls40@yahoo.com	952-857-9114
Bobby Ebert	Sept 2012	Sept 2016	bobby.ebert@fortunefin.com	651-278-2257
Glenn Baird	Sept 2013	Sept 2017	glennabaird@gmail.com	612-599-4639
Orv Jonsrud	Sept 2013	Sept 2017	ojonsrud@yahoo.com	320-274-2166
Bill Arendt (President)	Sept 2013	Sept 2017	wfa12345@aol.com	320-274-2422
Christa Lane-Larsen (Secretary)	Sept 2014	Sept 2018	clanelarsen@gmail.com	612-940-1080
Julie Grimme	Sept 2014	Sept 2018	jul9hi@aol.com	612-805-0081
Chris Nelson	Sept 2014	Sept 2018	cnelson@foam-industries.com	763-742-2742
Karl Leslie	Sept 2014	Sept 2018	karl.leslie@wolterskluwer.com	320-274-3077
Karen Lohn	Sept 2015	Sept 2019	karenlohn@boreal.org	320-274-2858
Kathy Miron (Vice President)	Sept 2015	Sept 2019	miron72@comcast.net	763-688-0705
Liz Baird* (Treasurer)	Sept 2012	Sept 2016	lizbaird22@gmail.com	612-599-4128

*Non board member

Cedar Lake Merchandise is Available

We will be at all Cedar Lake Conservation Club events with t-shirts, towels, sweatshirts, and denim shirts in a range of sizes and colors. We also have towels and fleece throw blankets. If you know you would like an item in a specific size and color please contact
Julie Grimme jul9hi@aol.com or 612-805-0081.



Support Those Who Support CLCC

WEAR CEDAR LAKE

close to your heart.



Sterling Silver, White & Yellow Gold
Customize with a Diamond

the original
LAKE PENDANT

Miller's Jewelry

Find us on



MAIN STREET, ANNANDALE 274-5313

Let Us Exceed Your Expectations!

**ANCHOR
DOCK & LIFT**

www.anchor-dock.com

World Class Products, Exceptional Service

DOCKS | LIFTS | RECREATION | RENTAL

960 Elm Street E, Hwy 55 | Annandale (320) 274-6500

*Your Mother-Daughter Team in
the Heart of the Lakes Area*

Marci Segner
320-266-1084
msegner@remax.net

Joy Carlson
320-266-1086
joycarlson@remax.net
joyandmarcihomes.com

RE/MAX
FROSTEN

*Mention you saw their ad in our
newsletter and thank them!*

Cottage Gourmets
food for the events in your life

Barbara Westman
Website: cottagegourmets.com
Phone: 320-493-0416
barb.westman@gmail.com

Support Those Who Support CLCC




Lakeshore, Residential
& Land Specialist

Jim Splinter
REALTOR®

Cell: 320-980-0560
Fax: 763-682-6922

www.jimsplinter.edinarealty.com
jimsplinter@edinarealty.com




MARVIN
Windows and Doors
Built around you.™

WINDOWS AND DOORS WITH THE POWER TO TRANSFORM

Marvin® Windows and Doors is a world leader in providing products with the ability to transform projects into truly unique living spaces. When choosing the right windows and doors for your project, count on your local Marvin® experts, Maple Lake Lumber Co., for the perfect solution.

320-963-3612
www.maplelakelumber.com
120 Oak Ave S.
Maple Lake, MN 55358

MAPLE LAKE LUMBER CO.



DESIGN / PRINT / MARKETING

Helping to make clients look GREAT since 1994

Scan to visit



our site now

309 12th Ave S | Buffalo, MN 55313
763.682.3750 | www.IntegriPrint.com



J&J MARINE
WE ROCK THE BOAT!

14882 State Hwy. 55, South Haven, MN 55382

ALUMACRAFT
Godfrey
YAMAHA GENERATORS
PORTA-DOCK

SALES - SERVICE PARTS - ACCESSORIES

YAMAHA **MERCURY**
EVINRUDE **SUZUKI MARINE**

320-236-3625
www.jjmarineinc.com

Mention you saw their ad in our newsletter and thank them!

Support Those Who Support CLCC

We know the Annandale Lakes Area Real Estate Market



If you're looking to buy or sell a lake home or cabin, give us a call today!



Annandale • RemaxGo.com • 320-274-2233



LAKE CENTRAL
INSURANCE SERVICES
INVESTMENTS

Securities and Insurance offered through Centa Investment Services, LLC, member FINRA/SIPC. Investments are not FDIC Insured-Not a Deposit-Not Insured by any Federal Government Agency-May Lose Value-Not Financial Institution Guaranteed.

Auto	IRAs
Home	401Ks
Life / Health	Mutual Funds
Business	

www.mylakecentral.com

Maple Lake 320-963-3163 Annandale 320-274-8216 Clearwater 320-558-2480

Mention you saw their ad in our newsletter and thank them!

Maple Lake Area:
400 State Hwy 55 NW
Maple Lake, MN 55358
Ph: 320.963.2178

Metro Area:
4700 Osseo Rd
Minneapolis, MN 55430
Ph: 612.588.4000



Lawn Sprinkler Design, Installation and Service
www.carefreelawnmn.com
info@carefreesprinklers.com

WE CREATE **Outdoor DREAMS**



Meet with one of our Landscaping Experts to create a plan that will transform your outdoor space from simply functional to Truly Exceptional!

Backyard Reflections, Inc.
We Create Outdoor Dreams

320-274-6336
www.backyardmn.com

Lake Property Landscaping Specialist

CLCC MEMBERSHIP COMMITTEE

By Kathy Miron, CLCC Vice-President miron72@comcast.net | 763-688-0705

Have You Paid Your 2016 Dues?

Membership this year is right on track to reach over 80% of our lake residents belonging to CLCC. We also have several paid "Friends of Cedar Lake" memberships. Most lake associations are delighted to reach 50% membership, so we certainly have a strong showing on Cedar. We need your support to maintain the CLCC as a vibrant lake association.

Dues are \$25 per calendar year and many "give a bit more" as a Visionary of Cedar Lake. **We do not send out individual bills; we rely on this newsletter as the reminder.** You can use the form on the back of this newsletter, or pay on-line at www.cedarlakeecc.org.

Please take a moment right now to pay your dues before it slips your mind. Your lake counts on it!

TWO EASY WAYS

TO PAY DUES



Fill out the dues form on the last page of this newsletter and mail in



On-line payment at www.cedarlakeecc.org
(see link on left hand side)

Newsletter and Website Services

The CLCC newsletter is published three times a year (April, July & November). A copy is also posted on our website for future reference. Kathy Jonsrud is the editor of the newsletter, which is one of the best lake association newsletters in the Wright County area. Mark Trostad is in charge of the website and e-mail notifications. We can support up to two emails per family. Updates to emails (and other directory information) should be sent to Liz Baird, lizbaird22@gmail.com. Thanks Kathy, Liz, and Mark for your efforts.

CLCC Treasurer's Report

Fund Balances at 7/23/2016

<u>FUNDS</u>	<u>AMOUNT</u>
Water Quality	\$37,268.64
Walleye Stocking	\$7,653.19
General CLCC	\$5,002.77
Dave Larsen Visionary	<u>\$2,905.44</u>
TOTAL	\$52,830.04

Thanks to Liz Baird — Treasurer of CLCC. Accurate and timely financial recordings are critical to maintain the trust and confidence of members. An outside financial review is performed every two years (being done this year) to ensure that funds and transactions are accurate.

Where on Cedar?



All lake people enjoy photographs of the beauty and fun we share on the lake. Think you know the lake well? Can you figure out where this photo was taken from? (answer on

page 15). We would love to have your favorite electronic photo of Cedar. Send to Kathy Jonsrud, CLCC Newsletter Editor kjonsrud@yahoo.com

Support Those Who Support CLCC

We Are Seriously Local

Marketing Cedar Lake for over 40 years,
stop by and pick up a map!



Annandale Office 720 Elm St. E (320) 274.5737
Maple Lake Office 501 Maple Ave. N (320) 963.2088
www.oakrealtymn.com

Find us on:

Coffee ~ Wine Bar ~ Beer

cafe Jules

NEW
Bistro!

Food &
Friends



20 Cedar Street E
Annandale, MN
Located next
to City Hall
320.274.7477



320-274-GIFT

FINE GIFTS & GREAT FINDS

Jim King, Owner
atg@lakedalelink.net

10 Oak Ave N Annandale, MN 55302
www.allthingsgoodmn.com

ELIMINATE LAKE WEEDS



The WeedRoller PRO moves in a slow, broad arc, pivoting 300°. As its linked rollers rotate along the lake bottom, they detach existing weeds and agitate the lake bed. This prevents weed growth and allows for a clean, sandy lake bottom and a great swimming area.

CRARY
WeedRoller PRO

Lakeside Innovations WeedRoller
Your WeedRoller Experts!

612-222-2487

www.lakeweederoller.com

Dingmann
MARINE
AND **MORE** LLC

Service & Repair

320-274-8688

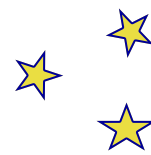
1100 Business Blvd.,
Annandale Business Park,
(off Hwy. 55 E)

- Winterization
- Storage • Service
- Boats, Motors,
Snowmobiles, ATVs,
Watercraft





CLCC VISIONARIES



Cedar Lake Visionary Fund

The Cedar Lake Visionary Fund is a great way to donate to the CLCC. CLCC is a 501(c)(3) tax exempt organization, so your donations are tax deductible. Our Visionary Fund was started in 2010 and has become an important cornerstone of making a difference on Cedar Lake. Our Visionary contributions for 2015 were over \$13,600—shattering all past records! .

**Add a bit more to
your dues and join
the Visionaries**

Your contribution will be directed to the fund of your choice: General, Walleye Stocking and Water Quality. Payments can be made either by check or very conveniently on-line. The CLCC website (www.cedarlakeecc.org) has a tab for donating electronically using Pay Pal. Please support this program by donating to the fund of your choice. For further information, contact Kathy Miron at 763-688-0705 or miron72@comcast.net

THANKS TO ALL WHO HAVE CONTRIBUTED!

Visionary Contributions Since November 2015 and Lifetime Visionary

SILVER (up to \$99)

Scott and Karen Anderson
Michael and Kelli Andreen
Jim and Marcia Behm
Brad and Mary Bakken*
Julie Croft and Doug Roderick
Dean and Carolyn Custer*
Doug and Jan Doerfler
Bruce and Julie Emerson*
Mitch and Desiree Flemming
Michael and Bonnie Haehn
James and Kelly Hansen
Michael and Becky Hess
Dennis and Nadine Jopp
Lavern and Phyllis Johnson*
Kathy Lampi*
Jeremy and Erin Macheel
Rod and Sheila Melgard
Bob and Joanne Milligan
Gerald O'Keefe
Jon and Linda Oxenford
John Puncchar*
Bruce and Sally Quam
Germaine Roser and Lynn Rehm
Jeff and Leanna Rivers
John and Bonnie Sadergaski
Keith and Sandra Sather
Glenn and Nancy Schultz*
Lance and Nicki Schumacher
Bill and Merrlyn Seefeldt
Daniel and Debra Skaar
Erick and Kristen Sorenson*
Rick and Peggy Suddendorf*
Steve and Debbie Tobako
Dennis and Cheryl Wold*
Wratkowski Family

GOLD (\$100 to \$499)

Glenn and Shirley Baillie*
Ron and Christy Bateman*
Mike and Dawn Cole*
Jim Domain*
Steve and Jayne DeGroot
Ron and Linda Dircks*
Greg and Char Duppler*
Ted and Sally Grangroth*
Ralph and Merry Beth Gay*
Jim and Diane Harrison*
Darren and Andrea Heairet*
Dan and Marnie Huss*
Bob and Lorraine Johnson*
Troy and Jennifer Johnson
Ed and Bonnie Kelly*
Jim and Lynne Kuhn*
Larry and Melanie Kraemer*
Leslie Kreutter*
Linda Lasere*
Don and Holly Linn*
Bob and Karen Lohn
Jim and Judy Martin*
Gary and Kathy Miron
Al and Paulette Nerheim*
Bob and Cheryl Norman*
Tony and Leanne Peters
John and Candace Randle
Claire Rood*
Diane Salls*
Ken Savik*
Ed and Jean Skomoroh*
Dennis Smaagard
Phil and Beth Trout*
Charles and Judy Vinar
Karen and Wendy Watson*
John and Kim Wernz*

PLATINUM (\$500 to \$999)

Chad and Jennifer Filek*
Steve and Becky Grabski*
Karl and Mary Leslie*
Bob and Debra Wagner*

LIFETIME (\$1,000 plus)

Bill Arendt & Mary Ellen Wells*
Glenn & Liz Baird*
Bruce & Cathy Campbell*
Arlan and Janet Daniel*
Dick & Mary Beth Ebert*
Mark and Julie Grimme*
Mike & Laurie Hankee*
Orv & Kathy Jonsrud*
Christa Lane-Larsen*
Terry & Christine Morse*
Scott and Chris Nelson*
Steve & Paula Ostrom*
Dave & Jan Usset*
Bill & Ruth Westhoff*
RJ and Sue Wolf*

** Indicates Sustaining Member with multiple contributions in that category. When donors reach a higher visionary category with multiple donations, they will be recognized in that higher category.*

Healthy Lakeshores

By Karen Lohn-CLCC Board of Directors and Christa Lane-Larsen CLCC Board of Directors and Secretary

Cedar Lake is wonderfully clear and beautiful these late July days. Much of this is to the credit of wise management of phosphorus, invasive species, and wildlife habitation. Appreciation is due to all who contribute to the challenging processes that are required to maintain a healthy lake. And, a reminder to all of us to consider the impact of our individual practices as inhabitants of cabins and homes surrounding this gem.

Though it may seem miniscule, each step we take around our yards and in the water does have an effect on the quality of Cedar Lake. Healthy shorelines reduce runoff, filter pollutants, and provide important habitat functions that benefit fish and wildlife. Studies have shown that the removal of natural vegetation near the shoreline reduces the amount of habitat available to songbirds and amphibians and reduces fish-nesting. Many of these problems could be prevented or minimized if an area of native plants is maintained or restored. Maintaining a healthy lake is far less costly than trying to fix a degraded one.

Since a lake is an entire ecosystem, each thing that we do affects other aspects. Two practices to ponder include the importing of sand to create private beaches and the use of pesticides to fight mosquitoes, rodents, and aquatic weeds.

Sand deposited and drifted along the shore and lake bottom can smother bottom-dwelling algae and invertebrates, and reduce the amount of shoreline habitat for fish. Because sand drifts in water, it clouds the water and prevents UV light from the natural process of disinfecting bacteria in the lake. There are requirements established by the DNR that limit the use of beach sand and other types of fill. Please refer to the DNR's website for complete, detailed information about beaches, but two of the most important points is that beach material must be clean and washed free of fine particles and must be of the appropriate grain size to stay in place under wave action. In addition, to minimize the risk of your beach migrating away from your shoreline, you need to maintain aquatic vegetation on both sides of your beach.

The DNR has a great tool called "Score Your Shore", (<http://www.dnr.state.mn.us/scoreyourshore/index.html>), which will help you determine the health of your shoreline.

None of us likes mosquitoes or other insects pestering us as we enjoy outdoor play during our brief summer. Many of us love a luxurious lawn on which to picnic, relax, or play. Insecticides sprayed to rid a yard of pests and fertilizers used to enrich a lawn eventually leave the target area by degradation, evaporation, leaching to ground water, and runoff. After a heavy rain, nitrates and pesticides increase dramatically in lakes near residential areas. Many of the chemicals are toxic to fish and other aquatic organisms. Keeping Cedar Lake clear, healthy, and beautiful is a goal toward which each of us can strive.

Continue to keep yourself educated about environmental issues affecting Cedar Lake, and do your part, so that it will continue to be a premier lake for generations to come.

CLCC Committees Where can you help?

The CLCC is a very active lake association, fostering fellowship among the lake residents while promoting and protecting the wildlife and natural beauty of Cedar Lake. No members, directors or officers receive any compensation. The success of CLCC depends on volunteer efforts, so please join in.

CLCC Committee	Chair	Contact Infor-
Water Quality Protect & improve water quality & beneficial vegetation	Kathy Jonsrud	kjonsrud@yahoo.com
Fish and Wildlife Conservation Preserve & protect beneficial wildlife, fish, & the natural beauty of Cedar Lake	Paul Schutte	pschutte54@hotmail.com
Membership and Quality Lake Life Encourage membership & involvement	Kathy Miron	miron72@comcast.net
Social Promote fellowship among lake residents & friends of Cedar Lake	Cathi Gabriel Westman	cglawoffice@gmail.com
Merchandising Select, manage & sell items that promote Cedar Lake	Julie Grimme	jul9hi@aol.com
Nominating Provide Board of Director nominations to the membership at the Annual Meeting	Carter Diers	carterdiers@yahoo.com

Kids Don't Float

As summer winds down, don't let your guard down when it comes to safety and life jackets.



CLCC sponsors a life jacket loaner station at Schroeder Park (north side of lake). Anyone using the lake who finds they don't have enough life jackets can borrow a life jacket at no cost and then return it to the station.

There are two different sizes of kids' jackets and several adult jackets.

Where on Cedar?

OK, the location of this fall splendor photo is an easy one! The photo on page 12 is looking east near the sandbar. The mirror like water and breathtaking sunset was captured by Laurie Hankee.

Cedar Lake Conservation Club
P.O.Box 192
Annandale, MN 55302


PRSR STD
US POSTAGE
PAID
BUFFALO, MN
PERMIT NO. 76

- In This Issue**
- CLCC Annual Meeting
pg 2
 - Fishing Contest | pg 2
 - CRWD Tour | pg 3
 - AIS Decon Station |pg 3
 - AIS Treatment | pg 4
 - July 4th Pictures | pg 5
 - Fish & Wildlife on Cedar | pg7
 - Support local businesses who support CLCC (see ads inside)

~~ Time to Pay 2016 Dues~~Consider “Adding a Bit More”~~

CLCC needs your support. Annual dues to CLCC are \$25, based on the calendar year, and can be paid by check with the form below or electronically on-line. Visit the CLCC website (www.cedarlakeecc.org) and click on the “Donate” tab under “Dues” and the “Donate” tab under “Visionary” to make your contributions.

CLCC is a 501(c)(3) tax-exempt organization, so dues and contributions are tax deductible.

	Dues Payment	\$25.00
	YES! I can give a bit more (circle desired fund) :	_____
	Walleye Stocking Fund Water Quality General	_____
	TOTAL:	_____
Name: _____		
Home Address: _____		
Lake Address: _____		
Preferred Phone: _____		
Email: _____ Additional Email _____		
<i>Please include this form if paying by check and make checks payable to: Cedar Lake Conservation Club or CLCC. Mail to: CLCC, PO Box 192, Annandale, MN 55302 Online dues payment is available at www.cedarlakeecc.org</i>		