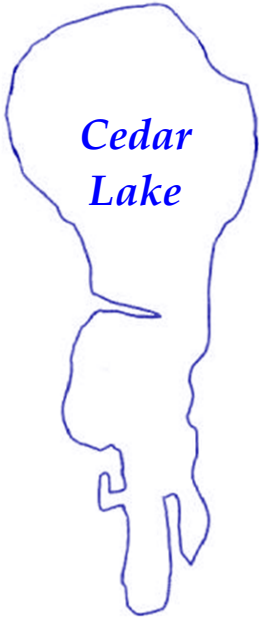




Cedar Lake Conservation Club

Maple Lake – Annandale, MN *Early Summer Special Edition* June 2016

CLCC Picnic and Music on the Water Saturday, July 16th, 2016



In This Issue:

- Annual Picnic and Music on the Water July 16th
- Shoreline Restoration Tour & Plant Sale | page 2
- Good Weed Bad Weed | Page 2
- FREE AIS Decontamination page 2
- AIS Update | Page 2
- July 4th Parade | Page 2



LOON ALERT!

We have loon families on the northeast, sandbar, and south-east side. Marvel and enjoy, but stay far away (at least 100 ft) and remind all guests to do the same. The new chicks are not able to dive till about the middle of July.

CLCC is continuing the tradition of a great day on the lake filled with family fun, camaraderie, music, and lake activities. The CLCC Social Committee, led by Cathi Gabriel Westman, has put together another relaxing and fun-filled afternoon for all ages. True Friends—Camp Courage has opened its lakefront facility again. From 12 noon until 1:30pm, Cottage Gourmets will serve a wonderful picnic lunch. Games, raffles, lots of entertainment, information on CLCC activities, and great Cedar Lake merchandise sales will fill the time quickly.

Then, everyone is invited to float on over to the sandbar, soak in the sun, and go dancing on the water. “Midnight Radio,” a popular local band, will perform on a barge until 6pm. This lakeside music fest is sponsored by Dingmann Marine and More.

Reservations are not required and guests are welcome.



CLCC Picnic and Music on the Water July 16th, 2016

12noon-1:30pm True Friends—Camp Courage

Member Appreciation Free Lunch
8046 83rd St NW, Maple Lake MN 55358
Lakeside Dining Hall

The entrance to Camp Courage is on County Rd 7; stay to the left to get to the Dining Hall. Sorry—no boat parking is available.

Cost for Lunch : Free for Members
Guests \$8 (kids 12 & under free)

2:00pm-6:00pm Cedar Lake Sandbar

“Midnight Radio” - Live Band Sponsored by Dingmann Marine; Bring Your Own Refreshments

*No reservations required
Guests are warmly welcome
Plan to relax, enjoy, and celebrate
our lake community*



Picnic Raffle Donations Needed

The raffles at our annual picnic always generate anticipation and fun. If you are willing to make a raffle donation, please contact Bill Arendt at wfa12345@aol.com or 320-274-2422.



Shoreline Restoration Tour and Native Plant Sale

Saturday, July 23rd, 2016 Back by Popular Demand

Shoreline Restoration Tour July 23rd, 2016 10am
8811 Ingram Ave, Annandale, MN
Hosted by Christa Lane-Larsen

Over the past several years, numerous property owners on Cedar Lake have been installing native shoreline buffers. The native shorelines are a huge win; they contribute to improved lake water quality, lower maintenance after established, reduce pesky geese, and are absolutely beautiful. A tour of projects around Cedar Lake will showcase a variety of terrains, stages of development and specialized conditions.



Native Plant Sale and Lunch July 23rd, 2016
About 12:00pm (After Shoreline Restoration Tour)
8811 Ingram Ave, Annandale, MN
Hosted by Christa Lane-Larsen

The shoreline tour will conclude at 8811 Ingram and there will be lunch and a plant sale. Thinking of adding some native plants to your property? Great - but many natives are not available at typical garden centers. Get quality native plants at a reasonable price from Natural Shoreline

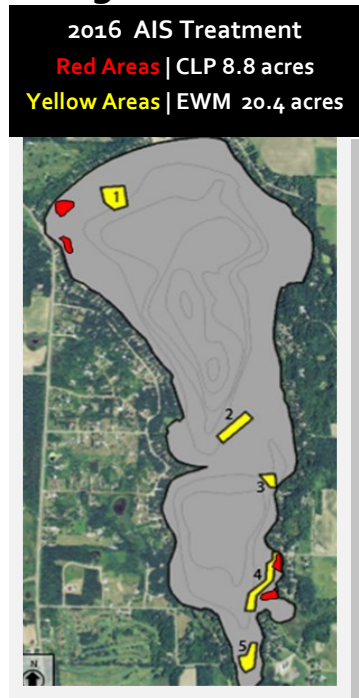


No charge to attend! If you are able to join us for lunch, please RSVP by July 16th to Christa Lane-Larsen | lanelarsen@gmail.com

Aquatic Invasive Species (AIS) Update

Plans are well in place to control AIS on our lake. Here's the bumper sticker of what is happening:

- ◇ **Treatment of 8.8 acres of Curly Leaf Pondweed (CLP) on May 5th,**
- ◇ **Treatment of 20.4 acres of Eurasian Water Milfoil (EWM) is planned for mid-June.** If the water within 150 feet of your property is treated, there is a sign posted on your shoreline. There are very few restrictions should your property be in the treatment area.
- ◇ **Manned AIS inspections** are happening on the CTY RD 6 landing, Schroeder Park, and new this year at Wurm's.
- ◇ **We have over 20 zebra mussel monitors** on our lake this year. All of us have skin in the game to keep Cedar "zebe free". Are you able to help monitor? Contact Glenn Baird glennabaird@gmail.com.
- ◇ Please remember to remind all your guests the importance of a clean and dry launch of their watercraft.



FREE AIS DECONTAMINATION STATION IN ANNANDALE

Offered through a collaboration between Wright Soil and Water Conservation District and Bishop AIS Services

Where: Anchor Dock and Lift Storage Facility (behind Classic Rides and Rods)
 240 Popular Ave (off of Hwy 55) Annandale, MN

When: 10am to 7pm | 7 days a week

Small boats take about 10 minutes; larger vessels 20-30 minutes

DON'T TAKE A CHANCE!

BE PART OF THE SOLUTION!

Good Weed or Bad Weed?



Included with this mailing is a page of common lake vegetation on Cedar. Many keep the information on the lake fridge or in their boat to help with identification.

Good Weed

Over 90% of the aquatic vegetation in our lake is a good weed—native vegetation. We have a wonderful assortment in our lake including the highly desired hard-stemmed rushes and lily pads. Our diverse native vegetation is a sign of a healthy lake with a balanced system to provide food and shelter for wildlife.



Bad Weed

Two aquatic invasive species—Curly Leaf Pondweed (CLP) and Eurasian Water Milfoil (EWM)—are in our lake. When cruising the lake, try to steer clear of the EWM areas and stay in 12 feet of water or deeper. **The newest bad weed in Minnesota is Starry Stonewort—discovered in Lake Koronis (just one hour west of Cedar) in 2015.**

If you wish to reduce some of the aquatic vegetation for recreation, please check the DNR Aquatic Plant regulations. Should you elect to cut or rake the aquatic vegetation, remove the vegetation so it doesn't end up on your neighbor's shoreline.

July 4th Parade 2pm | North side of sandbar

Start making your plans for the CLCC July 4th Parade. Categories of competition are: Most Patriotic, Most Enthusiastic, Most Creative, and Best Dock. There are great prizes for the winners. Bunch up on the north side of the sandbar a bit before 2pm and follow the lead boat.



2015 Best Dock | Jim and Lynne (Badger) Kuhn
 The kiss is courtesy of Kyle Badger and Sarah Grimm