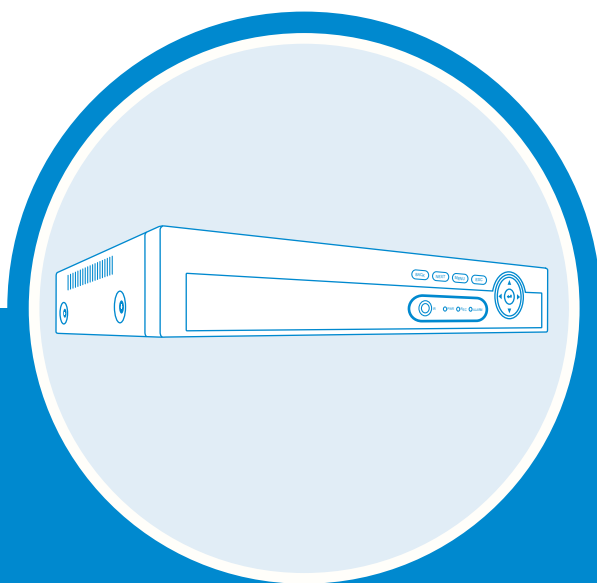


POE NVR

—— User Manual ——



Security Expert for Your Home and Business



XMEye Pro App



Table of Contents

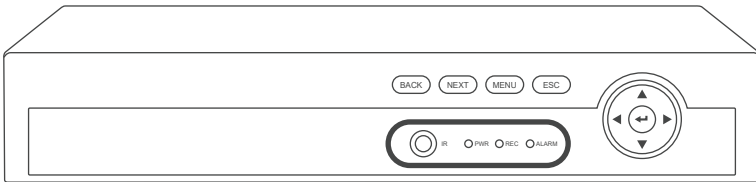
1. NVR Installation	04
1.1 Hard Disk Installation	04
1.2 Boot & Preview	04
2. Function Setting	05
2.1 Login System	05
2.2 HDD Setup	05
2.3 General	06
2.4 Record Setup	07
2.5 Video Playback	08
2.6 Video Backup	09
2.7 Snapshot Configuration	10
2.8 Network Setup	11
2.9 Check Nat Status	12
2.10 Email Setup	12
2.11 User Management	15
2.12 Audio Setting	16
2.13 Alarm	16
2.13.1 Intelligent Alert Setting	17
2.13.2 Advanced Setting of Human Detection/Face Detection	18
2.13.3 Advanced Settings of Vehicle Detection	20
2.13.4 Advanced Settings of Safe Zone & Line Cross Alarm	20
2.13.5 Abnormality Settings	22
2.13.6 Traditional Alarm Setting	23
3. Digital Channels Setup	24
4. Add IP Camera	25
5. Remote View	25
5.1 Remote View via Browser	26
5.2 Remote View via PC Software	27
5.3 Remote View via Phone App	28



Preface

Thanks for purchasing our PoE Network Video Recorder Surveillance products. This user manual is for 4CH/8CH/16CH PoE NVR and PoE cameras system. The firmware and software for the cameras and NVRs will be updated for better user experience. Please write to us or visit the store to get the latest user manual.

NVR Overview



Front of the NVR

IR: To receive infrared remote control signal.

PWR: It will be on when the NVR is plugged in power adapter (DC 48V~52V).

REC: It will be on when the NVR set up recording.

ALARM: It will be on when the NVR received alarm attention.

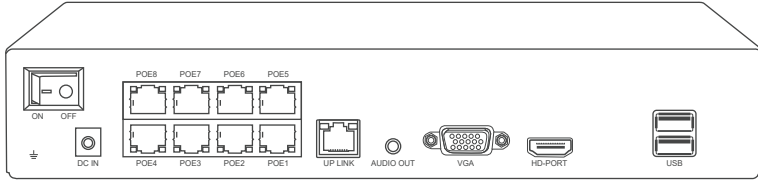
Directions: Choose different options on NVR, left or right, up or down.

BACK: Back to previous step.

NEXT: Go to next step.

MENU: Enter main menu directly.

ESC: Leave the current option/window, cancel or back to previous option.



Back of the NVR

Switch: Turn on/off NVR.

DC IN: For power supply DC 48~52V, the size of the DC plug is 5.5*2.1mm.

PoE 1-8: Ethernet ports for connecting the PoE Cameras.

UP LINK: Ethernet port for connecting to the router.

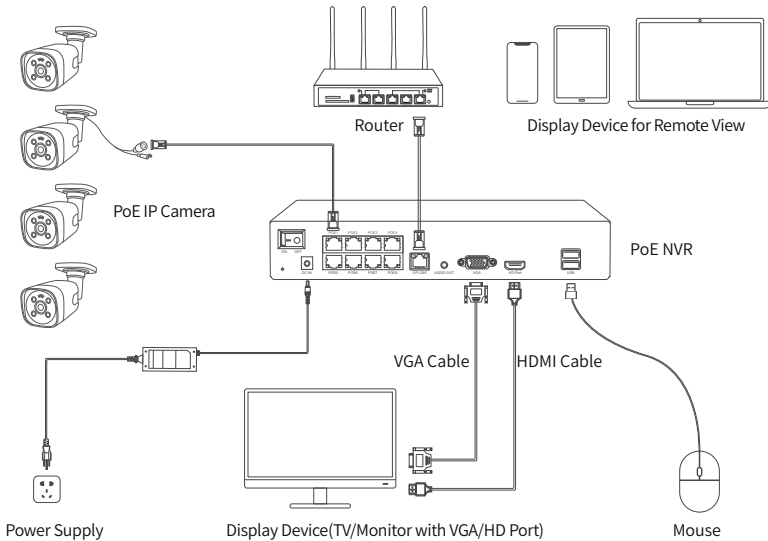
AUDIO OUT: For connecting speakers to play the recorded audio.

VGA: For connecting the monitor or display with VGA cable.

HD-PORT: For connecting the monitor or display with HDMI cable.

USB: For connecting USB mouse to control NVR or USB disk to backup video.

Wiring and Connection Diagram





After the wiring and connection as above, the live images should be shown on the monitor or display. Then you can install the cameras and do the wiring.

Cameras Installations

When you install the cameras, please make sure to avoid the inaccurate ways of installations.

Wrong Viewing Angles

Wrong Way: The wall will reflect the light from the IR lights to the lens at night if the camera lens are installed too close to the wall.

Right Way: Adjust the directions of the camera lens and make sure the lens of the camera are away from the wall.

Close Object Reflects

Wrong Way: There are objects too close to the camera lens. The object will reflect light from the IR light to the lens.

Right Way: Move the objects away from the camera lens or change the camera's installation position.

Close Wire Cable Reflects

Wrong Way: The wire cables of the camera, like power cable or Ethernet cable are too close to the camera lens. The cables will reflect light from IR light to the lens.

Right Way: Move the power cable or Ethernet cable away from the camera lens and fix it on the back of the camera.



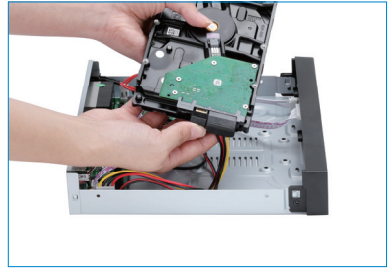
1 NVR Installation

1.1 Hard Disk Installation

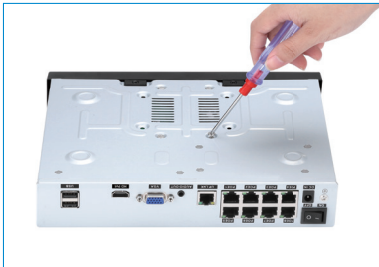
Please install the hard disk first. If not, the video recorder can only monitor normally, but cannot record or playback.



① Remove the case



② Plug in SATA cable



③ Screw HDD to the bottom



④ Install the case back

! Notice: Please choose a specialized monitoring hard drive disk in order to record for a longer time. The video recorder supports 3.5" or 2.5" SATA hard disk.

! Warning: please make sure the power is off before installation.

1.2 Boot & Preview

Make sure the power supply matches the requirements of the hard disk video recorder. After connecting the power, the indicator on the front of the NVR will light on and you



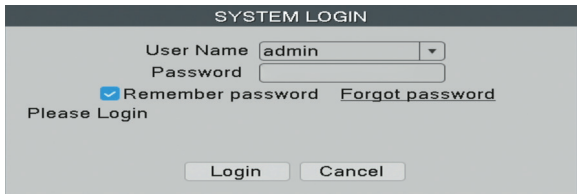
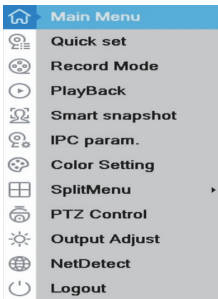
will hear a buzzer sound, then the display will boot up and the device will access to the preview image. After the recovery of the non-normal power failure, the device will automatically return to the state it was in before the power outage.

2 Function Setting

2.1 Login System

After the normal boot, you have to log in first and the system will provide the corresponding function according to the user's rights.

Right click the mouse → **【Main Menu】**

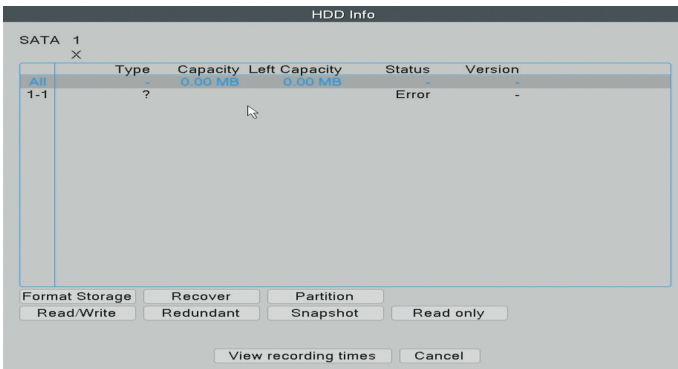


User name: admin (default)

Password: Just leave it blank as default.

2.2 HDD Setup

Right click the mouse → **【Main Menu】** → **【Advanced】** → **【HDD Info】**



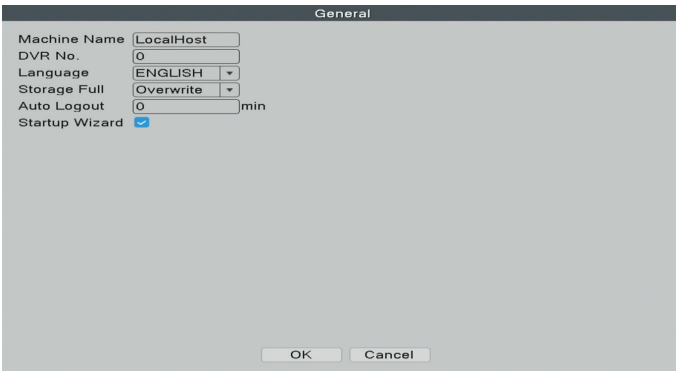


Choosing the Hard Disk, clicking Format Storage, starting to format the HDD.

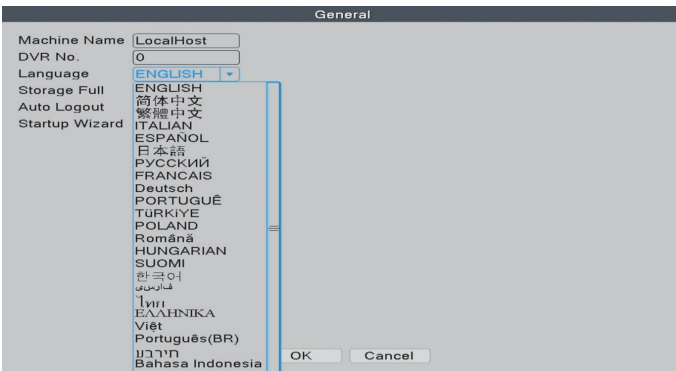
Notice: Please confirm the hard disk is connected. The hard disk should be formatted before first use, so that it can record properly. It will automatically overwrite previous videos when the storage of hard disk is full if you set overwrite.

2.3 General

Right click the mouse→【Main Menu】→【System】→【General】



[Language] You can set the system language to the native language.



[Storage Full]

Choose Overwrite: Keep recording video and automatically overwrite the former video while the storage of HDD is full.

Choose Stop: Stop recording video while the storage of HDD is full.



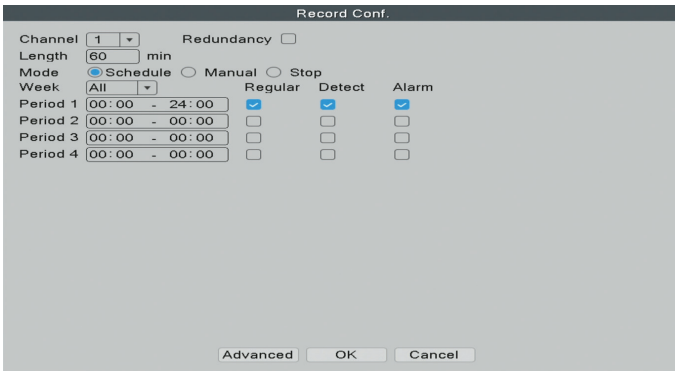
[Auto Logout] You can set up a 0-60 min auto standby. 0 min means you haven't set up the standby time.

[Startup Wizard] Tick it to get startup wizard when reboot the system (untick it as default).

2.4 Record Setup

In the Record Configuration, you can set up the record mode for each channel to save space of the HDD and only record the important videos.

Right click the mouse→【Main Menu】→【Record Conf.】



[Channel] The channel which you want to do settings of record configuration.

[Length] The standard length of each video segment.

[Mode] The way you want to record videos.

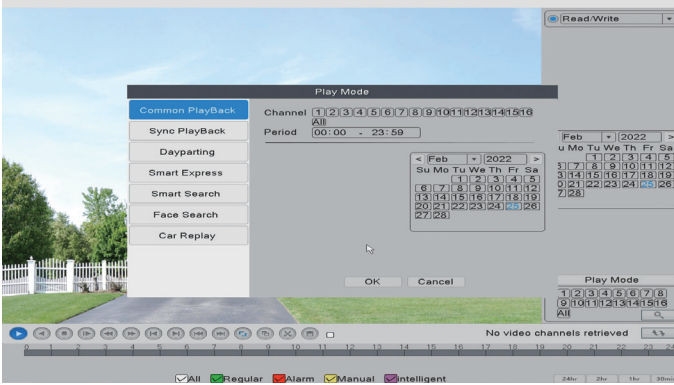
- » Schedule: The selected channel will only record during the chosen time period.
 - » Regular: The system will keep recording during the chosen time period.
 - » Detect: The system will record a video segment when the camera detects movements during the chosen time period.
 - » Alarm: The system will record a video segment when the camera alarms during the chosen time period.
- » Manual: The selected channel will record 24/7.
- » Stop: The selected channel will not record any video.



Notice: If you would like to set the recording mode to "Alarm", please make sure that you have enabled the alarm function of the corresponding channel.

2.5 Video Playback

Right click the mouse → **【Main Menu】** → **【PlayBack】**



In the "Common Playback", you can playback recorded video according to date, time, channel and mode.

- ① Choose Play Mode
- ② Choose Video Date
- ③ Playback Channel Option
- ④ Video Playback Time
- ⑤ Playback Control Key

	Start Playback		Play Backward
	Stop Playing		Slow Playback
	Rewind/Fast-forward		Prev/Next Frame
	Prev/ Next File		Start Editing
	Full Screen		

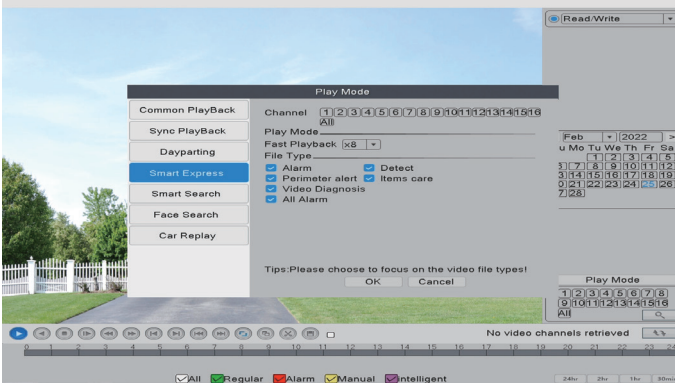


Click the "Smart Express", you can choose different alarm type files for fast playback.

Click the "Smart Search", all recorded videos, which detected motions or humans will be displayed.

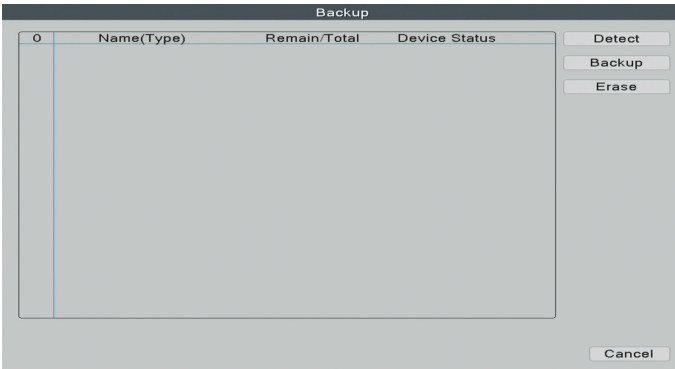
Click the "Face Search", all recorded videos, which detected human faces will be displayed.

Click the "Car Replay", all recorded videos, which detected vehicles will be displayed.



2.6 Video Backup

Right click the mouse→【Main Menu】→【System】→【Backup】

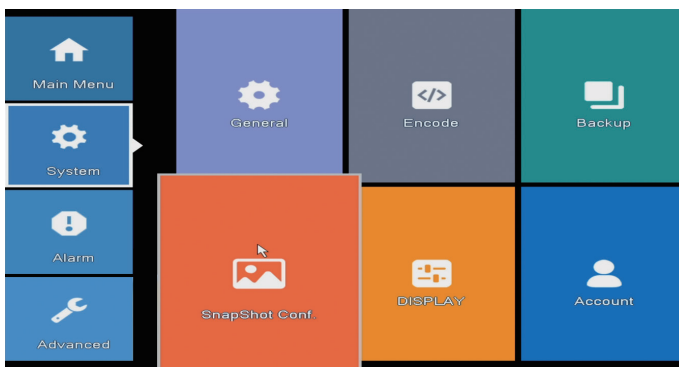


Choose 【Video Type】→【Channel】→【Time】, clicking Add button to search video file, choosing the file in the list, clicking Start button to backup and it will automatically prompt after backup completed.

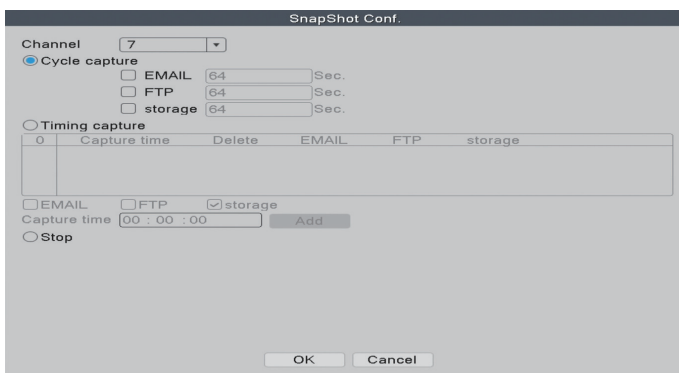
! Notice: USB disk must be FAT32 format. Please choose AVI format while backup, so that the backup video could be played on PC directly.

2.7 Snapshot Configuration

Right click the mouse→【Main Menu】→【System】→【SnapShot Conf.】



[Cycle capture] The camera will take snapshots periodically when you choose Cycle capture. For example, if the default snapshot period is 64 seconds, it means the camera will automatically take snapshot every 64 seconds.



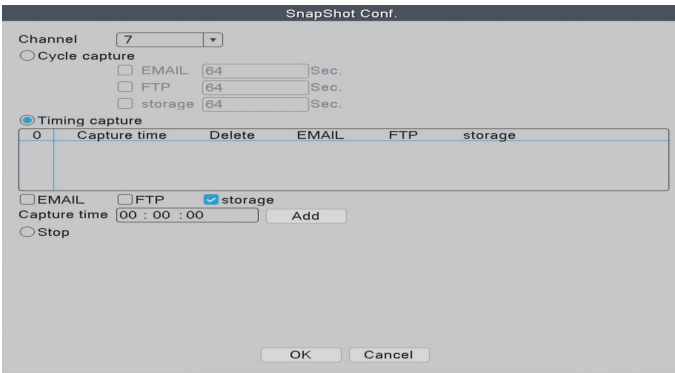
[EMAIL] Tick it and the NVR will send the snapshots captured by the cameras to your e-mail address.

[FTP] Tick it to enable this function. Buyers need to build their own ftp service by themselves.

[storage] Tick it and the NVR will store the snapshots captured by the cameras in the HDD.

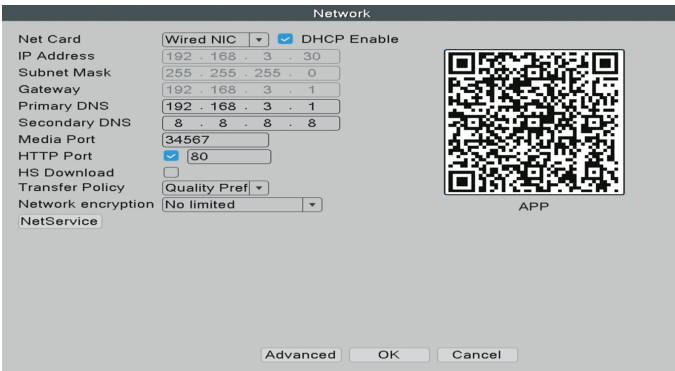


[Timing capture] The camera will take snapshots at the time that you set when you choose Timing capture.



2.8 Network Setup

Connect NVR to Router → Right click the mouse → [Main Menu] → [Network]



[DHCP Enable] Tick it to automatically obtain the IP address assigned by the server.

[IP Address] It has to be a unique IP address on the same LAN segment to avoid conflicts with other equipment in local area.

[HTTP Port] A port number for remote visit, default value is 80.

[NetService] Here you can enable functions like RTSP, FTP, Email and other services.



2.9 Check Nat Status

Right click the mouse→【Main Menu】→【Advanced】→【Version】



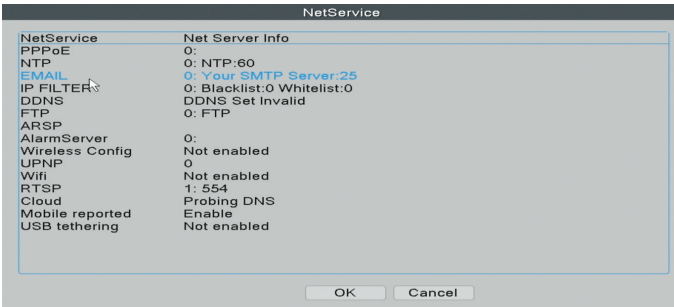
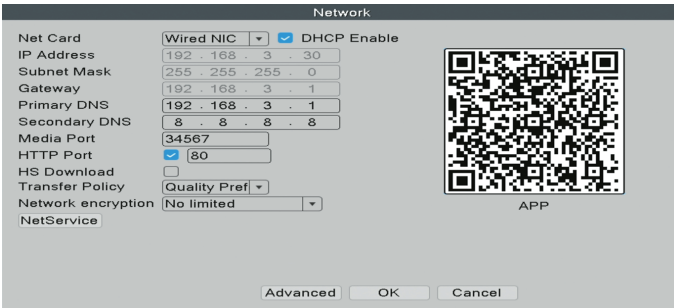
[Serial Number] Device Serial Number for remote view.

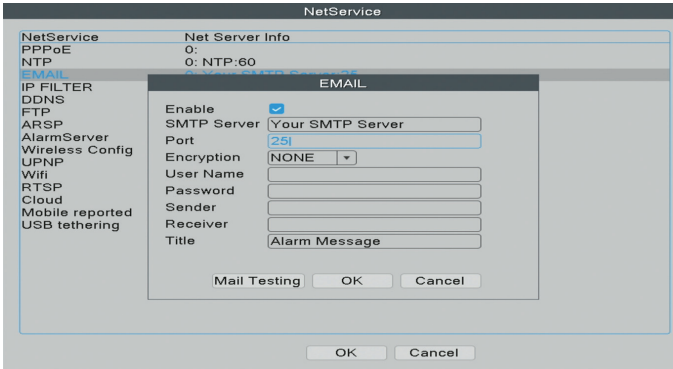
[Nat Status] Check the network status, begin a remote monitoring when shows connected.

[Device Info] Edit function like playback preview, face and human detection.

2.10 Email Setup

Right click the mouse→【Main Menu】→【Network】→【NetService】→【EMAIL】





[SMTP Server] Sender's mailbox (for example: gmail / email).

[Port] Sender's mailbox SMTP port.

[Encryption] SSL.

[User Name] Username of the sender's mailbox (must support and open SMTP function).

[Password] Password of the sender's mailbox. Go to get 16-digit app password on your email setting.

[Receiver] Receiver's mailbox.

[Mail Testing] Click and it will send an email to receiver to test the Email setting.

⚠ Notice: Before testing the Email, please confirm the Network has been connected successfully.

» How To Get 16-Digit App Password


Enable IMAP access of your e-mail.

General Labels Inbox Accounts and Import Filters and Blocked Addresses **Forwarding and POP/IMAP**

3. Configure your email client (e.g. Outlook, Eudora, Netscape Mail)
Configuration instructions

IMAP access:
(access Gmail from other clients using IMAP)
[Learn more](#)

Status: IMAP is enabled

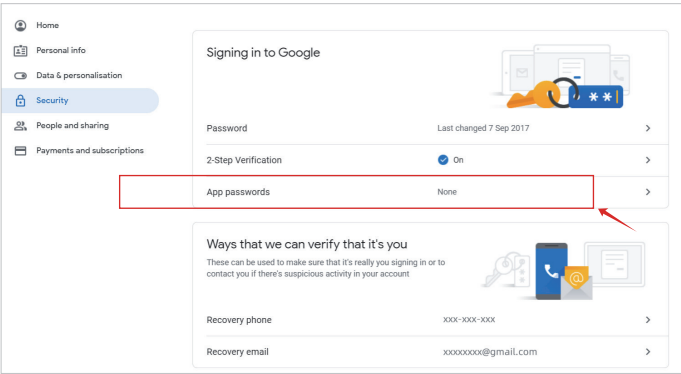
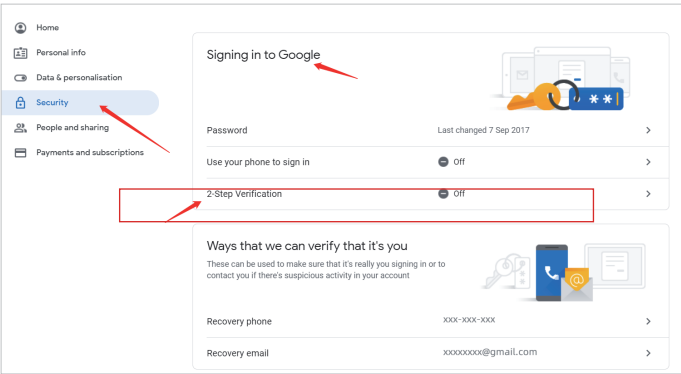
- Enable IMAP 
- Disable IMAP

When I mark a message in IMAP as deleted:

- Auto-Expunge on - Immediately update the server. (default)
- Auto-Expunge off - Wait for the client to update the server.



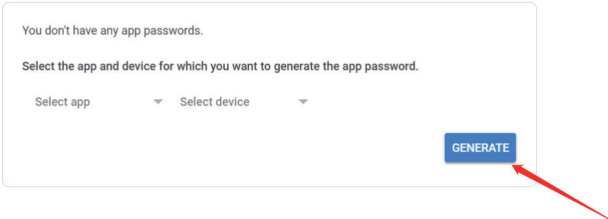
Log in your Google account. In "Security" section, find "Signing in to Google". If the "2-Step Verification" is off, please enable it.



You will get a 16 digits password that you need to use later to set up your email notice in NVR system.

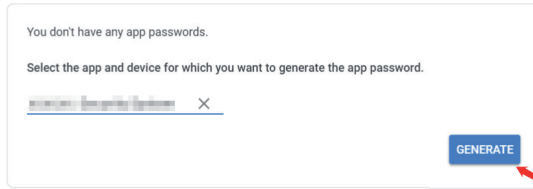
← App passwords

App passwords let you sign in to your Google Account from apps on devices that don't support 2-Step Verification. You'll only need to enter it once so you don't need to remember it. [Learn more](#)



← App passwords

App passwords let you sign in to your Google Account from apps on devices that don't support 2-Step Verification. You'll only need to enter it once so you don't need to remember it. [Learn more](#)



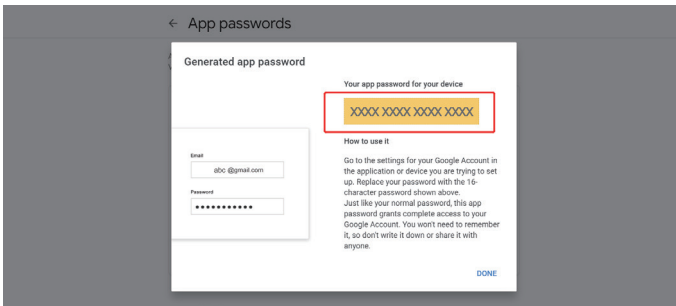
You don't have any app passwords.

Select the app and device for which you want to generate the app password.

Google Assistant X

GENERATE

You will get a 16 digits password that you need to use later to set up your e-mail notice in NVR system.



← App passwords

Generated app password

Your app password for your device

XXXX XXXX XXXX XXXX

How to use it

Go to the settings for your Google Account in the application or device you are trying to set up. Replace your password with the 16-character password shown above.

Just like your normal password, this app password grants complete access to your Google Account. You won't need to remember it, so don't write it down or share it with anyone.

DONE

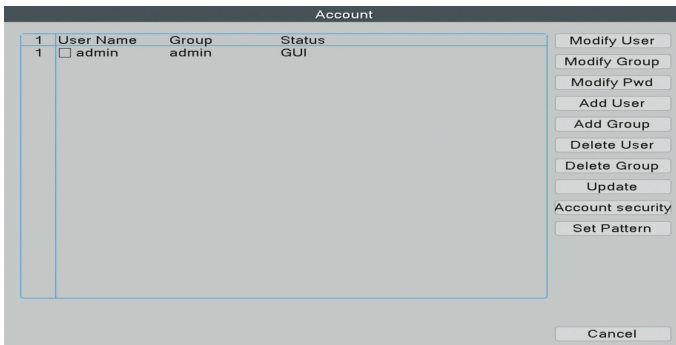
Email: abc@gmail.com

Password:

⚠ Notice: You are not able to review the password after you click "DONE" so please write it down or leave this page open.

2.11 User Management

Right click the mouse → **[Main Menu]** → **[System]** → **[Account]**



	User Name	Group	Status
1	<input type="checkbox"/> admin	admin	GUI

Modify User

Modify Group

Modify Pwd

Add User

Add Group

Delete User

Delete Group

Update

Account security

Set Pattern

Cancel



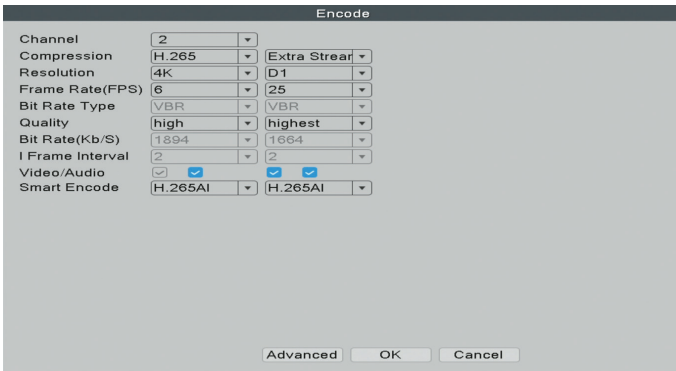
[**Modify Pwd**] Enter to Modify Password page, and modify password.

[**Add User**] Add User account and set up the User's permissions. Enter the Add User page and input the User Name and Password.

! **Notice:** Password can be setup as number+letter combination, please record your password in other ways and keep it in a safe place to avoid forgetting.

2.12 Audio Setting

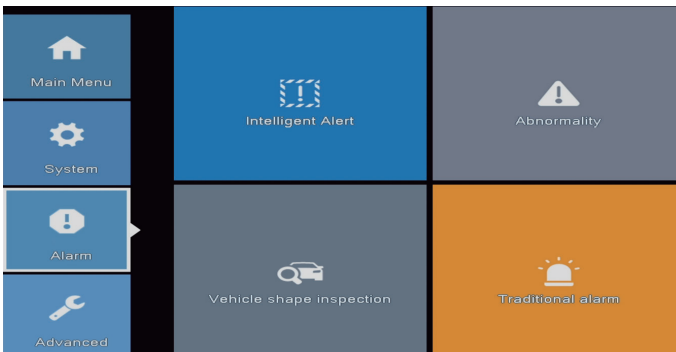
Right click the mouse→**【Main Menu】**→**【System】**→**【Encode】**



[**Video/Audio**] Tick four blanks to show the file for streaming video and audio.

2.13 Alarm

Right click the mouse→**【Main Menu】**→**【Alarm】**

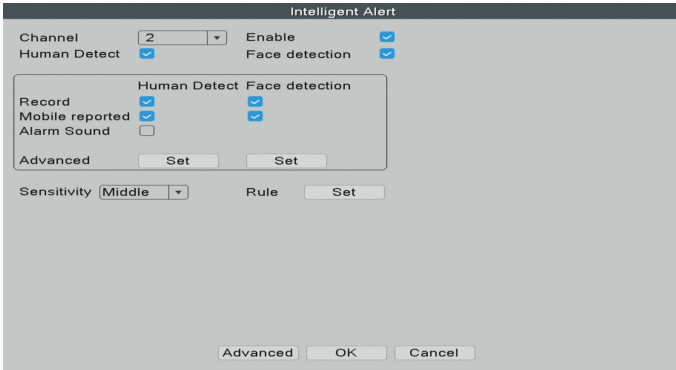




The NVR supports intelligent alerts, such as human detection, face detection, vehicle detection and traditional alarm. You can set different intelligent alerts if your cameras also support these functions through the following operations.

2.13.1 Intelligent Alert Setting

Right click the mouse→【Main Menu】→【Alarm】→【Intelligent Alert】



[Channel] Choose the camera which you want to do alert settings.

[Enable] When it is unticked, the camera will not detect any movements.

[Human Detect] The camera will detect human activities by recognizing humanoid body shape.

[Face detection] The camera will detect human face when this option is ticked on.

[Record] When it is ticked on, the camera will record a video segment when human/face detected.

[Mobile reported] When it is ticked on, the camera will send alert notifications to your mobile App when it detects movements or human activities.

[Alarm Sound] When it is ticked on, the camera will make a voice alarm when it detects movements or human activities.

[Sensitivity] Adjust the detection sensitivity of the camera.

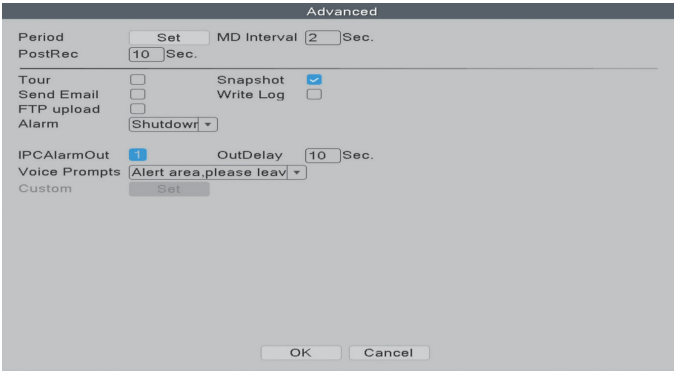
[Rule] Set advanced detection rules like safe zone or line cross alarm.



⚠ Notice: If the "Enable" option is on and the "Human Detect" is off, the camera will detect all movements, including pets, vehicles, plants, etc. Therefore, we recommend you to active "Human Detect" to reduce false alerts. It shows that "Human Detect" function can reduce 98%-99% of the false alerts. If you need to enable this function please make sure your camera support human/face detection.

2.13.2 Advanced Setting of Human Detection/Face Detection

Right click the mouse→【Main Menu】→【Alarm】→【Intelligent Alert】→【Human Detect】/【Face detection】→【Advanced】，click Set button.



[Period] The time period of the detection.

[MD Interval] The interval between 2 human motion movements alerts.

[PostRec] To adjust the length of the video after the camera detects abnormal movements.

[Tour] Not applicable.

[Snapshot] When it is ticked on, the camera will take snapshots when it detects abnormal movements.

[Send Email] When it is ticked on, the camera will send alerts to your e-mail address when it detects abnormal movements.

[Write Log] When it is ticked on, the NVR will mark down the alarm record. You can review the records by following this path: Right click the mouse→【Main Menu】→【Advanced】→【Log】.

[FTP upload] Not applicable.



[Alarm] Shutdown: It means to turn off all alarm sounds.

Voice Prompts: You can select to turn on different alarm sounds.

[IPC AlarmOut] For setting Blue&Red Alarm Light. Some models of our PoE AI Cameras are built in Red LED lights and Blue LED lights. When human detected, the red lights and blue lights will flash alternately to scare off intruders whether day or night.

If your cameras support the function of Red-Blue Light Alarm, and you want to disable the function, please right click the mouse → **[Main Menu]** → **[Alarm]** → **[Intelligent Alert]** → **[Human detection]** → **[Advanced]**, click Set button, untick the **[IPCAlarmOut]**.

[Voice Prompts] To choose the different alarm sounds for the voice prompts.

If you have set the function of face detection, on screen of the monitor with live video, you can view the human faces detected by the cameras. You can easily and quickly get whether the persons detected by the camera are your friends or intruders. If he is an intruder, the face detection function can help take some actions as soon as possible to protect your safety and property.

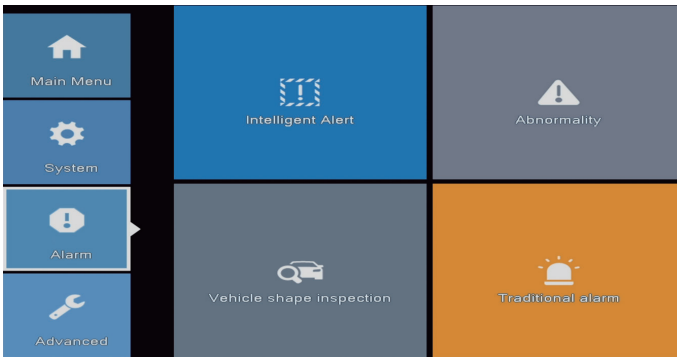


When the cameras detect human faces, the NVR will show you these faces on the right side of the screen like the image above.



2.13.3 Advanced Settings of Vehicle Detection

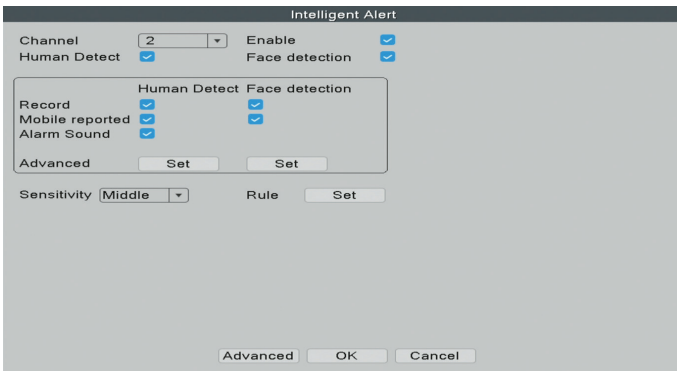
Right click the mouse→【Main Menu】→【Alarm】→【Vehicle shape inspection】



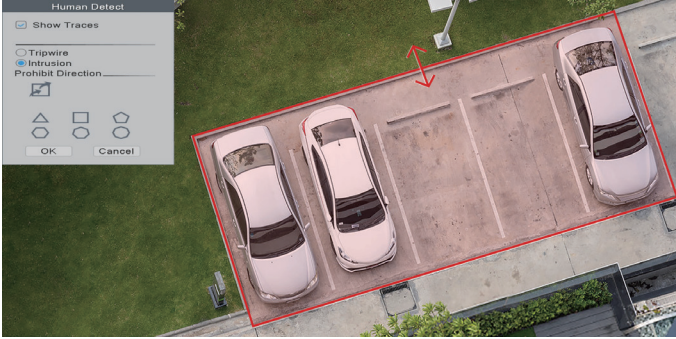
2.13.4 Advanced Settings of Safe Zone & Line Cross Alarm

You can set up a safe zone for camera. The camera will only detect or make alarm sound when there are abnormal activities in the safe zone.

Right click the mouse→【Main Menu】→【Alarm】→【Intelligent Alert】→【Rule Set】



Choose the safe zone shape which you would like to use. In this user manual, we use rectangle as example.



Click & hold the sides of the different patterns then drag the sides to change the shape and the size of the safe zone.



You can also choose other size such as circle to protect our valuable objects.



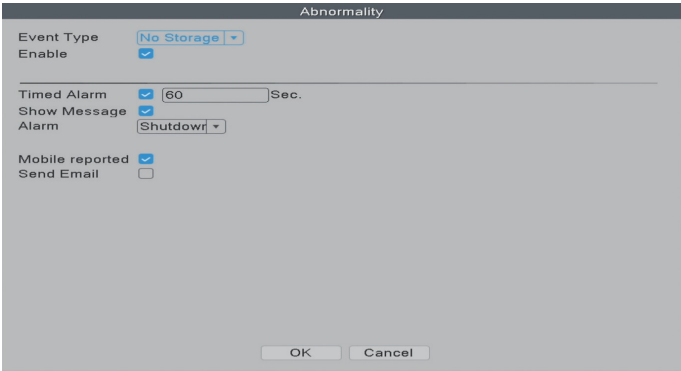


When you choose "Tripwire" in stead of "Intrusion", there will be a line on the screen and the camera will only detect or make alarm sound when people cross this line.



2.13.5 Abnormality Settings

Right click the mouse→【Main Menu】→【Alarm】→【Abnormality】, in this part, you can set the alarm for other events.



In the 【Event Type】, there are several options:

- 【No Storage】 The NVR can't detect HDD.
- 【Storage Device Error】 The NVR detects that the HDD is not working correctly.
- 【Storage No Space】 The HDD is full.
- 【Net Disconnection】 The NVR is disconnected to the Internet.
- 【IP Conflict】 There are other devices in the LAN using the same IP address as this NVR.



You can also choose different notification types:

[[Show Message](#)] The error message will show on the monitor screen.

[[Alarm](#)] Shutdown: It means to turn off all alarm sounds.

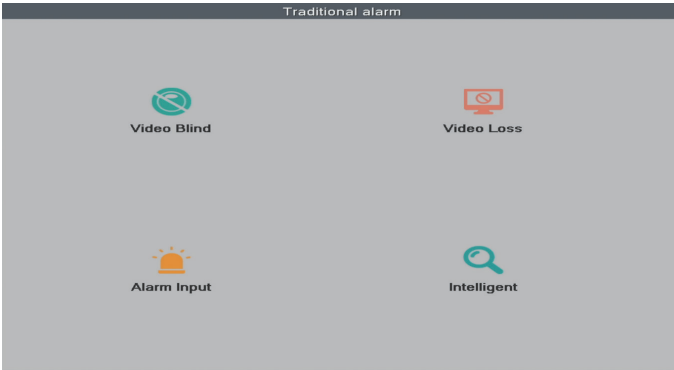
Voice Prompts: You can select to turn on different alarm sounds.

[[Mobile reported](#)] The NVR will send error message to the App.

[[Send Email](#)] The NVR will send error message to your e-mail address.

2.13.6 Traditional Alarm Setting

Right click the mouse→**[Main Menu]**→**[Alarm]**→**[Traditional alarm]**, in this part, you can adjust the settings for other alarm types.



[[Video Blind](#)] The camera is covered and blinded.

[[Video Loss](#)] The camera loses connection with the NVR.

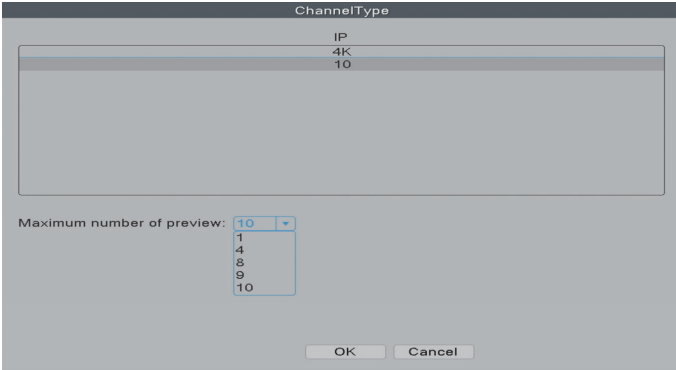
[[Alarm Input](#)] The alarm input from the cameras.

[[Intelligent](#)] Not applicable.

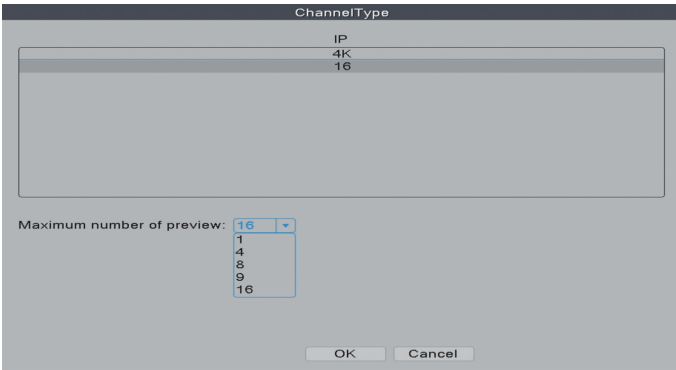


3 Digital Channel Setup

Right click the mouse→【Main Menu】→【Advanced】→【Digital】→【ChannelType】
4CH PoE NVR supports to be expanded to 10 channel.



8CH PoE NVR supports to be expanded to 16 channel.



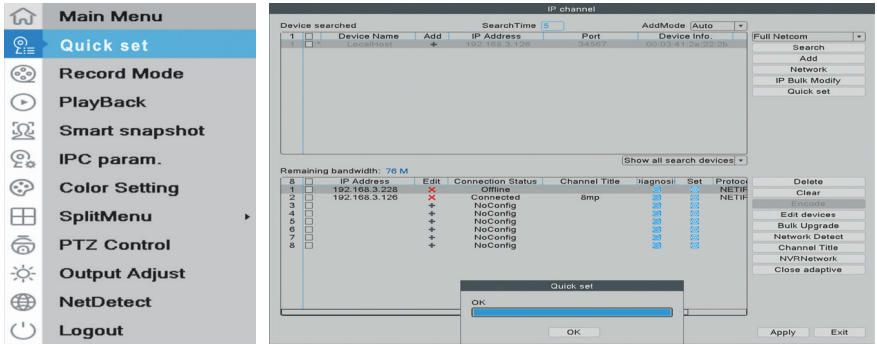
[Maximum number of preview] Number of cameras can be viewed simultaneously.



4 Add IP Camera

This PoE NVR is expandable and supports Onvif. It means that the recorder is compatible with all the PoE IP cameras which support Onvif protocol. If you want to connect more cameras to the recorder, you need to pair the recorder and the cameras first.

Right click the mouse→【Main Menu】→【Quick Set】



Click "Search" and the cameras will be able to be chosen on the upper chart. Click "Add" then the camera will be paired with the NVR.

[AddMode] Auto and Manual for optional.

5 Remote View

Right click the mouse→【Main Menu】→【Advanced】→【Version】





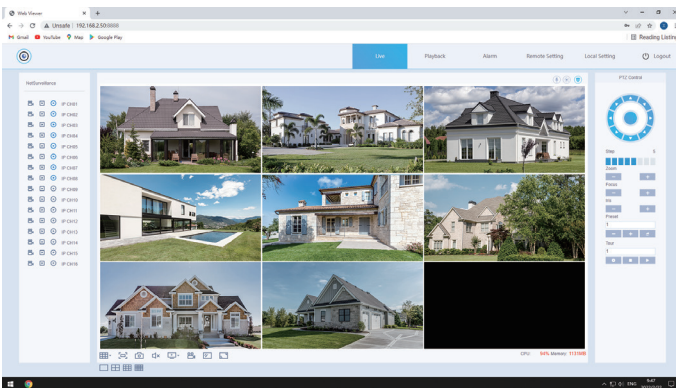
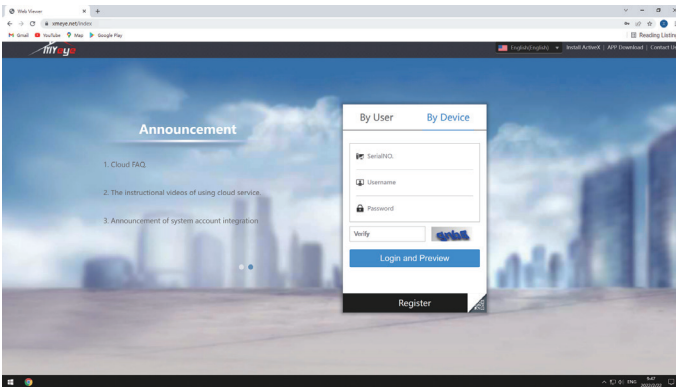
Serial Number: Enter device Serial Number

Username: admin (Default)

Password: Just leave it blank as default (But you need to fill in your own password if you have changed the password before).

5.1 Remote View via PC

Open the Google Browser, enter website: <https://www.xmeye.net>, arrive at browsing page of remote view, choose "By Device". Then enter Serial No., User name, Password and Verify to realize remote view.



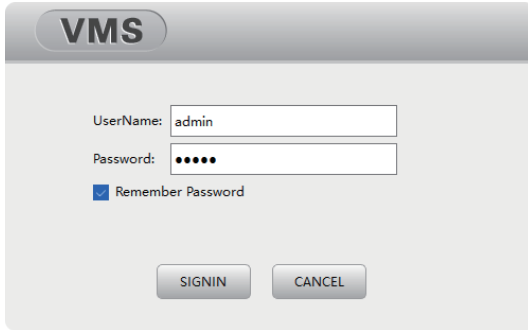


5.2 Remote View via PC Client Software

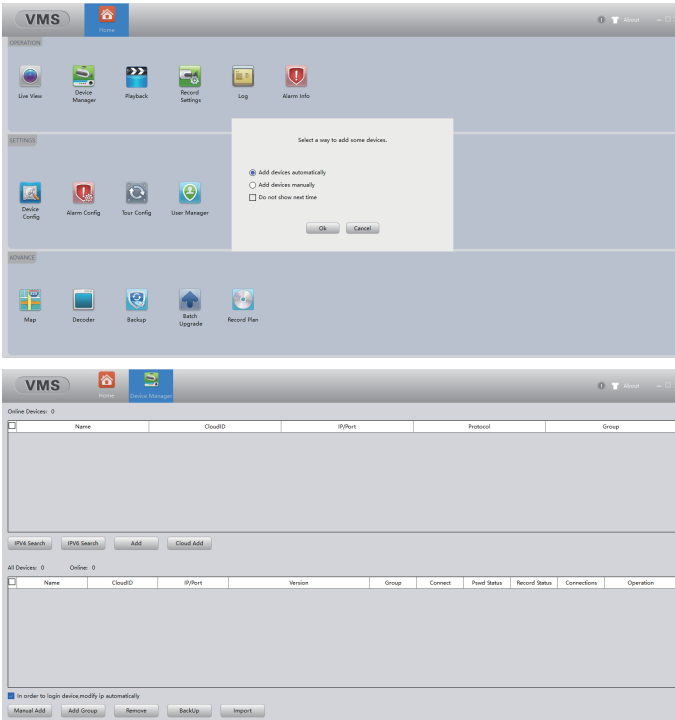
Download Center:

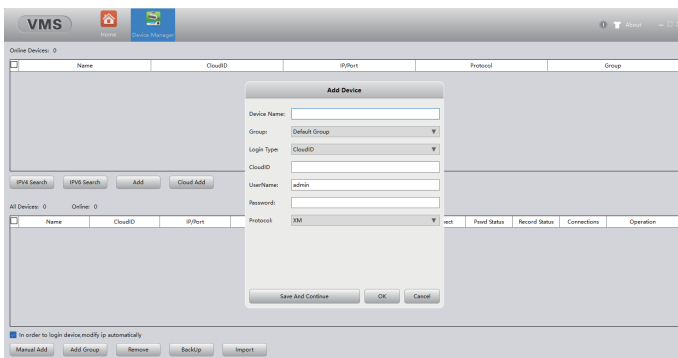
<https://www.securitycamera.com/Software-a640163.html>

Open VMS PC client software after installation.

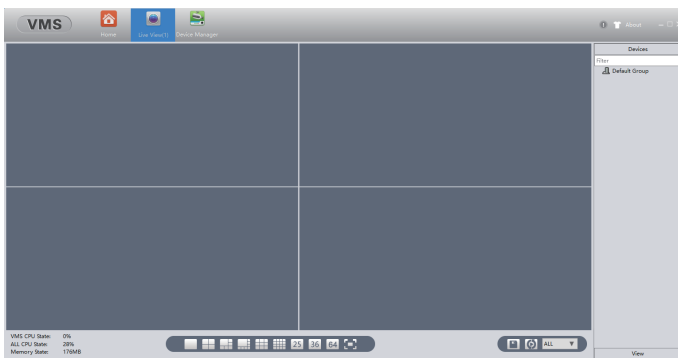


Click [Device Manager] and choose [Add devices automatically] to add the device.





Live view via VMS.



5.3 Remote View Via Smart Phone

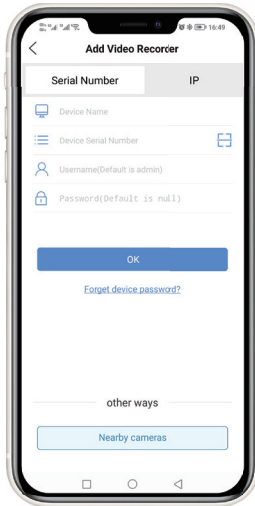
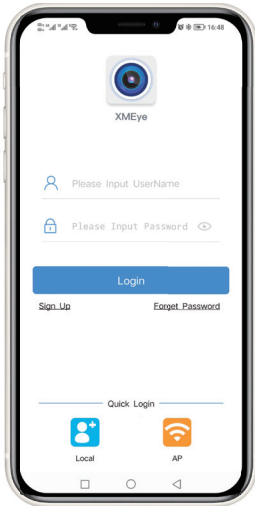
① Install the software; scan the QR code or search XMEye Pro in App store to download.

When turn on NVR for the first time→【Camera Test】→【Time Setup Wizard】→【Network】





② Install successfully, register user, add device and begin a remote view.

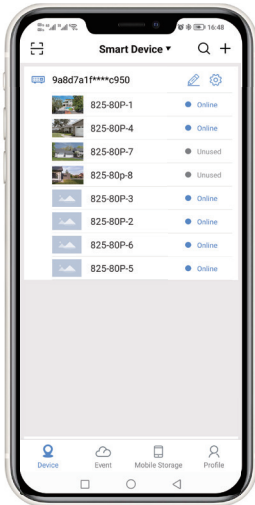


Step 1:

Tap register and input your Username, Password to create a new account.

Step 2:

Click "+" to add devices: input Serial No., username and password .



Step 3:

After device added, click it to link the sever.

Step 4:

Connect successfully and start to view video.

All rights reserved. No part of this publication may be reproduced by any means without written permission from our company. The information in this publication is believed to be accurate in all respects.

Our company will not assume responsibility for any consequences resulting from the use thereof. The information contained herein is subject to change without notice. Revisions or new editions to this publication may be issued to incorporate such changes.

