

QUICK START

RUNNING A CYCLE

THE AC POWER CORD AND ON/OFF SWITCH IS LOCATED AT THE REAR OF THE UNIT.

AFTER POWERING THE UNIT ON, THE SYSTEM COMPLETES A 5-SECOND SYSTEM LEVEL POWER UP CHECK



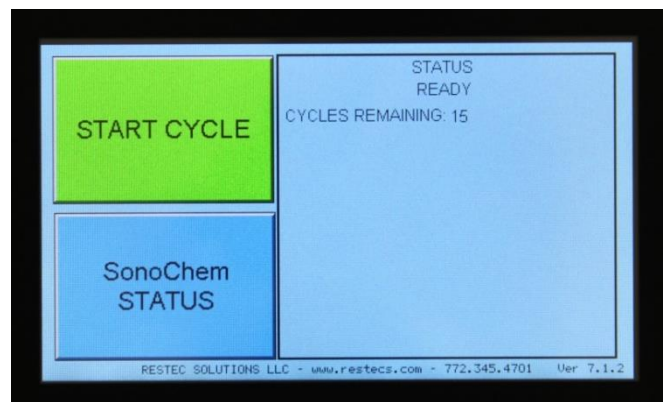
LOAD ITEMS IN THE DISINFECTION CHAMBER

PRE-CLEAN VISIBLE BIO-BURDEN FROM ITEMS TO BE DISINFECTED

VAPORIZED PERACETIC ACID (VPA) PROVIDES THE METHOD OF ACTION DURING THE DISINFECTION PROCESS

TO BEGIN A CYCLE, CLOSE CHAMBER DOOR AND PRESS THE GREEN START CYCLE

THE CHAMBER DOOR LATCHES AUTOMATICLY AND THE 5-MINUTE DISINFECTION CYCLE BEGINS.

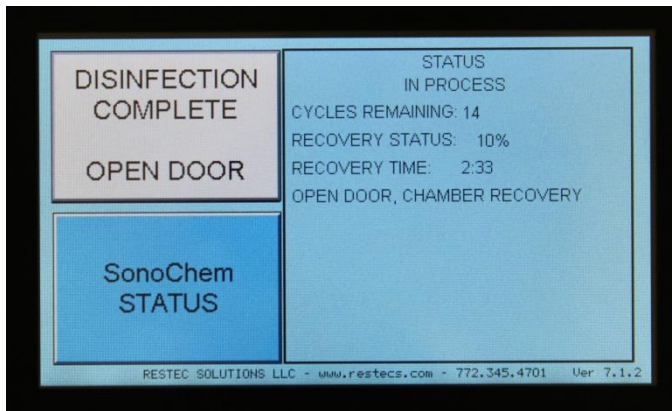
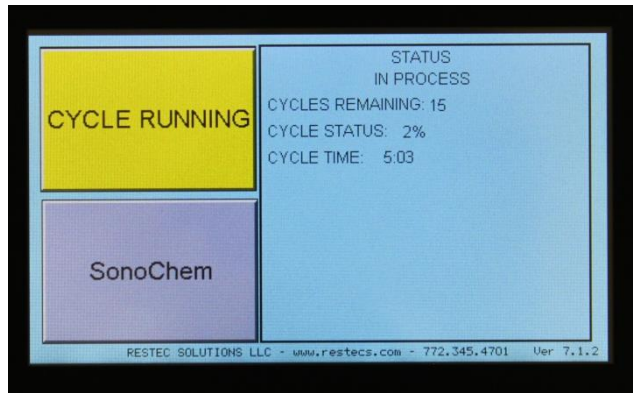


QUICK START

RUNNING A CYCLE

THE CYCLE TIME AND STATUS INDICATE WHEN CHAMBER DOOR CAN BE OPENED AND THE ITEMS RETRIEVED

CYCLE TIME IS 5:00 MINUTES



DISINFECTION COMPLETE IS THE INDICATION TO OPEN DOOR AND REMOVE THE ITEMS

THE CHAMBER DOOR LOCK UNLATCHES WITH A NOTABLE **“CLICK”**, AND THE **WHITE CHAMBER LIGHT** IS THE INDICATION TO RETRIEVE THE ITEMS FROM THE CHAMBER

WHEN OPEN DOOR MESSAGE IS DISPLAYED, THE 3-MINUTE CHAMBER RECOVERY BEGINS

IT'S RECCOMENDED THE CHAMBER DOOR REMAIN OPEN DURING THE CHAMBER RECOVERY, THIS ALLOWS THE DISINFECTION CHAMBER TO RETURN TO AMBIENT CONDITIONS PRIOR TO BEGINNING NEXT CYCLE

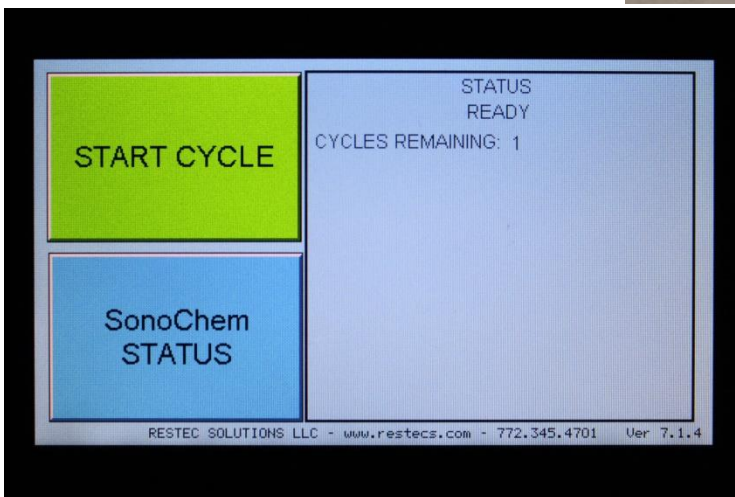


SonoChem® IS A REGISTERED TRADEMARK of RESTEC Solutions LLC

VPA D UTILIZES A TWO – PART CHEMICAL SYSTEM:

SonoChem –A (ROUND) IS A CONCENTRATED PAA STERILANT

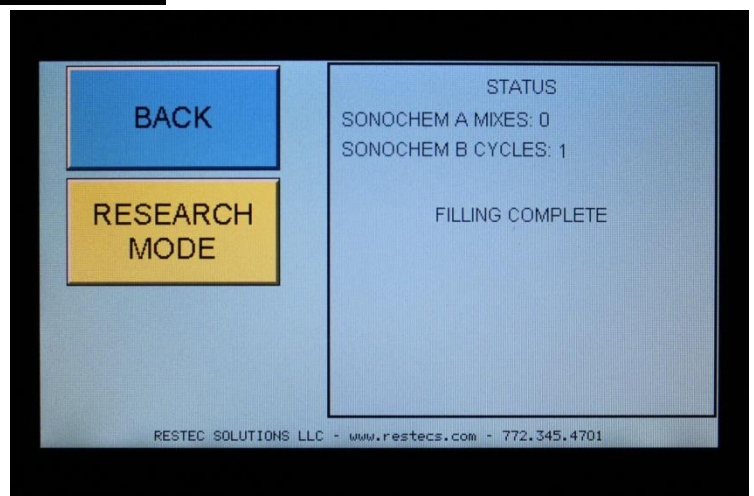
SonoChem –B (SQUARE) IS A pH BALANCED DILUENT AGENT



ON THE RUN SCREEN, THE SYSTEM SHOWS CYCLES REMAINING AND WILL PROMPT THE OPERATOR WHEN RELOADING IS REQUIRED

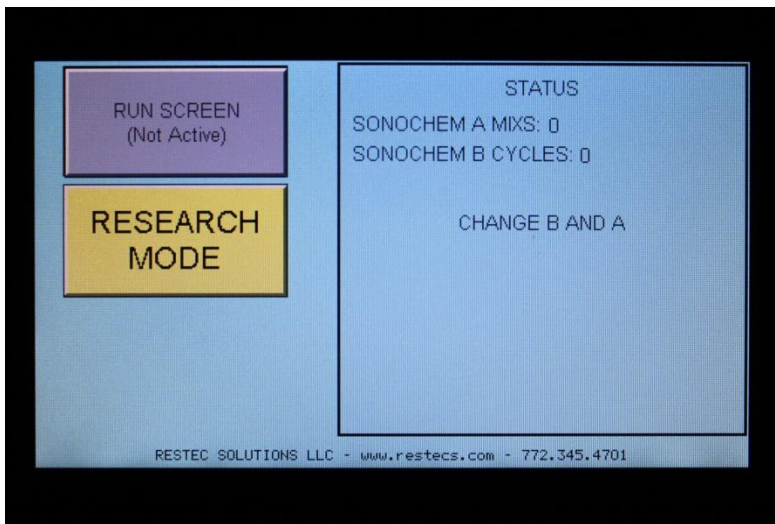
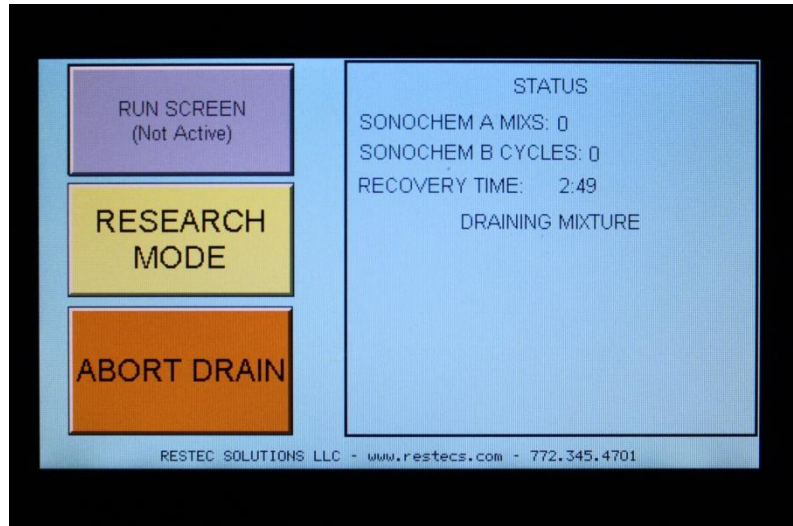
THE SonoChem STATUS SCREEN SHOWS THE STATUS OF SonoChem A – B AND ANY ACTIONS REQUIRED

RUN SCEEN IS ACCESSED BY PRESSING BACK



WHEN SonoChem CHANGE IS REQUIRED, AT THE END OF A CYCLE, THE SYSTEM DISPLAYS THE **SonoChem STATUS SCREEN**

*DURING RECOVERY, THE SYSTEM AUTOMATICALLY DRAINS THE SPENT MIX INTO THE EMPTY **SonoChem B BOTTLE** THAT WILL BE DISCARDED*



LIFT SLIDER **ALL THE WAY UP** TO CHANGE SonoChem BOTTLE

NOTE

CHANGE OF SonoChem B WILL BE REQUIRED EVERY 15 - CYCLES

CHANGE OF SonoChem A WILL BE REQUIRED ONLY AFTER 10- SonoChem B BOTTLE CHANGES

LOWER SLIDER AND CONFIRM THE SonoChem BOTTLE CHANGE OUT, THE SYSTEM WILL AUTOMATICLY LOAD CHEMISTRY FOR USE

