



- Rules -

2022 Carp/Tilapia Eradication Competition

Saturday, 29th October



- By applying for entrance into the Logan & Albert Fish Management Association's Carp/Tilapia Eradication Competition, you hereby agree to abide by all rules and regulations pertaining to this competition.
- All decisions by the weigh masters/judges are final.
- All fish presented at weigh station for prizes must be line caught on the day of competition.
- Boundaries - confines of Wyaralong Dam up to Beaudesert-Boonah Rd crossing at Coulson.
- Gates open at 5.30am and fishing commences at 7am.
- Weigh in commences at 10am and ceases at 2pm - you must be at weigh station by 2pm.
- Insurance Indemnity Form must be signed and submitted with your entry form.
- Fishing can be from the bank, canoe, kayak or boat - boats that have petrol motors attached can be used but petrol motor is not to be started - electric motors only to be used.
- You must follow the directions of the parking marshals.
- ***A Stocked Impoundment Permit is required when fishing Wyaralong Dam.***
- Any Carp or Tilapia captured must not be returned to the water.
- Please do not litter - use rubbish bins provided.
- LAFMA recommends that all native fish captured on the day be released unharmed.
- When on the water, LAFMA recommends that all competitors wear life jackets.
- The Weigh Station will be at the top of the boat ramp next to the carp/tilapia disposal bin.
- You must be present at the presentation to be eligible for the lucky prize draws.

Remove these 2 fish from the water - Carp & Tilapia

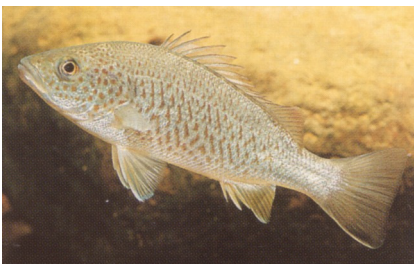


Carp

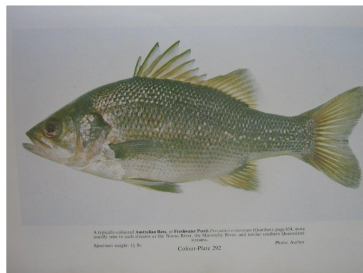


Tilapia

Release these 3 fish if caught



Spangled Perch



Australian Bass



Mary River Cod