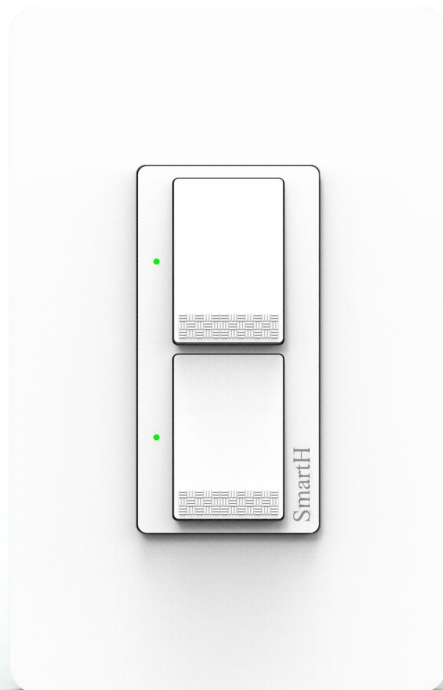




# SmartH



# Hello, Smart Home



# ENERGY SAVING



# 2 Gang Smart Switch User Guide

## Notes Before Installation

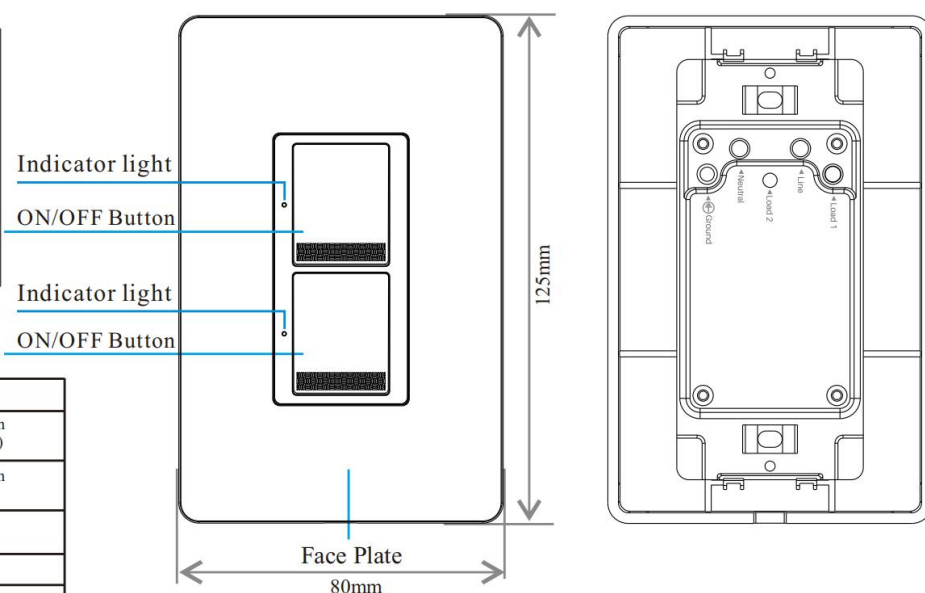
1. Wi-Fi Only support a 2.4GHz network (802.11 b/g/n)
2. Neutral wire Required.
3. basic electrical wiring knowledge or experience required , or please consult a professional electrician
4. Never connect the neutral wire to any switch wires
5. ON/OFF Button also can be used as reset button, long press to reset your smart switch to factory defaults. Only do this if you are sure you want to erase all your settings

## Specifications

Type	Smart Light Switch
Model	S02
Power supply mode	Neutral+Live Wire
Input	AC120V~60Hz
Rated Power	600W/Gang Total:1200W Max Resistive
Wireless Frequency	2.4GHz
Wireless Standard	IEEE802.11 b/g/n

## Indicator light meaning

Indicator	Status	Discription
White	Flash Rapidly	Ready for connection (Default Mode Only)
White	Flash Slowly (1 time every 3 S)	Ready for connection (AP Mode Only)
White	Off	Turn the light off
Red	On	Turn the light on
White	Flash Slowly	Networking



**Safety Notice:**

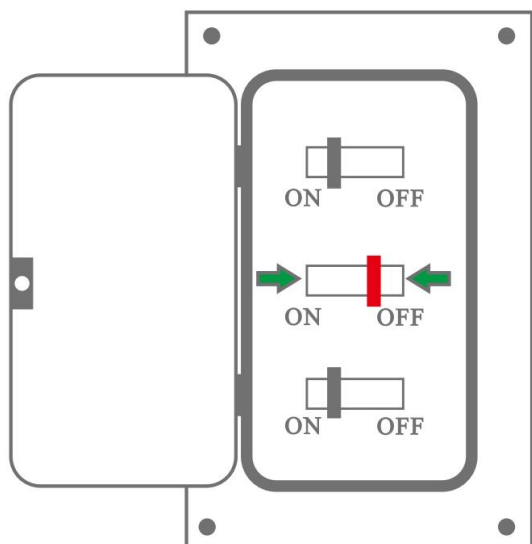
- **Cut off the power before installation**
- **Please use it only when it's installed with RCD or current leakage protector at home**
- **A neutral wire is needed to power the switch.**

## Installation Guide

### Step 1

#### Turn off circuit breaker

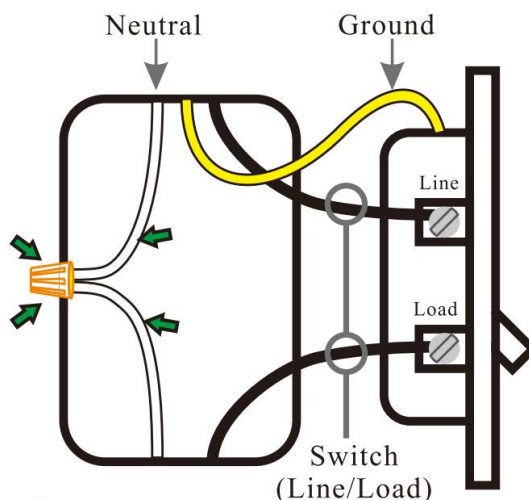
Find your light's control in your circuit breaker and turn it off, Then make sure the power is off by flipping your switch a few times.



### Step 2

#### Find the neutral wire

In the wall cassette . look for one or more white wires secured with a wire nut. Do you have a neutral wire?



**⚠️ If you can't find neutral wire**

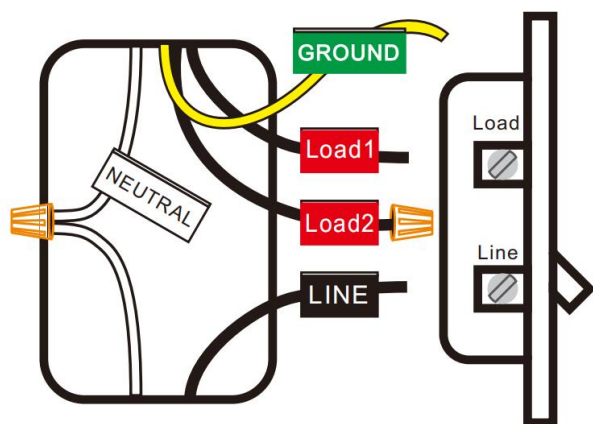
Please change another wall cassette. to find a neutral wire,if you really can't find out a neutral wire in your wall cassette. please contact professional electrician to help you.

2

### Step 3

#### Label your wires

Mark or record the corresponding line before removing the old switch



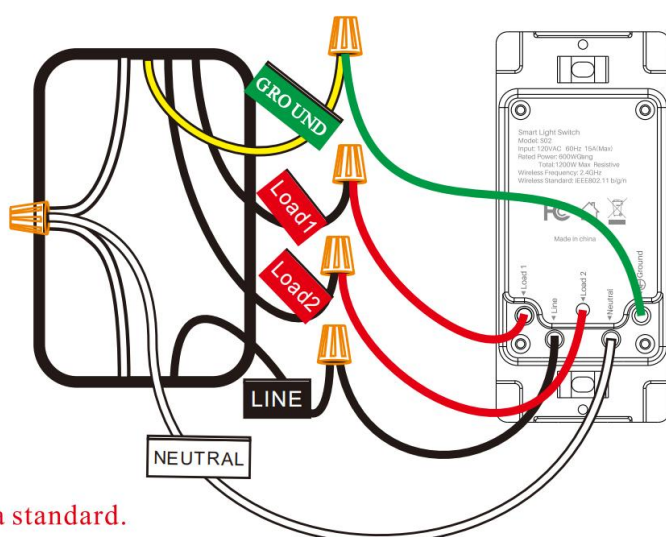
Usually:  
 White represents the neutral line  
 Black represents the fire line  
 Green or yellow or a single bare copper wire representing the ground wire

The above is for reference only and cannot be used as a standard.

### Step 4

#### Install switch

Use wire-nuts to connect the switch wires to your home wires , following the diagram. Be careful to match line and load wires. Then remove the stickers, screw the switch into the wall. And attach the faceplate.

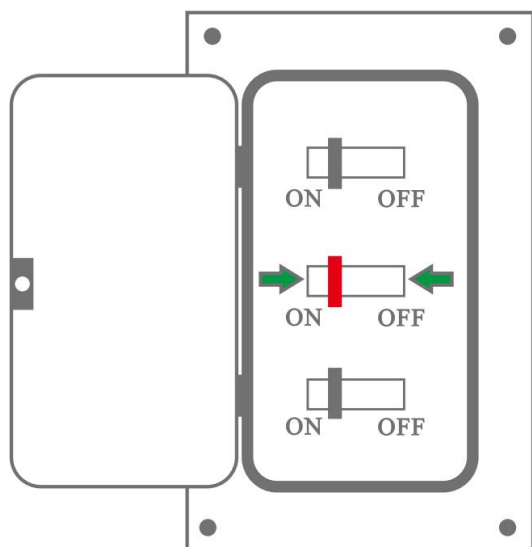


3

**STEP.5**

**Turn on circuit breaker**

Turn on your switch's power from the circuit breaker. Press the switch a few times to make sure it works.

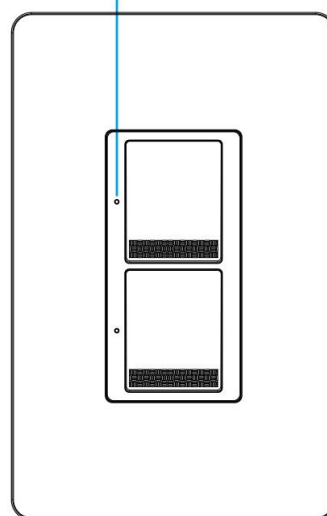


**STEP.6**

**Check the Wi-Fi light**

Tap NEXT when the Wi-Fi indicator light blinks

Indicator light rapidly blinks (2 times per second)



**Install the “MySmarth” APP**

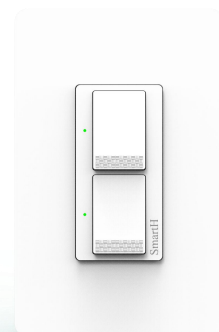
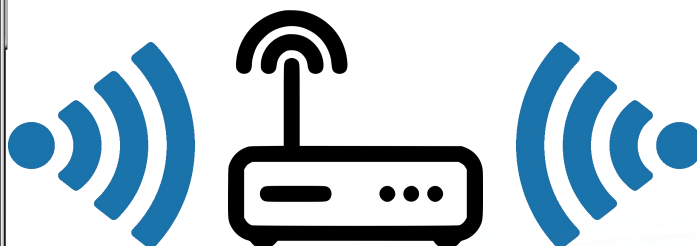
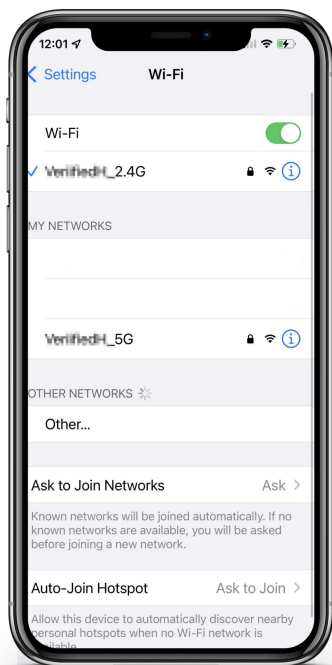
**Step A** .Find out “MySmarth”app in Apple app store, Google Play, or scan the QR code below and install it.



The free app”MySmarth” is compatible with mobile devices the support IOS8.0 above, Android 4.4 above

**Step B** .Enter the register interface, input the email address/phone number for getting the verification code to register an account. Please just login if you already have a MySmarth account.

# 1. Set Up Router



Please keep network available

2.4GHz

5GHz



The router supports the 2.4GHz WiFi (doesn't support the 5GHz), and is connected to the WiFi network. Please set the parameters of the router before connecting the WiFi network, and record the SSID and password of your WiFi.

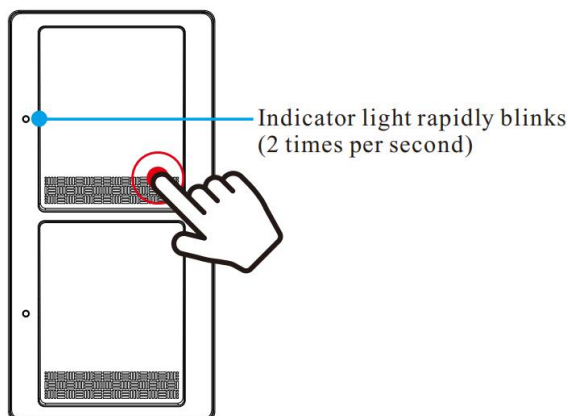
# 2. Turn On Your Smartphone's Bluetooth



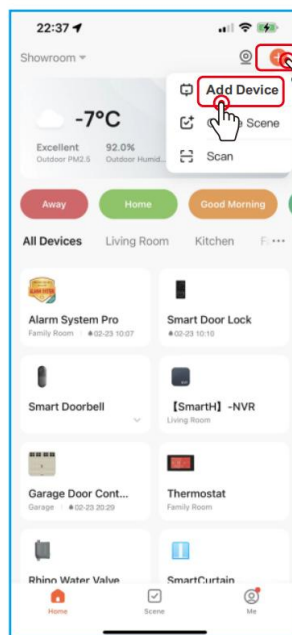
Turn on your smartphone's Bluetooth.

**Step C:** Add the switch to MySmARTH APP

Note: This smart switch can only support 2.4G network and cannot work with 5.0G network. please check if your home network is 2.4G and make sure that your phone has been connected to your WI-FI home network

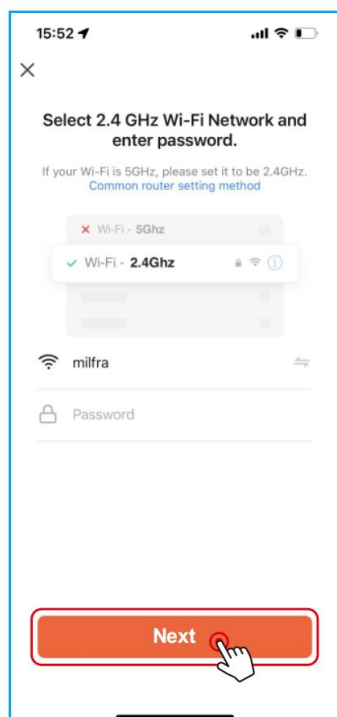


**Step.1.** After powering on, press and hold the ON/OFF button for 5-7 seconds, and the indicator light flashes quickly

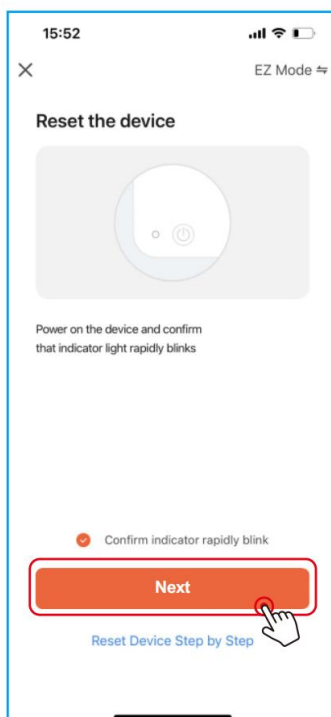


(1) Tap "+" button on top right corner to add device.

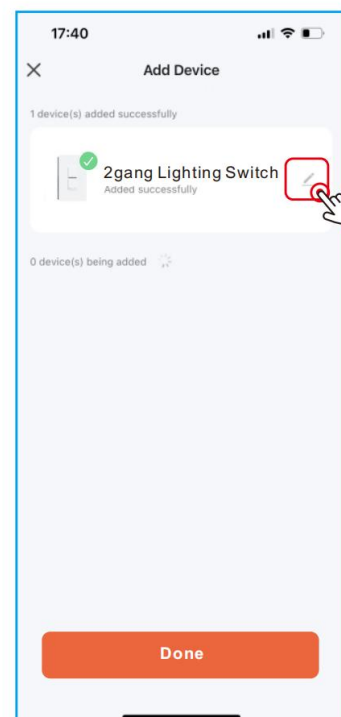
6



**Step.2**  
Enter Wi-Fi password to join your network



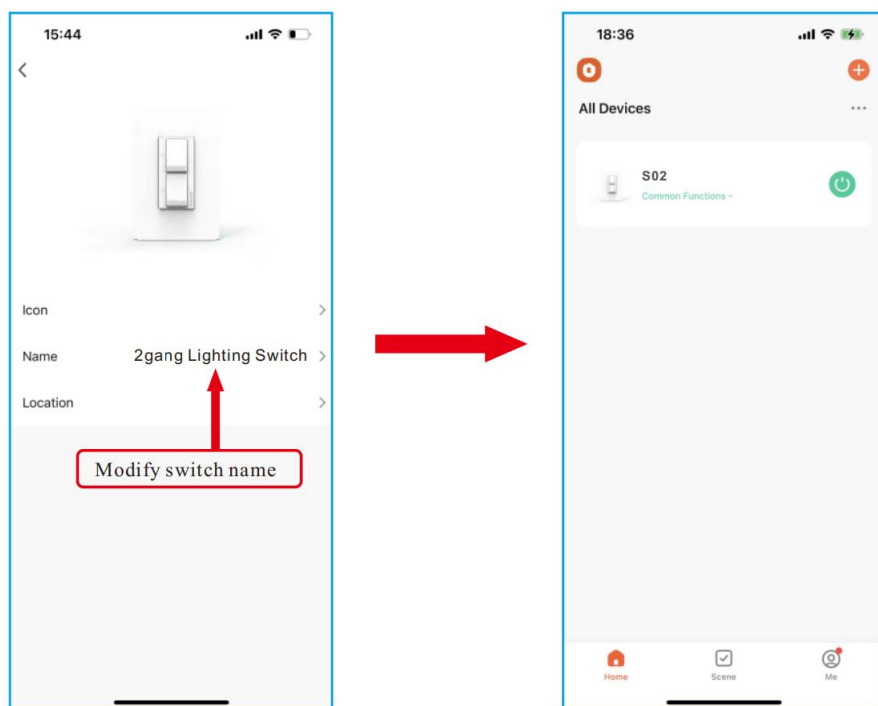
**Step.3**  
Next



**Step.4**  
Device added successfully you can modify device name.

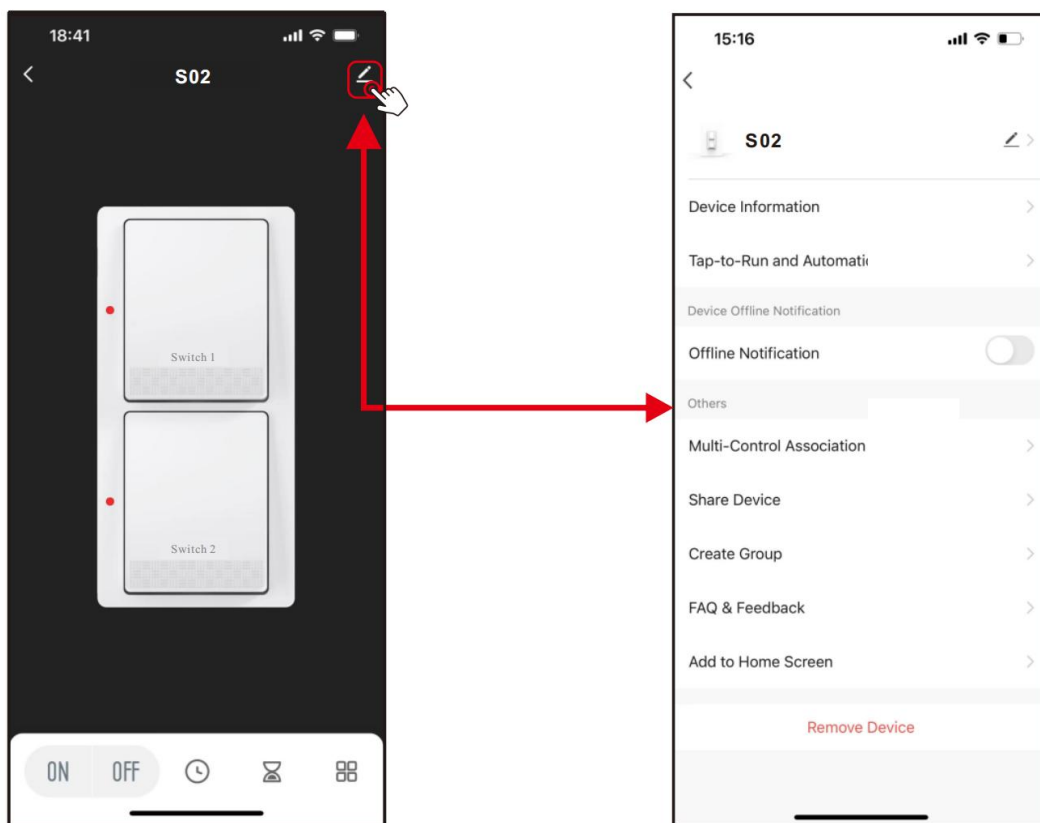
7

**Step D:** Give a name to the switch and tap "Completed". you will find the device you've named is shown on the app home page. Tap the device to enter the setting page.



8

After completing Part Two, you can now control the switch with MySmARTH APP on this setting page.



9

