



Hello, Smart Home



 **Bluetooth®**





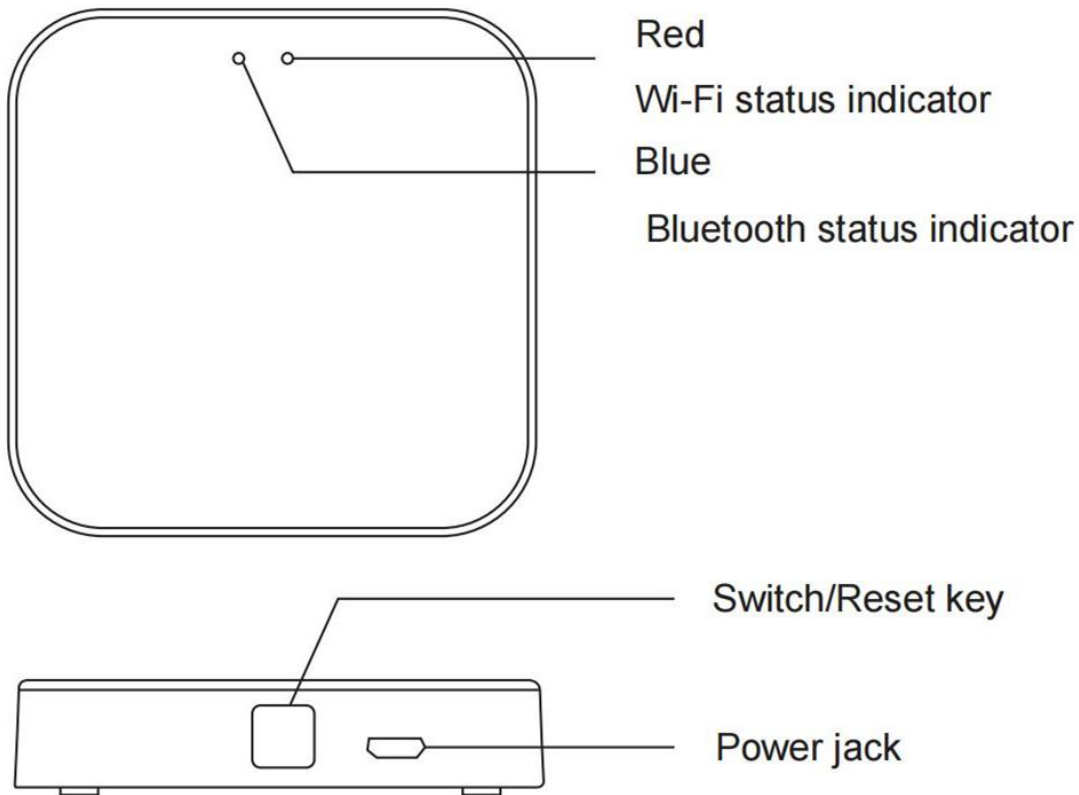
SMARTH
- Home Automation -



Smart Lock Gateway

Product Description

it is a Smart Lock Gateway . It consists of a highly integrated Wi-Fi module, low power-consuming Bluetooth module, and PCBA. It can be connected to the MySmartH app for device adding, reset, third-party control, and Bluetooth group control, meeting smart home requirements



Product Specifications

Product name	Smart Lock Gateway
Adapter output	5V $\overline{=}$ 1A
Working temperature	-10°C~55°C
Working humidity	10%~90% RH (no condensation)
Wireless technology	2.4G Wi-Fi
	Bluetooth
Dimensions	60X60X15mm
Net weight	33g

Packing List

- Smart Lock Gateway x 1
- Adapter x 1
- Data cable x 1
- User Manual x 1

This device complies with Part 15 of the FCC Rules. Operation is subject to the following two conditions:

- (1) This device may not cause harmful interference, and
- (2) This device must accept any interference received, including interference that may cause undesired operation.

Attention that changes or modification not expressly approved by the party responsible for compliance could void the user's authority to operate the equipment.

Note: This product has been tested and found to comply with the limits for a Class B digital device, pursuant to Part 15 of the FCC Rules. These limits are designed to provide reasonable protection against harmful interference in a residential installation. This product generates, uses, and can radiate radio frequency energy and, if not installed and used in accordance with the instructions, may cause harmful interference to radio communications. However, there is no guarantee that interference will not occur in a particular installation. If this product does cause harmful interference to radio or television reception, which can be determined by turning the equipment off and on, the user is encouraged to try to correct the interference by one or more of the following measures:

- Reorient or relocate the receiving antenna.
- Increase the separation between the equipment and receiver.
- Connect the equipment into an outlet on a circuit different from that to which the receiver is connected.

Consult the dealer or an experienced radio/TV technician for help.
This equipment should be installed and operated with a minimum distance 20cm between the radiator and your body

Install Free App

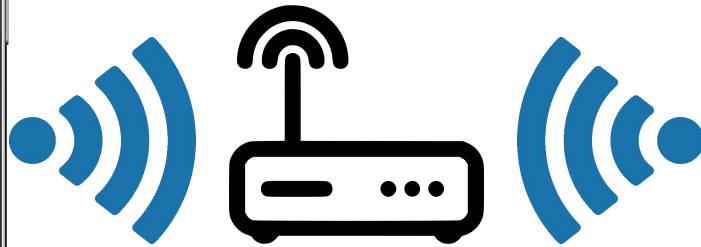
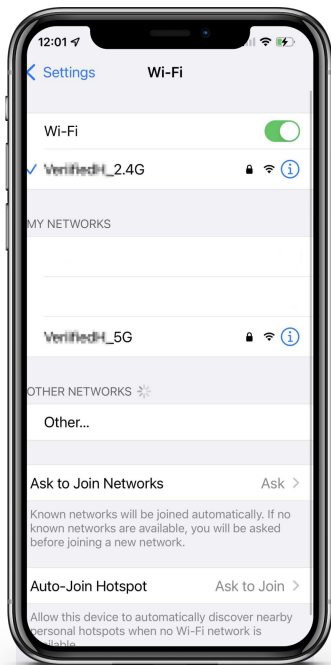
Download APP: scan the QR code below to download and install. Register and login: open the "MySmarth" APP to register and login according to the prompts.



Customer Support



1. Set Up Router



Please keep network available

2.4GHz

5GHz



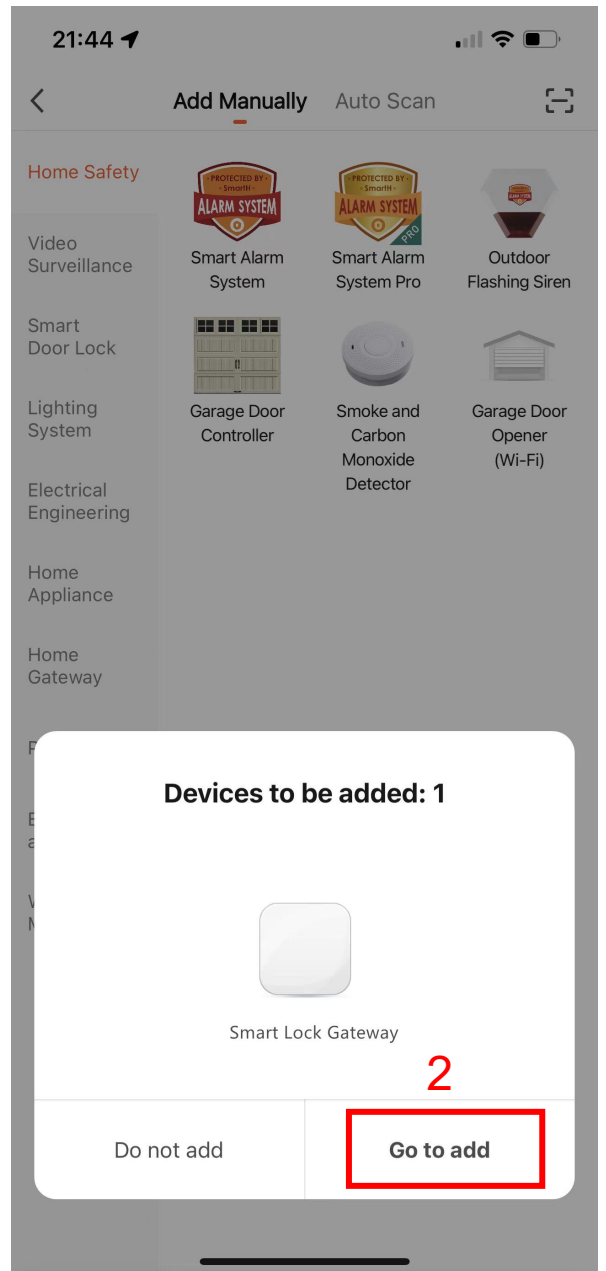
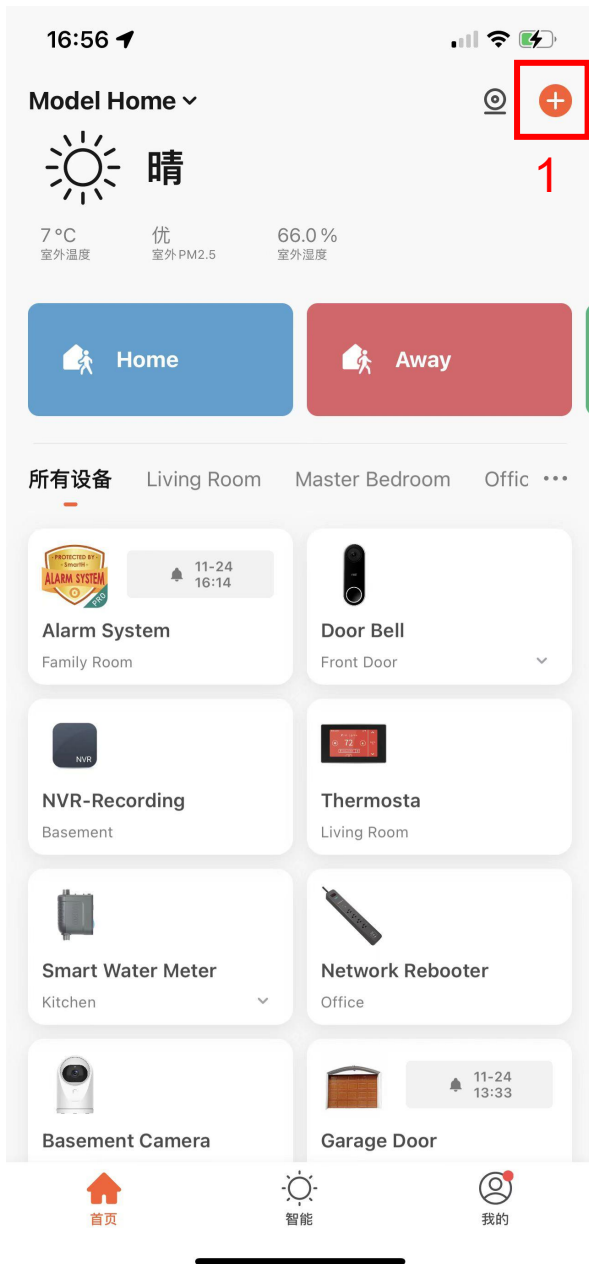
The router supports the 2.4GHz WiFi (doesn't support the 5GHz), and is connected to the WiFi network. Please set the parameters of the router before connecting the WiFi network, and record the SSID and password of your WiFi.

2. Turn On Your Smartphone's Bluetooth



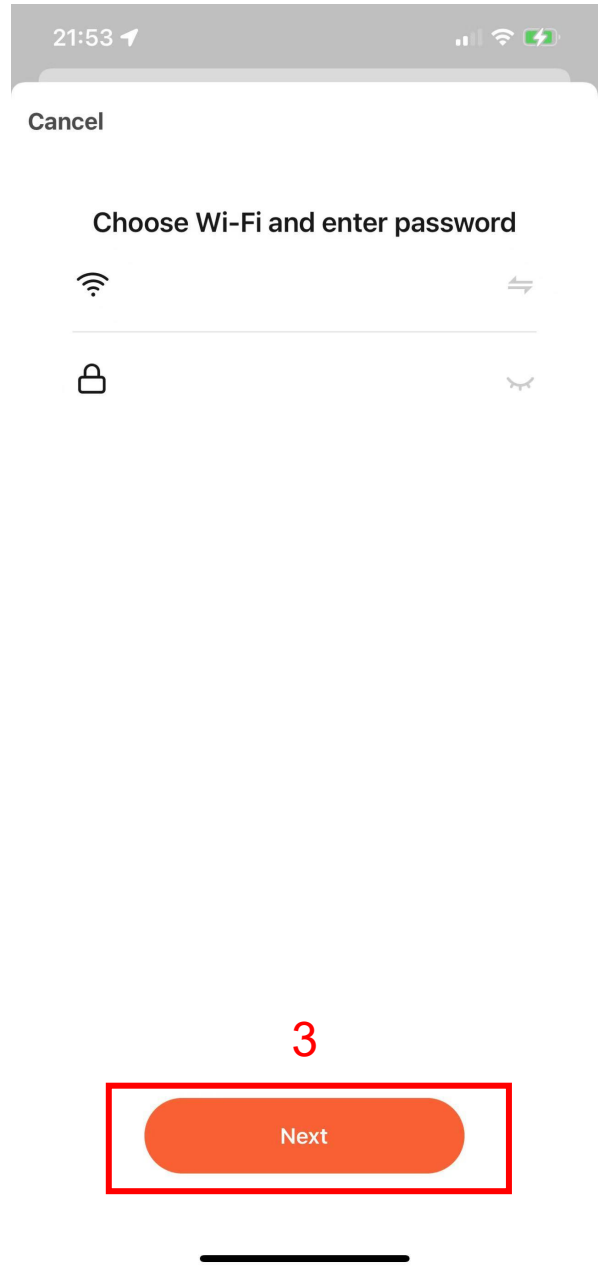
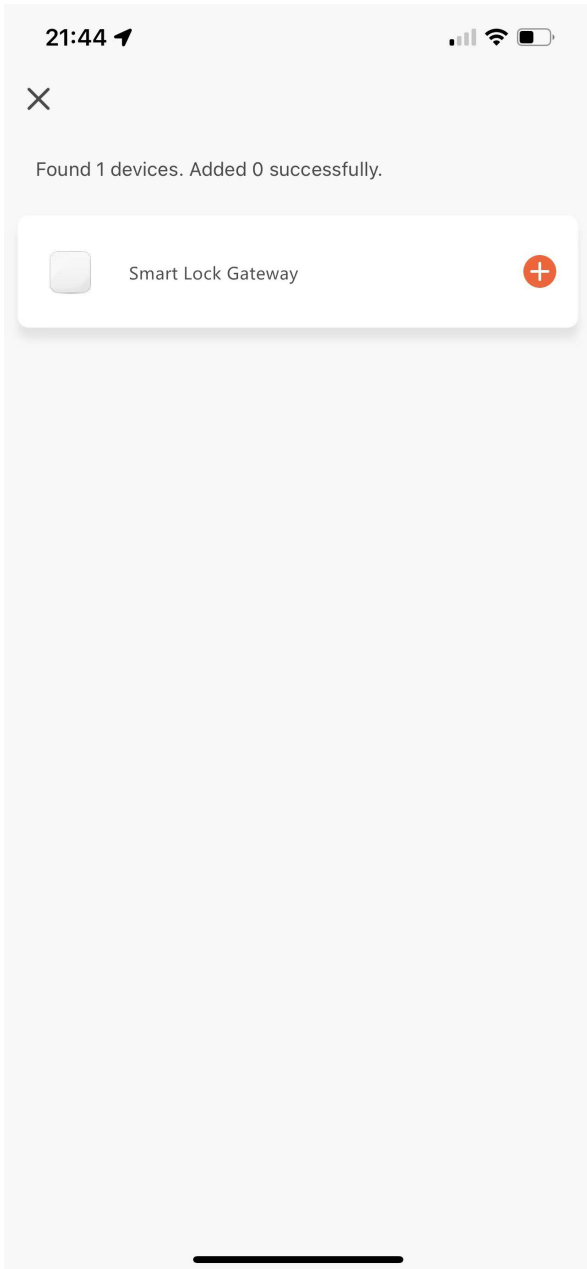
Turn on your smartphone's Bluetooth.

Connect the Smart Lock Gateway to MySmarth App

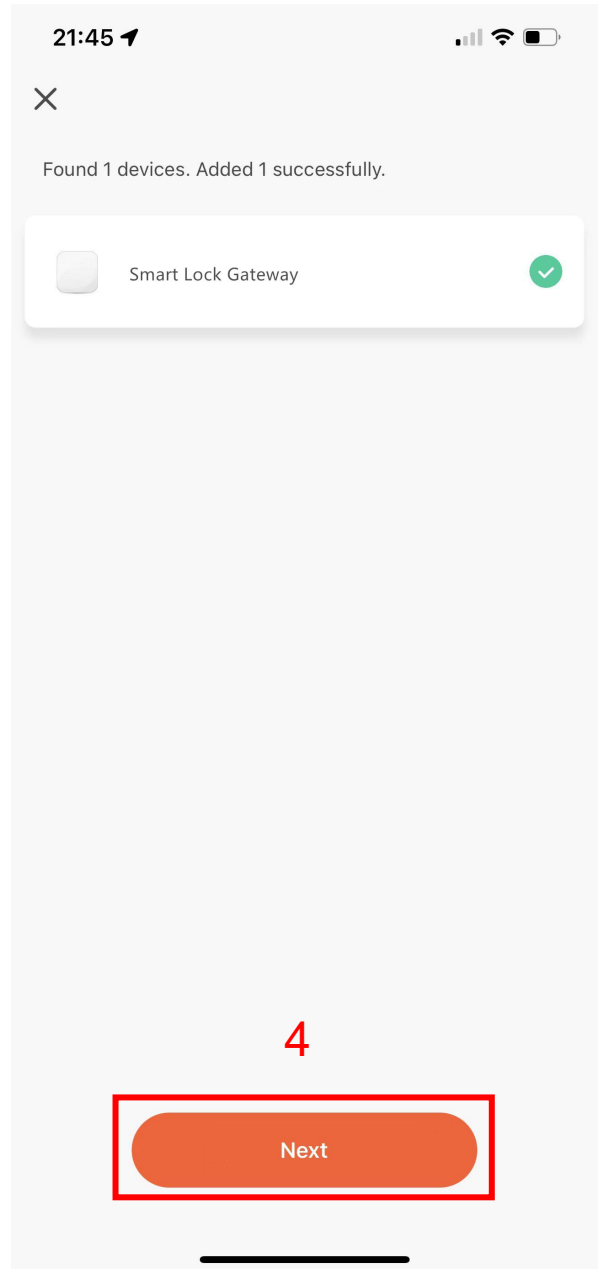
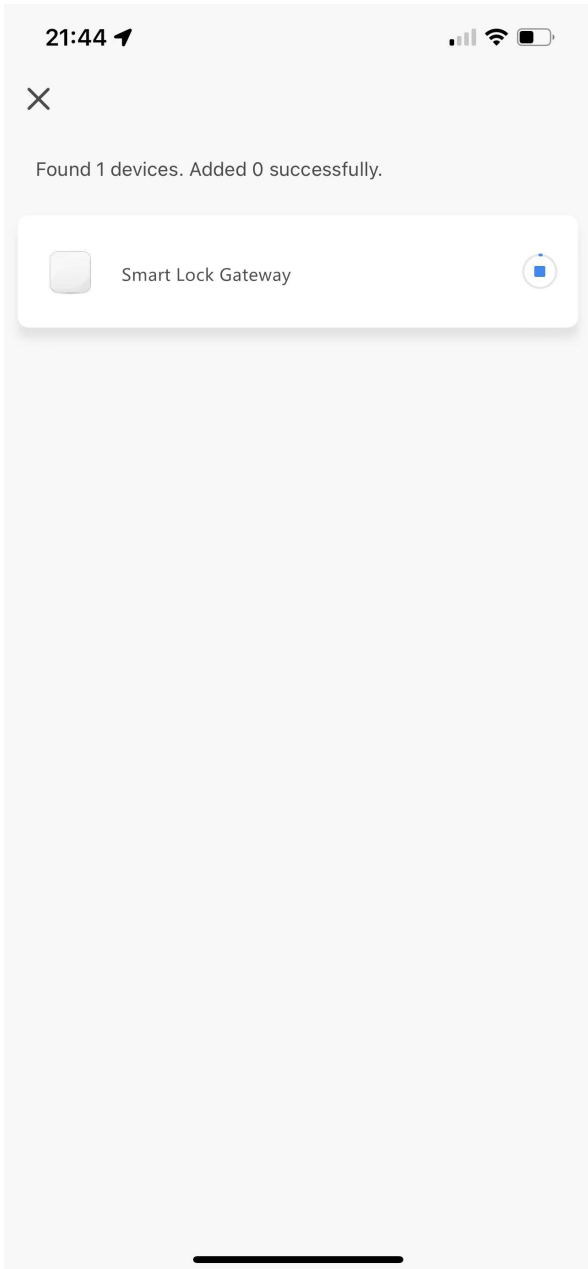


1. Launch the app and tap the Plus (+) in the top right corner to add a device.

2. Tap “Go to add”



3. Choose WiFi and enter password and Tap "Next"



4. Tap “Next”

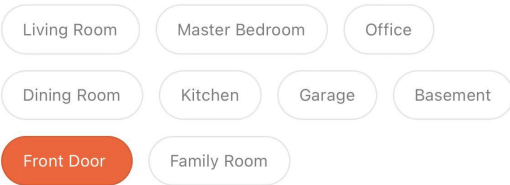
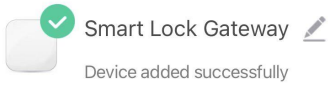
22:30 ↗



Done

5

Added.



22:31 ↗



Model Home ▾

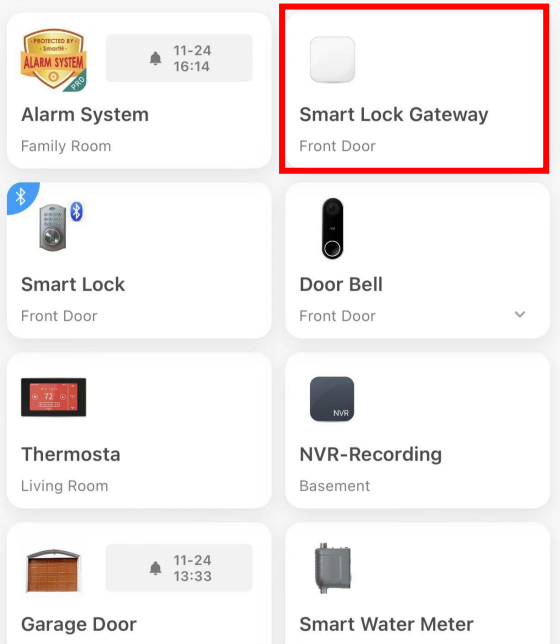


Overcast

7 °C Outdoor Temp. Excellent Outdoor PM2.5 72.0 % Outdoor Humidity



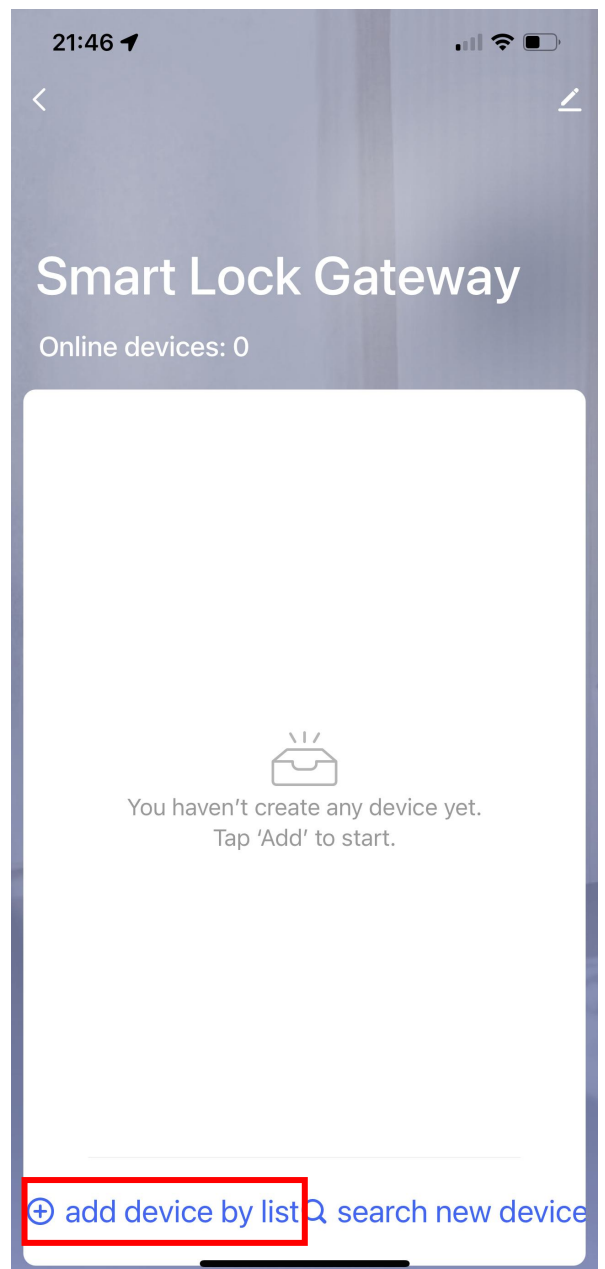
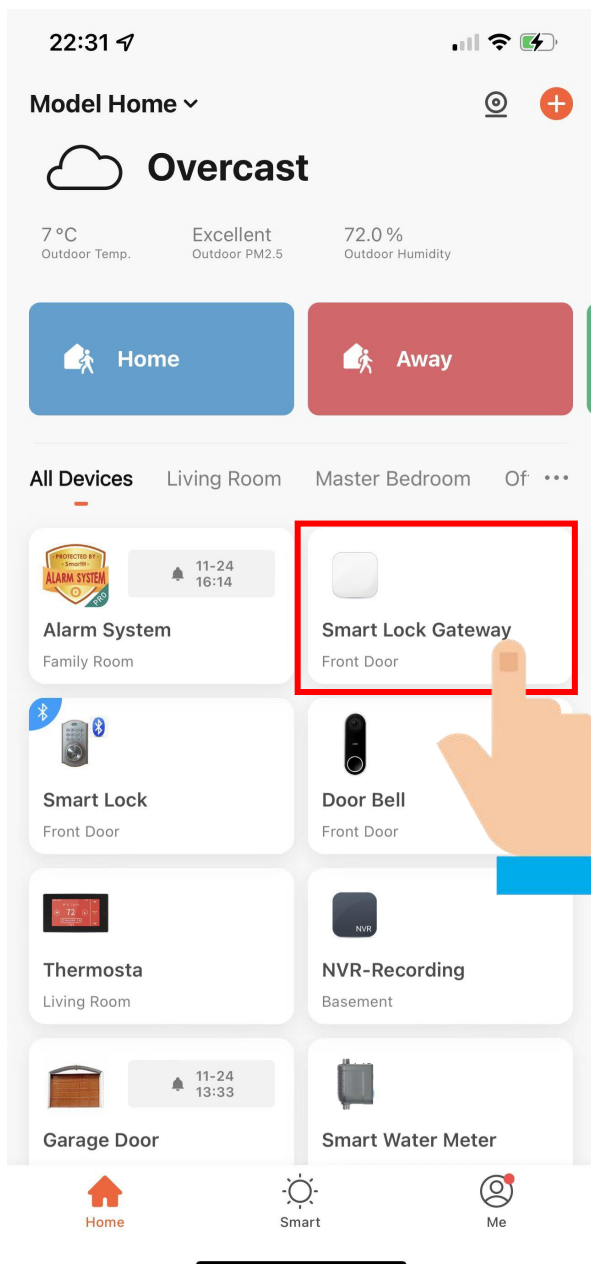
All Devices Living Room Master Bedroom Of ...



5. Tap “Done”

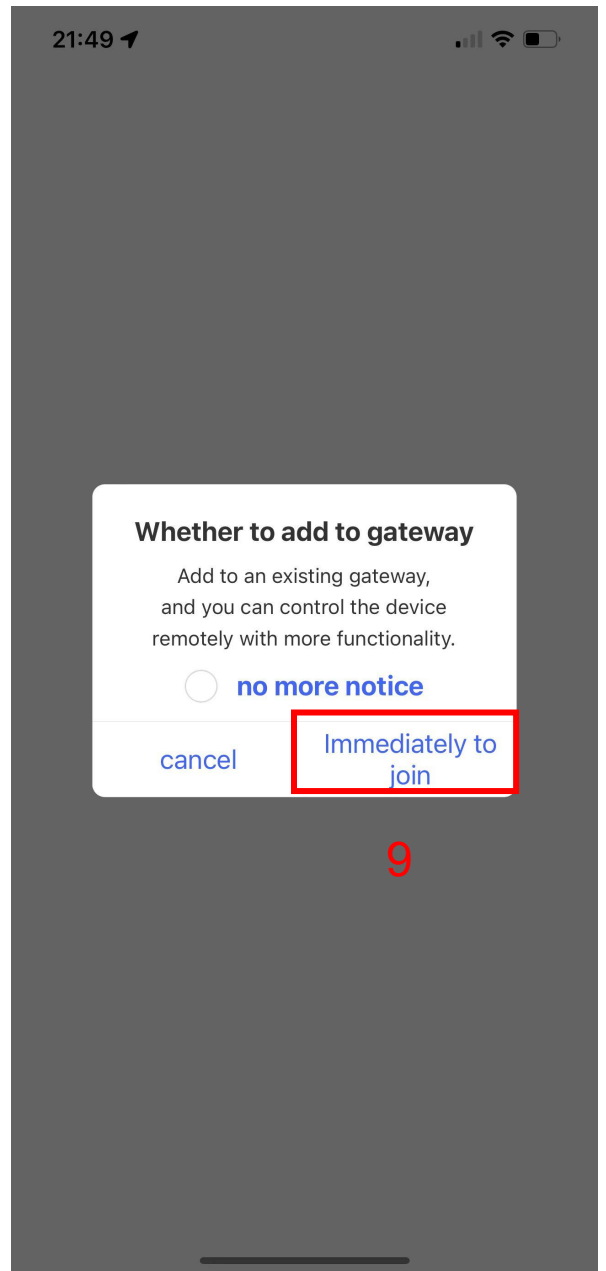
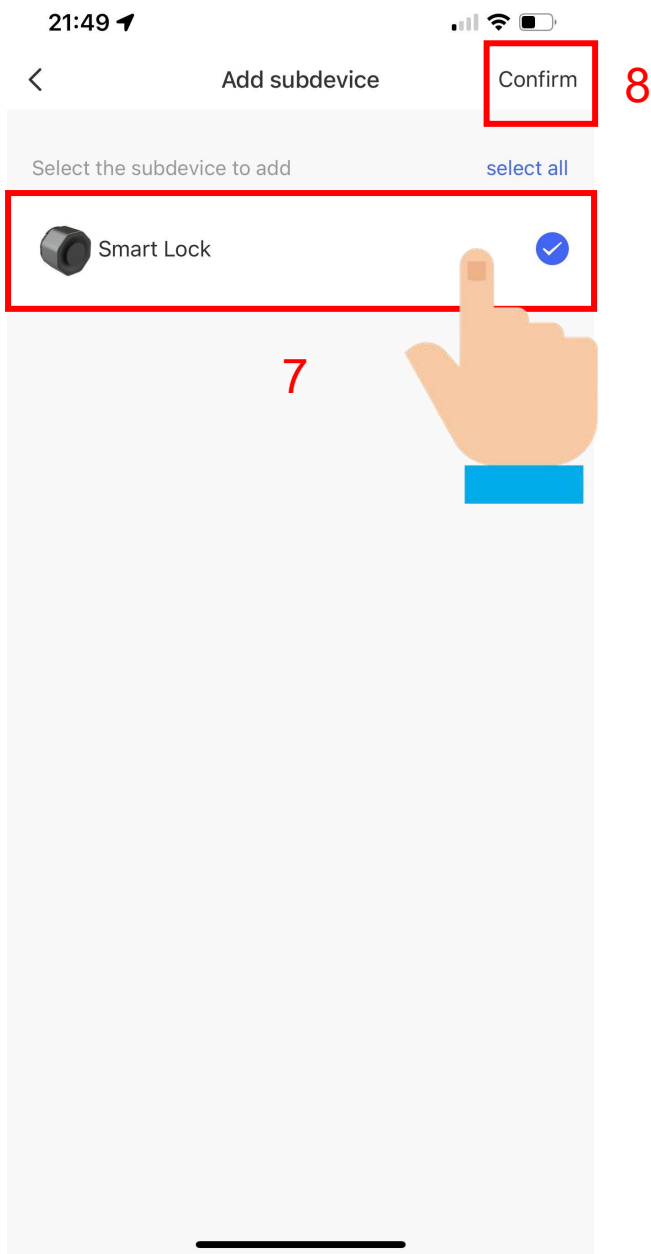
Now your Smart Lock Gateway is successfully added to MySmarth app.

How to add a smart lock to the gateway



6. Click “Smart Lock Gateway”

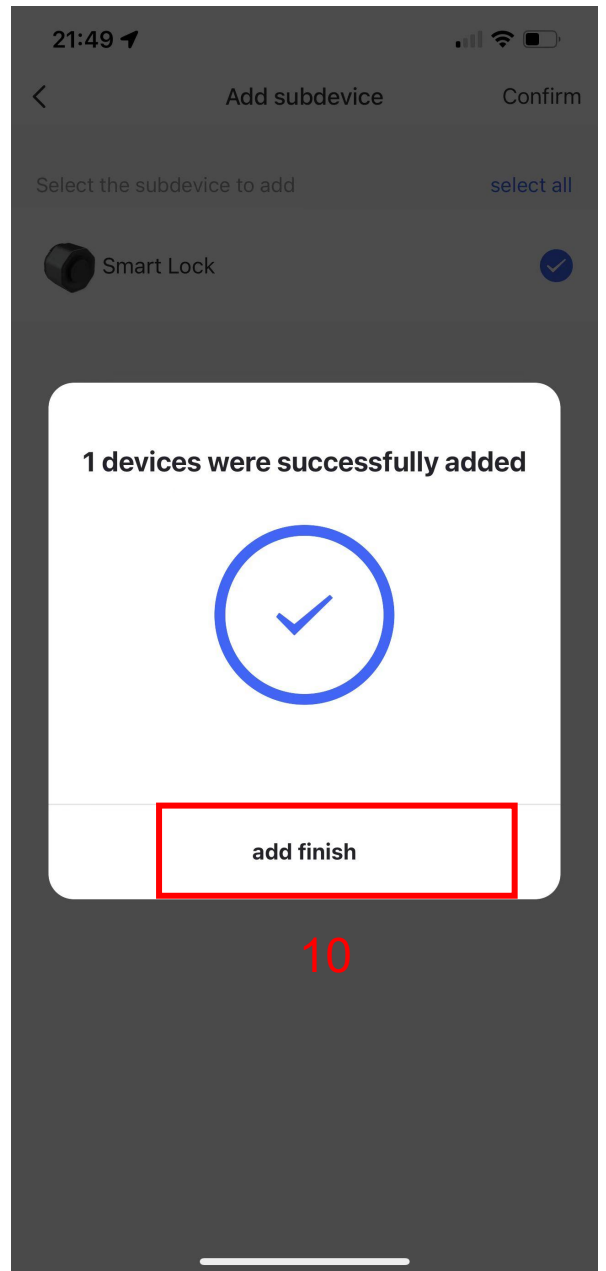
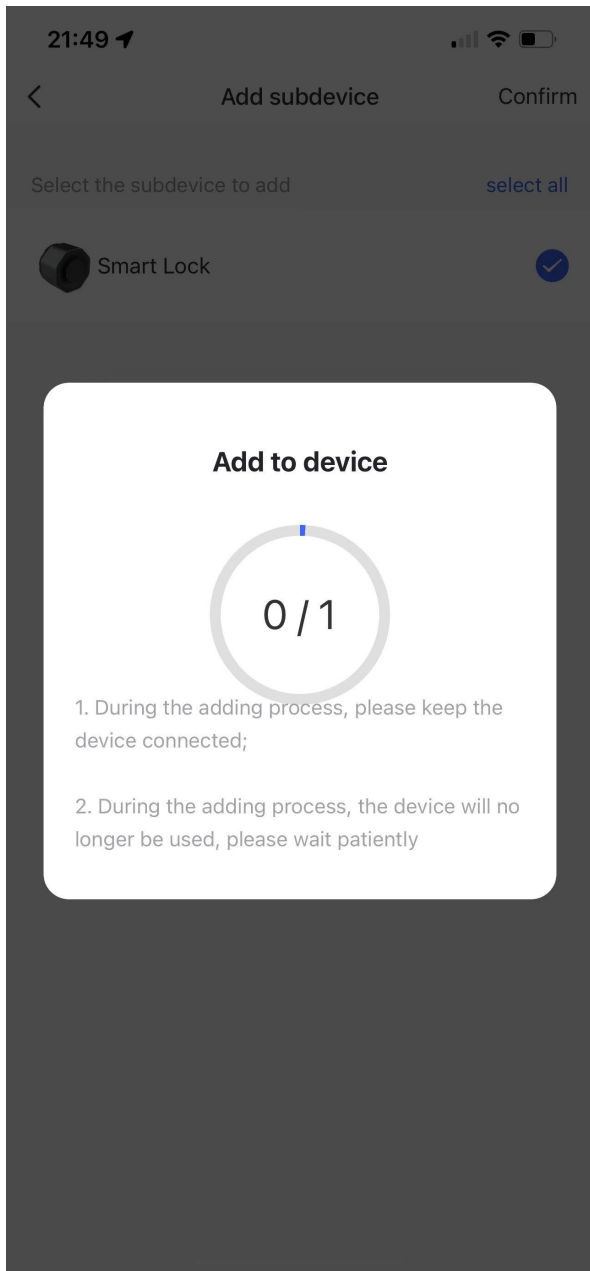
7. Tap “add device list”



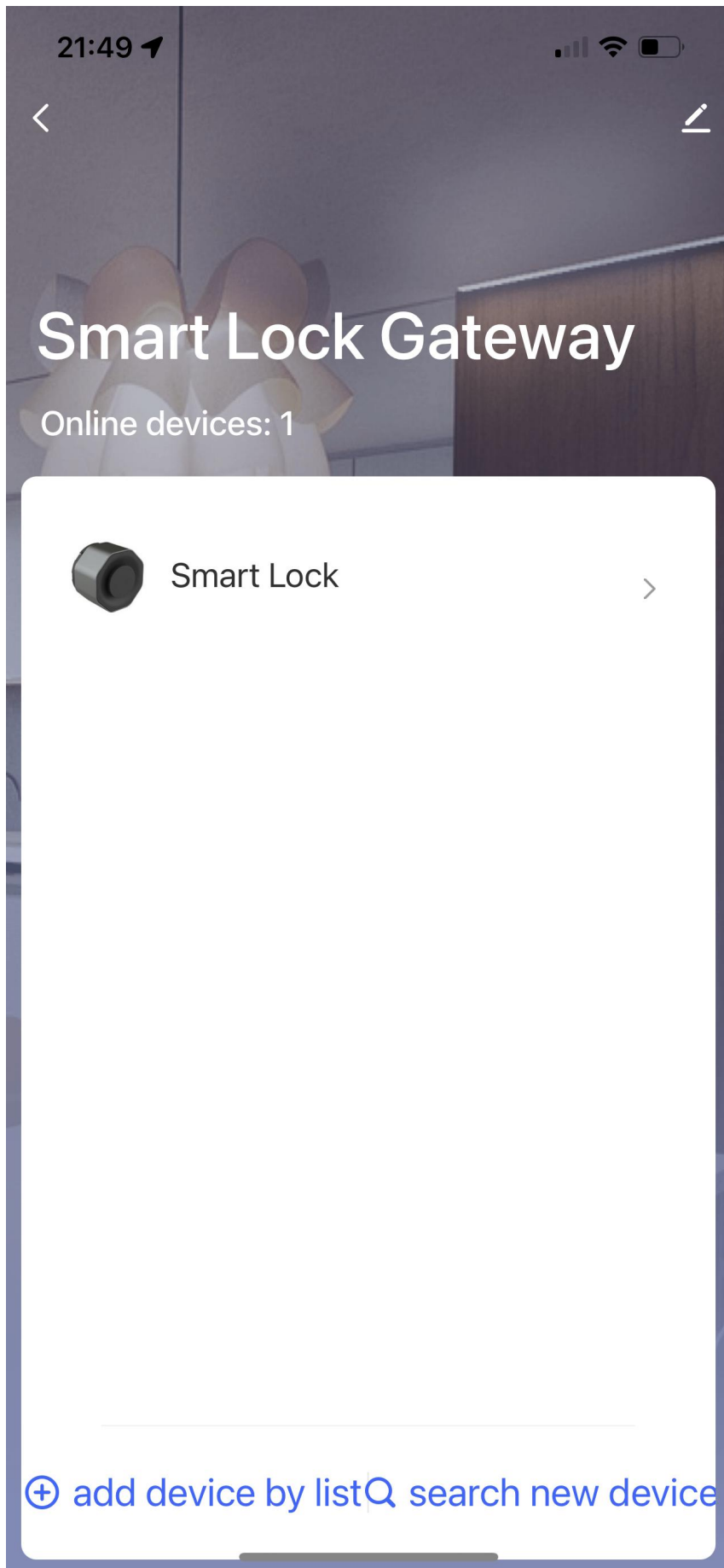
7. Select smart lock in the list

8. Tap "Confirm"

9. Tap "Immediately to Jion"



10. Tap "add finish"



REMOTE CONTROL -- Remotely control your door lock anywhere in the world even if you are away from home. Set, change, delete codes from anywhere anytime. Also, paired lock with Smart Lock Gateway, you could check door status, battery life and activity logs remotely.