

# BENITO COLLECTION

Designed as street furniture for all public and private, outdoor or indoor areas. All products in the collection complete and enrich any site at an economical price. All Benito items listed in this catalog are in stock and ready to ship. To view Benito's entire product line, please visit [www.benito.com](http://www.benito.com). Any of the items that are not listed here will require a minimum of 10-12 weeks for delivery.

## NEOBARCINO



## ECOSENS



## CITIZEN



## ESSEN



## TRAU



## VALLES



## OMEGA



## DADO



## DORIA



## DEPLOYEE



## DARA



# NEOBARCINO



NEOBARCINO provides a classic look with modern updates. With many options to choose from, the NEOBARCINO is a site solution that makes a statement.

Length (L)	Height (H)	Depth (D)	Seat Height	Item Code	Product Weight	Capacity
<b>ARMCHAIR</b>						
27 3/5"	31 1/2"	28"	16 7/10"	S/NBBEA.01	107.8 lbs	1
<b>STANDARD BENCH</b>						
70 9/10"	31 1/2"	28"	16 7/10"	S/NBBEA.03	136.4 lbs	3
<b>LONG BENCH+</b>						
118 1/10"	31 1/2"	28"	16 7/10"	S/NBBEA.04	209 lbs	4

## FRAME OPTION



### CAST IRON

Epoxi primer, Ferrus treatment  
Grey marteles powder coat



### CAST ALUMINUM+

Matte silver finish

May be bolted down.

## FINISH STYLE



### TECHNICAL WOOD

Maintenance free  
Made from 65% recycled wood and 35% recycled polymers  
\*Not available for long bench



### TROPICAL WOOD

Natural wood stain  
Treated with Lingus fungicide & insecticide, and water proofed  
May choose a different stain option:  
Blue (10 items minimum)+  
Green (10 items minimum)+



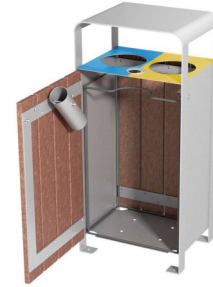
### FSC CERTIFIED TROPICAL WOOD+

10 items minimum

\* Lead time for these items will be 10-12 weeks

\*\*All stated dimensions are approximate

# ECOSENS



Ecosens products are ecological as they have been produced with 100% recycled plastic. The material does not absorb water and has a high resistance to harsh weather conditions.

Width (W)	Height (H)	Depth (D)	Seat Height	Item Code	Product Weight	Capacity
<b>BENCH</b>						
71"	33"	29"	17"	U362	173 lbs	3
<b>LITTER BIN</b>						
18"	38"	14"	N/A	U662	84 lbs	2x 20 Gal

## FRAME OPTION



**STEEL**  
Ferrus treatment  
Silver polyester powder coat finish

May be bolted down.

## FINISH STYLE



**RECYCLED PLASTIC**  
100% recycled poly planks

\* Lead time for these items will be 10-12 weeks

\*\*All stated dimensions are approximate

# CITIZEN



CITIZEN is a comfortable, contemporary bench with different finishes and compositions, created with a distinct identity and a vocation to share a city's public spaces in harmony with the people who live there.

Width (W)	Height (H)	Depth (D)	Seat Height	Item Code	Product Weight	Capacity
<b>BENCH</b>						
69"	32"	25 1/2"	18"	U301	130 lbs	3

## FRAME OPTION



### DUCTILE IRON

Epoxy primer coating, Ferrus treatment  
Marson polyester powder coat finish

May be bolted down.

## FINISH STYLE



### TROPICAL WOOD

Marson stain finish  
Treated with Lingus fungicide & insecticide, and water proofed

\* Lead time for these items will be 10-12 weeks

\*\* All stated dimensions are approximate

# ESSEN



ESSEN brings effortless style and an unique look with its symmetric laser cuts, allowing for minimal maintenance.

Length (L)	Height (H)	Depth (D)	Seat Height	Item Code	Product Weight	Capacity
<b>CHAIR</b>						
25 1/25"	31 7/10"	24 2/5"	17 1/2"	S/ESBEB.01	70.4 lbs	1
<b>STANDARD BENCH</b>						
65 2/5"	31 7/10"	24 2/5"	17 1/2"	S/ESBEB.03	123.2 lbs	3

## FINISH STYLE



**CAST IRON, SOLID STEEL**  
Epoxi primer, Ferrus treatment  
Steel grey powder coat

May be bolted down.

*\*\*All stated dimensions are approximate*

# TRAU



TRAU features a backless design allowing for seating access from virtually any direction, establishing it as a great gathering spot. Different color options are available to match your environment.

Length (L)	Height (H)	Depth (D)	Seat Height	Item Code	Product Weight	Capacity
78 7/10"	20 1/10"	24 4/5"	20 1/10"	S/TRBEB.03	116.6 lbs	3

## FINISH STYLE



### STEEL

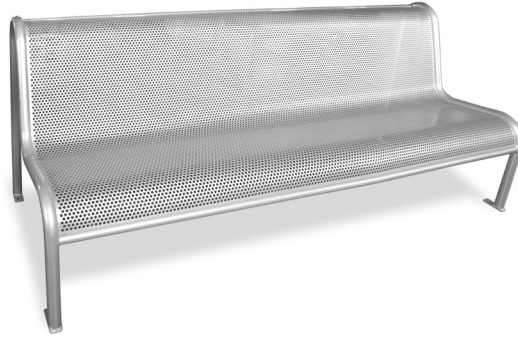
- Epoxi primer coating
- Ferrus treatment
- Legs: Steel grey powder coat
- Seat color options:
- Textured silver grey RAL 9006
- Textured bronze\*
- Textured blue\*
- Textured green\*

May be bolted down.

\*Lead time for these items will be 10-12 weeks

\*\*All stated dimensions are approximate

# VALLES



VALLES was designed with the end user in mind. Ergonomically pleasing, VALLES provides comfort and style.

Length (L)	Height (H)	Depth (D)	Seat Height	Item Code	Product Weight	Capacity
<b>STANDARD BENCH</b>						
81 3/10"	33 1/2"	29 9/10"	16 9/10"	S/VABEA.04	71.5 lbs	4
<b>BACKLESS</b>						
81 3/10"	18 1/2"	19 7/10"	17 7/10"	S/VABEB.04	46.5 lbs	4

## FINISH STYLE



### STEEL

Electrolyte zinc plated  
Silver RAL 9006 powder coat  
other RAL colors available (20 items minimum)\*

May be bolted down.

\*Lead time for these items will be 10-12 weeks

\*\*All stated dimensions are approximate

# OMEGA



OMEGA features a side frame locking system, allowing for several racks to be grouped together to create a bike parking facility.

Height (H)	Width (D)	Item Code	Product Weight	Bike Capacity
<b>OMEGA</b>				
27 4/10"	35 3/5"	S/OMBR	27.5 lbs	2

## FINISH STYLE



### STEEL

Electrolyte zinc plated  
Silver RAL 9006 polyester powder coat  
Brilliant polish available\*

May be bolted down.

\*Lead time for these items will be 10-12 weeks

\*\*All stated dimensions are approximate



# DADO



DADO has a 20" x 16" tray size on its top, making it the perfect litter bin for any food industry establishment.

Height (H)	Diameter (D)	Item Code	Product Weight	Volume
<b>DADO</b>				
45"	22"	S/DALB.25	65.5 lbs	35 1/2 gal

## FINISH STYLE



### STEEL

E-coated powder coat finish  
Available in A/Iron, A/Black, A/Bronze,, A/Cement & A/Dark Green.

*\*\*All stated dimensions are approximate*

# DORIA



DORIA is a large capacity bin with a central ashtray. It has three different waste inlets, each one marked with the universal color and pictogram to identify the waste compartments.

Height (H)	Depth (D)	Item Code	Product Weight	Volume
40"	24 1/2"	S/PLBEB.03	121 lbs	3 x 20 gal

## FRAME OPTION



### STEEL

Reinforced steel sheet in main body  
Stainless steel sheet in part of the cover

May be bolted down.

*\*\*All stated dimensions are approximate*

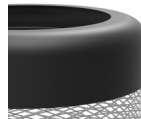
# DEPLOYEE



DEPLOYEE is a large-capacity litter bin that has an inner ring to hold the bag.

Height (H)	Diameter (D)	Item Code	Product Weight	Volume
35 1/2"	19"	U638	55 lbs	37 gal

## FINISH STYLE



### STEEL

3 coat Ferrus treatment and Epoxy primer  
Base and top: RAL 9005 black polyester powder paint  
RAL 9006 gray paint for the sheet steel plate

May be bolted down.

*\*\*All stated dimensions are approximate*

# DARA



DARA includes an ashtray in the body of the barrel, along with a ring to hold a trash bag liner. With 2 different sizes to match, DARA is a great compliment to any of our benches.

Height (H)	Diameter (D)	Item Code	Product Weight	Volume
<b>DARA</b>				
39 2/5"	21 1/10"	S/DALB.25	81 lbs	25 gal
<b>DARA PLUS</b>				
50 "	26"	S/DALB.51	114.4 lbs	51 gal

## FINISH STYLE



**STEEL**  
Epoxi primer, Ferrus treatment  
Steel grey powder coat

May be bolted down.

*\*\*All stated dimensions are approximate*