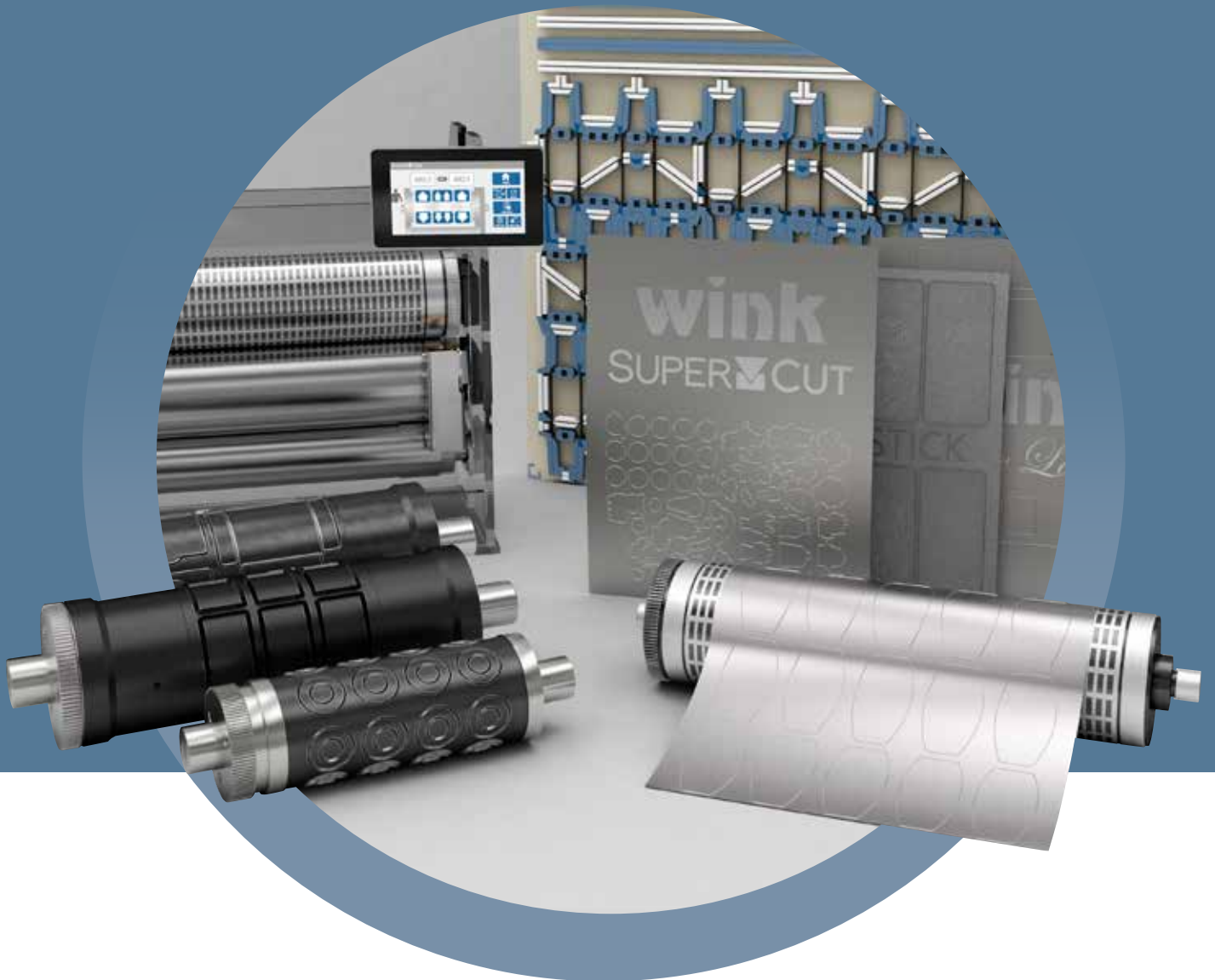


# YOU CUT, WE CARE.

Maximum precision for your success



Company and  
product information

[www.cetooling.co.uk](http://www.cetooling.co.uk)

**wink**<sup>®</sup>  
*You cut, we care.*



# Content

## ABOUT WINK

<b>Welcome to Wink</b> .....	4
<b>Milestones</b> .....	6
<b>Philosophy</b> .....	8

## DIE-CUTTING APPLICATIONS

<b>Labels</b> .....	12
<b>Special Converting</b> .....	14
<b>Sheets</b> .....	16
<b>Packaging</b> .....	18
<b>Envelopes</b> .....	20

## OUR PRODUCTS

<b>Flexible Dies</b> .....	24
<b>Cylinders &amp; Cutting Units</b> .....	30
<b>Flat Bed Tools</b> .....	40

<b>WINK WORLDWIDE</b> .....	46
-----------------------------	----



# WELCOME TO WINK.

We are one of the world's leading manufacturers of cutting tools for the graphic industry. All over the world, renowned manufacturers of labels, packaging and many other die-cut products rely on the quality and outstanding service provided by Wink.

„You cut, we care“ - this is more than just a claim, it is the core of the Wink philosophy. More than 400 dedicated employees ensure that our customers convert without worries and produce efficiently.



“

Whether at home, in the car, supermarket, office or factory – we are surrounded by products, which acquire their final shape through die-cutting. Depending on the sector and material involved, we have to meet very different requirements, when it comes to specifications for our cutting tools. It is this diversity that makes our work so interesting and motivating. From kiss-cutting to cutting-through, perforating, creasing and embossing – we tailor our tools perfectly to your individual needs.

# MILESTONES



## 1989

....

Foundation of the Wink company (Wilfried Jeurink KG) in Neuenhaus. Start of production of flexible dies.

## 2006

....

Company sold to Ferdinand Oetker, Dr. Alfred Oetker, Günther Skrzypek and Alan der Natris. Change of name to „Wink Stanzwerkzeuge GmbH und Co. KG“.

## 2007

....

Acquisition of cutting tool manufacturer DEV A/S (now Wink North A/S).  
Foundation of distribution company Wink Italia s.r.l. (now Wink South Europe s.r.l.).



The roots of the company go back to the 60s.

There the company „Bandstahlschnitte Jeurink“ was founded, which later became Wink.

## 2012

....

Expansion of production area in Neuenhaus by 1,400 sqm. Foundation of distribution company Wink US, LLC, in Charlotte, North Carolina.

## 2014

....

Acquisition of FST GmbH in Simmerath. The site becomes Wink's „Competence Center“ for cylinders.

## 2019

....

Acquisition of the Jeurink Group with the locations „Bandstahlschnitte Jeurink“ in Veldhausen and „ImaPack Stanzformen“ in Munich.

## OUR PROMISE: YOU CUT, WE CARE.

.....

We make sure that you can produce without worries.

**You cut, we care:** four short words for a lot of service and significant relief.

### 1 QUALITY

We can provide you with a comprehensive range of premium quality cutting tools, which are characterised by their extremely high precision and durability. State-of-the-art technology and reliable checks through-out the production process enable us to guarantee consistently high DIN ISO 9001-certified quality standards. Our highly efficient processes ensure the fastest production times and maximum delivery reliability.

### 2 COMMUNICATION

We help you to respond flexibly to your customers' needs. It is quick and easy to get in touch with your personal, technically trained contact persons. Our friendly and helpful team will rapidly provide you with the necessary information and help you put your projects into practice.

### 3 SOLUTIONS

We will help you optimise your production processes, by defining the perfect parameters for your cutting tools in order to prevent time-consuming problems before they occur. This enables you to take advantage of our long-term experience and comprehensive machine/materials database. At the same time, we work continuously to further develop our tools and help you get new projects off the ground.





# APPLICATIONS





POWERCUT

QUALITY GUARANTEED  
BIG SALE  
ORIGINAL PRODUCT

## Labels



Many of our tools are used for die-cutting self-adhesive labels, which are part of our everyday life. They can be found, for example, on products in the supermarket, electrical devices in the home, pharmaceuticals in hospitals, packages in logistics centres or folders in offices. Our tools, which are individually manufactured to customer specifications, are accordingly wide-ranging.





## VARIATIONS AND FUNCTIONS

Labels are information carriers, they provide information about content, price, origin, manufacturer, risks etc. Furthermore, brands present themselves through the appearance of the label: shape, design and material make the difference at the „point of sale“. Meanwhile, there are countless variations with the widest range of applications: blank labels for variable printing, labels for product identification and advertising or labels with special functions.



## PRODUCTION

Adhesive labels are usually produced from roll-to-roll in narrow web printing. The most commonly tools used are flexible dies which are mounted on magnetic cylinders. Solid dies are also used for some rotary applications, whereas steel rule dies are used in the traditional stamping process. After die-cutting, the stripped face material is disposed of while the labels remain on the liner and are rolled up.

## Special Converting

.....

In this segment we have bundled special die-cutting applications that are even more manifold in terms of production and functions than the „Labels“ segment. From the Asia noodle snack box to the heat plaster and the sealing ring for engines: many products can be converted and processed rotatively with maximum efficiency.





## EXTREME RANGE

The variety of applications in the special converting sector is enormous. Besides film and paper, many other flexible materials can be found in this sector, such as cardboard, plastics, non-wovens, foams or thin metals.



## PRODUCTION

In the special converting industry, the variety of applications is also reflected in the manufacturing processes. Exclusively developed or modified narrow web machines are most commonly used. From our product portfolio, solid dies are primarily used to convert difficult to cut and particularly thick materials. Our tools meet the highest demands in terms of filigree, dimensional accuracy and durability. We are also happy to assist you in the development and implementation of individual rotary die cutting solutions.



## Sheets

.....

In the „Sheets“ application area, we supply tools for inmould labels and for sheet-fed printing products that are produced in offset and to a growing extent also in digital printing.

For die-cutting these printed materials, special flexible dies are required which are either integrated „inline“ into the printing machine or used „offline“ in finishing machines.







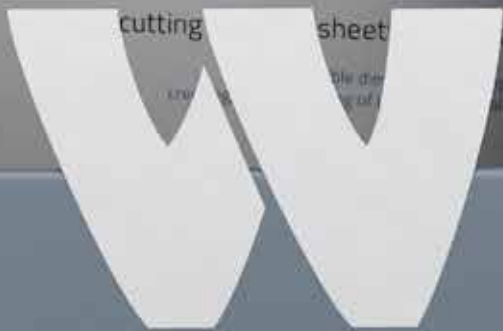
## VARIETY

Sheet-fed printing is used to produce high-quality printed goods in a wide variety of formats. Typical applications include sticker sheets, coupons, presentation folders, business cards, advertising supplements and much more. With the help of our tools, these products are shaped and finished by die-cutting, perforating and creasing.

The inmould labelling market has been growing continuously for years. The printed and die-cut label is melted with the actual packaging in a mould. Inmould labels allow for attractive, full-surface designs of packaging that are also resistant to adverse external influences. They are found particularly in the food sector, but also on many other consumer goods - from detergents to paint buckets.

*You cut, we care.*

cutting sheet



**SHEETS**

**WELCOME  
PLEASE  
KNOCK**

## Packaging

.....

Packaging, folding boxes and other cardboard products are an essential part of our everyday life. For numerous goods of daily use, cardboard packaging provides protection, storability and an attractive shelf appeal. For efficient production, dimensionally stable steel rule dies are used above all for die-cutting, creasing and embossing.





## VARIATIONS AND FUNCTIONS

The primary market for folding cartons and similar cardboard packaging is the food industry. However, individual packaging solutions are also used in many other areas such as pharmaceuticals, household products, personal care and cosmetics. There are no limits to the variety of shapes and functions.



## PRODUCTION

Folding cartons and related products are usually made from a wide variety of cardboard, sometimes plastic or non-woven materials are also used. Printing and finishing are typically done on sheet-fed offset presses, but other printing processes are also used - increasingly also digital printing. The printed sheets are then further processed at high speed. This is where our cutting dies come into play, which ensure high-precision contour cutting, creasing and scoring.



## Envelopes



A daily glance into the mailbox reveals envelopes and mailing bags in countless formats and made of the most diverse materials. Due to the increasing online trade and movement of goods, the number of large format bags is also increasing. Each envelope product has its own specific requirements in terms of production and die-cutting tools.





## VARIETY

Envelope products can be roughly divided into the categories envelope, mailing bag or folding bag. Apart from numerous standardized formats, envelope products can be modified in many ways. Already with the raw material you are faced with the choice of countless paper variants and thicknesses. Special plastics can even be used for maximum tear resistance. Further design possibilities are offered by printing, optional closures, various linings or different windowings.

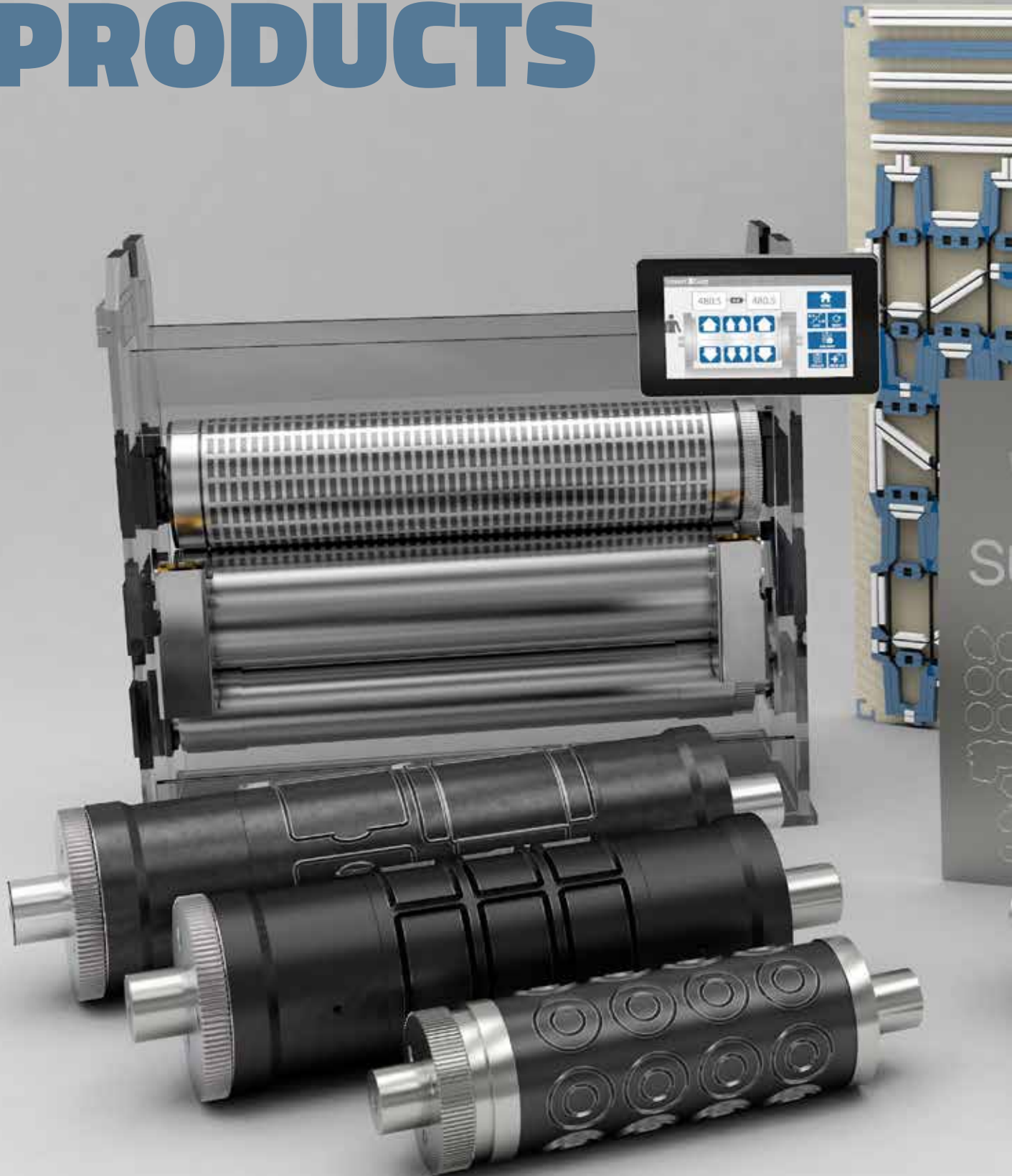


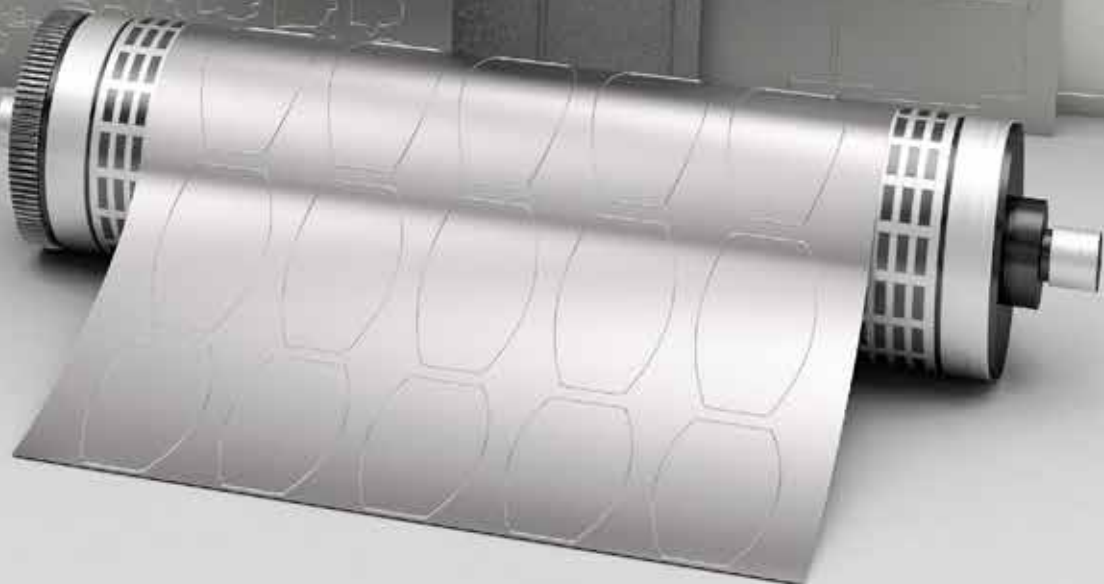
## PRODUCTION

The common manufacturing process for long runs in the envelope sector is reel production, but sheets are also processed. After printing the inside and outside of the envelope, the envelope contour is die-cut and a possible window film is glued in. Then the side flaps and the sealing flap rubber coating are applied. Profiles, window dies and separators are usually required for production. For formats that are die-cut in one step, All in one dies are used. The foil knives are mounted on special magnetic cylinders, which ensures a fast format change.

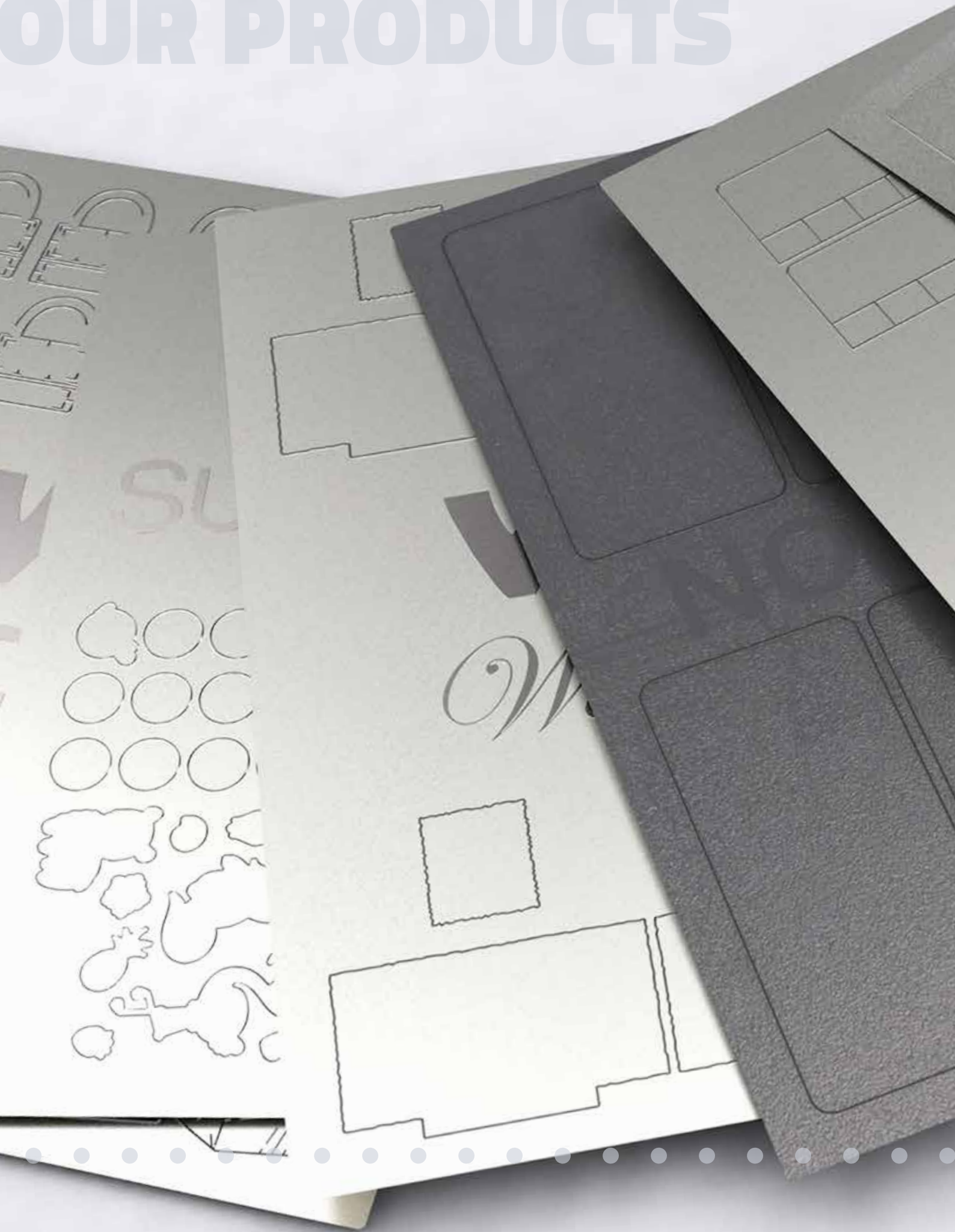


# OUR PRODUCTS





# OUR PRODUCTS





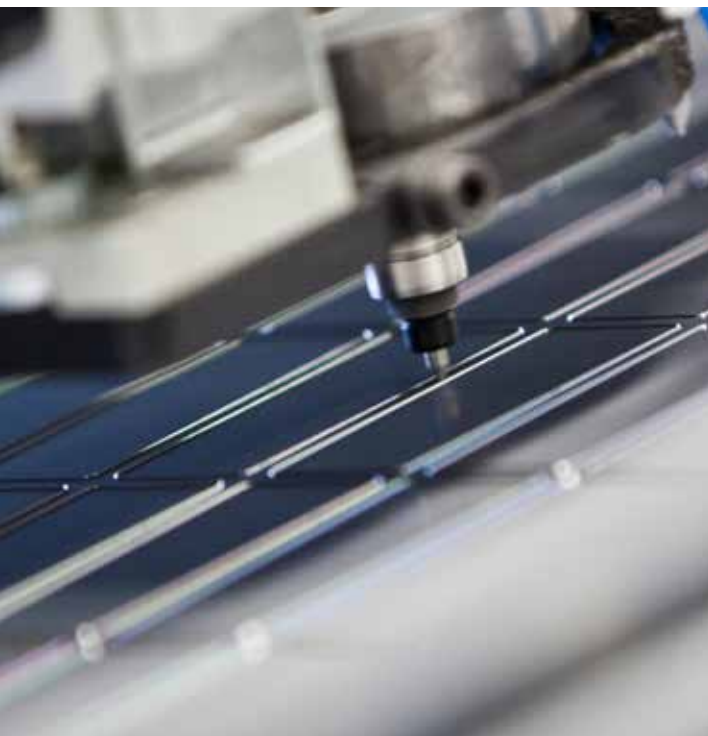


# • • • FLEXIBLE DIES • • •

## Labels

.....

Our high quality SuperCut flexible dies are produced using state-of-the-art CNC technology and are just as varied as the labelling sector and its applications. We guarantee minimum tolerances, maximum durability and therefore optimum cost-effectiveness. Every die is a unique item, adapted with microscopic precision to your special application. Because we know what die-cutting is all about.



### EFFICIENT & VERSATILE

Our flexible dies can be used both flat (on magnetic flat bed bases) and rotary (on magnetic cylinders). The different applications can also be combined in one tool if required:

- Kiss-cutting
- Through-cutting
- Creasing
- Perforations
- Micro-perforations

**SUPER**  **CUT**



**MAXIMUM  
PRECISION**



**PERFECT  
DIE-CUTTING RESULTS**



**LONG  
RUNNING TIMES**

## MAXIMUM PERFORMANCE

In the basic version, our SuperCut flexible dies already impress with very high performance. For certain applications, however, it makes sense to further increase the tool life by applying special hardening treatments, such as laser hardening or MCR coating. There are also materials that can be converted more efficiently with special non-stick coatings on the die-cutting tool.

### LASER



### MCR

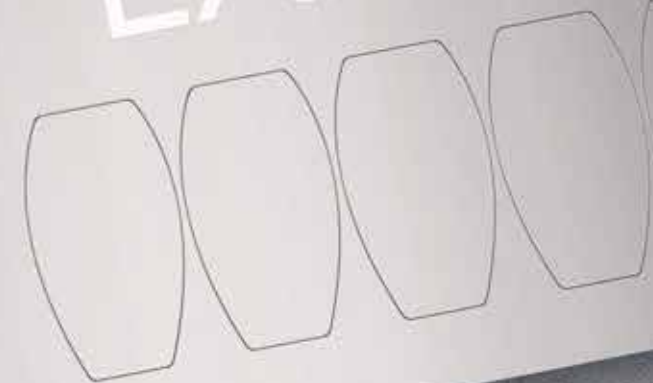


### NON-STICK



WINK  
PIGGYBACK

WINK  
LASER



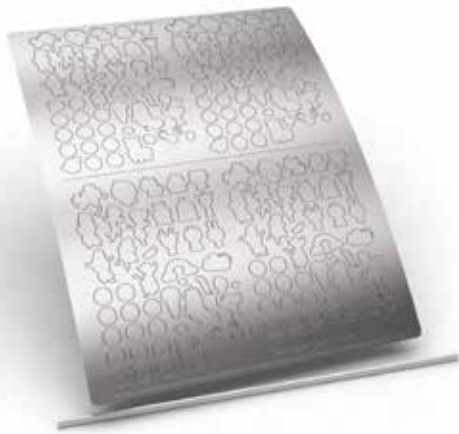
WINK  
Wine Labels

NON-STICK

## Sheets



Whether sticker sheets, presentation folders or inmould labels: our flexible dies can be used in almost all machines for any print format - simply, quickly and with maximum precision. The innovative technology ensures efficient inline and offline production for kiss-cutting, through-cutting, perforating and creasing.



### SHEET-FED OFFSET



For inline die-cutting in sheet-fed offset presses, the flexible die is mounted in a free printing or coating unit instead of the blanket. The clamping system can be either quick clamping rails, adapter rails or a grooved gripper edge (for clamping in conventional rails). The anvil cylinder is protected with a special protector plate.



### INMOULD LABELS (IML)



Rotary die-cutting of inmould labels allows higher process speeds and many other advantages - inline and offline. With minimal production tolerances and special cutting line geometries, the high-precision die-cutting tools from Wink offer optimum conditions for die-cutting inmould labels with maximum efficiency.



### DIGITAL FINISHING



Finishing machines are often used for shorter runs in the digital printing sector. The die-cutting and perforating applications can be combined on one flexible die. For additional creasing applications a pair of tools is used. Due to the easy application with highest register accuracy, set-up times are considerably shorter and production costs are optimized.

# Envelopes



State-of-the-art engraving and laser technologies empowered us to develop a new generation of dies which enable you to die-cut envelopes even more efficiently. Our EnveloCut tools excel in highest precision and durability making them the perfect choice even for the most challenging applications.

EnveloCut envelope dies are available as window dies, profiles and separators with variable geometry. They are suitable for all common machine types and magnetic systems and are available with various types of lay-on with a bent edge or pin system. Our envelope dies are manufactured using the most up-to-date CNC technology to guarantee minimum tolerances and extremely high longevity.



## EnveloCut

### PROVEN QUALITY AND FAST DELIVERY

The multifaceted range of applications makes the greatest demands on flexible die production. That is why only the most up-to-date machines are employed for exposure, etching, engraving and finishing the dies in our manufacturing.

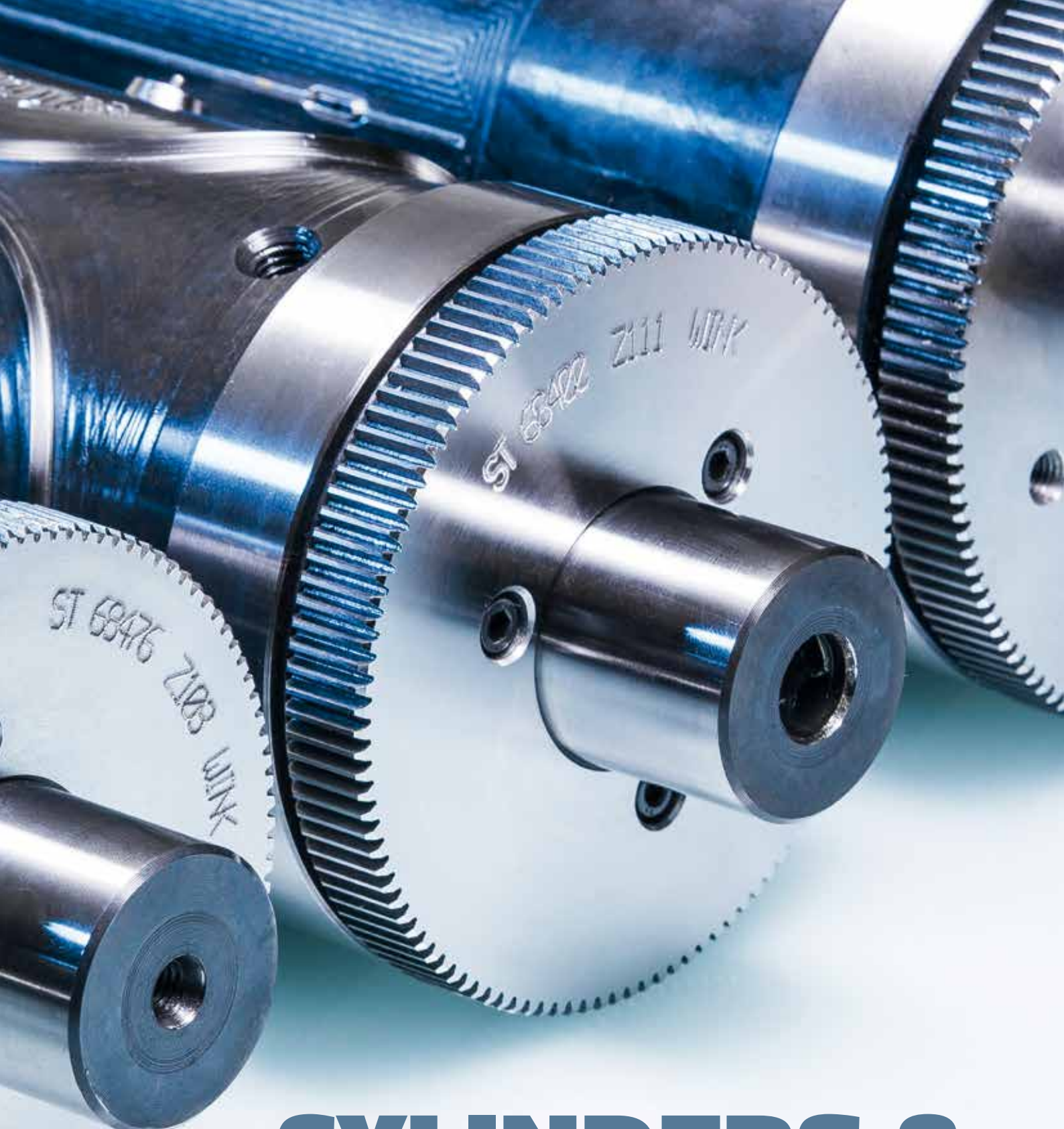
Added to this is the wealth of experience and the dexterity of our competent team. Our DIN ISO 9001-certified quality management guarantees a consistently high quality as well as the fastest delivery times.



# OUR PRODUCTS



ST 58393 Z100 WINK



# CYLINDERS & CUTTING UNITS

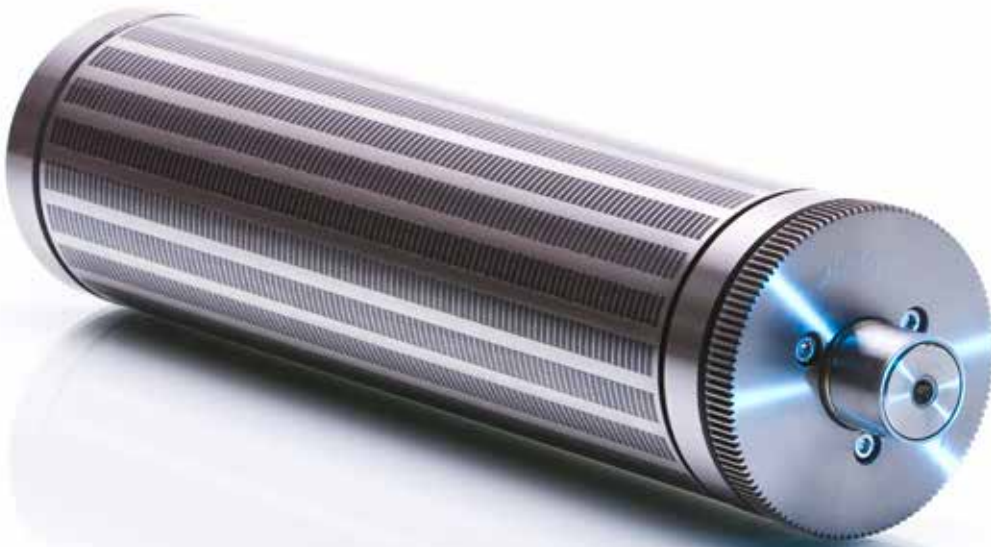
## Magnetic cylinders

.....

Perfect die-cutting results not only require an accurate flexible die. True-to-size magnetic carriers and anvil cylinders are equally vital. Only if all components are in flawless condition and perfectly adjusted, you will achieve premium die-cutting results.

Wink provides you with all you need - with outstanding quality and fastest delivery times. We use the latest high-tech equipment to manufacture high quality magnetic cylinders in all standard dimensions, as well as special formats. Our OptiMag cylinders stand out for their maximum precision, optimal adhesion and high durability.

OPTIMAG



MINIMUM  
TOLERANCES



OPTIMUM  
ADHESION



HIGH  
DURABILITY



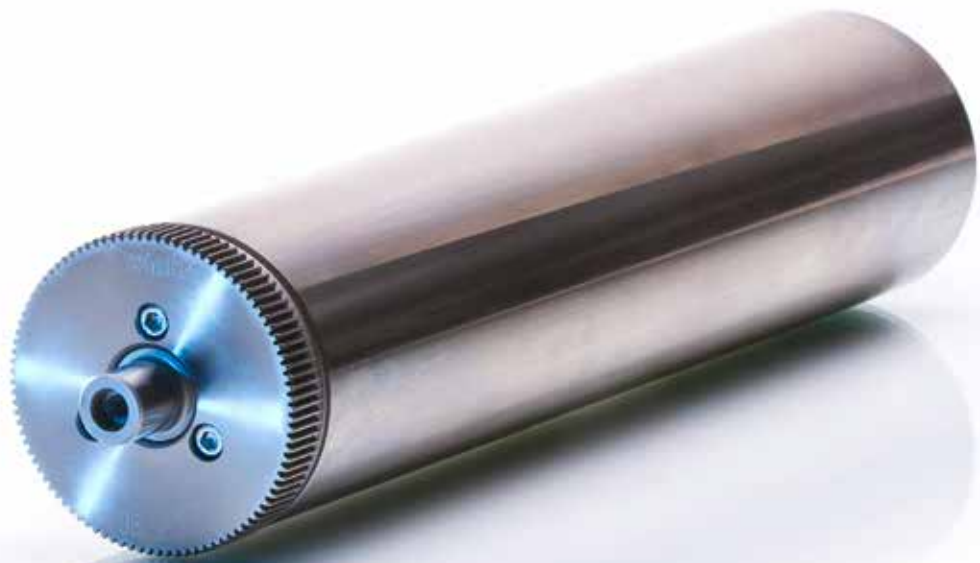




# Anvil cylinders



Force creates counterforce, therefore every rotary die-cutting tool needs an appropriate counterpart to bring out the die-cutting pressure in an optimal way. In combination with our SuperCut flexible dies and OptiMag magnetic cylinders, our anvil cylinders ensure excellent cutting results. They are characterised by their exemplary hardness and run-out accuracy. Thanks to its precision and ultra-fine surface condition, every Wink anvil cylinder is a quality tool that guarantees success.



# CYLINDERS



## POWERCUT® Solid dies



For many applications in narrow web printing, solid rotary dies are the first choice when flexible dies reach their physical limits. This applies especially when cutting cardboard packaging, non-woven fabrics or other thick materials, as well as for applications where die-cut or waste material has to be disposed of or moved.

Our PowerCut® solid dies impress with their precision and durability. Each cylinder is manufactured using the latest CNC technology and adapted exactly to your individual requirements.





# AirTec Solid dies



AirTec cylinders are solid dies with compressed air connection and are used when waste is produced during the die-cutting process which cannot be grated off. Via air channels inside the cylinder, the compressed air is guided to the cylinder surface with pinpoint accuracy. Die-cuts are blown out exactly and safely disposed of by a suction device, so that no waste remains between the cutting edges or in the material web. Therewith the AirTec ensures a smooth and clean production.

As an alternative for particularly thin materials or very small cut-outs, we also offer the VacTec solid die, in which the cut parts are sucked in and discharged again through the lance.



## Sheeter and slitting cylinders

.....

Wink's multifunctional sheeter cylinders are available in various formats with different exchangeable cutting blades, e.g. for accurate perforating, cutting or kiss-cutting. They are available for all common machine types and, of course, also in special designs. The tried and tested Wink clamping system guarantees cost-effectiveness.



In addition, we offer slitting cylinders in many versions. The wheels for slitting or perforating are adjustable across the web in a very easy and convenient way.



## Ultrasonic cylinders

Wink can also supply you with suitable rotary tools for continuous ultrasonic welding in the narrow web sector. We offer the anvil cylinders required for this purpose in all standard working widths and formats and provide them with the desired outline, accurate to the micrometer.

Our anvil cylinders are made of high-quality stainless tool steel. They are hardened and can be reworked several times if necessary to achieve maximum running times.



# Cutting units



Wink cutting units are used in many industries in rotary converting machines and are perfectly adapted to the respective workflow and application. Our die stations are convincing due to their special stability, and thanks to their modular design they enable the integration of a wide range of functions which ensure maximum efficiency and precision for die-cutting.

## ACCESSORIES

Everything from a single source and perfectly matched - optionally, suitable accessories are also available:

- Deflection rollers
- Protective devices / hoods
- Suction funnel
- Crank for manual operation



## ForceControl PRESSURE GAUGES



ForceControl pressure gauges for adjusting and monitoring the cutting pressure for rotary cutting tools provide you with an effective and controlled process for all cutting tasks. The Wink pressure cells can be easily positioned immediately after changing jobs using the quick snap lock system.



## Adjustable Anvil Cylinder

.....

Whether ultra-thin substrates, through-cuttings, large working widths or high production speeds:  
With the adjustable anvil SmartGap® you can easily achieve perfect die-cutting results.





## WHY ADJUSTABLE?

The variety of materials and ever thinner liners place special demands on all die-cutting components. Adjustable anvil cylinders allow variable adjustment of the gap dimension and thus the cutting depth. In many cases, however, conventional adjustable systems struggle with problems - especially with cutting-through, large working widths and high production speeds.

Wink's SmartGap® system overcomes these limitations. The SmartGap® enables you to flexibly and accurately adjust the cutting depth to your needs. The system convinces with a highly precise gap adjustment on both sides and a particularly stable construction, which ensures unique running smoothness.

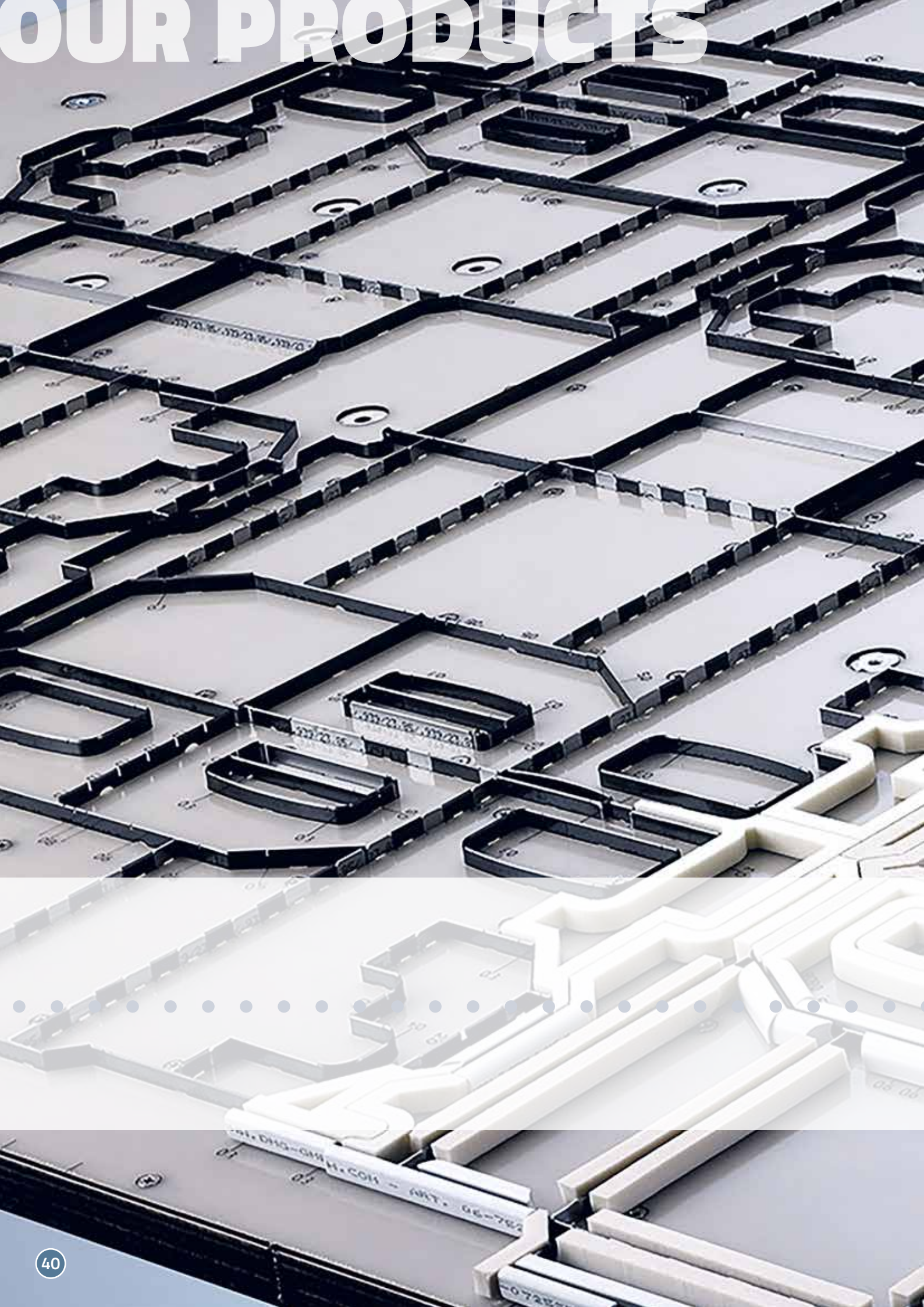


## SMARTGAP® VERSIONS

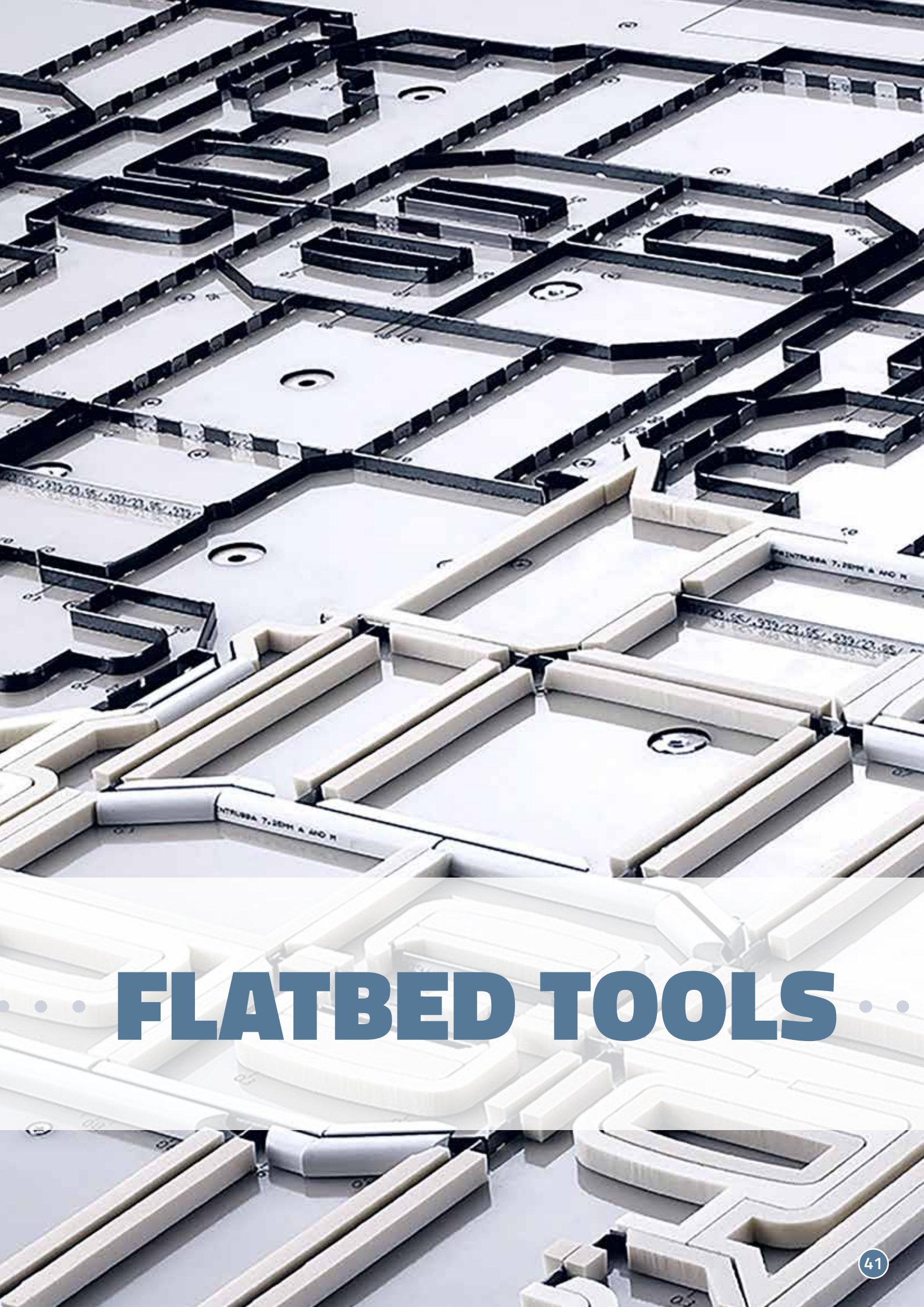
All SmartGap® versions use the same proven stable design, with the extra wide bearing rings of the support roller backing the body of the anvil cylinder. While the basic **ADVANCE** version is controlled purely mechanically using adjustment knobs, the **TOUCH** digital version is controlled via a control unit and display. The Touch model provides a number of powerful functions that make die-cutting more efficient than ever. The basic Advance version can be easily upgraded to the digital Touch version, which can be extended with an **AUTOCONTROL** package. No matter which version you choose, with the SmartGap® you are perfectly equipped for the future of rotary die-cutting.



# OUR PRODUCTS







# FLATBED TOOLS

## Steel rule dies for labels

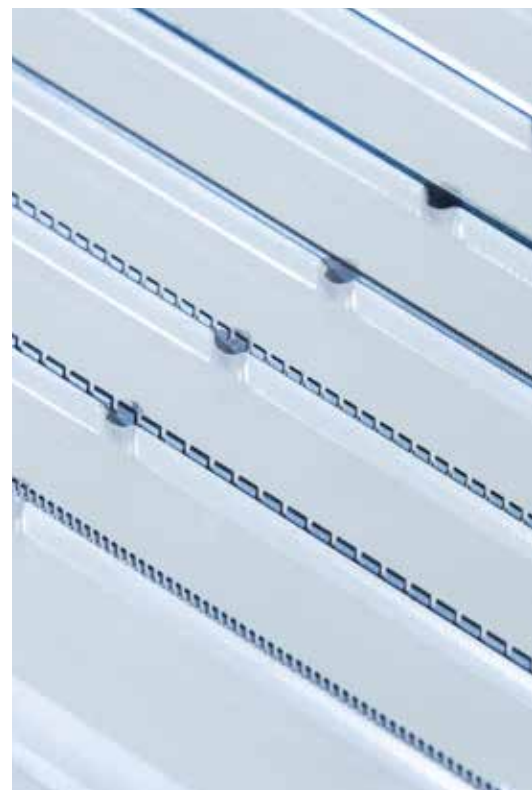
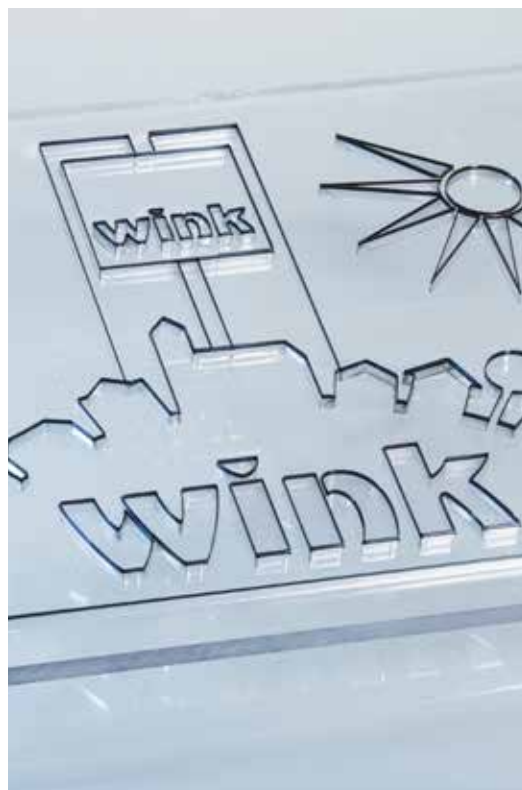
.....

Decades of experience in the production of steel rule dies and the use of advanced laser technology have transformed this traditional tool into an efficient piece of manufacturing equipment.



### QUALITY THROUGH TRADITION

The quality of our steel rule dies can be seen in their minimal tolerances, as well their excellent ability to cut all adhesive composite materials and seamless rule joints. Thanks to the specially adapted steel rule geometry, Wink has managed to keep the deformation of steel rules to a minimum in the corners. This guarantees a uniform cutting result and impression-free cutting, even when using the most difficult materials.





# Flatbed die-cutting



Wink is a certified manufacturer of flatbed tools for the production of folding cartons, corrugated packaging, commercial printing, adhesive labels and technical die-cutting parts. Our portfolio includes simple steel rule dies for conventional platen die-cutters as well as multi-part high-performance tools for automatic die-cutting machines.

**ALL FROM  
ONE SOURCE**



**STEADY  
DEVELOPMENT**



**EXTENSIVE  
SERVICE**



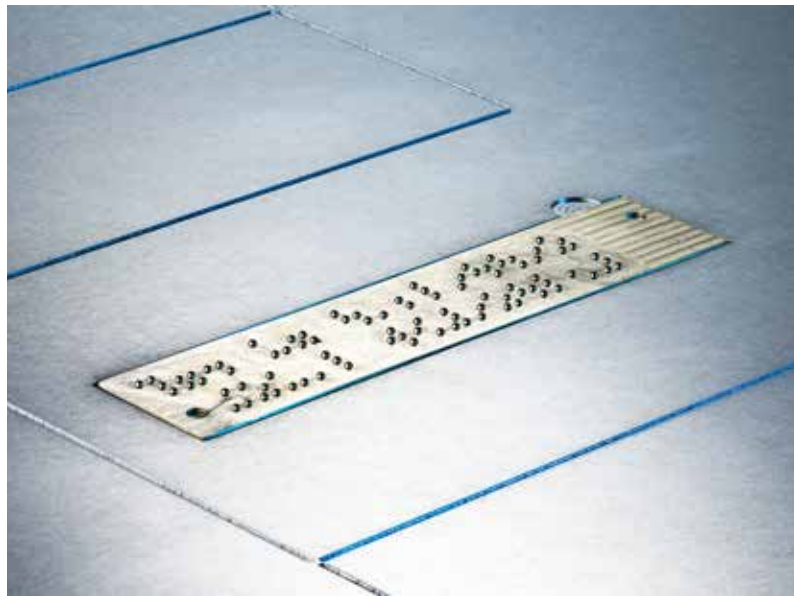
# FLATBED TOOLS

## Steel rule dies

### Cardboard & corrugated board

.....

Wink steel rule dies for packaging made of cardboard and corrugated board impress with their precision and stability. Thanks to modern production, experienced employees and first-class materials, we can implement even the most demanding orders. Our tools guarantee short set-up times and fast production speeds.



# Steel rule dies

## Technical products



Our die-cutting tools are also excellently suited for many products from the technical sector. Thanks to our experience and specially developed tools, we guarantee perfect results for these applications as well.

Apart from paper, cardboard and foil, many other materials can be die-cut with our tools, such as sheet metal, textiles, leather, rubber, cork, plastic or foam materials. Our customers come from a wide range of industries: Automotive, pharmaceuticals or the games industry.

### DIE-MAKING IN PERFECTION

Dimensional stability is a decisive criterion in die-making. The carrier plate is of particular importance here. We offer our carriers in various designs that provide you with exactly the dimensional stability you need: Multiplex, GRP or Epox. Our laser-cut beams guarantee maximum register accuracy. In addition, they convince with excellent planarity and a firm rule fit. High-quality materials make our tools particularly durable and - thanks to the possibility of multiple rework - extremely economical.

**MINIMUM  
TOLERANCES**



**SHORT  
SET-UP TIMES**



**HIGH  
LONGEVITY**



# WINK WORLDWIDE



## WINK TEAM



More than 440 employees  
at 7 locations  
around the globe



## SALES PARTNER



Numerous agencies  
and sales partners  
in all regions



## CUSTOMERS



Worldwide approx.  
4,000 customers in  
over 100 countries



# OUR LOCATIONS



Worldwide, our ambitious and competent Wink team ensures complete customer satisfaction with the production of high-quality tools and excellent service.



**HEADQUARTERS  
PRODUCTION FLEXIBLE DIES**  
*Neuenhaus, Germany*



**COMPETENCE CENTER  
CYLINDERS**  
*Simmerath, Germany*



**WINK SOUTH S.R.L.**  
*Gallarate, Italy*



**PRODUCTION FLATBED TOOLS**  
*Neuenhaus, Germany*



**WINK NORTH A/S**  
*Kastrup, Denmark*



**PRODUCTION FLATBED TOOLS**  
*München, Germany*



**WINK US, LLC**  
*Charlotte, USA*

# WE ARE THERE FOR YOU!



FOLLOW @WINKTOOLS



**Wink Stanzwerkzeuge GmbH & Co. KG**

*Headquarters*  
Neuenhaus, Germany

*Competence Center Cylinders*  
Simmerath, Germany

*Production Flatbed Tools*  
Neuenhaus, Germany

*Production Flatbed Tools*  
Munich, Germany



**Cutting Edge Tooling Ltd.**

Nottingham, UK | [sales@cuttingedgetooling.co.uk](mailto:sales@cuttingedgetooling.co.uk)

[www.cetooling.co.uk](http://www.cetooling.co.uk)

**wink**<sup>®</sup>

*You cut, we care.*