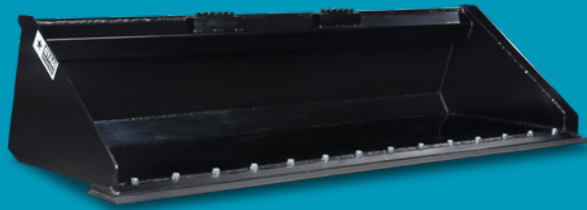
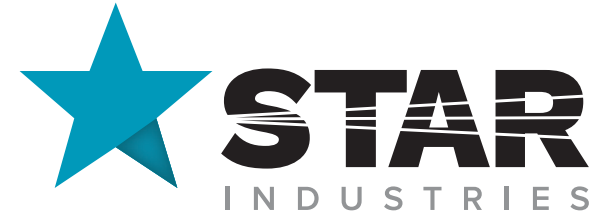




PROUDLY MADE IN THE USA



# Skid-Steer Attachments:

## Turn a skid-steer into a fleet of equipment

If you are looking for any specialty attachments and accessories for skid-steers, give us a call at (800) 541-1797 or contact us online.



## Skid-Steer Attachments:

Turn a skid-steer into a fleet of equipment

---

### WHAT IS STAR MISSING?

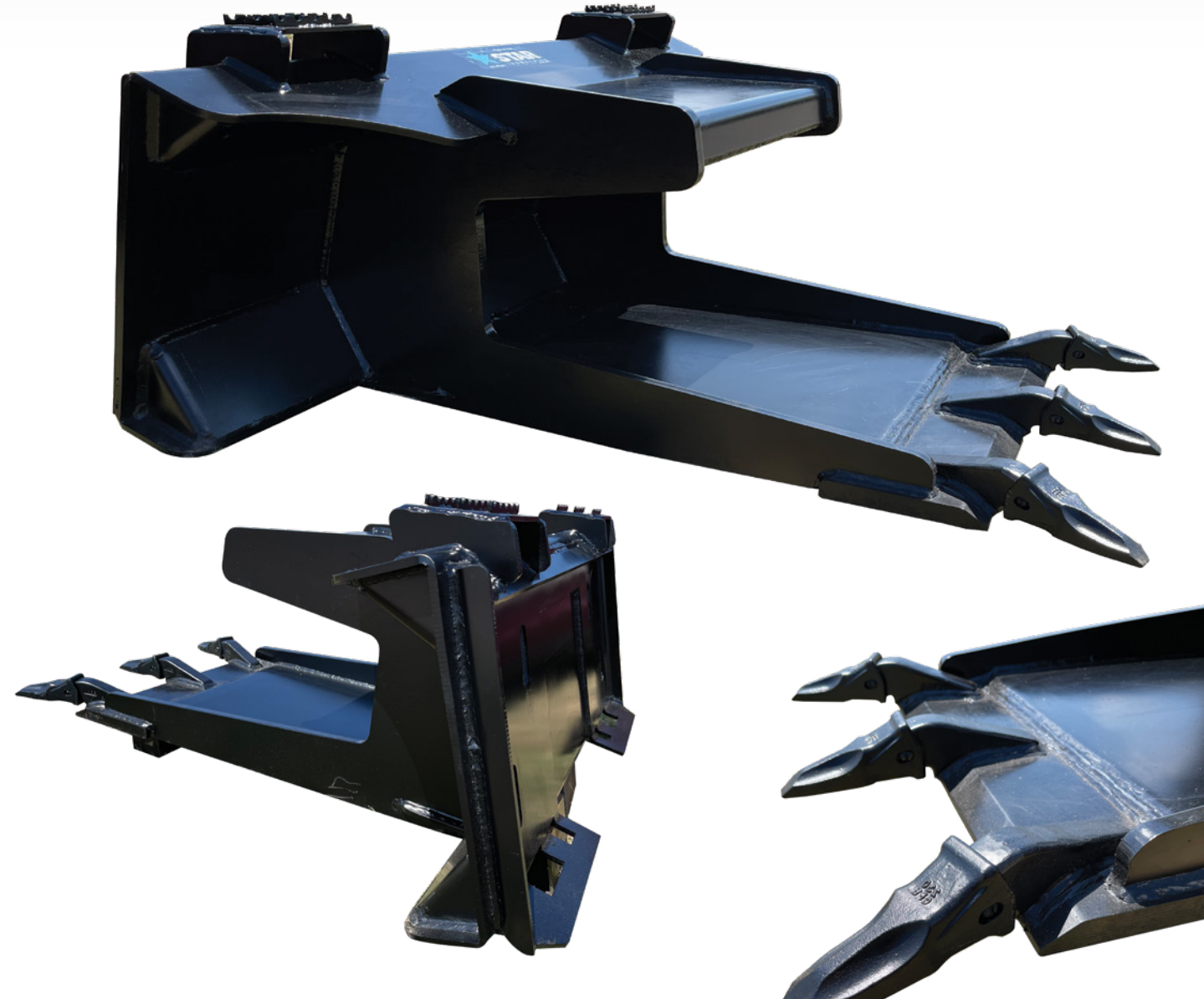
What product do you want or need but it doesn't currently exist? [Talk to us!](#)

SKID-STEER

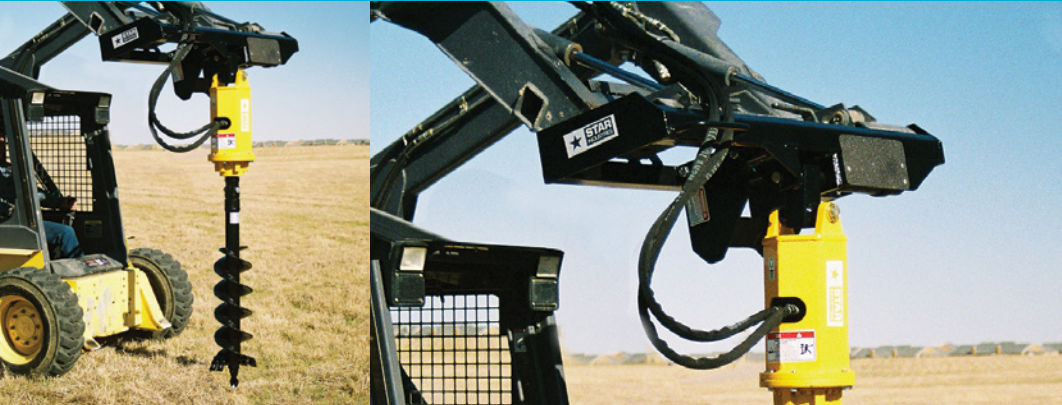


## 1 Slab Eater

- Pry, cuts, tears and rips its way through almost anything
- Leaves more of the slab intact, making it easier to carry the slab away
- Speeds up concrete and general demolition work including tree stumps



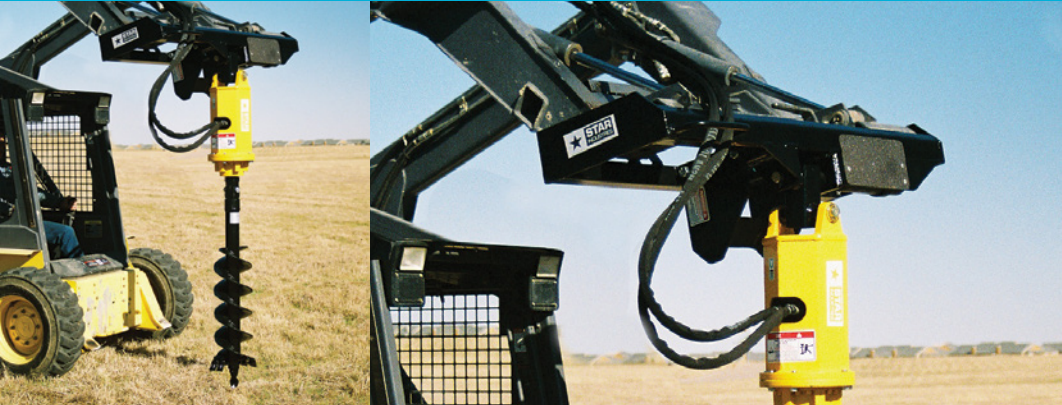




## 2 Heavy Duty Auger

- Ideal for all types of dirt, concrete and even solid rock
- Three different auger types for all drilling applications
- Extra heavy-duty components that out-perform all other augers in their class





### 3 Auger Kit Complete Assembly

- Ideal for dirt, concrete and even solid rock
- Range of auger types and shaft extensions for all applications
- Extra heavy-duty components that outperform all other drives in their class
- Mini Auger kit available

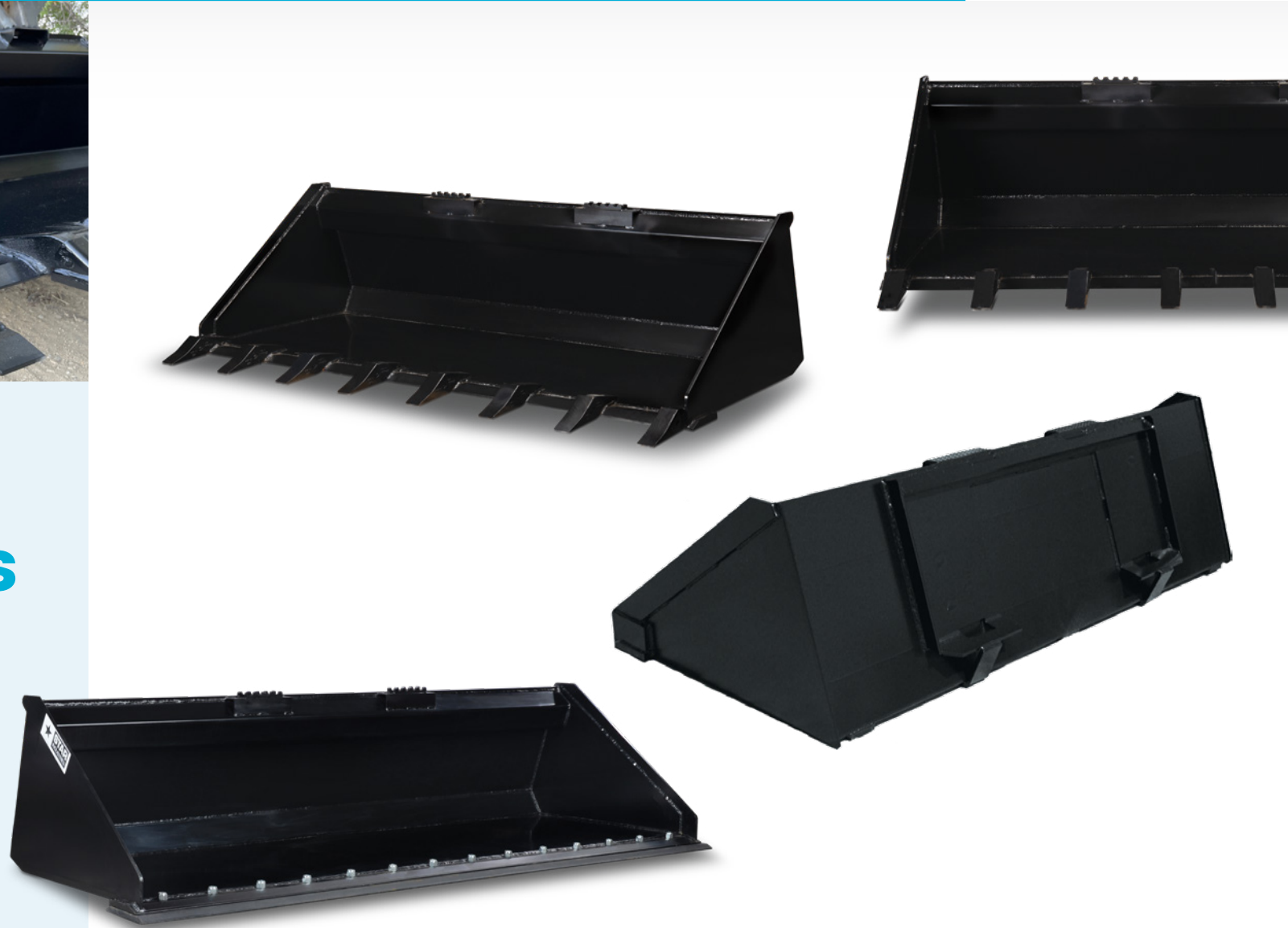






## 4 Heavy Duty Skid-Steer Buckets

- Choose from buckets widths of 60", 66", 72", 78" and 84"
- 5 bucket profiles: low profile, dirt, utility, snow & light material, fertilizer and cotton seed
- Side Cutters: optional bolt-on





## 5 Extreme Duty Skid-Steer Buckets

- Choose from buckets widths of 72", 78", 84" and 96"
- 25% heavier bucket shell and 80% heavier cutting edge
- Side Cutters: optional bolt-on





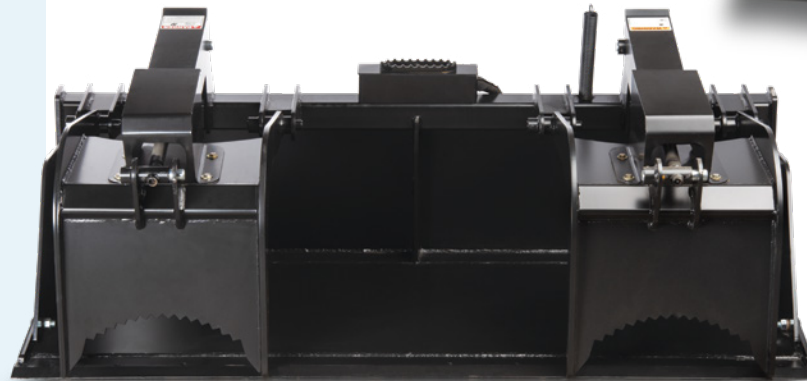
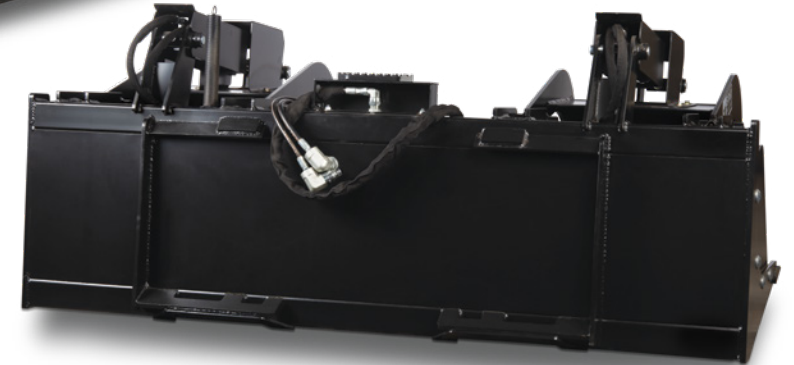


## 6 Concrete Placement Buckets

- Works better than other systems costing thousands of dollars
- Place concrete in hard to reach areas with your skid steer
- Built tough to take the abuse of a busy construction site







## 7 Grapple Buckets

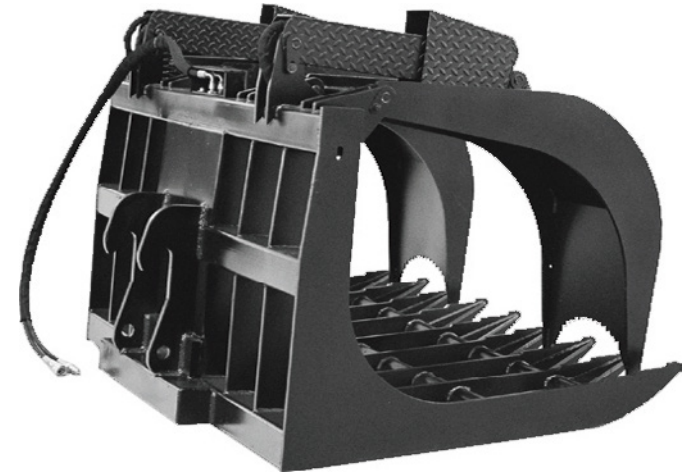
- Hydraulic cylinders operate independently to adjust for uneven loads
- Steel covers and shields protect hydraulic lines and cylinders from accidental damage

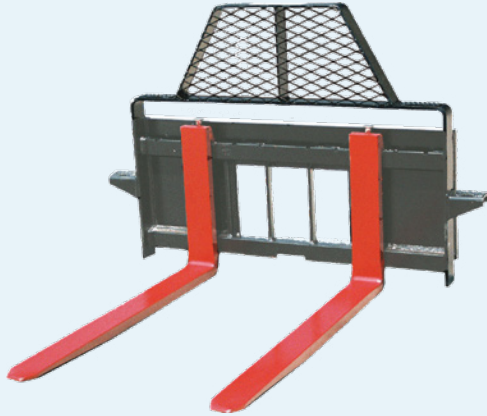




## 8 Root Grapple Buckets

- Root grapple tines curve upward to prevent catching utility lines or cables in storm clean-up
- Hydraulic cylinders operate independently to adjust for uneven loads





## 9 Heavy Duty Fork Frames

- Universal Quick-Tach manufactured in North America
- Big load capacities
- All welded steel construction
- ITA style forks lock into position and can't swing out when loads are dumped



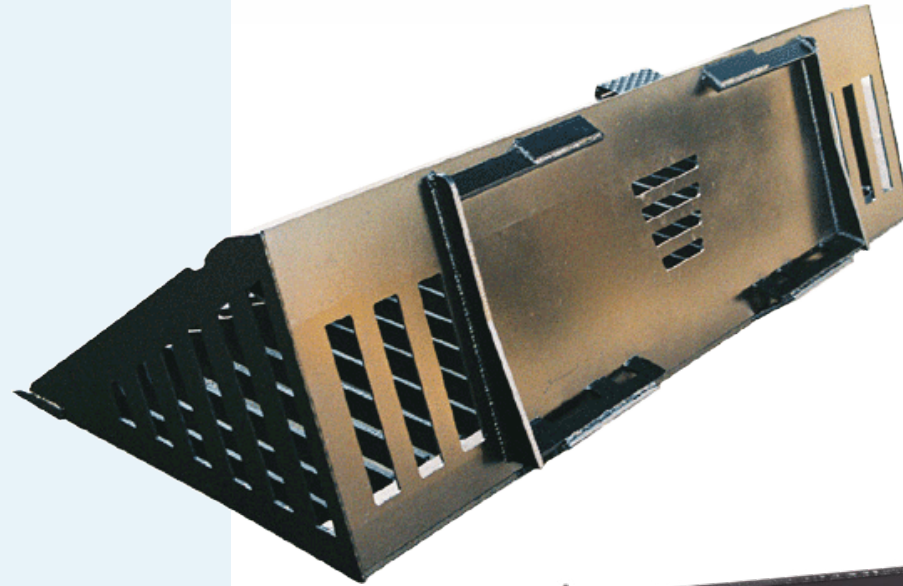




## 10 Trailer Spotter

- Simply unhook the bucket and attach to the Trailer Spotter
- Designed to set upright so the operator never has to get off the loader
- Built strong to handle big loads and take lots of punishment





## **11** Heavy Duty Skeleton Bucket

- Heavy Duty Universal-Fit Skid Steer quick-tach fits all current full-size skid-steer loaders
- Leading edge 1" x 8" high carbon bevelled blade with optional heavy-duty teeth





## 12 Trash & Loose Material Hoppers

- Perfect for waste removal on job sites. Use skid-steer to dump hopper contents into larger containers or trash area when full.
- Great for landscape yards and sites. Load full hopper on to the truck for delivery. Use onsite skid steer to dump hopper material right where it is needed.





# Next Steps



Select one (or more) skid-steer attachments



Provide specific needs/specs



Get custom quote designed for your specific needs