

Concierge

KEEPING THE HOSPITALITY INDUSTRY INFORMED SINCE 1998



That pink gelatinous canned meat product is absolutely revered here in Hawaii. Spam products can be found everywhere from sitting next to a register at a coffee shop to convenience stores to food trucks to even our fanciest restaurants. Consuming over 7 million cans a year, there are no two ways about it, Hawaii loves its Spam.

Part of that love stems from that beloved, iconic, perfect for those-on-the-go snack, Spam® Musubi. A quick post on Facebook about where to find the best ones on the island led to dozens of responses and lively debates within minutes. People are very passionate about their musubi! 7-11 was a clear leader, (in the morning, when they're fresh) with some obvious shout outs to Tanioka's, Mana Bu's and Musubi Café Iyasume. Learned something new as well. Apparently the musubi at the Hawaii Kai Golf Course is top notch, so you might want to mention that if you ever send your guests out there. Who knew? (OK, a lot of people knew, just not me!)

It should come as no surprise that this beloved meat product has its own festival in the state that loves their Spam. This year, the Waikiki SPAM® JAM celebrates its 15th anniversary with more. More entertainment, more restaurants, more stages and probably even more people! Seeing as the festival drew about 25,000 people last year, that's saying something.

On Saturday, April 29th, Kalakaua will start closing down at 1 p.m. to set up. The Festival itself runs from 4 p.m. to 10 p.m. from Seaside to Uluniu. Aside from being a fun celebration of all that is Spam®, the event stands for an even greater purpose. All proceeds benefit the Hawaii Foodbank, with contributions made to the Waikiki Community Center and VASH as well. Over the past 15 years, SPAM® JAM has raised more than \$100,000 and collected nearly 27,000 pounds of canned goods for the Hawaii Foodbank. Bring a can or two (or twenty) with you when you go, as

the Foodbank will be collecting donations throughout the event.

What's a block festival without music? This year organizers have added a third stage for your enjoyment. Currently the plans have one stage set up in front of Royal Hawaiian Center, one in front of the Moana and another one in front of Hyatt. The stage locations are subject to change between now and then, but you have the general idea.

There will be live music and hula on those three stages throughout the event, making this festival a non-stop bevy of activity for your enjoyment. Wander through the street fest noshing on Spam-bites, enjoying the various talent and browsing through booths filled with Hawaiian crafts from a variety of vendors and Spam-themed items such as t-shirts, shorts, sport balls, and slippers. This stuff sells like crazy. Over the years, I've actually gotten a few phone calls from random people on the mainland who missed the festival looking to see if we could help them acquire SPAM® JAM merchandise. Although we lead the pack as far as who consumes the most Spam in the states (followed by Arkansas, Alaska, Texas and Guam) we are not the only ones who are obsessed by those familiar blue cans. Fun Fact: A man in Liverpool, England legally changed his middle name from William to 'I Love Spam' in honor of his uncle and grandfather who both worked at a UK Spam factory. He is so obsessed with Spam, that he will be getting married at the SPAM Museum that opened last year in Austin, Minnesota on April 25th. To top off the dream wedding for the ultimate Spam fan, the newlywed couple will then board a plane to Hawaii so they can experience SPAM® JAM for themselves. (Man, that's a patient woman!) They should be getting their share of air-time when they arrive, so keep a look out for Mark "I Love Spam" Benson on the news later this month. The story is a pretty good one.

Continues on page 6.

HIFF's 20th annual Spring Showcase

The Hawaii International Film Festival returns with its annual Spring Showcase from March 31 – April 9 at the Regal Dole Cannery Stadium 18. In true HIFF fashion with its strong Asian film focus, audiences can plan on enjoying 32 feature films from 12 different countries.

This year, audiences can expect to see such major films as *Rage*, the Japanese suspense mystery drama starring *The Last Samurai* Star Ken Watanabe and China's *Duckweed*, which was released at the end of January this year and instantly became one of the highest grossing Chinese films of the year, making one billion yuan (\$144,982,170) in less than a month after being released, according to Chinese box office reports.

HIFF's goal is to bring the best and most popular titles from Asia to Honolulu. "Aside from South Korea, East Asia is strongly represented with major films from Japan and China," says Anna Page, co-Director of Programming.

The Spring Showcase will kick off with the Hawaii premiere of South Korea's *The Prison* on opening night, March 31st at 8 p.m. The film will be shown again on April 4th at 8:15 p.m.

The Spring Showcase is also bringing back the Japanese classic film, *Tampopo* in its newly remastered glory. The 1985 film, directed by Juzo Itami, is considered by many to be one of the greatest Japanese films of all time. This film will only be screened one time, on April 1st at 3 p.m.

New to the Showcase this year is a special film program presented by the Office of Hawaiian Affairs. They produced two films that perpetuate the challenge, history and future outlook of Native Hawaiians. First up, *Justice Delayed is Justice Denied*. This 25-minute short depicts the ongoing struggle to ensure that the State of Hawai'i fulfills its commitments to the Native Hawaiian people stemming from the loss of their ancestral lands. The short is followed by a documentary called *Na*

Continues on page 2.

TABLE OF CONTENTS

Yada Yada Yada	2
Newsflash	3
Arts with Aloha	4
Concierge Event Guidelines	6
Paparazzi: Yauatcha FAM	8
Chef's Corner: 3660 on the Rise's Lydell Leong .9	
E Pili Kakou	10-13
Calendar	14-15
Paparazzi: Barefoot Beach Café FAM	16
That's Entertainment	18
Concierge of the Month: Vanessa Greene	19

W WOLFGANG'S STEAKHOUSE
 LUNCH • ALL-DAY HAPPY HOUR
 DINNER 'TIL MIDNIGHT • WKND BRUNCH
 Royal Hawaiian Center • wolfgangsteakhouse.net
 808.922.3600





April is a mellow month

What's that saying? April showers bring May flowers? What about March showers? Crazy weather lately, but boy the island sure looks lush because of it. The weather certainly hampered my weekend whale watches, but I still got a few in. Most times we were able to go out, we were rewarded with some pretty amazing encounters. If you haven't gone out yet, you need to. I noticed on the whale watch ads we've been running the past months that the guarantees end the first week of April. However, I went out in the middle of March and saw them everywhere, so I'm hoping the whales didn't get the memo that it's time for them to leave and stick around for a few more weeks. Being able to see these beautiful creatures swim lazily around our waters is truly one of the good things about Hawaii. I'm not ready for them to leave yet.

Aside from trying to see as many whales as I can before they go, April is looking to be a very mellow month. When I was looking for major events to write about, there really wasn't much out there. You have HIFF's Spring Showcase at the beginning of the month and Spam Jam at the end of the month. Aside from that, I think I'll call this the calm before the storm. That being said, the concierge event schedule is starting to fill up. I'm doing my best to keep it to 3 a month so as to not infringe on your time too much, but I already have events booked as far out as September. Since everyone seems to be hiring as fast as they can to fill all the new positions out there, there's a lot of new faces out there that just may not understand what a concierge event is. So I took the opportunity there wasn't a ton to write about to go over some basic guidelines on page 6. If you're a newer hire, please take a moment to read through them. If you've been around forever and perhaps have gotten a bit entitled over the years from all the wonderful events you've been able to participate in, you might want to read through it as well! :) To be honest I ran out of room before I got through everything I wanted to bring up, but I think the important points are there. One of the things I missed was that space and cost restrictions often mean I have to trim down my invitee list. Please reply when I send an email. If no one from your desk is interested or available to attend and you aren't going to use the seats I've allocated your desk, just let me know. When I'm forced to trim hotels off the list, the first ones I remove are the ones that haven't replied to recent invites. So even if you're not interested in that particular one, you might have just removed yourself from the next one you end up wanting to go to. It's so tough to have to cut a list down, if you've ignored the past few you become the first to go. On that note, if I'm using you as a contact for these invites and you don't want the responsibility, again, just let me know. Ask a co-worker if they wouldn't mind and send me their info. I'm not here to harass anyone. But we have some amazing opportunities in our future and I want to share them with as many as I can. If you don't want your seats, please let me know so I can offer them to another who might truly enjoy it in a timely manner. I end up wasting so much time tracking people down sometimes. Your assistance is truly appreciated.



Ha'aeo Zablan

Ha'aeo Zablan, former Concierge of the Year winner in 2012 has left the Aulani to take over the Front Office Manager at the Waikiki Beach Marriott Resort and Spa. In his new position he will oversee the front office operation of over 80 associates, supervisors and managers in the bell, valet, hotel operator and front desk departments. Love to see those shining stars moving on up! • **Outrigger Hotels and Resorts** announced that **David Carey III**, who has successfully led the company for more than 30 years, will transition into a lead role on the Outrigger advisory board and focus on community relations, development, and strategic growth. **KSL Resorts** co-founder and CEO **Scott Dalecio**, the new owner of the company, will take over day-to-day oversight as Outrigger plans for future enhancements. • Speaking of former shining stars, **Czarina Lam**, a concierge of the month back in 2005 has just had

her role as director of revenue management for the **OHANA Waikiki East** and **OHANA Waikiki Malia** expanded to include the **Holiday Inn Resort Waikiki Beachcomber**. You guys sure know how to pick the winners! Please keep those nominations for concierge of the month coming, you never know how long we'll be talking about them! • **The Hilton Waikiki Beach** announced **Rey Baysa** as its new Executive Chef, replacing James Aptakin who has been busy representing Hawaii in national cooking competitions. Chef Rey joined the hotel late last year and is now leading the entire culinary operation for the property and M.A.C. 24/7. • **The Ala Moana Hotel** announced that **Roy Piliere** has been hired as a sales manager, overseeing their corporate and wholesale markets. Most recently he was at Airport Honolulu Hotel and Best Western the Plaza Hotel. Prior to that, he was at the Holiday Inn Resort Waikiki Beachcomber.



Czarina Lam

Spring Showcase

Continued from page 2

Hula Lehua: The Royal Cloak & Helmet Of Kalani'opu'u, which tells the story of the chief's cloak and helmet gifted to captain James Cook in 1779, and finally returned to Hawai'i in 2016. Both movies will be shown on April 2nd at 3 p.m.

The majority of the films being shown at the Showcase are being premiered for the first time in Hawaii, the States, or even internationally – and most have subtitles. One of the few films making its Hawaii premiere that does not have subtitles is **Colossal**. Starring Anne Hathaway and Jason Sudekis, the story follows a hard partying girl whose boyfriend gets tired of it all and tosses her out. She returns to her hometown, dreaming of making a new start, but instead revives a childhood friendship and runs a bar. After drinking the night away, she wakes up to discover a gigantic monster rampaging through Seoul and realizes that somehow the monster is connected to her. Shown April 1st at 7:45 p.m.

Another English film is **A Quiet Passion** starring Cynthia Nixon (from *Sex & the City* fame) as Emily Dickinson as she personifies the wit, intellectual independence and pathos of the poet whose genius only came to be recognized after her death. Acclaimed British director Terence Davies exquisitely evokes Dickinson's deep attachment to her close knit family along with the manners, mores and spiritual convictions of her time that she struggled with and transcended in her poetry. This film will be shown at 5 p.m. on April 5th and again on April 8th at 3:15 p.m.

One of the must see films of this year's Showcase is straight out of Sundance. **The Last Men in Aleppo** follows two Syrian members of the White Helmets, the organization that goes in after each bombing and tries to rescue victims potentially trapped under the rubble. The audience experiences what daily life is like for these men in a city under fire. The documentary is at times hard to watch, the joy of digging out child from the ruins who is still breathing followed by the heartbreak of finding a sibling or mothers remains moments later.

Footage is often graphic. The audience is on a roller coast of emotions from joy to triumph to tragedy, but all agree it is a must-see, especially given the times we live in. Filmed in Arabic there are English subtitles. The movie will be screened twice, on April 1st at 2:45 p.m. and April 4th at 8 p.m.

The Spring Showcase has always given HIFF the opportunity to bring some of the hottest films from various film festivals to Hawaii soon after they debut. According to Anderson Le, co-Director of Programming. "Straight From Sundance' is a perfect example of getting these hot films right after their world premieres just over 2 months ago in Park City, where Sundance is held. Spring Showcase allows us to be relevant in bringing these films to Hawaii before many other cities around the nation."

This year's closing film is just off its world premiere at the Sundance Film Festival, where it won the US Documentary Audience Award. **Chasing Coral**, directed by Jeff Orlowski (who also directed *Chasing Ice*, his 2014 award-winning documentary about climate change). There are people out there that like to pretend climate change does not exist. Orlowski is trying to show the world that it does, and the damage it does to the earth's ecosystems. Explore the beautiful undersea world of a vibrant, thriving coral bed bursting with color and life and watch though a series of time lapse images as it sadly starts to die by first turning a blinding white, and then into what looks like gray lifeless skeletons. It's an important film given the world as it is today.

For a complete listing of all of this year's films or to purchase tickets, go online to hiff.org. ~ Pam



Chasing Coral follows scientists via time-lapse photography as they record bleaching events as they happen offering spectacular and heartbreaking footage from under the sea.

EXTRA EXTRA EXTRA *Newsflash*

HONOLULU'S NEW BIKESHARE

Bikeshare Hawaii has announced Biki, Honolulu's new bikeshare program launching this summer. 1,000 bikes will be at 100 conveniently located self-service "Biki Stops" from Chinatown to Diamond Head. The stations about a five-minute walk apart so users don't need to worry about where to pick up or drop off a bike. The bikes are easy to maneuver, fun to ride, and have all of the comfort and safety features of larger bikes while designed for trips of one to two miles in street clothes. bikesharehawaii.org.

HFWF RAISES BIG MONEY

The Hawaii Food & Wine Festival announced that they were able to raise a record \$394,000 for local beneficiaries from last October's event. Fourteen nonprofits including culinary, agricultural and community organizations were gifted between \$2,500 and \$80,000 each. This brings the total HFWF has given to local charities to nearly \$1.7 million over the past 6 years. Mark your calendars now for this year's festival which will be held October 20 – November 5th. HFWF.me

HONOLULU BIENNIAL



The Honolulu Biennial Foundation has announced its 2017 show. Entitled, Middle of Now | Here, this new, contemporary, multi site, visual arts

festival runs from March 8 – May 8 throughout various sites in Honolulu. Nearly 3 dozen artists will have their works on display around town at such places as Ward Village, Hawai'i Prince Hotel, Honolulu Hale, Foster Botanical Garden, The Arts at Marks Garage, The Honolulu Museum of Art, Bishop Museum and Shangri La. Complete details are available at honolulubiennial.org.

SAM CHOY OPENS FOOD TRUCK

One of Hawaii's favorite chefs is back in business on Oahu again. Sam Choy and Tita's Seafood & Poke Truck opened in Roulotte Court, the food court area of the Hukilau Marketplace at the Polynesian Cultural Center, bringing the total to seven trucks offering everything from garlic shrimp to crepes to shave ice and more daily from 11 a.m. – 8 p.m. The Marketplace just marked its 2nd anniversary. polynesia.com.

ROCK-A-HULA CHANGES CAST

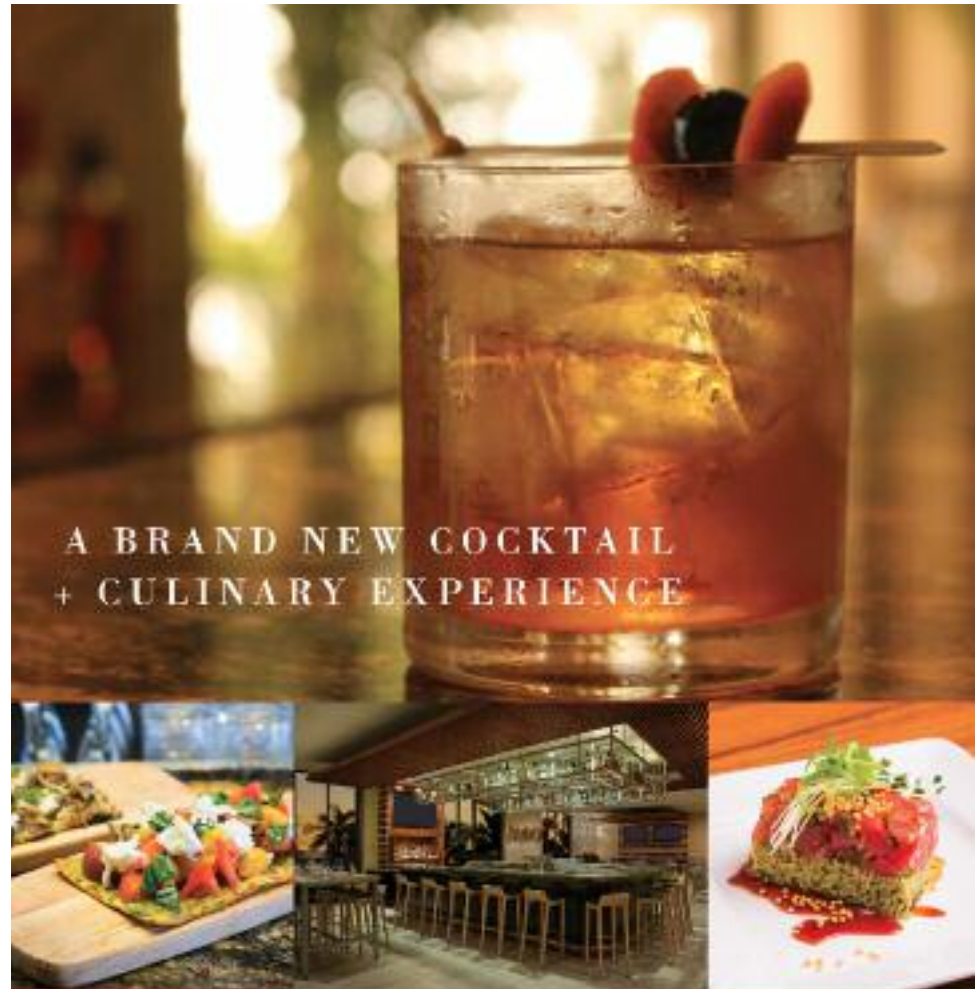
Rock-A-Hula will introduce a brand new show on April 1st. Celebrating six years in the islands, the new show features new Hawaiian acts as part of their "Hawaiian Journey" intro, new costumes, new choreography, new costumes, new special effects and a brand new tribute artist, Katy Perry will join perennial favorites Michael Jackson and Elvis Presley onstage. RockAHulaHawaii.com.

60 YEARS OLD!

Star of Honolulu Cruises & Events is celebrating 60 Years of Aloha! To commemorate this milestone anniversary, Star of Honolulu will debut a brand new "60 Years of Aloha" show in April, featuring new costumes, choreography and special effects. The Star is also working on a Art Deco-inspired \$1 million renovation to its private dining spaces and ballrooms on all four levels, capturing the beauty, magic and romance of Hawaii in the 1920s and 1930s. Renovations should be completed mid-year. Call 983-STAR or StarofHonolulu.com.

ARCHITECTURE MONTH

April is the 11th annual celebration of Architecture Month in Hawaii. To celebrate, the American Institute of Architects will offer a variety of activities, including a 2-hour walking tour of UH Manoa's campus led by AIA member-architects, on Saturday, April 8. This rare opportunity to explore the central campus from a design perspective for only \$15. A series of other free and low-cost activities will also be presented throughout the month. A complete list of events can be found online at aiahonolulu.org.



A BRAND NEW COCKTAIL
+ CULINARY EXPERIENCE

KUHIO BEACH GRILL RESTAURANT & BAR

Stylish locally sourced American cuisine with shared dishes served table side. Home of Waikiki's best selection of whiskey & bourbon in a stunning setting overlooking Waikiki Beach.

Open for Dinner 5 - 10pm

Waikiki Beach Marriott Resort & Spa - Kealohilani Tower 2F

For reservations book on OPEN TABLE or call 808 921 5171

Free validated parking #KBGWaikiki   



arts with aloha



A night at the theatre is something all your guests should experience while on O'ahu. One of the best places to sit back and enjoy live theatre is at the historic **HAWAII THEATRE** and this April, the

place known for many years as the Pride of the Pacific, has a stellar line up of singers, musicians and comedians to satisfy the most persnickety guest staying at your hotel.

As you all know, the Hawaii Theatre has been the heart of O'ahu show business for much of the 20th century and is still going strong as it nears its 100th anniversary in the 21st century. The historic theatre opened in 1922 as a showplace for vaudeville, silent films, plays, musicals and Hawaiian entertainments. It slowly evolved into a plush movie palace until it fell on hard times in the 1970s, when Waikiki became the entertainment destination for locals and tourists alike. Thirty-five years ago, concerned citizens banded together around the mission to preserve and restore the Hawaii Theatre and formed the Hawaii Theatre Center, a 501(c)3 nonprofit that owns and operates the historic theatre today. The theatre hosts approximately 100,000 patrons annually showcasing the finest in local, national, and international entertainments. The Hawaii Theatre is listed on both the State of Hawaii and National Historic Registers. For those of your guests who are interested in both theatre and architecture, you should recommend the one-hour docent-led tour which features not only the history of the structure but also the artwork inside it and its importance to the community. The tours are subject to change/cancellation due to rehearsal & performance schedule, so it is always best to call 528-0506 to confirm tour date and time.

Now let's get down to who is stepping onto that magnificent stage this month. First up is comedian **JB Smoove** who many of you may know from his breakout role of Leon on HBO's *Curb Your Enthusiasm*. JB also hosted NBC's *Last Comic Standing* and appeared with Steve Carell and Tina Fey in the film *Date Night*. He will be joined by comedian **Donell Rawlings** (Comedy Central's *Chappelle's Show*) for one night only on April 7th at 7:00 p.m. Tickets are \$45 to \$65.

If comedy is not to your guest's liking, how about some "Bubbly" not the champagne kind but the **Colbie Caillat** kind. The two-time Grammy winner will also be appearing at the Hawaii Theatre on April 8th at 8:00 p.m. She will perform songs from her debut album *Coco* which features her breakthrough hit "Bubbly" which is the best-selling digital track in history as well as her gold-selling albums *Breakthrough* and *Gypsy Heart*. The show is presented by BAMP Project and tickets are selling out fast priced between \$49.50 and \$69.50.

If mainstream music doesn't turn on your guests, then they might be intrigued by **Release the Hounds: An Evening with Julian Lage & Chris Eldridge with Aoife O'Donovan** on April 15th at 7:30 p.m. You may not be familiar with these artists, but their blend of folk, bluegrass and jazz will definitely give your guests an evening of unexpected musical happiness. Lage is a renowned jazz guitarist who is considered one of the best improvising musicians around. His partner Eldridge is a veteran of the bluegrass world. Together their music is difficult to classify. A little bit of bluegrass and folk, mixed with jazz and pop, as well as some hints of classical composition. All of their music is performed on their flat-top steel-string acoustic Martins together. Tickets range from \$37 to \$47.

On April 21st at 7:30 p.m. go Filipino crazy with **FUNTASTIK 4** which showcases four of the best comedians in Philippine entertainment. The fantastic four include actress, singer and TV host Maria Carmela Brosas better known as K Brosas; Phillipine's People's Choice for Best Female Comedian, Marietta Tan Subong aka Pokwang; actor and comic Jonathan Aguilar Garcia aka Chokoleit; and impersonator Reynold Lagrimas Garcia known as Pooh. Clearly these performers have a sense of humor and hopefully your guests will too when you try to sell them a show with K Brosas, Chokoleit, Pokwang and Pooh! A certain amount of Filipino background and knowledge is a plus for seeing this show, but if your guests are game to go undercover as the Macadangdangs, I say go for it. Tickets are \$57 to \$97 which means they're more expensive than Colbie Caillat and Norah Jones who I have yet to tell you about. They must be good! Or, at least have a better agent.

I'm sure Norah Jones' agent is at least getting her everything she desires in her contract rider at the Hawaii Theatre. For those of you not hip to the life of a musician, a rider refers to the little extras a band received from the promoter at a gig, usually in their dressing room. For example Mariah Carey's rider insists that she is supplied with bottles of vitamin water to bathe her dogs as well as an attendant to dispose of her used chewing gum. I can't imagine Norah Jones being at all diva like for her **Norah Jones: Day Breaks World Tour** on April 26th and 27th at 8 p.m. on both nights. Tickets are selling quickly and range from \$49.50 to \$79.50. Norah is promoting her latest album, *Day Breaks* which returns her to her jazz roots and her unique sound that everyone fell in love with her release of *Come Away With Me* in 2002.

Tickets for all of these shows can be found online at HawaiiTheatre.com or by calling the box office at 528.0506. April is a great month to be at the Hawaii Theatre, if you can't get any of your guests to go, you should take your family and have some fun. Lucky we live Hawai'i! ~ Lance Rae



STRIPSTEAK



STEAKHOUSE REIMAGINED

Introducing Chef Michael Mina's evocative and modern steakhouse to your neighborhood, infused with the spirit of Aloha.

As a way to say Mahalo for your continued support, we're introducing...

—THE STRIPSTEAK WAIKIKI GUEST— REFERRAL PROGRAM

For every 50 guests referred, STRIPSTEAK Waikiki will send you a \$100 Gift Card. To join the program please contact events@stripsteakwaikiki.com



PRIVATE DINING

STRIPSTEAK Waikiki is also available for private events, please contact: events@stripsteakwaikiki.com

Follow Us @StripSteakH

Stripsteak Waikiki at International Market Place
2330 Kalaniana'olani Avenue, Suite 330 Honolulu, HI 96815
www.StripsteakWaikiki.com | 808.600.3094



ALERT!

brought to you by
The Waikiki Aquarium
open daily from 9 am - 4:30 pm



April 19-21 Box Jellyfish Window

Teaching Hawaii about jellyfish and other ocean creatures for over a century



FALL IN LOVE WITH POLYNESIA AGAIN WITH OUR “HOSPITALITY SPECIAL” FOR INDUSTRY PARTNERS.



**FREE ADMISSION
PLUS \$20 DINNER & SHOW**

FOR INDUSTRY EMPLOYEE & UP TO 3 LOCAL GUESTS

Regular rate \$84.95 per person.

Mahalo for sharing the Polynesian Cultural Center with your guests. To say thanks, we're offering you a chance to see what's new at the center including the Hukilau Marketplace's latest additions, our Ukulele Experience and new Tonga Village.

Available for **HOTEL, RESTAURANT, GROUND TRANSPORTATION AND AIRLINE EMPLOYEES.**

For reservations, call 293-3333 or email reservations@polynesia.com. Please include your name and reservation date.

To receive our “Hospitality Special,” you must show proof of employment and job title.

Reservations are required. Based on space availability. Offer valid 4/1/17 to 5/10/17.



808-293-3333 or POLYNESIA.COM

Unforgettable Island Adventures. Starting Daily at Noon. Closed Sundays.
Offer available to hospitality employees that are Hawaii residents or based in Hawaii. We will accept a valid employee ID or a letter from your HR Dept. verifying employment. All guests accompanying you must be kama'aina with valid Hawaii ID. No combining offers.

Concierge Event Tips & Hints

It seems like there's a lot of new faces out there recently, so it seemed as good of a time as any to go over the basics of our concierge events to prevent any hurt feelings or misunderstandings.

For you newbies out there. Concierge events are free! There really isn't any evil ulterior motive here, I promise! Companies contact me to reach out to you guys to get you to come in and experience what they have to offer. Be it a store, a restaurant, an activity or a shopping center, these are FAMs. (for you real newbies, FAM is short for familiarization tour). They want to wine, dine, entertain and educate you. They want to meet you in an atmosphere where you are not being distracted by a dozen guests in line with different needs and multiple phone calls on hold. They want to talk to you about what they can do for you to help you help them. And, of course, if you like what you see, hear, taste, do... they want you to recommend them to your guests. That is the true purpose of a FAM.

Now every FAM is different. We're lucky that so many restaurants are eager to reach out to you, but keep in mind that most of these events are not going to take the place of your dinner. I usually recommend that they sample small bites from a wide variety of their menu items to best showcase what they do. The goal is to give you a "taste" of what they have to offer. Now before you get mad at me for steering the majority away from a sit down dinner, think about it for a minute. There are hundreds of you out there. It is simply not feasible to feed all of you a full meal. When a restaurant does choose to host a full sit down meal for the FAM, the number of people we are able to bring in drops dramatically, and I quite frankly wouldn't be able to include many of you that I do.

Please remember that you are representing your employer and me when you are at these events. Be

respectful. You have no idea the amount of time and effort these companies put into hosting you. And, if you're being served, please remember to tip. I shouldn't have to remind everyone time and time again. If it's a more casual event being handled by a caterer then it's fine, but if it's an employee of the host, you should always tip. They still had to come into work to serve you. If you ever have any questions about that please don't hesitate to ask.

Now for the rules. The company tells me who they want and how many they can host. I then divide the seats between as many hotels as I can. If you did not make the first list it doesn't mean anything sinister, it's simply numerical. There are far more of you than anyone can realistically accommodate. I tend to follow a Noah's Ark mentality, getting representatives from as many properties as possible. If you're the lucky one that gets to go, please share the experience with your coworkers.

When I send the invitation, it is rarely for your eyes only I just don't have everyone's contact info. Please share it with your colleagues that work the desk with you. Please do not share it with other departments unless I ask. Please reply! If you're not interested that's fine. Just tell me so I can take those seats and offer them to another property in a timely manner. If you have more people that want to attend than I allocated you seats for, just tell me who and how many. As people release seats, I will pass them along. Most importantly, if you RSVP, either show up or take a moment to cancel. Preferably early enough that I can reassign your seat. I have a rule that if you no-show an event without reaching out, I don't invite you to the next one. Just send an email or text stating you can't make it. I don't care why. We all have lives, things happen, but communication is key. Follow these simple guidelines and I can keep everyone happy.

SPAM JAM

Continued from page 1

Now onto the meat of the matter, what to eat? Participating restaurants create favorite or unusual dishes featuring Spam®. For example, P.F. Chang's will be making their famous lettuce wraps using Spam instead of chicken, as well as their Spam Lo Mein and Fried Rice. Ono Pops returns for their 7th SPAM® JAM with some of the most talked about pops they have presented in years past. Known for using local, organic ingredients and their highly unusual flavors such as Ume-Thai Basil, Pickled Green Mango or Guava Hawaiian Chili, they're bringing back the Chocolate ice cream with chocolate covered candied Spam Pop and yes, the Saimin Pop. Honey sweetened, from-scratch dashi sorbet, with candied char siu, green onion, and candied Spam.

Directly across the street from the International Market Place, you will find most of their Grand Lanai restaurants out there for people to stop by and visit. Taste the spammy creations from Eating House 1849 by Roy Yamaguchi, Michael Mina's



Booths like this one will line Kalakaua Avenue. Pictures courtesy of SPAM® JAM Hawaii

STRIPSTEAK, Flour & Barley Brick Oven Pizza, Kona Grill will all be out there. There will even be a tent for The STREET, A Michael Mina Food Hall which is set to open next month. Be one of the first to see what they are going to have to offer, in Spam version of course.

A complete list of performers, vendors, restaurants and menu items will be available on their website once everything has been confirmed. Go to SpamJamHawaii.com for all the details and head down to Waikiki to get your Spam on! ~ Pam

Mahalo for your continued support!

JOIN OUR
GUEST REFERRAL PROGRAM



Our program is simple!

For every 25 guests referred,
Ruth's Chris Steak House will send you
a \$50.00 dining certificate.

Please contact Emi Espinda if you have any
questions at eespinda@direstaurants.com

OPEN DAILY FROM 4:30PM
HAPPY HOUR DAILY IN OUR LOUNGE | 4:30PM – 7PM
PRIME TIME MENU DAILY | 4:30PM – 6PM
WINE WEDNESDAYS | 25% OFF BOTTLES OF WINE



Restaurant Row | 808.599.3860
Waikiki Beach Walk | 808.440.7910

WWW.RUTHSCHRISHAWAII.COM   



**SOMETHING NEW.
SOMETHING CLASSIC.**

Open Daily 11am - 10pm

Happy Hour Daily in our lounge 3pm - 6pm & 8pm - 10pm
Vino Thursdays 25% Off Bottles of Wine

**INQUIRE ABOUT OUR
GUEST REFERRAL PROGRAM!**

Our program is simple!

For every 10 complimentary dessert cards redeemed
(WITH YOUR NAME ON THE CARD),

Romano's Macaroni Grill will send you a
\$25.00 dining certificate that may be used
at our Oahu restaurant.

Please contact Emi Espinda if you have any
questions at eespinda@direstaurants.com

**ROMANO'S
Macaroni
GRILL**

Ho'okipa Terrace at Ala Moana Center
808.356.0300

WWW.MACARONIGRILL.COM



Herringbone

FISH MEATS FIELD

CALIFORNIA COASTAL CUISINE

SAYS ALOHA TO WAIKIKI SPRING 2017

INTERNATIONAL MARKET PLACE – GRAND LANAI – (808) 797-2435 – HERRINGBONEEATS.COM

唐茶苑 YAUATCHA

The Hakkasan Group celebrated the opening of their first restaurant in Hawaii, Yauatcha, a dim sum teahouse and patisserie offering contemporary Cantonese cuisine and European inspired desserts. They welcomed concierge at a private event offering samplings of their menu items and signature cocktails. Located at the International Market Place, see the menu at yauatcha.com/waikiki. 739-9318.

HILTON HAWAIIAN VILLAGE™

WAIKIKI STARLIGHT LUAU

SUNDAY–THURSDAY
5:30PM

WAIKIKI'S ONLY FIVE-NIGHT-A-WEEK
LUAU UNDER THE STARS

- ◆ Hawaiian and local cuisine
- ◆ Acrobatic fire knife dancers and traditional hula performers
- ◆ Conveniently located in Waikiki



Call (808) 941-5828
to make reservations.





Chef's Corner

3660 on the Rise Chef de Cuisine Lydell Leong

Lydell Leong is your classic homegrown success story. A local boy, who studied and trained on island, and literally worked his way up the line over the past 20 years. Chef Russell Siu recognized the spark in him and gave him the leeway to learn through trial and error. To hear Chef Lydell speak about the restaurant that 'raised' him and the passion he has for the new and old dishes there has given a tried and true favorite a new lease and a reason to visit again.

What is your first childhood food memory?

I have many memories that involve food. What comes to mind is my grandmother making a steamed pork hash dish filled with beaten egg. I was in awe. She made it in such a large pot. But I soon understood why, because it fed so many family members. The sheer size of the operation makes it very memorable for me.

What was your first job in the industry?

My first real job was at a local club that had just transitioned from a fine dining restaurant. I was a day time prep cook and a night time line cook. The chef was very helpful to work around my culinary school schedule. I learned so much from both places at the same time.

Who would you consider your mentor and why?

Russell Siu has always been a great mentor to me. He is a great wealth of information & insight, and has a unique style of teaching. I've always appreciated how he affords me to make mistakes and lets me learn from them.

How would you describe your style of cooking?

If I had to, I would describe my cooking style as Pacific Rim. I am very fortunate to exist in an environment that isn't shackled.

Where do you find your culinary inspiration?

I tend to find inspiration anywhere. I never know what or when, even a single ingredient, may spark an idea. Reading helps me a lot.

When did you start working at 3660 on the Rise?

I started working here in October 1996 as a pantry cook. I made salads, cold appetizers, and plated desserts. I worked my way up the line from there.

When were you promoted to Chef de Cuisine?

I don't actually recall when I earned the title of chef de cuisine. In 1999, there was a staff change & I was fortunate enough for Chef Russell to offer to teach me the operations of the restaurant.

Favorite ingredient you like to work with and why?

I really can't pick a favorite. To me, every ingredient is unique on their own and leads down a different path.

3660 celebrates 25 years this September, any plans?

Right now we're in the planning stage of celebrating our 25th anniversary with special events starting in the summer and ending with a special Anniversary Dinner in September. September is our actual anniversary month, so we are planning to have different offers every week throughout the month.

You recently refreshed the menu. How did you do it?

This past menu change has been especially challenging. We wanted to freshen up some of our classic dishes that have been on the menu from day 1 to give them new life.

After so many years, certain menu items have a very loyal following. Which sacred items are 'safe'?

After 25 years, there are a few dishes that I don't have the courage to alter! LOL. The ahi katsu, the rack of lamb, the New York steak, the Chinese style fish, the lemon miso dressing...those dishes have been on the menu from the beginning. I have the utmost respect for them and try my best to make sure they are served the same way as they have always been enjoyed.

What's your favorite item on the menu these days?

If I had to pick a favorite dish on the menu, it would be the Maine lobster won ton appetizer. It started out as a simple amuse bouche. It has since transformed many times, with Chef Russell's guidance and now it's one of our most popular menu items.

What would surprise people about being a chef?

People are surprised by how little I eat. As chefs we are surrounded by food all hours of the day. I do get hungry, but sometimes, I just don't have the time to eat.

What do you cook at home that you don't at work?

Cooking at home is no different from cooking at work. I don't really have too many opportunities to cook at home. But when I do, it's very simple & I make a very big mess. It's usually whatever my kids want to eat.

What would we always find in your fridge at home?

Leftovers! I'm guilty of cooking things in very large quantities. But I really don't mind eating the same thing for a few days. To me, some things taste better a few days after it's cooked.

What do you like to do on your time off?

I love to spend my spare time with my wife & kids. They are so much fun. They see things from a different point of view than I, & teach me so much and give me inspiration.

What advice would you give a culinary student?

I would advise students to learn as much as they can, from whomever they can. It's important to learn what to do, but it's equally important to learn what not to do.

Is there any other else you would like to share?

Thank you for giving me this opportunity as I am humbled and fortunate everyday for what I have worked so hard to achieve.



Crispy Shrimp with Ginger and Scallion

Serves 4

Ingredients:	1/4 cup green onions, finely chopped
12 shrimp, size 21-25 peeled & deveined, tail on	1 ounce gin
1/2 cup rice flour	3 cups oil
6 cloves garlic, finely chopped	Kosher salt & pepper to taste

Directions: Season shrimp with salt and pepper. Toss in rice flour and shake off excess. Heat oil on stove reserving 3 Tbsp. for sauteeing garlic and scallion. Oil should be about 350° degrees. Add shrimp and fry for about 1 1/2 minutes. Remove and place in a bowl. In a fry pan over medium high heat add in the remaining 3 Tbsp. of oil. Add in garlic and sauté until light brown. Add in scallions and gin. Let gin reduce by half. Pour mixture over shrimp and toss. Enjoy!

3660 on the Rise is located at 3660 Waiialae Avenue

Open from 5:30 - 8:30 p.m. Tuesday - Sundays. Closed Mondays. • Phone: 737-1177

Web: 3660ontherise.com • Instagram/FB: @3660ontherise • Twitter: @3660Kaimuki



CALL IT EARLY BIRD,
CALL IT NIGHTCAP.

HAPPY HOUR IS **20% OFF**
THE ENTIRE MENU

10X A WEEK!

MON-FRI 3-6PM & SUN-THU 10PM-MIDNIGHT



giovannipastrami.com 808-923-2100
227 Lewers Street in Waikiki

*Happy Hour is dine-in only. Visit us for details.

BEST OF KAUAI NEW!

One Day Helicopter + Land Combo

Fly to Kauai, see the island by land & helicopter, return to Oahu in a single day!

Booking your Gray Line Hawaii Tour is Easy!
808.833.3000
POLYNESIAN ADVENTURE TOURS

Let's be Together...

DINING ▸ ENTERTAINMENT ▸ PAU HANA ▸ EAT ▸ DRINK ▸ BE MERRY ▸ HAPPY HOUR

MONDAY

Barefoot Beach Café at Queen's Beach 924-2233
Contemporary Ukulele
 Sonny Kapu 6-8:30pm

Chart House Waikiki 941-6660
Live Contemporary Hawaiian
 Camarillo Brothers 6:30-9:30pm

Cheesecake Factory 924-5001
Classic Hawaiian
 Christian Yrizarry Duo 8-11pm

Duke's Canoe Club Waikiki 922-2268
Live Contemporary Hawaiian
 Taz Vegas 4-6pm
 Ellsworth Simeona 9:30-12am

Hard Rock Cafe 955-7383
Live Contemporary
 Candy Bullets (or others) 9-11pm

House Without a Key 923-2311
Live Hawaiian & Hula by Skyler Kamaka
 DeLima Ohana 5:30 - 8:00pm

Hula Grill 923-HULA
Live Contemporary Hawaiian
 Eric Lee 7-9pm

Kani Ka Pila Grille 924-4992
Live Contemporary Hawaiian
 Sean Naauao 6-9pm

LBLE at the Hilton Waikiki Beach Hotel 922-0811
Live Contemporary Acoustic Hits
 Sean Cleland 6-9pm

Lewers Lounge 923-2311
Live Contemporary & Light Jazz
 Noly Pa'a 8:30-12:30am

LuLu's 926-5222
Live Contemporary / Industry night 50% off
 Jason Laeha 6-9 p.m.

Mahina & Sun's 923-8882
Kanikaplia Jam Poolside on the Lanai
 Kimo Opiana Jr. 7-9pm

Mai Tai Bar at the Royal Hawaiian 923-7311
Live Contemporary Hawaiian with Hula Dancer
 Dave Watanabe 8-10 p.m.

Rumfire 921-4600
Solo Contemporary Guitarist
 Jeremy Cheng 5-8pm

Signature Prime Steak 949-3636
Contemporary Pianist in the bar
 Isao Motomochi 6-9pm

Sky Waikiki 979-7590
Live Contemporary
 Yoza 6-9pm

The Edge at the Sheraton 921-4600
Live Hawaiian music with a firedancer at 7:30 p.m.
 Meheu Duo 6:30-8:30pm

The Study at the Modern 943-5800
Live Contemporary Hawaiian
 Kaleo 7-10pm

Tiki's Grill & Bar 923-TIKI
Live Contemporary Hawaiian
 P & L Experience 6-8:30pm
 The Kristi Masuhara Band 9-11pm

Tommy Bahama Restaurant 923-8785
Live Contemporary Hawaiian
 Johnny Helm 6-9pm

Tropics Bar & Grill 949-4321
Live Contemporary Hawaiian
 Acoustik Playground 5:30-8:30pm

TUESDAY

Barefoot Beach Café at Queen's Beach 924-2233
Contemporary Ukulele
 Shaka Madali 6-8:30pm

Bin1901 at the Moana 921-4600
Piano Wine Bar
 Scott Smith 6:30-9:30pm

Chart House Waikiki 941-6660
Live Contemporary Hawaiian
 Kumuhau 6:30-9:30pm

Cheesecake Factory 924-5001
Classic Hawaiian
 Local Uprising Duo 8-11pm

Duke's Canoe Club Waikiki 922-2268
Live Contemporary Hawaiian
 Haumea Warrington & Mike 4-6pm
 Ellsworth Simeona 9:30-12am

Hard Rock Cafe 955-7383
Live Contemporary
 Piranha Brothers 9-11pm

House Without a Key 923-2311
Live Hawaiian & Hula by Radasha Ho'ohuli
 Po'okela 5:30 - 8:00pm

Hula Grill 923-HULA
Live Contemporary Hawaiian
 Kamuela Kahoano 7-9pm

Kani Ka Pila Grille 924-4992
Live Contemporary Hawaiian
 Weldon Kekauoha 6-9pm
 Kaiao (4/4) 6-9pm

LBLE at the Hilton Waikiki Beach Hotel 922-0811
Live Contemporary Funk, Jazz, Hip Hop & Reggae
 Jason Laeha 6-9pm

Lewers Lounge 923-2311
Live Contemporary & Light Jazz
 Maggie Herron & Rocky Holmes 8:30-12:30am

LuLu's 926-5222
Live Contemporary
 Johnny Helm 6-9pm

Mahina & Sun's 923-8882
Bossa Nova Poolside on the Lanai
 Sandy Tsukiyama 7-9pm

Mai Tai Bar at the Royal Hawaiian 923-7311
Live Contemporary Hawaiian with Hula Dancer
 Kapala Duo 6:30-9:30pm

Rumfire 921-4600
Solo Contemporary Guitarist
 Randy Allen 5-8pm

Signature Prime Steak 949-3636
Contemporary Pianist in the bar
 James Woo 6-9pm

Sky Waikiki 979-7590
Live Contemporary
 John Akapo 6-9pm

The Edge at the Sheraton 921-4600
Live Hawaiian music with a firedancer at 7:30 p.m.
 Ho'okani Duo 6:30-8:30pm

The Study at the Modern 943-5800
Live Contemporary Hawaiian

Alex Oasay & Jeremy Cheng 7:30-10:30pm

Tiki's Grill & Bar 923-TIKI
Live Hawaiian - \$2 Taco Tuesdays
 K.B. Riley 5:30-8:30pm
 Sani & Friends 9-11pm

Tommy Bahama Restaurant 923-8785
Live Contemporary Hawaiian
 Chris Mercado 6-9pm

Tropics Bar & Grill 949-4321
Live Contemporary Hawaiian
 Kailua Bay Buddies 5:30-8:30pm

WEDNESDAY

Barefoot Beach Café at Queen's Beach 924-2233
Instrumental Ukulele
 Sonny Kapu 6-8:30pm

Bin1901 at the Moana 921-4600
Piano Wine Bar
 Scott Smith 6:30-9:30pm

Chart House Waikiki 941-6660
Live Contemporary Hawaiian
 Tito Berinobis & David Kauahikaua 6-10:30pm

Cheesecake Factory 924-5001
Classic Hawaiian
 Kimo Artis Duo 8-11pm

Duke's Canoe Club Waikiki 922-2268
Acoustic, Soul, R&B
 Haumea Warrington 4-6pm
 Ellsworth Simeona 9:30-12am

Gordon Biersch 599-4877
Jazz Wednesdays
 Varying Artists 6:30-9:30pm

Hard Rock Cafe 955-7383
Live Contemporary
 Saloon Pilots (or others) 9-11pm

House Without a Key 923-2311
Live Hawaiian & Hula by Lauren Matsumoto
 Pa'ahana 5:30 - 8:00pm

Hula Grill 923-HULA
Live Contemporary Music
 Brandon Serrano 7-9pm

Hy's Steak House 922-5555
Live Soft Contemporary
 Audy Kimura 6:30-10pm

Kani Ka Pila Grille 924-4992
Live Contemporary Slack Key
 Ben & Malia 3-5pm
 Mike Kaawa 6-9pm

LBLE at the Hilton Waikiki Beach Hotel 922-0811
Live Contemporary Funk, Jazz, Hip Hop & Reggae
 Izik 6-9pm

Lewers Lounge 923-2311
Live Contemporary & Light Jazz
 Maggie Herron & Rocky Holmes 8:30-12:30am

LuLu's 926-5222
Live Contemporary Hawaiian
 Mango Season 6-9am

Mahina & Sun's 923-8882
Jazz, Pop & Rock Poolside on the Lanai
 Verge & Paula 7-9pm

Mai Tai Bar at the Royal Hawaiian 923-7311
Live Contemporary Hawaiian with Hula Dancer
 Eric Lee Duo 6:30-9:30pm

Roy's Hawaii Kai 396-7697

E Pili Kākou

DINING ▶ ENTERTAINMENT ▶ PAU HANA ▶ EAT ▶ DRINK ▶ BE MERRY ▶ HAPPY HOUR

Acoustic & Slack Key Top 40
Dayton Watanabe 6:30-9:30pm
Rumfire 921-4600
Solo Contemporary Guitarist
Alex Oasay 5-8pm
Signature Prime Steak 949-3636
Contemporary Pianist in the bar
Pierre Grill 6-9pm
Sky Waikiki 979-7590
Live Contemporary
Randy & Kanoe 6-9pm
The Edge at the Sheraton 922-4422
Live Hawaiian music with a firedancer at 7:30 p.m.
Keoni Ku Duo 6:30-8:30 pm
The Study at the Modern 943-5800
Live Contemporary Hawaiian
Melanie and Drew 6:30-9:30pm
Tiki's Grill & Bar 923-TIKI
Live Contemporary - 1/2 off Wine Wednesdays
Canoes for Rent 5:30-8:30pm
Johnny Helm 9-11pm
Tommy Bahama Restaurant 923-8785
Live Contemporary Hawaiian
Randy Allen 6-9pm
Tropics Bar & Grill 949-4321
Live Contemporary Rock
Acoustik Playground 5:30-8:30pm

THURSDAY

Barefoot Beach Café at Queen's Beach 924-2233
Instrumental Ukulele
Shaka Madali 6-8:30pm
Bin1901 at the Moana 921-4600
Piano Wine Bar
Scott Smith 6:30-9:30pm
Chart House Waikiki 941-6660
Live Contemporary Hawaiian
Tito Berinobis 6:30-10pm
Cheeseburger Waikiki 941-2400
Contemporary / Old School Rock
Alex Oasay 6:30-9:30pm
Cheesecake Factory 924-5001
Classic Hawaiian
Alika Souza Duo (4/6, 4/20) 8-11pm
Danny Carvalho Duo (4/13, 4/27) 8-11pm
Duke's Canoe Club 922-2268
Live Contemporary Hawaiian
Haumea Warrington 4-6pm
Denny Ono Duo (4/6) 9:30-midnight
Twelve Noon & Midnite (4/13) 9:30-midnight
Local Uprising (4/20) 9:30-midnight
Scott Magz & Brady K (4/27) 9:30-midnight
Hard Rock Cafe 955-7383
Live Contemporary
Kailua Bay Buddies 9-11pm
House Without a Key 923-2311
Live Hawaiian & Hula by Radasha Ho'ohuli
Pa'ahana 5:30 - 8:00pm
Hula Grill 923-HULA
Live Contemporary Hawaiian
Kamuela Kahoano 7-9pm
Hy's Steak House 922-5555
Live Soft Contemporary
Audy Kimura 6:30-10pm

Kani Ka Pila Grille 924-4992
Live Contemporary Hawaiian
Jeff Rasmussen & Robi K 3-5pm
Kawika Kahiapo 6-9 pm
LBLE at the Hilton Waikiki Beach Hotel 922-0811
Live Contemporary Pop/Rock
Sunway 6-9pm
Lewers Lounge 923-2311
Contemporary Jazz
Maggie Herron & Rocky Holmes 8:30-12:30am
LuLu's 926-5222
Live Contemporary Hawaiian
Local Uprising 6-9pm
Mahina & Sun's 923-8882
Mellow Acoustic Sounds Poolside on the Lanai
Keith Omizo 7-9pm
Mai Tai Bar at the Royal Hawaiian 923-7311
Live Contemporary Hawaiian with Hula Dancer
Delima Ohana 6:30-9:30pm
Michel's at the Colony Surf 923-6552
Live Slack Key
Jeff Peterson 7:30-10:00pm
Roy's Hawaii Kai 396-7697
Acoustic Hawaiian Guitar
Steve English 6:30-9:30pm
Rumfire 921-4600
Solo Contemporary Guitarist
Johnny Helm 5-8pm
Signature Prime Steak 949-3636
Contemporary Pianist in the bar
Isao Motomochi 6-9pm
Sky Waikiki 979-7590
Live Contemporary
Tahiti Rey 6-9pm 5-8pm
The Edge at the Sheraton 921-4600
Live Hawaiian music with a firedancer at 7:30 p.m.
Christian Yrizzary Duo 6:30-8:30pm
The Study at the Modern 943-5800
Live Contemporary Hawaiian
Simple Souls 6:30-9:30pm
Tiki's Grill & Bar 923-TIKI
Hot Hula Thursdays - hula dancers perform
Malu the Band 5:30-7:30pm
Ellsworth Simeona 8:30-10:30pm
Tommy Bahama Restaurant 923-8785
Live Contemporary Hawaiian
Chris Mercado 6-9pm
Tropics Bar & Grill 949-4321
Live Contemporary Hawaiian
Nohelani Cypriano 5:30-8:30pm

FRIDAY

Barefoot Beach Café at Queen's Beach 924-2233
Live Contemporary Hawaiian with Beach BBQ
Art Kalahiki & Friends 5:30-8:30pm
Bin1901 at the Moana 921-4600
Piano Wine Bar
Scott Smith 6:30-9:30pm
Chart House Waikiki 941-6660
Live Contemporary Hawaiian
Mark Yim's Pilikia I 6-9pm
Mark Yim's Pilikia II 9:30-12:30am
Cheeseburger Waikiki 941-2400
Contemporary Hawaiian

Aku 6:30-9:30pm
Cheesecake Factory 924-5001
Live Contemporary
Johnny Helm Duo 8-11pm
Dave & Busters 589-2215
Pau Hana Fridays Live Local Bands
Varying Hawaiian Artists 6-8pm
Duke's Canoe Club Waikiki 922-2268
Live Contemporary Hawaiian
Maunaula 4-6pm
Christian Yrizzary Duo (4/7) 9:30-12am
Kona Chang Duo (4/14) 9:30-12am
Alika Souza Duo (4/21) 9:30-12am
Kevin & Stan (4/28) 9:30-12am
Giovanni Pastrami 923-2100
Live Acoustic
Varying Artists 10pm-last call
Hard Rock Cafe 955-7383
Live Contemporary
The Fresh Preps 10-12am
House Without a Key 923-2311
Live Hawaiian & Hula by Kanoe Miller
Hiram Olsen Trio 5:30 - 8:00pm
Hula Grill 923-HULA
Aloha Friday Lunch Luau with hula dancer
David Asing 12:30-2:30pm
Keoki & Russell 7-9pm
Hy's Steak House 922-5555



you are an important part of
bills 'ohana
concierges & guest services staff
receive our 'ohana discount
of 20% off your entire bill
with valid id
does not apply to happy hour
may not be combined with other offers.



Let's be Together...

DINING ▸ ENTERTAINMENT ▸ PAU HANA ▸ EAT ▸ DRINK ▸ BE MERRY ▸ HAPPY HOUR

Live Soft Contemporary
Audy Kimura 6:30-10pm
Japengo Steak & Seafood 923-1234
Contemporary, Pop, Rock
Joanna G 5-9pm
Kani Ka Pila Grille 924-4992
Live Hawaiian Contemporary
Christian Yrizzary 3-5pm
Ka Hehena 6-9pm
LBL E at the Hilton Waikiki Beach Hotel 922-0811
Live Contemporary Pop/Rock
Sunway 6-9pm
Lewers Lounge 923-2311
Live Contemporary Jazz
Maggie Herron & Rocky Holmes 8:30-12:30am
Mahina & Sun's 923-8882
Slack Key Poolside on the Lanai
Jeff Rasmussen 7-9pm
Mai Tai Bar at the Royal Hawaiian 923-7311
Live Contemporary Hawaiian with Hula Dancer
Kapala Duo 6:30-9:30pm
Michel's at the Colony Surf 923-6552
Live Slack Key Stylings & Jazz
Jeff Peterson & Ernie Provencher 6:30-10pm
Roy's Hawaii Kai 396-7697
Keyboardist
Brian Robert Shaw 6:30-9:30pm
Roy's Ko Olina 676-7697
Slack Key Guitar
Chris Rego 5:30-8pm
Rumfire 921-4600
Solo Contemporary Guitarist
Tim Rose 5-8pm
Signature Prime Steak 949-3636
Contemporary Pianist in the bar
Grant Carvalho 6-9pm
Sky Waikiki 979-7590
Live Contemporary
John Akapo 5-8pm
The Edge at the Sheraton 921-4600

Live Hawaiian music with a fire dancer at 7:30 p.m.
Delima Ohana Duo 6:30-8:30pm
The Study at the Modern 943-5800
Live Contemporary Hawaiian
Tahiti Rey 6:30-9:30pm
Tiki's Grill & Bar 923-TIKI
Live Contemporary Hawaiian
Randy Allen 5-7pm
Vaihi 7:30-9:30pm
The Kristi Masuhara Band 10:30-midnight
Tommy Bahama Restaurant 923-8785
Live Contemporary Hawaiian
Chris Murphy 6-9pm
Tropics Bar & Grill 949-4321
Live Contemporary Hawaiian
Piranha Brothers 3:30-6:30pm
Nohelani Cypriano 8-10:30pm

SATURDAY

Barefoot Beach Café at Queen's Beach 924-2233
Beach BBQ with Live Contemporary Hits
Johnny Kukui 5:30-8:30pm
Bin1901 at the Moana 921-4600
Piano Wine Bar
Scott Smith 6:30-9:30pm
Chart House Waikiki 941-6660
Live Contemporary Hawaiian
Tito Berinobis & Billy Beimes 7-12pm
Cheeseburger Waikiki 941-2400
Contemporary Hawaiian
Sean Cleland 6:30-9:30pm
Cheesecake Factory 924-5001
Classic Hawaiian
Dennis McClees Duo 8-11pm
Duke's Canoe Club Waikiki 922-2268
Live Hawaiian Entertainment
Beach 5 (4/1) 4-6pm
Vaihi (4/8) 4-6pm
Ikena (4/15) 4-6pm
Kailua Bay Buddies (4/22) 4-6pm
Kapena (4/29) 4-6pm
Jeff James Duo (4/1) 9:30-12am
Camarillo Brothers (4/8, 4/22) 9:30-12am
Mike Tulba Duo (4/15) 9:30-12am
Darrell Aquino Duo (4/29) 9:30-12am
Giovanni Pastrami 923-2100
Live Acoustic
Varying Artists 10pm-last call
Hard Rock Cafe 955-7383
Live Contemporary
EMKE 10-12am
Piranha Brothers (4/29) 10-12am
House Without a Key 923-2311
Hawaiian & Hula by Kanoë Miller
Hiram Olsen Trio 5:30-8:00pm
Hula Grill 923-HULA
Live Traditional Hawaiian with dancer
Kaipo Dabin & friends 7-9pm
Hy's Steak House 922-5555
Live Soft Contemporary
Audy Kimura 6:30-10pm
Japengo Steak & Seafood 923-1234
Contemporary, Pop, Rock
Dave Toma 5-9pm

Kani Ka Pila Grille 924-4992
Live Contemporary Hawaiian
Puuloa 3-5 pm
Kupaoa (4/15) 3-5 pm
Kamakakehau Fernandez (4/22) 3-5 pm
Uheuhene (4/29) 3-5 pm
Ho'okena 6-9pm
Waiamanalo Sunset Band (4/8) 6-9pm
Nathan Aweau (4/22) 6-9pm
LBL E at the Hilton Waikiki Beach Hotel 922-0811
Live Contemporary Blues & R&B
Tahiti Rey 6-9pm
Lewers Lounge 923-2311
Live Contemporary Jazz
Maggie Herron & Rocky Holmes 8:30-12:30am
Mahina & Sun's 923-8882
Soul Poolside on the Lanai
Maryanne Ito 7-9pm
Mai Tai Bar at the Royal Hawaiian 923-7311
Live Contemporary Hawaiian with Hula Dancer
Kapala Duo 6:30-9:30pm
Michel's at the Colony Surf 923-6552
Live Contemporary Slack Key & Jazz
Jeff Peterson 7-11pm
Roy's Hawaii Kai 396-7697
Acoustic Guitar
Jimmy Funai 6-9:30pm
Roy's Ko Olina 676-7697
Slack Key Guitar
Chris Rego 5:30-8pm
Rumfire 921-4600
Solo Contemporary Guitarist
Sean Cleland 5-8pm
Signature Prime Steak 949-3636
Contemporary Pianist in the bar
Grant Carvalho 6-9pm
Sky Waikiki 979-7590
Live Contemporary
John Akapo 6-9pm
Sunrise Pool Bar at the Modern 943-5800
Live Contemporary Hawaiian
Kainalu 5-8pm
The Edge at the Sheraton 921-4600
Live Hawaiian music with a fire dancer at 7:30 p.m.
Tino Jacobs Duo 6:30-8:30pm
Tiki's Grill & Bar 923-TIKI
Live Contemporary Hawaiian & Reggae
Johnny Helm 5-7pm
Guidance (or others) 7:30-9:30pm
Ellsworth & Piko 10-midnight
Tommy Bahama Restaurant 923-8785
Live Contemporary Hawaiian
Chris Murphy 6-9pm
Tropics Bar & Grill 949-4321
Live Contemporary Hawaiian
Henry Kapono 4-6pm
Juke Joint 6:30-9:30pm

SUNDAY

Barefoot Beach Café at Queen's Beach 924-2233
Contemporary Hawaiian
Paul Wilcox 11am-2pm.
Chart House Waikiki 941-6660
Live Contemporary Hawaiian



IL LUPINO
TRATTORIA & WINE BAR

15% OFF FOR ALL CONCIERGES & GSA
Il Lupino is pleased to extend a 15% discount to all Concierges and Guests Services Staff (Front Desk, Valet, Porters, etc.). Must show your work I.D. or business card to receive the discount. Not applicable on liquor or specials.

ROYAL HAWAIIAN CENTER • VALIDATED PARKING
breakfast • lunch • tapas • dinner
www.ilupino.com • 808.922.3400

E Pili Kākou

DINING ▶ ENTERTAINMENT ▶ PAU HANA ▶ EAT ▶ DRINK ▶ BE MERRY ▶ HAPPY HOUR

Dean & Dean	6-9pm	
Cheesecake Factory		924-5001
<i>Classic Hawaiian</i>		
Chris Murphy Duo	8-11pm	
Duke's Canoe Club Waikiki		922-2268
<i>Live Hawaiian Entertainment</i>		
Henry Kapono	4-6pm	
Jai Rodgers Duo (4/2)	9:30-12am	
Kapena Delima Duo (4/9)	9:30-12am	
Derrick Lee Duo (4/16)	9:30-12am	
Chris Mercado (4/23)	9:30-12am	
Hard Rock Cafe		955-7383
<i>Live Contemporary</i>		
Analog (or others)	9-11pm	
House Without a Key		923-2311
<i>Live Hawaiian & Hula by Debbie Nakanelua</i>		
Pa'ahana	5:30 - 8:00pm	
Hula Grill		923-HULA
<i>Live Traditional Hawaiian with dancer</i>		
Art Kalahiki Duo	7-9pm	
Japengo Steak & Seafood		923-1234
<i>Contemporary, Pop, Rock</i>		
Jon Basebase	5 - 9pm	
Kani Ka Pila Grille		924-4992
<i>Live Contemporary Hawaiian</i>		
Maunaula	6-9pm	
Brother Noland (4/2)	6-9pm	
Kuana Torres Kahele (4/30)	6-9pm	
Kelley O'Neil's		926-1777
<i>Live Irish Music</i>		
Various Celtic Bands	4-7pm	
LBLE at the Hilton Waikiki Beach Hotel		922-0811
<i>Live, Energetic Mix of Pop and Rock Hits</i>		
Maryann Ito	6-9pm	
Lewers Lounge		923-2311
<i>Live Contemporary & Light Jazz</i>		
Noly Pa'a	8:30pm - 12am	
LuLu's		926-5222
<i>Acoustic R&B</i>		
Simple Soulz	7-10pm	
Mahina & Sun's		923-8882
<i>Live Jazz on the Lanai</i>		
Jegaan Faye	7-9pm	
Mai Tai Bar at the Royal Hawaiian		923-7311
<i>Live Contemporary Hawaiian with Hula Dancer</i>		
Eric Lee Duo	6:30-9:30pm	
Michel's at the Colony Surf		923-6552
<i>Classical Slack Key & Jazz Stylings</i>		
Jeff Peterson	6-9pm	
Roy's Ko Olina		676-7697
<i>Slack Key Guitar</i>		
Chris Rego	5:30-8pm	
Rumfire		921-4600
<i>Live Contemporary Hawaiian</i>		
Kamuella Kahoano	5-8pm	
Signature Prime Steak		949-3636
<i>Contemporary Pianist in the bar</i>		
Isao Motomochi	6-9pm	
Sky Waikiki		979-7590
<i>Live Contemporary</i>		
Da Push-O-Verse	6-9pm	
The Edge at the Sheraton		922-4422

<i>Live Hawaiian music with a firedancer at 7:30 p.m.</i>		
Ellsworth Simeona Duo	6:30-8:30p	
The Study at the Modern		943-5800
<i>Live Contemporary Hawaiian & Jazz</i>		
Jeremy Cheng	6-9pm	
Smooth Jazz (vaying artists)	10-2am	
Tiki's Grill & Bar		923-TIKI
<i>Live Contemporary Hawaiian</i>		
Kapu the Band	2:30 - 5:30pm	
Vaihi	6-8pm	
Ellsworth & Piko	9-11pm	
Tommy Bahama Restaurant		923-8785
<i>Live Contemporary Hawaiian</i>		
Johnny Helm	6-9pm	
Tropics Bar & Grill		949-4321
<i>Live Contemporary Rock & Hawaiian</i>		
Piranha Brothers	2-5pm	
Beach 5	5:30 - 8:30pm	
Uncle's Fish Market & Grill		275-0063
<i>Live Slack Key</i>		
Jeff Peterson	5:30-8:30pm	



Hot Lines

Here's a few numbers for you to find out the latest in live music from places that change daily or don't update us regularly, since we can't possible list them all.

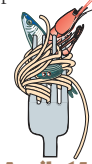
Gordon Biersch	599-4877
Irish Rose Saloon	947-3414
Kelley O'Neil's	926-1777
Mai Tai Bar Ala Moana	947-2900
Moose McGillycuddy's	923-0751

Dining Dish



The Honolulu restaurant scene is bustling! There is so much to talk about, I'm only going to be able to briefly mention things in order to squeeze it all in. We'll start with an apology. I misread the **Giovanni Pastrami** press release and passed on some incorrect info last month. To clarify, happy hour is Mon-Fri from 3-6 p.m. and Sun-Thu 10 p.m.- close. It's ten times a week, not twice daily. Plus they offer 20% off the entire food and bar menu during happy hour. Off everything, not just the drink menu. Sorry about that. • Following Giovanni's breakfast is good at any time thought process, **Hula Grill** has begun serving brunch until 2 p.m. daily. Patrons looking for everything from a salad, a burger, a waffle or a benedict, will find an expanded menu offering lunch and breakfast specialties seven days a week. 923-4852 • **Wai'olu Ocean View Lounge** at Trump International Hotel Waikiki recently added a Sushi Bar offering a wide selection of nigiri and maki roll options. Open Tuesday-Saturday from 5-10 p.m. with live music Thursday-Saturdays. Call 683-7456 or visit trumphotels.com/waikiki. • Michelin-starred chef **Takeshi Kawasaki's** iconic sushi bar, **Maru Sushi**, in Sapporo, opened its second location in Honolulu last month. The exclusive nine-seat counter offers a \$180 course

that features 6-7 appetizers and about 14 pieces of nigiri, and a \$220 course with 6-7 appetizers and about 16 pieces of nigiri with elevated ingredients. Located in the new building next to Micronesia Mart, reservations are offered at 5 p.m., 5:15 p.m., 7:30 p.m., and 7:45 p.m. 951-4445. • A popular izakaya restaurant from Japan, **Tsukada Nojo** opened its first Hawaii location in the same building. 951-4444. • **Peter Kim**, the man behind Yummy's BBQ and Signature Steak & Seafood opened a new shabu shabu restaurant, **Umami-ya Restaurant**, next door to Liliha Bakery on Nimitz. A five-course meal starts at \$25. Get the house broth, it was delicious! Open for dinner daily from 5 - 10 p.m. 367-1388. • Have you been to **Kuhio Beach Grille** yet at the Marriott? It's Waikiki's only whiskey and bourbon lounge with a tasty food menu. Find the menu through Marriott's website or call 921-5171. • I simply don't have room to do justice describing the new menu I tried at **3660 on the Rise**, the meal I sat down for at **Yauatcha** or the preview dinner I was lucky enough to attend for **Herringbone**, opening next month at the International Market Place. Amazing, all of them. I'm behind on my Facebook restaurant posts. Keep your eyes on our FB page for detailed posts and pictures from each dinner. ~ Pam



Dining Calendar

April 14: Westin Moana presents their monthly #LoveofLibations interactive beverage event. This month's theme is a Thai take on the classic Hawaiian Mai Tai. Includes 3 drinks and two apps. \$30. Vintage 1901. 5:30 - 7 p.m. 921-4600.

April 15: High Tea with the Bunny The Easter Bunny stops by tea at the Veranda. 2- 5 p.m. \$60+. 739-8760 or restaurants@kahalaresort.com

"I like it best at night, when the city skyline sparkles under starry skies and live music is offered. The best part is it is incredibly priced...and the food is absolutely delicious...a hint of Hawaiian culture along with fantastic views and flavors!"
—Tad Polak, Yelp, Maui (January 17)

Casual Beachfront Dining
 Open Daily 7am - 8:00pm
 Live Music Nightly 5:30-8:30pm

FULL MENU, CALENDAR, INFO
Dance@BeachCafe.com
 808.924.5535 (H.C.A.F.E.)

EVENTS ARE SUBJECT TO CHANGE WITHOUT NOTICE.

APRIL CALENDAR OF EVENTS

Continuing Events

MONDAY – FRIDAY LYON ARBORETUM TOURS

The lush gardens at the top of the University of Hawai'i Manoa are open for guided tours daily. Knowledgeable guides will introduce the highlights of the botanical rainforest's 193.6 acres. Reservations required. Limit of 12 participants daily. Donations accepted. 988-0461.

MONDAY-FRIDAY FOSTER BOTANICAL GARDENS

Guided garden tours of rare and beautiful plants from tropical regions throughout the world. Foster Botanical Gardens, 50 N. Vineyard. 1 p.m. Adults: \$5. Reservations recommended. 522-7066.

TUESDAYS TOURS OF THE HAWAII THEATRE

Get a behind-the-scenes tour of this historic theatre including history, architecture, and a performance on the 1922 Robert Morton theatre organ. Hawaii Theatre. 11 a.m. – 12 p.m. \$10. 528-0506.

TUESDAYS • KU HA'AHEO

An afternoon of music and hula led by kumu hula Blaine Kamalani Kia. Waikiki Beach Walk, Plaza Lawn. 4:30–6 p.m. waikikibeachwalk.com. FREE.

TUESDAYS KCC FARMERS MARKET

The Saturday Market is so popular they added another day. Head up to Kapiolani Community College to stock up on fresh, island produce, seafood, flowers and more, from several dozen vendors. 4 – 7 p.m. Free. 848-2074.

TUESDAYS & THURSDAYS FRESH FARMERS MARKET AT THE HYATT

Due to its overwhelming success, the Hyatt has added another day of their popular Farmers Market for visitors and locals to stock up on fresh local organic fruits, vegetables, jams, honeys, baked goods and more. Stop by twice throughout the ground floor of the Pualeilani Atrium Shops. 4 – 8 p.m. Waikiki.Hyatt.com.

TUESDAYS, THURSDAYS & SUNDAYS TOUR AND TEA AT THE HONOLULU ACADEMY OF ARTS

Tours are led by volunteer docents and designed for visitors, who would like to explore the galleries, learn more about art and culture, and socialize over a cup of tea. Docents lead discussions in the galleries and offer insight into many cultures and time periods. 2:30 – 4 p.m. in selected galleries. Free with admission. Reservations required. 532-8700.

**TUESDAY – SATURDAY
HAWAIIAN MISSION HOUSES GUIDED TOURS**
Visit the Printing Office and Frame House while learning about the 19th century history and culture preserved at this beautiful museum. Galleries also open to explore on your own. Hawaiian Mission Houses. Tues-Sat. 11 a.m. & 2:45 p.m.; Tues. – Fri. 1 p.m. \$6-\$10. 531-0481 or missionhouses.org.

**FIRST WEDNESDAY (APRIL 5)
HIP: HOSPITALITY INDUSTRY PAU HANA**
The Hawaii Lodging & Tourism Association hospitality industry pau hana at SKY Waikiki returns this month. hawaiilodging.org.

**THIRD WEDNESDAY (APRIL 19)
KONA NUI NIGHTS**
Kona Nui Nights honors and highlights Hawaiian language and music, as well as the art of hula on the third Wednesday of every month with food and

drinks for sale. Free. Ward Village Information Center Courtyard. 6-8 p.m. wardvillageshops.com.

SECOND THURSDAY (APRIL 13) COURTYARD CINEMA

Ward Village hosts its monthly film series event, Courtyard Cinema, on the 2nd Thursday of each month. The showing features free popcorn, refreshments, food vendors and entertainment. Courtyard Cinema is free and open to the public. Seating is limited. Reserve your tickets at wardvillagecourtyardcinema.com.

THURSDAYS • COURTYARD YOGA

Take a complimentary yoga class with CorePower Yoga at the Ward Village Information Center Courtyard. Open to the first 50 in attendance. All experience levels welcome. 5:30 – 6:30 p.m. For more information visit wardvillageshops.com/yoga.

**THIRD THURSDAY (APRIL 20)
DOWNTOWN GALLERY WALK & CRAFT FAIR**
The Arts at Marks Garage continues to build on downtown activities offering execs an excuse to hang out after work and giving everyone else a reason to head downtown. Free. 521-2903. artsatmarks.com.

FRIDAYS • CULTURAL CRAFT FAIR
The Hyatt has had so much success with its weekly Framers Market featuring fresh local produce that they are applying the same principle to local craft items. Each week the craft fair will showcase local vendors featuring arts&crafts, photography, jewelry, woodwork and more. 3–7 p.m. Waikiki.Hyatt.com

**FIRST FRIDAY (APRIL 7)
DOWNTOWN GALLERY WALK & CRAFT FAIR**
Art lovers should head to downtown Honolulu the first Friday of each month. This event has exploded into a downtown party with galleries and studios open for exhibitions, artist demonstrations, and special performances. 23 galleries and art-related retail shops, restaurants and museums participate. Downtown Honolulu/ Chinatown. 6 – 9 p.m. Free. 521-2903 or artsatmarks.com.

**FINAL FRIDAY (APRIL 28)
ART AFTER DARK**
Art after Dark returns with the hippest event of the month. This month explore Shahzia Sikander's Parallax at Parallel Universe. artafterdark.org.

**SATURDAYS
KCC FARMERS MARKET**
Fresh island produce, seafood, flowers and more are available from over two-dozen vendors at Kapiolani Community College. Free. 7:30-11 a.m. 848-2074.

**SATURDAYS
PEARLRIDGE FARMERS MARKET**
Over 40 vendors offering locally grown fruits and vegetables, plants and freshly made treats. A pop-up cafe offering seating and live music round out the day. Free. 8 a.m. - noon. PearlridgeOnline.com.

**SATURDAYS
KAKA'AKO FARMERS MARKET**
The Kaka'ako Farmer's Market hosts an abundance of treats from around our islands. Located between Ward and Kamakee Streets, Free. 8 a.m. - 12 p.m. 388-9696 or haleiwa farmersmarket.com.

**SECOND SATURDAY (APRIL 8)
DOWNTOWN GALLERY WALK & CRAFT FAIR**
First Friday has become such a success that events carry over to the second Saturday. HiSAM, 11 a.m. – 4 p.m. 586-9958. Other events around downtown Honolulu all afternoon including slam poetry and open mic events at The Arts at Marks from 3-5 p.m. Free. 521-2903 or artsatmarks.com.

DISCOUNT HAWAII CAR RENTAL SAVE UP TO 50%



GUARANTEED RESERVATIONS
* NO BOOKING FEES * NO
DEPOSIT * CANCEL ANYTIME
* NATIONAL RENTAL
COMPANIES

call us today @
1.800.292.1930

or check us out online:

DiscountHawaiiCarRental.com

WAIKIKI BAPTIST Church

Your Church in Waikiki

424 Kuamo'o St

(Near the Ambassador Hotel)

Sunday Worship Services

9:00 AM - Contemporary

10:45 AM - Traditional

(808)955-3525

WaikikiBaptist.com

Wildlife Guaranteed

See dolphins or turtles or come again free wildlife-specific cruises in Waikiki, West Oahu & Kona. Family-owned company with ocean activities for all ages.



WAIKIKI •
WAIANAЕ •
KONA
Sail • Snorkel •
Dolphins • Turtles
• Whales • Scuba •
Fireworks Dinner •
Private Charter •
Transportation

234-SAIL

(7245)

WE ANSWER 24 HOURS!

hawaiinautical.com

Hawaii Nautical



APRIL CALENDAR OF EVENTS

THIRD SATURDAY (APRIL 15) HONOLULU NIGHT MARKET

Honolulu Night Market returns to its normal day for its art, fashion and food truck block party. honolulunightmarket.com.

SATURDAYS & SUNDAYS ART ON THE ZOO FENCE

More than 35 local artists display their works on the Zoo fence on Monsarrat Avenue opposite the Kapiolani Park Bandstand. Works for sale include original paintings, prints and photographs. 9 a.m. – 4 p.m. Free. artonthezoo.com.

SECOND SUNDAY (APRIL 9) FREE ADMISSION TO IOLANI PALACE

On the second Sunday of each month, Iolani Palace opens its doors to kama'aina guests to visit the historic landmark for free. iolanipalace.org.

SUNDAY SHOWCASE (APRIL 9 & 23) NA MELE NO NA PUA

Waikiki Beach Walk presents the music of Mike Ka'awa on April 9th and Kamehameha Schools Children's Chorus on the 23rd at the Plaza Stage from 5 – 6 p.m. waikikibeachwalk.com.

THIRD SUNDAY (APRIL 16) BANK OF HAWAII FREE SUNDAY

The Honolulu Museum of Art opens its doors to the public free of charge on the third Sunday of every month thanks to Bank of Hawaii. Lots of activities for kids and grown-ups alike. 11 a.m. - 5 p.m. Free. 532-8700.

APRIL 1 SUNSET MELE ON THE ROOFTOP

The Sunset Mele Marketplace features food booths, arts & crafts booth and more starting at 5 p.m. Live entertainment featuring Kimo Alama Keaulana & Lei Hulu. Feel free to bring low-slung beach chairs, mats or blankets to watch the feature film "Moana", starting at 7 p.m. facebook.com/HawaiiConventionCenter. 5 – 9 p.m. 943-3025.

APRIL 1-2 HALEKULANI MASTERWORKS CONCERT

Guest violinist JinJoo Cho performs Mendelssohn's violin concerto. The orchestra will also perform Zemlinsky's The Little Mermaid and the World Premiere of Kumulipo Reflections, based on the Hawaiian Creation story and intended to inspire awareness about coral reef preservation. 4/1, 7:30 p.m. and 4/2, 4 p.m. Blaisdell Concert Hall. Tickets: \$34-\$92. hisymphony.org.

APRIL 1-9 • HIFF SPRING SHOWCASE

The Honolulu International Film Festival presents its 20th annual Spring Showcase, with 8 premiers from Sundance and the biggest hits from Asia. 32 films from 12 countries will be showcased in all. Dole Cannery Theatres. See the lineup at hiff.org.

APRIL 2 WAIKIKI ARTFEST

Check out the work of close to 100 local artists as they display their crafts for all to see and buy. Enjoy live music and food booths while shopping. Free. 9 a.m. – 4 p.m. Kapiolani Park. hotcrafts.net.

APRIL 3 – 5 JAKE SHIMABUKURO

Hawaii's favorite ukulele virtuoso, Jake Shimabukuro, performs two shows a night for three days at Blue Note Hawaii. 6:30 and 9 p.m. Tickets: \$25-\$45. Kamaaina get 15% off. bluenotehawaii.com.

APRIL 6 OAHU CHORAL SOCIETY

The O'ahu Choral Society and HSO present Verdi's Requiem with the BYU Hawaii Concert Choir and

Grammy nominated soprano, Angela Brown. Blaisdell Concert Hall. Tickets: \$30-\$65. Blaisdell Concert Hall. 7:30 p.m. hisymphony.org.

APRIL 7-8 VIDEO GAMES LIVE

The musicthatPOPs season finale brings your favorite video games such as Super Mario Brothers™ and Halo™ to life by the Hawaii Symphony Orchestra and phenomenal special effects, just in time to coincide with Kawaii Kon. Tickets: \$27-\$79. Blaisdell Concert Hall. 7:30 p.m. hisymphony.org.

APRIL 7 - 9 • KAWAII KON

A three-day convention that celebrates all things Japanese anime and manga culture. There will be a variety of events and activities including video games, table top games, costume contests, thousands of comics to read, an Artist Alley, a Manga Library, formal ball and nearly 20 special guests in for the event. Hawaii Convention Center. kawaiikon.com

APRIL 7 LAUGH NOW CRY LATER

JB Smoove, best known for his breakout role as Leon on Curb your Enthusiasm, began his career on Def Comedy Jam. Most recently he hosted the NBC reality Series last comic standing. Join him and special guest Donnell Rawlings for a hilarious evening of comedy at the Hawaii Theatre 7 p.m. Tickets: \$45-\$65. hawaii theatre.com.

APRIL 8

WILLIE K. & FRIENDS TWILIGHT CONCERT

Sea Life Park is hosting the Makapu'u Twilight Concert Series and they're kicking off the trio of concerts with some big names in local entertainment. Willie K. will be joined by Kupaoa, Hapa, and the ladies from Na Leo Pilimehana. Tickets start at \$39.50 and will go up closer to the show. Kids under 10 are free. Ticketholders can explore the park beginning at noon, music begins at 5 p.m. Food available for purchase, concert ends at 11 p.m. sealifepark.com

APRIL 8 • COLBIE CAILLAT

Her breakthrough hit "Bubbly" back in 2007 remains one of the best-selling digital tracks in history. Now a multi-platinum Grammy award winning artist, she brings her talents to the Hawaii Theatre. 8 p.m. Tickets: \$49.40-\$69.50. hawaii theatre.com.

APRIL 8 - 9 • HAWAIIAN SCOTTISH FESTIVAL & HIGHLAND GAMES

The annual festival offers two days of Celtic music, performers, highland dancers, swordplay and fencing demonstrations, a children's activity area and a clan and genealogy room. There will be plenty of Celtic-themed food (even haggis), wares and whisky for sale. McCoy Pavilion. \$1 admission. 10 a.m. – 9 p.m. on Saturday, until 6 p.m. on Sunday. hawaiianscottishassociation.org

APRIL 8 - 9 • ROSEANN BARR

Comedy superstar, award-winning actress, best-selling author, Roseann Barr was originally supposed to perform in November but had to reschedule due to an accident. Tickets (\$45-\$55) purchased for the original show will be honored. Only one show per evening. 8 p.m. Blue Note Hawaii. No kamaaina discount. bluenotehawaii.com

APRIL 9 • THE HAPALUA

Hawaii's half-marathon kicks off the 13.1 mile course at the Duke Kahanamoku Statue with runners westward toward downtown, where they turn at Smith Street, and then head back towards Waikiki ending at Kapiolani Park. Expect multiple lane closures along the course starting at 3 a.m. Race starts at 6 a.m. thehapalua.com.

APRIL 9 - 15

LPGA LOTTE CHAMPIONSHIP 2017

This will be the 6th year the best lady golfers in the world stop in the island. 144x players have registered to hit the links in search of the \$2 million purse. Admission \$10 daily, or get a week pass for \$25. Ko Olina Golf Club. lottechampionship.com.

APRIL 15 • OAHU FESTIVAL

Kalakaua will shut down between Seaside and Uluniu Avenue for a block party presenting food, retail booth and local handmade crafts. A portion of the proceeds will be donated to Easter Seals. 4 – 10 p.m. millwoodohanaproductions.com

APRIL 21-22

IOLANI SCHOOL FAMILY FAIR

Everyone is welcome at the Iolani Family Fair. Enjoy food, crafts, rides, games, plant sale, chef demos, crafts, petting zoo, live music, lion dances and more! 4/21, noon – 9 p.m.; 4/22, noon – 7:30 p.m.

APRIL 21 • K.FLAY

Check out this rising indie hip hop artist. Tickets: \$15. Prices go up day of show. The Republik. 8 p.m. bampproject.com.

APRIL 21 • FUNTASTIK 4

Pokwang, Pooh, Chokoleit and K Brosas, some of the best comedians in the Philippines have joined forces for this much anticipated US Tour. Enjoy their antics at the Hawaii Theatre. 7:30 p.m. Tickets: \$57-\$97. hawaii theatre.com.

APRIL 22 • MISSION HOUSE OPEN HOUSE

One of only two free days at the all year long. Enjoy free admission, family activities on the lawn, and free tours on the half hour from at noon – 3 p.m. Come explore the Hawaiian Mission Houses from noon – 4 p.m. missionhouses.org.

APRIL 26 • NEMR NASSAR

The Lebanese/American stand up comedian is credited with establishing and pioneering the stand-up comedy scene throughout the Middle East. Tickets \$24-\$38. Two shows nightly. 7 p.m. and 9 p.m. Blue Note Hawaii. No discounts. bluenotehawaii.com.

APRIL 26-27 • NORAH JONES

The 9-time Grammy winner comes to the Hawaii Theatre for two special shows as part of her world tour promoting her new album "Day Breaks". Tickets: \$49.40-\$79.50 but look to be mostly sold out except for a few accessible seats, so keep your eyes on alternative options. 8 p.m. hawaii theatre.com.

APRIL 27 • SUICIDE BOYS

The New Orleans rap duo will perform at The Republik. Tickets: \$35, prices go up the day of show. 7 p.m. bampproject.com

APRIL 28 • KALEO

This Icelandic band that has been rocketing to the top of the charts with their #1 hit song "Way Down We Go" comes to Hawaii. Tickets: \$29.50. Prices go up day of show. The Republik. 8 p.m. bampproject.com.

APRIL 29 • WAIKIKI SPAM JAM

It's time for one of the more unique and popular block parties held all year. The 14th annual Waikiki SPAM Jam will unfold on Kalakaua between 4 – 10 p.m. with plenty of food, entertainment and fun for the whole family. waikikispamjam.com.

APRIL 30 • I LOVE KAILUA FEST

It's the 25th anniversary of this street party. Enjoy dozens of food booths from Kailua-area restaurants, works from Windward artists will be on sale; live entertainment and the popular "I Love Kailua" logo booth will have merchandise bearing this year's logo. 11 a.m. – 4 p.m. lanikailuaoutdoorcircle.org.

Blue Note

HAWAII

WORLD'S FINEST
JAZZ CLUB & RESTAURANT

APRIL LINEUP

SHOWS AT
6:30 & 9PM
NIGHTLY



Jaka Shimabukuro
April 3 - 5



BLUE NOTE COMEDY SERIES:
Rosanne Barr
April 8 & 9 @ 8pm



**Ladysmith
Black Mambazo**
April 14 - 16



Miles Electric Band
April 20 - 22



Willie K
April 25



Kimie Minor
April 27 - 29

DONT FORGET TO CHECK OUT OUR
INDUSTRY NIGHTS!

EVERY TUESDAY

\$10 COVER

1/2 OFF APPS

DRINK SPECIALS

SHOW YOUR INDUSTRY CARD
AND ENJOY THE SHOW!

VIP reservations and discounts available
for groups of 12 or more.

Contact Shana Singh for more group information:
Shana@bluenotehawaii.com.

WWW.BLUENOTEHAWAII.COM | 808-777-4800
Located in the Durrigger Waikiki Beach Resort
VALIDATED PARKING AVAILABLE AT CHANA
WAIKIKI EAST HOTEL | \$6 FOR UP TO 4 HOURS



Barefoot Beach Café invited members of the hospitality industry to preview mini versions of their Beach BBQ (which take place every Friday and Saturday night from 5:30 to 8:30 p.m.) and a sample of the Luau they are considering bringing to the cafe. For now the luau is available as part of their catering buy out options, but after surveying the guests that evening, they are looking into bringing the Luau to the cafe weekly this summer. We'll let you know. Open daily from 7 a.m. - 8:30 p.m. with live music starting at 5:30 p.m. daily. 924-CAFE (2233) or barefootbeachcafe.com.





WARD VILLAGE.

FREE EVENTS AT WARD VILLAGE



WEEKLY—Sessions welcome all ages and skill levels taught by CorePower Yoga instructors



MONTHLY—Features independent films curated by the Hawaii International Film Festival and themed activities in an extraordinary outdoor theater setting.



MONTHLY—Brings the abundance of the country into the heart of the city with fresh locally grown fruits, vegetables, meats and treats.



MONTHLY—Celebrates Hawaiian culture and language through performances by beloved hula halau and Hawaiian musicians.

Visit WardVillage.com/events for full schedule.
#weareward



That's Entertainment

HOTELS

- HALE KOA HOTEL** 955-0555
 •**TuSat** - High and Right Comedy Show takes the stage at the Warriors Lounge at 8pm.
 •**MThFS** - Poolside music at the Barefoot Bar. 6-11pm
- HALEKULANI HOTEL** 923-2311
 •**Daily**-Hawaiian Music and hula at House Without A Key from 5:30-8pm.
 •**Daily**-Live Contemporary and light Jazz at Lewers Lounge from 8:30pm to midnite.
 •**Sun**- Sunday brunch at Orchids features Noly Paa on the piano from 9:30 - 2:30pm.
- HILTON HAWAIIAN VILLAGE** 949-4321
 •**Fri** - Fireworks at 7:45pm.
 •**Fri** - The Rockin' Hawaiian Rainbow Revue, a musical salute to King Kalakaua, at the Super Pool. 7 pm.
 •**FriSat** - Olomana at the Tapa Bar from 8-11pm.
 •**Daily** - Live entertainment at the Hau Tree Bar and the Tapa Bar from 8-11pm.
- THE KAHALA HOTEL & RESORT** 739-8888
 •**TuWThFSat**- David Swanson vocalizes on the piano at The Veranda from 7:30-10pm.Hawaiian on Sun/Mon.
- MOANA SURFRIDER** 922-3111
 •**Daily**-Hawaiian music & hula. The Banyan Court, 6-8 pm, and again from 8 -10 p.m. Weekends from 11:30- 2 p.m.
 •**MWFri**-Guided historical tours at 11am.
- NEW OTANI KAIMANA BEACH** 923-1555
 •**FSat**- Jazz guitarists in the Sunset Lanai Bar. 6-9pm.
- OUTRIGGER WAIKIKI ON THE BEACH** 923-0711
 •**Mon**- Kukui Nut Bracelet Making. 1pm.
 •**Th**- Ukulele Lessons. 1pm.
 •**Fri**- Aloha Fridays bring back old Hawai'i with music, hula, ukulele & lei making lessons. 9am-1pm.
- OUTRIGGER REEF ON THE BEACH** 923-3111
 •**Daily**- See guest artists at work in Kuloko Arts of Hawaii 9am-1pm and again from 6-9pm.
- SHERATON PRINCESS KAIULANI** 922-5811
 •**Daily**-Live Hawaiian music & halau at the lounge from 6-8:30pm, then poolside from 8:30-10:30pm.
 •**Th**-Princess Kaiulani historical tour at 9:30am.
- THE ROYAL HAWAIIAN** 923-7311
 •**TTH**- Free guided resort tour at 1pm.
- TURTLE BAY RESORT** 293-6300
 •**MTWThFSat**- Lei Making, Main Lobby at 10am.
 •**ThSun** - Fire Dancer, Hang Ten Pool Bar at Sunset
 •**TThFri** - Shell Hula Lessons, Lobby at 10am
 •**TThFri** - Ukulele Lessons, Lobby at 9am
 •**Fri**- Music & Hula. Lobby Lounge 6:30-8:30pm.

- WAIKIKI BEACH MARRIOTT RESORT** 922-6611
 •**Daily**-Hawaiian entertainment in The Moana Terrace Bar. 6:30-9:30pm.
 •**Fri**-Local crafters "Aloha Friday Fair" Lobby 9a-2pm

MUSEUMS

- HAWAII STATE ART MUSEUM** 586-0900
 •**TWThFSat** - Inaugural exhibition "Enriched by Diversity: The Art of Hawai'i." Free. Tuesday-Saturday, 10 a.m. to 4 p.m. Located in the Capital District.
- HAWAII THEATRE** 528-0506
 •**Tues**- A one-hour guided tour offers a unique insight in the history, art, architecture and restoration of the Hawai'i Theatre with trained docents & a mini-concert on the 1922 Robert Morton Theatre Organ. 11 a.m. Admission: \$10.
- HONOLULU MUSEUM OF ART** 532-8726
 •**MWF**- Japanese Language Tours. Private tours also available. 1pm. Regular admission.
- HONOLULU FIRE MUSEUM** 723-7167
 •**3rdSat**- Free one-hour guided tours through various exhibits with a firefighter recounting HFDs history the 3rd Saturday: 9am - 2pm. Reservations required. 620 South Street. honolulu.gov/hfd/communityrelations
- IOLANI PALACE** 522-0832
 •**Mon-Sat**-45 minutes docent-led or self-guided audio tours available in English or Japanese. Japanese-led tour is available only at 11:30 a.m. All tours include re-tour video and entrance into the Palace Galleries. Adults: \$14.75-\$21.75 / Keiki (5-12): \$6. 9am-5pm
 •**Sat**-Hawaiian Quilt Classes. Old Archives 9:30a-12p.
- LUCORAL MUSEUM** 922-5381
 •**TTh**- Learn how to plan your jewelry project and more in this beaded jewelry workshop \$10. 2-4 p.m.
- HAWAIIAN MISSION HOUSES** 447-3910
 •**Tue-Sat**-Learn about the dramatic story of cultural change in 19th-century Hawai'i. Docents lead tours through the oldest existing frame house in the Islands, Printing Office, and the coral block Chamberlain House. Reservations required. www.missionhouses.org
- PACIFIC AVIATION MUSEUM** 441-1000
 •**Daily**-Vintage aircraft in battlefield hangars at Pearl Harbor. Combat flight simulators. Aviator's Tour takes you through the new Restoration Hangar. Restaurant, Museum Store. Shuttle & Tickets at USS Arizona Memorial Visitor Center or at PacificAviationMuseum.org.
- THE SPALDING HOUSE** 526-1322
 •**Daily**-Docent-led tours given daily. 1:30pm. Garden tours or Japanese language tours are by appointment.

- NAVAL AIR MUSEUM BARBERS POINT** 682-3982
 •**Mon-Fri**- A unique museum experience about aviation history in Hawaii. All of the aircraft are open to climb in, on and around. Tours: 8 a.m. - 4:30 p.m. \$7 / \$5 children under 18. BLDG 1792, Midway Road, Kalaeloa Airport. Reservations required. Sat/Sun by appt only. www.nambp.org.

SHOPPING CENTERS

- ALA MOANA CENTERSTAGE** 955-9517
 •**Mon-Sat** - Ala Moana Hula Show. Centerstage 1-1:20pm
 •**MWF**- Hawaiian music *Mauka Wing*, Lvl 2 2:30-3:30pm
 •**Sun** - Keiki Hula Show. Centerstage 1-1:20pm
- KINGS VILLAGE** www.kings-village.com 237-6344
 •**MW** Famer's Market offering fresh produce, baked goods and local food items from 4-9pm.
 •**Daily** King's Guard Museum features a variety of collectibles and memorabilia. 10a-10:30p. FREE.
- ROYAL HAWAIIAN CENTER** 922-2299
 • **MWF**- Learn Lomilomi 11am-12pm, Bldg. B, 3rd floor
 • **MF**- Hawaiian Storytelling 12pm, *Helumoa Hale*
 • **MTWF**-Hula 10am (4pm on Wednesdays), *Royal Grove*
 • **ThSat**- Rock-a-Hula Pre-Show 7pm, *Royal Grove*
 • **WTh**- PCC Show 11am, *Royal Grove*
 • **TWTh**- Lauhala Weaving 1pm, *Bldg A, 1st floor*
 • **TThF**- Ukelele 12pm, *Helumoa Hale*
 • **TWF**- Live Hawaiian music 6-7pm, *Royal Grove*
 • **ThSat**- Rock-a-Hula Pre-Show 7pm, *Royal Grove*
 • **Sat**- Hula Kahiko 6-6:30pm, *Royal Grove*

- WAIKIKI BEACH WALK** www.waikikibeachwalk.com
 •**Tuesdays** - Ku Ha'aheo featuring Hawaiian song and dance on the Plaza stage. 4:30-6pm
 •**Wednesdays** - Yoga Classes 4-4:45pm. Free.Plaza Stage

ATTRACTIONS

- KALAKAUA AVENUE** 527-5666
 •**Fri** - Strolling Hula from 8-10:00pm.
- KAPI'OLANI BANDSTAND** 527-5666
 •**Fri**-Hawai'i's finest musicians perform. 5:30-6:30pm
 •**Sun**-Royal Hawaiian Band performs 2-3:15pm.
- KUHIO BEACH HULA SHOW** 843-8002
 •**TThSat**- City & County presents a free hula show at sunset. 6:30 - 7:30pm at the hula mound.
- TAMARIND PARK - DOWNTOWN** 527-5666
 •**Fri**- Mayor's Aloha Friday Music from 12-1pm features live music from Hawaiian to Jazz to Pop.
- WAIKIKI TOWN CENTER** 922-2724
 •**Mon-Sat**-The songs and dances of Hawai'i, New Zealand, & Tahiti. Free shows begin at 7pm.

EVENTS SUBJECT TO CHANGE PLEASE CALL TO CONFIRM PRIOR TO ATTENDING

PAPARAZZI

Hawaii Food & Wine Festival raises \$400k



HFWF presented \$80,000 to the Culinary Institute of the Pacific. Robert Harrison, FHB Chairman/CEO; Denise Yamaguchi, HFWF CEO; Kelvin Ro, CIP; John Morton, UH VP Community Colleges; Conrad Nanaka, CIP Director; Rick Fried, HTA Chair; Sean Dee, HTA Board Member.

Evening Extraordinaire



Sam Choy and football player Junior Ah You's wife Almira opened Sam Choy & Tita's Seafood and Poke Food Truck at the Polynesian Cultural Center's Hukilau Marketplace last month. Shown here is Lauren Holly, Sam Choy and Brittany Evans

Chef Brian Malarkey heading to town



Known for his TV appearances on *Top Chef*, the Food Network's and the *Today Show*, Brian Malarkey was in town to preview his new restaurant *Herringbone* set to open next month and I was lucky enough to meet him and Geno Bernabe at the dinner.

conciierge card

April 30, 2017

• **Bill's Sydney Waikiki** - 20% discount off food and beverage (not applicable on happy hour or other offers). Must show hotel ID to receive discount. 280 Beach Walk. 922-1500

• **Dole Plantation** - 1 FREE Adult Admission To The Maze With Purchase of 1 Adult Admission. 621-8408

• **Giovanni Pastrami** - 15% Off Full Bar, Dine-in or Take-Out at anytime with ID. 227 Lewers St. 923-2100.

• **Hard Rock Café** - 15% off food, beverage (non-alcoholic), or merchandise. Hotel ID required. 280 Beachwalk Ave. 955-7383.

• **Hawai'i Prince Golf Club** - \$5 Off Standard Kamaaina Green Fees. Tee Times: 944-4567

• **Hilo Hattie** - 25% on Hilo Hattie labeled garments, 15% off other fashions/gifts and 10% off Hilo Hattie labeled foods. Not valid on sale item. Ala Moana Center. Ph 535-6500.

• **Hy's Steakhouse** - 25% VIP Discount Off Food And Beverage (up to 2 persons) 2440 Kuhio Ave. 922-5555

• **Hyatt Regency Waikiki** - 15% discount with the presentation of a concierge business card at SHOR, Japengo and SWIM. 2424 Kalakaua Ave. 923-1234.

• **Iolani Palace** - Free Admission. Regular rate \$21.75. 364 S. King Street, Reservations & Hotel ID required. 522-0832.

• **IHOP** - Receive 20% on entire bill. Must show valid hotel ID. Not valid with any other offer or discount. Valid only at Aqua Palms, 1850 Ala Moana Blvd., 949-4467 and OHANA Waikiki Malia by Outrigger®, 2211 Kuhio Ave., 921-2400.

• **Il Lupino** - 15% discount off food and beverage (not applicable on liquor or specials). Must show hotel ID or business card to receive discount. Royal Hawaiian Center. 922-3400

• **Kaiwa** - 20% off food & beverage between 5 & 7 p.m. 924-1555

• **Hawaiian Mission Houses** - Free tour with hotel ID. 553 S. King Street. 447-3910

• **Noi Thai** - 20% discount off food and beverage (not applicable on liquor, happy hour or specials). Must show hotel ID to receive discount. Royal Hawaiian Center, Bldg. C. Level 3. 664-4039

• **NWL Nails Wax & Lashes** - 20% discount off all services. Must show hotel ID and mention ad in magazine to receive discount. Inside the lobby of the Waikiki Grand Hotel. 922-NAIL

• **Pacific International Skydiving Center** - 50% Discount on Jump, 68-760 Farrington Hwy., 637-7472.

• **P.F. Chang's Waikiki** - Receive 20% on all appetizers, entrees, desserts and beverages 11 am - 5 pm daily (not valid for Pau Hana menu) Royal Hawaiian Center. Ph: 628-6760, 637-7472

• **Romano's Macaroni Grill** - 20% Off Food and Beverage for up to 2 guests. (Not Valid for Happy Hour Menu). Ala Moana Center, 1450 Ala Moana Blvd. 356-8300

• **Ruth's Chris Steak House** - 20% Off Food and Beverage for up to 2 guests. (Not Valid for Happy Hour & Prime Time menus). Restaurant Row, 599-3860. Waikiki Beach Walk, 440-7910.

• **Honolulu Museum of Art Spalding House.** - FREE Admission For you and one guest with hotel ID. 526-1322

• **The Original Glider Rides** - Come experience the joy of soaring for yourself. Concierge / GSA may receive a complimentary scenic ride. Request the "GSA flight special" when booking your reservation. Hotel ID required. Dillingham Airfield. 637-0207

• **Tiki's Grill & Bar** - FREE order of ANY appetizer with any purchase! One per table. OahuconPOKE. ASTON Waikiki Beach. 923-8454

• **Willoughby's Restaurant** - 15% off all food items. Ohana Honolulu Airport Hotel. 3401 N. Nimitz Hwy. 836-0661.

HELP us update this card. If you know of an offer not being honored let us know. As management changes, sometimes offers can get lost.

You will be required to show Hotel ID or business card to claim offer. Do not cut this card out of the book. One special per person per business. Offers valid on regular-priced merchandise only. Discounts are available to Guest Service Professionals ONLY. Not valid with other promotions or special offers. A minimum 18% gratuity on original order required for all special food offers.

Conciierge of the Month



NAME: **Vanessa Greene**

HOTEL: **Halekulani**

TITLE: **Conciierge**

Q. How long have you been with the Halekulani?
A. I have been a concierge here for 3.5 years.

Q. How big is your team there?
A. We have ten fabulous concierge on staff.

Q. How did you get your start in the industry?
A. Susan Koki recruited me to come back to Halekulani while I was working as a waitress at a popular Waikiki restaurant.

Q. What is been your biggest challenge at the desk?
A. Sharing the real Hawaii with our guests. I want them to leave the island having experienced our way of life, our food and the amazing nature of the islands, not the shopping, traffic and high rises.

Q. What do you like most about this industry?
A. The comradery with my fellow concierge both island and world-wide. Meeting people with a similar personality type to mine and wanting to share their love for their area with guests is very unique and inspiring to me.

Q. What do you do for your guests most often?
A. Create their perfect Hawaii. Everyone has their own mental image of Hawaii before they get here and I am here to find out what that dream place is and how to deliver it.

Q. What is the most unusual request you've handled?
A. Most recently, setting up a gift basket and framed photos of the guest's English bulldog throughout their room because they had been traveling on a babymoon and missed their first baby, the dog, at home.

Q. Can you think of one guest that really sticks out?
A. I have a VIP guest who comes quite often who has a larger than life personality including a love for back packs, a serious sweet tooth, and a zany family that lives locally which he only recently introduced to me because they embarrass him. Truth be told, he doesn't even really use our concierge services that often he just likes to share stories and keep in contact with our team and what is happening locally.

Q. What one question do you hear again and again?
A. Is this luau authentic?!

Q. Your guest has one day here, what should they do?
A. Explore but stay close to Honolulu, don't waste your time in traffic. Enjoy Diamond Head in the AM hours, see the Palace, enjoy a quick lunch in Chinatown then come back to relax at the pool or beach, get a tropical cocktail and watch the sunset.

Q. Describe your perfect day.
A. Wake up with coffee, watch Food Network to get inspired for future dishes to cook, fix something/ make something/ plant something then walk with my dogs before having cocktails and a great dinner with my friends and family.

Q. Have you received your keys yet? If not, when?
A. No I am too young! Just kidding but I do need a few more years at the desk before I am eligible.

Q. Where are you from originally?
A. I am from Mokuleia on the North Shore.

Q. What do you like to do most when not working?
A. Cook or bake.

EXPLORE OUR OAHU



Atlantis
SUBMARINES
WAIKIKI

The Atlantis underwater adventure is a great activity for the entire family. Create memories for a lifetime with Atlantis!

atlantisadventures.com

For info & reservations call (808) 973-9811

or fax to (808) 973-2499

   | #atlantishawaii

Photo: Kimberly Jaferies Photography

The Oahu Concierge is printed monthly and direct mailed FREE to all Oahu Concierge, Hospitality & Activity Professionals.

Subscriptions available to non-industry at \$25 per year.

C O N T A C T

Davis Media

Ph: 596-4422

www.oahuconciierge.com

Twitter & Instagram: @OahuConciierge

Facebook: www.facebook.com/OahuConciierge

ADDRESS & NAME CHANGES / ADDITIONS

We do not take changes via telephone. All changes to mailing list must be submitted in writing by the 16th of the month to make the next issue, email is preferred.

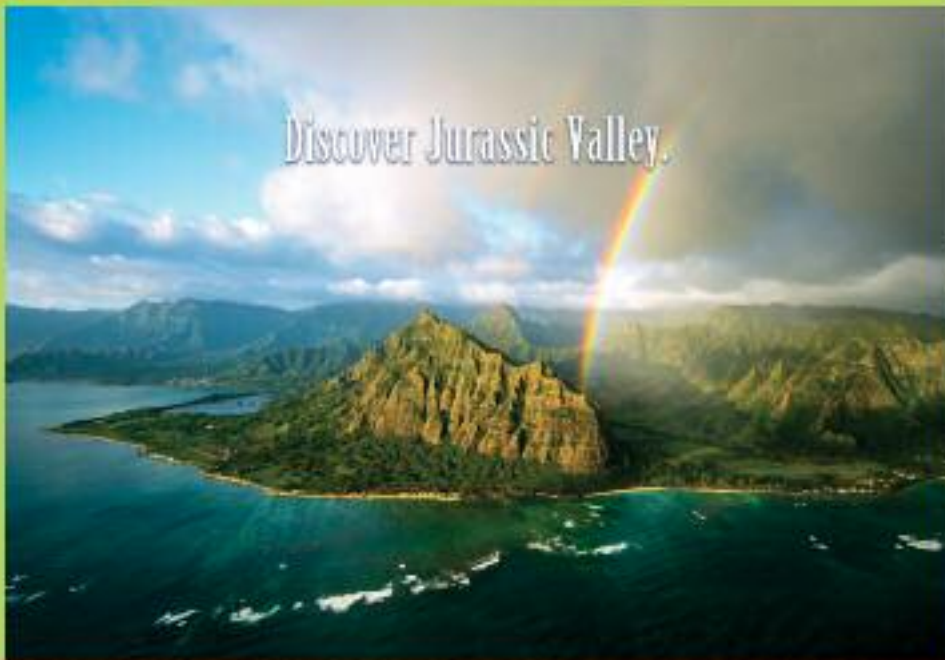
S T A F F

PUBLISHER & EDITOR **Pam Davis**
publisher@oahuconciierge.com

CONTRIBUTING EDITOR
Lance Rae

DESIGN
Coreiya Design

The Oahu Concierge
4348 Waialae Avenue, #185
Honolulu, Hawaii 96816



Oahu's BEST Eco Adventures starting at \$45.95

Call 808-202-2245 or visit kualoa.com
Open daily 8:30am-5:30pm

KUALOA
WHERE LEGENDS ARE MADE

