

Concierge

KEEPING THE HOSPITALITY INDUSTRY INFORMED SINCE 1998

Honolulu Festival

IS IT SOUP YET?



Taiko drummers perform at the 2016 Honolulu Festival. Photo courtesy of the Honolulu Festival.



Over 3,000 bowls will be available for the choosing at this year's event thanks to hundreds of potters who have dedicated their time to making bowls for the event. All pictures courtesy of Empty Bowl Hawaii

This isn't instant soup or packaged saimin or even Campbell's soup; it is gourmet soup all the way. You might call it calories for a cause. You will definitely call it delicious. Hawaii Potters' Guild and potters from just about every studio in the community that has a firing kiln, are working in high gear. For many months these ceramic artist-potters have been turning, shaping, glazing, firing, stacking and packing hand-crafted ceramic bowls in anticipation of volunteers ladling out gallons and gallons of gourmet soup, prepared by Hawaii's greatest chefs. It's really the most delicious party you may have attended in the past two years – because it only happens once every two years. The place is Dole Cannery Ballroom – lot of space, good parking and easy access.

The Empty Bowl Project began in Michigan in 1990 and has since gained momentum as a fundraiser in many cities focused on fighting hunger. Honolulu's event, started in 1999, plays a big part, providing kokua for the members of the community that can't count on dinner.

In Hawaii the first Empty Bowl event happened in Chinatown. Pauahi Street was closed and temporary constructed display shelves held hundreds of bowls. Tables with warmers and huge soup pots gave off the fragrance of curry, carrot,

Continues on page 6.

The Honolulu Festival is returning for the 23rd year to celebrate the culture of Asia Pacific March 10th- 12th. The Festival serves to share the different cultures of the Pacific region with the people of Hawaii and promote the understanding, economic cooperation and ethnic harmony between us. The three-day celebration showcases the many different cultures of our neighbors through music, dance, crafts, arts, exhibits, and special presentations before concluding with a parade through Waikiki and one of the best fireworks shows all year. (2nd only to that of Royal Cosmetics annual convention each June)

This annual cultural celebration has grown to become one of the islands premier cultural events bringing thousands to Oahu offering a variety of entertainment that is open to the public. All events except for the opening night Gala are free and will be held at the Hawaii Convention Center, Waikiki Beach Walk and Ala Moana Center.

This years' theme is "Cultural Harmony, Journey to Peace". More than 150 groups are coming to participate bringing around 5,000 people to the island. The Festival kicks off Friday night, March 10th with the Friendship Gala. This is the only event that charges an entry fee all weekend. Guest can wander through the ballroom at the Hawaii Convention Center noshing on small plates from a variety of restaurants while enjoying a multitude of entertainment. Tickets are \$90 per person (\$70 under age 21; free for age 6 and under).

The free cultural performances begin on Saturday from 10 a.m. – 6 p.m. and again on Sunday from 10 a.m. – 3 p.m. at the three locations notated above. In addition to the cultural

performances, there will also be a craft fair featuring over 100 vendors from around the world, including Hawaii and Japan. As in years past, the fair will also include a Japanese-style Ennichi /Carnival Corner with plenty of activities for keiki and adults, traditional games, food, and more. There will also be several Bon Dances held both days.

The Honolulu Festival also added a Film Festival this year offering a eight internationally acclaimed foreign films. Movie screenings are also free to the public and will be shown on the 3rd floor of the Convention Center in room 311. The 2015 movie "Persona Non Grata," that features the story of Sugihara Chiune – a Japanese diplomat during World War II who helped save over 6,000 Jewish refugees from the Nazis – will be shown both Saturday and Sunday in room 310 at noon. Both showings begin with a presentation from Akira Kitade, author of "Visas of Life and the Epic Journey: How the Sugihara Survivors Reached Japan."

The Aloha Dance Convention and kickoff for the Honolulu Rainbow EKIDEN will be held on Saturday starting from 4:30-9:00 p.m. at the Convention Center. There will be 30 teams from all sorts of genres competing and the 1st and 2nd place winners will be able to perform during the Grand Parade.

Sunday brings the 5th annual EKIDEN, a 5K relay race around Diamond Head and the coastline. For those that aren't that into running and want to spend more time enjoying the festivities they've introduced a new Fun Run &

Continues on page 2.

TABLE OF CONTENTS

Yada Yada Yada	2
Newsflash	3
Arts with Aloha	4
Hawaii European Film Festival	8
Chef's Corner: Yauachta's Ho Chee Boon	9
E Pili Kakou	10-13
Calendar	14-15, 17
Take a Walk on the Wild Side	16
That's Entertainment	18
Concierge of the Month: Crystal Nichols	19

W WOLFGANG'S STEAKHOUSE
 LUNCH • ALL-DAY HAPPY HOUR
 DINNER 'TIL MIDNIGHT • WKND BRUNCH
 Royal Hawaiian Center • wolfgangsteakhouse.net
 808.922.3600



Publisher's Letter



Service begins with a smile

You know, whether you're sitting at a concierge desk, the front desk, answering the phone at PBX serving up drinks, waiting tables or putting out a magazine, the fact of it is – we're all in the service industry – and let's be honest, service is everything!

I made the mistake of going out for Valentine's Day dinner last month. It's something I've avoided for years, because menus are always overpriced and service is usually marginal at best, but I chose a restaurant I frequent regularly and I can always depend on, so I felt safe. I was wrong. Proof that even the mighty can fall when the going gets rough, and boy was it rough. From attitude from the overworked hostess with an attitude to ridiculously slow service once seated, and the aforementioned overpriced menu, I can only be mad at myself for failing to yield to my own advice. A smile when I checked in, or from the server would have helped. An apology and something less than a 25-minute wait when the wrong drink was delivered would have helped as well, but these poor guys were fried. I get it. It's the craziest day of the year for people in the restaurant industry. I tried to excuse it because I know, but in the end, it was all just too much and we got our dessert to go because we had just sat there waiting for so long. Sure enough, it cost a fortune, and wasn't nearly as good as it normally is. Lesson learned, but I have a hard time wrapping my head around the fact that the normally very well trained servers had lost all of their skills by 8 p.m. at night. I've said it before, but a smile makes everything better.

I went to a much more casual restaurant recently that screwed just about everything up. From forgetting items we had ordered, to forgetting to take out the onions after I mentioned I had a serious allergy to nearly spilling a drink all over me, they blew it on every level. But I have to say the waiter was so nice. Apologized so many times it was almost awkward, kept smiling and cracked a few jokes at his expense, I actually walked out of a complete disaster of a meal with a smile on my face. Things happen, and chances are they're going to go wrong more times than they go right, but it's how you handle it when it does go wrong that makes all the difference in the world. It would serve us all well to remember that. I'm no exception. I know I can do better. When I'm facing a super tight multi-book deadline, I can get completely stressed out, and I too should remember to take a deep breath before I pick up the phone or reply to an email. People can hear emotion in your voice. What do you want them to hear... stress? Or a smile?

In an industry where interaction with our visitors, who are often stressed to a breaking point by the time they appear in front of you is job number one, it is important to remember that a friendly tone of voice and easy smile can help change their attitude as well. Your mood and attitude will wear off on them. Take a deep breath and remember... service always begins with a smile.



Yada Yada



Loan Montgomery-Freitas

Congratulations to **Loan Montgomery-Freitas** for being promoted to general manager of the **Wyndham Vacation Resorts Royal Garden at Waikiki**. Loan has been the assistant resort manager at the Outrigger-managed property since 2012. Prior to that she was the front office manager at the Holiday Inn Resort® Waikiki Beachcomber and the OHANA Waikiki West and guest services manager at the OHANA Waikiki East Hotel. • **Desert Island Restaurants** has announced **Heather Weis** as the Senior Director of Operations for **Ruth's Chris Steak House and Romano's Macaroni Grill** in Hawaii. A 1989 graduate of Punahou School, Weis started working at Ruth Chris Steak House in San Diego many years ago as a hostess, which kick started her long career in the restaurant industry both in front of the house, as a corporate trainer, and in upper management, including helping to open both the Wailea and Lahaina Ruth's Chris locations. • Congratulations also go out to



Heather Weis

Veronica Paige at **The MODERN Honolulu**, who was just promoted to the Chef Concierge position vacated by Ryan Tucker late last year. She is excited to work closer with all of the vendors she works with as well as facing the challenges the new position brings. • The **Hawaii Convention Center** has announce they have hired **Ryan Golpeo** as its director of operations. Golpeo brings more than 20 years of experience in the hospitality industry and a passion for food and beverage. Also at the Convention Center, a series of new additions and promotions to the Sales team was just announced. **Lois Asato** was recently promoted from Sales Manager – Hawaii to Director of Accounts – Local. In addition, HCC has brought on three new Regional Director of Accounts. **Meghan Feldstein** moved here from Chicago to take over the Midwest region; **Christine Davidson** brings 20 years of experience with her from San Jose to take over corporate and sports marketing accounts while 24 - year veteran **Dawn Eagleton** is responsible for selling Hawaii as a meetings destination and developing new business leads for meetings and conferences on the East Coast.



Veronica Paige

Honolulu Festival

Continued from page 1.

Walk that takes participants through one complete loop of Kapiolani Park as well as a Kids Challenge. All runners, both individual and teams must register online by March 5th at flregister.com/237.

Runners and spectators alike are encouraged too stick around Kapiolani Park for WaikiKitchen, where several food trucks and vendors will be open from 10 a.m. – 2 p.m.

The weekend's festivities will wrap up with the Grand Parade on Sunday from 4:30 to 8 p.m. through Waikiki. An impressive procession of music, drums, floats, decorative Japanese floats called mikoshi, and performers will make their way along Kalakaua Avenue from Saratoga Avenue to Kapiolani Park. Remind your guests that traffic will be restricted during the parade and don't forget their cameras.

Finally, the Honolulu Festival draws to a close with a spectacular firework show off Waikiki Beach. As many of you are already aware, the city of Nagaoka, Japan is famous for its amazing



The fireworks display above Waikiki will take place Sunday night, March 12th at 8:30 p.m. Photo courtesy of the Honolulu Festival.

fireworks displays. The Nagaoka Fireworks Festival is one of the largest fireworks extravaganzas in Japan, and we are fortunate that they are again bringing their pyrotechnics for all of us to enjoy. The skies above Waikiki will light up beginning at 8:30 p.m. and you can expect one heck of a show for all to enjoy. For more information and a detailed schedule of events, visit their website at honolulu festival.com. ~ Pam

Great Chefs® Fight Hunger seeks volunteers for March 25th event

The Hawaii Food Bank's signature event, Great Chefs Fight Hunger takes place this month on March 25th from 5 - 8 p.m. Around two dozen of Hawaii's top chefs will be on hand serving delectable bites for guests to nosh on and they are seeking volunteers to help out with the event.

Volunteers are needed for everything from checking people in to helping to set up, to serving

taking photographs. If you're interested in helping out, which also means you get to be at the \$200/ticket event for free, please reach out to Beverly Santos, Special Events Manager at the Hawaii Foodbank via phone at 836-3600, x244 or via email at events@hawaii foodbank.org. Any further questions, you may also reach out to me directly at publisher@oahu concierge.com. ~ Pam

EXTRA EXTRA EXTRA *Newsflash*

HONOLULU BIENNIAL

The Honolulu Biennial Foundation is pleased to announce its 2017 show. Entitled, Middle of Now | Here, this new, multi-site, contemporary visual arts festival runs from March 8 – May 8 throughout various sites in Honolulu. Nearly 3 dozen artists will have their works on display throughout town at Ward Village, Hawaii Prince Hotel, Honolulu Hale, Foster Botanical Garden, The Arts at Marks Garage, The Honolulu Museum of Art, Bishop Museum and Shangri La as part of the event. Complete details available at honolulu.biennial.org.

BUTTERFLY CONSERVATORY

Pearlridge Center opens their annual Butterfly Conservatory at the Pearlridge Uptown Center Court on March 11th. Guests will encounter butterflies fluttering freely throughout a staff-guided tour. All butterflies are sourced from farms on Oahu and Maui. The Conservatory will be open on Monday - Saturday from 10 a.m. to 8 p.m. and on Sunday from 10 a.m. to 6 p.m. Admission is \$4.50; children 2 years old and under are free with adult purchase. For more information, call 203-2358 or visit pearlridgeonline.com.

DOLE'S FAMILY FUN DAY

Dole Plantation hosts its Annual Family Fun Day on Saturday, March 11. The free event features entertainment, food booths, keiki games, buy-one-get-one-free admission to the World's Largest Maze and reduced admission to the Pineapple Express Train Tour. Festivities run from 10 a.m. to 2 p.m., including a special performance from Frank De Lima at 1 p.m. DolePlantation.com.

THE FIRST LADY CELEBRATES

No, not Melania. We're talking the real first lady... of Waikiki that is. The Moana Surfriider, A Westin Resort & Spa celebrates its 116th birthday on March 11th. Festivities will include a live musical performance paired with a special dinner or shareable pupu option for those that wish to dine under the Banyan while enjoying the unmistakable sounds of Robert Cazimero. moana-surfriider.com

PORTABLE SPORTS COURTS

The Hawaii Convention Center has purchased fully portable sports court in order to host sporting events in the Exhibition Hall. The \$1.1 million courts can be configured to simultaneously stage up to 28 regulation volleyball matches, 18 high school basketball games, and more. The courts allow them to go after the lucrative sports market.

ALA MOANA ADDS LIVE MUSIC

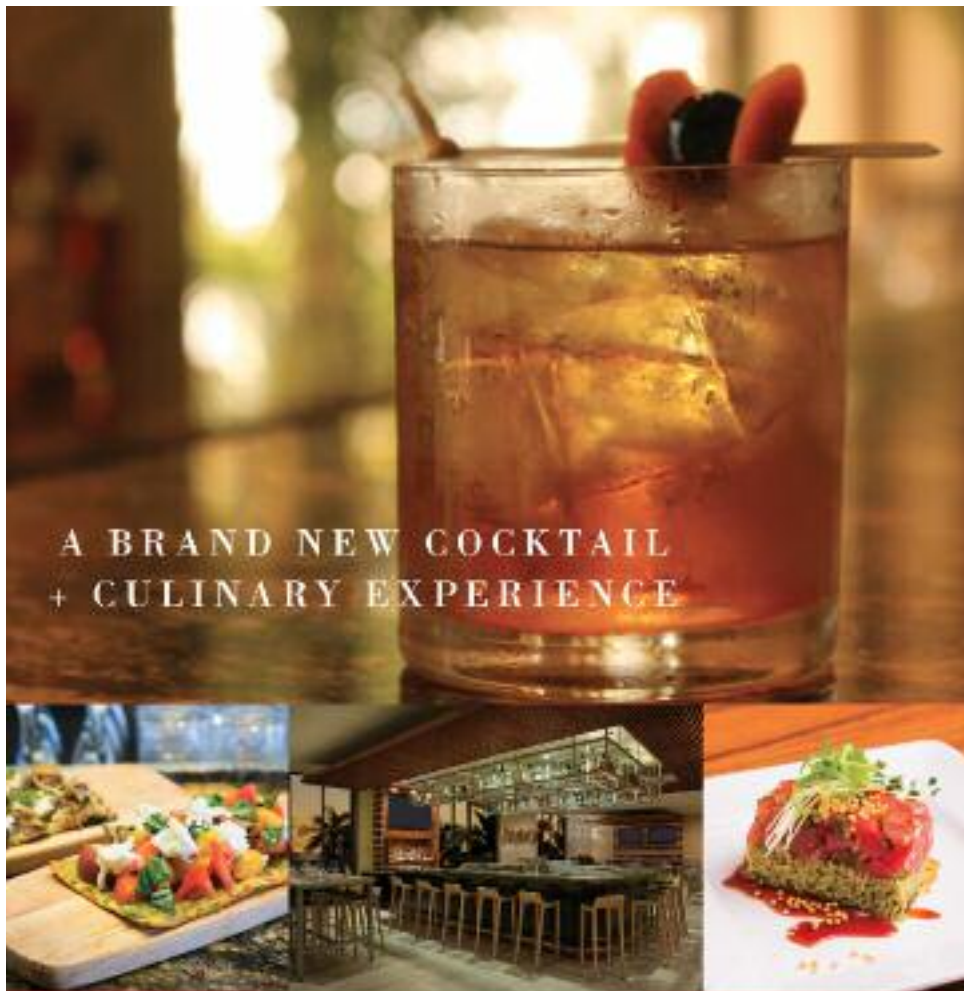
Ala Moana Center has introduced live Hawaiian music on Mall Level 2 in the Center's Mauka Wing (in front of GUESS) every Monday, Wednesday and Friday from 2:30 – 3:30 p.m. leading up to the seventh annual Mele Mei celebration that begins next month. alamoanacenter.com.

ALII TOWER REBRANDED

Hilton Hawaiian Village's Ali'i Tower has been rebranded into its own stand-alone property within a property. Now known as The Ali'i, an upscale, oceanfront boutique hotel anchored within the Hilton, the Village's private oasis has been rebranded and refreshed with upgraded amenities and exclusive experiences and new uniforms different from those of the rest of the property for the staff. The hotel within a hotel offers its guests a pampered, sheltered, privileged oasis in the middle of the bustling 22-acre property.

RITZY SPA OPENS

The Ritz-Carlton Residences, Waikiki Beach has just opened their on property spa. Open daily from 7:30 a.m. to 7:00 p.m., the Ritz-Carlton Spa services were inspired by traditional Hawaiian healing methods and our islands natural surroundings. The menu of treatments and signature treatments was developed by Hawaiian Rainforest Naturals co-Founder and cultural practitioner Melia Goodenow from the Big Island. Call 729-9783 for more information, or visit their website at RitzCarlton.com/Waikiki.



KUHIO BEACH GRILL RESTAURANT & BAR

Stylish locally sourced American cuisine with shared dishes served table side. Home of Waikiki's best selection of whiskey & bourbon in a stunning setting overlooking Waikiki Beach.

Open for Dinner 5 - 10pm

Waikiki Beach Marriott Resort & Spa - Kealohilani Tower 2F

For reservations book on OPEN TABLE or call 808 921 5171

Free validated parking #KBGWaikiki   

Blue Note HAWAII

WORLD'S FINEST
JAZZ CLUB & RESTAURANT

MARCH LINEUP

SHOWS AT
6:30 & 9PM
NIGHTLY



Ron Artis II
March 1



**BLUE NOTE COMEDY SERIES:
Andy Dumatai**
March 5



Sharon Dourbennais
March 6



Earl Klugh
March 12



Hiromi
Trio Project Ft. Simon Phillips
March 14 - 18



**Tak Matsumoto &
Daniel Ho**
March 19



Willie K
March 21



**Gipsy Jazz & Tribute to
Django Reinhardt**
WITH THE HOLYVILLE PLAYERS
March 22



Steve Kimick
March 23 & 24



Blood, Sweat & Tears
March 30 - April 2

WP reservations and discounts available for groups of 12 or more.

Send Corey Dunnes for more group information:
corey@bluenotehawaii.com

www.bluenotehawaii.com | 808-777-4890
Located in the Outrigger Waikiki Beach Resort

VALIDATED PARKING AVAILABLE AT OHANA
WAIKIKI EAST HOTEL 1\$6 FOR UP TO 4 HOURS

arts with aloha



Honolulu's arts and cultural scene this March is all about patterns. Visual configurations inspired by nature that make you think, pentatonic arrangements found in rock music that make you want to sing and orchestral compositions that make you want to cry. In other words, this month is about artistry (when is it not?) in the visual and performing arts.



Design motifs and patterns showcased at Bishop Museum's latest exhibit.

What is Hawaiian artistry? That question is answered in **BISHOP MUSEUM'S** newest and original exhibit called *Hulia 'Ano: Inspired Patterns* which opens March 18th and runs through mid-October in the J. M. Long Gallery. The exhibit explores the various visual patterns or design motifs that are trademarks of Hawaiian art. This includes configurations stamped onto cloth, drawn onto gourds and woven into mats. The exhibit also looks into the indigenous patterns inked onto skin. The evolution of each design motif or pattern is separately showcased with displays of cultural objects as well as natural science specimens that celebrate that particular form. A single Hawaiian word is used for each grouping as a visual or conceptual description of that pattern. Some of the design motifs include the words Hoaka (crescent), Halu'a (stripe), Papamu (checker), Nihoniho (triangle), Kike'eke'e (zigzag), and Pupu (circle/shell).

After viewing each of the design displays, visitors will have the opportunity to create their own Hawaiian design motifs inspired from the exhibit. Visitors can select a variety of patterns on a digital screen to virtually decorate a gourd. Another interactive digital screen will allow guests to create a full-scale Hawaiian quilt projected onto a wall by arranging crown, pineapple and flower patterns.

Starting March 21st from 1-3 p.m. on Tuesdays, Wednesdays and Thursdays the museum will add another interactive display where visitors can also try their hand at traditional Hawaiian printing using stamps and inks. This activity will be located in the Hawaiian Hall Atrium.

Rounding out the exhibit is a collection of art created by five contemporary artists of various Hawaiian cultural backgrounds each artist inspired by the Museum's various collections of cultural and natural objects. The artists include: Verna Takashima (Kapa Maker); Taupouri Tangaro (Cordage Expert); Lufi Luteru (Lau Hala Weaver); Kawika Lum (Featherwork Master); and Matt Ortiz (Mixed-Media Artist).

This exhibit is included in the Museum's general admission price and don't forget to remind your guests that parking in the museum lot is \$5 per car. For more information visit BishopMuseum.org.

What is Rock Music? The answer to this question is personified in **MANOA VALLEY THEATRE'S** production of the musical *Rock of Ages* which runs from March 6th to March 26th. Rock is all about amplified instruments, the electric guitar and electric bass in addition to a strong bass line and driving rhythms. This is exactly what you get song after song in this musical by Chris D'Arienzo that features melodies from Styx, Journey, Bon Jovi, Pat Benatar, Steve Perry, Whitesnake and other 80s bands to tell the story of good-guy aspiring rocker named Drew, an innocent Mid-West girl named Sherrie, a stoner named Dennis Dupres, who owns the Bourbon Room, one of the Sunset Strips' last legendary venues, where both Drew & Sherrie work, in addition to a crazy group of characters that includes a charismatic metal-rock star named Stacey Jaxx. The E! True Hollywood love story of Drew and Sherrie is played out over the drama of Dennis being forced to sell the Bourbon Room to German developers who want to turn it into a strip mall. The plot is not all that important and it's just there to get the audience from cool song to even cooler song. The audience is encouraged to sing-a-long and rock-out-with-their-eggplants-out. If the story line seems familiar to you, Tom Cruise starred in the movie version in 2012 as the Stacey Jaxx character. Your guests can order online at ManoaValleyTheatre.com or call 988-6131. Show times are Thursdays at 7:30 p.m., Fridays & Saturdays at 8 p.m. and Sundays at 4 p.m.

What makes you cry? The songs in Andrew Lloyd Webber's and Tim Rice's musical *Evita* at **DIAMOND HEAD THEATRE** from March 24th to April 16th will definitely make you cry for joy and sorrow for the Argentine political leader Eva Peron whose life is the basis for this show. However, her signature song "Don't Cry For Me Argentina" will tell you otherwise. Did you know the show began as only a rock opera concept album before it was turned into a full musical production? It first opened in London then moved to Broadway starring Patti LuPone as Eva and Mandy Patinkin as Che. (Patti was the mom in the TV series "Life Goes On" on ABC in the early 90s and Mandy was on "Chicago Hope" on CBS in the late 90s and most recently on "Homeland" on Showtime. Madonna, yes the Material Girl, played Evita in the 1996 musical film along with Antonio Banderas. Madonna actually won a Golden Globe for her performance. The production runs Thursdays, Fridays & Saturdays at 7:30 p.m. Saturday matinees at 3 p.m. and Sunday matinees at 4 p.m. Tickets can be ordered online at DiamondHeadTheatre.com. ~ Lance Rae



ALERT!

brought to you by
The Waikiki Aquarium

open daily from 9 am - 4:30 pm

March 18-20

Box Jellyfish Window

Teaching Hawaii about jellyfish and other ocean creatures for over a century





WAY MORE THAN A LUAU

Tell your guests about our 42 acres of adventure, food and shopping. They'll enjoy six interactive island villages, canoe tours and parades, and our spectacular evening show. Also, voted Hawaii Magazine's Reader's Choice "Best Luau on Oahu."



**BUY THE ALI'I LUAU PACKAGE
AND SAVE OVER \$50**

Compared to a la carte pricing.



FOR DETAILS SEE YOUR PCC REPRESENTATIVE.

808-293-3333 or POLYNESIA.COM

Unforgettable Island Adventures. Starting Daily at Noon. Closed Sundays.

Some restrictions apply.



STRIPSTEAK



STEAKHOUSE REIMAGINED

Introducing Chef Michael Mina's evocative and modern steakhouse to your neighborhood infused with the spirit of Aloha.

As a way to say Mahalo for your continued support, we're introducing...

—THE STRIPSTEAK WAIKIKI GUEST— REFERRAL PROGRAM

For every 50 guests referred, STRIPSTEAK Waikiki will send you a \$100 Gift Card. To join the program please contact: events@stripsteakwaikiki.com



PRIVATE DINING

STRIPSTEAK Waikiki is also available for private events, please contact: events@stripsteakwaikiki.com

Follow Us @StripSteak44

StripSteak Waikiki at International Market Place
2330 Kalakaua Avenue, Suite 330 Honolulu, HI 96815
www.StripSteakWaikiki.com | 808.800.8094

IS IT SOUP YET?

Continued from page 1

beef, bean and every possible kind of soup. The line to get in stretched down Nuuanu Avenue all the way back to King Street.

The next stop for soup was the top level parking outside the old Sear's store at Ala Moana. Taking it up a notch, tables and chairs, live music, giant tents and a wine and beer bar were added. That space is now Bloomingdale's of course, so the new location in the Pomaikai Ballroom at Dole Cannery has the perk of being inside where rain won't endanger the hotplates and crowd flow can be managed.

At the event, guests pick a handcrafted ceramic bowl and then pick a soup of their choice from over 20 of Oahu's top chefs. Their bowl will be packaged to take home and the soup served in disposable bowls – no dishwashing necessary. Adult beverages will be sponsored by Kona Brewing Co. and Barefoot Wine, and while imbibing; there will be plenty of silent auction items to browse through.

So, who's in the kitchen? There's too many to mention, but a few names include the following: Chef Lee Anne Wong of Koko Head Cafe who will be making Ulu Coconut Bisque with Moringa Pistou and fried curry leaf. Chef Marc Freiberg of Mariposa who will be making Mariposa's Famous Kahuku Corn Chowder with Crabmeat and Popcorn. Chef Monica Toguchi of Highway Inn will offer Lychee Wood Smoked Hau'ula Tomato Bisque Soup. Chef Jason Schoonover from 12th Avenue Grill will present a Big Island Broccoli, Maui Brewing Company Pueo Pale Ale Beer Cheese Soup and Chef Mark Noguchi of the Pili Group will make Ludovico Farm White Chicken Chili to name a few. In all, there will at least twenty different soups to choose from, including dairy-free, vegan and Paleo options..

In addition to soup, guests can enjoy a free piece of Pineapple Upside-down Cake from The Patisserie by bringing bring a canned or non-perishable food item to donate to Aloha Harvest's Fill the Truck Food Drive. This is a perfect reason to clean out cabinets and give to Hawaii's hungry. All donated foods will be distributed free of charge to social service agencies that feed the hungry and homeless on Oahu

The beneficiary, Aloha Harvest, rescues excess quality food from donors and delivers it same day, free of charge, to nonprofit agencies serving Hawaii's needy. In 2016, Aloha Harvest rescued over 2.2 million pounds of perishable and



Avocado Crema by Cristina Curp of food blog TheCastawayKitchen.com is one of 21 soups being featured at the event. The custom made bowl in the photo was created by potter Mark Kuhn who has been making bowls for the event since 2015 and is co-chairing the event with his wife Stacey.

nonperishable food to provide 1,400,000 meals at an estimated cost of only .41 cents per meal.

Most all chefs are happy to participate in such a worthwhile endeavor. "Pili Group is honored to be a part of Empty Bowl Hawaii," says Mark "Gooch" Noguchi. "We have been supporters of Aloha Harvest and their work for several years, so participating in an event that gives back to them and assists in their efforts to reduce food waste in Hawaii while feeding our hungry is a privilege. Food waste is a big problem in the world right now and as chefs it is our responsibility to be stewards of honoring ingredients and those who work hard to produce them by making sure they don't go to waste."

Over at the Hawaii Potters Guild, gathered around the kiln, the potters were mixing glaze, working at a frantic pace to finish as many bowls as possible. Hundred of potters have joined together to meet an ambitious goal of making 3,000 bowls for this event. Every step is carefully programmed. As one long-time member describes it, "first we prepare the clay, throw the bowl on the fast turning wheel, dry, fire, cool, glaze in amazing colors, fire again, cool again and then 'it's soup ready'. Some members are professional potters, some teachers and college instructors, many are seasoned vets often award winners in major art exhibitions. They all agree that it is about the process – and this time, about the cause.

Empty Bowl Hawaii takes place on March 31st from 5 – 8:30 p.m. at Pomaikai Ballrooms at Dole Cannery. For the first time, Empty Bowl Hawaii will offer a limited amount of early entry VIP tickets. Tickets start at \$30 and go up to \$75. Direct any questions to 537-6945, For a complete list of participating chefs and their dishes go to emptybowlhawaii.org. ~ Lynn Cook



Shoppers search for the perfect bowl that matches their style during the 2015 Empty Bowl Hawaii that was hosted in Kaka'ako



WARD VILLAGE.

FREE EVENTS AT WARD VILLAGE



WEEKLY—Sessions welcome all ages and skill levels taught by CorePower Yoga instructors



MONTHLY—Features independent films curated by the Hawaii International Film Festival and themed activities in an extraordinary outdoor theater setting.



MONTHLY—Brings the abundance of the country into the heart of the city with fresh-locally grown fruits, vegetables, meats and treats.



MONTHLY—Celebrates Hawaiian culture and language through performances by beloved hula halau and Hawaiian musicians.

Visit WardVillage.com/events for full schedule.
#weareward



Eurocinema Returns

with a new name and a new date

The Hawaii European Film Festival is back! For those of you familiar with the event, you might have been wondering where it was last year. Organizers changed the timing of the event from late fall to March after the last Awards Gala to ensure it did not conflict with as many other events as it has in years past. 'Eurocinema,' as it is more commonly referred to, returns this month from March 24th – 26th, with its sparkly, black-tie, star-studded, red carpet gala taking place a few nights later on March 31st at the Moana Surf Rider, A Westin Resort & Spa.

What is Eurocinema Hawaii? For one, it's Hawaii's only European Film Festival, hence the new name. Since part of its mission is to share European culture through film, all of their screenings are offered to the community at no charge. However, for those of you reserving seats online, there will be a nominal service charge covering theater-ticketing operations only. Supported in part by Hawaiian Airlines and the HTA, the festi-



Hawaii Five-O star Daniel Dae Kim poses on the red carpet at last year's Award Gala with HEC President Patrick Gey and his wife Marisa.

val draws attendance from around the world in addition to the large European community we have here in Hawaii.

Patrick Gey, President of the Hawaii European Film Festival says about the date change... "We are thrilled with the festival's move to Spring 2017. It supports the marketing objectives of our presenting sponsors and welcomes the stunning revitalization of our film venue partner, Consolidated Theatres. The new dates also allow the Festival and its intercultural mission to serve the community more effectively during an opportune industry month."

This year the Hawaii European Film Festival announced a new partnership with Consolidated Theatres. All screenings for this year's event will be held at the Ward Theatres with TITAN XC, the latest in sound technology.

This year's movie line-up is as follows. Tickets are free, but a nominal service charge may apply to cover theater-ticketing operations only. Get your seats early if interested. Films always sell out.

Friday, March 24th

THE COMMUNE
Denmark/ Sweden/ Netherlands
111 minutes | Dramey

The film from Danish author Thomas Vinterberg (*The Hunt*, *The Celebration*) focuses on a middle-aged professional couple in 1970s Denmark who decide to experiment with communal living by inviting a group of friends and random eccentrics to cohabit with them in a sprawling house.

Opening Night Film
I, DANIEL BLAKE
UK | 100 min | Drama

Palme d'Or winner for Best Feature Film at the Cannes Film Festival: A middle-aged carpenter, who requires state welfare after injuring himself, is joined by a single mother in a similar scenario.

Saturday, March 25th

THE STUDENT
Russia | 118 min | Drama

A high school student in contemporary Russia becomes convinced that the world has been lost to evil, and begins to challenge the morals and beliefs of the adults around him.

DEATH IN SARAJEVO
Bosnia | 84 min | Political Thriller

Bosnia Entry for Best Foreign Language Film: A major hotel in Sarajevo will receive an important visit on the anniversary of the assassination of Archduke Franz Ferdinand, the attack that triggered World War. Chaos ensues as the manager

of the place waits for a special French guest, workers in the kitchen are preparing a strike and journalist records a television show on the roof.

Sunday, March 26th

THE LAND OF THE ENLIGHTENED
Belgium | 87 min | Documentary

A gang of Afghan kids from the Kuchi tribe dig out old Soviet mines and sell the explosives to children working in a lapis lazuli mine. When not dreaming of the time when American troops finally withdraw from their land, another gang of children keeps tight control on the caravans smuggling the blue gemstones through the mountains of Pamir.

JULIE AND THE SHOE FACTORY
France | 83 min | Musical

This is a romantic musical comedy treating social issues. Inspired by the films of Jacques Demy and Stanley Donen, the whimsical film centers on a practical young woman whose dreams of financial stability are threatened when it seems that the luxury shoe factory where she has recently started to work will be sold and the business moved off shore.

I WHO ONLY LOVE YOU
Italy | 102 min | Romantic Comedy

Fifty-five year old Ninella has a big love, don Mimi, the man she hadn't been allowed to marry. But fate offers her an unexpected gift when her daughter gets engaged to none other than the son of the man she had always coveted. With irony and sentiment, it is an adventurous exploration of love - love that arrives - or returns - when least expected, puts you back in the game and then takes you where it wills.

Closing Night Film
THINGS TO COME
France | 102 min | Drama

Nathalie teaches philosophy at a high school in Paris. She is passionate about her job and particularly enjoys passing on the pleasure of thinking. Married with two children, she divides her time between her family, former students and her very possessive mother. One day, Nathalie's husband announces he is leaving her for another woman. With freedom thrust upon her, Nathalie must reinvent her life. Starring Isabelle Huppert, the award-winning actress from the movie "Elle" currently up for an Oscar.

Friday, March 31st

HEC AWARDS GALA

The Festival wraps up with a black tie, red carpet gala on March 31st at HEC's annual Awards Gala at the Moana Surf Rider. Some of Hawaii's top chefs will be on hand to prepare small bites for the crowd. Tickets are \$150 and available online. Hong Kong actress Nancy Kwan will be on hand to receive the Lifetime Achievement Award. A high-profile celebrity couple who has yet to be announced is slated to receive this year's Hawaii European Cinema Vanguard in Film Award. Complete details will be forthcoming in the next few weeks, but until then, you can expect to see a few big names on the red carpet that evening, including some Hawaii Five-0 stars.

For more information on the Awards Gala, reserve your tickets and see the complete film schedule go to hawaieurocinema.org. ~ Pam



Chef's Corner

Hakkasan International Development Chef Ho Chee Boon

This Michelin-starred chef has 28 years of experience at some of the world's most renowned Asian restaurants and has been at the helm of Yauatcha's kitchen since 2003. He moved to the US in 2012 to launch Hakkasan New York and was awarded a Michelin star within eight months. He heads up all US openings as the international development chef working to create custom menus for each new Hakkasan location inspired by the local flavors and influences, including the recently opened Yauatcha in Waikiki.

What is your first childhood food memory?

Perhaps it is my mother's? Till now I still think my mom's cooking is the best in this world!

When did you decide you wanted to be a chef?

When I was a little boy.

What was your first job in the industry?

A very long time ago very young, washing dishes I remember wanting to be a chef

How did you learn all the techniques you're known for?

When I was young I was very interested in cooking more items going to many popular restaurants and learn what they are doing. I got many ideas from what they did.

Can you remember making a dish that didn't work?

I love all the food that I am doing, normally when I have the idea of how to make this food, I know the ingredients that go with what. Normally it's been pretty good, mostly adjustment on presentations I guess I've been lucky.

Who would you consider your mentor and why?

Mother, she raised me.

Would you describe yourself as a Cantonese chef?

I just want to cook the best Chinese food with the best ingredients, there's no title here.

Favorite ingredient you like to work with and why?

I have a long list of favorite ingredients, especially healthy products. I use garlic the most, because it adds a nice flavor and aroma.

How long have you been with the Hakkasan Group?

I opened New York and London first. Then I left and came back, it was so many years ago I can't remember.

How many Hakkasan restaurants have you opened?

I think 13.

Will you be presenting the same menu you present at the other restaurants or will the Honolulu menu differ?

I like using local ingredients when I can, we will have some special dishes like the crab and taro croquette and others.

Where are you based? Been to Hawaii before?

Last year Dubai, London, Las Vegas, San Francisco, Only to come to help prepare menu. This is my first time to Hawaii.

How long do you get to stay in the islands?

Till it's perfect here, so I don't know yet.

What's been your favorite thing to do while in Hawaii?

The weather is so good! I think it is a very good city, is now one of my favorite cities.

Where will they send you next?

Houston, then Jakarta.

After you leave, how do you ensure your menu is being presented properly?

I only leave when everything is stable and perfect. Keep eyes on it from every angle. If anybody is ever concerned about food quality I would come back immediately.

What is your goal with each new restaurant?

The reason I stay in this company, is because we can bring authentic Cantonese Chinese cuisine to the world – get into the culture and use local product and we can let people enjoy dim sum with local ingredients.

Tell us what you like to do for fun?

I like sports. Soccer very much, Good player. I love Barcelona!

Is there anything else you want to share?

I don't feel like I am a famous chef, I just do my best all the time and want to bring Chinese cuisines to expand worldwide. I want to offer my people and my chefs the access to be whatever they want to be.



Har Gau

Note: this will make enough pastry for approximately 100 har gau dumplings. Attempting to make a smaller amount will make it difficult to achieve the correct consistency of the dough.

Ingredients:

Submerge 9kg of fat, meaty prawns in cold water for around 30 minutes. This ensures that the prawns will taste crisp and firm. Drain the prawns properly and then chop to a fine consistency in a food processor (or by hand). Add your seasonings: half a tablespoon of potato starch, half a teaspoon of ground white pepper, one tablespoon of salt, two of sugar and 420ml of vegetable oil.

Directions:

Freeze for two to three hours. The prawn mixture will solidify, making it easier to wrap the har gau. While the prawns are freezing, make the dough. Sift 600g potato starch and 600g wheat flour into a large bowl. Slowly pour a litre of hot water into the bowl whilst stirring the gradually thickening flours with a palette knife or a wooden spoon. Once the dough has come together, lightly knead until it becomes a smooth ball of pastry. Lightly flour the surface. Separate the pastry dough into small round balls. To make the har gau, roll one pastry skin out until it is 6mm thick. Place the pastry skin in the palm of the hand and spoon one tablespoon of the prawn filling into the centre. Using the index finger and thumb, mold the pastry skin upwards around the filling and pinch it together into a shell shape. Place the har gau into a dim sum steamer basket and steam for approximately three and a half minutes. Serve piping hot.

Yauatcha is located on the Grand Lanai of the International Market Place

Open daily from 11:30 a.m. - 11 p.m. • Phone: 739-9318

Web: yauatcha.com • Twitter/Instagram/FB: @YauatchaWaikiki



CALL IT EARLY BIRD,
CALL IT NIGHT CAP.

HAPPY HOUR IS 20% OFF
THE ENTIRE MENU

10X A WEEK

MON-FRI 3-6PM • SUN-THU 12PM-MIDNIGHT



giovannipastrami.com 808-923-2100

227 Lowers Street in Waikiki

*Happy Hour is dine-in only. Visit us for details.

MAC 24/7
Modern American Eatery

M.A.C. WEDNESDAYS

Industry Night 10pm – 3am
Live DJ 11pm – 2am

50% OFF ALL FOOD*

HALE WINA AWARD WINNER
Best Gourmet Comfort Food
Honolulu Magazine

\$3 valet parking when dining

808-527-6164
MAC247Waikiki.com
2500 Kuhio Avenue
Honolulu, HI 96815

*Reservations apply. Some restrictions apply. See us for details. Industry Night requires.

OpenTable



Let's be Together...

DINING ▸ ENTERTAINMENT ▸ PAU HANA ▸ EAT ▸ DRINK ▸ BE MERRY ▸ HAPPY HOUR

MONDAY

Barefoot Beach Café at Queen's Beach 924-2233
Contemporary Ukulele
Sonny Kapu 6-8:30pm

Chart House Waikiki 941-6660
Live Contemporary Hawaiian
Tito Berinobis & David Kauahikaua 6:30-9:30pm

Cheesecake Factory 924-5001
Classic Hawaiian
Christian Yrizarry Duo 8-11pm

Duke's Canoe Club Waikiki 922-2268
Live Contemporary Hawaiian
Taz Vegas 4-6pm
Ellsworth Simeona 9:30-12am

Hard Rock Cafe 955-7383
Live Contemporary
Candy Bullets 9-11pm

House Without a Key 923-2311
Live Hawaiian & Hula by Skyler Kamaka
DeLima Ohana 5:30 - 8:00pm

Hula Grill 923-HULA
Live Contemporary Hawaiian
Eric Lee 7-9pm

Kani Ka Pila Grille 924-4992
Live Contemporary Hawaiian
Sean Naauao 6-9pm

LBL at the Hilton Waikiki Beach Hotel 922-0811
Live Contemporary Acoustic Hits
Sean Cleland 6-9pm

Lewers Lounge 923-2311
Live Contemporary & Light Jazz
Noly Pa'a 8:30-12:30am

LuLu's 926-5222
Live Contemporary / Industry night 50% off
Jason Laeha 6-9 p.m.

Mahina & Sun's 923-8882
Kanikaplia Jam Poolside on the Lanai
Kimo Opiana Jr. 7-9pm

Mai Tai Bar at the Royal Hawaiian 923-7311
Live Contemporary Hawaiian with Hula Dancer
Dave Watanabe 8-10 p.m.

Rumfire 921-4600
Solo Contemporary Guitarist
Jeremy Cheng 5-8pm

Signature Prime Steak 949-3636
Contemporary Pianist in the bar
Isao Motomochi 6-9pm

Sky Waikiki 979-7590
Live Contemporary
Yoza 6-9pm

Sunrise Pool Bar at the Modern 943-5800
Live Contemporary
Alex Oasay 5-8pm

The Edge at the Sheraton 921-4600
Live Hawaiian music with a fire dancer at 7:30 p.m.
Meheu Duo 6:30-8:30pm

The Study at the Modern 943-5800
Live Contemporary Hawaiian
Kaleo 7-10pm

Tiki's Grill & Bar 923-TIKI
Live Contemporary Hawaiian
P & L Experience 6-8:30pm
The Kristi Masuhara Band 9-11pm

Tommy Bahama Restaurant 923-8785
Live Contemporary Hawaiian
Johnny Helm 6-9pm

Tropics Bar & Grill 949-4321
Live Contemporary Hawaiian
Acoustik Playground 5:30-8:30pm

TUESDAY

Barefoot Beach Café at Queen's Beach 924-2233
Contemporary Ukulele
Shaka Madali 6-8:30pm

Bin1901 at the Moana 921-4600
Piano Wine Bar
Scott Smith 6:30-9:30pm

Chart House Waikiki 941-6660
Live Contemporary Hawaiian
The Camarillo Brothers 6:30-9:30pm

Cheesecake Factory 924-5001
Classic Hawaiian
Beau Cody Duo 8-11pm

Duke's Canoe Club Waikiki 922-2268
Live Contemporary Hawaiian
Haumea Warrington & Mike 4-6pm
Ellsworth Simeona 9:30-12am

Hard Rock Cafe 955-7383
Live Contemporary
Piranha Brothers 9-11pm

House Without a Key 923-2311
Live Hawaiian & Hula by Radasha Ho'ohuli
Po'okela 5:30 - 8:00pm

Hula Grill 923-HULA
Live Contemporary Hawaiian
Kamuela Kahoano 7-9pm

Kani Ka Pila Grille 924-4992
Live Contemporary Hawaiian
Weldon Kekauoha 6-9pm

LBL at the Hilton Waikiki Beach Hotel 922-0811
Live Contemporary Funk, Jazz, Hip Hop & Reggae
Jason Laeha 6-9pm

Lewers Lounge 923-2311
Live Contemporary & Light Jazz
Maggie Herron & Rocky Holmes 8:30-12:30am

LuLu's 926-5222
Live Contemporary
Johnny Helm 6-9pm

Mahina & Sun's 923-8882
Bossa Nova Poolside on the Lanai
Sandy Tsukiyama 7-9pm

Mai Tai Bar at the Royal Hawaiian 923-7311
Live Contemporary Hawaiian with Hula Dancer
Kapala Duo 6:30-9:30pm

Rumfire 921-4600
Solo Contemporary Guitarist
Randy Allen 5-8pm

Signature Prime Steak 949-3636
Contemporary Pianist in the bar
James Woo 6-9pm

Sky Waikiki 979-7590
Live Contemporary
John Akapo 6-9pm

Sunrise Pool Bar at the Modern 943-5800
Live Contemporary Hawaiian
Cory Oliveros 5-8pm

The Edge at the Sheraton 921-4600
Live Hawaiian music with a fire dancer at 7:30 p.m.
Ho'okani Duo 6:30-8:30pm

The Study at the Modern 943-5800
Live Contemporary Hawaiian
Alex Oasay & Jeremy Cheng 7:30-10:30pm

Tiki's Grill & Bar 923-TIKI
Live Hawaiian - \$2 Taco Tuesdays
K.B. Riley 5:30-8:30pm
Sani & Friends 9-11pm

Tommy Bahama Restaurant 923-8785
Live Contemporary Hawaiian
Chris Mercado 6-9pm

Tropics Bar & Grill 949-4321
Live Contemporary Hawaiian
Kailua Bay Buddies 5:30-8:30pm

WEDNESDAY

Barefoot Beach Café at Queen's Beach 924-2233
Instrumental Ukulele
Sonny Kapu 6-8:30pm

Bin1901 at the Moana 921-4600
Piano Wine Bar
Scott Smith 6:30-9:30pm

Chart House Waikiki 941-6660
Live Contemporary Hawaiian
Tito Berinobis & David Kauahikaua 6-10:30pm

Cheesecake Factory 924-5001
Classic Hawaiian
Kimo Artis Duo 8-11pm

Duke's Canoe Club Waikiki 922-2268
Acoustic, Soul, R&B
Haumea Warrington 4-6pm
Ellsworth Simeona 9:30-12am

Gordon Biersch 599-4877
Jazz Wednesdays
Varying Artists 6:30-9:30pm

Hard Rock Cafe 955-7383
Live Contemporary
Saloon Pilots (or others) 9-11pm

House Without a Key 923-2311
Live Hawaiian & Hula by Lauren Matsumoto
Pa'ahana 5:30 - 8:00pm

Hula Grill 923-HULA
Live Contemporary Music
Brandon Serrano 7-9pm

Hy's Steak House 922-5555
Live Soft Contemporary
Audy Kimura 6:30-10pm

Kani Ka Pila Grille 924-4992
Live Contemporary Slack Key
Ben & Malia 3-5pm
Mike Kaawa 6-9pm

LBL at the Hilton Waikiki Beach Hotel 922-0811
Live Contemporary Funk, Jazz, Hip Hop & Reggae
Izik 6-9pm

Lewers Lounge 923-2311
Live Contemporary & Light Jazz
Maggie Herron & Rocky Holmes 8:30-12:30am

LuLu's 926-5222
Live Contemporary Hawaiian
Mango Season 6-9am

Mahina & Sun's 923-8882

E Pili Kākou

DINING ▶ ENTERTAINMENT ▶ PAU HANA ▶ EAT ▶ DRINK ▶ BE MERRY ▶ HAPPY HOUR

Jazz, Pop & Rock Poolside on the Lanai
 Verge & Paula 7-9pm
Mai Tai Bar at the Royal Hawaiian 923-7311
 Live Contemporary Hawaiian with Hula Dancer
 Eric Lee Duo 6:30-9:30pm
Roy's Hawaii Kai 396-7697
 Acoustic & Slack Key Top 40
 Dayton Watanabe 6:30-9:30pm
Rumfire 921-4600
 Solo Contemporary Guitarist
 Alex Oasay 5-8pm
Signature Prime Steak 949-3636
 Contemporary Pianist in the bar
 Pierre Grill 6-9pm
Sky Waikiki 979-7590
 Live Contemporary
 Randy & Kanoe 6-9pm
Sunrise Pool Bar at the Modern 943-5800
 Live Contemporary Hawaiian
 Tahiti Rey & Sean Cleland 5-8pm
The Edge at the Sheraton 922-4422
 Live Hawaiian music with a fire dancer at 7:30 p.m.
 Keoni Ku Duo 6:30-8:30 pm
The Study at the Modern 943-5800
 Live Contemporary Hawaiian
 Melanie and Drew 6:30-9:30pm
Tiki's Grill & Bar 923-TIKI
 Live Contemporary - 1/2 off Wine Wednesdays
 Canoes for Rent 5:30-8:30pm
 Johnny Helm 9-11pm
Tommy Bahama Restaurant 923-8785
 Live Contemporary Hawaiian
 Randy Allen 6-9pm
Tropics Bar & Grill 949-4321
 Live Contemporary Rock
 Acoustik Playground 5:30-8:30pm

THURSDAY

Barefoot Beach Café at Queen's Beach 924-2233
 Instrumental Ukulele
 Shaka Madali 6-8:30pm
Bin1901 at the Moana 921-4600
 Piano Wine Bar
 Scott Smith 6:30-9:30pm
Chart House Waikiki 941-6660
 Live Contemporary Hawaiian
 Alika Souza Duo 6:30-10pm
Cheeseburger Waikiki 941-2400
 Contemporary / Old School Rock
 Jeremy Chang 6:30-9:30pm
Cheesecake Factory 924-5001
 Classic Hawaiian
 Kaimi Duo (3/2) 8-11pm
 Alika Souza Duo (3/9, 3/23) 8-11pm
 Ko'olau Duo (3/16, 3/30) 8-11pm
Duke's Canoe Club 922-2268
 Live Contemporary Hawaiian
 Haumea Warrington 4-6pm
 Denny Ono Duo (3/2) 9:30-midnight
 Local Uprising (3/9) 9:30-midnight
 Johnny Kukui (3/16) 9:30-midnight
 Scott Magz & Brady K (3/23) 9:30-midnight
Hard Rock Cafe 955-7383

Live Contemporary
 Kailua Bay Buddies 9-11pm
House Without a Key 923-2311
 Live Hawaiian & Hula by Radasha Ho'ohuli
 Pa'ahana 5:30 - 8:00pm
Hula Grill 923-HULA
 Live Contemporary Hawaiian
 Kamuela Kahoano 7-9pm
Hy's Steak House 922-5555
 Live Soft Contemporary
 Audy Kimura 6:30-10pm
Kani Ka Pila Grille 924-4992
 Live Contemporary Hawaiian
 Jeff Rasmussen & Robi 3-5pm
 Donald Kaulia 6-9 pm
LBLE at the Hilton Waikiki Beach Hotel 922-0811
 Live Contemporary Pop/Rock
 Sunway 6-9pm
Lewers Lounge 923-2311
 Contemporary Jazz
 Maggie Herron & Rocky Holmes 8:30-12:30am
LuLu's 926-5222
 Live Contemporary Hawaiian
 Local Uprising 6-9pm
Mahina & Sun's 923-8882
 Mellow Acoustic Sounds Poolside on the Lanai
 Keith Omizo 7-9pm
Mai Tai Bar at the Royal Hawaiian 923-7311
 Live Contemporary Hawaiian with Hula Dancer
 Delima Ohana 6:30-9:30pm
Michel's at the Colony Surf 923-6552
 Live Slack Key
 Jeff Peterson 7:30-10:00pm
Roy's Hawaii Kai 396-7697
 Acoustic Hawaiian Guitar
 Steve English 6:30-9:30pm
Rumfire 921-4600
 Solo Contemporary Guitarist
 Johnny Helm 5-8pm
Signature Prime Steak 949-3636
 Contemporary Pianist in the bar
 Isao Motomochi 6-9pm
Sky Waikiki 979-7590
 Live Contemporary
 Tahiti Rey 6-9pm
Sunrise Pool Bar at the Modern 943-5800
 Live Contemporary Hawaiian
 Christian Yrizarry Duo 5-8pm
The Edge at the Sheraton 921-4600
 Live Hawaiian music with a fire dancer at 7:30 p.m.
 Christian Yrizarry Duo 6:30-8:30pm
The Study at the Modern 943-5800
 Live Contemporary Hawaiian
 Simple Souls 6:30-9:30pm
Tiki's Grill & Bar 923-TIKI
 Hot Hula Thursdays - hula dancers perform
 Malu the Band 5:30-7:30pm
 Ellsworth Simeona 8:30-10:30pm
Tommy Bahama Restaurant 923-8785
 Live Contemporary Hawaiian
 Chris Mercado 6-9pm
Tropics Bar & Grill 949-4321
 Live Contemporary Hawaiian
 Nohelani Cypriano 5:30-8:30pm

FRIDAY

Barefoot Beach Café at Queen's Beach 924-2233
 Live Contemporary Hawaiian with Beach BBQ
 Art Kalahiki & Friends 5:30-8:30pm
Bin1901 at the Moana 921-4600
 Piano Wine Bar
 Scott Smith 6:30-9:30pm
Chart House Waikiki 941-6660
 Live Contemporary Hawaiian
 Mark Yim's Pilikia I 6-9pm
 Mark Yim's Pilikia II 9:30-12:30am
Cheeseburger Waikiki 941-2400
 Contemporary Hawaiian
 Alex or Aku 6:30-9:30pm
Cheesecake Factory 924-5001
 Live Contemporary
 Johnny Helm Duo 8-11pm
Dave & Busters 589-2215
 Pau Hana Fridays Live Local Bands
 Varying Hawaiian Artists 6-8pm
Duke's Canoe Club Waikiki 922-2268
 Live Contemporary Hawaiian
 Maunalua 4-6pm
 Kaiona Duo (3/3) 9:30 -12am
 Christian Yrizarry Duo (3/10) 9:30 -12am
 Kona Chang Duo (3/17) 9:30 -12am
 Alika Souza Duo (3/24) 9:30 -12am



you are an important part of
bills 'ohana
 concierges & guest services staff
 receive our 'ohana discount
 of 20% off your entire bill
 with valid id
 does not apply to happy hour
 may not be combined w/ other offers



Let's be Together...

DINING ▸ ENTERTAINMENT ▸ PAU HANA ▸ EAT ▸ DRINK ▸ BE MERRY ▸ HAPPY HOUR

Giovanni Pastrami 923-2100
Live Acoustic
 Varying Artists 10pm-last call
Hard Rock Cafe 955-7383
Live Contemporary
 The Fresh Preps 10-12am
House Without a Key 923-2311
Live Hawaiian & Hula by Kanoë Miller
 Hiram Olsen Trio 5:30 - 8:00pm
Hula Grill 923-HULA
Aloha Friday Lunch Luau with hula dancer
 David Asing 12:30-2:30pm
 Keoki & Russell 7-9pm
Hy's Steak House 922-5555
Live Soft Contemporary
 Audy Kimura 6:30-10pm
Hard Rock Cafe 955-7383
Live Contemporary
 The Fresh Preps 10pm-12am
Japengo Steak & Seafood 923-1234
Contemporary, Pop, Rock
 Joanna G 5 - 9pm
Kani Ka Pila Grille 924-4992
Live Hawaiian Contemporary
 Christian Yrizzary 3-5pm
 Ho'okena 6-9pm
LBLÉ at the Hilton Waikiki Beach Hotel 922-0811
Live Contemporary Pop/Rock
 Sunway 6-9pm
Lewers Lounge 923-2311
Live Contemporary Jazz
 Maggie Herron & Rocky Holmes 8:30-12:30am
Mahina & Sun's 923-8882
Slack Key Poolside on the Lanai
 Jeff Rasmussen 7-9pm
Mai Tai Bar at the Royal Hawaiian 923-7311
Live Contemporary Hawaiian with Hula Dancer
 Kapala Duo 6:30-9:30pm
Michel's at the Colony Surf 923-6552
Live Slack Key Stylings & Jazz

Jeff Peterson & Ernie Provencher 6:30-10pm
Roy's Hawaii Kai 396-7697
Keyboardist
 Brian Robert Shaw 6:30-9:30pm
Roy's Ko Olina 676-7697
Slack Key Guitar
 Chris Rego 5:30-8pm
Rumfire 921-4600
Solo Contemporary Guitarist
 Tim Rose 5-8pm
Signature Prime Steak 949-3636
Contemporary Pianist in the bar
 Grant Carvalho 6-9pm
Sky Waikiki 979-7590
Live Contemporary
 John Akapo 5-8pm
The Edge at the Sheraton 921-4600
Live Hawaiian music with a fire dancer at 7:30 p.m.
 Delima Ohana Duo 6:30-8:30pm
The Study at the Modern 943-5800
Live Contemporary Hawaiian
 Tahiti Rey 6:30-9:30pm
Tiki's Grill & Bar 923-TIKI
Live Contemporary Hawaiian
 Randy Allen 5-7pm
 Vaihi 7:30-9:30pm
 The Kristi Masuhara Band 10:30-midnight
Tommy Bahama Restaurant 923-8785
Live Contemporary Hawaiian
 Chris Murphy 6-9pm
Tropics Bar & Grill 949-4321
Live Contemporary Hawaiian
 Piranha Brothers 3:30-6:30pm
 Nohelani Cypriano 8-10:30pm

SATURDAY

Barefoot Beach Café at Queen's Beach 924-2233
Beach BBQ with Live Contemporary Hits
 Johnny Kukui 5:30-8:30pm
Bin1901 at the Moana 921-4600
Piano Wine Bar
 Scott Smith 6:30-9:30pm
Chart House Waikiki 941-6660
Live Contemporary Hawaiian
 Tito Berinobis & Billy Beimes 7-12pm
Cheeseburger Waikiki 941-2400
Contemporary Hawaiian
 Alex or Aku 6:30-9:30pm
Cheesecake Factory 924-5001
Classic Hawaiian
 Dennis McClees Duo 8-11pm
Duke's Canoe Club Waikiki 922-2268
Live Hawaiian Entertainment
 Beach 5 (3/4) 4-6pm
 Vaihi (3/11) 4-6pm
 Kapena (3/18) 4-6pm
 Kaiona Band (3/25) 4-6pm
 Camarillo Brothers 9:30-12am
 Jeff James Duo (3/11) 9:30-12am
 Darrell Aquino Duo (3/18) 9:30-12am
Giovanni Pastrami 923-2100
Live Acoustic
 Varying Artists 10pm-last call
Hard Rock Cafe 955-7383

Live Contemporary
 EMKE 10-12am
House Without a Key 923-2311
Hawaiian & Hula by Kanoë Miller
 Hiram Olsen Trio 5:30 - 8:00pm
Hula Grill 923-HULA
Live Traditional Hawaiian with dancer
 Kaipo Dabin & friends 7-9pm
Hy's Steak House 922-5555
Live Soft Contemporary
 Audy Kimura 6:30-10pm
Japengo Steak & Seafood 923-1234
Contemporary, Pop, Rock
 Dave Toma 5 - 9pm
Kani Ka Pila Grille 924-4992
Live Contemporary Hawaiian
 Kamakakehau Fernandez 3-5 pm
 Ka Hehena 6-9pm
LBLÉ at the Hilton Waikiki Beach Hotel 922-0811
Live Contemporary Blues & R&B
 Tahiti Rey 6-9pm
Lewers Lounge 923-2311
Live Contemporary Jazz
 Maggie Herron & Rocky Holmes 8:30-12:30am
Mahina & Sun's 923-8882
Soul Poolside on the Lanai
 Maryanne Ito 7-9pm
Mai Tai Bar at the Royal Hawaiian 923-7311
Live Contemporary Hawaiian with Hula Dancer
 Kapala Duo 6:30-9:30pm
Michel's at the Colony Surf 923-6552
Live Contemporary Slack Key & Jazz
 Jeff Peterson 7-11pm
Roy's Hawaii Kai 396-7697
Acoustic Guitar
 Jimmy Funai 6-9:30pm
Roy's Ko Olina 676-7697
Slack Key Guitar
 Chris Rego 5:30-8pm
Rumfire 921-4600
Solo Contemporary Guitarist
 Sean Clealand 5-8pm
Signature Prime Steak 949-3636
Contemporary Pianist in the bar
 Grant Carvalho 6-9pm
Sky Waikiki 979-7590
Live Contemporary
 John Akapo 6-9pm
Sunrise Pool Bar at the Modern 943-5800
Live Contemporary Hawaiian
 Kainalu 5-8pm
The Edge at the Sheraton 921-4600
Live Hawaiian music with a fire dancer at 7:30 p.m.
 Tino Jacobs Duo 6:30-8:30pm
Tiki's Grill & Bar 923-TIKI
Live Contemporary Hawaiian & Reggae
 Johnny Helm 5-7pm
 Guidance (or others) 7:30-9:30pm
 Ellsworth & Piko 10-midnight
Tommy Bahama Restaurant 923-8785
Live Contemporary Hawaiian
 Chris Murphy 6-9pm
Tropics Bar & Grill 949-4321
Live Contemporary Hawaiian



IL LUPINO
 TRATTORIA & WINE BAR

15% OFF FOR ALL CONCIERGES & GSA
 Il Lupino is pleased to extend a 15% discount to all Concierges and Guests Services Staff (Front Desk, Valet, Porters, etc.). Must show your work I.D. or business card to receive the discount. Not applicable on liquor or specials.

ROYAL HAWAIIAN CENTER • VALIDATED PARKING
 breakfast • lunch • tapas • dinner
 www.ilupino.com • 808.922.3400

E Pili Kākou

DINING ▶ ENTERTAINMENT ▶ PAU HANA ▶ EAT ▶ DRINK ▶ BE MERRY ▶ HAPPY HOUR

Henry Kaponō 4-6pm
Juke Joint 6:30-9:30pm

SUNDAY

Barefoot Beach Café at Queen's Beach 924-2233
Contemporary Hawaiian
Paul Wilcox 11am-2pm.

Chart House Waikiki 941-6660
Live Contemporary Hawaiian
Dean & Dean 6-9pm

Cheesecake Factory 924-5001
Classic Hawaiian
Chris Murphy Duo 8-11pm

Duke's Canoe Club Waikiki 922-2268
Live Hawaiian Entertainment
Henry Kaponō 4-6pm
Derrick Lee (3/5) 9:30-12am
Chris Mercado (3/12) 9:30-12am
Kapena Delima Duo (3/19) 9:30-12am
Typical Hawaiians (3/26) 9:30-12am

Hard Rock Cafe 955-7383
Live Contemporary
Jive Nene (or others) 9-11pm

House Without a Key 923-2311
Live Hawaiian & Hula by Debbie Nakanelua
Pa'ahana 5:30 - 8:00pm

Hula Grill 923-HULA
Live Traditional Hawaiian with dancer
Art Kalahiki Duo 7-9pm

Japengo Steak & Seafood 923-1234
Contemporary, Pop, Rock
Jon Basebase 5 - 9pm

Kani Ka Pila Grille 924-4992
Live Contemporary Hawaiian
Hoku Zuttermeister 6-9pm

Kelley O'Neil's 926-1777
Live Irish Music
Various Celtic Bands 4-7pm

LBLE at the Hilton Waikiki Beach Hotel 922-0811
Live, Energetic Mix of Pop and Rock Hits
Maryann Ito 6-9pm

Lewers Lounge 923-2311
Live Contemporary & Light Jazz
Noly Pa'a 8:30pm - 12am

LuLu's 926-5222
Acoustic R&B
Simple Soulz 7-10pm

Mahina & Sun's 923-8882
Live Jazz on the Lanai
Jegaan Faye 7-9pm

Mai Tai Bar at the Royal Hawaiian 923-7311
Live Contemporary Hawaiian with Hula Dancer
Eric Lee Duo 6:30-9:30pm

Michell's at the Colony Surf 923-6552
Classical Slack Key & Jazz Stylings
Jeff Peterson 6-9pm

Roy's Ko Olina 676-7697
Slack Key Guitar
Chris Rego 5:30-8pm

Rumfire 921-4600
Live Contemporary Hawaiian
Kamuela Kahoano 5-8pm

Signature Prime Steak 949-3636
Contemporary Pianist in the bar
Isao Motomochi 6-9pm

Sky Waikiki 979-7590
Live Contemporary
Da Push-O-Verse 6-9pm

The Edge at the Sheraton 922-4422
Live Hawaiian music with a firedancer at 7:30 p.m.
Ellsworth Simeona Duo 6:30-8:30p

The Study at the Modern 943-5800
Live Contemporary Hawaiian & Jazz
Jeremy Cheng 6-9pm
Smooth Jazz (vaying artists) 10-2am

Tiki's Grill & Bar 923-TIKI
Live Contemporary Hawaiian
Kapu the Band 2:30 - 5:30pm
Vaihi 6-8pm
Ellsworth & Piko 9-11pm

Tommy Bahama Restaurant 923-8785
Live Contemporary Hawaiian
Johnny Helm 6-9pm

Tropics Bar & Grill 949-4321
Live Contemporary Rock & Hawaiian
Piranha Brothers 2-5pm
Beach 5 5:30 - 8:30pm

Uncle's Fish Market & Grill 275-0063
Live Slack Key
Jeff Peterson 5:30-8:30pm

good too, and plan to go back and try it soon. I didn't realize this was a WDI Restaurant, which is the parent company of Wolfgang's and Taormina, so I'm not surprised I liked what they offered. WDI is very consistent. They're currently working on building out the old Keoni's location at the OHANA East so looking forward to seeing what they have to offer there later this year. 921-2330. • **Giovanni Pastrami** has improved their twice-daily happy hour. From 3 - 6 p.m. and 10 p.m. - close daily they will offer 20% off the entire food menu. There are a few new cocktails to choose from as well. 923-2100. • **Waikiki Yokocho** has opened its Ramen Road, 5 stand alone ramen shops towards the back including **Tsujita Ramen** and **Bario**. It's all about the broth and Tsujita didn't work for me, but Bario's was fabulous. Another highlight was **Tempura Meshi Kaneko Hannosuke**. They put out a tempura poached egg that was very memorable. Up front **Nin Nin Curry** offers a French sense of style to their Japanese curries that was quite good. While its theme is similar to *Shirokiya Japan Village Walk*, it is much easier to navigate. Open at 11 a.m. daily, it closes at midnight Sundays through Thursdays and 2 a.m. on weekends. waikiki-yokocho.com. ~ Pam



Hot Lines

Here's a few numbers for you to find out the latest in live music from places that change daily or don't update us regularly, since we can't possible list them all.

Gordon Biersch	599-4877
Irish Rose Saloon	947-3414
Kelley O'Neil's	926-1777
Mai Tai Bar Ala Moana	947-2900
Moose McGillycuddy's	923-0751

Dining Dish



Maui Brewing Co. has finally opened its doors in the former Jimmy Buffett's location. The restaurant offers an extensive list of local brews on tap and craft beers on tap that were previously unavailable on island. All beers on tap will also be available for purchase in growlers to take with you. **Chef Terry Lynch** is committed to preparing everything from scratch with fresh, local ingredients. Open daily from 7 a.m. - 11 p.m., find more information at MauiBrewingCo.com. • **Dave & Buster's** has added some new items to their menu including a few new appetizers like Grilled Smoked Chicken Wings and entrees such as a Angry Orchard Hard Cider Pulled Pork Sandwich and some new cocktails. 589-2215. • I was invited to **TR Fire Grill** recently for lunch and was pleasantly surprised to find my friend **John Hoffman** working there as GM. John comes from a fine dining background so he has done wonders with their beer and wine list and the food was very satisfying. The Chicken & Waffles was really good, so much so, that I bet their Shrimp & Grits is pretty



Dining Calendar

March 25: beachhouse at the Moana Master Sommelier Patrick Okubo hosts an unforgettable evening of Cakebread Cellars wines, paired with five courses from Chef de Cuisine David Lukela. \$125++. 6:30 - 8 p.m. 921-4600.

March 23: Hoku's presents a wine dinner featuring New Zealand's only Master Sommelier, Cameron Douglas pairing a specially curated menu featuring cuisine and wines sourced from New Zealand. \$145++. 739-8760 or restaurants@kahalaresort.com

"I like it best at night, when the city skyline sparkles under starry skies and live music is offered. The best part is it is incredibly priced...and the food is absolutely delicious...a hint of Hawaiian culture along with fantastic views and flavors!"
-Tad Polon Tapu, Maui (Cavalier 7/1)

Casual Beachfront Dining
Open Daily 7am - 8:00pm
Live Music Nightly 5:30-8:00pm

FULL MENU, CALENDAR, INFO
BarefootBeachCafe.com
808.924.5535 (HAWAII)

EVENTS ARE SUBJECT TO CHANGE WITHOUT NOTICE.

MARCH CALENDAR OF EVENTS

Continuing Events

MONDAY – FRIDAY LYON ARBORETUM TOURS

The lush gardens at the top of the University of Hawai'i Manoa are open for guided tours daily. Knowledgeable guides will introduce the highlights of the botanical rainforest's 193.6 acres. Reservations required. Limit of 12 participants daily. Donations accepted. 988-0461.

MONDAY-FRIDAY FOSTER BOTANICAL GARDENS

Guided garden tours of rare and beautiful plants from tropical regions throughout the world. Foster Botanical Gardens, 50 N. Vineyard. 1 p.m. Adults: \$5. Reservations recommended. 522-7066.

TUESDAYS TOURS OF THE HAWAII THEATRE

Get a behind-the-scenes tour of this historic theatre including history, architecture, and a performance on the 1922 Robert Morton theatre organ. Hawaii Theatre. 11 a.m. – 12 p.m. \$10. 528-0506.

TUESDAYS • KU HA'AHEO

An afternoon of music and hula led by kumu hula Blaine Kamalani Kia. Waikiki Beach Walk, Plaza Lawn. 4:30–6 p.m. waikikibeachwalk.com. FREE.

TUESDAYS KCC FARMERS MARKET

The Saturday Market is so popular they added another day. Head up to Kapiolani Community College to stock up on fresh, island produce, seafood, flowers and more, from several dozen vendors. 4–7 p.m. Free. 848-2074.

FIRST & THIRD TUESDAYS MEET THE MONK SEALS!

Learn about monk seals in the wild and meet two resident seals up close. Designed for participants 7 and up but anyone is welcome. Waikiki Aquarium. 3 p.m. \$4–\$6. waquarium.org or 923-9741.

TUESDAYS & THURSDAYS FRESH FARMERS MARKET AT THE HYATT

Due to its overwhelming success, the Hyatt has added another day of their popular Farmers Market for visitors and locals to stock up on fresh local organic fruits, vegetables, jams, honeys, baked goods and more. Stop by twice throughout the ground floor of the Pualeilani Atrium Shops. 4–8 p.m. Waikiki.hyatt.com.

TUESDAYS, THURSDAYS & SUNDAYS TOUR AND TEA AT THE HONOLULU ACADEMY OF ARTS

Tours are led by volunteer docents and designed for visitors, who would like to explore the galleries, learn more about art and culture, and socialize over a cup of tea. Docents lead discussions in the galleries and offer insight into many cultures and time periods. 2:30–4 p.m. in selected galleries. Free with admission. Reservations required. 532-8700.

**TUESDAY – SATURDAY
HAWAIIAN MISSION HOUSES GUIDED TOURS**
Visit the Printing Office and Frame House while learning about the 19th century history and culture preserved at this beautiful museum. Galleries also open to explore on your own. Hawaiian Mission Houses. Tues. – Sat. 11 a.m. & 2:45 p.m.; Tues. – Fri. 1 p.m. \$6 – \$10. 531-0481 or missionhouses.org.

**FIRST WEDNESDAY (MARCH 1)
HIP: HOSPITALITY INDUSTRY PAU HANA**
The Hawaii Lodging & Tourism Association hospitality industry pau hana is held at SKY Waikiki the first Wednesday every month. hawaii lodging.org

**THIRD WEDNESDAY (MARCH 15)
KONA NUI NIGHTS**
Kona Nui Nights honors and highlights Hawaiian language and music, as well as the art of hula on the third Wednesday of every month with food and drinks for sale. Free. Ward Village Information Center Courtyard. 6–8 p.m. wardvillageshops.com.

**SECOND THURSDAY (MARCH 10)
COURTYARD CINEMA**
Ward Village hosts its monthly film series event, Courtyard Cinema, on the 2nd Thursday of each month. The showing features free popcorn, refreshments, food vendors and entertainment. Courtyard Cinema is free and open to the public. Seating is limited. Reserve your tickets at wardvillagecourtyardcinema.com.

**THURSDAYS
COURTYARD YOGA**
Take a complimentary yoga class with CorePower Yoga at the Ward Village Information Center Courtyard. Open to the first 50 in attendance. All experience levels welcome. 5:30–6:30 p.m. For more information visit wardvillageshops.com/yoga.

**THIRD THURSDAY (MARCH 17)
DOWNTOWN GALLERY WALK & CRAFT FAIR**
The Arts at Marks Garage continues to build on downtown activities offering execs an excuse to hang out after work and giving everyone else a reason to head downtown. Free. 521-2903. artsatmarks.com.

**FRIDAYS
CULTURAL CRAFT FAIR**
The Hyatt has had so much success with its weekly Framers Market featuring fresh local produce that they are applying the same principle to local craft items. Each week the craft fair will feature local vendors featuring arts & crafts, jewelry, Photography, woodwork and more. 3–7 p.m. waikiki.hyatt.com

**FIRST FRIDAY (MARCH 3)
DOWNTOWN GALLERY WALK & CRAFT FAIR**
Art lovers should head to downtown Honolulu the first Friday of each month. This event has exploded into a downtown party with galleries and studios open for exhibitions, artist demonstrations, and special performances. 23 galleries and art-related retail shops, restaurants and museums participate. Downtown Honolulu/ Chinatown. 6–9 p.m. Free. 521-2903 or artsatmarks.com.

**FINAL FRIDAY (MARCH 25)
ART AFTER DARK**
Art after Dark is the hippest event each month. This month explore immersive installations by local artists in Artists of Hawai'i 2017. artafterdark.org.

**SATURDAYS
KCC FARMERS MARKET**
Fresh island produce, seafood, flowers and more are available from over two-dozen vendors at Kapiolani Community College. Free. 7:30–11 a.m. 848-2074.

**SATURDAYS
PEARLRIDGE FARMERS MARKET**
Over 40 vendors offering locally grown fruits and

HILTON HAWAIIAN VILLAGE® PRESENTS

WAIKIKI STARLIGHT LUAU

SUNDAY–THURSDAY
5:30PM

WAIKIKI'S ONLY FIVE-NIGHT-A-WEEK
LUAU UNDER THE STARS

- ♦ Hawaiian and local cuisine
- ♦ Includes one welcome drink and one select beverage
- ♦ Conveniently located in Waikiki

WAIKIKI
STARLIGHT
Luau

Call (808) 941-5828
to make reservations.

MARCH CALENDAR OF EVENTS

vegetables, plants and freshly made treats. A pop-up cafe offering seating and live music round out the day. Free. 8 a.m. - noon. PearlridgeOnline.com.

SATURDAYS

KAKA'AKO FARMERS MARKET

The Kaka'ako Farmer's Market hosts an abundance of treats from around our islands. Located between Ward and Kamakee Streets, Free. 8 a.m. - 12 p.m. 388-9696 or haleiwafarmersmarket.com.

SECOND SATURDAY (MARCH 11)

DOWNTOWN GALLERY WALK & CRAFT FAIR

First Friday has become such a success that events carry over to the second Saturday. HiSAM, 11 a.m. - 4 p.m. 586-9958. Other events around downtown Honolulu all afternoon including slam poetry and open mic events at The Arts at Marks from 3-5 p.m. Free. 521-2903 or artsatmarks.com.

THIRD SATURDAY (MARCH 18)

HONOLULU NIGHT MARKET

Honolulu Night Market returns to its normal day for its art, fashion and food truck block party. honolulunightmarket.com.

SATURDAYS & SUNDAYS ART ON THE ZOO FENCE

More than 35 local artists display their works on the Zoo fence on Monsarrat Avenue opposite the Kapiolani Park Bandstand. Works for sale include original paintings, prints and photographs. 9 a.m. - 4 p.m. Free. artonthezoo.com.

SECOND SUNDAY (MARCH 12)

FREE ADMISSION TO IOLANI PALACE

On the second Sunday of each month, Iolani Palace opens its doors to kama'aina guests to visit the historic landmark for free. iolanipalace.org.

(MARCH 5 & 19)

NA MELE NO NA PUA SUNDAY SHOWCASE

Waikiki Beach Walk presents the music of Tahiti Mana on March 5th and Teresa Bright & The Hawaiian Jazz on the 19th at the Plaza Stage from 5 - 6 p.m. waikikibeachwalk.com.

THIRD SUNDAY (MARCH 19)

BANK OF HAWAII FREE SUNDAY

The Honolulu Museum of Art opens its doors to the public free of charge on the third Sunday of every month thanks to Bank of Hawaii. Plenty of activities for all ages. 11 a.m. - 5 p.m. Free. 532-8700.

MARCH 4

KATT WILLIAMS

The acclaimed comedian, rapper and actor known for his roles on Nick Cannon's "Wild 'N Out", the upcoming "Bastards" movie. HBO specials and many more returns to Hawaii for one night only. Tickets \$35- \$150. 8 p.m. Blaisdell Arena. ticketmaster.com.

MARCH 4

PAUL OAKENFOLD

Topping the list of the World's Top 100 DJ's not once, but twice and two-time Grammy and World Music Award nominee Paul Oakenfold comes to the Republik. Tickets: \$20-\$25. Doors open at 9 p.m. bampproject.com.

MARCH 4

JEWISH FILM FESTIVAL

The #1 attended film festival at the Doris Duke Theatre returns this month. The Jewish Film Festival will feature eight to ten films throughout the month of March. See what films, days and times on their website. honolulumuseum.org.

MARCH 10-12 HONOLULU FESTIVAL

Three days of cultural celebrations to celebrate the relationships between Hawaii and its neighbors in the Pacific Rim. Performances will be held at Waikiki Beach Walk, the Convention Center and Ala Moana and wrap up on Sunday with a parade and fireworks. honolulufestival.com.

MARCH 11

ALOHA DANCE CONVENTION

The biggest dance competition in Hawaii also sands as the official kick off of the EKIDEN. It started in 2015 with a mindset of having a "friendly and fun cultural exchange event of the Pacific through dance." 30 teams participate in various workshops and compete at the Hawaii Convention Center. The winners will perform during the Honolulu Festivals Grand parade.

MARCH 12

HONOLULU FESTIVAL GRAND PARADE

Kalakaua will start shutting down at 2 p.m. in preparation for the expected to have 1,000 marchers, 20 vehicles & 3 bands. Parade starts at Saratoga ad Kalakaua at 4:30 p.m. and continues through 8 p.m. Fireworks wrap u the weekend off Waikiki Beach at 8:30 p.m. honolulufestival.com

MARCH 12

ALII SUNDAY

Kawaiahao Church celebrates the birthday of selected Hawaiian Royalty who are of particular importance for the Church by holding special Sunday services in their honor. Today they honor Queen Kaahumanu. 9 - 10 a.m. 469-3000.

MARCH 17 • KIP MOORE



Country music singer Kip Moore twice nominated for best new artist and known for his song "Somethin' Bout A Truck" comes to the island for a concert at the Republik. 8 p.m. Tickets: \$39. bampproject.com.

MARCH 17

ST. PATRICKS DAY PARADE & BLOCK FESTIVAL

Don't miss the 50th annual St. Patrick's Day Parade thorough Waikiki at noon. Afterwards head downtown to Honolulu's Irish Corner on the corner of Merchant and Nu'uau. The corner parking lot opens at 11:30 a.m. with a fresh oyster bar, corned beef, fish 'n chips and plenty of adult beverages to choose from. Block party kicks off at 6 p.m. murphyshawaii.com

MARCH 17

KAMEHAMEHA SCHOOLS SONG CONTEST

The 97th annual choral music competition between Kamehameha Schools graduating classes 9-12. The contest is televised live throughout the state on KGMB as well as webcast live on the school's website for those that cannot attend. Blaisdell Arena. 7:30 p.m.

MARCH 17-18

OUTRIGGER ALOHA INVITATIONAL

Don't miss two days of some of the best college beach volleyball around as teams from Nebraska, Florida State, Utah, Arizona, and USC head to Queen's Beach to crown the King of the Beach. hawaiiathletics.com.

MARCH 18

GARETH EMERY

Electric Palms presents British EDM DJ Gareth Emery at the Republik. 18+. Doors open at 9 p.m. Tickets: \$30-\$40. bampproject.com.

Continues on page 17

Mahalo for your continued support!

JOIN OUR

GUEST REFERRAL PROGRAM



Our program is simple!

For every 25 guests referred,

Ruth's Chris Steak House will send you a \$50.00 dining certificate.

Please contact Emi Espinda if you have any questions at eespinda@drestaurants.com

OPEN DAILY FROM 4:30PM

HAPPY HOUR DAILY IN OUR LOUNGE | 4:30PM - 7PM

PRIME TIME MENU DAILY | 4:30PM - 6PM

WINE WEDNESDAYS | 25% OFF BOTTLES OF WINE



Restaurant Row | 808.599.3860

Waikiki Beach Walk | 808.440.9110

WWW.RUTHSCHRISHAWAII.COM



**SOMETHING NEW.
SOMETHING CLASSIC.**

Open Daily 11am - 10pm

Happy Hour Daily in our lounge 3pm - 6pm & 8pm - 10pm

Vino Thursdays 25% Off Bottles of Wine

**INQUIRE ABOUT OUR
GUEST REFERRAL PROGRAM!**

Our program is simple!

For every 10 complimentary dessert cards redeemed (WITH YOUR NAME ON THE CARD),

Romano's Macaroni Grill will send you a \$25.00 dining certificate that may be used at our Oahu restaurant.

Please contact Emi Espinda if you have any questions at eespinda@drestaurants.com

**ROMANO'S
Macaroni
GRILL.**

Ho'okipa Terrace at Ala Moana Center

808.356.8300

WWW.MACARONIGRILL.COM



THE MAJESTIC
WHALE WATCHING EXPERIENCE

MAJESTIC
by
Atlantis
CRUISES.

Every winter, humpback whales migrate from icy Alaska to Hawaii's warm waters to breed, calve and nurse their young. Witness this amazing event for yourself aboard Majestic by Atlantis Cruises. Seasonal lunch cruises available now through April 2, 2017.

atlantisadventures.com
For info & reservations call (808) 973-1311 or fax to (808) 973-2499

   | #atlantishawaii

Take a Walk on the *Wild Side*



The Walk on the Wild Side takes place on March 11th during DiscoverArt Second Saturday offering visitors plenty to enjoy.

Chinatown is the place to wander and adventure on Saturday, March 11th from 11 a.m. to 5 p.m. Galleries, restaurants, shops, three stages of entertainment and a heard of artists are all participating in the National Kidney Foundation Walk on the Wild Side.

Start the day of wild walking by watching the Chinese Lions as they follow the sound of master taiko drummer, Kenny Endo. He will be ready with one of his giant drums at the corner of Fort Street and King.

The day is intended to encourage walking, talking, learning and just having fun. There area scavenger hunt was added to the mix of activities. Pick up a Mystery Walk registration card at the Fort Street start point, visit every booth and turn in the completed card at the end to receive a great health education on the walk and, of course, win prizes.

Along the way, check out three music stages with live musical performances until 5 p.m., a few new stores and a dozen or more artist booths. There will also be a food trucks spread around the event. Trucks from Ethiopian Love, Girls Who Bake, Tea on Fleek, The Corn Project, The Sistah and Sweet Revenge will be on hand throughout the day.

The Plein Air Painters will be standing at their easels, here and there, looking like French Impressionists, painting Chinatown vistas. The "Art Lofters" will be right out on the street, creating – joined by the Pastel Association, a group from Hawaii Craftsmen. The ARTS at Marks Garage new performing space will be filled with, you guessed it, performers. Playbuilders of Hawaii will premier the new production, "Dragonfly". On Pauahi Street artists Imai and Gina Bacon Kerr will create on the spot along with the Honolulu Wood Turners – making art and lost of wood chips.

The Louis Pohl Gallery is offering what Sandy Pohl calls a "Make & Take" of art cards created by "you"! Sylvia Makk will also open her show of fine paintings, including what she calls "Mini Makks" – art created for small spaces and small art budgets. Topics run from water lilies to what she calls, "wild and crazy palm trees."

The Walk on the Wild Side takes place on the Second Saturday of the month, so participants can take advantage of all the action set up in and around Art at Marks Garage and all the other galleries that participate in the monthly event including live music and art demonstrations. To register for the walk and the scavenger hunt, go to team.kidney.org/event/wildside.

~ Lynn



Shop where the locals shop

at over 250 stores, restaurants, and unique boutiques, overlooking historic Pearl Harbor and featuring Oahu's only monorail.

Discover one-of-a-kind jewelry, a new look or a mani-pedi. Kids will go crazy for electronics, cool kicks, boogie boards and toys.

Visit our Saturday morning farmers' market and experience favorite local foods – shave ice, loco moco, li hing mui or malasadas!

Mon - Sat: 10am - 9pm | Sun: 10am - 6pm
Conveniently located at the corner of Pali Momi Street and Kamehameha Highway.

PEARLRIDGE CENTER
PEARLRIDGEONLINE.COM

MARCH CALENDAR OF EVENTS

Continued from page 15

MARCH 18

GREAT HAWAIIAN RUBBER DUCKIE RACE

The Ala Wai will look prettier for a while as 20,000 bright yellow rubber duckies race down the Canal to raise funds for United Cerebral Palsy Association. The top 50 duckies win prizes. Ducks race at 1:01 p.m. To adopt a duck stop by McCully Shopping Center between 9 a.m. – 12:30 p.m. or online at ucpahi.org.

MARCH 18

CIRQUE AT THE CINEMA



Enjoy this special 'musicthatPOPS' performance that pairs internationally-renown Cirque performers such as acrobats, jugglers and aerial flyers as they soar high above the heads of the orchestra while the Hawaii Symphony Orchestra performs popular film scores. 7:30 p.m. Blaisdell Concert Hall. Tickets: \$27-\$79. hawaiisymphonyorchestra.org.

MARCH 19 • WIKI WIKI ONE DAY VINTAGE COLLECTIBLES & HAWAIIANA SHOW

This all-vintage show takes place three times a year and features collectibles that are 20 years and older. Find antiques, Hawaiiana, art, estate jewelry, vintage fashion, tikis, gold & silver, koa, Niihau shell leis, lauhala hats, stamps, coins, aloha shirts, and more. Blaisdell Center Hawaii Suites. GA \$4.50. 10:30 a.m. – 4:30 p.m. Early entry at 9 a.m. for \$15. ukulele.com.

MARCH 19

BEETHOVEN & SCHUMANN

Pianist Zhang Zuo and Maestro Jun Märkl join the Hawaii Symphony Orchestra for a concert showcasing the works of Beethoven and Schumann. Tickets: \$34-\$92. 4 p.m. Blaisdell Concert Hall. hawaiisymphonyorchestra.org.

MARCH 24-26

HAWAII EUROPEAN FILM FESTIVAL

Sharing European culture through film, this annual fest has moved to a spring date this year. See some of the most internationally acclaimed films for free at Consolidated Ward Theatres during the fest. hawaiieuropeancinema.org.

MARCH 25

GREAT CHEFS FIGHT HUNGER

Join several dozen of Hawaii's top chefs at the most delectable fundraiser all year long. Nosh on delicious plates by such chefs as Chef Chai, Ed Kenney and more while enjoying plenty of beverages, live music and a silent auction. All proceeds go to the Hawaii Food Bank. Tickets: \$200. hawaii.foodbank.org.

MARCH 25

BONNIE RAITT



10x Grammy Award winner "Something to Talk About" singer Bonnie Raitt has been a force in the music industry since the 70s. Inaugurated into the Rock n Roll Hall of Fame in 2000, she returns to Honolulu for one night only. 8 p.m. Tickets: \$60-\$100. Blaisdell Concert Hall. ticketmaster.com

MARCH 25

NANI KE AO NEI MUSIC SERIES

The 2017 Mele series follows an environmental theme, featuring the elements of nature and rain through oli, hula, and song. "Songs of the Heavens," is the first performance in this years series, focuses on the upper realms by presenting mele and chants of the cosmos, clouds, and birds. it may include some of the Kumulipo, the chant of creation. 5:30- 8:30 p.m. Hawaiian Mission Houses. \$30 in advance, \$35 at the door. missionhouses.org or call 447-3926.

MARCH 26

TAKING BACK SUNDAY

This New York rockers burst onto the scene with their album Tell All Your friends in 2002 comes to the Republik. 8 p.m. Tickets: \$38. bampproject.com

MARCH 26

WAIKIKI AQUARIUM TURNS 113

To celebrate its 113th birthday, the Aquarium will host their own party with discounted admission, keiki activities and giveaways. Activities include a NOAA monk seal field camp, algae clean up, educational crafts, live music from the Iolani Jazz band and more. 9 a.m. to 2 p.m. waquarium.org.

MARCH 26 • ALII SUNDAY

Kawaiahao Church celebrates the birthday of selected Hawaiian Royalty who are of particular importance for the Church by holding special Sunday services in their honor. Today they honor Prince Jonah Kuhio Kalaniana'ole. 9 – 10 a.m. 469-3000.

MARCH 26 • ADAM SANDLER, DAVID SPADE & ROB SCHNEIDER IN CONCERT

The Saturday Night Live veterans have partnered up for the Here Comes the Funny Tour. Sandler, Spade, and Schneider are joined by Nick Swardson and while special surprise guests have been popping up on their tour around the mainland, no word yet if any of their comedy pals will join them onstage. Past surprise guests have included Tim Meadows and Norm MacDonald. Tickets: \$52-\$135. 7:30 p.m. Neal Blaisdell Arena. ticketmaster.com.

MARCH 30 & 31

BLOOD, SWEAT & TEARS

The 2017 rendition of this award-winning band features American Idol Season 4 runner up Bo Bice on vocals and Dylan Elise, the young Kiwi many consider the best drummer in the world. Two shows nightly at the Blue Note. 6:30 p.m. & 9 p.m. Blue Tickets: \$35-\$55. bluenotehawaii.com.

MARCH 31 • MR. CARMACK

The music writer/producer DJ who lives on Oahu when not touring performs at the Republik. 8 p.m. 18+. Tickets: \$25-\$35. bampproject.com.

MARCH 31

EMPTY BOWL HAWAII

Twenty of Hawaii's top chefs will participate in this annual event to celebrate Hawaii Potters Guild's 50th Anniversary by meeting an incredible goal of making 3,000+ bowls to benefit Aloha Harvest. Each bowl can be filled with a soup of choice from one of these top chefs. Tickets: \$30. 6-8:30 p.m. Pomaika'i Ballrooms, Dole Cannery. emptybowlhawaii.org.

MARCH 31

HAWAII EUROPEAN CINEMA AWARDS GALA

Traffic will slow to a crawl as the red carpet is dropped down Kalakaua for the stars to walk down as they enter in the Moana Surf rider for Oahu's black tie extravaganza. hawaiieuropeancinema.org.

Wildlife Guaranteed

See dolphins or turtles or come again free wildlife-specific cruises in Waikiki, West Oahu & Kona. Family-owned company with ocean activities for all ages.



**WAIKIKI •
WAIANAE •
KONA**

Sail • Snorkel •
Dolphins • Turtles •
Whales • Scuba •
Fireworks Dinner •
Private Charter •
Transportation

234-SAIL

(7245)

WE ANSWER 24 HOURS!

hawaiinautical.com



Hawaii Nautical

DISCOUNT HAWAII CAR RENTAL

SAVE UP TO 50%



GUARANTEED RESERVATIONS
* NO BOOKING FEES * NO
DEPOSIT * CANCEL ANYTIME
* NATIONAL RENTAL
COMPANIES

call us today @

1.800.292.1930

or check us out online:

DiscountHawaiiCarRental.com

WAIKIKI BAPTIST

Church

Your Church in Waikiki!

424 Kuamo'o St

(Near the Ambassador Hotel)

Sunday Worship Services

9:00 AM - Contemporary
10:45 AM - Traditional

(808) 955-3525

WaikikiBaptist.com

That's Entertainment

HOTELS

- HALE KOA HOTEL** 955-0555
 •**TuSat** - High and Right Comedy Show takes the stage at the Warriors Lounge at 8pm.
 •**MThFS** - Poolside music at the Barefoot Bar. 6-11pm
- HALEKULANI HOTEL** 923-2311
 •**Daily**-Hawaiian Music and hula at House Without A Key from 5:30-8pm.
 •**Daily**-Live Contemporary and light Jazz at Lewers Lounge from 8:30pm to midnite.
 •**Sun**- Sunday brunch at Orchids features Noly Paa on the piano from 9:30 - 2:30pm.
- HILTON HAWAIIAN VILLAGE** 949-4321
 •**Fri** - Fireworks at 7:45pm.
 •**Fri** - The Rockin' Hawaiian Rainbow Revue, a musical salute to King Kalakaua, at the Super Pool. 7 pm.
 •**FriSat** - Olomana at the Tapa Bar from 8-11pm.
 •**Daily** - Live entertainment at the Hau Tree Bar and the Tapa Bar from 8-11pm.
- THE KAHALA HOTEL & RESORT** 739-8888
 •**TuWThFSat**- David Swanson vocalizes on the piano at The Veranda from 7:30-10pm.Hawaiian on Sun/Mon.
- MOANA SURFRIDER** 922-3111
 •**Daily**-Hawaiian music & hula. The Banyan Court, 6-8 pm, and again from 8 -10 p.m. Weekends from 11:30- 2 p.m.
 •**MWFri**-Guided historical tours at 11am.
- NEW OTANI KAIMANA BEACH** 923-1555
 •**FSat**- Jazz guitarists in the Sunset Lanai Bar. 6-9pm.
- OUTRIGGER WAIKIKI ON THE BEACH** 923-0711
 •**Mon**- Kukui Nut Bracelet Making. 1pm.
 •**Th**- Ukulele Lessons. 1pm.
 •**Fri**- Aloha Fridays bring back old Hawai'i with music, hula, ukulele & lei making lessons. 9am-1pm.
- OUTRIGGER REEF ON THE BEACH** 923-3111
 •**Daily**- See guest artists at work in Kuloko Arts of Hawaii 9am-1pm and again from 6-9pm.
- SHERATON PRINCESS KAIULANI** 922-5811
 •**Daily**-Live Hawaiian music & halau at the lounge from 6-8:30pm, then poolside from 8:30-10:30pm.
 •**Th**-Princess Kaiulani historical tour at 9:30am.
- THE ROYAL HAWAIIAN** 923-7311
 •**TTH**- Free guided resort tour at 1pm.
- TURTLE BAY RESORT** 293-6300
 •**MTWThFSat**- Lei Making, Main Lobby at 10am.
 •**ThSun** - Fire Dancer, Hang Ten Pool Bar at Sunset
 •**TThFri** - Shell Hula Lessons, Lobby at 10am
 •**TThFri** - Ukulele Lessons, Lobby at 9am
 •**Fri**- Music & Hula. Lobby Lounge 6:30-8:30pm.

- WAIKIKI BEACH MARRIOTT RESORT** 922-6611
 •**Daily**-Hawaiian entertainment in The Moana Terrace Bar. 6:30-9:30pm.
 •**Fri**-Local crafters "Aloha Friday Fair" Lobby 9a-2pm

MUSEUMS

- HAWAII STATE ART MUSEUM** 586-0900
 •**TWThFSat** - Inaugural exhibition "Enriched by Diversity: The Art of Hawai'i." Free. Tuesday-Saturday, 10 a.m. to 4 p.m. Located in the Capital District.
- HAWAII THEATRE** 528-0506
 •**Tues**- A one-hour guided tour offers a unique insight in the history, art, architecture and restoration of the Hawai'i Theatre with trained docents & a mini-concert on the 1922 Robert Morton Theatre Organ. 11 a.m. Admission: \$10.
- HONOLULU MUSEUM OF ART** 532-8726
 •**MWF**- Japanese Language Tours. Private tours also available. 1pm. Regular admission.
- HONOLULU FIRE MUSEUM** 723-7167
 •**3rdSat**- Free one-hour guided tours through various exhibits with a firefighter recounting HFDs history the 3rd Saturday: 9am - 2pm. Reservations required. 620 South Street. honolulu.gov/hfd/communityrelations
- IOLANI PALACE** 522-0832
 •**Mon-Sat**-45 minutes docent-lead or self-guided audio tours available in English or Japanese. Japanese-led tour is available only at 11:30 a.m. All tours include re-tour video and entrance into the Palace Galleries. Adults: \$14.75-\$21.75 / Keiki (5-12): \$6. 9am-5pm
 •**Sat**-Hawaiian Quilt Classes. Old Archives 9:30a-12p.
- LUCORAL MUSEUM** 922-5381
 •**TTh**- Learn how to plan your jewelry project and more in this beaded jewelry workshop \$10. 2-4 p.m.
- HAWAIIAN MISSION HOUSES** 447-3910
 •**Tue-Sat**-Learn about the dramatic story of cultural change in 19th-century Hawai'i. Docents lead tours through the oldest existing frame house in the Islands, Printing Office, and the coral block Chamberlain House. Reservations required. www.missionhouses.org
- PACIFIC AVIATION MUSEUM** 441-1000
 •**Daily**-Vintage aircraft in battlefield hangars at Pearl Harbor. Combat flight simulators. Aviator's Tour takes you through the new Restoration Hangar. Restaurant, Museum Store. Shuttle & Tickets at USS Arizona Memorial Visitor Center or at PacificAviationMuseum.org.
- THE SPALDING HOUSE** 526-1322
 •**Daily**-Docent-led tours given daily. 1:30pm. Garden tours or Japanese language tours are by appointment.

- NAVAL AIR MUSEUM BARBERS POINT** 682-3982
 •**Mon-Fri**- A unique museum experience about aviation history in Hawaii. All of the aircraft are open to climb in, on and around. Tours: 8 a.m. - 4:30 p.m. \$7 / \$5 children under 18. BLDG 1792, Midway Road, Kalaeloa Airport. Reservations required. Sat/Sun by appt only. www.nambp.org.

SHOPPING CENTERS

- ALA MOANA CENTERSTAGE** 955-9517
 •**Tues** - PCC Polynesian Revue Show. 6pm.
 •**Sun** - Keiki Hula Show. 10-11am.
- KINGS VILLAGE** www.kings-village.com 237-6344
 •**MW** Famer's Market offering fresh produce, baked goods and local food items from 4-9pm.
 •**Daily** King's Guard Museum features a variety of collectibles and memorabilia. 10a-10:30p. FREE.
- ROYAL HAWAIIAN CENTER** 922-2299
 •**MWF**- Learn Lomilomi 11am-12pm, Bldg. B, 3rd floor
 •**MF**- Hawaiian Storytelling 12pm, *Helumoa Hale*
 •**MTWF**-Hula 10am (4pm on Wednesdays), *Royal Grove*
 •**ThSat**- Rock-a-Hula Pre-Show 7pm, *Royal Grove*
 •**WTh**- PCC Show 11am, *Royal Grove*
 •**TWTh**- Lauhala Weaving 1pm, *Bldg A., 1st floor*
 •**TThF**- Ukelele 12pm, *Helumoa Hale*
 •**TWF**- Live Hawaiian music 6-7pm, *Royal Grove*
 •**ThSat**- Rock-a-Hula Pre-Show 7pm, *Royal Grove*
 •**Sat**- Hula Kahiko 6-6:30pm, *Royal Grove*
- WAIKIKI BEACH WALK** www.waikikibeachwalk.com
 •**Tuesdays** - Ku Ha'aheo featuring Hawaiian song and dance on the Plaza stage. 4:30-6pm
 •**Wednesdays** - Yoga Classes 4-4:45pm. Free.Plaza Stage

ATTRACTIONS

- KALAKAUA AVENUE** 527-5666
 •**Fri** - Strolling Hula from 8-10:00pm.
- KAPI'OLANI BANDSTAND** 527-5666
 •**Fri**-Hawai'i's finest musicians perform. 5:30-6:30pm
 •**Sun**-Royal Hawaiian Band performs 2-3:15pm.
- KUHIO BEACH HULA SHOW** 843-8002
 •**TThSat**- City & County presents a free hula show at sunset. 6:30 - 7:30pm at the hula mound.
- TAMARIND PARK - DOWNTOWN** 527-5666
 •**Fri**- Mayor's Aloha Friday Music from 12-1pm features live music from Hawaiian to Jazz to Pop.
- WAIKIKI TOWN CENTER** 922-2724
 •**Mon-Sat**-The songs and dances of Hawai'i, New Zealand, & Tahiti. Free shows begin at 7pm.

EVENTS SUBJECT TO CHANGE PLEASE CALL TO CONFIRM PRIOR TO ATTENDING

PAPARAZZI

Polynesian Football Hall of Fame



Chris Naeole, 2016 Polynesian College Football Player of the Year Sefo Liufau and Maa Tanuvasa all flashed a shaka at their recent induction into the Polynesian Football Hall of Fame enshrinement ceremony at the Polynesian Cultural Center this past January.

Evening Extraordinaire



Chef Alan Wong partnered up with Chef Kunio Tokuoka (who has received 6 Michelin stars) of Japan's most revered Kaiseki restaurant, Kyoto Kitcho, for a two night special 10-course meal at 53 by the Sea. Both nights sold out, so hopefully they do it again.

Lance and Tim at Blue Note



Our very own Lance Rae and pals joined local musician Tim Rose (in white shirt) for his tribute show for the musical legends lost in 2016 at the Blue Note Hawai'i at the Outrigger Waikiki Beach Resort.

conciierge card

March 31, 2017

• **Bill's Sydney Waikiki** - 20% discount off food and beverage (not applicable on happy hour or other offers). Must show hotel ID to receive discount. 280 Beach Walk. 922-1500

Dole Plantation - 1 FREE Adult Admission To The Maze With Purchase of 1 Adult Admission. 621-8408

Giovanni Pastrami - 15% Off Full Bar, Dine-in or Take-Out at anytime with ID. 227 Lewers St. 923-2100.

Hard Rock Café - 15% off food, beverage (non-alcoholic), or merchandise. Hotel ID required. 280 Beachwalk Ave. 955-7383.

Hawai'i Prince Golf Club - \$5 Off Standard Kamaaina Green Fees. Tee Times: 944-4567

Hilo Hattie - 25% on Hilo Hattie labeled garments, 15% off other fashions/gifts and 10% off Hilo Hattie labeled foods. Not valid on sale item. Ala Moana Center. Ph 535-6500.

Hys Steakhouse - 25% VIP Discount Off Food And Beverage (up to 2 persons) 2440 Kuhio Ave. 922-5555

Hyatt Regency Waikiki - 15% discount with the presentation of a concierge business card at SHOR, Japengo and SWIM. 2424 Kalakaua Ave. 923-1234.

Iolani Palace - Free Admission. Regular rate \$21.75. 364 S. King Street, Reservations & Hotel ID required. 522-0832.

• **IHOP** - Receive 20% on entire bill. Must show valid hotel ID. Not valid with any other offer or discount. Valid only at Aqua Palms, 1850 Ala Moana Blvd., 949-4467 and OHANA Waikiki Malia by Outrigger®, 2211 Kuhio Ave., 921-2400.

• **Il Lupino** - 15% discount off food and beverage (not applicable on liquor or specials). Must show hotel ID or business card to receive discount. Royal Hawaiian Center. 922-3400

Kaiwa - 20% off food & beverage between 5 & 7 p.m. 924-1555

Hawaiian Mission Houses - Free tour with hotel ID. 553 S. King Street. 447-3910

• **Noi Thai** - 20% discount off food and beverage (not applicable on liquor, happy hour or specials). Must show hotel ID to receive discount. Royal Hawaiian Center, Bldg. C. Level 3. 664-4039

• **NWL Nails Wax & Lashes** - 20% discount off all services. Must show hotel ID and mention ad in magazine to receive discount. Inside the lobby of the Waikiki Grand Hotel. 922-NAIL

Pacific International Skydiving Center - 50% Discount on Jump, 68-760 Farrington Hwy., 637-7472.

P.F. Chang's Waikiki - Receive 20% on all appetizers, entrees, desserts and beverages 11 am - 5 pm daily (not valid for Pau Hana menu) Royal Hawaiian Center. Ph: 628-6760, 637-7472

Romano's Macaroni Grill - 20% Off Food and Beverage for up to 2 guests. (Not Valid for Happy Hour Menu). Ala Moana Center, 1450 Ala Moana Blvd. 356-8300

Ruth's Chris Steak House - 20% Off Food and Beverage for up to 2 guests. (Not Valid for Happy Hour & Prime Time menus). Restaurant Row, 599-3860. Waikiki Beach Walk, 440-7910.

Honolulu Museum of Art Spalding House - FREE Admission For you and one guest with hotel ID. 526-1322

The Original Glider Rides - Come experience the joy of soaring for yourself. Concierge / GSA may receive a complimentary scenic ride. Request the "GSA flight special" when booking your reservation. Hotel ID required. Dillingham Airfield. 637-0207

Tiki's Grill & Bar - FREE order of ANY appetizer with any purchase! One per table. OahuconPOKE. ASTON Waikiki Beach. 923-8454

Willoughby's Restaurant - 15% off all food items. Ohana Honolulu Airport Hotel. 3401 N. Nimitz Hwy. 836-0661.

HELP us update this card. If you know of an offer not being honored let us know. As management changes, sometimes offers can get lost.

You will be required to show Hotel ID or business card to claim offer. Do not cut this card out of the book. One special per person per business. Offers valid on regular-priced merchandise only. Discounts are available to Guest Service Professionals ONLY. Not valid with other promotions or special offers. A minimum 18% gratuity on original order required for all special food offers.

Conciierge of the Month



NAME: Crystal Nichols

HOTEL: Trump International Hotel

TITLE: Conciierge

Q. How long have you been with the Trump Int'l Hotel?
A. A little over four years now. I was originally working as a Guest Reception Agent at the Ohana Malia Hotel while finishing up my bachelor's degree in Travel Industry Management at UH and had the opportunity to work her just before I graduated.

Q. Did you start as concierge or in another position?
A. I was originally hired as a Night Auditor and steadily worked my way up to a daytime Guest Reception Agent. I always admired and had my sights set on becoming a Conciierge.

Q. What is your biggest challenge at the desk?
A. Trying to provide the right suggestions to my most discerning guests. I've learned that it takes time and patience to effectively read and anticipate our guest's needs, and sometimes my job is helping guests to understand their own desires when visiting for the first time. The best advice I've been given so far in this situation is to "keep asking questions!"

Q. What do you like most about this industry?
A. I love meeting and interacting with our guests and owners who show enthusiasm towards all that they can experience on Oahu. When I recommend activities and sights that I personally enjoy, and hear their positive feedback, it is truly rewarding!

Q. How do you deal with those "difficult" guests
A. My time as a guest reception agent has prepared me well for this. It's so important to listen to what the guests are expressing, to show care, sincerity and empathy. Sometimes these issues are resolved by simply lending an ear to allow them to vent. While I feel empowered in my ability to make decisions on how to rectify most situations, it is always nice to get a consensus from my teammates and managers.

Q. What's the one question you're asked the most?
A. "What's the best way to visit Pearl Harbor?!"

Q. Favorite perk of the job?
A. Having the opportunity to try new restaurants and activities. It helps to keep me up to date on our ever-changing industry, while ensuring I'm sharing the best to my guests. It's a match made in heaven!

Q. What off-property restaurant do you recommend most?
A. The Pig & The Lady! This restaurant offers a unique dining experience that you won't find anywhere else. Their food is an eclectic fusion of Vietnamese and island cuisine using as much local ingredients as possible. Plus, they are continuously updating their menu so there's always something new to try! It's also great the guests get to leave Waikiki and see other unique parts of Honolulu.

Q. Your guest has one day on the island. What would you recommend them to do and why
A. Renting a car to do their own Circle Island self-guided tour. Guests have much more freedom to explore Oahu this way. I recommend they start by driving along the Windward coast all the way up to the North Shore and stop by a garlic shrimp truck for lunch. After visiting the famous surf spots and the boutiques in Haleiwa, they can make their way down to the Dole Plantation to get a Dole Whip for dessert before heading back into town.

Q. Where are you from?
A. Okinawa. I came here 10 years ago with the intention of getting my bachelor's degree and moving to the mainland. However, I ended up falling in love (with a man & the island) and here I am today.

Hawaii's Most Popular

WHALE WATCH CRUISE

12.15.16 - 4.5.17

Premier Whale Watch® features:

- ★ Most whale and Hawaiian cultural activities
- ★ Keiki (child) program
- ★ Kids cruise FREE!*

Daily Packages

from \$36 adult



STAR
of Honolulu



*One child age 3-11 per paid adult is FREE on Whale Watch Cruise only packages. Inquire for details.

808-983-STAR (7827) ★ StarofHonolulu.com

The Oahu Concierge is printed monthly and direct mailed FREE to all Oahu Concierge, Hospitality & Activity Professionals.

Subscriptions available to non-industry at \$25 per year.

C O N T A C T

Davis Media

Ph: 596-4422

www.oahuconciierge.com

Twitter & Instagram: @OahuConciierge

Facebook: www.facebook.com/OahuConciierge

ADDRESS & NAME CHANGES / ADDITIONS

We do not take changes via telephone. All changes to mailing list must be submitted in writing by the 16th of the month to make the next issue, email is preferred.

S T A F F

PUBLISHER & EDITOR Pam Davis
publisher@oahuconciierge.com

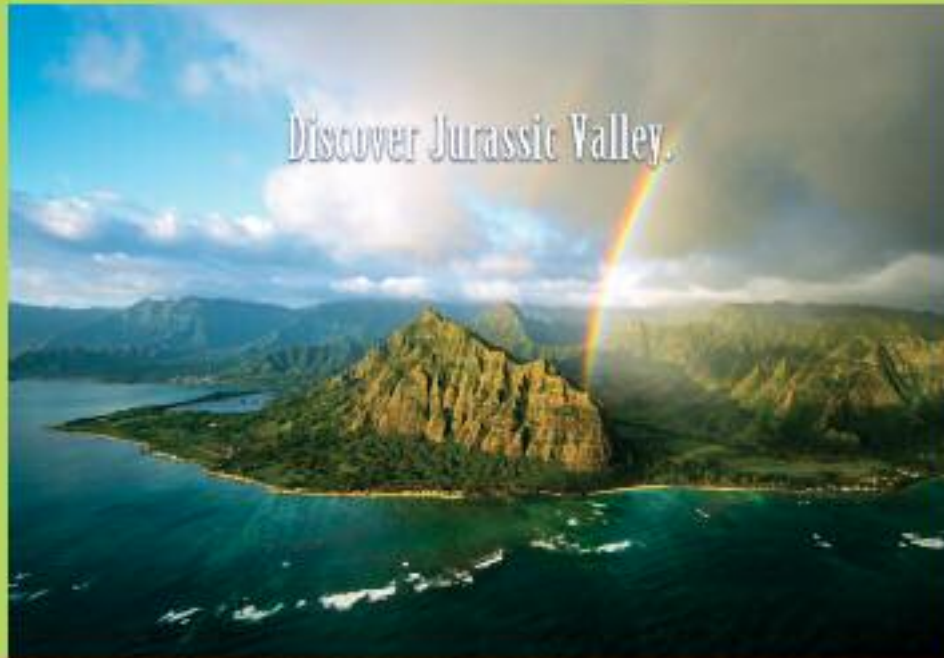
CONTRIBUTING EDITORS

Lance Rae, Lynn Cook

DESIGN

Coreiya Design

The Oahu Concierge
4348 Waialae Avenue, #185
Honolulu, Hawaii 96816



Oahu's BEST Eco Adventures
starting at \$45.95

Call 808-202-2245 or visit kualoa.com
Open daily 8:30am-5:30pm

KUALOA
WHERE LEGENDS ARE MADE

