

Concierge

KEEPING THE HOSPITALITY INDUSTRY INFORMED SINCE 1998

SURF'S UP!

Vans Triple Crown of Surfing returns



Australian Adam Melling won the \$250,000 Vans World Cup of Surfing at Sunset Beach last year. Photo credit ASP/Kirsten

The wave of excitement is building for the Vans Triple Crown of Surfing, the most prestigious series of events on the Association of Surfing Professionals (ASP) world surfing tour, staged at surfing's ultimate testing ground: The North Shore of Oahu, Hawaii. In addition to competing against the top ranked surfers in the world, competitors must also endure the challenges presented by 30 foot waves.

The series runs from November 12 through December 20 with the Reef Hawaiian Pro, Haleiwa Ali'i Beach, November 12-23 (best 4 days of surf during those dates), followed by Vans World Cup of Surfing, Sunset Beach, November 24-December 6 (best 4 days of surf during those dates), culminating with the Billabong Pipe Masters, Banzai Pipeline, December 8-20 (best 3 days of surf during those dates).

The Vans Triple Crown has been the focus of international surfing attention for more than 30 years and crowns the ASP World Champion each December. Together, these three events offer close to \$1 million in prize money, bringing many thousand of fans to the North Shore. Funds from a variety of events support local grass roots educational and non-profit organizations.

The opening and the closing events of the Triple

Crown can send a shiver down the spine of anyone who has ever faced the tricks and the threats of the waves on the North Shore. The Reef Pro is held at Haleiwa's Alii Beach Park on the west side of the boat harbor. The location is considered a real test of a professional surfer's ability to handle a multitude of conditions, all at one surf break. The surfers describe it as a "rippable peak" at two to four feet. At four to six feet it gets more difficult. Surfers look for long barrel waves. Over six foot waves can turn to walls of water, racing down the reef before closing out over the extremely shallow Toilet Bowl section that has been the cause of critical end-of-wave rides and broken boards.

The Billabong Pipe Masters is called the quintessential event in professional surfing, the Holy Grail of waves by which all others are measured. And one of the longest running events in professional surfing. The Banzai Pipeline is often referred to as the best wave on the planet. With its top-to-bottom barrels and its closeness to shore it is a surf spectators and photographers dream come true.

The fair-haired boy of Hawaii's surfing world, champion John John Florence, was raised on this wave. He says he has surfed the wave in nearly

Continues on page 2.

Cruising the North Shore

Simply say "North Shore" to a visitor and their eyes go as glassy as Waimea Bay on a flat day. Haleiwa is a place of legend, the ultimate escape from the world, a place where you believe you could live forever – or until your savings ran out and you had to go back to a real-world job. It is a place without high-rise condos or intersections where it takes half a lunch hour to make a left turn. The pace is slower on the North Shore, even though the traffic can be too -- a side effect of its laid back beauty being one of the biggest tourist draws on Oahu.

To spend a day on the North Shore you should drive to a different drummer. I suggest popping in some Willie K, a bit of Keola Beamer and some Henry Kapono sounds to push the "stress release" button as you head off. Leave early, make no plans. Go with the flow. First purchase a *Keep the Country, Country* bumper sticker to slap on the bumper. If you're driving a rental, tuck it in the side window. It won't get you any discounts but you may get a shaka sign here and there and a wave to merge into traffic.

As you roll into Haleiwa, play a game of "I Spy" with yourself, or anyone who happens to be riding in your car. Who will be the first to spot one of the 900 Haleiwa murals painted by the artist, the late Ron Artis? His shop, **Art..Is**, jammed with his paintings, is also home to the Artis Family Band, made up of his kids, Ronnie, Stephanie, Victor, Atevon, PraiseJesus, Spirit, Thunderstorm, Martis, Kailua, America and Artis. Catch one of their shows. The band is hot.

Because the Starbucks take out gave out halfway to Haleiwa, the day may have to restart with a breakfast acai bowl under the palm thatched awning at **Haleiwa Bowls**. Fresh, fruity, crunchy,

Continues on page 8.

TABLE OF CONTENTS

Yada Yada Yada	2
Newsflash	3
Arts with Aloha	4
Auntie Lynn's Adventures	6
Hawaii's Modern Masters	7
Chef's Corner: Signature's Chef Ken MacKenzie	9
E Pili Kakou	10-13
Calendar	14-15, 17
Hiker's Corner	16
That's Entertainment	18
Activity Concierge of the Month: Ingrid Noda	19

WOLFGANG'S STEAKHOUSE

LUNCH • HAPPY HOUR • DINNER • WEEKEND BRUNCH • PRIVATE ROOMS

UNMISTEAKABLY NEW YORK

Royal Hawaiian Center, Bldg C, Level 3

wolfgangsteakhouse.net • opentable.com

808.922.3600



The Holidays Have Arrived

Surf's up on the North Shore, Brookstone's are popping up in Kahala Mall, and Macy's has their Christmas department up – ok fine, that one actually went up shortly after Labor Day which doesn't count, but all the rest of it means one thing – the holidays are here. Ala Moana should start putting up Mr. & Mrs. Claus in the next week or so and Santa moves in for the keiki's daily picture ops the same day they hold their first Christmas tree lighting ceremony on November 16th, so prepare for the madness!

In the meantime, if it's holiday season in the islands, it also means it's big surf time, and the Van's Triple Crown will be bringing big name and hopefully some big surf to the North Shore. Not like anyone needs another reason to head over to the other side, but it certainly adds some incentive on certain days. Contributing editor Lynn Cook has put together her thoughts on some places to stop by when you head out to check the surf and make a day of it. One of the things I always recommend is for people to stop by Laniakea Beach to see the turtles. Hardly a secret as the state reckons nearly 600,000 people a year stop by that little strip of sand each year, but it's easy to miss. Everyone just pulls into the indented 'parking lot' across the street and then jaywalks across Kam Highway to get to the beach which is dangerous and often adds to those infamous North Shore traffic jams. Pay attention to the news in the next few weeks, as the State Department of Transportation is debating putting up a 1,200-foot long barrier to block that lot, thereby preventing people from parking there. They believe that might be a short-term solution to help improve the traffic through the neighborhood. Now we all know that on big surf days, nothing really helps that traffic jam, and this in fact could make it a bit worse as people would probably just pull over to the side of the road (what little there is of it) and block part of it in order to go take their pictures, or they could start jaywalking elsewhere to get over there. At least now all the drivers are aware that, legal or not, that is a pedestrian crossing zone and are more attentive through that stretch than others. In any case, state representatives have been quoted that these barriers will go up on a trial basis before the end of the year. So try to keep your eyes open for when it happens so you can best direct your guests on how to still stop there safely.

Speaking of safety, make sure you talk to them about how dangerous the shore break can be out there when the surf is up. Not everyone can handle the punishing shore break like photographer Clark Little (we're showing one of his pics in the article on page 8), who regularly gets pounded to get those amazing pictures, and that it could seriously injure them, or worse yet, drag a child out to sea. They need to respect the raw power of the ocean and keep a close eye on their kids when they're out there. Let's make sure we do our part to ensure everyone's beautiful Hawaiian day stays happy and incident free.

Aside from those warnings, everything else is looking bright, sunny as the holiday season begins to unfold. Get out there, enjoy and we'll see you around in the near future. Aloha!



Yada Yada



Bill Comstock

Bill Comstock has been named general manager of the *Ala Moana Hotel*. He has been the general manager of the Outrigger Reef on the Beach since 2006, successfully leading them through their renovations and re-launch. Previously he managed the Pacific Beach Hotel and the Outrigger Canoe Club. • Taking over his duties at the *Outrigger Reef Hotel* is **Dean Nakasone**. Dean has been with the Outrigger family for many years and most recently oversaw the successful renovation of the OHANA Waikiki Beachcomber Hotel and then its subsequent transition to a Holiday Inn. • *Navatek* has announced the appointment of **Samira Klicic** as general manager. In her new role she will be responsible for running the cruise operations and ensuring the guests receive the best possible dining and entertainment experi-

ence while they are onboard. Most recently she was managing the Cold Stone Creamery on Kalakaua. • **Ron Hee** has left go! airlines and is taking his over 25 years of marketing experience with him to *Hilo Hattie* as their new vice president of sales and marketing. Previously he has worked with Starwood Hotels, Bishop Museum and Sea Life Park. He will be focusing on re-establishing 'The Store of Hawaii' brand to both the visitor and local markets. • Congratulations to **Barrett Winning** who has accepted a new position as Resort Manager at the *Ilikai Waikiki Marina Resort*. Most recently he was Director of Operations at the Courtyard by Marriott Waikiki Beach. • **Paul Dun** has also made a move, from the White Sands Hotel to the *Pagoda Hotel* to take over hotel manager duties. • Last, but certainly not least, **Jackie Minami** has joined the Guest Services team at *Hotel Renew*. She was most recently the Front Office Manager at the Shoreline Hotel Waikiki. Congratulations to you all.

Van's Triple Crown

Continued from page 1.

every condition, "from half a foot to as big as it gets, and you can never trust it, never get too comfortable out there, it's a heavy, heavy wave." The Pipe has claimed more lives than any wave in the world, inflicts injuries and breaks boards for a hobby.

Since most folks can't all take off for a month and a half and hang at the North Shore to watch for the right waves, fans can log into their website each morning to find out if the event is on that day.

All of the events are webcast live on days of competition making it easy to get the action from anywhere in the world with an internet connection. triplecrownofsurfing.com. On event days the competition runs from 8 a.m. to 4 p.m. There are no tickets and no paid seating. Just hit the beach and prepare for some action!

A Few Hints to Make it Easy

Use sunscreen, gallons of it, not just in the sun. U.V. rays are strongest on overcast days. Bring plenty of water. Wear sunglasses. Double all this for kids.

Binoculars will add to the experience. Bring your camera. Bring a beach chair, towel or mat to sit on. A sandy bottom gets old real quick. Bring a jacket or a hoodie. Remember, it's winter here.

Go early to score a good parking spot and (try) to avoid traffic. Pay attention to road signs, warnings and driveways to avoid tickets and towing. Show aloha, say hi and wave thanks on the road or the beach. Don't stop on the highway to grab a look. You will be ticketed. Don't leave valuables in your car.

Pick up your own or any other trash on the beach. Be polite to the local residents. You are a guest in their front yard. Heed lifeguard warnings. During the winter months, waves can double in size within an hour. Watch all kids, yours and others. Sitting too close to the waters edge may not only soak you and all your belongings but can pull a child into the surf in an instant.

Don't smoke on the beach or leave butts in the sand. Don't block other spectators view with a big



Surfing fans at Haleiwa's Ali'i Beach last year. Photo credit ASP/Cestari

beach umbrella that will be dangerous in the wind. Don't bring pets.

Wait until the end of a heat to rush your surf heros for an autograph. Don't use noise making devices. Contest officials use these tools to alert competitors to important contest information.

Reef Clash of the Legends

This year the Reef Clash of the Legends, running in conjunction with the signature events, has added an all new spin. Reef will select nine legendary global surfers based on competitive, free surf and Hawaiian water accolades. Last month, fans were able to go to their website and vote for their favorite legends. The popular vote will decide which Legends will compete. The winners of the public vote was announced on October 28th. Log onto reef.com to see who was selected.

"Surfing runs through our veins here at Reef and we couldn't decide which legends to choose for the specialty event," says PJ Connell, Reef's marketing director, "so we thought, 'why not let the public vote for their favorite legends?' We can't wait to see the outcome."

Because of his current status as Clash of the Legends champ, Sunny Garcia has been granted an automatic entry into the 2013 event. Raised on Oahu's West Side, Garcia came on the scene in 1986 with a win over Tom Carroll at the Gotcha Pro at Sandy Beach. Garcia won six Triple Crown titles and the ASP World Title in 2000. Over 40, he continues to be a force each season. Surf junkie or newbie who has never watched a pro surfer shred a wave, the Van's Triple Crown of Surfing is the place to be on Oahu's North Shore. ~ Lynn Cook

EXTRA Newsflash EXTRA

CELEBRATE THE ROYALS

Na Lani 'Eha is the "Fab Four" Hawaiian style, honoring King David Kalakaua, Queen Lili'uokalani, Princess Likelike and Prince William. Sunday, November 10th at McKinley High School Auditorium, 2:30 p.m., Kumu Hula Leina'ala Kalama Heine and her dancers from Na Pualei O Likolehua, host the 17th Annual Na Lani 'Eha, honoring the "Heavenly Four" composers, singers, chanters, poets and musicians. Four halau, two male, two with women, complete the list. Each kumu selects a mele, a chant and a hula or creates something new, to honor 'their' royal. Kumu Snowbird Bento, Kumu Ka'ilihiwa Vaughn-Darval, Kumu Kaleo Trinidad, perform plus Na Hoku Hanohano winners Na Hoa. 2:30 p.m., free parking, \$25 tickets, napualei76@gmail.com.

BEST BUDDIES

Hang with your 'bestie' at the Second Annual Best Buddies Friendship Jam. Marueen McCormick, star of The Brady Bunch, will host a lineup of talent that includes Jimmy Borges, Melveen Leed, Jordan Segundo, Starr Kalahiki, Taimane and more. The \$50 ticket for the November 16th event at Jimmy Buffet's at the Waikiki Beachcomber benefits programs at isle schools to assist intellectually and developmentally challenged youth. Created by the Kennedy/Shriver family, the organization supports peer mentoring. bestbuddieshawaii.com.

MARINE'S GET IN FREE AT PEARL HARBOR

To honor the birthday of the U.S. Marine Corps on November 10th, Pearl Harbor Historic Sites will waive the admission of all active duty and retired Marine personnel and their families into the Battleship Missouri Memorial, Pacific Aviation Museum Pearl Harbor, and the USS Bowfin Submarine Museum and Park on November 9th and 10th. Present a valid military ID at the ticket booth to redeem. PearlHarborHistoricSites.org.

TUESDAY FIREWORKS AXED

The Hilton Hawaiian Village has decided to cancel the recently added Tuesday night fireworks show. Be sure to raise your eyes to the sky on November 5th to catch the final Tuesday night performance. The longstanding tradition of Friday night fireworks will continue on uninterrupted. 949-4321 or hiltonhawaiianvillage.com.

THE BAND PLAYS ON

The Royal Hawaiian Band, led by Clarke Kekūhaupi'o Bright, will resume performances at the newly-reopened Royal Grove in the Royal Hawaiian Center. The recent Royal Grove renovations include a newly-constructed stage and ample open space for visitors to enjoy the show. Free concerts are being held the first and third Thursdays of each month, from 1:00 p.m. to 1:45 p.m. royalthawaiiancenter.com.

ROYAL WELCOMES MORE

Royal Hawaiian Center will welcome two tasty new additions when Island Olive Oil opens on November 6th, followed by Pho Factory Cafe during the Thanksgiving week. This location will be the second for Island Olive Oil, whose gourmet and ultra premium olive oils have garnered the locally-owned business a loyal customer base. Also opening is Pho Factory, which will continue its tradition of serving healthy Vietnamese cuisine when it opens up its second location in the Royal Hawaiian Center's Pa'ina Lanai Food Court. And if that's not enough, the owners of Pho Factory will also be launching Curry Cafe, a brand new eatery that specializes in three types of curries: Japanese golden, Vietnamese coconut milk, and Japanese Hayashi Rice stew. royalthawaiiancenter.com

SHIROKIYA FREE SUNDAYS

Shirokiya has launched Ohana Sundays, a bi-monthly family-friendly free event through the end of the year. The afternoons will include a series of events and prizes catered around that day's particular theme. On November 10, Ohana Sunday will feature the Shichi-Go-San Festival and host a series of events specific to the Festival, while on November 24th they will celebrate radio station KZOO 50th anniversary. Events will be held from 1 - 4 p.m. Call 973-9111 or shirokiya.com.

HONUS FIND A NEW HOME

The Waikiki Aquarium has become home for six turtle hatchlings born recently at Sea Life Park. This special exhibit and conservation program will give the baby turtles a safe place to grow up protected from predators and disease until they are large enough to be released into the ocean in a year's time. The 1,000-gallon exhibit will provide Aquarium and UH marine biologists numerous research opportunities and a rare chance for residents and visitors to view honu at such a young age. Call 923-9741 or waikikiaquarium.org.

KULU KULU TIMES TWO

Kulu Kulu Honolulu has opened its second pastry shop at Eaton Square Shopping Center. Specializing in Japanese-style quality cakes, they will continue to serve their famous strawberry roll cakes made daily, cheesecake and their original "Diamond Head puff" as well as cakes made of mango, Okinawan sweet potato and seasonal fruits and flavors. Open daily from 8:30 a.m. - 7 p.m. 753-0843 or kulukulukcakes.com.

RESTAURANT WEEK HAWAII

Be sure to dine out November 18-24 to take advantage of special menus and discounts. Check restaurantweekhawaii.com for a list of participants.

**Thanksgiving Dinner Cruise
November 28, 2013**

Sunset Dinner Menu

- Prime Rib
- Roasted Turkey with Stuffing & Gravy
- Cranberry Sauce
- Garlic Mashed Potatoes
- Steamed Vegetables & Green Salad
- Steamed White Rice
- Fresh Catch of the Day
- Kalua Pork
- Pumpkin Cheesecake
- Fresh Fruit

No change to Royal Sunset Dinner

Atlantis NAVATEK Cruises

Call (808) 973-1311 for information & reservations or fax to (808) 973-2499.

GIVE YOUR
V.I.P. GUESTS
AN EXPERIENCE
THEY'LL NEVER
FORGET.



THE KUALOA
**ROYAL
EXPERIENCE**



• PERSONAL GUIDED TOUR •



• AIR CONDITIONED
LUXURY MOTOR COACH
TO VIP LOCATIONS •

• GOURMET PICNIC LUNCH •

KUALOA

TRULY HAWAII

CALL 1-808-237-7321

WWW.KUALOA.COM

arts with aloha



The arts and cultural scene in Honolulu this November is all about "THE THEATAH" and what better place for your guests to begin their theatrical experience in Hawai'i than at the historic **HAWAII THEATRE** in downtown Honolulu. This extraordinary theatre opened in 1922 as a showplace for vaudeville, silent films, plays, musicals and Hawaiian entertainment. The theatre was recently featured in the trailer for last month's Hawai'i International Film Festival and hosted several films during the festival one of which was a screening of the 1964 musical *The Umbrellas of Cherbourg* (Les Parapluies de Cherbourg for those of you concierge who speak French) starring Catherine Deneuve. For many years the Hawai'i Theatre was known as the Pride of the Pacific and it slowly evolved into a plush movie palace until it fell on hard times in the 1970s when Waikiki became the entertainment destination for locals and tourists alike. Today the theatre is listed on both the State of Hawaii and National Historic Registers and today hosts approximately 100,000 patrons annually showcasing the finest in local, national, and international entertainments. For those of your guests who are interested in both theatre and architecture, you should recommend the one-hour docent-led tour which features not only the history of the structure but also the artwork inside it and its importance to the community. The tours are subject to change/cancellation due to rehearsal & performance schedule, so it is always best to call 528-0506 to confirm tour date and time.



Below are some highlights of what your guests can experience at the Hawai'i Theatre this month: **THE MIKADO** (Wednesday, November 6 at 7 p.m.) This production of Gilbert & Sullivan's comic operetta is presented jointly by the Hawai'i Theatre and the education department of Hawai'i Opera Theatre. For those of you not familiar with the operetta, it is Gilbert & Sullivan's lampoon of the 19th Century English fascination with the Orient. Their story is set in the fictional Japanese town of Titipu, with character names like Nanki-Poo, Pitti-Sing, Peep-Bo and Yum-Yum. The plot is as playful as the music that carries it along, and families will love the comic misadventures that result from disguise and mistaken identities. You should suggest that your guests visit **IOLANI PALACE** prior to seeing this production and ask the docents to point out the Japanese influences in the textiles and furnishings to further prove the 19th Century's love for all things Japanese.

RECALLING HAWAII (Saturday, November 9 at 7 p.m.) The Ka`imi Na`auao `O Hawai'i Nei Institute presents a beautiful theatrical experience of hula which chronicles the past, present and future of Hawai'i through imagery, music and

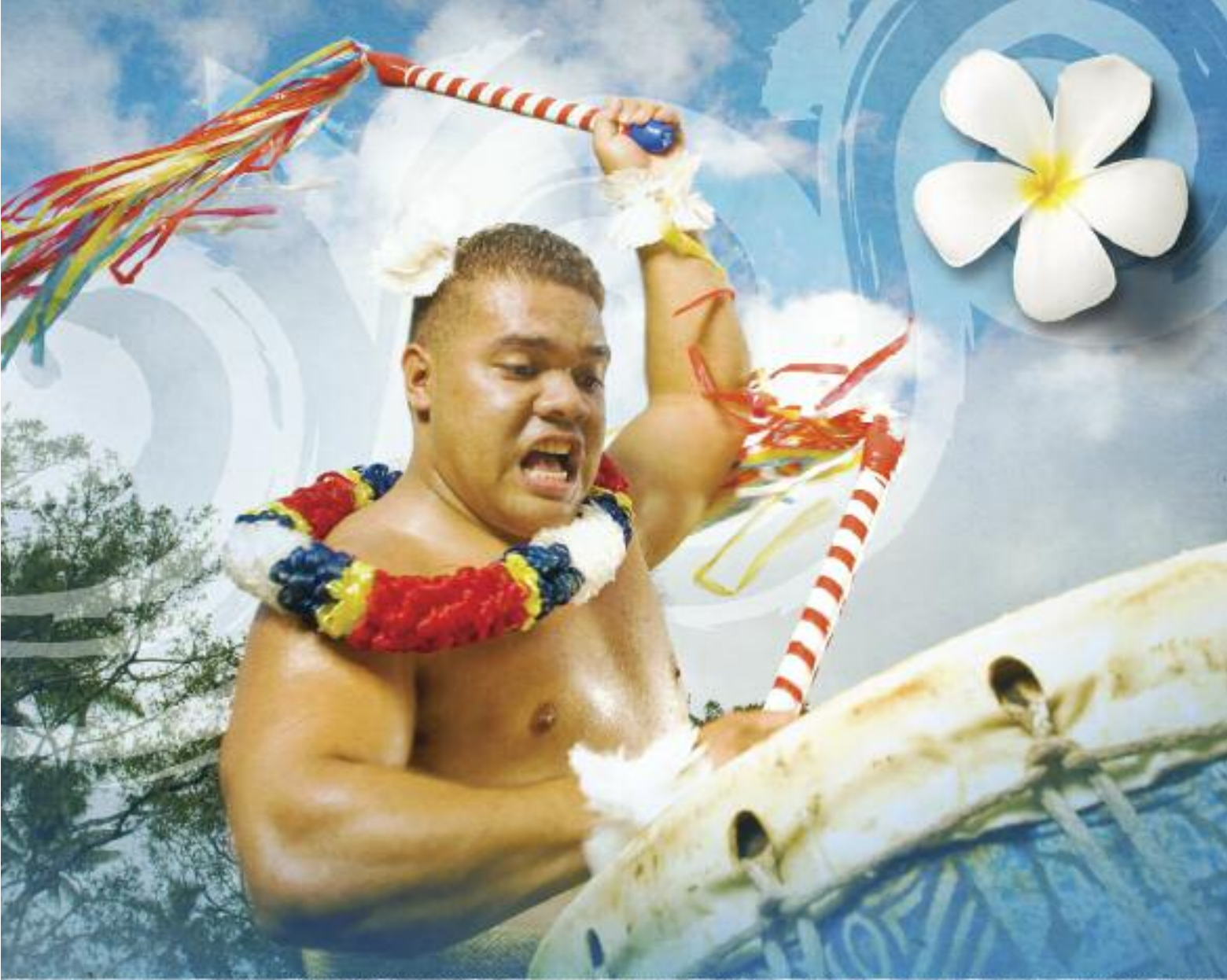
dance. Visionary Roselle (Keli'ihonipua Lindsey) Bailey directs the diverse cast of 60 performers of all ages, including dancers, chanters, musicians and actors. Eight halau of Maui, Kaua'i, O'ahu, California, Germany and Switzerland are uniquely woven together to bring this extravaganza to O'ahu Island. The show is the director's personal interpretation of Hawai'i's history from the time of creation, or Kumulipo – through all the historical highlights that have made Hawai'i what it is today. It mixes traditional and contemporary Hawaiian music and hula, complemented by projected images in the background. Tickets are \$22.

SPANISH BRASS (Sunday, November 17 at 2 p.m.) This brass quintet is one of world's foremost brass quintets. Since winning the First Prize in the 6th "Ville de Narbonne" (France) International Competition for Brass Quintets in 1996, considered the world's most prestigious event of its type, they have performed worldwide and are recognized as one of the most dynamic and established brass ensembles on the international scene. Their many US tours have made them a favorite of American audiences. The ensemble is also known as Spanish Brass Luur Metalls. The Luur was a Bronze Age Scandinavian instrument, the ancestor of modern brass instruments. Metalls means "brass" in the Valencian language of their home region of Spain. Tickets are \$35.

To find out more about what's happening at the Hawai'i Theatre Center and how to get tickets to the above shows visit HawaiiTheatre.com or call the box office at 528-0506.

From the world's most foremost brass quintet, I now take you to Honolulu's foremost off-Broadway theatrical experience **MANOA VALLEY THEATRE** and its production of Ronald Harwood's wickedly funny play *Quartet* opening November 14th about four retired opera singers trying to perform together one last time before their lose their 'high notes." As you can imagine egos and tantrums get in the way, and old issues come to the surface and secrets get revealed all of which create a fun evening of laughter. Some of your guests may recall that this play was released as a major motion picture in actor Dustin Hoffman's film directorial debut. Call 988-6131 to make reservations.

The interaction of opera singers most likely is equal to the drama found in family relationships just without the vibrato. And that is exactly what your guests will find in **KUMU KAHUA THEATRE'S** production of prolific Hawai'i playwright Lee Cataluna's *Flowers of Hawai'i* which runs from November 7th to December 8th. The play is a compilation of ten vignettes that capture the essence of family relationships which means lots of confrontations and drama for example one playlet features an elderly woman's children and grandchildren as they claim her possessions while she's still alive, sticking name tags under her belongings. Another short has a young mother trying to palm off the responsibilities of raising her child onto her mother. Even though the characters in these shorts reflect the many cultures of Hawai'i, your guest will easily find someone or some situation that resonates in their heart. Tickets can be purchased with a credit card by calling 536-4441 or visiting KumuKahua.org. ~ Lance Rae



We've made a great team these past 50 years.
Mahalo for your support.

During our 50 years in Hawaii, you've helped us become the state's #1 paid visitor attraction. And we look forward to working with you in the future. Tell your guests about our "Go Native" activities; our spectacular evening show, "HĀ: Breath of Life"; and "Hawaiian Journey," our new cinematic experience. For more details, see your PCC representative.

Celebrating
Fifty Years
50
Polynesian
CULTURAL CENTER
polynesia.com



Mahalo for your continued support!

JOIN OUR GUEST REFERRAL PROGRAM



OUR PROGRAM IS SIMPLE! FOR EVERY 25 GUESTS THAT YOU REFER, RUTH'S CHRIS STEAK HOUSE WILL SEND YOU A \$50.00 DINING CERTIFICATE

Please contact Emi Espinda if you have any questions.

(808) 595.2205 • eespinda@direstaurants.com

OPEN DAILY FROM 5PM
HAPPY HOUR DAILY IN OUR LOUNGE
5PM - 7PM
PRIME TIME MENU DAILY 5PM - 7PM
WINE WEDNESDAYS
25% OFF BOTTLES OF WINE

Restaurant Row | 808.599.3860
Waikiki Beach Walk | 808.440.7910

WWW.RUTHSCHRISHAWAII.COM



25 NEW MENU ITEMS

Open Daily 11am - 10pm

Happy Hour Daily in our lounge 3pm - 6pm

Vino Thursdays 25% Off Bottles of Wine

Inquire about our Guest Referral Program!

Our program is simple! For every 10 complimentary dessert cards redeemed (WITH YOUR NAME ON THE CARD),

Romano's Macaroni Grill will send you a \$25.00 dining certificate that may be used at our Oahu restaurant.

Please contact Emi Espinda for information.
(808) 595.2205 • eespinda@direstaurants.com

ROMANO'S Macaroni GRILL

Ho'okipa Terrace at Ala Moana Center
808.356.8300

www.macaronigrill.com



Auntie Lynn's Adventures



Somehow it seems I misplaced summer. There must have been a June-July-August mishap with my calendar pages. And then September and October just vanished. Here we are, racing toward Turkey Day.

Which, by the way, seems more about getting a run on shopping. According to news reports Macy's will be open even during their big Thanksgiving Day Parade down 5th Avenue in New York.

Anticipation is what this season should be called. Holiday is a misnomer since most of you in the visitor industry work one, if not all, the holidays. Trust me, newspapers and magazine writers work too. Thankfully, lots of lovely, fully equipped turkey dinners are available for take-out, from fine to fast dining.

TUCKER BAGS - Time to start checking out favorite gift and craft shows. On Sunday, November 10th a cast of well-known Hawaii artisans will fill the Pegge Hopper Gallery with their annual Holiday Artist Sale, with work for sale, not artists. The list includes Lynda Sakraida's Hadji Baba Bags, called original bags for original women, jewelry by Cora Yee, ceramics by Suzanne Wolfe and Daven Hee, metal work by Gene Pijanowski and mixed media from Kirsten Simonson. Parking is free on the streets and the Chinatown markets are open and ripe for shopping.

Top of the month, the 5 p.m. to 9 p.m., November 1st and December 6th catch the First Friday art openings and wearable art and accessory gift show at the Louis Pohl Gallery in Chinatown. Through December the art by Bob & Charlie is guaranteed to stimulate conversation - that's Bob Freitas' sculptures and Charlie Dickson paintings.

TAKING IT TO THE HOOD - On November 9th there will be a day of fun in the sun (and shade) at the Kaka'ako Waterfront Park. The PAI Foundation, the folks who bring us the great MAMo Wearable Art Show and Maoli Arts Month each spring, are presenting their first annual PAI Kaka'ako Arts Fest. Food, art, painting, an all day konane tournament (think Hawaiian Chinese Checkers), kids games, lomilomi massages, traditional Hawaiian la'au lapa'au medicine, artisans, hula and top entertainers. The leader of this parade is Kumu Vicky Holt Takamine. Parking is free. Food booths and food trucks will serve up affordable plate lunch, Hawaiian style.

TAKE TEA - Lucky if you have a Nake'u Awai dress, shirt or romper in your closet. It will almost never wear out or go out of style. Nice thing about this local designer is that any age, any size, any time, his duds look good. Always expect the un-

expected from Nake'u. Now he is inviting you to Tea & Talk, talk story that is. Sunday morning, from 10:30 to 11:30, at Na Mea Hawaii at Ward Warehouse, he is serving scones and tea and inviting a pal in to talk. November 17th Mihana Souza, singer, musician, composer and member of Puamana of the Aluli-Farden ohana will talk and maybe more. She rarely is seen without a guitar in her hands. On November 24th he has invited Maxeen Shea, from the Hawaiian Civic Clubs and City & County of Honolulu Parks & Recreation. Of course the store is packed with gift options, from small-kine stuffs to books to Ni'hau Shell lei. Shop and they gift wrap while you take tea.

THE SHIRT - If you got 'em, wear 'em, to the November 20th celebration of the Reyn Spooner shirt. Since 1983 the classic Hawaii men's uniform, the shirt by Reyn Spooner has created a Christmas shirt. Betcha there are a few folks who have them all and they still fit. Just in case, for the 30th anniversary, Reyn's has combined thirty years of designs into a patchwork design, each separated with a maile lei border. Printed on the classic Spooner Kloth, the shirt is available at their Sheraton Waikiki store and other Reyn's locations. The November pupu's, cocktails and silent auction event at Neiman Marcus' Mariposa restaurant is a benefit for Make-A-Wish Hawaii. Guests can play, "I've got that one" as they I.D. the designs. Henry Kaponu, Herb Ohta Jr. and Keoki Kahumoku will entertain. Comedian Lanai Tabura and TV host Olena Heu will emcee. 100% of the ticket sales will go to Make A Wish and 100% of the satisfaction goes to you (if the shirt still fits). reynspooner.com/hawaichristmas30th.

TRADITIONAL HULA - Each Saturday, at 6 p.m., the newly renovated and re-opened Helumoa at Royal Hawaiian Center offers an opportunity to watch hula kahiko, traditional hula, by some of Hawaii's finest, award-winning hula halau. In November the kahiko will be presented by Kumu Mapuana de Silva and the dancers of Halau Mohala 'Ilima, overall winners of the women's hula at the 2013 Merrie Monarch Festival. The presentation is free, and a rare opportunity to see the most ancient form of hula danced today.

TASTE TREAT - Back to that anticipation season. Starting December 1st the Kahala Hotel will be baking up their famous Kahala Christmas Stollen. It's a gift to give yourself. Pre-ordering, we call it a "stolen drive-by" pick up. Simply thinking of the fragrance of fresh-baked loaf can add a pound to the scale. Of course anyone within sniffing distance will follow you around like a puppy dog, waiting for a crumb. See you there!



ALERT!

October 26-28
Box Jellyfish Window

Teaching Hawaii about jellyfish and other ocean creatures for over a century

brought to you by
The Waikiki Aquarium
open daily from 9 am - 4:30 pm



Hawaii's Modern Masters

Once again, Luxury Row at 2100 Kalakaua Avenue has partnered with Cedar Street Galleries to present the finest in art and fashion at the 8th annual Celebration of the Arts that they call Hawaii's Modern Masters. Shoppers will be able to appreciate select works by award-winning local artists that will be on display in participating stores all month long.



This image entitled "Ohi'a Stump, Grasses & Steam" is one of several Franco Salmoiraghi photographs you can find on display at Chanel.

Step inside Chanel to see oil paintings by Hamilton Kobayashi on display. Hamilton is known for painting the natural beauty of Hawaii, intimately capturing ever-changing patterns and energy of Hawaii's ocean and landscape. The photography of artist Franco Salmoiraghi, who has focused his camera on the beauty around our islands for years will also be featured.



"Dice Ship" is part of Doug Britt's Found Objects collection on display at Hugo Boss

Over at Hugo Boss, artist Doug Britt will have parts of his Found Objects collection on display. Known for painting in the middle of the

ocean, his paintings and found-object sculptures portray a bird's-eye view of his island home. Recurrent in Britt's work are transport vessels, such as canoes, boats, barges and planes, which have shaped Hawaii's history and serve as a web of continual international connection. Several of those will be on display throughout this event.

Walk over to Coach to see brightly colored acrylic paintings by Sandra Blazel and ceramic pieces created by artists Amber Aguirre, Keiko Hatano, Lynn Liverton and Esther Shimazu.

If you like glass work, be sure to wander into Tod's as they display the works of husband and wife team, Hugh Jenkins and Stephanie Ross. These two left the teaching world in Honolulu to collaborate in their home-based studio in Honoka'a. Blowing glass since 1999 their work reflects the ever-changing water, volcano, forest, landscape and climate of the Big Island. They are proud to be considered a nationally leading studio in the use of renewable energy, with reclaimed cooking oil as their main fuel for melting glass.



Items such as "Kipuka Fire" by Hugh Jenkins and Stephanie Ross will be on display at Tod's.

Glass art will also be on display in Gucci as they display the works of another family team, Bill Worcester and Sally Worcester who are known for creating Hawaiian gourds out of glass as well as the works of Tonia Moreno. Tonia has won numerous awards and scholarships and her glass blowing technique consists of repeating multiples of a single

form that eventually becomes a unified whole. Gucci will also be displaying bronze and stainless steel works by Daniel Stratis and wood creations by Lonny Tomono.

Cedar Street Galleries is proud to partner on this event each year featuring some of the 350 local artists they have. They are more than 3,500 works contemporary and historical works online. Log onto cedarstreetgalleries.com to see for yourself and be sure to stop by Luxury Row located at 2100 Kalakaua Avenue between November 7 to December 1st from 10 a.m. to 10 p.m. while the exhibit is on view to the public.

Your family flies free.

**1 YEAR FREE FAMILY & FRIENDS PASS.
FOR CONCIERGES ONLY. OFFER ENDS 11/30/2013.**

Prepare yourself for when the relatives come to town. Get 1 year free admission for 2 adults, up to 4 children, plus 4 guest passes to what TripAdvisor® calls "One of America's Top 10 Aviation Attractions."

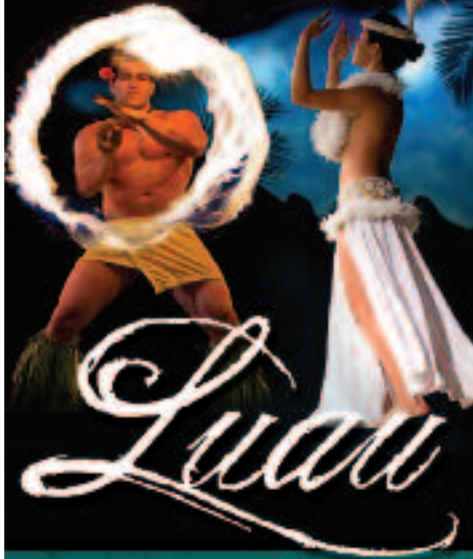
To get your Free Family & Friends pass, contact Neil at 441-1009 or neil@PacificAviationMuseum.org



www.PacificAviationMuseum.org
Open 9am to 5pm daily.



HILTON HAWAIIAN VILLAGE® PRESENTS
WAIKIKI'S ONLY LUAU
 UNDER THE STARS



THE DRAMA & GRACE OF POLYNESIA

unfold with live music, drums, the captivating dances of the South Pacific and the fiery drama of four fire knife dancers. Indulge in a feast of unforgettable tropical flavors prepared by our award-winning resort chef, including Kalua Pig, Seared Island Catch, Huli Huli Chicken and Carved Pulehu Rib Eye Steak.

- SUNDAY - THURSDAY
 BEGINNING AT 5:30 PM
- ENJOY ONE WELCOME MAI TAI
 & ONE SELECT BEVERAGE
- COMPLIMENTARY VALET &
 SELF PARKING

808.941.LUAU
 (5828)

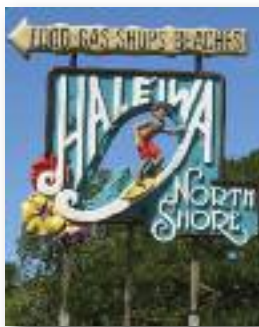
www.HiltonHawaiianVillage.com/luau

WAIKIKI
 STARLIGHT
Luuu

HILTON HAWAIIAN VILLAGE®
 WAIKIKI BEACH RESORT
 2005 KALIA ROAD, HONOLULU
 808.949.4321

North Shore

Continued from page 1.



and energizing as you turn around and head further up the road to Mokuleia and a trail ride with Hawaii Polo. If you have a group, Mike Dailey, head of the polo team can set up a lesson in “broom” polo with a beach ball – much easier to move around the field than mallets and polo balls. If you love horses it’s the perfect way to start the day on the North Shore.

Starving for adventure? A bit further up the road, at Dillingham Airfield where **The Original Glider Rides** give you a different ride and a birds-eye-view of the North Shore coastline. Feeling frisky? Book a **Skydive Hawaii** leap out of an airplane at 14,000 feet. It’s a million-dollar view. Your instructor, sticking right to you like brand new wallpaper, will teach you the turn and twirl.

Starving, again, this time for lunch, head back to the Northshore Marketplace for lunch with a shot (of tequila) at **Cholo’s Homestyle Mexican** tucked into the backside of the parking lot. Some of the best chips’n salsa in town, and they do a darn good Li Hing Mui Margarita – let alone the fish taco’s. **Silver Moon Emporium** is just across the parking lot, filled with cool clothes that can’t be found in Macy’s. Owner Lucy Talbot Holu has an eye for what works, bringing in the gypsy skirts by Northwest designer Terry Logan, the Logger’s Daughter. The shop features surf paintings by Josh Hoyer and a very eclectic selection of high end jewelry and fashion choices. While there, be sure to stop by some of the other stores like **Wyland Galleries, Polynesian Treasures**, and a **Patagonia** store.

Across Kamehameha Highway, **Oogenesis Boutique** is still there and continues to feature the works of the designer who opened the shop in 1970. Fashions are by INGA, Inga Himmelmann. The fun is shopping one of the wildest assortments of fashions and accessories on Oahu.

You are in the town that is known for shave ice. Don’t need to save room, it takes up little space after lunch. Now that Aoki’s has closed - expect the line at **Matsumoto’s** to be even longer. Beyond that drippy cone of goodness, you might consider buying and sharing a **Ted’s Bakery** haupia or chocolate pie, aided by a bunch of plastic forks. Total decadence. You can justify the experience because you will end up swimming for an hour at Waimea Bay then head into the park to hike Waimea Valley a bit later on.

Keep heading down the road and across from Kua Aina Burgers (in case you’re still hungry) be sure to make a stop at the **Clark Little Gallery** in the Haleiwa Town Center to see the works of one of the world’s best surf photographers.



Clark’s work has become so popular that Apple even flew him recently to shoot in Tahiti and San Francisco for their latest Retina Screen PR campaign. Clark’s shots are taken all around the North Shore including Waimea Bay as shown in the picture included here. At his gallery you can buy big art, small prints, coffee mugs, or grab one of his calendars, the gift that keeps on giving, every month, all year. His second coffee table book, “Shorebreak” is scheduled to come out in late November with 160 pages of his amazing photographs. Can’t make it out to the gallery this time around? Lucky for you, Nordstrom’s will be setting up a pop-up gallery in mid November for the holiday season downstairs next to the escalators for those that want to grab some of his work for that perfect gift.

Moving on down the road, **Waimea Bay** is waiting. On a “big” day you can watch pro surfers on monster waves. On a calm day, watch the bravehearts who “jump rock” from the top of the bay’s black rock, splashing into the water below. Only good swimmers with really good aim should try this.

Just across the highway is the road to Waimea Valley. **Waimea Falls**, located at the back of the valley, is a “don’t miss” destination. Getting there is really the best experience. Many people talk about never feeling alone in this valley. In a time before recorded time religious structures were constructed by priests. Two large heiau, or temples: Puu o Mahuka, Oahu’s largest heiau, is situated on a cliff overlooking the valley; and Kupopolo, which stands near the beach on the Waialua side of the river. Many cultural features can be found throughout the valley, reminding onlookers of Waimea’s lively past. Fishing shrines dot the coastal edges of the valley entrance, and the steep cliffs that form the valley walls contain many burial caves. House lots and agricultural terraces are found along the valley floor. You’ll have to walk all the way to Waimea Falls, no shuttle, either way. Got to work off that Ted’s pie right?

The oldest image of Waimea was painted by William Ellis, a crewman aboard the HMS Discovery when the ship anchored off the valley in 1779. Just a few tidbits of ancient lore about the valley survive, recorded during the early contact period. One tale is set in the bay at the mouth of the river. It seems a man named Kaneaukai transformed himself into a stone the size of a human head and a log the size of a body. Local fishermen pulled his two parts from the sea and reunited them within a shrine, ensuring ever afterward that fish would be locally plentiful. The stone and the log are long gone, but the shrine, made of rocks and recently reconstructed, still stands today.

Turtle Bay Resort is launching a new event called **Discover North Shore** on November 16 that will feature some of the best the North Shore has to offer. Learn more at discovernorthshore.com.

By now it is obvious that a day simply won’t do the North Shore justice. Still waiting for a visit; Sharks Cove for snorkeling nose to fin with friendly fishes, pictures with the turtles at Laniakea Beach, a stop by Pipeline and Sunset Beach to watch the big waves, can’t miss the shrimp trucks, play golf at the Turtle Bay Resort, and the Polynesian Cultural Center’s new Hawaiian Village with a half-dozen Hawaiian games of skill to play followed by a luau and the Ha’ Breath of Life show. My advice? Make more than one trip. ~ Lynn Cook



Chef's Corner

Signature Restaurant Executive Chef Ken MacKenzie

Recently Yummy Korean BBQ owner Peter Kim decided to tackle the long vacant spot once occupied by Aaron's. He reopened it as Signature Prime Steak & Seafood with former Ryan's Grill chef MacKenzie who has been living in the islands since his high school years to lead the charge. Here's why.

What was your first job in a kitchen?

I was attending Radford High School in the early 90s and got a job for Becky's Pizzeria on Hickam Air Force Base. I was in charge of making the dough for the day. I had no idea what I was doing, but all I know was it was fun.

What sparked your passion about being in the kitchen?

I remember my wife, her family and I reenacting our own version of Iron Chef during Christmas time one year. Our secret ingredient was left overs. My mother in-law won the battle. It was so much fun. They noticed I just naturally would go into the kitchen and start to cook or bake something, so they were like you should become a chef. 13 years later here I am.

When did you first become a chef?

I went to the Culinary of the Pacific at KCC for training, but you never really do enough until you get out into the industry. That is where you can really be creative. I worked at Ryan's Grill for 10 years and was able to create many special dishes and new menu items for the 6 years I was chef there.

Who would you consider your mentor and why?

Chef Robin Uyeda. I worked with him for 5 years; Robin let me create specials and be creative with whatever was available for use in the restaurant.

What brought you to Hawaii and when?

My Father was in the Air Force and we got stationed in Hawaii in 1991 after living in Belgium for 8 years.

What's always in your fridge?

I always have to have onions and garlic in my fridge. You can add them to any type of cuisine. From Mexican, Asian, European, Middle Eastern, you name it they probably use it in their dishes.

What's your favorite dish to cook at home?

My favorite dish to make at home is anything Thai. Thai beef salad, Papaya salad, Larb, Pad Thai, Tom Yum...the list goes on.

Name your go to ingredient and why?

There are so many. I guess it would be Kosher Salt. Salt is used in just about everything and really enhances any dish you have made.

What's your favorite midnight snack?

I have many favorites, but one that stands out is Ben and Jerry's Cherry Garcia Ice Cream.

What's your favorite thing to do when not working?

My favorite thing to do is go to the beach or hang out with my wife, Ferozah, and our two boys, Landon and Kaenon, then order take out. My wife cooks all the time, so when it's my turn to cook, I order take out!

When you go to a friends house, do they automatically ask you to cook? Love it or hate it?

No, my friends ask for tips on how to cook or season something, and then I'll end up cooking anyway. I love it though!

What's your favorite thing about living in the islands?

The cultural diversity. You can get just about any type of food on the island, Chinese, Thai, Japanese, Mexican, Brazilian, Indian...and you don't have to go far to get it.

What's one of your favorite restaurants to go to?

Sasabune, they have the most unbelievably freshest fish and seafood from around the world. You have to get the omakase. Just follow the rules and trust the chef.

What do you love most about working in a kitchen?

I love the challenge. Every day is different. You have to prepare the kitchen for your guests each day. You want everyone that comes to your restaurant to leave with a great experience from the service to the food.

What do you want to make sure people know about Signature?

The goal of Signature Prime Steak and Seafood is to serve only the best steaks and seafood from around the United States...and wine!

Thai Beef Salad

Serves 2



INGREDIENTS

- 8 oz. Beef, Skirt Steak, or your favorite cut
- 2 Tbsp Fish sauce
- 3 each Limes, cut in half
- 1 each Thai chili peppers, minced
- 1 each Japanese cucumbers, cut into half moons
- 1/2 each Medium Red onion, sliced very thinly
- 10 each Cherry tomatoes, cut in half
- 2 Tbsp Mint, chopped
- 2 Tbsp Cilantro, chopped
- 2-3 oz Spring Greens salad mix
- 3:1 Kosher salt and pepper, blend as needed

DIRECTIONS:

1. Season steak liberally with salt and pepper. Grill or broil in oven until medium rare. Let stand for a minute, then slice thin.
2. Cut all ingredients to specs. Mix the Thai chili, cucumbers, onion, tomatoes, mint, cilantro in a mixing bowl, then add the cut meat.
3. Squeeze the lime juice from the limes and then add the fish sauce.
4. Toss gently, then place the spring greens in a bowl and top with some chopped cilantro and mint and serve with a squeeze of lime.

Signature Prime Steak & Seafood is located atop the Ala Moana Hotel on the 36th floor. Open nightly from 4:30 - 10 p.m. Happy Hour: 50% off bar menu from 4:30 - 6:30 p.m. Phone: 949-3636 • SignaturePrimeSteak.com • Twitter: @theSignatureSTK

Eat Out!

NOVEMBER 18-24

Sixth Annual RESTAURANT WEEK HAWAII



Make your reservations now for prix fixe menus and special offers at OVER 100 of Hawaii's top restaurants and eateries.



For MENUS & DETAILS visit RestaurantWeekHawaii.com

Official Mobile Site Sponsor AMERICAN SAVINGS BANK



A benefit for the Culinary Institute of the Pacific at Diamond Head

Let's be Together...

DINING ▸ ENTERTAINMENT ▸ PAU HANA ▸ EAT ▸ DRINK ▸ BE MERRY ▸ HAPPY HOUR

MONDAY

Bin1901 at the Moana	921-4600
<i>Piano Wine Bar</i>	
Scott Smith	6:30-9:30pm
Chart House Waikiki	941-6660
<i>Live Contemporary Hawaiian</i>	
Eric Ho & Derrick Lee	6:30-9:30pm
Cheesecake Factory	924-5001
<i>Classic Hawaiian</i>	
Christian Yrizarry Duo	8-11pm
Duke's Canoe Club Waikiki	922-2268
<i>Live Contemporary Hawaiian</i>	
Ellsworth Simeona	4-6pm
Haumea Warrington	10-12am
Hang Ten Bar at Turtle Bay	293-6000
<i>Live Contemporary Hawaiian</i>	
Art Kalahiki Duo	6-8pm
Hard Rock Cafe	955-7383
<i>Live Contemporary</i>	
Zanuck & Piranha Duo	5-7pm
Blue Mondays Varying Artists	9-11am
House Without a Key	923-2311
<i>Live Hawaiian & Hula by Skyler Kamaka</i>	
DeLima Ohana	5:30 - 8:30pm
Hula Grill	923-HULA
<i>Live Contemporary Hawaiian</i>	
Eric Lee	7-9pm
Kani Ka Pila Grille	924-4992
<i>Live Contemporary Hawaiian</i>	
Sean Na'auao	6 - 9pm
Lewers Lounge	923-2311
<i>Live Contemporary & Light Jazz</i>	
Noly Pa'a	8:30-12:30am
LuLu's	926-5222
<i>Live Contemporary</i>	
Johnny Helm	6:30-9:30 p.m.
Rumfire	921-4600
<i>Live Contemporary Hawaiian</i>	

Jeremy Cheng	5-8pm
DJ Super CW	8:30pm-12:30am
Sunrise Pool Bar at the Modern	943-5800
<i>Live Contemporary</i>	
Alex Oasay	5-8pm
The Edge at the Sheraton	921-4600
<i>Live Hawaiian music with a fire dancer at 7:30 p.m.</i>	
Randy Allen	1:30-3:30pm
Naluhoe Duo	6:30-8pm
Tiki's Grill & Bar	923-TIKI
<i>Live Contemporary Hawaiian</i>	
Canoes 4 Rent	6:30-8:30pm
Jason Alan & Ian O'Sullivan	9-11pm
Tropics Bar & Grill	949-4321
<i>Live Contemporary Hawaiian</i>	
Acoustik Playground	5:30-8:30pm

Sunrise Pool Bar at the Modern	943-5800
<i>Live Contemporary Hawaiian</i>	
Cory Oliveros	5-8pm
The Edge at the Sheraton	921-4600
<i>Live Hawaiian music with a fire dancer at 7:30 p.m.</i>	
Kelly Villaverde	1:30-3:30pm
Ho'okani Duo	6:30-8pm
Tiki's Grill & Bar	923-TIKI
<i>Live Hawaiian - \$2 Taco Tuesdays</i>	
K.B. Riley	5:30-8:30pm
Sani & Friends	9-11pm
Tropics Bar & Grill	949-4321
<i>Live Contemporary Hawaiian</i>	
Kailua Bay Buddies	5:30-8:30pm

TUESDAY

Bin1901 at the Moana	921-4600
<i>Piano Wine Bar</i>	
Kapena Delima	6:30-9:30pm
Chart House Waikiki	941-6660
<i>Live Contemporary Hawaiian</i>	
Eric Ho & Derrick Lee	6:30-9:30pm
Cheesecake Factory	924-5001
<i>Classic Hawaiian</i>	
Art Kalahiki Duo	8-11pm
Duke's Canoe Club Waikiki	922-2268
<i>Live Contemporary Hawaiian</i>	
Haumea Warrington	4-6pm
Ellsworth Simeona	10-12am
Hang Ten Bar at Turtle Bay	293-6000
<i>Live Contemporary Hawaiian</i>	
Christian Yrizarry Duo	6-8pm
Hard Rock Cafe	955-7383
<i>Live Contemporary</i>	
Alex Oasay Duo	5-7pm
Simple Souls (or others)	9-11pm
House Without a Key	923-2311
<i>Live Hawaiian & Hula by Radasha Ho'ohuli</i>	
Po'okela	5:30 - 8:30pm
Hula Grill	923-HULA
<i>Live Contemporary Hawaiian</i>	
Kamuela Kahoano	7-9pm
Indigo	521-2900
<i>Live Music Tuesdays (1st one of the month is jazz)</i>	
Varying Artists	6 - 9pm
Kani Ka Pila Grille	924-4992
<i>Live Contemporary Hawaiian</i>	
Weldon Kekauoha	6-9pm
Lewers Lounge	923-2311
<i>Live Contemporary & Light Jazz</i>	
Maggie Herron & Rocky Holmes	8:30-12:30am
LuLu's	926-5222
<i>Live Contemporary</i>	
Johnny Helm	6-9pm
Mai Tai Bar at the Royal Hawaiian	923-7311
<i>Live Contemporary Hawaiian with Hula Dancer</i>	
Kapala Duo	6:30-9:30pm
Rumfire	921-4600
<i>Live Contemporary Rock</i>	
Randy Allen	5-8pm

WEDNESDAY

Bin1901 at the Moana	921-4600
<i>Piano Wine Bar</i>	
Scott Smith	6:30-9:30pm
Chart House Waikiki	941-6660
<i>Live Contemporary Hawaiian</i>	
Tito Berinobis & Billy Beimes	6-9pm
Cheesecake Factory	924-5001
<i>Classic Hawaiian</i>	
Dennis McLees Duo	8-11pm
Duke's Canoe Club Waikiki	922-2268
<i>Acoustic, Soul, R&B</i>	
Ellsworth Simeona	4-6pm
Haumea Warrington	9:30-12am
Du Vin	545-1115
<i>Sessions at Du Vin features Live Jazz Wednesdays.</i>	
Shoji Ledward	7-9pm
Gordon Biersch	599-4877
<i>Jazz Wednesdays</i>	
Varying Artists	6:30-9:30pm
Hard Rock Cafe	955-7383
<i>Live Contemporary</i>	
John Valentine	5-7pm
Piranha Brothers	9-11pm
Adam Crowe Duo (11/6; 11/13)	9-11pm
House Without a Key	923-2311
<i>Live Hawaiian & Hula</i>	
Pa'ahana	5:30 - 8:30pm
Hula Grill	923-HULA
<i>Live Contemporary Music</i>	
Jeremy Chang	7-9pm
Hy's Steak House	922-5555
<i>Live Soft Contemporary</i>	
Audy Kimura	6:30-10pm
Kani Ka Pila Grille	924-4992
<i>Live Contemporary Slack Key</i>	
Cyril Pahinui	6-9pm
LBL at the Hilton Waikiki Beach Hotel	922-0811
<i>Live Contemporary Funk, Jazz, Hip Hop & Reggae</i>	
Jason Laeha	6-9pm
Lewers Lounge	923-2311
<i>Live Contemporary & Light Jazz</i>	
Maggie Herron & Rocky Holmes	8:30-12:30am
LuLu's	926-5222
<i>Live Contemporary Hawaiian</i>	
Jason Lehua	10-12:30am
Mai Tai Bar at the Royal Hawaiian	923-7311



IL LUPINO
TRATTORIA & WINE BAR

GOOD MORNING!!!
Start your day off deliciously with Fresh Fruits & Juices, an Acai Bowl, Macadamia Nut Pancakes, a Belgian Waffle, French Toast, Organic Oatmeal, a Frittata, Eggs Benedict, Omelets, a Mimosa & much more!

BREAKFAST DAILY 7-11 A.M. & 'TIL NOON ON WEEKENDS!!!

ROYAL HAWAIIAN CENTER
VALIDATED PARKING
WWW.ILLUPINO.COM • 808.922.3400

E Pili Kākou

DINING ▶ ENTERTAINMENT ▶ PAU HANA ▶ EAT ▶ DRINK ▶ BE MERRY ▶ HAPPY HOUR

Live Contemporary Hawaiian with Hula Dancer
Eric Lee Duo 6:30-9:30pm
Rumfire 921-4600
Live Contemporary Hawaiian
Kamuela Kahoano 5-8pm
SWIM at the Hyatt 923-1234
Contemporary Classic
Little Albert 5-8pm
Sunrise Pool Bar at the Modern 943-5800
Live Contemporary Hawaiian
Tahiti Rey 5-8pm
The Edge at the Sheraton 922-4422
Live Hawaiian music with a fire dancer at 7:30 p.m.
Albert Maligmat 1:30-3:30pm
Keoni Ku Duo 6:30-8pm
Tiki's Grill & Bar 923-TIKI
Live Contemporary - 1/2 off Wine Wednesdays
Kapu 5:30-8:30pm
Johnny Helm 9-11pm
Tropics Bar & Grill 949-4321
Live Contemporary Rock
Acoustik Playground 5:30-8:30pm

THURSDAY

Barefoot Beach Café at Queen's Beach 924-2233
Live Contemporary Hawaiian with Pasta Night
Kaipo Dabin Duo 5:30-8:30pm
Bin1901 at the Moana 921-4600
Piano Wine Bar
Scott Smith 6:30-9:30pm
Chart House Waikiki 941-6660
Live Contemporary Hawaiian
Tito Berinobis 6:30-9:30pm
Cheeseburger Waikiki 941-2400
Contemporary / Old School Rock
Jeremy Chang 6:30-9:30pm
Cheesecake Factory 924-5001
Classic Hawaiian
T & J Duo 8-11pm
Kaiona Duo (11/14; 11/28) 8-11pm
Duke's Canoe Club 922-2268
Live Contemporary Hawaiian
Haumea Warrington 4-6pm
Lawrence Kidder 10-12am
Five-O Bar & Lounge 922-0550
Live Acoustic Contemporary & Reggae
K Love Duo 7:30-10:30pm
Gordon Biersch 599-4877
Live Contemporary Funk and Classics
Acoustic Playground 7-10:30pm
Hang Ten Bar at the Turtle Bay 293-6000
Live Hawaiian Contemporary
Local Folk 6-8pm
Hard Rock Cafe 955-7383
Live Contemporary
Chris Rego (or others) 5-7pm
Kailua Bay Buddies 9-11pm
House Without a Key 923-2311
Live Hawaiian & Hula
Pa'ahana 5:30 - 8:30pm
Hula Grill 923-HULA
Live Contemporary Hawaiian

Sheila Waiwaiole & Mara Sagapolu 7-9pm
Hy's Steak House 922-5555
Live Soft Contemporary
Audy Kimura 6:30-10pm
Kani Ka Pila Grille 924-4992
Live Contemporary Hawaiian
Kawika Kahiapo 6-9pm
LBLE 922-0811
Live Contemporary Pop/Rock
Sunway 6-9pm
Lewers Lounge 923-2311
Contemporary Jazz
Maggie Herron & Rocky Holmes 8:30-12:30am
LuLu's 926-5222
Live Contemporary Hawaiian
Local Uprising 6-9pm
Mai Tai Bar at the Royal Hawaiian 923-7311
Live Contemporary Hawaiian with Hula Dancer
Delima Ohana 6:30-9:30pm
Michel's at the Colony Surf 923-6552
Live Slack Key
Jeff Peterson 7:30-10:00pm
Rumfire 921-4600
Live Contemporary Rock
Johnny Helm 5-8pm
DJ Mike 8:30pm-12:30am
Sunrise Pool Bar at the Modern 943-5800
Live Contemporary Hawaiian
Christian Yrizarry Duo 5-8pm
SWIM at the Hyatt 923-1234
Contemporary Classic
Tahiti Rey & Jason Alan 5-8pm
The Edge at the Sheraton 921-4600
Live Hawaiian music with a fire dancer at 7:30 p.m.
Ellsworth Simeona 1:30-3:30pm
Widdy Loo (11/14) 1:30-3:30pm
Christian Yrizarry Duo 6:30-8pm
The Study at the Modern 943-5800
Live Contemporary Hawaiian
Simple Souls 6:30-8:30pm
Tiki's Grill & Bar 923-TIKI
Heineken Hot Hula Nights - hula dancers perform
Malu 5:30-7:30pm
Piko & Ellsworth 8:30-11:30pm
Tropics Bar & Grill 949-4321
Live Contemporary Hawaiian
Nohelani Cypriano 5:30-8:30pm

FRIDAY

Barefoot Beach Café at Queen's Beach 924-2233
Live Contemporary Hawaiian with Beach BBQ
Art Kalahiki & Friends 5:30-8:30pm
Bin1901 at the Moana 921-4600
Piano Wine Bar
Scott Smith 6:30-9:30pm 7-8:30pm
Chart House Waikiki 941-6660
Live Contemporary Hawaiian
Mark Yim's Pilikia I 6-9pm
Mark Yim's Pilikia II 9:30-12:30am
Cheeseburger Waikiki 941-2400
Contemporary Hawaiian
Alex or Aku 6:30-9:30pm

Cheesecake Factory 924-5001
Classic Hawaiian
Terry Stebbins Duo 8:30-11:30pm
Dave & Busters 589-2215
Pau Hana Fridays Live Local Bands
Varying Hawaiian Artists 6-8pm
Duke's Canoe Club Waikiki 922-2268
Live Contemporary Hawaiian
Maunaloa 4-6pm
Haumea Warrington 10-12am
Five-O Bar & Lounge 922-0550
Live Island Reggae
Kimo Opiana 9-12am
Gordon Biersch 599-4877
Live Contemporary, R&B, Funk
Ben & Malia 5:30-9pm
Mojo 9 - 12:30am
Hang Ten Bar at the Turtle Bay 293-6000
Live Contemporary Hawaiian with fire dancer
Jherard Miller Duo 5:30-8:30pm
Hard Rock Cafe 955-7383
Live Contemporary
Johnny Helm 5-7pm
Mantra 10-12am
House Without a Key 923-2311
Live Hawaiian & Hula
Sunset Seranaders 5:30 - 8:30pm
Hula Grill 923-HULA

IT'S GAMETIME!

Join us for NFL and College Football!

Open 30 minutes prior to kickoff on Saturdays and Sundays

First-come, first-served seating

Waikiki's Largest Breakfast Selection served ALL DAY

HAPPY HOUR during Monday Night and Thursday Night Football!

GIOVANNI PASTRAMI

227 LEWERS ST, WAIKIKI 808-923-2100

Let's be Together...

DINING ▸ ENTERTAINMENT ▸ PAU HANA ▸ EAT ▸ DRINK ▸ BE MERRY ▸ HAPPY HOUR

Live Traditional Hawaiian with dancer
David Asing & Alika Souza 7-9pm
Hy's Steak House 922-5555
Live Soft Contemporary
Audy Kimura 6:30-10pm
Jimmy Buffett's at the Beachcomber 791-1200
Live Contemporary Hawaiian
Kailua Bay Buddies 9:30-11:30pm
Hang Ten Bar at the Turtle Bay 293-6000
Fireshow with 13-yr old 5x world fire knife champion
Jherard Miller Duo 5-8pm
Hard Rock Cafe 955-7383
Live Contemporary
Johnny Helm 5-7pm
Mantra 9-11pm
Piranha Brothers (11/15 - video release party) 10-12pm
Kani Ka Pila Grille 924-4992
Live Hawaiian Contemporary
Kaukahi 6-9pm
LBLE at the Hilton Waikiki Beach Hotel 922-0811
Live Contemporary Pop/Rock
Sunway 6-9pm
Lewers Lounge 923-2311
Live Contemporary Jazz
Maggie Herron & Rocky Holmes 8:30-12:30am
LuLu's 926-5222
Live Contemporary Hawaiian
Manoa DNA 6-9 p.m.
Vinyl Wine 10-12:30am
Mai Tai Bar at the Royal Hawaiian 923-7311
Live Contemporary Hawaiian with Hula Dancer
Kapala Duo 6:30-9:30pm
Michel's at the Colony Surf 923-6552
Live Slack Key Stylings & Jazz
Jeff Peterson & Ernie Provencher 6:30-10pm
Rumfire 921-4600
Live Contemporary Hawaiian
Johnna Padeken 5-8pm
DJ Sound Check 8:30pm-12:30am

SWIM at the Hyatt 923-1234
Contemporary Classic
Taimane 6-7pm
Wade Cambern 7:30-9:30pm
The Edge at the Sheraton 921-4600
Live Hawaiian music with a fire dancer at 7:30 p.m.
Brad Kawakami 1:30-3:30pm
Delima Duo 6:30-8pm
The Study at the Modern 943-5800
Live Contemporary Hawaiian
Tahiti Rey 7-10pm
Tiki's Grill & Bar 923-TIKI
Live Contemporary Hawaiian
Kaleo Del Sol 5-7pm
Vaihi 7:30-9:30pm
Tahiti Rey Duo 10-12am
Tropics Bar & Grill 949-4321
Live Contemporary Hawaiian
Piranha Brothers 3:30-6:30pm
Nohelani Cypriano 8:00-10:30pm

Sunset Seranaders 5:30 - 8:30pm
Hula Grill 923-HULA
Live Traditional Hawaiian with dancer
Kaipo Dabin & Tommy Chock w/ Kahanu 7-9pm
Hy's Steak House 922-5555
Live Soft Contemporary
Audy Kimura 6:30-10pm
Jimmy Buffett's at the Beachcomber 791-1200
Live Contemporary Hawaiian
Kailua Bay Buddies 9:30-11:30pm
Kani Ka Pila Grille 924-4992
Live Contemporary Hawaiian
Manoa DNA 6-9pm
LBLE at the Hilton Waikiki Beach Hotel 922-0811
Live Contemporary Pop/Rock
Michael Fabbri 6-9pm
Lewers Lounge 923-2311
Live Contemporary Jazz
Maggie Herron & Rocky Holmes 8:30-12:30am
Mai Tai Bar at the Royal Hawaiian 923-7311
Live Contemporary Hawaiian with Hula Dancer
Kapala Duo 6-10pm
Michel's at the Colony Surf 923-6552
Live Contemporary Slack Key & Jazz
Jeff Peterson 7-11pm
Rumfire 921-4600
Live Contemporary Hawaiian
Ellsworth Simeona 5-8pm
DJ Sho 8:30pm-12:30am
Signature Prime Steak 949-3636
Piano player with vocalist singing jazz standards
Jennifer Cleve Sojot 6:30-8:30pm
Sunrise Pool Bar at the Modern 943-5800
Live Contemporary Hawaiian
Kainalu 5-8pm
SWIM at the Hyatt 923-1234
Contemporary Classic
Taimane 6-7pm
Wade Cambern 7:30 - 9:30pm
The Edge at the Sheraton 921-4600
Live Hawaiian music with a fire dancer at 7:30 p.m.
John Valentine 1:30-3:30pm
Tino Jacobs Duo 6:30-8pm
Tiki's Grill & Bar 923-TIKI
Live Contemporary Hawaiian & Reggae
Johnny Helm 5-7pm
Sani and Friends (or others) 7:30-9:30pm
Ellsworth Simeona 10-1am
Tropics Bar & Grill 949-4321
Live Contemporary Hawaiian
Henry Kaponu 4-6pm
Juke Joint 6:30-9:30pm

SATURDAY

Barefoot Beach Café at Queen's Beach 924-2233
Beach BBQ with Live Contemporary Hawaiian
Alika Souza 5:30-8:30pm
Bin1901 at the Moana 921-4600
Piano Wine Bar
Scott Smith 6:30-9:30pm
Chart House Waikiki 941-6660
Live Contemporary Hawaiian
Tito Berinobis & Billy Beimes 8-12pm
Cheeseburger Waikiki 941-2400
Contemporary Hawaiian
Alex or Aku 6:30-9:30pm
Cheesecake Factory 924-5001
Classic Hawaiian
Koa Siu Duo 8:00-11pm
Duke's Canoe Club Waikiki 922-2268
Live Hawaiian Entertainment
Kapena (11/2; 11/23) 4-6pm
Sean Naauao (11/9) 4-6pm
Simple Sessions (11/16) 4-6pm
Beach 5 (11/30) 4-6pm
Kaiona Duo (11/2) 9:30-12am
Kaala Boys Duo (11/9) 9:30-12am
Chris Murphy Duo (11/16) 9:30-12am
Kona Chang Duo (11/23) 9:30-12am
Jason Alan Duo (11/30) 9:30-12am
Five-O Bar & Lounge 922-0550
Live Island Reggae
Christian from Hoonua 9:30-12:30am
Hang Ten Bar at the Turtle Bay 293-6000
Live Contemporary Hawaiian
Jherard Miller Duo 5-8pm
Mike Tulba Duo (11/2, 11/30) 5-8pm
Hard Rock Cafe 955-7383
Live Contemporary
20 Degrees North 5-7pm
Tavana 10-1am
Streetlight Cadence (11/16) 10-1am
House Without a Key 923-2311
Hawaiian & Hula

Michel's at the Colony Surf 923-6552
Live Contemporary Jazz
Maggie Herron & Rocky Holmes 8:30-12:30am
Mai Tai Bar at the Royal Hawaiian 923-7311
Live Contemporary Hawaiian with Hula Dancer
Kapala Duo 6-10pm
Michel's at the Colony Surf 923-6552
Live Contemporary Slack Key & Jazz
Jeff Peterson 7-11pm
Rumfire 921-4600
Live Contemporary Hawaiian
Ellsworth Simeona 5-8pm
DJ Sho 8:30pm-12:30am
Signature Prime Steak 949-3636
Piano player with vocalist singing jazz standards
Jennifer Cleve Sojot 6:30-8:30pm
Sunrise Pool Bar at the Modern 943-5800
Live Contemporary Hawaiian
Kainalu 5-8pm
SWIM at the Hyatt 923-1234
Contemporary Classic
Taimane 6-7pm
Wade Cambern 7:30 - 9:30pm
The Edge at the Sheraton 921-4600
Live Hawaiian music with a fire dancer at 7:30 p.m.
John Valentine 1:30-3:30pm
Tino Jacobs Duo 6:30-8pm
Tiki's Grill & Bar 923-TIKI
Live Contemporary Hawaiian & Reggae
Johnny Helm 5-7pm
Sani and Friends (or others) 7:30-9:30pm
Ellsworth Simeona 10-1am
Tropics Bar & Grill 949-4321
Live Contemporary Hawaiian
Henry Kaponu 4-6pm
Juke Joint 6:30-9:30pm

SUNDAY

Barefoot Beach Café at Queen's Beach 924-2233
Live Hawaiian Music
Paul Wilcox 11am -2pm
Bin1901 at the Moana 921-4600
Piano Wine Bar
Eric Lee 3 - 5:30pm
Kapena Delima 6:30-9:30pm
Chart House Waikiki 941-6660

How can we help?

We're a family business dedicated to service, safety, quality & fun. Ocean activities for all ages and budgets. We're at your service to help provide a perfect match for your client.

Spirit of Aloha, one of the many yachts in our fleet



KO OLINA • HILTON PIER • KEWALO
Sail • Snorkel • Dolphins • Scuba • Snuba • Fireworks • Dinner • Private • Luxury Charter • Surf Cruise

234-SAIL

(7245)

WE ANSWER 24 HOURS!

hawaiinautical.com

Hawaii Nautical



E Pili Kākou

DINING ▶ ENTERTAINMENT ▶ PAU HANA ▶ EAT ▶ DRINK ▶ BE MERRY ▶ HAPPY HOUR

Live Contemporary Hawaiian		
Dean & Dean	6-9pm	
Cheesecake Factory		924-5001
Classic Hawaiian		
Chris Murphy Duo	8-11pm	
Duke's Canoe Club Waikiki		922-2268
Live Hawaiian Entertainment		
Henry Kaponu	4-6pm	
Terry Stebbins Duo	9:30-12am	
Jason Alan Duo (11/10)	9:30-12am	
Kamuela Kahoano Duo (11/17)	9:30-12am	
Hard Rock Cafe		955-7383
Live Contemporary		
Brothers Rize	5-7pm	
Streetlight Cadence (or others)	9-11pm	
House Without a Key		923-2311
Live Hawaiian & Hula		
Pa'ahana	5:30 - 8:30pm	
Hula Grill		923-HULA
Live Traditional Hawaiian with dancer		
Art Kalahiki Duo	7-9pm	
Jimmy Buffett's at the Beachcomber		791-1200
Live Contemporary Hawaiian		
Jeremy Chang	8:30-10:30pm	
Kani Ka Pila Grille		924-4992
Live Contemporary Hawaiian		
Hoku Zuttermeister	6-9pm	
Kelley O'Neil's		926-1777
Live Irish Music		
Various Celtic Bands	4-7pm	
Lewers Lounge		923-2311
Live Contemporary & Light Jazz		
Noly Pa'a	8:30pm - 12am	
LuLu's		926-5222
Acoustic R&B		
Simple Soulz	7-10pm	
Mai Tai Bar at the Royal Hawaiian		923-7311
Live Contemporary Hawaiian with Hula Dancer		
Tino Jacob Duo	6-10pm	
Michel's at the Colony Surf		923-6552
Classical Slack Key & Jazz Stylings		
Jeff Peterson	6-9pm	
Rumfire		921-4600
Live Contemporary Hawaiian		
Kona Chang Duo	5-8pm	
DJ Sho	8:30pm - 12:30am	
Sunrise Pool Bar at the Modern		943-5800
Live Contemporary Hawaiian		
Jeremy Cheng	5-8pm	
The Edge at the Sheraton		922-4422
Live Hawaiian music with a fire dancer at 7:30 p.m.		
Jeremy Cheng	1:30-3:30pm	
Ellsworth Simeona Duo	6:30-8:30pm	
Tiki's Grill & Bar		923-TIKI
Live Contemporary Hawaiian		
Vaihi	6-9pm	
Ellsworth Simeona	9-11pm	
Tropics Bar & Grill		949-4321
Live Contemporary Rock & Hawaiian		
Piranha Brothers	2-5pm	
Beach 5	5:30 - 8:30pm	



Hot Lines

Here's a few numbers for you to find out the latest in live music from places that change daily or don't update us regularly, since we can't possible list them all,

Gordon Biersch	599-4877
Irish Rose Saloon	947-3414
Kelley O'Neil's	926-1777
Mai Tai Bar Ala Moana	947-2900
Moose McGillycuddy's	923-0751

Dining Dish



While **Bali Steak & Seafood** continues to undergo renovations, the Rainbow Lanai has announced that for the time being, they will be offering a limited Bali menu to diners throughout remodeling. 949-4321. • **Azure Restaurant** at the Royal Hawaiian Hotel has announced that *Shaymus Alwin* has been named chef de cuisine. Alwin studied under the renown Thomas Keller at The French Laundry in California and previously worked for the The Bistro at Century Center, and Chai's Island Bistro. Most recently he served as the executive sous chef at Azure. 923-7311. • Football season is now fully underway and **Giovanni Pastrami** has pumped up the value of Thursday Night Football by offering NFL raffles and \$25 gift certificate giveaways to those there to enjoy the game. Guests can also enter to win a grand prize drawing every Thursday night for a trip for two to San Francisco for the Seahawks v. 49ers game on December 8th. Trip includes roundtrip airfare for two, hotel, and game tickets. Must be present to win when the drawing is held during Thursday Night Football on November 21. 923-2100. • Many of you have been telling me to go check out **YuZu Ala Moana** for some time, but although I had stopped in for a drink once or twice, I only just recently tried some menu items and... you guys were right. I was pleasantly surprised by what I tasted. I thought the Lotus Root Pizza (\$8.95) was great. Loved the texture and thought the cheesy combination worked really well. I also quite liked the Yuzu Pepper Yakitori (\$3.95). The chicken was moist and juicy and had a nice kick to it. The Lobster Udon (\$18.95) was good. It was a little one note, but the noodles were great. They actually hand-cut their udon to order so that was a nice touch. The drinks made liberal use of yuzu, which is a citrus I'm quite fond of, so those worked. It's slightly more expensive than your average sushi place, so if you want to test it out first, you might want to take advantage of their \$12 daily lunch special which includes a drink available from 11:30 a.m. - 2 p.m. or check out their happy hour between 5-6 p.m. daily. 943-1155 or yuzuhawaii.com. • The comments from my Assaggio's bartender story continue to come in. From sarcastic comments like they're holding a table for me in the middle of H-1 to a GM-type telling me he read it to his entire staff as an example of what not to do, the most surprising comment was when someone called me to

tell me it had just happened to them somewhere else. This time, the person went right back and asked if they thought their manager thought it was ok that they were doing that, and what do you know, a seat opened up. Contrary to what some of you may think, I did not write that to simply bag on the bartender - but more to prove a point about how important a role guest service plays in the overall picture - and how easy it is for one person's actions to ruin everyone else's hard work.

~ Pam



Dining Calendar

November 12: *Hiroshi Eurasian Tapas* hosts a special Anthill Farms wine dinner. Winemaker Webster Marquez will in town for this special event. Check hiroshi-hawaii.com for price and time.

Mondays: *Brasserie du Vin* has combined their weekly wine dinner and tasting events into one, Behind the Cellar Door. 6:30 p.m. 545-1115.

Wednesdays: *Beachhouse at the Moana* hosts a weekly wine tasting on the lanai with pupus and parking. \$19++. 4:30 - 5:30 p.m. 923-2861.

Wednesdays: *Bar 35: House of Brews* features a different theme weekly. Taste 6-8 beers, and enjoy Chef Valenti's pizza. \$20. 6 p.m. 537-3535.



BAREFOOT BEACH CAFE
WAIKIKI, HI

Open Daily, 7am - 9pm
Serving Breakfast, Lunch & Dinner

Live Music every Thu, Fri & Sat,
5:30-8:30pm, Sun, 11am-2pm

Available for Private Parties
& Special Events

2699 Kalakaua, on the beach
in Waikiki, across from the
Kapiolani Park Bandstand



Concierge Line:
808.699.8810

Info@BarefootBeachCafe.com

EVENTS ARE SUBJECT TO CHANGE
WITHOUT NOTICE.

NOVEMBER CALENDAR OF EVENTS

Continuing Events

MONDAY – FRIDAY
LYON ARBORETUM TOURS

The lush gardens at the top of the University of Hawai'i Manoa are open for guided tours daily. Knowledgeable guides will introduce the highlights of the botanical rainforest's 193.6 acres. Reservations required. Limit of 12 participants daily. Donations accepted. 988-0461.

MONDAY-FRIDAY
FOSTER BOTANICAL GARDENS

Guided garden tours of rare and beautiful plants from tropical regions throughout the world. Foster Botanical Gardens, 50 N. Vineyard. 1 p.m. Adults: \$5. Reservations recommended. 522-7066.

TUESDAYS
TOURS OF THE HAWAII THEATRE

Get a behind-the-scenes tour of this historic theatre including history, architecture, and a performance on the 1922 Robert Morton theatre organ. Hawaii Theatre. 11 a.m. – 12 p.m. \$10. 528-0506.

TUESDAYS • KU HA'AHEO

An afternoon of hula from multiple groups featuring adults and keiki performing contemporary and traditional dance and music led by kumu hula Blaine Kamalani Kia. Waikiki Beach Walk Plaza Lawn. 4:30 – 6 p.m. FREE. waikikibeachwalk.com or 931-3591.

TUESDAYS
KCC FARMERS MARKET

The Saturday Market is so popular they added another day. Head up to Kapiolani Community College for fresh island produce, seafood, flowers, and more available from over two dozen vendors. 4 – 7 p.m. Free. 848-2074.

FIRST & THIRD TUESDAYS
MEET THE MONK SEALS!

Learn about monk seals in the wild and meet two resident seals up close. Designed for participants 7 and up but anyone is welcome. Waikiki Aquarium. 3 p.m. \$4 – \$6. waquarium.org or 923-9741.

TUESDAYS & FRIDAYS
WAIKIKI FARMERS MARKET

Fresh local produce, organic pastries and food

booths. Waikiki Community Center. Free. 7 – 11:30 a.m. waikikicomunitycenter.org. 923-1802.

THURSDAYS & SUNDAYS
TOUR AND TEA AT THE
HONOLULU ACADEMY OF ARTS

Tours are led by volunteer docents and designed for visitors who want to explore the galleries, learn more about art and culture, and socialize over a cup of tea. Docents lead discussions in the galleries and offer insight into many cultures and time periods. 2:30 – 4 p.m. in selected galleries. Free with admission; beverage donations welcomed. Reservations required. 532-8700.

TUESDAY – SATURDAY
MISSION HOUSES MUSEUM GUIDED TOURS

Visit the Printing Office and Frame House while learning about the 19th century history and culture preserved at this beautiful museum. Galleries also open to explore on your own. Mission Houses Museum. Tues. – Sat. 11 a.m. & 2:45 p.m.; Tues. – Fri. 1 p.m. \$6 – \$10. 531-0481 or missionhouses.org.

SECOND WEDNESDAY (NOVEMBER 13)
STARGAZING

The Hokulani Imaginarium puts on a live star show while teaching about the mythology surrounding constellations. Windward CC, 45-720 Keaahala Rd., Kaneohe. 7 p.m. Adults \$7, Keiki (ages 4-12) \$5. Tickets:aerospace.wcc.hawaii.edu/imaginarium.html or 235-7433.

WEDNESDAYS & FRIDAYS
CHADO – THE WAY OF TEA

Japanese enthusiasts can experience the traditional tea ceremony (chanoyu) as it was meant to be seen and taught at the Uransen Foundation of Hawaii. No prior knowledge required. Demos at 10 a.m. and 11 a.m. \$5. 923-3059.

THIRD THURSDAY (NOVEMBER 21)
DOWNTOWN GALLERY WALK & CRAFT FAIR

The Arts at Marks Garage continues to build on downtown activities offering execs an excuse to hang out after work and giving everyone else a reason to head downtown. Free. 521-2903. artsatmarks.com.

FRIDAYS
SENIOR SAFARI WALKABOUT

Continuing due to popular demand! Make exercise fascinating and fun while exploring the zoo. Staff will guide the walks, sharing wildlife facts and stories. Honolulu Zoo. 9 – 10 a.m. \$5 donation supports Zoo Education programs. 971-7195 or honolulu zoo.org.

FIRST FRIDAY (NOVEMBER 1)
DOWNTOWN GALLERY WALK & CRAFT FAIR

Art lovers are advised to head to downtown Honolulu the first Friday of each month. This event has exploded into a downtown party with galleries and studios open for exhibitions, artist demonstrations, and special performances. 23 galleries and art-related retail shops, restaurants and museums participate. Downtown Honolulu/ Chinatown. 6 – 9 p.m. Free. 521-2903 or artsatmarks.com.

FIRST & THIRD FRIDAYS (NOVEMBER 1 & 15)
THE SKY TONIGHT

Learn about our Hawaiian skies and current events in space at the J. Watumull Planetarium. Bishop Museum. 8 p.m. No late seating. GA \$6, Keiki \$4. 848-4168 or bishopmuseum.org.

THIRD FRIDAYS KAIMUKI (NOVEMBER 15)
The neighborhood comes to life during this monthly street fest where restaurants all open their doors and

local businesses offer fun discounts and sales. Live entertainment and free food samples make this fun for the whole family. Koko Head to 8th Ave and Waialae. 6 – 9 p.m. 739-9797 or kaimukihawaii.com.

FINAL FRIDAY • ART AFTER DARK
Art after Dark will return in January. artafterdark.org.

FRIDAYS & SATURDAYS
TWILIGHT TOURS OF THE ZOO

Stroll through the Honolulu Zoo after dark and learn what goes on when the sun goes down. All ages will enjoy this 2-hour guided walking tour including light refreshments. 5:30 – 7:30 p.m. Adults \$18, Keiki (ages 3-12) \$14, Under 2 free. 971-7195 or honolulu zoo.org.

SATURDAYS
KCC FARMERS MARKET

Fresh island produce, seafood, flowers and more are available from over two-dozen vendors at Kapiolani Community College. Free. 7:30-11 a.m. 848-2074.

SATURDAYS
KAKAAKO FARMERS MARKET

The Farmer's market held Saturdays at Ala Moana Shopping Center has moved to Kakaako in light of the construction around Sears. Check out an abundance of treats from around our islands. Their new home is at Ward Warehouse between Ward and Kamae Streets. Free. 9:00 a.m. - 1 p.m. 388-9696 or haleiwafarmersmarket.com.

SATURDAYS
TASTE OF CHINATOWN

Eat your way through our own little China as you learn where to go, what to order, and how to eat. Get cultural and gastronomic notes along the way and leave fully sated. 11:30 a.m. – 2:30 p.m. Chinatown in front of HI Nat'l Bank at Smith & King Streets. Reservations required: 391-1550.

SATURDAYS & SUNDAYS
ART ON THE ZOO FENCE

More than 35 local artists display their works on the Zoo fence on Monsarrat Avenue opposite the Kapiolani Park Bandstand. Works for sale include original paintings, prints and photographs. 9 a.m. – 4 p.m. Free. artonthezoo fence.com.

SECOND SATURDAY (NOVEMBER 9)
DOWNTOWN GALLERY WALK & CRAFT FAIR
First Friday has become such a success that events carry over to the second Saturday. HiSAM, 11 a.m. – 3 p.m. 586-0900. Other events around downtown Honolulu all afternoon. Free. 521-2903 or artsatmarks.com.

BANK OF HAWAII FREE SUNDAY
(NOVEMBER 17)

HONOLULU MUSEUM OF ART

This month's theme: Picture This: Great Khan. As always, event includes a variety of activities such as gallery hunt for his artwork and do projects related to his pictures of this islands and entertainment for the whole family in addition to regular galleries and exhibits. Honolulu Museum of Art. 11 a.m. - 5 p.m. Free. 532-8700.

NOVEMBER 1 – 3
ONI-CON HAWAII 2013

This brand new event promotes the best in Japanese pop culture. Special guests include Nobuo Uematsu, a composer of Final Fantasy fame, EMKE, guitarist Michio Okamiya, designer Atelier Pierrot, anime designer J. Michael Tatum and more. Check the website for complete list of special guests and events. Tickets: \$20 - \$45. oniconhawaii.com

**DISCOUNT HAWAII
CAR RENTAL**
SAVE UP TO 50%



GUARANTEED RESERVATIONS
NO BOOKING FEES NO
DEPOSIT *CANCEL ANYTIME
†NATIONAL RENTAL
COMPANIES

call us today @
1.800.292.1930

or check us out online:

DiscountHawaiiCarRental.com

NOVEMBER CALENDAR OF EVENTS

NOVEMBER 2 THE PACIFIC RIM JAZZ FESTIVAL

The 4th Annual Pacific Rim Jazz Festival returns for a day of music, food and drink. Performing artists include Sheila E., R & B great Bobby Caldwell, Tokyo sensation Keiko Matsui, Brian Simpson, Michael Paulo, Rene Paulo, Jimmy Borges, Ginai, Al Waterson and more. 10 restaurants will be onsite with food for sale including 3660 on the Rise, HASR and Chart House. 3 – 10 p.m. \$60 - \$130. Hawaii Convention Center pacificrimjazzfestival.com

NOVEMBER 2 & 3 11TH ANNUAL SPLENDOR OF CHINA

This is the largest annual Chinese Festival in Hawaii. Over 150 booths will be set up offering a look into Chinese history and culture through food, arts & crafts, merchandise and cultural activities such as acupuncture, martial arts, mah-jong, feng-shui, and calligraphy. Enjoy live entertainment, performances, food & cooking demos and more. Sat. 11/2 from 10 am - 9 pm; Sun 11/3 from 9 a.m. - 5 p.m. Blaisdell Exhibition Hall. Free. splendorofchina.com.

NOVEMBER 2 & 3 EMPIRE OF THE SUN

Australian electronic music duo Empire of the Sun brings their award-winning sound and tour promoting their new album "Ice on the Dune" to The Republik. All ages show. Tickets: \$39.50 GA (+\$5 at the door). 9 p.m. bampproject.com.

NOVEMBER 3 DESSERT FANTASY 2013

Indulge yourself sampling 50 of the best desserts in town while enjoying live entertainment, a silent auction and vote for your favorite dessert. Tickets: \$25, \$30 at the door. 1 – 3 p.m. Pacific Beach Hotel. ucpahi.org/events.

NOVEMBER 5 – 9 SWEET ADELINES INTERNATIONAL

More than 5,000 a cappella vocalists from around the world will converge on Oahu for the 67th annual Sweet Adelines International convention and competition. Members are women who excel in singing the distinctive musical art form of four-part harmony, barbershop style. More than 50 quartets and 40 choruses are preparing for five days of the best in barbershop harmony. Tickets \$10-\$45. Hawaii Convention Center. sweetadelineintl.org.

NOVEMBER 6 THE MIKADO

Hawaii Opera Theatre Express presents Gilbert & Sullivan's classic comic operetta in this kid-friendly public OHANA Series performance. Tickets: \$10. 7 p.m. Hawaii Theatre. 528-0506. hawaiitheatre.com

NOVEMBER 7 – 30 HAWAII'S MODERN MASTERS

Once again Luxury Row at 2100 Kalakaua partners up with Cedar Street Galleries to showcase some of the best local artists Hawaii has to offer such as the "Tita" in ceramics by Amber Aguirre seen here that will be on display at Coach. Opening festivities kick off tonight from 6 – 8 p.m. with a chance to meet the artists. Their works will be on exhibit thru December 1st. luxuryrow.com.



OAHU FRINGE FESTIVAL NOVEMBER 7 – 9

A takeoff of the original, first launched in Edinburgh, Scotland when a group of artists decided to create

their own performing arts festival back in 1947, this is the 3rd annual event in Oahu promoting emerging and professional artists hosts acts in theatre, dance, music, puppetry, belly dance, spoken word, aerial art, cabaret and more. Schedule varies per night. oahufringe.com.

NOVEMBER 8 LED ZEPPLICA

One of the best Led Zeppelin tribute bands around, and a regular in the Islands returns for one night at The Republik. 18+ only. 8 p.m. Tickets: \$20 GA (+\$5 at the door). bampproject.com.

NOVEMBER 9 HALEIWA ARTFEST

Browse the works of around 20 of our Island's local artists showcasing jewelry, ceramics, photography, fine art and more. Liliuokalani Protestant Church in Haleiwa. Their semi-annual Kalua Pig sale will also take place that day. 9 a.m. – 4 p.m. 696-6717.

**NOVEMBER 9
11TH ANNUAL CHOCOLATE EXTRAVAGANZA**
Chocoholics will get their fill at this all you can eat chocolate buffet including exotic desserts, cakes, cookies and the ever-popular chocolate fountain. Watch on-site chocolate creation and browse nearly 100 items in the silent auction. 6:30 – 9:30 p.m. Emmanuel Episcopal Church, 780 Keolu Drive. Tickets: \$25, \$30 at the door. emmanuelkailua.com.

NOVEMBER 9 RECALLING HAWAII

Watch this hula theatre performance as they chronicle the history of Hawaii from the beginning of time through music, dance and imagery. Roselie Bailey directs a diverse cast of over 60 dancers, musicians, chanters. \$25. 7 – 9 p.m. Hawaii Theatre. 528-0506. hawaiitheatre.com

NOVEMBER 11 COLOR VIBE 5K

Celebrate Veteran's Day by participating in this fun run that's been taking the country by storm. The runners themselves are the canvas as they are blasted with color at every station so be sure to wear old clothes and come out for a fun-filled healthy event. Aloha Stadium. 9 – 11 a.m. Register while space is available at thecolorvibe.com/honolulu.php.

NOVEMBER 12-23 REEF HAWAIIAN PRO

The first of the three jewels in the Vans Triple Crown will feature more than 100 of the world's top pro surfers. Alii Beach Park. The event will not take place every day, but on the four best surf days. Check website for updates: triplecrownofsurfing.com

NOVEMBER 13 MATCHBOX TWENTY IN CONCERT



Rob Thomas and Matchbox Twenty are returning to Hawaii for one-night only at Blaisdell Concert Hall. 7:30 p.m. Tickets: \$59-\$99 but with only about 2,150 seats available on that side, they were all sold out at press time. (800) 745-3000 or ticketmaster.com.

NOVEMBER 15 SLIGHTLY STOOPID

Popular California group Slightly Stoopid brings their eclectic mix of reggae, blues, rock, metal, funk and hip-hop to The Republik. All ages show. 7 p.m. Tickets: \$38 (+\$7 at the door). bampproject.com.

NOVEMBER 15 BOZ SCAGGS IN CONCERT



Get ready for an evening of timeless classics by this multi-platinum Grammy Award winner including like "It's Over," "Lowdown," and "Heart of Mine." Blaisdell Concert Hall. 8 p.m. Tickets: \$75-\$125. (800) 745-3000 or ticketmaster.com.

NOVEMBER 15 & 16 JACK JONES LIVE AT LEWERS

Jack Jones, the 'Singers Singer' kicks off Hawaii Pops Live at Lewers series where select artists will perform two performances each evening in an intimate cabaret-like atmosphere. 8 p.m. and 10 p.m. Tickets \$50-\$85. 923-2311. hawaiipops.com

NOVEMBER 16 TEDXHONOLULU 2013

In its 4th annual conference TEDxHonolulu will celebrate "Cultivating Community" by featuring speakers in technology, entertainment, art, science, and education. 10 a.m. - 5:30 p.m. \$85. Hawaii Theatre. tedxhonolulu.org.

NOVEMBER 16 MELE TREES OF LIGHT

Ala Moana Shopping Center kicks off the holiday season today with the launching of their nightly tree lighting ceremony. Sing along with your holiday favorites at 6 p.m., 6:30 p.m., 8 p.m., and 8:30 p.m. until Christmas Eve. Santa will be there daily at 10 a.m. for pictures. Center Court. alamoanacenter.com

NOVEMBER 16 DISCOVER NORTH SHORE

A new event celebrating all that we know and love about the North Shore featuring farm-to-table cuisine, fashion shows, a farmer's market, North Shore bred musicians and artists. Turtle Bay Resort. 3 – 9:30 p.m. Price TBD. discovernorthshore.com.

NOVEMBER 16 UH WARRIORS VS. SAN DIEGO STATE

The Warriors take on the San Diego State Aztecs. Kick off is at 6 p.m. Tickets: \$20 - \$40. Aloha Stadium. hawaiiathletics.com

NOVEMBER 17 SPANISH BRASS

One of the world's most dynamic brass quintets, also known as Spanish Brass Luur Metails, brings their award-winning sound to the Hawaii Theatre. 2 p.m. 528-0506. hawaiitheatre.com.

NOVEMBER 20 MUSIC OF HAWAII: DENNIS KAMAKAHI

Every third Wednesday of the month Hawaiian music lights up the Honolulu Museum of Art. This month features slack key guitarist Dennis Kamakahi. Doris Duke Theatre. Tickets: \$25-\$45. 7:30 p.m. 532-8701. HonoluluMuseum.org.

NOVEMBER 22 COSMIC GATE

German trance duo Cosmic Gate has been listed in DJ Magazine's Top 100 DJ list almost every year since 2003. Having played some of the biggest clubs in the world, they're bringing their show from the largest club on earth, Privilege Ibiza, to The Republik for what's sure to be an amazing night. All ages show. 18+. 9 p.m. Tickets: \$30 early bird, \$35 GA (+\$5 at the door). bampproject.com.

Happy
Holidays
from

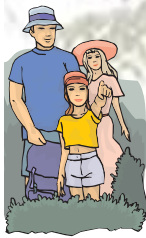
94

THE REPUBLIK

Your 1 stop shop
for all your holiday
party needs, big or
small.

Email Flash at
hello@jointherepublik.com
to book your party or private event

HIKER'S CORNER



NA ALA HELE TRAILS & ACCESS PROGRAM

For detailed information about hiking trails around the state, visit HawaiiTrails.org. The website includes an interactive map of each island and trail info that includes length, terrain, photos, directions, biking information, and printable topographic map links. Also included on the site are trail announcements, local weather, and more. This is an easy way to provide your guests with a lot of helpful information for their hiking trip (without a lot of time on your part). You can also call them directly at 973-9782.

COORDINATED HIKES: The hikes listed below are arranged by local clubs and open to visitors. Hikers are recommended to bring a snack, sunscreen, hat, sturdy shoes, insect repellent, & water.

SIERRA CLUB: Most hikes meet at 8 a.m. at the Church of the Crossroads (back porch), 2510 Bingham St. Do not leave cars in the church parking lot. Windward outings may meet at First HI Bank, Windward Mall. Requested donation is \$5 (\$1 under 15 years). Please call for information. Under 18 with adult.

HIKING HAWAII: Join a group of up to 15 hikers on a variety of guided treks. Private parties and door-to-door transportation available. Info and reservations at 855-808-4453, hiking-hawaii@yahoo.com or hikinghawaii808.com.

WAIMEA VALLEY GUIDED HIKING SERIES: Waimea Valley Family Guided Hikes are offered on Thursdays and Sundays. 5 person minimum. Reservations required in advance with credit card (cost includes admission). Keiki under 18 must be with adult. Closed-toe shoes and water required. Cameras strongly recommended! Reservations at 638-5877 or Lpool@waimeavalley.net

WAIMEA VALLEY HIKES

KALAHE'E: 9:30 a.m. – 12:30 p.m. Kalahe'e Ridge. 2 miles. Moderate. Ages 7+. \$35.

NORTH VALLEY HIKE: 9:30 a.m. – 2 p.m. Native flora and fauna. Ridge to valley. 6 miles. Strenuous. Ages 7+. \$50.

MONTHLY HIKES

NOVEMBER 2 – KAIPAPA'U MAKAI
4 Miles – Intermediate/Hillside/Hau'ula. This short spur off Kaipapa'u Trail offers a beautiful vista of the La'ie shoreline. This is a great intro hike for newbies. Meet at Iolani Palace, 8 a.m. HTMC: 674-1459

NOVEMBER 3 – PUU OHIA/TANTALUS CRATER HIKE
2 Miles - Easy/Ridge crater/Tantalus. Wet rain-forest environment with many native plants. Low light conditions. Bring mosquito repellent and raingear. Sierra Club: 429-9814

NOVEMBER 9 – MANOA CLIFF TRAIL
3 Miles – Moderate. Noted author and geographer, Dr. Mark Merlin will be along for this trail to describe a variety of native plants seen throughout the day. Spectacular views. \$10. 8:30 a.m.- 11:30 p.m. HNC. 955-0100, ext. 118.

NOVEMBER 10 – KEALIA
9 Miles – Intermediate/Graded Hillside/Mokule'ia. A series of gradual switchbacks criss-cross the face of the cliff above Dillingham Airfield, as you climb to a plateau. From there you follow a maze of dirt jeep roads. Meet at Iolani Palace, 8 a.m. HTMC: 226-0429

NOVEMBER 10 (9 a.m.) – WAILUPE VALLEY Beginner Hike. Meet at the Church of the Crossroads and learn the basics of hiking. Sierra Club: 942-0145

NOVEMBER 16 – HALAPEPE NUI
5.9 Miles – Intermediate/Ridge-Valley/Pearl City. Explore the Ko'olau foothills above Pearl City and see the native halapepe tree with its skinny trunk and sword-shaped leaves. Meet at Iolani Palace, 8 a.m. HTMC: 373-1492

NOVEMBER 16 – HONOULIULI WETLANDS
This is a rare, unique opportunity to explore Pearl Harbor National Wildlife Refuge Honouliuli Unit endangered wetland environment, made possible only under a USFWS special use permit available solely to HNC. Includes bird watching, mucking in the mud, and exploring the homes of native Hawaiian endangered wetland birds. 9:30 -11:30 a.m. \$10. HNC. 955-0100, ext. 118.

NOVEMBER 23 (8 a.m.) – KAMANANUI VALLEY HIKE
4 Miles – Beginner/Easy/Valley. Family friendly hike. Stroll into the valley and discover historic and cultural sites. Meet at the Church of the Crossroads. Sierra Club: 223-6993

NOVEMBER 24 – MAKIKI TANTALIZER
6 Miles – Intermediate/Ridge/Tantalus. Combines a combination of several trails in the Makiki-Tantalus trails to create a "complex" test of your navigational skills. Meet at Iolani Palace, 8 a.m. HTMC: 227-4572

NOVEMBER 24 – PHOTOGRAPHY HIKE
1 Mile – Easy, Palahua-Palikea. The pace of photography hikes is very slow. Resv. Req. Sierra Club: 429-9814.

NOVEMBER 30 – KALAUAO
5 Miles – Intermediate/Valley/Aiea. This popular trail through the woods leads to a pool with a waterfall, but there is no guarantee that there will be enough water to swim. Hopefuls hike in their swim suits. Save some energy for the steep climb out of the stream bed. Meet at Iolani Palace, 8 a.m. HTMC: 263-4690

For more information on hikes visit:
Hawaiian Trail & Mountain Club (HTMC)
htmcclub.org

Sierra Club
www.sierraclub.org/oahu/outings.htm

Hawaii Nature Center (HNC)
hawaiinaturecenter.org

Waimea Valley
waimeavalley.net

NOVEMBER CONT

Continued from page 15.

NOVEMBER 23 HALEIWA ARTFEST

Browse the works of around 20 of our Island's local artists showcasing jewelry, ceramics, photography, fine art and more. Liliuokalani Protestant Church in Haleiwa. 9 a.m. - 4 p.m. 696-6717.

NOVEMBER 23-24 WAIKIKI ARTFEST

Check out the work of close to 100 local artists as they display their crafts for all to see and buy. Enjoy live music and food booths while shopping. Free. 9 a.m. - 4 p.m. Kapiolani Park.

NOVEMBER 24 XTERRA TRAIL RUNNING WORLD CHAMPIONSHIP

More than 2,000 runners are expected to compete in this 21-mile half marathon through one of the most diverse, rugged and scenic terrain in the world. A 5K, 10K and adventure walk will also be offered to accommodate all levels of runners. Kualoa Ranch. xterraplanet.com. 521-4322.

NOVEMBER 24 MAKANA AT THE KAHALA

Catch slack key master Makana perform music from the 60s and the 70s as well as songs from his new album, RIPE at The Kahala Hotel & Resort. Free, but reservations suggested. Plumeria Beach House. 6 - 9 p.m. 739-8760.



NOVEMBER 25-30 VANS WORLD CUP OF SURFING

The second of the three jewels in the Vans Triple Crown holding period begins on the 25th. The event will not take place every day, but only on the four best surf days. Check website for updates. Sunset Beach. triplecrownofsurfing.com. Through December 6.

NOVEMBER 28 THANKSGIVING DAY



NOVEMBER 30 UH WARRIORS VS. ARMY

The Warriors take on the Army Black Knights. Kick off is at 6 p.m. Tickets: \$20 - \$40. Aloha Stadium. hawaiiathletics.com

DECEMBER Sneak Peek 2013

DECEMBER 5 EDDIE WOULD GO OPENING CEREMONY

The Quiksilver In Memory of Eddie Aikau kicks off the 2013-2014 window. The event only runs if and when wave face heights exceed 30 feet. The event hasn't been held since 2009. Is this the year? The window is open from December 1st - February 28, 2014. If you're on the North Shore check out the opening ceremonies that will take place at Waimea Bay between 3 - 5 p.m. quiksilver.com/eddie.

Explore Oahu's Wonders

Experience the once-in-a-lifetime adventure of our West Oahu Eco-Tours

Our mission is to leave the ocean a better place than when we arrived it.

Stand Up Paddleboarding
Kayak

- Small Groups
- Rentals
- Personal Service
- Tours

Call 729-2229
www.westoahusup.com

WEST OAHU SUP

Legends IN CONCERT Waikiki

ROCK-a-HULA!

Your guests will love our newest cast member... Britney!

Six Packages from \$59

"Elvis" "Madonna" "Michael Jackson" "Britney Spears"

At Royal Hawaiian Center, Bldg. B, 4th Floor
www.LegendsWaikiki.com Reservations: (808) 629-SHOW (7469)

That's Entertainment

HOTELS

- HALE KOA HOTEL** 955-0555
 •TuSat - High and Right Comedy Show takes the stage at the Warriors Lounge at 8pm.
 •MThFS - Poolside music at the Barefoot Bar. 6-11pm
- HALEKULANI HOTEL** 923-2311
 •Daily-Hawaiian Music and hula at The House Without A Key from 5:30-8:30pm.
 •Daily-Live Contemporary and light Jazz at Lewers Lounge from 8:30pm to midnite.
 •Sun- Sunday brunch at Orchids features Noly Paa on the piano from 9:30 - 2:30pm.
- HILTON HAWAIIAN VILLAGE** 949-4321
 •TuesFri - Fireworks at 7:45pm.
 •Fri - The Rockin' Hawaiian Rainbow Revue (formerly the King's Jubilee), a musical salute to King Kalakaua, at the Super Pool. 7 pm.
 •FriSat - Olomana at the Tapa Bar from 8-11pm.
 •Sun - Jeff Apaka at the Tapa Bar from 5-7pm.
 •Daily - Live entertainment at the Hau Tree Bar and the Tapa Bar from 8-11pm.
- THE KAHALA HOTEL** 739-8888
 •TuWThFSat- David Swanson vocalizes on the piano at The Veranda from 7:30-11pm. Live Jazz on Mondays.
- MOANA SURFRIDER** 922-3111
 •Daily-Hawaiian music & hula. The Banyan Court, 6-8 pm, and again from 8 -11 p.m. Weekends from 11:30- 2 p.m.
 •MWFri-Guided historical tours at 11am.
- NEW OTANI KAIMANA BEACH** 923-1555
 •FSat- Local jazz guitarists plays live in the Sunset Lanai Bar. 6-9pm.
- OUTRIGGER WAIKIKI ON THE BEACH** 923-0711
 •Mon- Kukui Nut Bracelet Making. 1pm.
 •Th- Ukulele Lessons. 1pm.
 •Fri- Aloha Fridays bring back old Hawai'i with music, hula, ukulele & lei making lessons. 9am-1pm.
- OUTRIGGER REEF ON THE BEACH** 923-3111
 •Daily- See guest artists at work in Kuloko Arts of Hawaii 9am-1pm and again from 6-9pm.
- SHERATON PRINCESS KAIULANI** 922-5811
 •Daily-Live Hawaiian music & halau at the lounge from 6-8:30pm, then poolside from 8:30-10:30pm.
 •MWFri-Princess Kaiulani historical tour at 4pm.
- THE ROYAL HAWAIIAN** 923-7311
 •TThSat- Free guided resort tour at 2pm.
 Fri-Princess Kaiulani historical tour at 4pm.
- TURTLE BAY RESORT** 293-6300
 •MTWThFSat- Lei Making, Main Lobby at 10am.

- ThSun - Fire Dancer, Hang Ten Pool Bar at Sunset
 •TThFri - Shell Hula Lessons, Lobby at 10am
 •TThFri - Ukulele Lessons, Lobby at 9am
 •Fri- Music & Hula. Lobby Lounge 6:30-8:30pm.
- WAIKIKI BEACH MARRIOTT RESORT** 922-6611
 •Daily-Hawaiian entertainment in The Moana Terrace Bar. 6-9pm.
 •Fri-Local crafters "Aloha Friday Fair" Lobby 9a-2pm

MUSEUMS

- HAWAII STATE ART MUSEUM** 586-0900
 •TWThFSat - Inaugural exhibition "Enriched by Diversity: The Art of Hawai'i." Free. Tuesday-Saturday, 10 a.m. to 4 p.m. Located in the Capital District.
- HAWAII THEATRE** 528-0506
 •Tues- A one-hour guided tour. The Theatre is undergoing renovations from July 1st through August 15th. There will be no tours available during renovations.
- HONOLULU MUSEUM OF ART** 532-8726
 •MWF- Japanese Language Tours. Private tours also available. 1pm. Regular admission.
- IOLANI PALACE** 522-0832
 •Mon-Sat-45 minutes docent-led or self-guided audio tours available in English or Japanese. Japanese-led tour is available only at 11:30 a.m. All tours include re-tour video and entrance into the Palace Galleries. Adults: \$14.75-\$21.75 / Keiki (5-12): \$6. 9am-5pm
 •Sat-Hawaiian Quilt Classes. Old Archives 9:30a-12p.
- LUCORAL MUSEUM** 922-5381
 •TTh- Learn how to plan your jewelry project and more in this beaded jewelry workshop \$10. 2-4 p.m.
- MISSION HOUSES MUSEUM** 447-3910
 •Tue-Sat-Learn about the dramatic story of cultural change in 19th-century Hawai'i. Docents lead tours through the oldest existing frame house in the Islands, Printing Office, and the coral block Chamberlain House. Reservations required. www.missionhouses.org
- PACIFIC AVIATION MUSEUM** 441-1000
 •Daily-Vintage aircraft in battlefield hangars. Combat flight simulators. Aviator's Tour takes you through the new Restoration Hangar. Restaurant, Museum Store. Shuttle & Tickets at USS Arizona Memorial Visitor Center or at www.PacificAviationMuseum.org.
- THE SPALDING HOUSE** 526-1322
 •Daily-Docent-led tours given daily. 1:30pm. Garden tours or Japanese language tours are by appointment.
- NAVAL AIR MUSEUM BARBERS POINT** 682-3982
 •Mon-Fri- A unique museum experience about aviation history in Hawaii. All of the aircraft are open to climb in, on and around. Tours: 8 a.m. - 4:30 p.m. \$7 / \$5 children under 18. BLDG 1792, Midway Road,

Kalaeloa Airport. Reservations required. Sat/Sun by appt only. www.nambp.org.

SHOPPING CENTERS

- ALA MOANA CENTERSTAGE** 955-9517
 •Tues - PCC Polynesian Revue Show. 6pm.
 •Sun - Keiki Hula Show. 10-11am.
- INTERNATIONAL MARKET PLACE** 971-2080
 •Daily except Sunday - Free Food Court Entertainment starting at 6pm.
- KING'S VILLAGE** www.kings-village.com 237-6344
 •MW Famer's Market offering fresh produce, baked goods and local food items from 4-9pm.
 •Daily Watch the changing of the guard put away the Hawaiian flag each evening with a rifle drill exhibition at the front entrance of the Village. 6:15 p.m. FREE.
 •Daily King's Guard Museum features a variety of collectibles and memorabilia. 10a-10:30p. FREE.
- ROYAL HAWAIIAN CENTER** 922-2299
 •TWThF - Ukelele lessons 10-11am, *Paina Lanai*
 •MW- Learn lomilomi 11am-12pm, Bldg. A, 1st floor
 •TTh-Hula (T) 11am-12pm (Th) 4-5pm, Bldg C. 2nd floor
 •TWThF- Live Hawaiian music 6-7pm, *Royal Grove*
 •MTWThSat- Lei making 1-2pm, Bldg A., 1st floor
 •Sat- Hula Kahiko 6-6:30pm, *Royal Grove*
 •Sat- Hawaiian musicians 7:30-8:30pm, *Royal Grove*
 •ThSat - PCC Performs. 11-11:45am, *Royal Grove*
- WAIKIKI BEACH WALK** www.waikikibeachwalk.com
 •Tuesdays - Ku Ha'aeo featuring Hawaiian song and dance on the Plaza stage. 4:30-6pm
 •Wednesdays - Yoga Classes 4-4:45pm. Free.Plaza Stage
- WAIKIKI SHOPPING PLAZA** 923-1191
 •Daily Hula Lessons. 10am, 12pm
 •MTTh - Polynesian Review 1st & 3rd floor 7-9pm

ATTRACTIONS

- KALAKAUA AVENUE** 527-5666
 •Fri - Strolling Hula from 8-10:00pm.
- KAPI'OLANI BANDSTAND** 527-5666
 •Fri-Hawai'i's finest musicians perform. 5:30-6:30pm
 •Sun-Royal Hawaiian Band performs 2-3:15pm.
- KUHIO BEACH HULA SHOW** 843-8002
 •TThSatSun- City & County presents a free hula show at sunset. 6 - 7pm at the hula mound. (No show 11/28)
- TAMARIND PARK - DOWNTOWN** 527-5666
 •Fri- Mayor's Aloha Friday Music from 12-1pm features live music from Hawaiian to Jazz to Pop.
- WAIKIKI TOWN CENTER** 922-2724
 •Mon-Sat-The songs and dances of Hawai'i, New Zealand, & Tahiti. Free shows begin at 7pm.

EVENTS SUBJECT TO CHANGE PLEASE CALL TO CONFIRM PRIOR TO ATTENDING

PAPARAZZI

Celebrity in the House



Rachel McAdams famously known for the leading lady role in *The Notebook* visited the Outrigger Waikiki for dinner at the Hula Grill while on Oahu filming with Bradley Cooper. Front desk GSA Alex dela Cruz got a picture with her.

Helping to keep Hawai'i clean



Volunteering for a beach clean up in Ewa Beach are Antoine Garandeanu, Concierge at Trump Hotels Waikiki; Janyce Imoto, Cultural Greeter and Wako Mimura and John Delos Reyes, both Concierge at the Aulani, a Disney Resort & Spa

Do you have a picture you would like us to run? Send them to: publisher@oahuconciierge.com

Waikiki Aquarium fundraiser



Dr. Andrew Rossiter, Director of the Waikiki Aquarium shown here with Jill Gilboj, Senior Sales & Marketing Manager of Hard Rock Cafe at a recent fundraiser held at the restaurant on behalf of the Aquarium,

November 30, 2013

Dole Plantation - 1 FREE Adult Admission To The Maze With Purchase of 1 Adult Admission. 621-8408

Giovanni Pastrami - 15% Off Full Bar, Dine-in or Take-Out at anytime with ID. 227 Lewers St. 923-2100.

Hard Rock Café - 15% off food, beverage (non-alcoholic), or merchandise. Hotel ID required. 280 Beachwalk Ave. 955-7383.

Hawai'i Prince Golf Club - \$5 Off Standard Kamaaina Green Fees. Tee Times: 944-4567

Hilo Hattie - 25% on Hilo Hattie labeled garments, 15% off other fashions/gifts and 10% off Hilo Hattie labeled foods. Not valid on sale item. Ala Moana Center and Nimitz Hwy Ph 535-6500.

Hy's Steakhouse - 25% VIP Discount Off Food And Beverage (up to 2 persons) 2440 Kuhio Ave. 922-5555

***Hyatt Regency Waikiki** - 15% discount with the presentation of a concierge business card at SHOR, Japengo and SWIM. 2424 Kalakaua Ave. 923-1234.

Iolani Palace - Free Admission. Regular rate \$20. 364 S. King Street, Reservations & Hotel ID required. 522-0832.

IHOP - Receive 20% on entire bill. Must show valid hotel ID. Not valid with any other offer or discount. Aqua Palms, 1850 Ala Moana Blvd restaurant only. Free parking available. 949-4467.

Kaiwa - 20% off food & beverage between 5 & 7 p.m. 924-1555

Longhi's - 25% off food & beverage up to 2 persons, not applicable with any other promotion or discount. 947-9899.

Mission Houses Museum - Free tour with hotel ID. 447-3910

Pacific International Skydiving Center - 50% Discount on Jump, 68-760 Farrington Hwy, 637-7472

Plaza Café - 15% off all food items. Best Western the Plaza Hotel. 3253 N Nimitz Highway. 836-3636.

P.F. Chang's Waikiki - Receive 20% on all appetizers, entrees, desserts and beverages 11 am - 5 pm daily (not valid for Pau Hana menu) Royal Hawaiian Center. Ph: 628-6760, 637-7472

Romano's Macaroni Grill - 20% Off Food and Beverage for up to 2 guests. (Not Valid for Happy Hour Menu). Ala Moana Center, 1450 Ala Moana Blvd. 356-8300

Royal Hawaiian Center - get your FREE Malama Card which offers special retail and dining discounts to local Waikiki workers. Royal Hawaiian Center, 2201 Kalakaua. 922-2299.

Ruth's Chris Steak House - 20% Off Food and Beverage for up to 2 guests. (Not Valid for Happy Hour & Prime Time menus). Restaurant Row, 500 Ala Moana Blvd. 599-3860. Waikiki Beach Walk, 226 Lewers Street. 440-7910

The Contemporary Museum - FREE Admission For Cardholder and One Guest. 526-1322

***The Deck** - 25% off all cocktails on Sundays from 11 a.m. to close. for all hotel industry employees at the new poolside bar at The Queen Kapiolani Hotel. 150 Kapahulu Ave. Must show hotel ID. 931-3325.

The Kahala Resort - Complimentary appetizers for a concierge and a guest with the presentation of a concierge business card at Hoku's, Plumeria Beach House, Seaside Grill, The Veranda. 5000 Kahala Avenue. 739-8888

The Original Glider Rides - Come experience the joy of soaring for yourself. Concierge / GSA may receive a complimentary scenic ride. Request the "GSA flight special" when booking your reservation. Hotel ID required. Dillingham Airfield. 637-0207

Tiki's Grill & Bar - FREE order of Prime Rib Poke with any purchase! One per table. OahuconPOKE. ASTON Waikiki Beach. 923-8454

Willoughby's Restaurant - 15% off all food items. Ohana Honolulu Airport Hotel. 3401 N. Nimitz Hwy. 836-0661.

You may be required to provide identification. One special per person per business. Offers valid on regular-priced merchandise only. Discounts are available to Guest Service Professionals ONLY. Not valid with other promotions or special offers. A minimum 15% gratuity required for all special food offers. *New offer

Activity Concierge of the Month



NAME: Ingrid Noda
COMPANY: The Tour and Activity Company
TITLE: Tour and Activity Concierge

Q. How long have you been at the Sheraton Waikiki?
 A. 10 Years

Q. How big is your team there?
 A. We have a team of 14 awesome people!

Q. How did you come to work in this industry?
 A. Previously I was with Cheap Tickets in reservations and customer service. Some people might remember that little kiosk on the corner of Atkinson and Kapiolani Blvd. I never had to work in there, thank goodness! Our offices were in the Pacific Guardian building. When Cheap Tickets decided to do business online and close their offices here I applied at Starwood Hotels and began working at Sheraton Waikiki.

Q. What do you think makes your desk unique?
 A. Our desk is unique because we provide concierge services as well as sell tours and activities. We are able to service the guests full circle, from their arrival transportation to booking their tours on Oahu, their outer island trips, and also their dinner reservations and any other need they might have to take care of.

Q. What is the biggest perk of being in this industry?
 A. Being able to attend so many social events and grand openings. You've been so instrumental in making the venues known to [us]. They are so lucky that you have so much energy and skills to bring us together. The best way to be able to do our job is with first-hand experience. Not to mention being able to network with other concierge and tour professionals that we meet at these events.

Q. What's been your biggest challenge at the desk?
 A. The biggest challenge is always the guest. Everything else is like clockwork, but you never know what the next guest is going to bring on.

Q. What do you think is the one skill that a good concierge has to have to succeed?
 A. If I had to pick just one it would have to be patience. If you have patience you'll be able to listen, think, and produce a good result.

Q. Have you had any memorable guests?
 A. I've had many! That's one of the things I love about my job. There are so many unique and special people in this world and they come right to my desk! One of my unique guests was a scruffy middle aged man who came on vacation with his sisters and tried to ask me out. He showed me his blue toenail polish, thinking that would surely make me say yes. OMG! Special guests are without a doubt our Make A Wish families. It's very special to have an opportunity to be a part of giving these families good memories and a fun vacation. I'm really proud of Sheraton for being a sponsor of Make A Wish Foundation.

Q. What is your favorite off-property restaurant to recommend?
 A. That's a hard choice. I think Ocean House because it has something for everyone on the menu plus good service and location.

Q. What's on your 'must-do' list of suggestions?
 A. When people ask for the 'must-dos' I have to say Pearl Harbor, climb Diamond Head, snorkel at Hanauma Bay, and attend a luau.

Q. If a guest could only do one activity, what would you recommend?
 A. I would probably have to suggest a circle island or at least a partial island tour. They really need to see the island aside from Waikiki.

Everyone remembers their first kiss



DOLPHIN QUEST
 Oahu

Programs starting at \$125 per Person!

Enjoy intimate, personalized, hands-on dolphin fun during the \$125 Dolphin Experience! Reserve your program now.

Call: 800.248.3316 or Visit: DolphinQuest.com

A portion of the proceeds from Dolphin Quest supports the Make A Wish Foundation. Reservations and cancellations.

The Oahu Concierge is printed monthly and direct mailed FREE to all Oahu Concierge, Hospitality & Activity Professionals.

Subscriptions available to non-industry at \$20 per year.

C O N T A C T

Davis Media

Ph: 596-4422 • Fax: 593-0839

www.oahuconciierge.com

Twitter: @OahuConciierge

Facebook: www.facebook.com/OahuConciierge

ADDRESS & NAME CHANGES / ADDITIONS

We do not take changes by telephone. All changes to mailing list must be submitted in writing by the 16th of the month, email is preferred.

S T A F F

PUBLISHER **Pam Davis**
publisher@oahuconciierge.com

CONTRIBUTING EDITORS
Lynn Cook, Lance Rae

DESIGN
Coreiya Design

The Oahu Concierge
1221 Kapiolani Boulevard, Suite 1040
Honolulu, Hawaii 96814

Presorted Std
US Postage Paid
Honolulu, HI
Permit # 583

CIRQUE *meets* POLYNESIA in WAIKIKI

ALOHA

LIVE

SHOW AND FEAST

ONE PART LUAU ONE PART CIRQUE TWO PARTS FUN

QUEEN KAPIOLANI HOTEL

5pm Seating • 6pm Feast & Show

Send your
VALUED
GUESTS
— to —
WAIKIKI'S
NEWEST
SPECTACLE

GREAT FOOD
GREAT SHOW
GREAT FUN

Call
808.931.3328
or visit
ALOHALIVESHOW.COM