

FOOTIEGOALS

8' X 6' GRASS SURFACE - SECTIONAL CROSSBAR



www.itsagoal.co.uk

TEL: 0114 24 24 244

SPARE PARTS

COMPONENTS

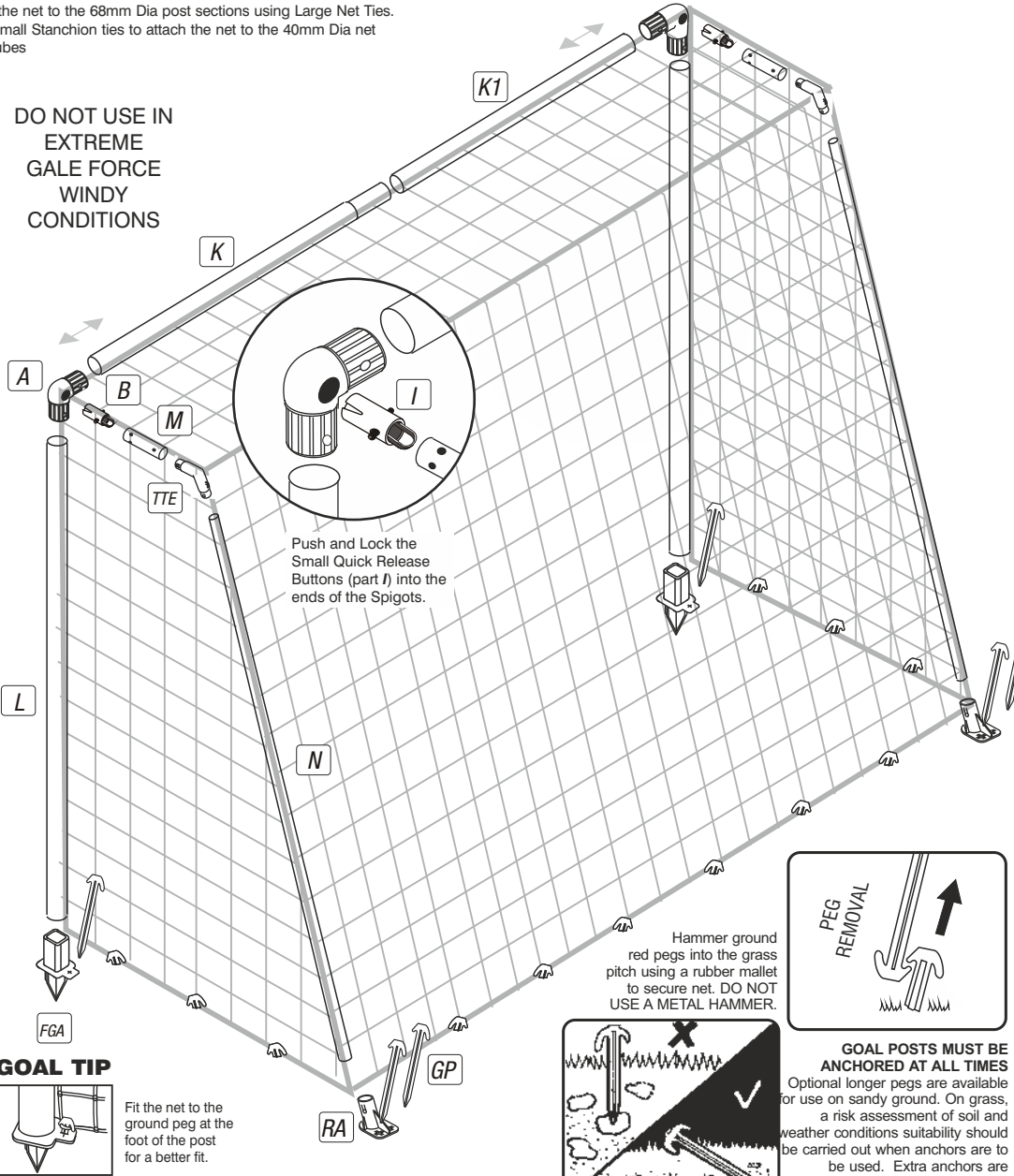
A	CORNER BRACKET	x2	
B	SPIGOT	x2	
FGA	FRONT GROUND ANCHOR	x2	
RA	REAR GROUND ANCHOR	x2	
GP	GROUND PEG	x22	
TTE	TOP TUBE ELBOW	x2	
I	SMALL QUICK RELEASE BUTTON	x2	
NT	NET TIE	x20	
ST	SMALL STANCHION NET TIE	x14	
NET	GOAL NET	x1	

ANCHOR YOUR GOAL POSTS & TIE NETS TO ALL FRAMES



During a game the goal posts must have the ground anchors inserted as shown below, in order to fully hold the goal post ground sections together. The Crossbar connects into the upright posts with the corner brackets (A). It is important to fix the goal net to the larger posts with the Large Net Ties (NT). Use the Small Stanchion ties (ST) to attached the nets tightly to the net supports as indicated. See over for other helpful hints on assembly.

Attached the net to the 68mm Dia post sections using Large Net Ties. Use the Small Stanchion ties to attach the net to the 40mm Dia net support tubes

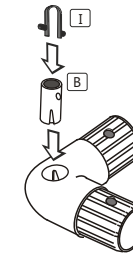


FITTING INSTRUCTIONS STEP BY STEP ASSEMBLY

For easier assembly use a rubber mallet and also spray furniture polish inside posts. Do not use a metal hammer. Do not apply grease or vaseline

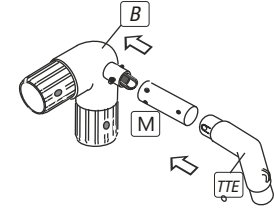
STEP 1

Lay out all Posts and check component list.



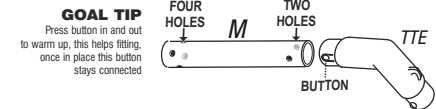
STEP 2

Insert Spigots B. into the corner brackets and insert the small quick release button I into the Spigots.



STEP 3

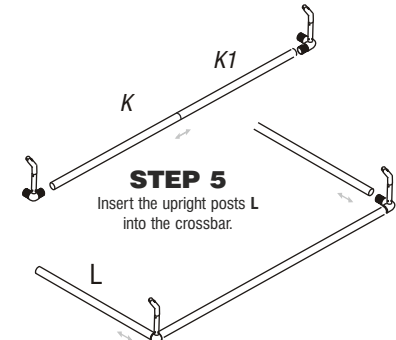
Insert Top tube M. into the Corner Brackets with spigot, locking into the small quick release button. Insert the Top Tube Elbow TTE into the Top Tube



NOTE : Ensure that the two holes of the stanchion are parallel to the buttons of the Top Tube Elbow before connecting.

STEP 4

Connect K to K1 and insert the Corner Brackets with Top Tubes and Top Tube Elbows attached as shown in step 3.

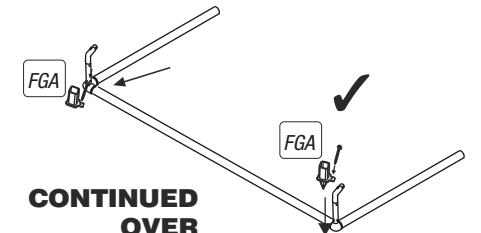


STEP 5

Insert the upright posts L into the crossbar.

STEP 6

With the crossbar laid on the floor insert the Front Ground Anchors FGA as shown, this will provide the correct distance between the posts for the anchors to be inserted.



CONTINUED OVER

POST SECTIONS

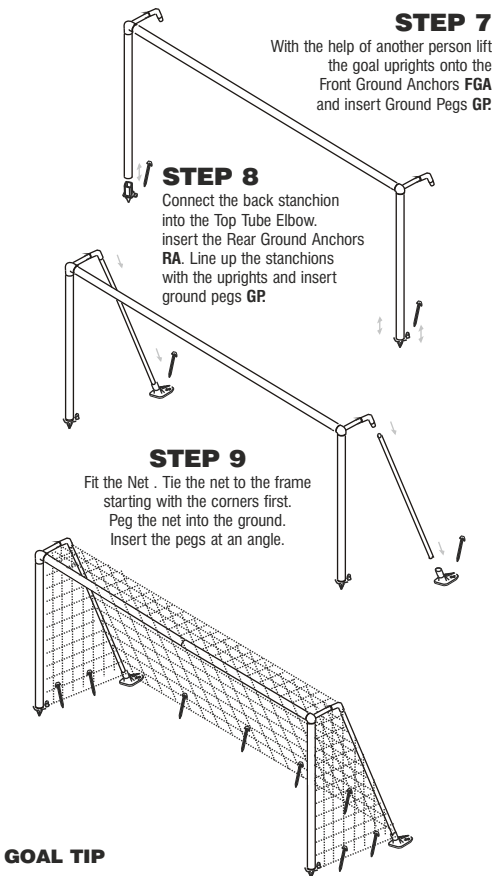
K	CROSSBAR SECTION -with insert 68mm Diameter	x1	
K1	CROSSBAR SECTION - without insert 8mm Diameter	x1	
L	UPRIGHT SECTION 1726mm LONG - 68mm Diameter	x2	
M	TOP STANCHION TUBE 400mm LONG - 40mm Diameter	x2	
N	BACK STANCHION TUBE 1896mm LONG - 40mm Diameter	x2	

SPARE PARTS AND NETS ARE AVAILABLE
TEL 0114 242 4244 www.itsagoal.co.uk

WE RESERVE THE RIGHTS TO AMEND THE SPECIFICATIONS OF OUR SOCCER PRODUCTS IN THE INTEREST OF CONTINUED DEVELOPMENT.
YOUR PRODUCT THEREFORE MAY DIFFER LIGHTLY TO THOSE ILLUSTRATED. E&OE
WORLDWIDE © COPYRIGHT 2001 ITSA GOAL POSTS LTD,
ALL RIGHTS RESERVED A REGISTERED DESIGN

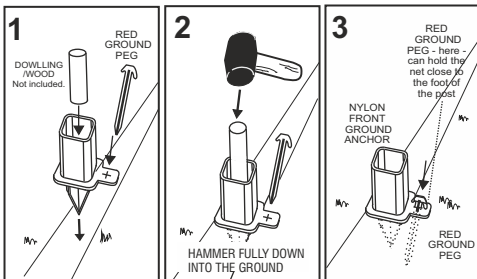
Guarantee
REGISTER YOUR GUARANTEE

To register for your one year guarantee please visit our web page www.footiegoals.com and scroll to the bottom of the page and click on the link 'Guarantee' and follow the instructions. Thank you.

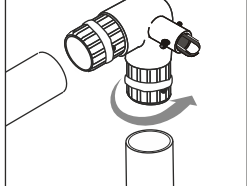


GOAL TIP

If the ground is really hard we recommend adding water to the ground to soften. Also use a wooden block or dowling to help insert your anchors into the turf. **ALWAYS** Use a rubber mallet not a metal hammer.



GOAL TIP



On this Budget Footie Goal the locking buttons are not included except for the net support stanchions. The corners of the goals can be made to be a tight fit by wrapping masking tape (not included) around the connectors that push into the posts. The more you apply the tighter the fit. Wrap around the twist the corner fitting onto the corner bracket. We recommend this if you are moving the goal around and do not take the goal down after each game.

NET TIES : Place the small stanchion net ties on the net support stanchions. This will help extend the life of your net and keep the frame tightly fitted together. Apply the larger ties to the ground frame and the posts. We recommend placing the net ties no more than 340mm apart. The net ties supplied are designed to permanently fix the net to the goal frame. If you require to take nets on and off, other net fixings can be used.

NOTE: Goal must be anchored otherwise breakages may occur. In extreme conditions it is advised to store away. The best way to store your goal is to remove crossbar and rear back bar section leaving the net attached to the side frames. If you do this regularly then it is advisable to buy optional removable net ties. The goals are ideal when left with nets attached, for example in a garden. You must anchor your goals.

At the end of the season nets can be tied into a bundle and placed into a pillow case (not to damage washing machine) and washed at 40 C0 with normal washing powder. The ground frame can be washed with hot soapy water. Any scuff marks on posts can be rubbed off with a light abrasive scouring pad.

WARNING: Check the position of any underground services before using the ground anchors and pegs. We take no responsibility for any damage or injury caused in this manner.

NEVER use the goals without the ground anchor system. In severe weather or windy conditions it is advisable to take your goal down as damage is not covered by the guarantee in such circumstances.

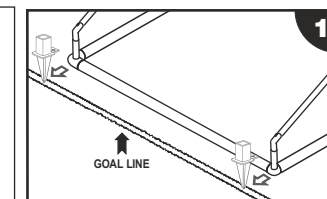
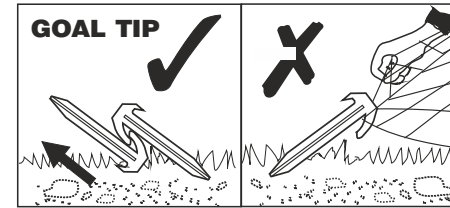
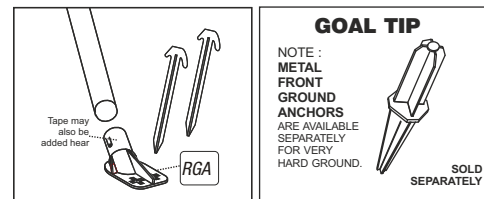
If you find the nets are worn along the floor it may be rodents, by spreading pepper along the base frame rodents will be deterred. It is advisable in any contact sport to take out the relevant insurance's to cover against injury both from taking part, equipment and other unforeseeable circumstances. Crossbars will not be replaced within the guarantee period if broken by swinging or climbing or any other misuse.

DO NOT try to glue any damaged fixings. Plastic materials in this product vary and this may cause the plastic to break. Always replace any damaged components.

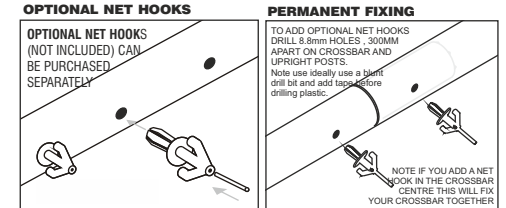
NOTE : All plastic extrusions vary and therefore some tubes may be looser or tighter to connector fittings. If you want to increase the diameter of the fitting just wrap masking tape around the part that fits into the tube, twist as you insert the fitting and it will grab to the tube tight. You can make tighter fits by adding more tape.

We advise adult supervision during assembly and use. Observe and follow warning labels attached to goal. Do not use any components, nets or parts if they are damaged or broken. Spare parts and replacement nets are readily available. If others are to install your goal you should show them how to erect and dismantle the goal and hand them a copy of the fitting instruction. If you lose your instructions copies can be attained from our company website. To avoid damage when dismantling the goal follow these guidelines: it is advisable in extreme windy conditions to dismantle the goal and store away. Do not drop any heavy objects on ends of tubes. When dismantling the goal ensure that all fittings are packed away and that none are left on the playing surface. Warning goals must never be left up or used unless they are properly fitted with ground anchors with net attached and securely pegged down.

HARD surfaces: to prevent damage to goal or it's components, loosen soil with a steel pole and moisten with some water before inserting the ground anchors and pegs. Do not use the goal in sub zero temperatures. warning labels should be replaced when worn and we recommend replacing them every two years - spare labels available. Damaged components requested under guarantee must be returned for inspection. Failure to follow the warnings, fitting instructions contained in this document, may invalidate your guarantee. The company, its agents and representatives do not accept any product liability if used outside the EU. Use of the product in other countries outside the EU including the USA is not covered and appropriate insurance should be taken out by the user to cover for any eventuality. We reserve the rights to amend the specifications of our soccer products in the interest of continued development. Your product therefore may differ slightly to those illustrated. Not suitable for children under 36 months until assembled due to small parts..



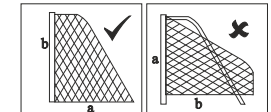
1 Lay the Crossbar Section along the goal line to give you the correct position to insert the Front Ground Anchors and the distance between them (steps 1-2).



STEP BY STEP NET FITTING

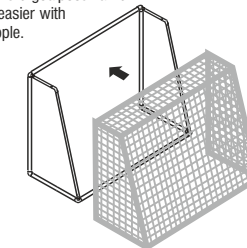
STEP 1

Open net and check the lengths of a and b correspond with the diagram below.



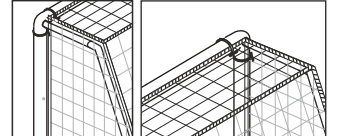
STEP 2

With the net the correct way round lift the net onto the goalpost frame. This is easier with two people.



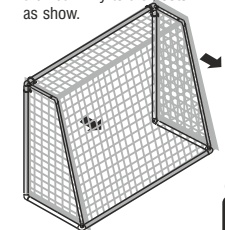
STEP 3

Attach the corners first, where the upright posts meets the crossbar as shown.



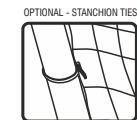
STEP 4

Using the large net ties tie the net to each remaining corner of the goal frame and use the remaining net ties to tie the net firmly to the posts as show.



STEP 5

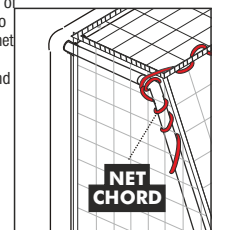
Using the small net ties attach the net down the back of the sloping back net supports as shown to the posts as shown.



STEP 6

NET CORD - ROOF TO THE NET

To help define the roof of the net Tie the cord to one side and pull the net chord tight and wrap neatly down and around the stanchion section. If you are regularly attaching or detaching the net then apply coloured tape to the roof corners of net to help identify the roof area.



NOTE

For goals without bases peg the net down directly into the grass, angle your pegs at 45 degrees and always use a rubber mallet.

SPARE PARTS AND NETS ARE AVAILABLE

WE RESERVE THE RIGHTS TO AMEND THE SPECIFICATIONS OF OUR SOCCER PRODUCTS IN THE INTEREST OF CONTINUED DEVELOPMENT. YOUR PRODUCT THEREFORE MAY DIFFER LIGHTLY TO THOSE ILLUSTRATED. E&OE WORLDWIDE © COPYRIGHT 2001 ITSA GOAL POSTS LTD. ALL RIGHTS RESERVED A REGISTERED DESIGN

