

CAMPO

Villa Campo is a contemporary, minimalist design with a strong personality. Spacious rooms laid out on a single floor to create an imposing space extending the utmost in habitability and accessibility.

STUNNING SUNSETS FROM THE SOLARIUM

Its architectural profile, with simple but expressive lines, makes space on the roof for the solar panels that power this home for reduced energy impact and sustainability. The entire roof of Villa Campo is a magnificent solarium measuring almost 145 square metres. It affords

spectacular views of the golf course, surrounding mountains and the countryside that disappears into the distance. Stunning sunsets over the horizon will delight your senses as you watch from the immense terrace atop the villa.

CAMPO



CAMPO

FEEL THE SPACE ABOVE

Now inside, Villa Campo has 195 square metres of living space on a single floor overlooking the pool, on the edge of the golf course. High ceilings create a vertical space full of light and space, giving a pleasant air of relaxation and freedom. The sloping roof over a sliding window, allows light to flow into the property, which feels open to the sky.

CAMPO

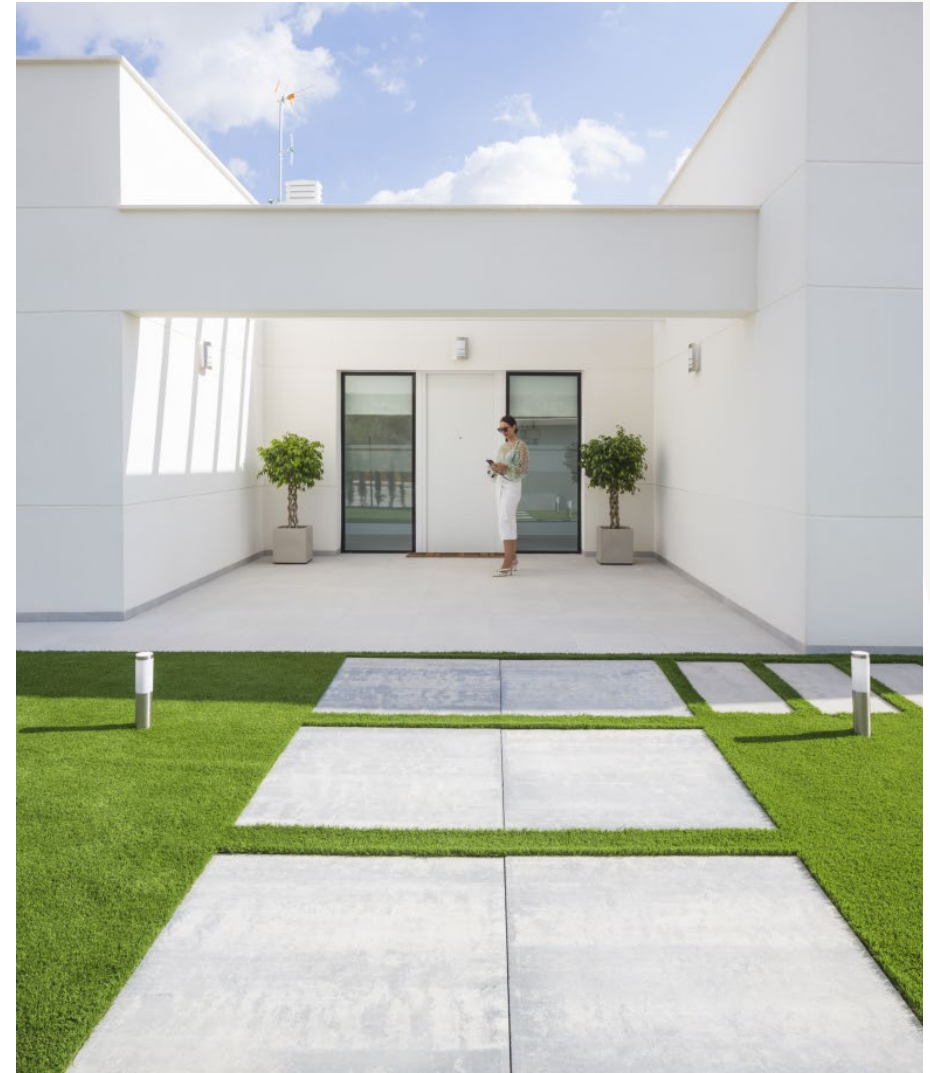


An open plan kitchen makes this a comfortable space where you can enjoy the views and socialise with your friends and family while you are cooking.

CAMPO

From the living room, the central area of the house, gives direct access to the four bedrooms, each of which has windows through which to admire the garden or views. The materials used inside reflect the light. These include large-scale tiles that create smooth, majestic surfaces. Infinite windows make the property feel at one with its surroundings, with landscape and interior design living in perfect

harmony. In short, a beautifully designed villa with proportions and spaces focused on the wellbeing of its occupants, where comfort and convenience underlie its contemporary, exquisite aesthetic.



CAMPO



GROUND FLOOR

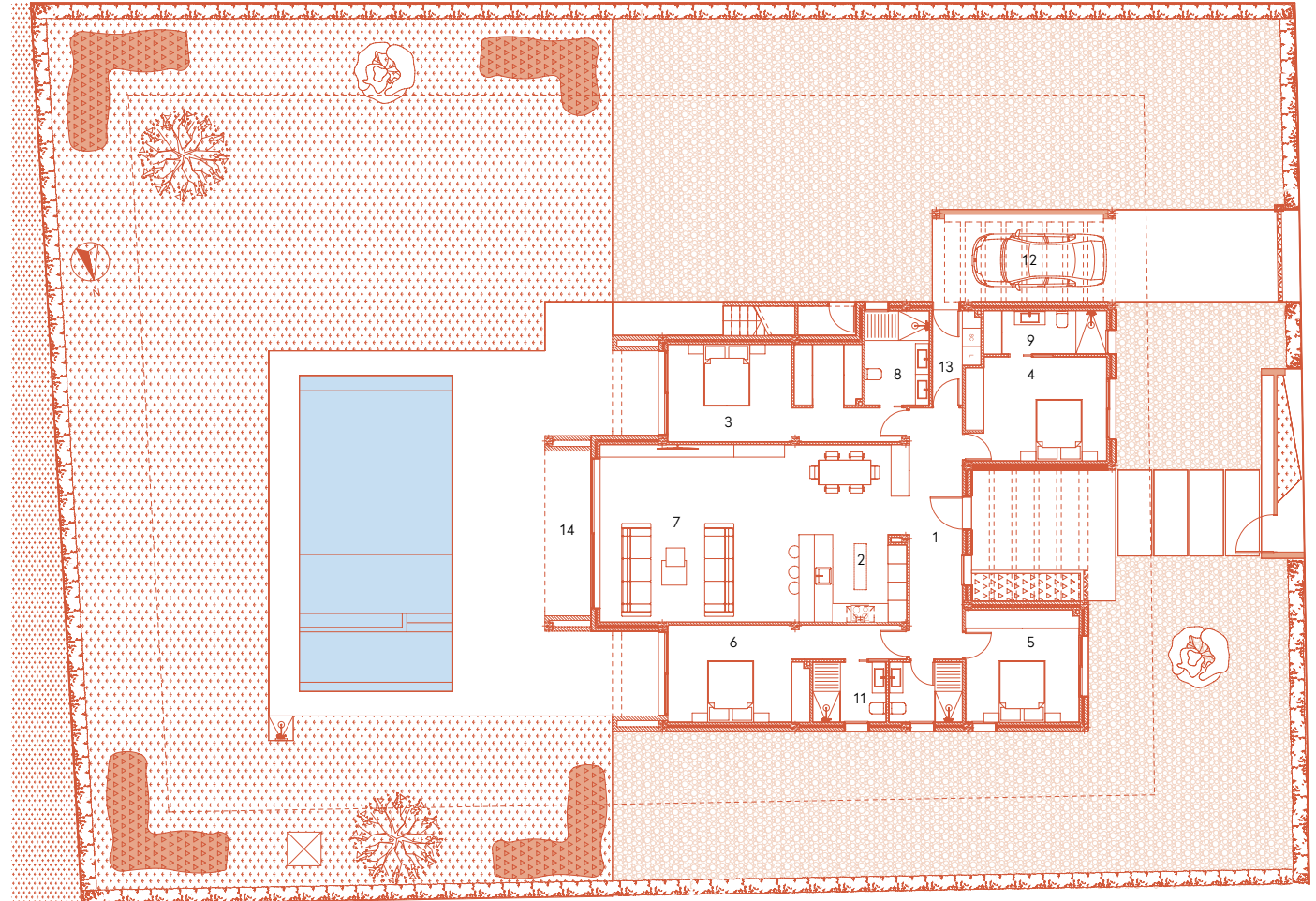
CAMPO



FEATURES

FLOOR AREA

1 HALL	14,09 m ²
2 KITCHEN	8,34 m ²
3 BEDROOM 1	17,05 m ²
4 BEDROOM 2	15,35 m ²
5 BEDROOM 3	13,60 m ²
6 BEDROOM 4	18,12 m ²
7 LIVING & DINNING ROOM	49,35 m ²
8 BATHROOM 1	6,49 m ²
9 BATHROOM 2	5,83 m ²
10 BATHROOM 3	4,73 m ²
11 BATHROOM 4	4,73 m ²
12 GARAGE	16,14 m ²
13 LAUNDRY	4,10 m ²
14 COVERED TERRACE 1	8,06 m ²
15 OPEN TERRACE	141,39 m ²
TOTAL GROUND FLOOR	425,91 m²



FIRST FLOOR

1

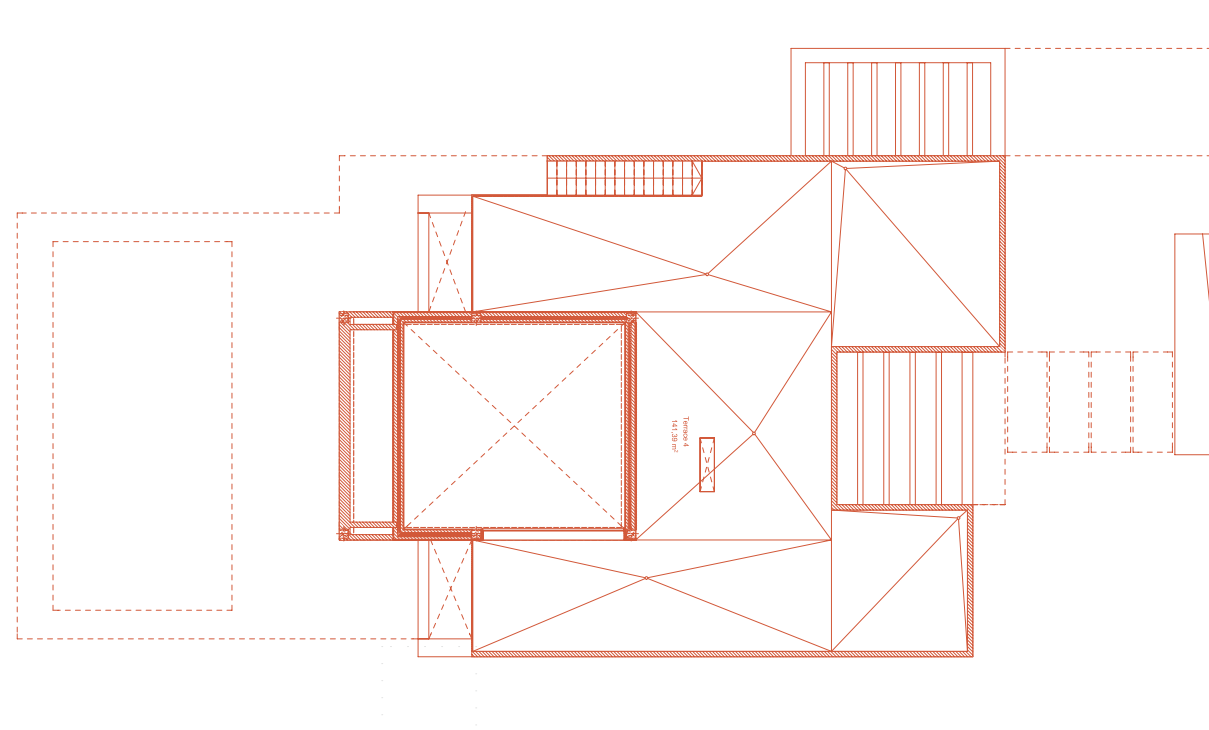
FEATURES

FLOOR AREA

SOLARIUM

141,39 m²

CAMPO



ALTAONA

GOLF AND
COUNTRY
VILLAGE