

The chance to blur the boundaries.

# HORIZON



The first of the villas at Altaona Golf and Country Village balance the horizon that surrounds them. They stand on tip-toe on the first floor to show the golf course, approaching it with a minimalist perspective. The feeling of freedom abounds in all its rooms, as well as from its gardens.

HORIZON

# THE LIMITLESS INDOORS

Horizon has an overlook-style structure that rises above the pool and faces the golf courses. Its interiors make resting the most precious moment of the day.



# OUTDOORS BY THE RISING SUN

Its upper terrace, flanked by bamboo, is an ideal place to lie in the shade and gives privacy to the bathing area, which is surrounded by the leafy garden.



# HORIZON





HORIZON



# FEATURES

HORIZON

---

## FIRST FLOOR

---

1	BEDROOMS	2
	BATHROOMS	2

---

## GROUND FLOOR

---

0	BEDROOM	1
	BATHROOM	1
	TOILET	1
	LIVINGROOM	1
	KITCHEN	1





# GROUND FLOOR

# HORIZON



## FEATURES

### FLOOR AREA

1 HALL	5,02 m <sup>2</sup>
2 KITCHEN	13,19 m <sup>2</sup>
3 BEDROOM 1	16,72 m <sup>2</sup>
4 LIVING & DINNING ROOM	29,63 m <sup>2</sup>
5 BATHROOM 1	6,70 m <sup>2</sup>
6 TOILET 1	2,38 m <sup>2</sup>
7 MAIN ENTRANCE	21,19 m <sup>2</sup>
8 COVERED TERRACE 1	30,50 m <sup>2</sup>
9 GARAGE	35,87 m <sup>2</sup>
TOTAL GROUND FLOOR	161,20 m <sup>2</sup>



# FIRST FLOOR

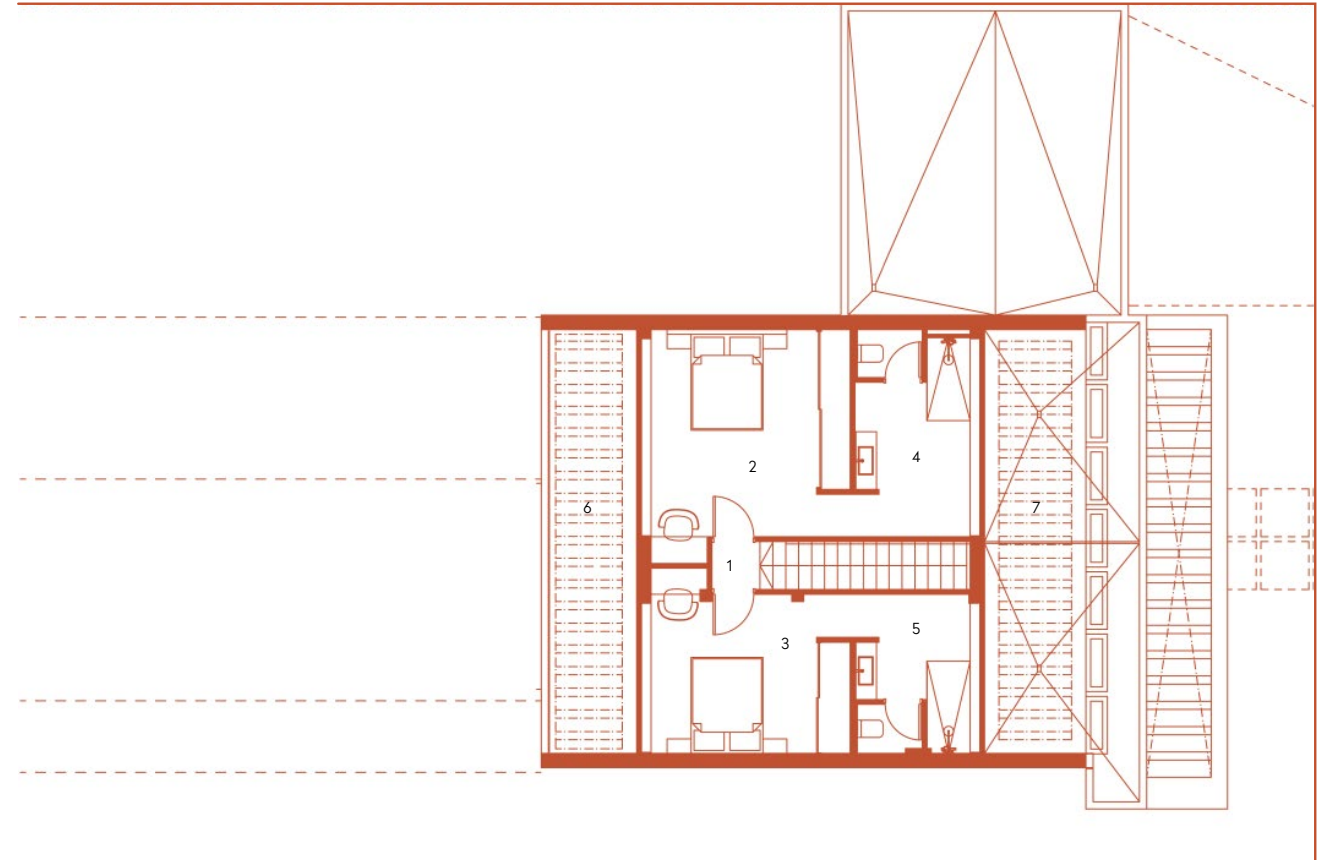
HORIZON

# 1

## FEATURES

### FLOOR AREA

1 HALL	1,00 m <sup>2</sup>
2 BEDROOM 2	19,94 m <sup>2</sup>
3 BEDROOM 3	15,48 m <sup>2</sup>
4 BATHROOM 2	10,38 m <sup>2</sup>
5 BATHROOM 3	7,85 m <sup>2</sup>
6 COVERED TERRACE 2	17,60 m <sup>2</sup>
7 COVERED TERRACE 3	18,68 m <sup>2</sup>
TOTAL FIRST FLOOR	90,93 m <sup>2</sup>





**ALTAONA**

GOLF AND  
COUNTRY  
VILLAGE