



2015

RIO



Information Provided by:
DEALER
PROCESS



The Power to Surprise

Designed to inspire.



Kia's design is more than shapes, lines and surfaces. It is a sharing of unexpected new and pleasant experiences.

To ensure that the 2015 Kia Rio exceeds the highest standards of design, technology and quality, Peter Schreyer — one of the world's top 3 automotive designers — thoroughly oversees every aspect in its design direction. For Schreyer, each element should bear the 'absolute purity' in order to create the design as a whole. The 'simplicity' philosophy is at the core of Kia's creative language.

PETER SCHREYER
President and Chief Design Officer,
Kia Motors Corporation



A personality that's sure to attract.

A daily commuter, a weekend warrior, a fashion trendsetter. No matter who you are or where you're going, there's a Rio that is sure to bring out your very best. There's no longer a need to compromise on style when searching for that perfect combination of comfort, economy and functionality.



SMOOTH, PRECISE HANDLING

Rio's MacPherson strut front suspension system strikes the perfect balance of ride comfort and precise handling. On SX models, the suspension system is sport-tuned and complemented with 17-inch, low-profile tires for a more dynamic driving experience.



ECO DRIVING

Kia's Active ECO system, standard on all Rio models with automatic transmission, optimizes engine and transmission management to reduce fuel consumption at the push of a button. It is also part of the available LX+ ECO package, which also includes Idle Stop & Go technology to reduce fuel consumption in city driving.



ADVANCED ENGINEERING

The Gasoline Direct Injection (GDI) engine's advanced technology includes dual cam variable valve timing (CVVT) that automatically adjusts valve timing for increased power and improved fuel efficiency.

Spacious and versatile.

The thinking behind the Rio's interior has resulted in an airy, comfortable and deceptively roomy cabin. Some of Rio's features are essential, and some provide added convenience, but all of them enhance the overall driving experience. From an available sunroof in summer to available heated front seats in winter, every feature has been designed for you to enjoy the drive no matter when and where you're headed.



60/40 SPLIT-FOLDING SEATS. Split-folding rear seats give you the flexibility to conveniently carry passengers or cargo – or both! – depending on your needs.



CONCEALED STORAGE. The cargo cover allows you to store your valuable items out of sight. Standard on Rio 5-door models.



POWER SUNROOF. Rio offers an available power sunroof that lets you enjoy the pleasure of open-air driving and adds to the sense of roominess inside the cabin.



HEATED SEATS. Available heated front seats help ensure comfortable driving in cold weather.





BUILT-IN NAVIGATION. In-dash navigation system¹ provides you with turn-by-turn directions to virtually any destination in North America.¹ It's optional on Rio SX models.

Feature-rich refinement.

While the ergonomically-designed cockpit puts the driver in control, the dashboard's harmonious interplay of form and function is given an extra touch of class by the use of high-grade finishing materials. In addition, Kia's designers have engineered a car that needs minimal hand movement to operate numerous controls without having to take your hands off the wheel.



POWER FOLDING MIRRORS. Available power-folding sideview mirrors tuck in close to the vehicle's body to help protect them from accidental damage in tight parking spaces.



PUSH-BUTTON START. There's no need to fumble for your keys when you have the luxury of a keyless push-button ignition switch – standard on Rio SX models.



HEATED COMFORT. A heated steering wheel provides ultimate comfort for cold Canadian winters. Just one of the many standard luxury features included on Rio SX models.



SWEET, SWEET MUSIC. For your listening enjoyment, Rio comes with standard AUX and USB audio ports that let you connect a USB drive, iPod^{®2} or other digital music player directly to the audio system. You can also stream audio wirelessly via available Bluetooth.^{®4}



SATISFYING IN SO MANY WAYS. A wide, easy-open tailgate on Rio 5-door models and split-folding rear seats – standard on both 4- and 5-door models – make for plenty of cargo-carrying flexibility, while an available power sunroof and heated front seats add to the Rio's comfort.



A performer you can count on.



EASY ON GAS
Fuel economy and confident performance come together in Rio's standard 1.6-litre, 138-horsepower gasoline direct injection (GDI) four-cylinder engine featuring an impressive 6.3L/100 km highway³ fuel economy rating.



CITY SMART
Rio's available ECO Package features Idle Stop & Go (ISG) technology that saves fuel in city driving by automatically shutting off the engine when the car comes to a complete stop and then restarting it instantly when you take your foot of the brake pedal.



PEACE OF MIND
All Rio models come with a full complement of standard safety systems, including six airbags, four-wheel anti-lock disc brakes, a Traction Control System (TCS) and Electronic Stability Control (ESC).



ADVANCED TECHNOLOGY
Available push-button start provides convenient operation. An available rear-camera display³ lets you see things behind your vehicle that you might not see by looking over your shoulder.



DEALER
EXPERIENCE



Simply connected.

What could be simpler than using your voice or a touch screen to control the onboard navigation and entertainment systems on your new Rio?¹ The Rio SX is available with Kia's multimedia interface, combining a dynamic display and brilliant graphics with touch screen gestures and speech recognition technology for precise control of multiple systems and functions.

TOUCH-SCREEN TECHNOLOGY

A bright, LCD touch screen features smartphone-like controls that respond with a touch of your finger.

MEDIA AND MUSIC INTEGRATION

The interface provides hands-free connectivity for your Bluetooth^{®4}-enabled cell phone and supports digital music playback from your MP3 player or USB-connected music sources.

REARVIEW CAMERA DISPLAY³

When you shift into reverse, the multimedia interface automatically displays a high-resolution image from the vehicle's rearview camera. Like an extra set of eyes, it shows you what you might not see in the rearview mirror or by looking over your shoulder.

ONBOARD NAVIGATION¹

Rio's available onboard navigation system is also fully integrated with the multimedia interface. Call-up a destination, find a point of interest or type in an address on the touch screen and Rio will take you there.



Home of 100% commercial-free music, news, talk, entertainment, traffic, weather and data. To find out more about SiriusXM satellite radio, speak to your Kia dealer or visit siriusxm.ca



Rio models are available with Bluetooth[®] wireless technology to provide hands-free calling connectivity with Bluetooth-enabled cell phones.

Designed to protect driver and passengers.

Drive the Rio and along with power, efficiency and performance come low emissions and reduced fuel consumption, not to mention safety specifications of the highest order. From a structural framework that absorbs impact forces in both frontal and side-on collisions to a range of active and passive safety measures, the Rio is built to protect those that matter.



LIGHTING. Fog lights make it easier to see – and be seen – in the dark of night or in inclement weather. Standard on Rio EX and SX models.



RAIN SENSING WIPERS. The windshield wipers are automatically activated as soon as moisture is detected for greater convenience and visibility. Standard on Rio SX models.



ANTI-LOCK BRAKING SYSTEM
ABS provides the foundation for Rio's active safety systems. It helps provide greater vehicle control when stopping in difficult conditions, such as wet, slippery or snow-covered roads.



VEHICLE STABILITY MANAGEMENT SYSTEM³
VSM adds steering direction control capability, intervening when appropriate to further stabilize the vehicle. It helps you regain control and return the vehicle to its intended path.



HILL-START ASSIST CONTROL
To help keep you from rolling backward when starting off on a steep hill, HAC automatically maintains braking pressure for up to two seconds after you take your foot off the brake pedal – enough time for engine power to move you forward.



ELECTRONIC STABILITY CONTROL
ESC monitors Rio's response to your throttle, brake and steering inputs in tight corners and evasive-maneuvre situations. If and when input and response are out of sync, ESC briefly takes over to restore stability through precise brake and engine-control interventions.



ELECTRONIC BRAKEFORCE DISTRIBUTION
EBD adjusts front-to-rear brake pressure to compensate for varying passenger/cargo loads and deliver more confident braking performance.



AIRBAG & SEAT-BELT SENSORS
Special onboard sensors measure the severity of a crash impact and determine whether the front seat occupants are wearing their seat belts. Within milliseconds, this information is used to determine and trigger an optimal level of airbag inflation.⁶



BRAKE ASSIST
When the Brake Assist System (BAS) detects an emergency braking situation it instantly applies full braking force, faster than you might be applying it, to help shorten overall stopping distance.



LATCH SYSTEM
Rio is equipped with an industry-standard LATCH (Lower Anchors and Tethers for Children) safety system that makes it easier to securely install a compatible child safety seat in either of the rear outboard seating positions.

FEATURES

Exterior	LX	EX	SX
15" steel wheels with covers	●	–	–
15" alloy wheels	ECO	–	–
16" alloy wheels	–	●	–
17" alloy wheels	–	–	●
P185/65R15 tires	●	–	–
P195/55R16 tires	–	●	–
P205/45R17 tires	–	–	●
Tire mobility kit	●	●	●
Power sunroof	–	○	○
Signature Kia grille	●	●	●
Body-coloured door handles	●	●	●
Body-coloured sideview mirrors	●	●	●
Power and heated sideview mirrors	●	●	●
Power-folding sideview mirrors	–	●	●
Projection headlights	–	–	5DR
Automatic headlights	–	●	●
Fog lights	–	●	●
LED taillights	–	–	●
LED sideview mirror signal repeaters	–	●	●
LED positioning lights	–	–	4DR
LED daytime running lights	–	–	5DR
Solar glass	–	–	●
Spoiler	5DR	5DR	5DR
Twin-tip muffler	–	–	●
Sport-tuned suspension	–	–	●
Front and rear splash guards	●	●	●

Safety	LX	EX	SX
Dual advanced front airbags	●	●	●
Dual front seat-mounted side airbags	●	●	●
Dual side curtain airbags	●	●	●
Adjustable front headrests	●	●	●
Electronic brake force distribution (EBD)	●	●	●
Electronic stability control (ESC)	●	●	●
Vehicle stability management (VSM)	●	●	●
Brake assist system (BAS)	●	●	●
Hill assist control (HAC)	●	●	●
4-wheel anti-lock braking system (ABS)	●	●	●
4-wheel disc brakes	●	●	●
Impact-sensing auto door unlock	●	●	●
Height adjustable front seatbelts with pretensioners	●	●	●
Lower anchors and tethers for children (LATCH)	●	●	●
Automatic headlights	–	●	●
Automatic rain sensing windshield	–	–	●
Automatic defog system	–	–	●
Variable intermittent wipers	●	●	●
Rear window defroster	●	●	●
Variable intermittent rear window wiper	5DR	5DR	5DR
Rearview camera ³	–	●	●

Comfort & Convenience	LX	EX	SX
Air conditioning	+	●	●
Automatic climate control with air ionizer	–	–	●
Remote keyless entry with panic function	+	●	●
Smart Key with push button start	–	–	●
Power door locks	●	●	●
Power windows	●	●	●
AM/FM/CD/MP3/Satellite stereo system ⁵	●	●	●
AUX and USB input ports	●	●	●
4-speakers	●	–	–
6-speakers	–	●	●
Bluetooth® hands-free cell phone connectivity ⁴	+	●	●
SIRIUSXM® satellite radio (includes three trial months) ⁵	●	●	●
UVO™ infotainment system	–	●	●
In-dash navigation system ¹	–	–	○
Supervision instrument cluster	–	–	●
Cooling glove box	–	–	●
Alloy sport pedals	–	–	●
Sliding centre armrest	–	●	●
Dual front 12V power outlets	●	●	●
Active ECO system	AT	AT	AT
Idle Stop & Go	ECO	–	–

Seating & Trim	LX	EX	SX
Cloth seats	●	●	–
Leather seats	–	–	●
Heated front seats	+	●	●
Black interior	●	●	○
Two-tone beige/black interior	–	–	○
Two-tone chocolate/black interior	–	–	○
Heated steering wheel	–	–	●
6-way adjustable driver seat	●	●	●
Seat back pockets	●	●	●
60:40 folding rear seat	●	●	●
Tilt steering column	●	–	–
Tilt and telescopic steering column	–	●	●
Steering wheel-mounted audio controls	●	●	●
Steering wheel-mounted cruise controls	+	●	●
Leather-wrapped steering wheel	–	●	●
Leather-wrapped gear shift knob	–	●	●
Metal-grain trim plates	–	●	●
Soft-touch dash	–	●	●
Leatherette door centre trim	–	●	●
Illuminated vanity mirrors	●	●	●

● = Standard ○ = Optional – = Not Available AT = Automatic Transmission + = Plus (+) package
ECO = ECO package 5DR = 5-door models only 4DR = Sedan models only

SPECIFICATIONS

Engine	
Type	1.6L, GDI 4-cylinder, aluminium block and head
Valve train	16-valve, DOHC, Dual-cam Variable Valve Timing (CVVT)
Horsepower	138 hp @ 6,300 rpm
Torque	123 lb.-ft. @ 4,850 rpm
Intake	Variable intake system (VIS)
Compression ratio	11.0:1
Fuel management	Active ECO System (AT); Idle Stop & Go (ECO)
Transmission	6-speed manual transmission; Available 6-speed automatic with Sportmatic shifter

Dimensions, mm (in.)	5-door	Sedan
Wheelbase	2,570 (101.2)	2,570 (101.2)
Length	4,045 (159.3)	4,365 (171.9)
Width	1,720 (67.7)	1,720 (67.7)
Height	1,455 (57.3)	1,455 (57.3)
Ground clearance	140 (5.5)	140 (5.5)
Head room (front/rear)	1,015/955 (39.9/37.6)	1,015/955 (39.9/37.6)
Shoulder room (front/rear)	1,350/1,324 (53.1/52.1)	1,350/1,324 (53.1/52.1)
Leg room (front/rear)	1,112/790 (43.8/31.1)	1,112/790 (43.8/31.1)
Hip room (front/rear)	1,323/1,301 (52.1/51.2)	1,323/1,301 (52.1/51.2)

Curb Weight, kg (lb.)	5-door	Sedan
Manual transmission	1,124 (2,479)	1,131 (2,494)
Automatic transmission	LX: 1,163 (2,564) EX/SX: 1,187 (2,617) ECO: 1,180(2,601)	LX: 1,167 (2,573) EX/SX: 1,185 (2,613) ECO: 1,178 (2,598)

Body & Chassis	
Layout	Front engine, front wheel drive
Body type	Steel unibody
Front suspension	Independent, MacPherson struts and anti-roll bar (sport-tuned suspension on SX)
Rear suspension	Torsion beam, coil springs, mono-tube shocks (sport-tuned suspension on SX)
Steering	Electric-assist steering

Brakes	
Type	4-wheel disc
ABS	4-wheel, 4-channel, 4-sensor
Front, mm (in.)	256 (10.1) vented disc; 280 (11.0) vented disc (SX)
Rear, mm (in.)	262 (10.3) solid disc

Capacities, L (cu. ft.)	5-door	Sedan
Passenger volume	2,503 (88.4)	2,503 (88.4)
Cargo capacity, rear seats up	425 (15.0)	389 (13.7)
Fuel tank capacity, L (imp. gal.)	43 (9.5)	43 (9.5)

Fuel Economy, Highway/City, L/100km	
Manual transmission	6.4/8.7
Automatic transmission	6.3/8.8; ECO: 6.3/8.5



Starting with the 2015 model year, Natural Resources Canada in conjunction with the automotive manufacturers, have introduced a new testing procedure that will result in higher fuel consumption ratings that are more representative of everyday driving. Kia Canada is one of the first automotive manufacturers to implement the new testing practice and would like to ensure you fully understand the difference. The new procedure incorporates 3 additional test cycles that account for air conditioner usage, cold temperature operation, and higher speeds with more rapid acceleration and braking.

To learn more, please visit: <http://oee.nrcan.gc.ca/fcr-rcf/public/index-e.cfm>



EXTERIOR COLOURS



Aurora Black (P)
BC / BL / CL



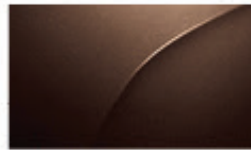
Sterling (M)
BC / BL



Polar
BC / BL / BEL



Graphite (P)
BC / BL



Chestnut (P)
BC / BL



Midnight Sapphire (P)
BC / BL / BEL



Chili (P)
BC / BL

INTERIOR COLOURS



Black cloth (BC)



Black leather (BL)



Chocolate leather (CL)



Beige leather (BEL)

M = Metallic, P = Pearl, BC = Black cloth, BL = Black leather, CL = Chocolate leather, BEL = Beige leather

The exterior and interior colours in this brochure are as close to the actual vehicle production colours as the printing process allows.

WHEELS



15" steel wheel
with full cover



15" alloy wheel



16" alloy wheel



17" alloy wheel

ACCESSORIES



Cargo net



Cargo tray



Rear bumper applique

Kia Genuine Parts and Accessories are engineered by Kia and installed by professionals at your Kia dealer. For more information on the full line of available Genuine Kia Parts and Accessories, see your local Kia dealer, visit www.kia.ca or call 1-877-542-2886.

GET THE POINTS

Kia Member Rewards is an exclusive rewards program for Kia customers.

As a Kia Rewards Member, you'll earn points with every dollar you spend on maintenance service, parts and accessories at your servicing Kia dealer. Those Reward Points can be redeemed for discounts on future purchases - including the purchase of a new Kia. Plus earn Bonus Points on select items and services to collect rewards even faster.



Kia Member Rewards No-Charge Benefits include:

- Fuel fill-up with the delivery of your new Kia vehicle
- Local shuttle service
- Multi-point vehicle inspection with every service visit
- Windshield washer fill-up with every paid service
- Windshield wiper installation with wiper purchase
- Preferential rates on car rentals, nationwide
- 24/7 Roadside Assistance for your vehicle under Kia's 5-year/100,000 km warranty or Certified Pre-Owned warranty
- Email notification of exclusive Kia specials and events - a great way to earn Reward Points and save on future purchases

Become a Kia Premium Rewards Member:

Ask your Kia Dealer how you can enjoy even more benefits.

Enroll Today. Becoming a Kia Rewards Member is easy. See your Kia Dealer today to join. Visit rewards.kia.ca for full terms and conditions.

ENDNOTES

1. When equipped with the navigation system, French voice commands may be limited.
2. iPod® is a registered trademark of Apple Inc.
3. Vehicle Stability Management and rearview camera are not substitutes for proper and safe driving procedures.
4. The Bluetooth® word mark and logos are registered trademarks owned by Bluetooth SIG, Inc. A compatible Bluetooth wireless technology-enabled cell phone is required to use Bluetooth hands-free wireless technology.
5. Service available in the 10 provinces and three territories of Canada, and the 48 contiguous states of the U.S. Monthly subscription sold separately after three trial months.
6. For maximum protection, always wear your seat belt.
7. The Kia 5-year/100,000-km warranty includes various warranties and roadside assistance. Some restrictions apply. For more information call us at 1-877-542-2886 or visit to kia.ca
8. Figures are for automatic transmission.



**WE'VE
GOT YOU
COVERED.**

At Kia, we believe peace of mind should come standard with every vehicle we make. That's why we back every model with one of the best warranties in the industry.

Our outstanding warranty coverage includes:

5-year/100,000 km - Worry-free comprehensive warranty covering virtually the entire vehicle⁷

5-year/100,000 km - Powertrain warranty covering the engine, transmission, axles, differentials and driveshafts⁷

5-year/100,000 km - Roadside assistance covers you in case of mechanical breakdown anywhere in North America⁷

5-year/unlimited km - Anti-perforation warranty on body sheet metal defects in material/workmanship⁷

For more information visit kia.ca or call 1-877-542-2886