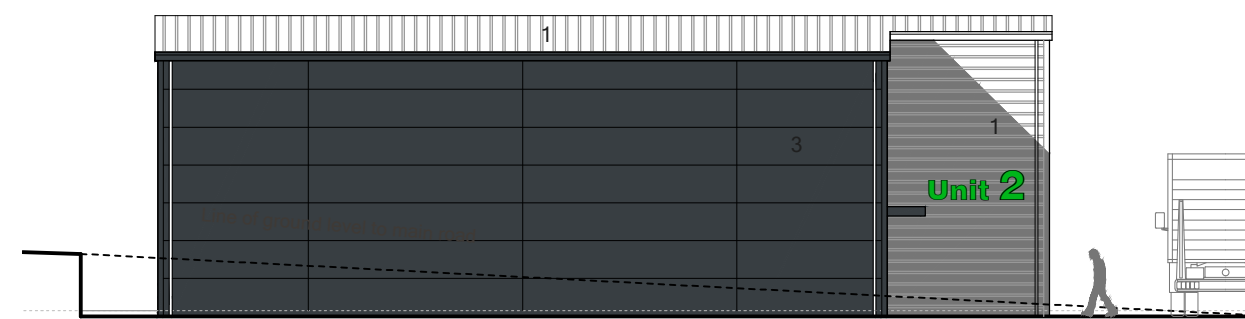
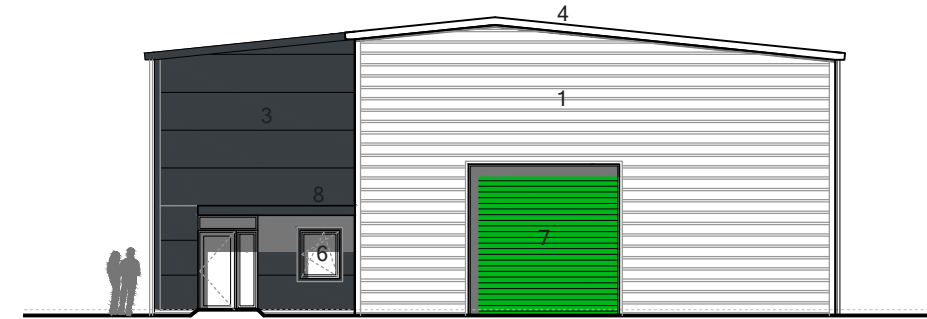


Proposed Ground Floor Plan 1:200

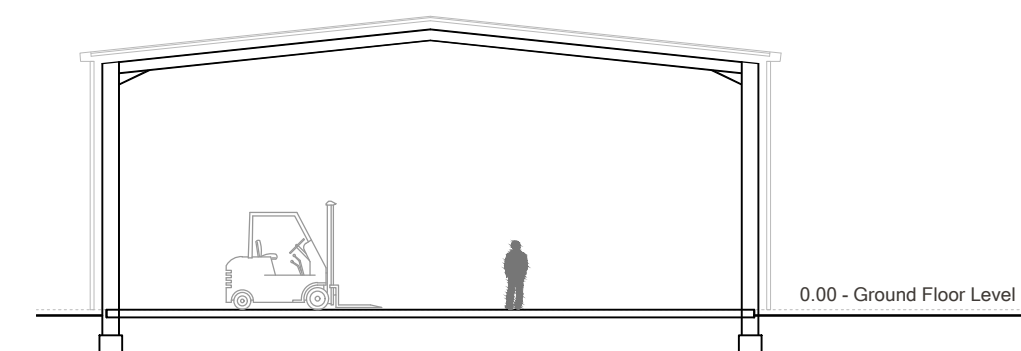
NOTE: Internal layout indicative. Final layout to be agreed



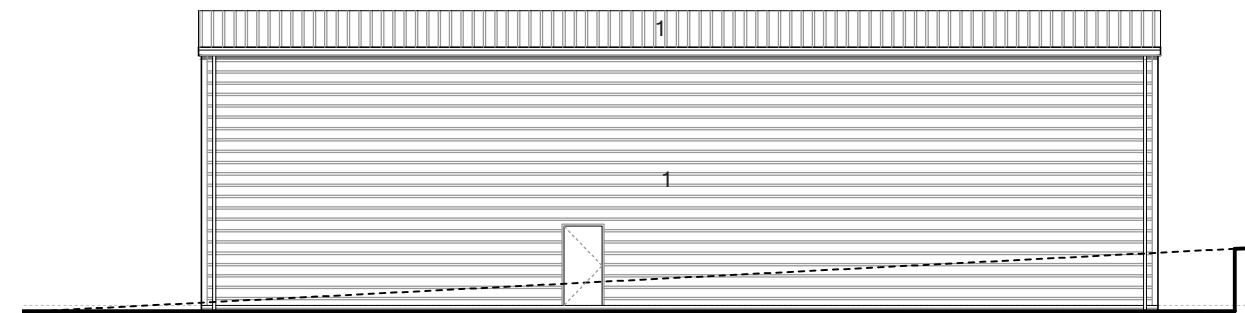
Proposed Elevation 1 1:200



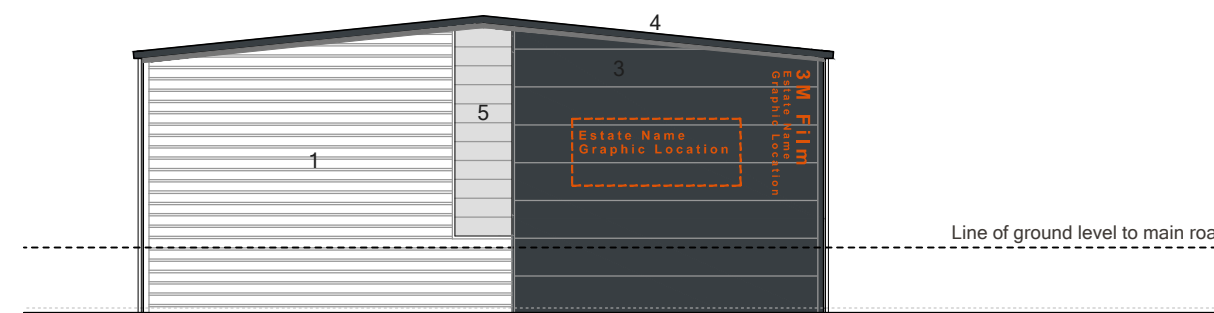
Proposed Elevation 2 1:200



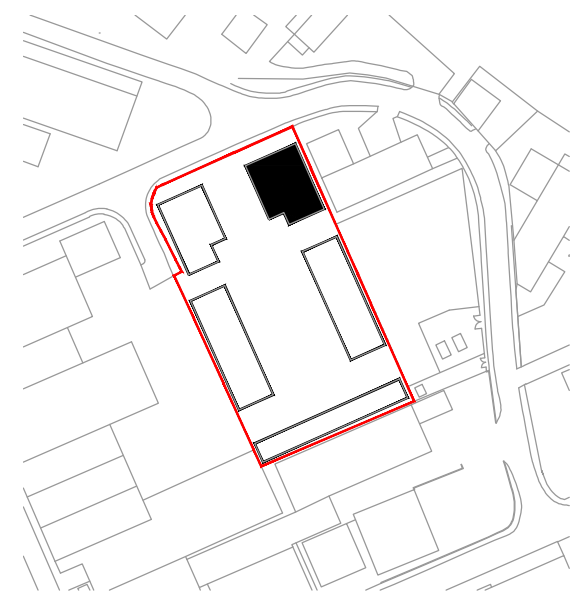
Proposed Section 1:200



Proposed Elevation 3 1:200



Proposed Elevation 4 1:200



Unit Location Plan

KEY

- A. Potential office area
- B. Disabled W.C
- C. Warehouse / Storage area

MATERIALS

1. Trapezoidal cladding - RAL 9006; silver / white aluminium
2. Sinusoidal cladding - RAL 7016; anthracite grey
3. Flat Panel cladding - RAL 7016; anthracite grey
4. PPC pressed metal flashings - to match wall colour
5. Polycarbonate glazing with opal finish
6. PPC windows / external doors - RAL to match wall colour
7. PPC roller shutter doors - RAL colours varied on each block (colours tba)
8. PPC pressed metal canopies - RAL to match wall colour
9. Self-adhesive film signage / graphic area - colour indicative
10. Facing brickwork to exposed plinth / walls - colour to be agreed



This drawing must not be scaled. Figured dimensions and levels to be used. Any inaccuracies must be notified to the architect. Detail drawings and large scale drawings take precedence over smaller drawings.

Rev: A Fire escape door added and proposed ground line revised. Materials key updated. 09.03.20 CHT

Rev: -

Rev:

PRELIMINARY	✓
PLANNING	
DESIGN	
TENDER	
CONSTRUCTION	

powelldobson
ARCHITECTS

Cardiff Office: Suite 1F, Building One, Eastern Business Park, Wern Fawr Lane, Old St Mellons, Cardiff CF3 5EA
Tel: +44 (0)33 33 201 001 Fax: +44 (0)29 2079 1212 email: cardiff@powelldobson.com

Drawing No. 19070 (05) 201
Rev. A

Contract: MKR Property
Pant Industrial Estate, Merthyr Tydfil
Title: Unit 2 - Floor Plans and Elevations

Scale: 1:200 @ A2
Date: January 2020
Drawn: CHT
Checked: ipf