

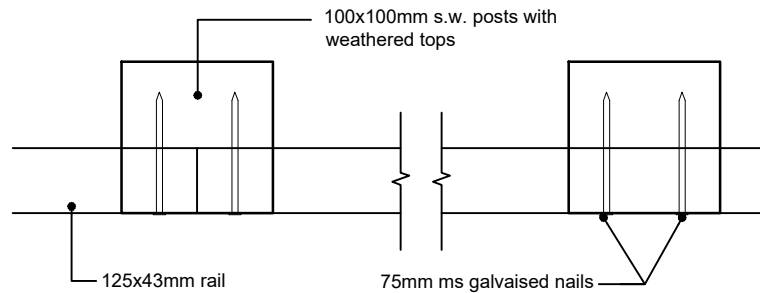
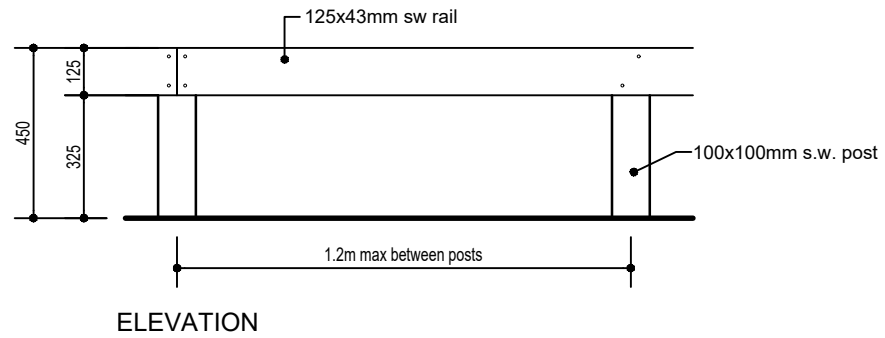
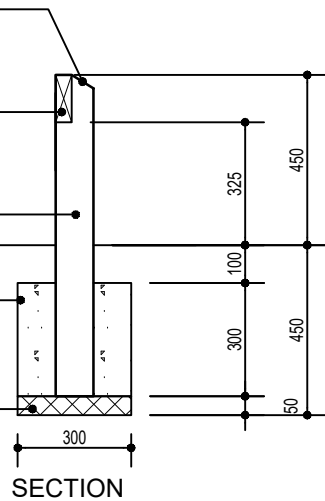
Top of posts to be cut to slope for surface run-off and weather treated

125x43mm horizontal sw rail, twice nailed to post with 75mm long ms galvanised nails

100x100mm s.w. posts at 1.2m centres with weathered tops

Site mixed ST2 grade concrete or GEN1 grade ready mix concrete in accordance with NHBC standards Appendix 2.1 B Table 1

50mm hardcore



PLAN

REV.	DESCRIPTION	DATE
CLIENT Obsidian Developments		
DRAWING TITLE External Details 450mm Timber Knee Rail		
SCALE	DATE	DRAWN BY
1:20@A4	Oct '21	HA Ltd
DRAWING NO.	REVISION	TYPE
2128-D06		PLN



10 Gold Tops  
Newport t. 01633 844970  
NP20 4PH e. info@hammond-ltd.co.uk

[www.hammond-ltd.co.uk](http://www.hammond-ltd.co.uk)

© Hammond Architectural Limited 2021  
Figured dimensions must be taken in preference to scaled dimensions and any discrepancies are to be referred to Hammond Architectural Ltd. Contractors, subcontractors and suppliers must verify all dimensions on site before commencing any work or making any workshop drawings.