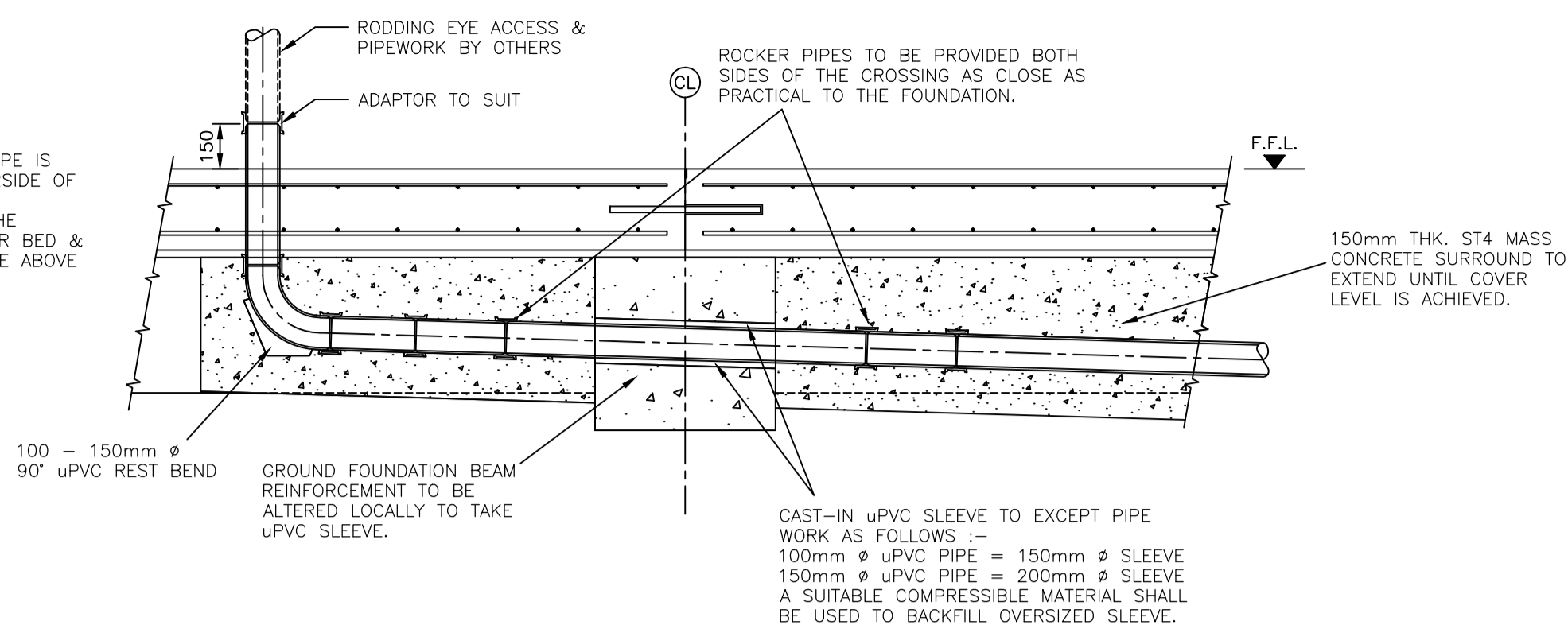
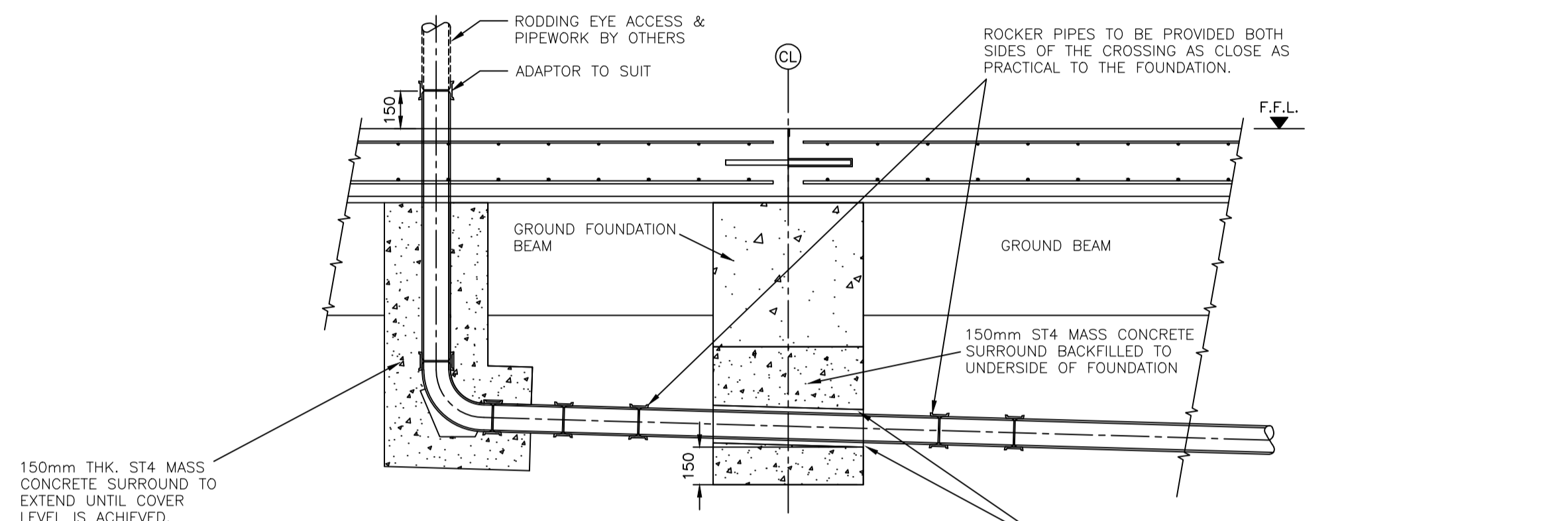


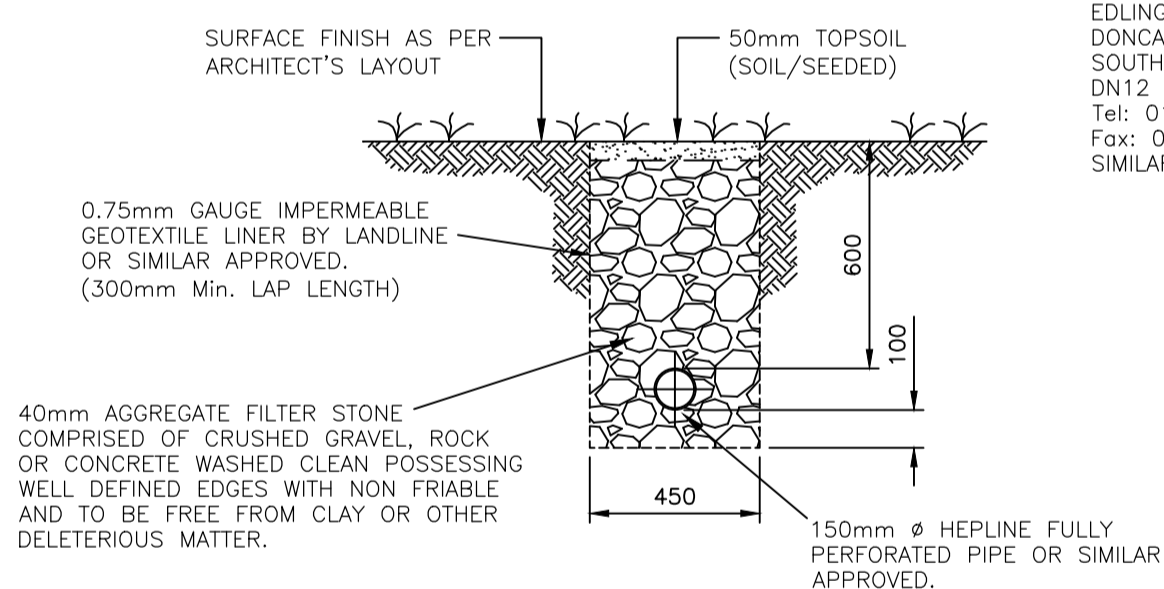
NOTE  
WHERE THE CROWN OF THE PIPE IS WITHIN 450mm OF THE UNDERSIDE OF THE SLAB, 150mm CONCRETE ENCASEMENT TO EXTEND TO THE UNDERSIDE OF SLAB GRANULAR BED & SURROUND TO BE USED WHERE ABOVE CONDITION EXCEEDS 450mm.



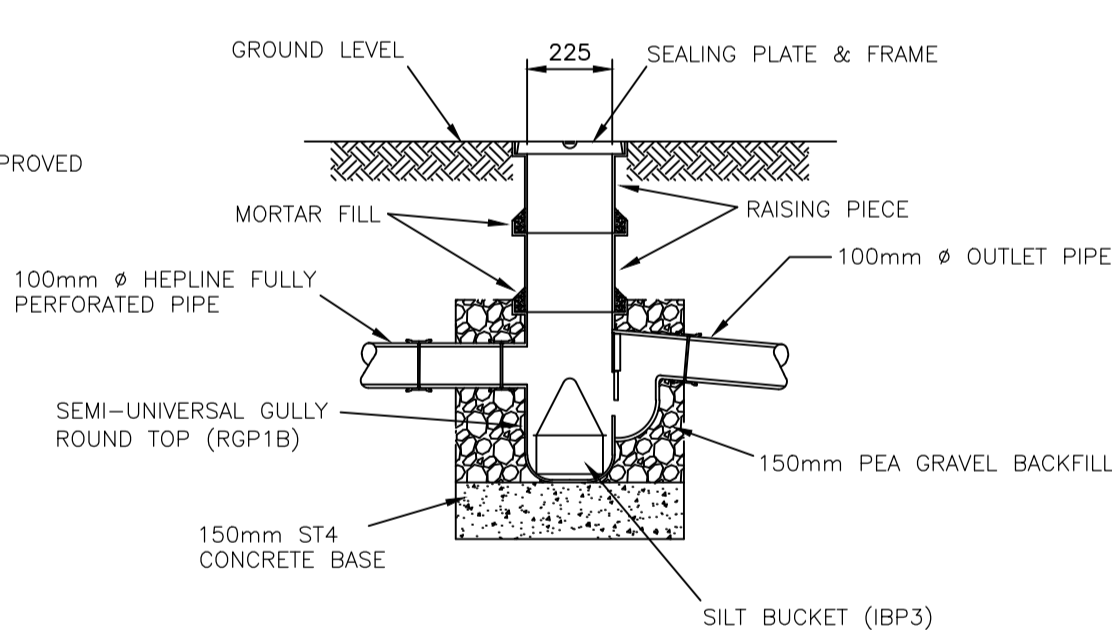
TYPICAL THRO BEAM CROSSING  
DETAIL INTERNAL / EXTERNAL  
(Scale 1:20)



TYPICAL BELOW BEAM CROSSING  
DETAIL INTERNAL / EXTERNAL  
(Scale 1:20)

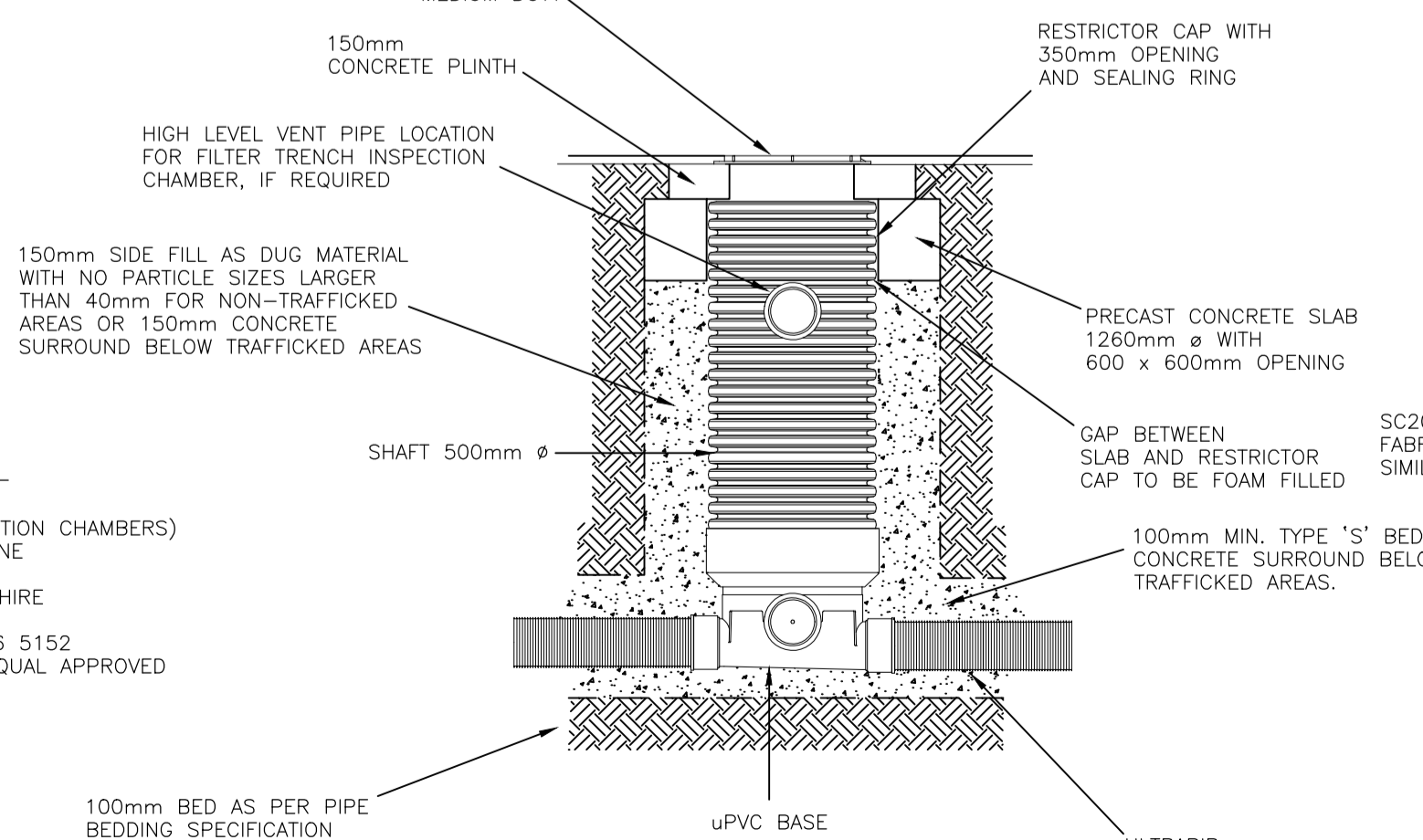


FIELD DRAIN  
(Scale 1:20)

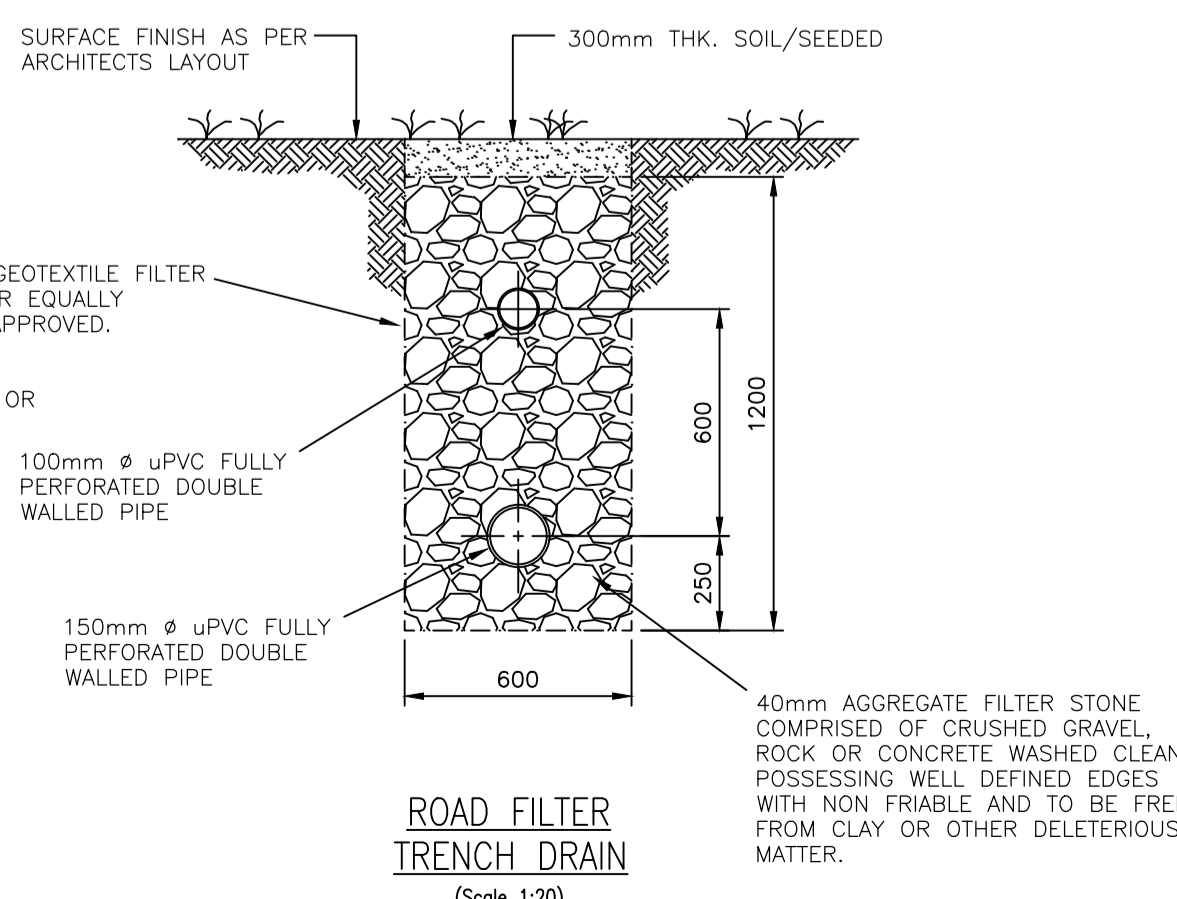


ROAD FILTER TRENCH  
SILT TRAP  
(Scale 1:20)

NOTE  
SUPPLIED BY:-  
WAVIN LIMITED  
(OSMA INSPECTION CHAMBERS)  
EDLINGTON LANE  
DONCASTER  
SOUTH YORKSHIRE  
DN12 1BY  
Tel: 0844 856 5152  
SIMILAR OR EQUAL APPROVED

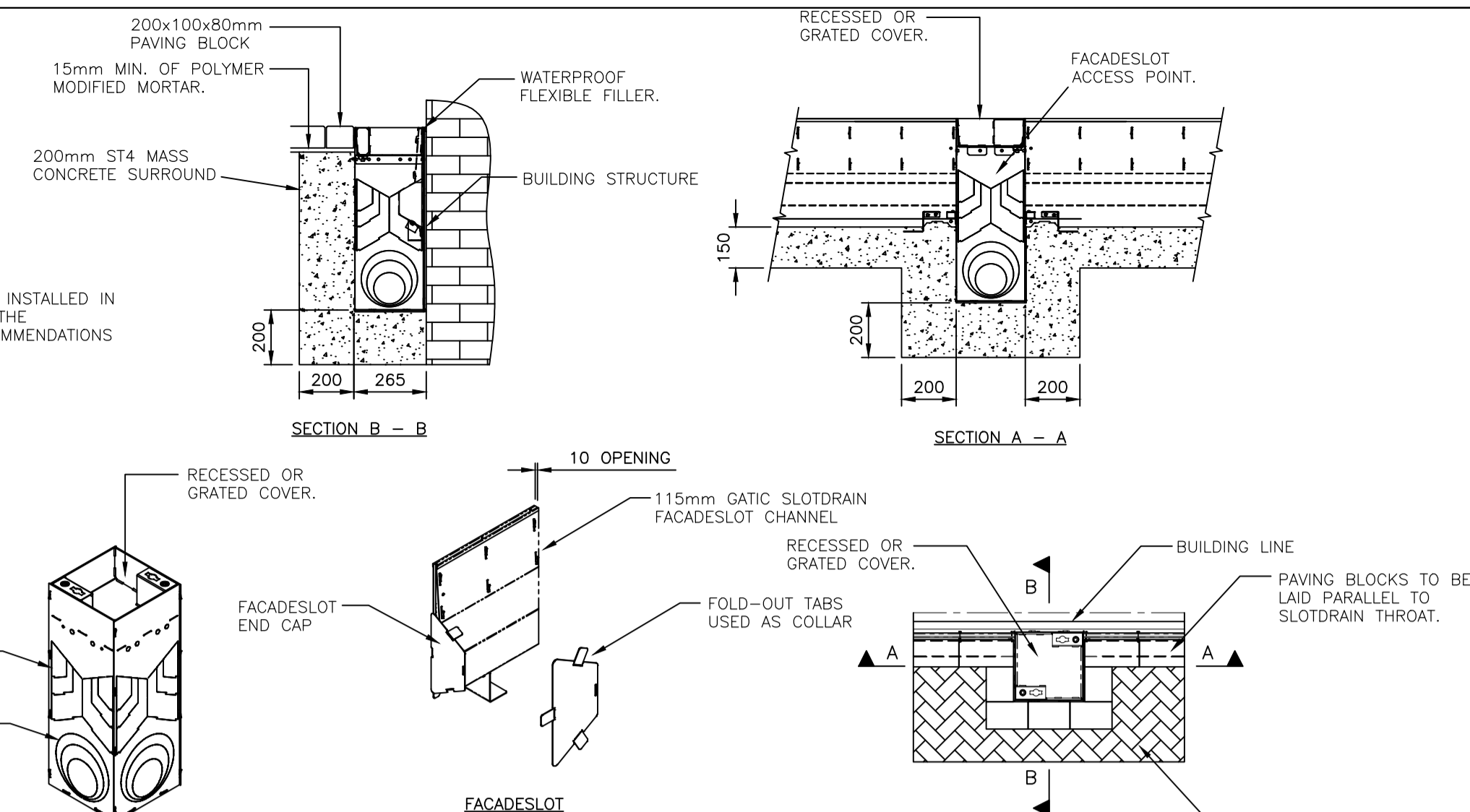


TYPICAL uPVC MANHOLE  
INSPECTION CHAMBER  
DEPTH FROM GROUND LEVEL TO SOFFIT 0.75m - 1.2m  
(Scale 1:20)

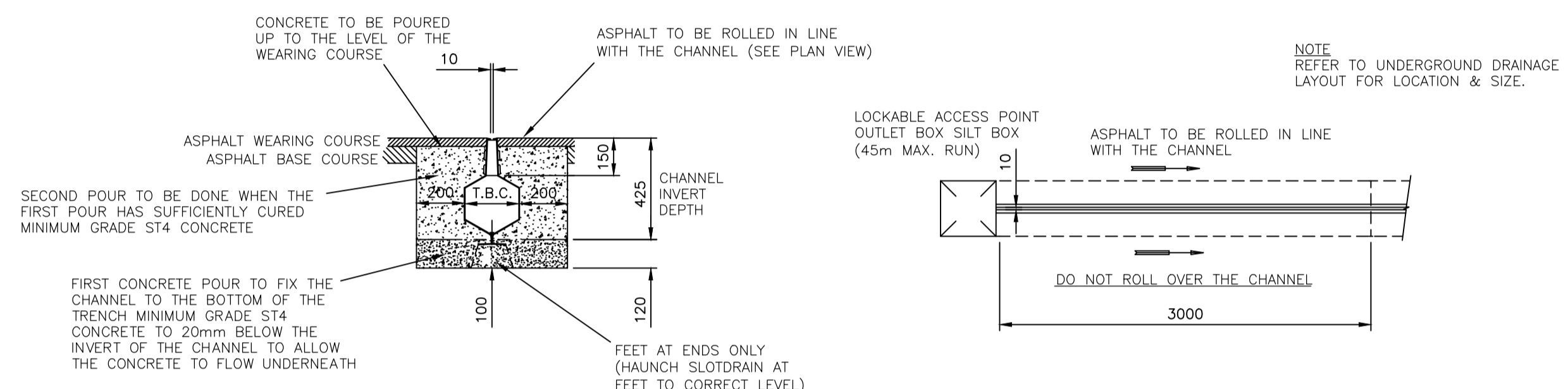


ROAD FILTER  
TRENCH DRAIN  
(Scale 1:20)

NOTE  
GATIC DRAIN TO BE INSTALLED IN ACCORDANCE WITH THE MANUFACTURE RECOMMENDATIONS



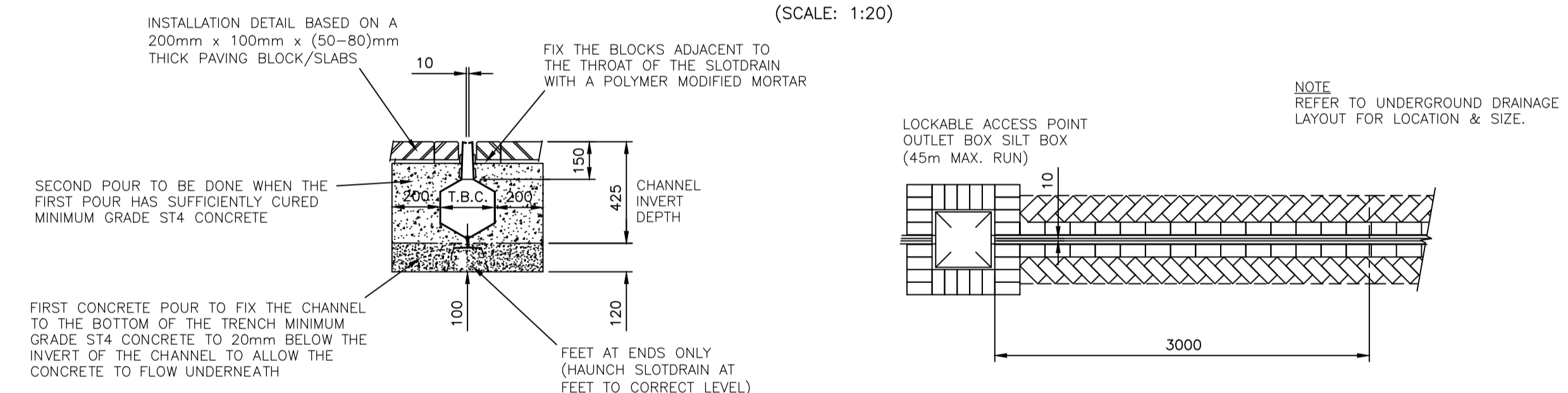
TYPICAL GATIC FACADE DETAILS  
(SCALE 1:20)



SECTION DETAIL  
(SCALE: 1:20)

GATIC SLOTDRAIN  
ASPHALT INSTALLATION  
(SCALE: 1:20)

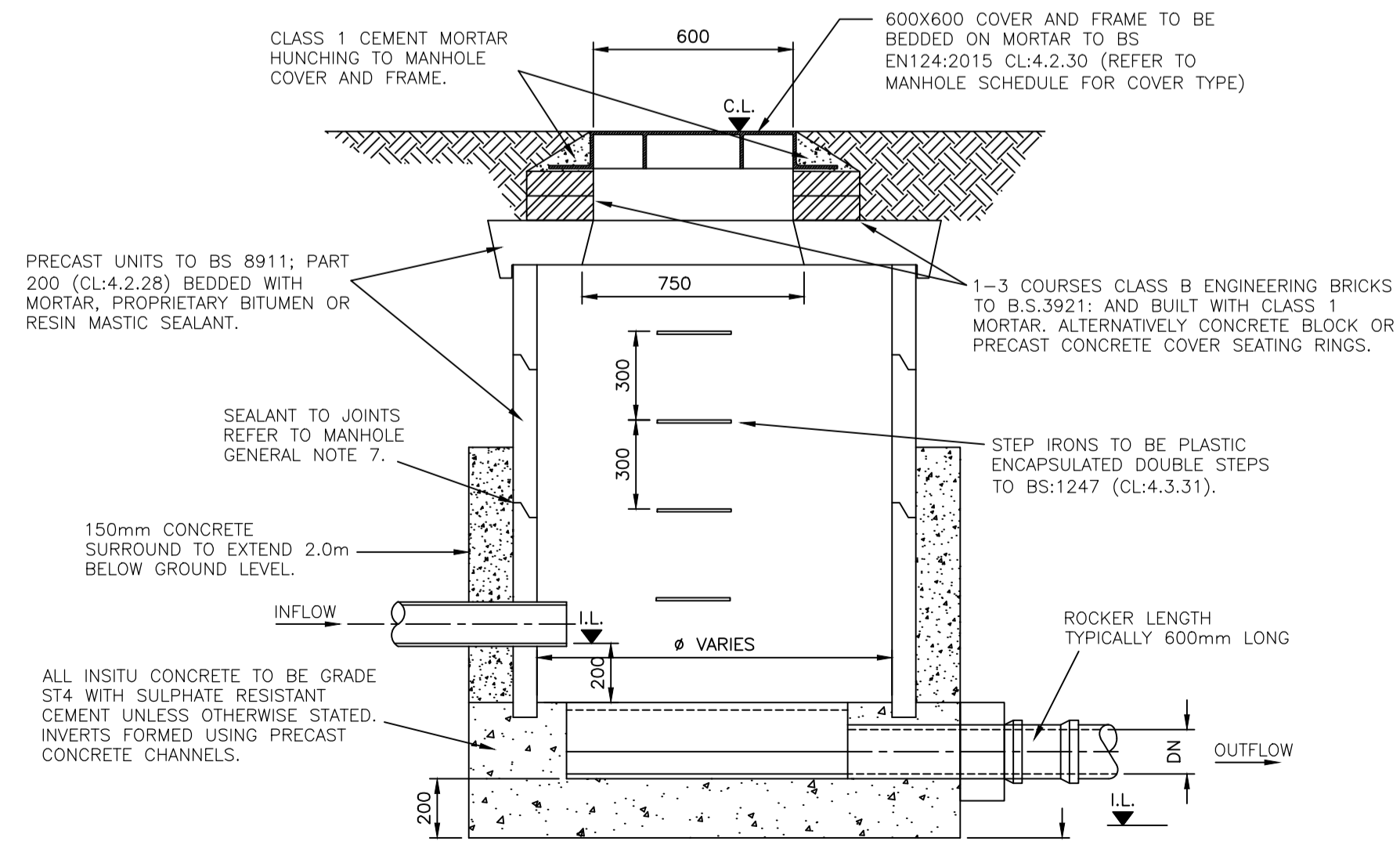
PLAN DETAIL  
(SCALE: 1:20)



SECTION DETAIL  
(SCALE: 1:20)

GATIC SLOTDRAIN  
BLOCK/SLABS INSTALLATION  
(SCALE: 1:20)

PLAN DETAIL  
(SCALE: 1:20)



TYPICAL SEPA INSPECTION CHAMBER  
CONCRETE MANHOLE DETAIL  
DEPTH FROM GROUND LEVEL TO SOFFIT 1.2m - 3.0m  
(Scale 1:20)

GENERAL NOTES

- ALL WORKS UNLESS NOTED OTHERWISE TO BE CARRIED OUT IN ACCORDANCE RELEVANT CODES OF PRACTICE AND WELSH BUILDING STANDARDS.
- PRIVATE DRAINAGE TO BE CONSTRUCTED IN ACCORDANCE WITH BS:EN:752 - DRAIN & SEWER SYSTEMS OUT SIDE BUILDINGS TO THE APPROVAL OF THE BUILDING CONTROL OFFICER.
- THIS DRAWING IS TO BE READ IN CONJUNCTION WITH ALL RELEVANT ARCHITECTS, ENGINEERS & SPECIALIST DRAWINGS AND SPECIFICATIONS.
- ALL DIMENSIONS IN MILLIMETRES AND ALL LEVELS IN METERS UNLESS NOTED OTHERWISE.
- ANY DISCREPANCIES NOTED ON SITE ARE TO BE REPORTED TO THE ENGINEER IMMEDIATELY.
- THE CONTRACTOR MUST VERIFY THE LOCATION AND LEVEL OF THE EXISTING DRAINAGE AFFECTED BY THE NEW WORKS AND CONFIRM HIS ACCEPTANCE OR OTHERWISE OF THE INFORMATION SHOWN ON THE DRAWINGS PRIOR TO

PLANNING

REV	DESCRIPTION	BY	CHK	APP	DATE

**HARLEY HADDOW CONSULTING ENGINEERS**  
Suite 4/3, The Skypark, 8 Elliot Place, Glasgow, G3 8EP  
T: +44 (0) 141 332 3031  
Email: gha@harleyhaddow.com  
www.harleyhaddow.com  
Association of Consulting Engineers Member Firm  
Edinburgh | Glasgow | London | Doha

Project:  
**Proposed Industrial Units  
Pant Industrial Estate  
Merthyr Tydfil, Wales**

Drawing Title:  
**Proposed Drainage  
Construction Details  
Sheet 03**

Scale @ A1 Date Engineer  
1:20 February 2020 C.Connor

Drawing No. 305056-042 Revision -