

Dyffryn Road, Ammanford

Tree Protection Plan



Tree Protection Plan

- Root Protection Area
- Tree Category
- Tree Number
- Canopy Spread

Protective Fencing (PF) ———

Secondary Location of PF ———

Construction Exclusion Zone

No Dig Construction

Trees to be Removed for Arboricultural Reasons

Trees to be Removed for Development Reasons

Category A Trees to be Retained

Category B Trees to be Retained

Category C Trees to be Retained

Scale 1:1400 @ A3
12/2020

Dyffryn Road, Ammanford

Tree Protection Plan

Tree Protection Plan

- Root Protection Area
- Tree Category
- Tree Number
- Canopy Spread

Protective Fencing (PF) - - - - -

Secondary Location of PF - - - - -

Construction Exclusion Zone

No Dig Construction

Trees to be Removed for Arboricultural Reasons ●

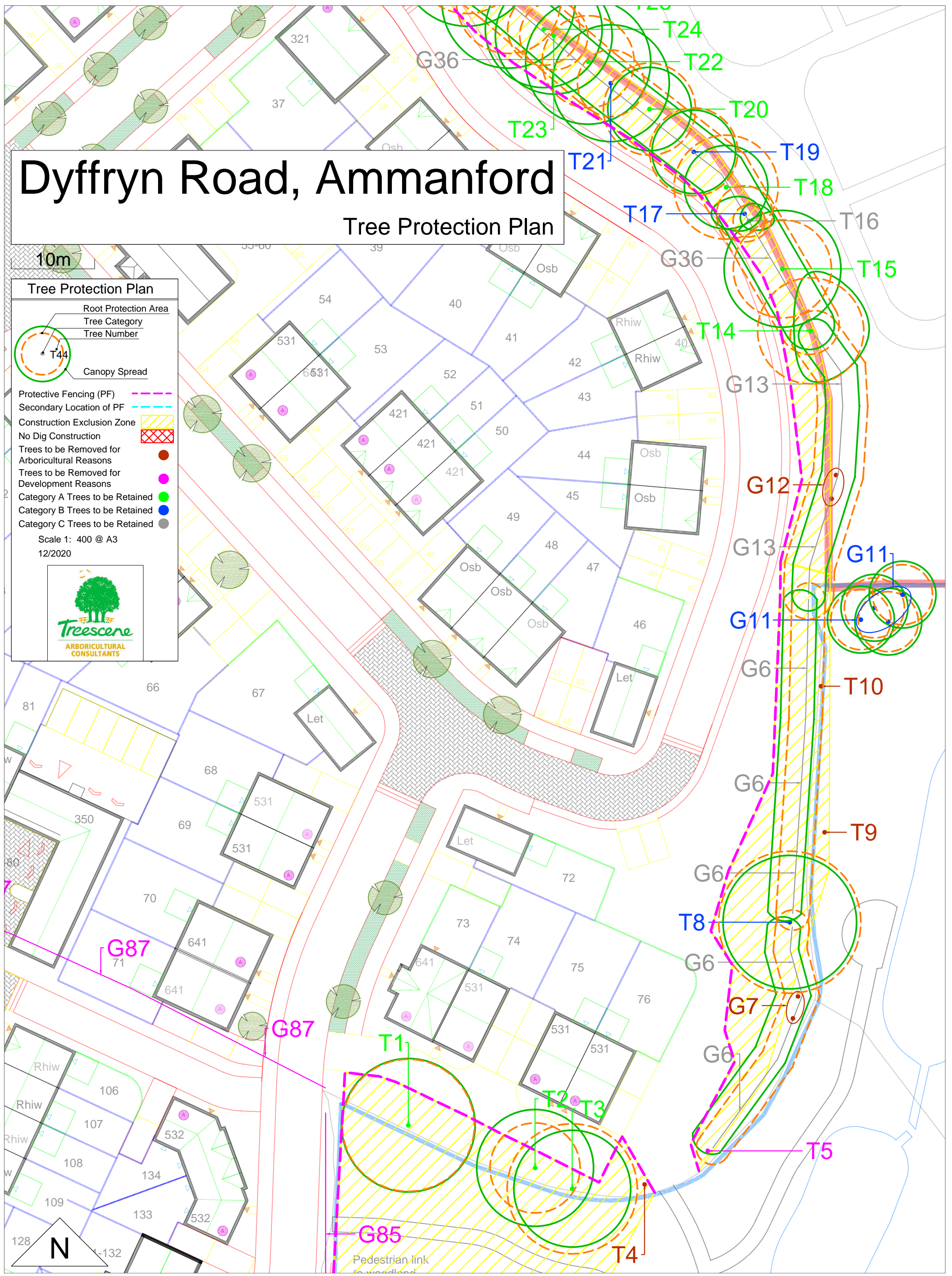
Trees to be Removed for Development Reasons ●

Category A Trees to be Retained ●

Category B Trees to be Retained ●

Category C Trees to be Retained ●

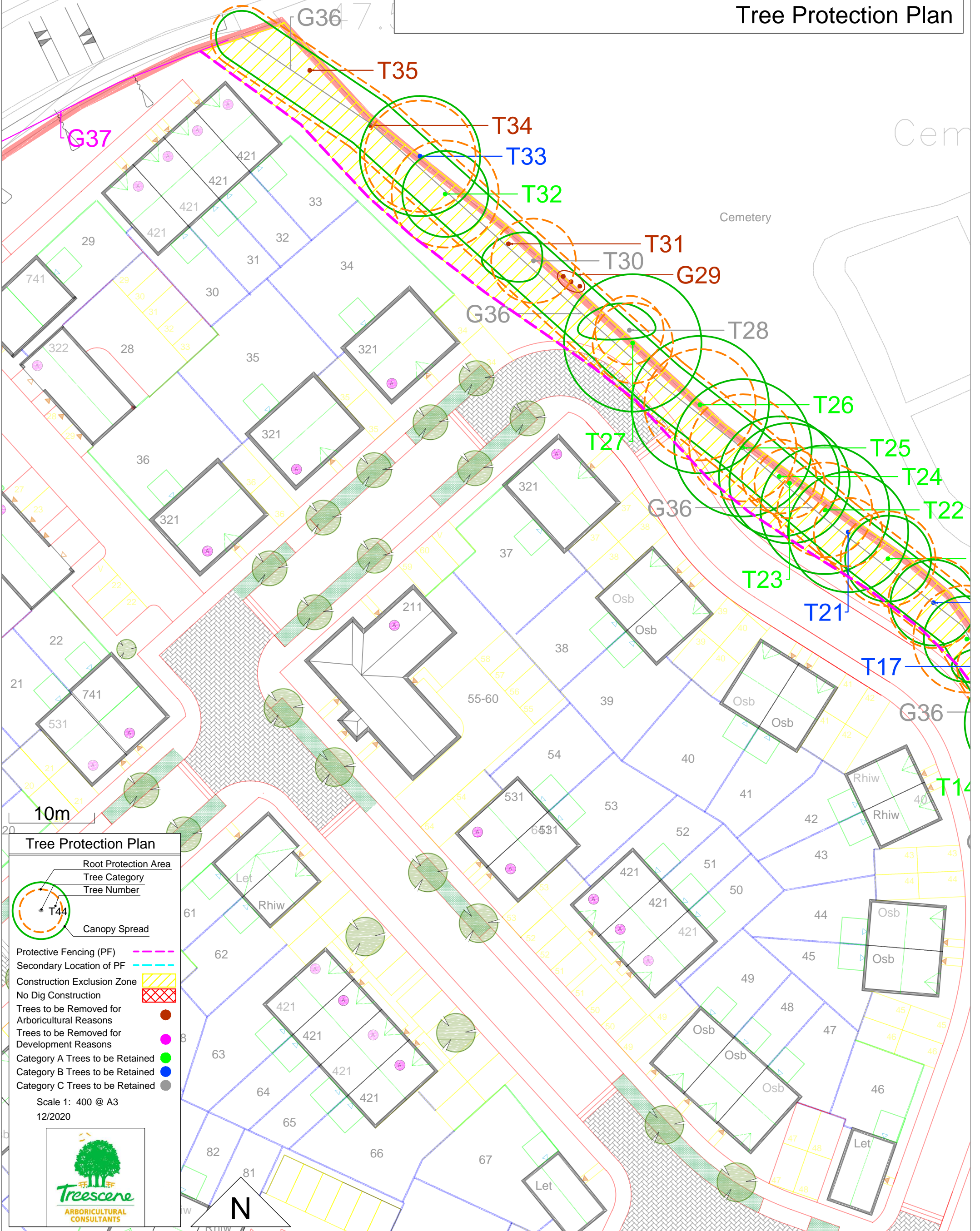
Scale 1: 400 @ A3
12/2020



traffic calming
sures in accordance
highway engineers
ils

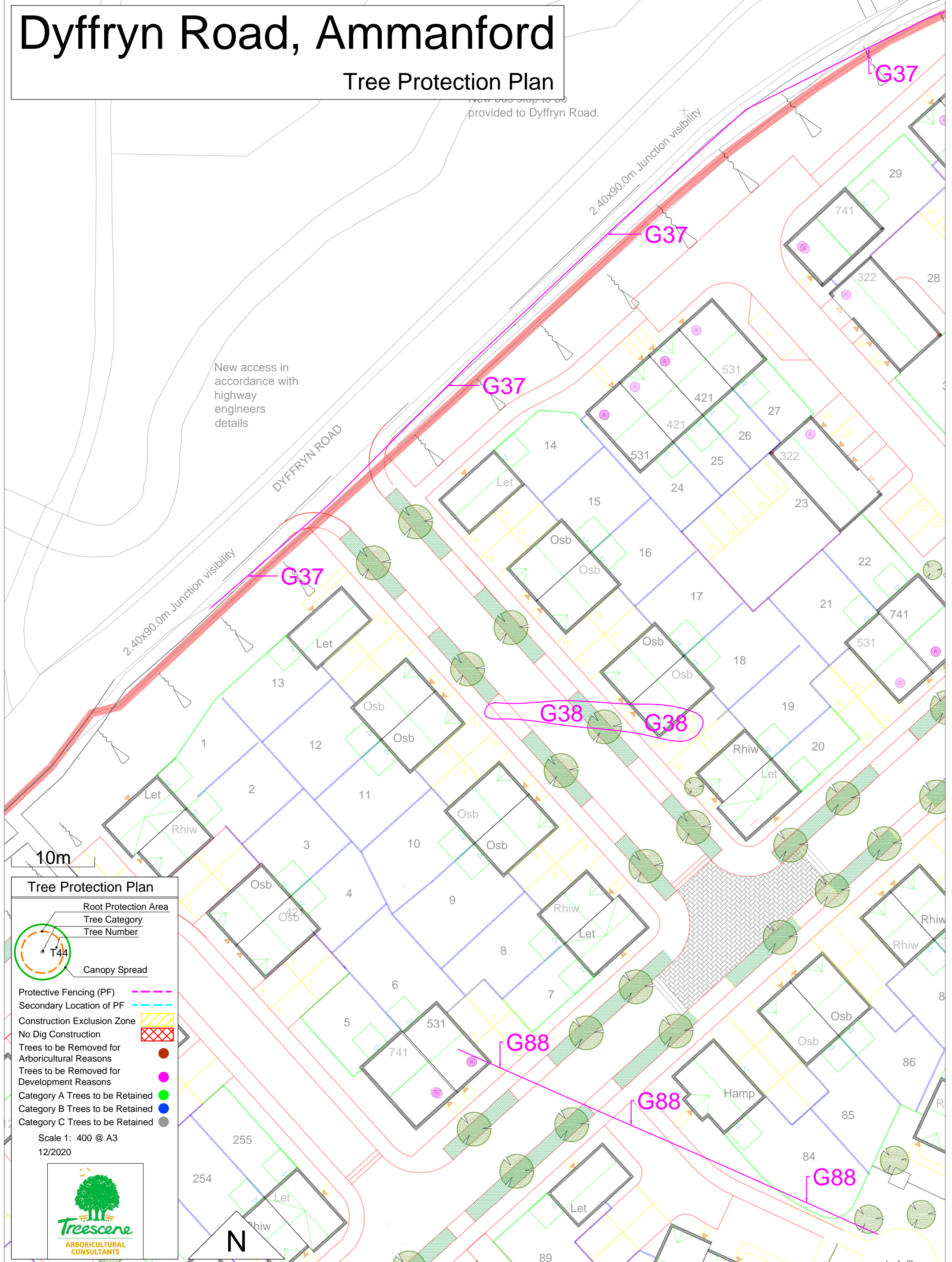
Dyffryn Road, Ammanford

Tree Protection Plan



Dyffryn Road, Ammanford

Tree Protection Plan



Tree Protection Plan

- Root Protection Area
- Tree Category
- Tree Number

Canopy Spread

- Protective Fencing (PF) - Dashed pink line
- Secondary Location of PF - Dashed blue line
- Construction Exclusion Zone - Yellow hatched area
- No Dig Construction - Red hatched area
- Trees to be Removed for Arboricultural Reasons - Red circle
- Trees to be Removed for Development Reasons - Pink circle
- Category A Trees to be Retained - Green circle
- Category B Trees to be Retained - Blue circle
- Category C Trees to be Retained - Grey circle

Scale 1: 400 @ A3
12/2020

Treescene
ARBORICULTURAL CONSULTANTS



Dyffryn Road, Ammanford

Tree Protection Plan

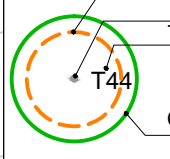
with highway engineers details

7.2m

10m

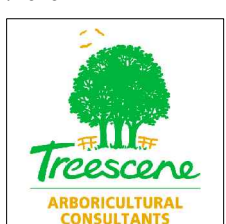
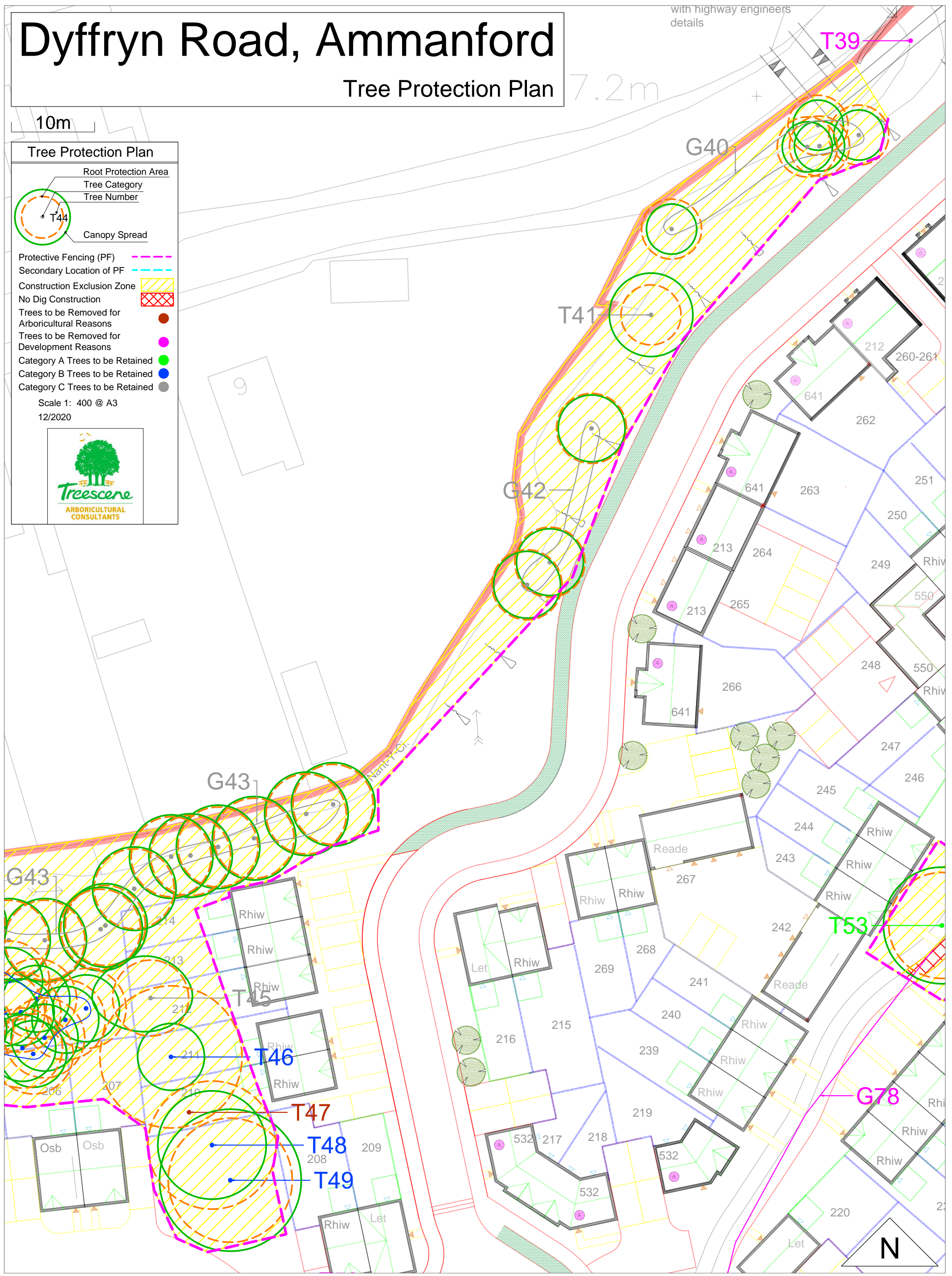
Tree Protection Plan

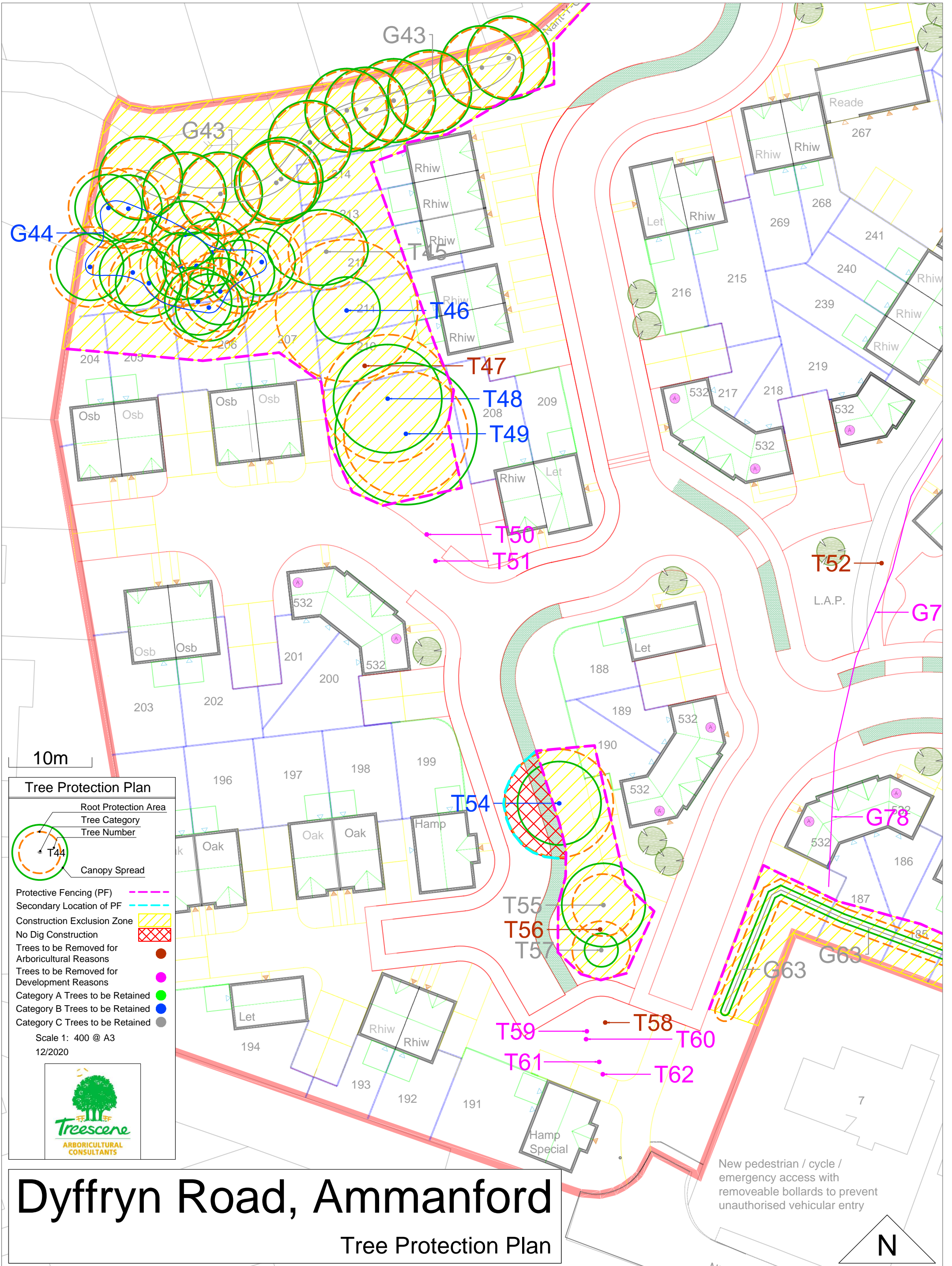
- Root Protection Area
- Tree Category
- Tree Number
- Canopy Spread



- Protective Fencing (PF) - Dashed pink line
- Secondary Location of PF - Dashed blue line
- Construction Exclusion Zone - Yellow hatched area
- No Dig Construction - Red hatched area
- Trees to be Removed for Arboricultural Reasons - Brown dot
- Trees to be Removed for Development Reasons - Purple dot
- Category A Trees to be Retained - Green dot
- Category B Trees to be Retained - Blue dot
- Category C Trees to be Retained - Grey dot

Scale 1: 400 @ A3
12/2020

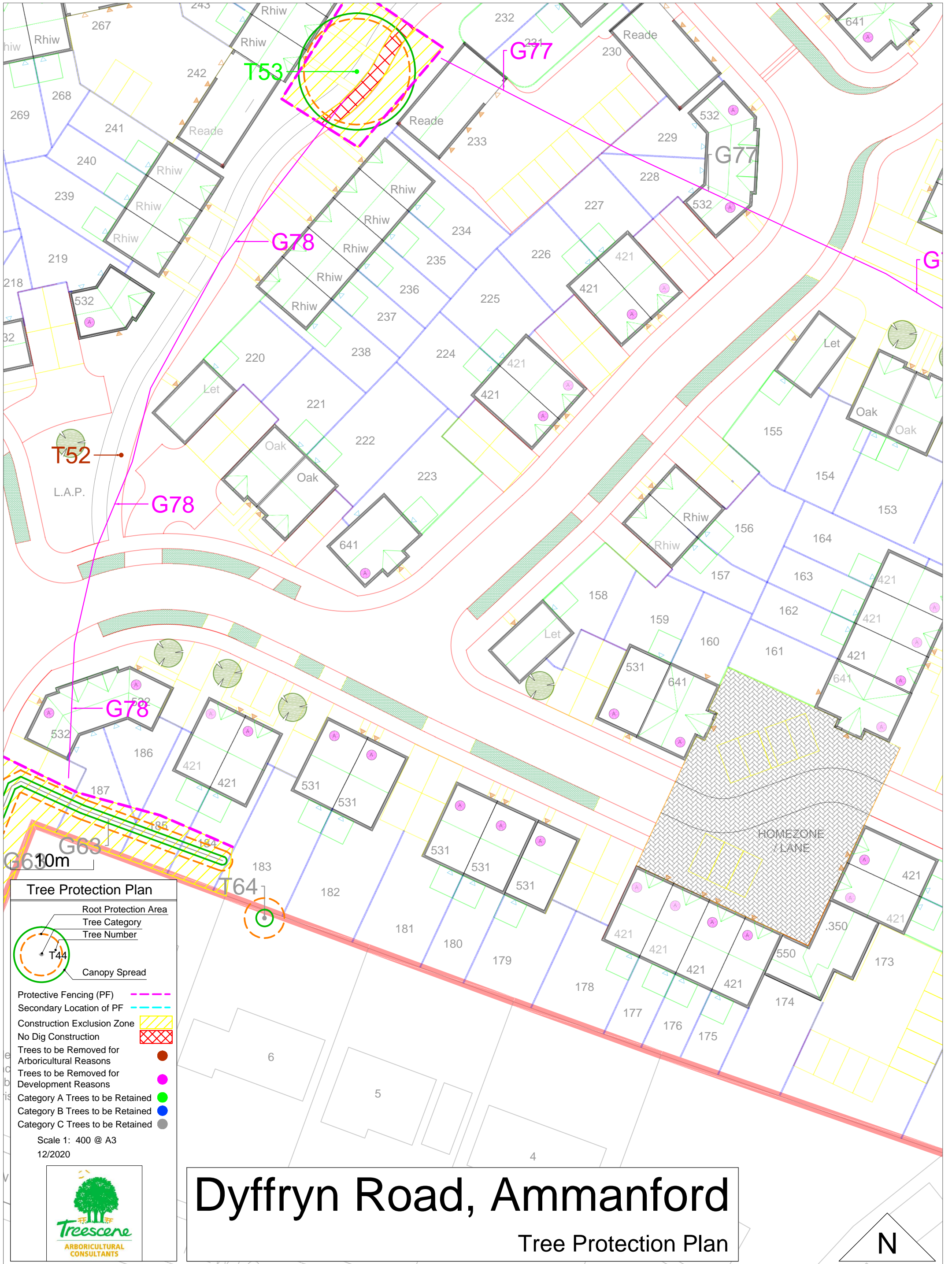


Dyffryn Road, Ammanford

Tree Protection Plan

New pedestrian / cycle / emergency access with removeable bollards to prevent unauthorised vehicular entry





Tree Protection Plan

- Root Protection Area
- Tree Category
- Tree Number

- Canopy Spread

Protective Fencing (PF) - - - - -

Secondary Location of PF - - - - -

Construction Exclusion Zone

No Dig Construction

- Trees to be Removed for Arboricultural Reasons
- Trees to be Removed for Development Reasons
- Category A Trees to be Retained
- Category B Trees to be Retained
- Category C Trees to be Retained

Scale 1: 400 @ A3
12/2020

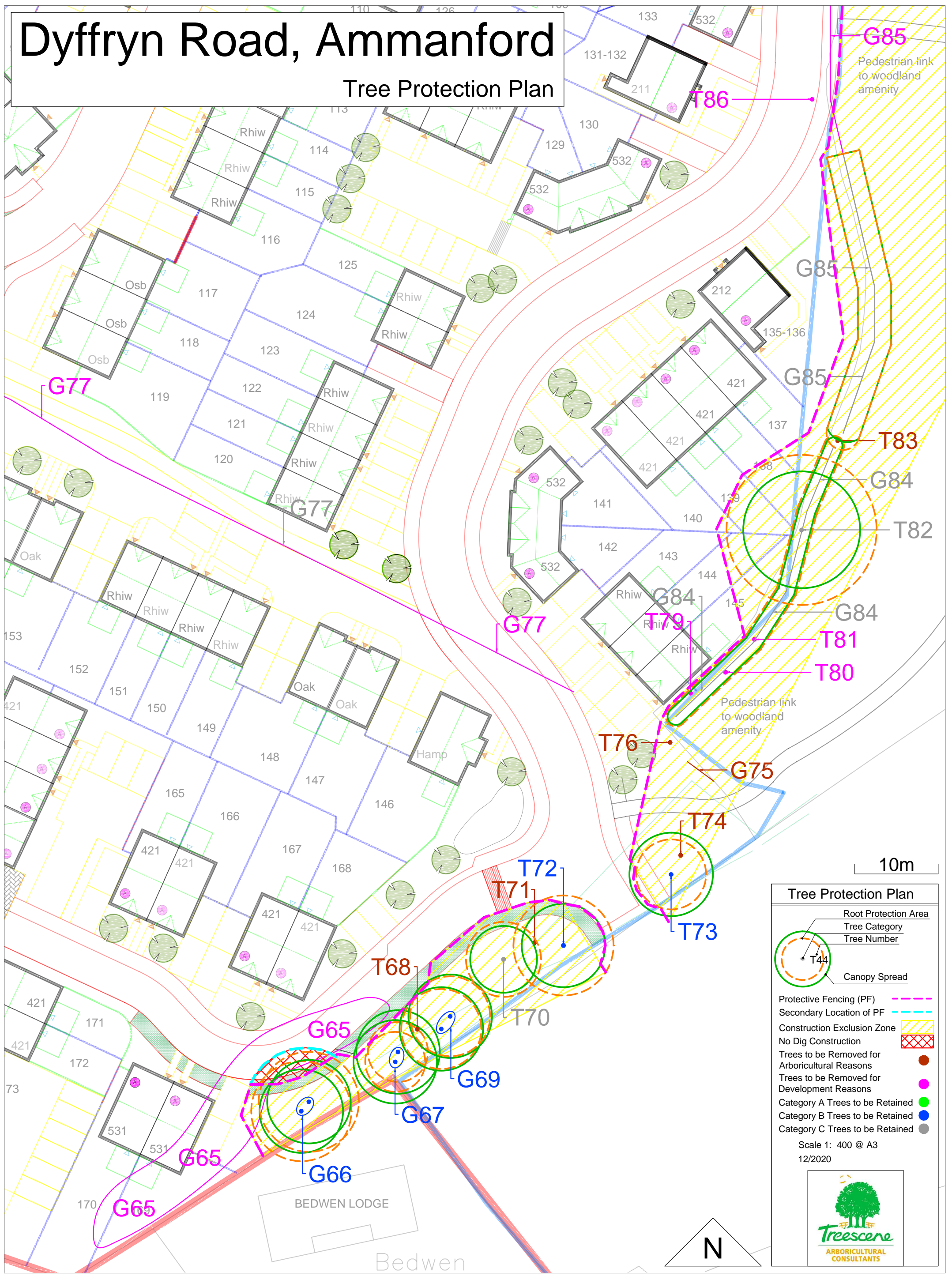
Dyffryn Road, Ammanford

Tree Protection Plan



Dyffryn Road, Ammanford

Tree Protection Plan



Tree Protection Plan

- Root Protection Area
- Tree Category
- Tree Number
- Canopy Spread

Protective Fencing (PF) ————

Secondary Location of PF ————

Construction Exclusion Zone

No Dig Construction

Trees to be Removed for Arboricultural Reasons

Trees to be Removed for Development Reasons

Category A Trees to be Retained

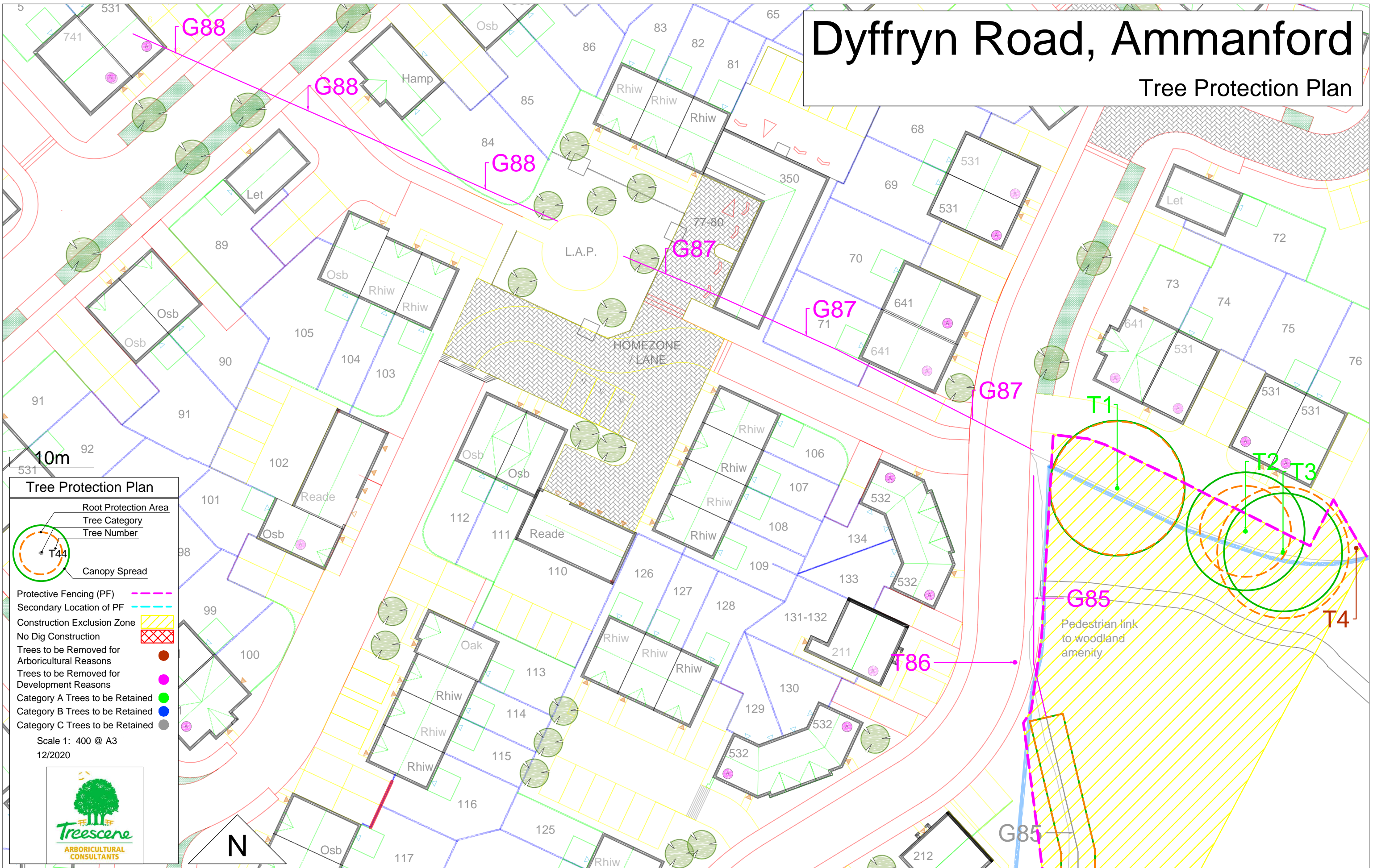
Category B Trees to be Retained

Category C Trees to be Retained

Scale 1: 400 @ A3
12/2020

Dyffryn Road, Ammanford

Tree Protection Plan



10m

Tree Protection Plan

- Root Protection Area
- Tree Category
- Tree Number

Canopy Spread

- Protective Fencing (PF) - - - - -
- Secondary Location of PF - - - - -
- Construction Exclusion Zone
- No Dig Construction
- Trees to be Removed for Arboricultural Reasons
- Trees to be Removed for Development Reasons
- Category A Trees to be Retained
- Category B Trees to be Retained
- Category C Trees to be Retained

Scale 1: 400 @ A3
12/2020

