



# GEA Magnum LPS & Global LPS Low Profile Vertical Lift Parlors

Parallel stalls designed  
for quick installation  
and fast facility  
upgrades



## INDIVIDUAL COW COMFORT

With individual indexing, large mature cows can be properly positioned alongside smaller first-calf heifers so that they are comfortable throughout their time in the parlor – which is the first step to a smooth, efficient milking process.

# Everything you want in a parlor

You can check every box with the latest stalls available from GEA Farm Technologies. This low profile, vertical lift parlor series is built for your cows, your operators, and your milking facilities.

Whether you are looking to quickly retrofit the front-ends of your parlor, remodel your current facility, or find a parlor option that can work with your ceiling height limitations or preferences – the Magnum LPS and Global LPS low profile, vertical lift series of stalls from GEA are designed for versatility.

Stalls can be adjusted by height, length, and width to ideally fit the frame of your herd for optimal cow positioning. Match your stalls with optional cabinets and a full selection of parlor controls for comfortable operator function, and you have a custom-built milking parlor that gives you everything you want – and more!



- Fast installation
- Vertical lift rapid exit with a low profile stall design
- Adjustable stall sizes and adjustable stall centers
- Individual or group indexing
- Easily integrates with your choice of milking control
- Stall can be configured as double (or single) 6 through 80
- Low maintenance and less service over-time
- Able to retrofit any current brand of parlor
- Competitive pricing

# Features that deliver reliability and performance, milking after milking



**Individual Indexing and Individual Release** — individual indexing properly positions cows in the parlor stall so that udders can be easily accessed by the operator. The individual fit also makes for a more comfortable milking process for both large and small cows. Individually indexed parlors have an individual release, so you can access a special needs cow and easily guide her from the parlor. Group indexing is available on the Global LPS model.

**Vertical lift rapid exit** — stalls lift up and out of the way for a highly efficient, fast exit that maximizes parlor turns and overall throughput.

**68" clearance under lift rail** — helps ensure that cows can clear the rail upon exit and do not rub their backbone on any surface.

**Heavy-duty construction** — hot dip galvanized super structure and parlor fronts for lasting durability.



**Gravity closed sequence gates** — promote fast, efficient loading. Plus, the angled gates with a three-bar design helps to prevent cow legs from getting entangled and minimizes cow-side contact while lifting for a safer and more comfortable cow environment.

**Adjustable stall centers** — fit individual farm requirements.

**Proven low maintenance air system** — direct acting cylinders reduce risks associated with cable/chain breakage. This allows for more trouble-free service over time.

**Modular system** — the low profile stalls are modular, which makes retrofit projects with existing cabinets quick and easy. Also, bolt-on construction helps to reduce installation time.



**Full selection of identification, detachers, sensors, and meters** — marry your stalls to one of the many identification and milking control options in the GEA line – along with herd management software to analyze all your data. GEA's integrated parlor components work together so you have a highly performing milking system.



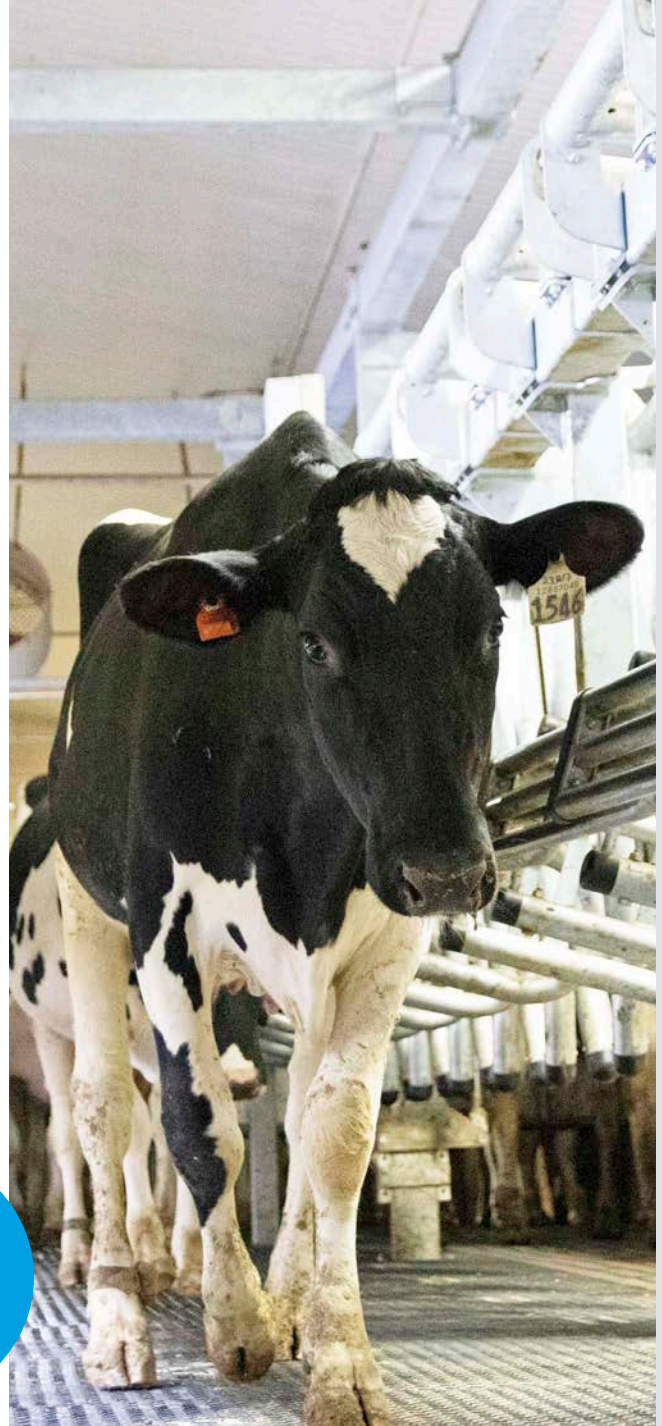
*Customizable cabinet options — the GEA Medallion® Series cabinets are now more flexible than ever. They can be custom-cut to fit the control/detacher option of your choice.*



**Gravity close  
sequence gates**

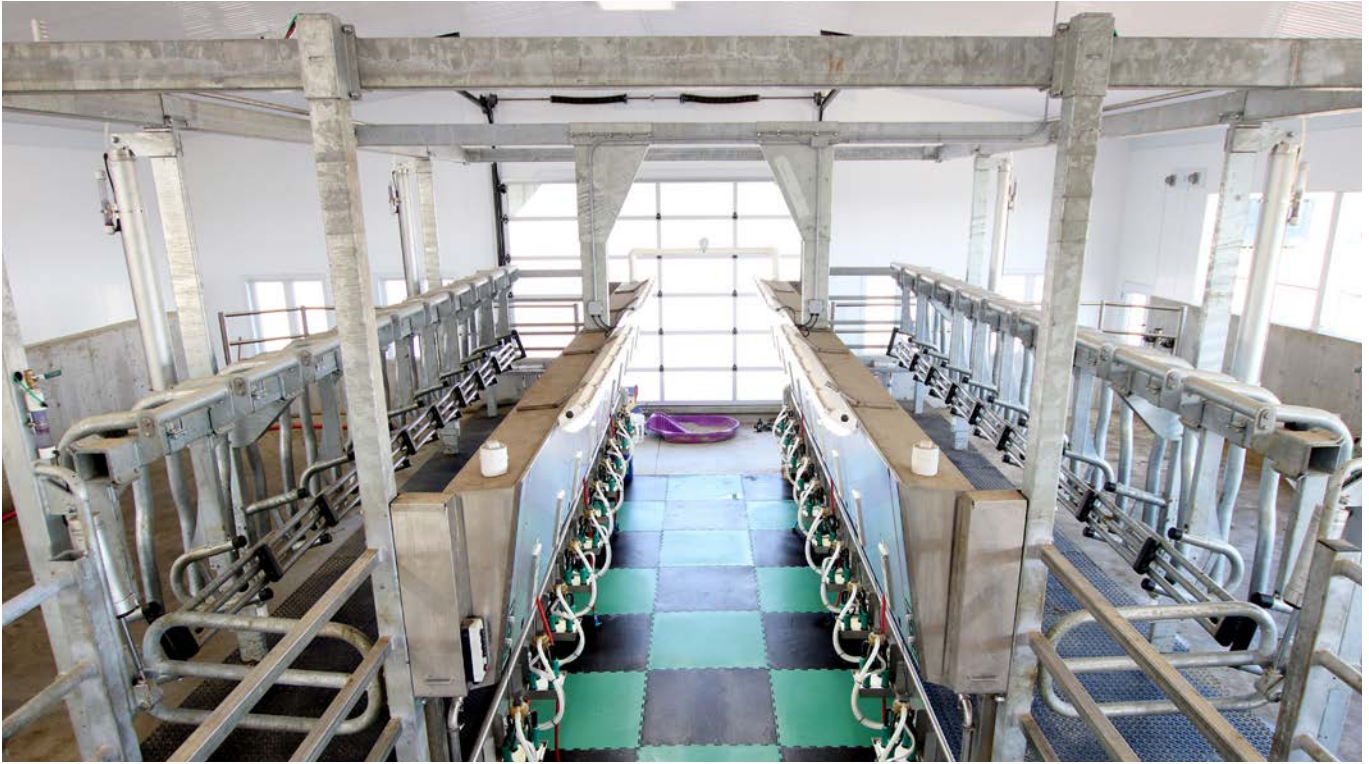
No springs and  
new 3-bar design

*Optimized sequence gate geometry minimizes cow-side contact when lifting for a safe and comfortable cow environment.*

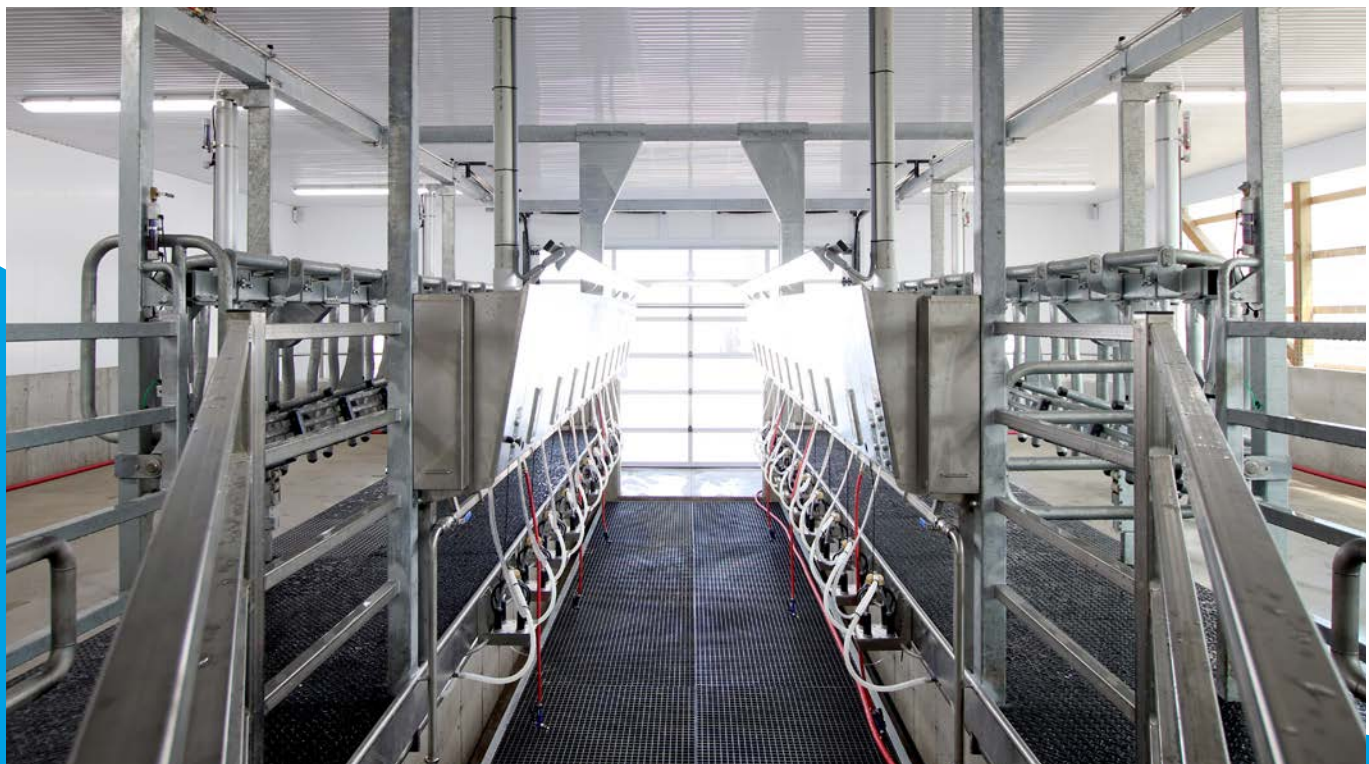


*Set the stage for a comfortable milking process. A wide-open unobstructed path for cow entrance is one of the best ways to get the most milk out of your cows.*

# Installation Gallery



*Double-10 installation shows hot dip galvanized super structure and overall heavy-duty construction for years of reliable milking performance.*

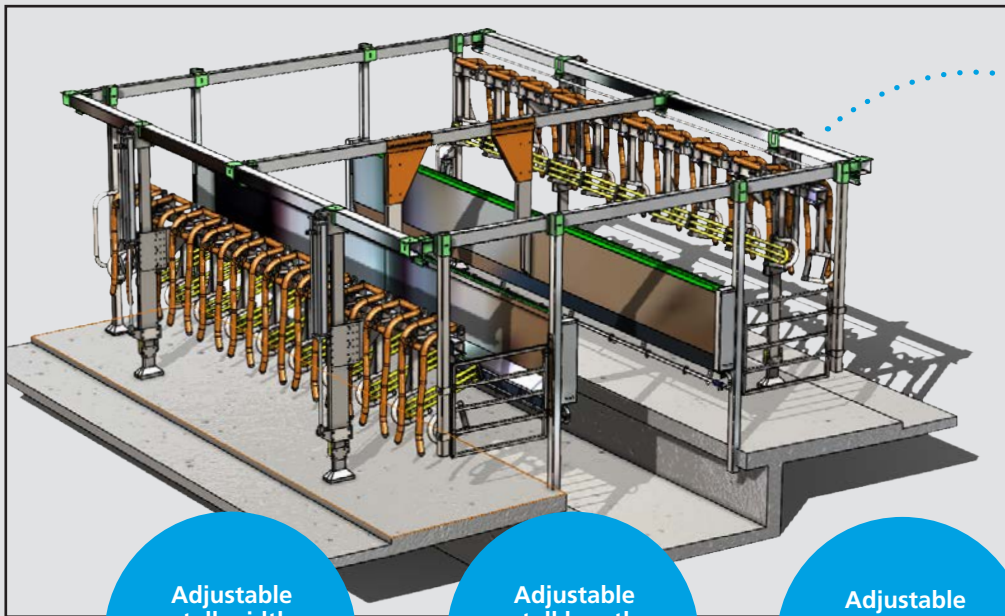


*A smooth entry into the parlor stall with optimized sequence gate design promotes fast loading and efficient throughput.*

# Customized 3D Barn Layouts

Every parlor project is unique. Our stall designs are adjustable to meet your farm's requirements. Choose from a double (or single) 6 through 80 and we'll show you the future of your milking operation.

## GEA Magnum LPS



**Individual Indexing**  
**Minimum Ceiling**  
**Height = 10 ft.**  
(can be lowered if cow clearance is reduced)

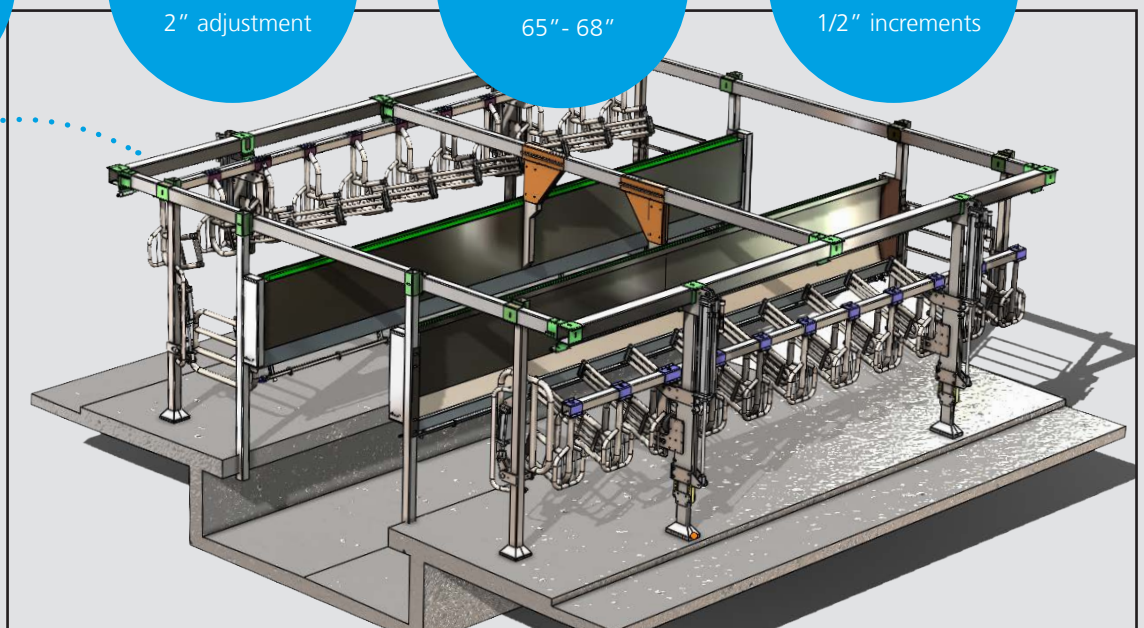
**Adjustable stall width**  
27" - 30"

**Adjustable stall length**  
2" adjustment

**Adjustable lift rail height**  
65" - 68"

**Adjustable indexing**  
1/2" increments

**Group Indexing**  
**Minimum Ceiling**  
**Height = 8 ft. 5 in.**  
(can be lowered if cow clearance is reduced)



## GEA Global LPS



## We live our values.

Excellence • Passion • Integrity • Responsibility • GEA-versity

GEA is a global technology company with multi-billion euro sales operations in more than 50 countries.

Founded in 1881 the company is one of the largest providers of innovative equipment and process technology.

GEA is listed in the STOXX® Europe 600 Index. In addition, the company is included in selected MSCI Global Sustainability Indexes.

### GEA North America

GEA Farm Technologies, Inc.

1880 Country Farm Drive, Naperville, IL 60563

Toll Free: 1.877.WS.DAIRY or 1.877.973.2479

GEA Farm Technologies Canada Inc.

4591 boulevard St-Joseph, Drummondville, QC J2A 0C6

Toll Free: 1.877.WS.DAIRY or 1.877.973.2479

[gea.com](http://gea.com)