



Credit: Dave Coombs/TSM

# On Tap: EPA Brownfields Programs

A Discussion of Brownfield Job Training and Grant Programs

Mohawk Valley Brownfields Redevelopment Summit

April 23, 2024

Workforce Development Board of Madison,  
Herkimer, and Oneida Counties



# WORKFORCE DEVELOPMENT, JOB TRAINING, AND MOHAWK VALLEY

Schenine Mitchell  
Brownfields Coordinator, EPA Region 2

# Brownfield Job Training Grants



Workforce Development Board of Madison, Herkimer, and Oneida Counties

Brownfield Job Training grants allow nonprofits and other eligible organizations to recruit, train, and place residents of marginalized communities living in areas impacted by brownfields into environmental jobs.

Residents learn the skills needed to secure full-time, sustainable employment in the environmental field, including assessment and cleanup activities. These green jobs reduce environmental contamination and build more sustainable futures for communities.

Equally important, is the goal of providing realistic EJ solutions and creating community wealth and reducing economic barriers.

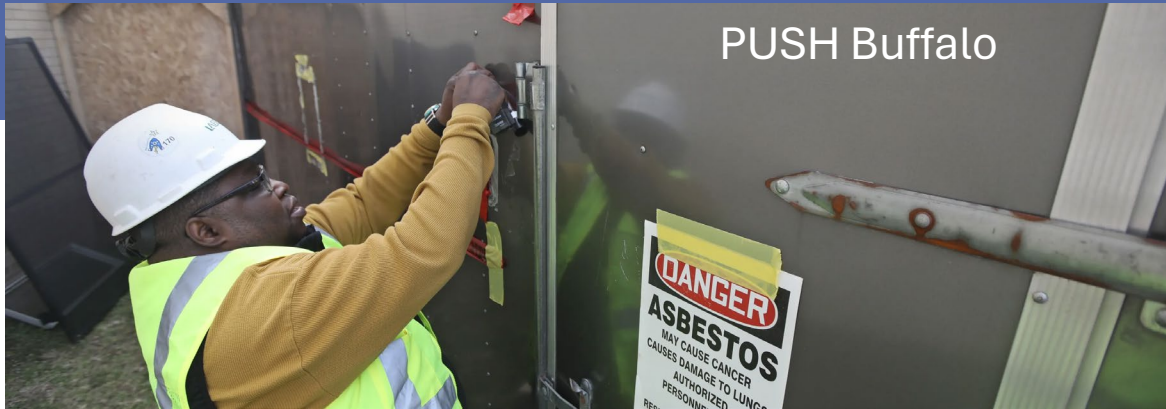
# Brownfields Job Training Grant Highlights

St. Nicks Alliance



- Under BIL, EPA awards Brownfields Job Training Grants of up to \$500,000 each with 5-year project periods.
- Approximately, 20-25 grants can be awarded each year nationally.
- Grant funds cannot be used to pay for administrative or indirect costs, including overhead costs. These costs must be leveraged through in-kind assistance or through commitments from partnering organizations.
- Grant funds may not be used to pay for training in the trades, such as training in construction or plumbing.
- For-profit organizations are not eligible to apply.
- Applicants must have partnerships in place with local employers that will interview or hire graduates and community-based organizations that will provide support services for trainees.
- Grants must target unemployed or severely underemployed residents of local communities and are not intended to serve individuals who already have an advanced education.

# Who Is Eligible?



## For Brownfields Job Training Funding

- Non-profits
- States, Municipalities, Counties, Tribes and Quasi-Governmental Entities
- Colleges and Universities



## For Brownfields Job Training Programs

- Unemployed and under-employed residents impacted by brownfields
- Sensitive populations
- Hard to employ populations: veterans, formerly incarcerated, etc.
- Ages 17 and over recommended

City of Rochester, NY



**Graduations instill a sense of pride and fulfillment in trainees!!!**

**Completion of training programs lead to eventful graduations!!**

Fortune Society, Inc.



# Job Training Considerations

**There are several factors to consider when establishing job training and workforce development in a community.**

**EPA funding is limited to recruitment, training, and placement of community residents in selected environmental disciplines.**

**Funding for student support and non-environmental training (e.g., life skills training) is often provided through leveraged resources and strong partnerships.**

**Support from local government, community organizations, and residents is essential for job training success.**

**Job opportunities for program graduates must be clearly identified and demonstrated for sustainable employment. Job market research can be an employment asset.**

**Communication and support from the employer boosts placement goals. The placement rate for the Brownfields Job Training Program on the national level is currently 72%.**

# WHAT DOES ENVIRONMENTAL WORKFORCE DEVELOPMENT LOOK LIKE???

| Air Quality  | Emergency Preparedness & Response  | Energy Technology Services  | Environmental Information & Collection  | Environmental Laboratory Services   | Environmental Site Management  |
|--|--|---|---|---|--|
| <ul style="list-style-type: none"> <li>*Air Process Tech</li> <li>*Air Quality Tech</li> <li>*Ambient Air Monitoring Tech</li> <li>*Geospatial Tech</li> <li>*Greenhouse Gas Emissions Specialist</li> <li>*Indoor Air Quality Tech</li> </ul> | <ul style="list-style-type: none"> <li>*First Responder Emergency Planning Specialist</li> <li>*Hazardous Materials Tech/Trainer</li> <li>*Homeland Security Specialist</li> <li>*Emergency Preparedness and Response Trainer</li> </ul> | <ul style="list-style-type: none"> <li>*Buying &amp; Selling Energy Tech</li> <li>*Energy Assessment Tech</li> <li>*Energy Efficient Building Project Manager</li> <li>*Regulatory Compliance Tech</li> <li>*Exploration &amp; Extraction Tech</li> </ul> | <ul style="list-style-type: none"> <li>*Environmental Education &amp; Outreach Tech</li> <li>*Environmental Database Tech</li> <li>*Environmental Compliance Tech</li> <li>*Geospatial Tech</li> <li>*Logistics Tech</li> </ul> | <ul style="list-style-type: none"> <li>*Biofuels Tech</li> <li>*Biological/ Microbio Lab Tech</li> <li>*Analytical Lab Tech</li> <li>*Instrument Tech</li> <li>*QA/QC Specialist</li> <li>*Sample Collection &amp; Preparation Tech</li> <li>*Soil Analyst</li> </ul> | <ul style="list-style-type: none"> <li>*Asbestos tech Compliance Tech</li> <li>*Environmental Site Assessor</li> <li>*Field Services Tech</li> <li>*Geology Tech</li> <li>*Geospatial Tech</li> <li>*Hazardous Materials Tech</li> <li>*Land Survey Tech</li> <li>*Land Use Planning Tech</li> </ul> |



# ADDITIONAL JOB CATEGORIES

| Natural Resources Management   | Safety & Health   | Solid & Hazardous Waste Management  | Sustainability  | Wastewater Management  | Water Supply & Treatment  |
|--|---|---|---|--|---|
| <ul style="list-style-type: none"> <li>*Habitat Tech</li> <li>*Fisheries Tech</li> <li>*Forestry Tech</li> <li>*Irrigation Tech</li> <li>*Conservation Officer</li> <li>*Agriculture Specialist</li> <li>*Botany Tech</li> <li>*Horticultural/ Landscape Tech</li> <li>*Fire Resources Tech</li> <li>*Parks &amp; Recreation Tech</li> </ul> | <ul style="list-style-type: none"> <li>*Chemical Hygiene Officer</li> <li>*Compliance Officer</li> <li>*Hazardous Materials Tech</li> <li>*Health &amp; Safety Tech</li> <li>*Loss Control/ Prevention Tech</li> <li>*Industrial Hygiene Specialist</li> <li>*Risk Manager</li> </ul> | <ul style="list-style-type: none"> <li>*Biohazard Tech</li> <li>*Hazardous Waste Tech</li> <li>*Household Hazardous Waste Tech</li> <li>*Landfill Tech</li> <li>*Recycling Tech</li> <li>*Solid Waste Tech</li> <li>*Waste Reduction Tech</li> <li>*Waste –to- Energy Tech</li> </ul> | <ul style="list-style-type: none"> <li>*Green Product Specialist</li> <li>*LEED Tech</li> <li>*Smart Growth Tech</li> <li>*Sustainability Coordinator</li> <li>*Sustainability Analyst</li> <li>*Transportation &amp; Logistics Specialist</li> </ul> | <ul style="list-style-type: none"> <li>*Biosolids Management Tech</li> <li>*Graywater Systems Treatment Operator</li> <li>*Municipal Wastewater Treatment Officer</li> <li>*Plant Maintenance Tech</li> <li>*Wastewater Collections Officer</li> </ul> | <ul style="list-style-type: none"> <li>*Desalination Tech</li> <li>*Drinking Water Lab Tech</li> <li>*Industrial Water System Operator</li> <li>*Public Educator</li> <li>*Source Water Protection Specialist</li> <li>*Water Meter Tech</li> <li>*Water Rights Tech</li> </ul> |

# Workforce Development Benefits for Mohawk Valley



## Protecting Human Health and the Environment

Job Training Programs build community capacity and education on safety, public health, and the environment .



## Providing Stable Employment

Trainees are placed in environmental employment at or above minimum wage to work on local projects.



## Building Community and Employer Partners

Partnerships help to leverage additional resources to support the job training programs.



## Boosting the Local Economy

Employment allows residents to buy goods and services that help support local businesses.

# BROWNFIELD GRANTS IN THE MOHAWK VALLEY AREA

| Grant Recipient   | Grant Year  | Grant Type                      | Award Amount     |
|---|-------------|---------------------------------|------------------|
| City of Rome  | 1996        | Assessment                      | \$200,000        |
| City of Utica   | 1998        | Assessment                      | \$200,000        |
| City of Johnstown   | 1999        | Assessment                      | \$200,000        |
| City of Schenectady   | 1999        | Assessment                      | \$200,000        |
| City of Oneonta   | 2003        | Assessment                      | \$200,000        |
| City of Rome  | 2004        | Assessment                      | \$200,000        |
| Schenectady County  | 2004        | Assessment                      | \$350,000        |
| Workforce Development Board of Madison, Herkimer, and Oneida Counties | <b>2010</b> | <b>Brownfields Job Training</b> | <b>\$200,000</b> |
| City of Rome  | 2011        | Cleanup                         | \$200,000        |
| City of Rome  | 2016        | Cleanup                         | \$200,000        |
| Herkimer County IDA   | 2018        | Assessment                      | \$200,000        |
| Gloversville  | 2019        | Assessment                      | \$300,000        |
| Greater Mohawk Valley Land Bank                                       | 2021        | Multipurpose                    | \$800,000        |
| MVEDGE  | 2021        | Assessment                      | \$300,000        |
| Gloversville  | 2022        | Assessment                      | \$500,000        |
| Herkimer County IDA   | 2022        | Assessment                      | \$500,000        |
| MVEDGE  | 2022        | Revolving Loan Fund             | \$1 million      |
| Mohawk Valley Economic Development District                           | 2023        | Revolving Loan Fund             | \$1 million      |
| Workforce Development Board of Madison, Herkimer, and Oneida Counties | <b>2024</b> | <b>Brownfields Job Training</b> | <b>\$500,000</b> |

# The Value of Job Training in Mohawk Valley

**Bossert Site, Utica (before)**



+

**Training and Certifications**



=

**Bossert Site, Utica (after)**



- Sites in need of assessment, cleanup, and redevelopment
- Work assigned to environmental contractors and developers

- Establishing a local labor force
- Developing skills to match employer needs
- Employer incentives to hire

- A smooth track to redevelopment
- Developing pathways out of poverty
- Offering sustainable employment in the environmental field

\*Image courtesy of the Utica Observer Dispatch

# A Few Words From Our FY24 Brownfields Job Training Grant Recipient



---

**The Workforce Development Board, Herkimer, Madison, Oneida  
Counties, Inc.**

# **EPA Brownfields Grants Introduction & Highlighting the Revolving Loan Fund (RLF) Program**


Mohawk Valley Brownfields Redevelopment Summit 2024

*Patrick Peck – Region 2 RLF Coordinator*





## **How does EPA help communities address Brownfields?**

- Brownfields grants continue to serve as the foundation of EPA's Brownfields Program. These grants support revitalization efforts by funding environmental assessment, cleanup, and job training activities.
- 



# Brownfield Grant Types

---

[Brownfields Assessment Grants](#) provide funding for Brownfields inventories, planning, environmental assessments, and community outreach.

---

[Brownfields Cleanup Grants](#) provide funding to carry out cleanup activities at brownfield sites owned by the applicant.

---

[Brownfields Multipurpose Grants](#) provide funding to conduct a range of eligible assessment and cleanup activities at one or more brownfield sites in a target area.

---

[Brownfields Revolving Loan Fund Grants](#) provide funding to capitalize loans that are used to clean up brownfields.

---

[Brownfields Job Training Grants](#) provide environmental training for residents of Brownfields communities.

---

# Who Is Eligible to Receive EPA Brownfields Funding?

**Multipurpose Grants, Community-wide Assessment Grants, and RLF Grants – eligible entities include:**

- State, local, and federally recognized Tribal governments (except for Indian Tribes in Alaska), a range of government entities, including general purpose units of local governments, land clearance authorities or other quasi-governmental entities operating under the supervision and control of, or as their agents; or redevelopment agencies created or sanctioned by a state; and regional councils of governments.
- Alaska Native Regional Corporations and Alaska Native Village Corporations,
- Nonprofit organizations described in section 501(c)(3) of the Internal Revenue Code.
- Limited liability corporations in which all managing members are 501(c)(3) nonprofit organizations
- Limited partnerships in which all general partners are 501(c)(3) nonprofit organizations
- Qualified community development entities as defined in section 45D(c)(1) of the Internal Revenue Code.



# Monetary amounts & Award timelines

Different Grant types have different max awards:

- Community-wide Assessment - \$500,000
- Assessment Coalition - \$1,500,000
- Community-wide Assessment Grants for states and tribes - \$2,000,000
- Cleanup grants - \$500,000 - \$5,000,000
- Multipurpose & Revolving Loan Funds (RLF) - \$1,000,000

Competition to open near the end of September 2024

Applications expected to be due sometime around November 2024

Notification of awards to occur early 2025

New

# Infrastructure Investment and Jobs Act

## Additional funding available, FY22-26

Congress has made more than \$1.5 billion available over 5 years to support communities in their efforts to assess, clean up and safely reuse brownfields.

- \$1.2 Billion to support brownfields projects via grants and technical assistance
- \$300 Million to State and Tribal Response Programs

EPA is using these funds to provide a range of resources to help communities address the environmental, economic, and social challenges caused by brownfields.

Environmental  
challenges



Economic  
challenges



Social challenges

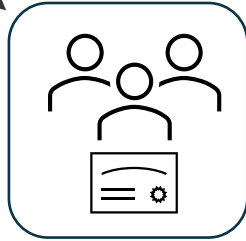


A photograph of a person in a black wetsuit standing on a rocky shore covered in driftwood. The background is a forest with trees showing autumn foliage in shades of yellow, orange, and green. The text "REVOLVING LOAN FUND PROGRAM" is overlaid in white, bold, sans-serif font across the middle of the image.

# REVOLVING LOAN FUND PROGRAM



EPA Awards RLF



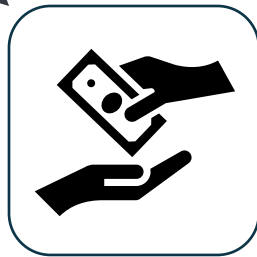
### RLF Recipient

EPA awards an eligible entity an RLF grant after the evaluation/selection process.

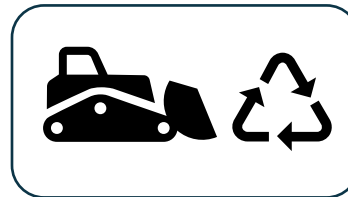
- A successful RLF can continue to provide capital within a community for decades.
- Grantee markets RLF to target multiple brownfield cleanups within a community.
- Grantee manages RLF with periodic reporting to EPA until funds are depleted & program income ends.

### Subaward

Grantee provides low-interest loans (min. 50% of EPA Award) and subgrants to carry out brownfields cleanups activities.



### Leveraged Funding



Brownfield



### Program Income

As loans are repaid, the loan amount is returned to the fund and can be loaned to other borrowers, providing an ongoing source of capital within a community.

- Repaid interest on the loan grows the RLF overtime.
- The revolved fund promotes ongoing community Brownfield activity.



# Eligible uses with RLF Funds

- Removal of hazardous substances
- Installing site security
- Analysis of Brownfield Cleanup Alternatives
- Community engagement
- Establishing administrative records
- Programmatic costs
- Phase I and Phase II reports (Only once in post-closeout)



# What types of hazardous substance contamination are eligible for funding?

Sites eligible for funding are those sites with the presence or potential presence of hazardous substances, pollutants, or contaminants, sites contaminated with controlled substances, and/or mine-scarred lands. The types of contaminants that can be addressed using brownfields hazardous substances funding include, but are not limited to the following:

- heavy metals
- petroleum
- polynuclear aromatic hydrocarbons (PAHs)
- volatile organic compounds (VOCs)
- brine
- lead
- asbestos (\*may require meeting certain conditions)
- mold contamination
- a site contaminated with controlled substances (e.g., a methamphetamine laboratory)
- polychlorinated biphenyl (PCBs)
- per and polyfluoroalkyl substances (PFAS)



# EPA REGION 2 STAFF



**Terry Wesley**  
Section Manager  
Wesley.Terry@epa.gov  
(212) 637-5027

**Schenine Mitchell**  
Brownfields Coordinator  
Mitchell.Schenine@epa.gov  
(212) 637-3283

**Ashita Patel**  
State & Tribal Coordinator  
Patel.Ashita@epa.gov  
(212) 637-4372

**Patrick Peck**  
Revolving Loan Fund  
Coordinator  
Peck.Peck@epa.gov  
212 637-4421

**Yocasta DeJesus**  
Outreach Coordinator  
DeJesus.Yocasta@epa.gov  
(212) 637-4340

**Zolyamar Luna**  
Caribbean Coordinator  
Luna.Zolyamar@epa.gov  
(787) 977-5844

**Ricardo Berrios-Perez**  
Integration Coordinator  
Berrios-Perez.Ricardo@epa.gov  
212 637-5033

**Griztko Erickson**  
GIS Coordinator NY  
Erickson.Griztko@epa.gov  
212 637-4972

**Sadira Robles**  
Land Revitalization Program  
Coordinator  
Robles.Sadira@epa.gov  
(212) 637-4318

**Jenny Tsolisos** Brownfields  
Project Officer  
Tsolisos.Jenny@epa.gov  
(212) 637-4349

**Valerie Rivera-Nieves**  
GIS Coordinator PR  
RiveraNieves.valerie@epa.gov  
787 977-5827