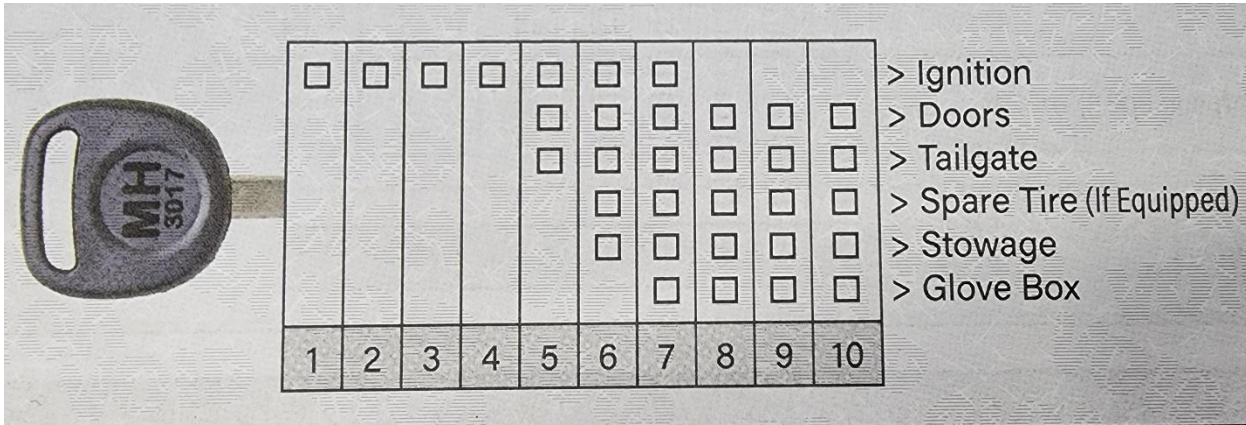
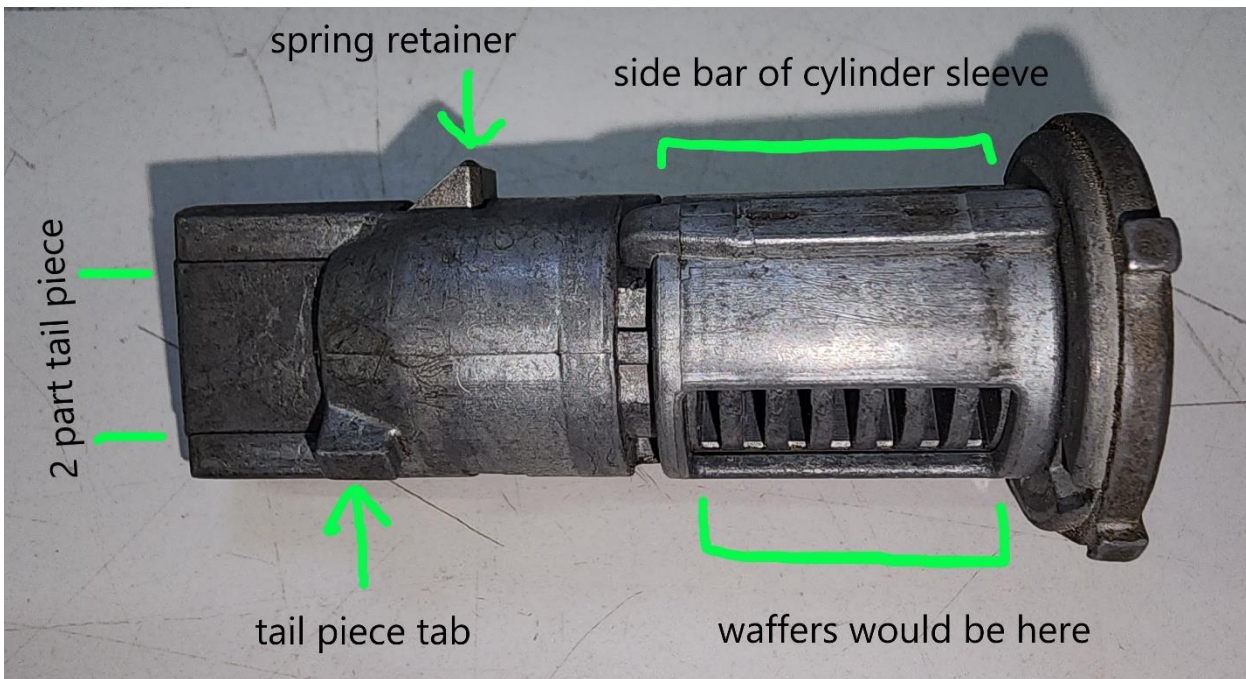


GM HU100 truck bodies.

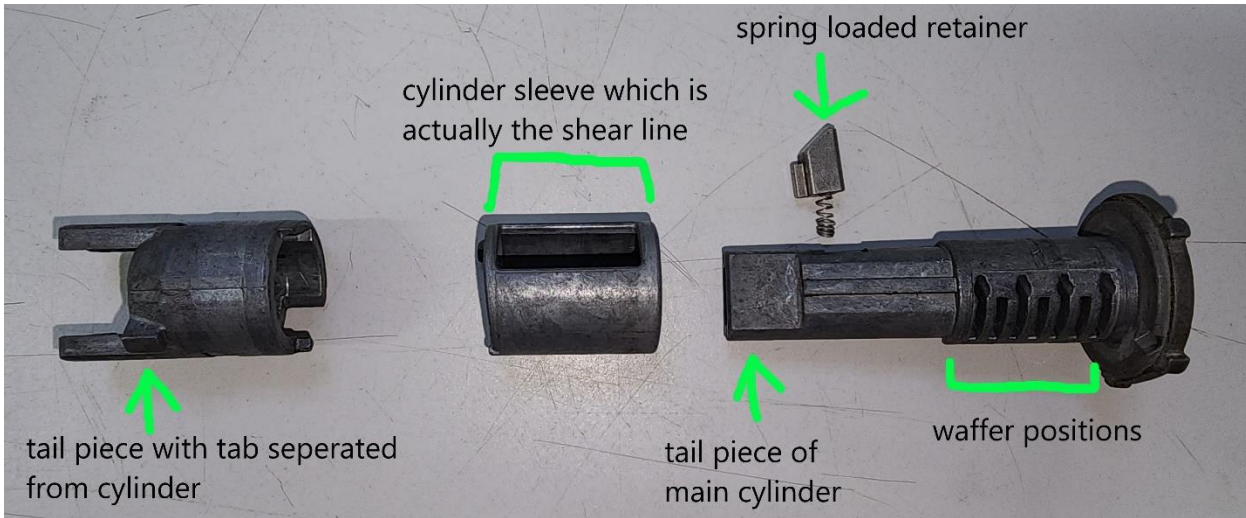
Wafer positions



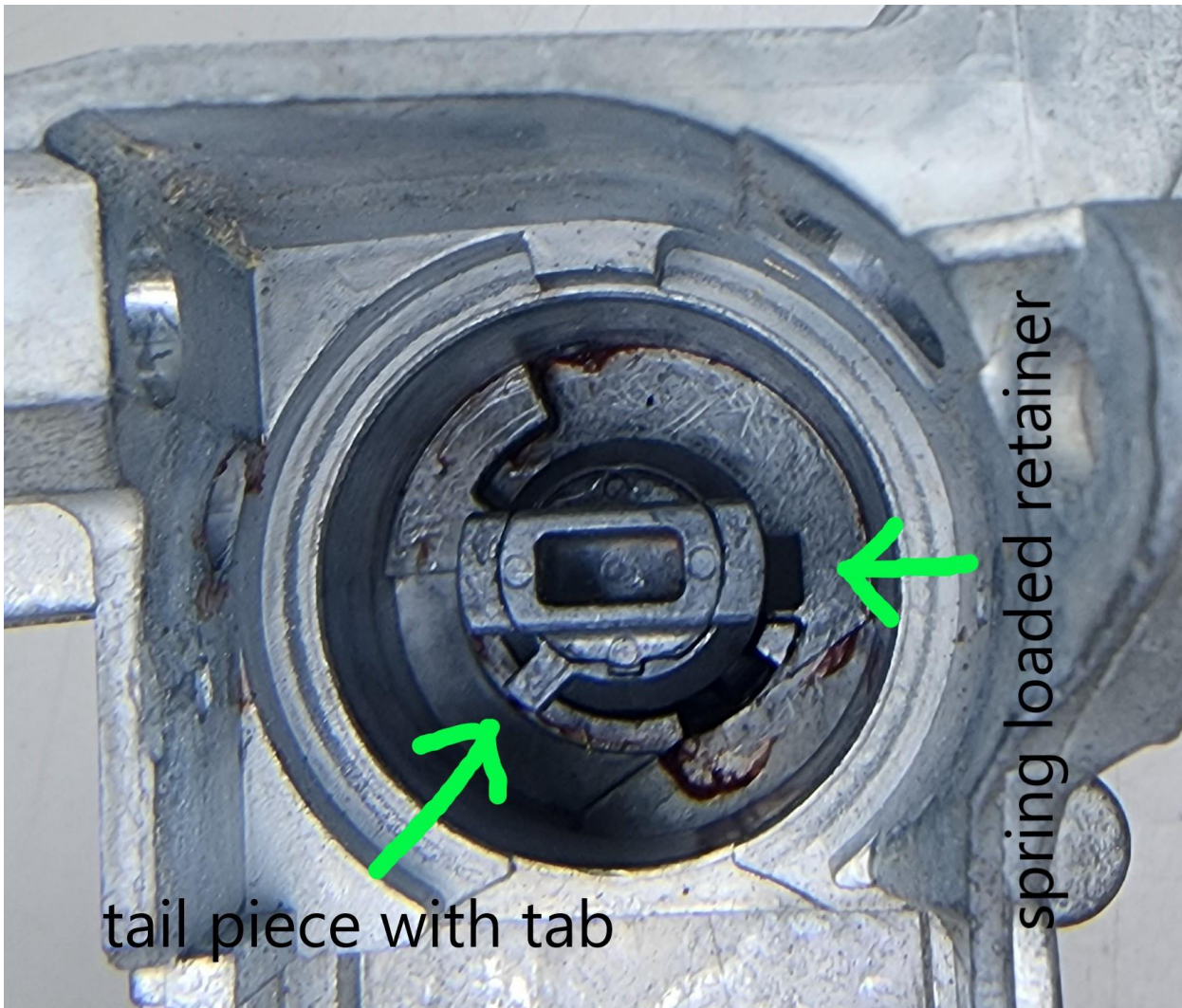
Assembled cylinder without wafers.



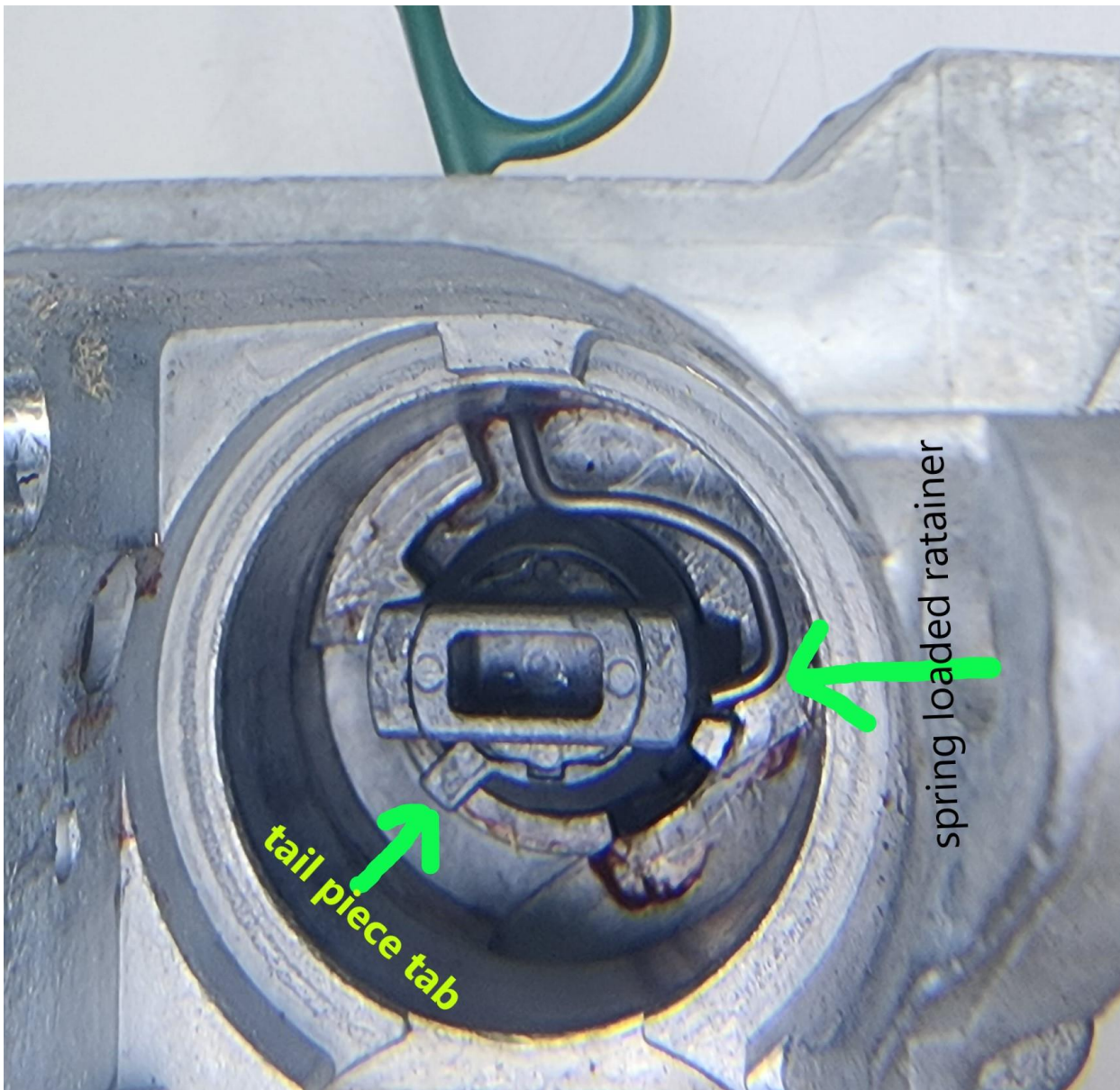
Disassembled cylinder (there is also a key buzzed button, not in pic, that is part of the cylinder)



View of tail piece of cylinder inside housing from rear of lock in off position and can only rotate



Same view but with a HU100 v2 tool in position to press the spring loaded retainer.



If the spring-loaded retainer is depressed so that it is flush with the outside of the cylinder. The cylinder will release from the housing, but not be able to remove fully from housing because of the tab on the tail piece is not in correct position.

The spring-loaded retainer must be depressed below the tail piece sleeve to be able to separate.

Sometimes the tail piece is very snug fit and is not loose fitting to cylinder and mild force is needed to separate them. A flat head screwdriver tip placed between cylinder face and housing wall and twisted works well.

