

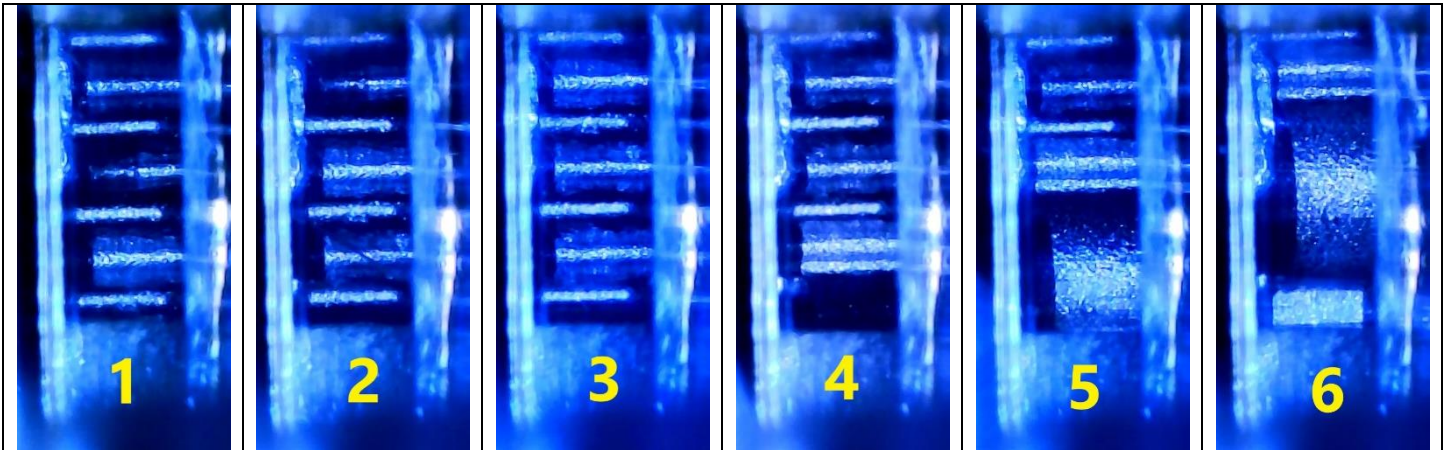
LTKSD & Kwikset GEN 5 locks

INFORMATION AND VISUAL REFERENCE

Gen 5 version of the kwikset Smart Key lock started showing up beginning around February of 23.

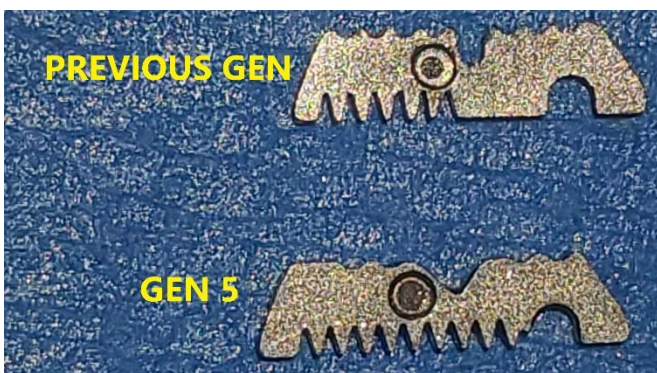
These Gen 5 locks do have a significant difference to the wafers that will inhibit decoding of the 1, 2, & 3 cut depths using the LTKSD. 4, 5, & 6 depth wafers will look a little different than typical GEN 1-4 wafers that are 4, 5, & 6 depths. However, they do have distinct differences that will allow decoding using the LTKSD. (see pic at bottom)

Below are the images that you can expect to see using the LTKSD on GEN 5 locks. As you can see the 4, 5, & 6 depths look different than previous generations however they do still look distinctly different from each other.



We do have a solution for this in the works that will allow for decoding all depth positions on the GEN 5 locks that will be used in conjunction with your current LTKSD.

In the meantime, and as a temporary solution, these locks can be progressed if there are not more than 3 positions that contain either 1's, 2's, or 3's. Once you get to 4 positions having 1, 2, or 3's progressing is not a very viable solution.



Here is a comparison of wafers between the previous GEN and GEN 5.

Hope this helps.

LockTech Team