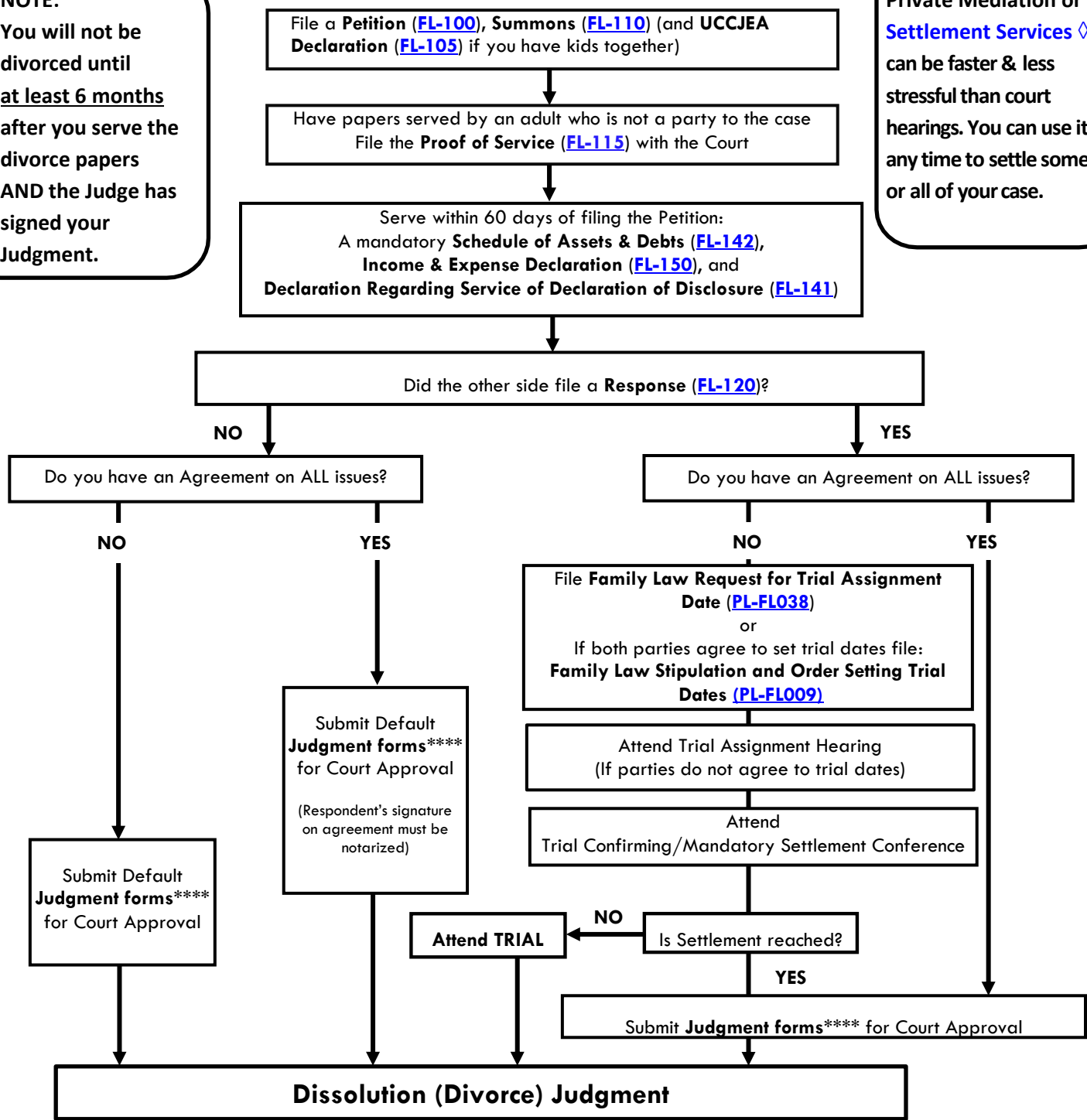


# DIVORCE\* CASE FLOW CHART\*\*

(Dissolution, Legal Separation and Nullity\*\*\*)

**NOTE:**  
You will not be divorced until at least 6 months after you serve the divorce papers AND the Judge has signed your Judgment.

Private Mediation or Settlement Services ◇ can be faster & less stressful than court hearings. You can use it any time to settle some or all of your case.



\* Divorce here also refers to dissolution of domestic partnership.  
 \*\* This flow chart does not include the process and procedure when parties are requesting interim or temporary orders pending a final resolution of your case.  
 \*\*\* Nullities require a Court hearing and Judge's approval before a Judgment is granted.  
 \*\*\*\* Judgment forms are a set of forms to finish your case that are customized for your family. For a list of needed forms, see the Judgment Checklist (FL-182).  
 ◇ The Placer County Superior Court Self-Help Center offers Self-Help Settlement Services to assist both parties in reaching an agreement on financial issues and assistance completing Judgment forms. This service is available at no cost and when at least one party is self-represented. Form Packets for the divorce process are available at the Self-Help Center. For more information, visit [www.placer.courts.ca.gov](http://www.placer.courts.ca.gov).  
 This chart shows the basic outline of a divorce case. Please consult with an attorney for legal advice concerning your individual case. If you do not have an attorney, procedural assistance is available at the Self-Help Center, however, the Self-Help Center cannot provide legal advice. To schedule an appointment with the Self-Help Center, visit [www.placer.courts.ca.gov](http://www.placer.courts.ca.gov).