

Cel-Fi G41™ In-building Mobile Solution

5G/4G/3G Smart Signal Booster®



Performance Leadership



Ease of Install



Leaders in Value



Fast Set Up



Carrier Grade Approval

Smart Cellular Coverage Solutions for Commercial and Industrial Environments

The Cel-Fi GO G41 Smart Signal Booster is the most powerful carrier-grade solution to overcome cellular coverage issues in indoor environments. Providing up to 100 dB gain, GO G41 offers class-leading 5G/4G/3G voice and data performance. GO G41 also supports 5G NR operation for seamless network migration and consistent connectivity. In addition to providing cellular coverage up to 3,000 m² (1,500 m² in the U.K.) when configured with the included donor and server antennas, the system can be expanded with outdoor or additional server antennas for an increased coverage footprint. Plus, GO G41 is network safe and the easiest solution to install.

Industry-Leading Signal Gain

Leveraging Nextivity's award-winning IntelliBoost® chipset, which is engineered to deliver unmatched cellular performance, GO G41 provides up to 100 dB signal gain (depending on the region).

Model	Kit	Bands	Items included:
G41-9E	-001	1, 3, 7, 8, 20	<ul style="list-style-type: none"> • GO G41 Unit • Power Adaptor • Whip Antenna (A21-V33-100) • Patch Antenna with 8M Cable (A51-100-100)
	-002		
	-003		
G41-JE	-001	1, 3, 5, 7, 8, 28L, 40	<ul style="list-style-type: none"> • GO G41 Unit • Power Adaptor • Whip Antenna (A21-V33-100) • Patch Antenna with 8M Cable (A51-101-100)
	-002		
	-003		
G41-NE	-001	1, 3, 5, 7, 28U, 40	<ul style="list-style-type: none"> • GO G41 Unit • Power Adaptor
	-002		
	-003		



Maximum Gain

Industry-Leading Signal Gain up to 100 dB for 5G/4G/3G Voice and Data



Best Performance

Smart Signal Booster with IntelliBoost® Chipset Smart Technology



Cellular Coverage

Up to 3,000 m² (1,500 m² in the U.K.) per Unit for Buildings, Residential, Remote, and IoT



Ease of Set Up

6 easy steps enable quick installation for optimal system performance



Cel-Fi WAVE

Mobile Device Application for System Set Up



DSS

Support for Dynamic Spectrum Sharing






Network Safe

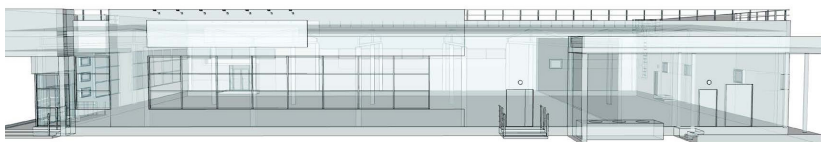
Carrier Approved with No Noise Guarantee

Cel-Fi G41™ In-building Mobile Solution

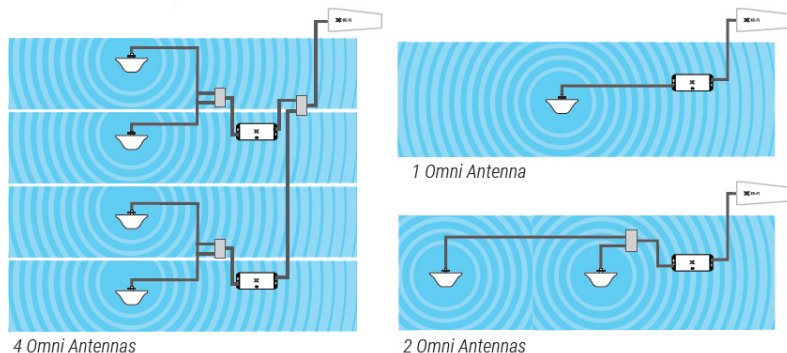
Pair the Cel-Fi GO with Cel-Fi Antennas to Create the Ideal Solution that Optimizes Performance and Streamlines Installation

 Government buildings	 Agricultural settings	 Parking garages	 IoT & M2M (Machine to machine)
 Small Manufacturing operations	 Business in single/multi-level commercial properties	 Remote or Rural Locations	 Large Homes

Combined with either Cel-Fi Omni Dome Antenna(s) for ceiling mounting or Cel-Fi Wideband Panel Antenna(s) for wall mounting, the Cel-Fi GO G41 and Cel-Fi Wideband Directional Antenna is the perfect in-building, remote, and IoT solution. Additional server antennas are available for venues with more floors or dense interior walls. The higher gain Cel-Fi LPDA-R Antenna is available for sites with weak outdoor signals.



Industry-Leading Signal Gain






Flexibility at Your Fingertips

Antenna Positioning

To optimize your antenna using real time data and achieve best possible performance, Nextivity's proprietary 8-position dial base in WAVE's Antenna Position Test allows you to compare signal strength when rotating the antenna in 45-degree increments.

Optional Antennas for Advanced Installation

	Cel-Fi Widebands Panel Antenna A52-V32-100
	Cel-Fi Widebands Directional Antenna A32-V32-200
	Cel-Fi Indoor Omni Antenna A11-V43-100
	Cel-Fi LPDA-R Antenna A62-V44-200

WAVE APP

The WAVE app provides end-users and installers the ability to monitor and manage Cel-Fi installations



6-Step Set Up

Step 1: Install Server Antennas with Cable	Step 2: Install Donor Antennas with Cable	Step 3: Mount Cel-Fi G41	Step 4: Connect Donor & Server Antennas with Splitter to the Cel-Fi G41	Step 5: Connect the AC Power Source	Step 6: Activate & Optimize Set Up with Cel-Fi WAVE
--	---	------------------------------------	---	---	---