



Centennial Airport Monthly Noise Report



September 2023

1 TABLE OF CONTENTS

- 2 Definitions..... 2
- 3 About APA’s Noise Monitoring Program 3
- 4 About WebTrak™ 4
- 5 Operations Statistics 5
- 6 Noise Monitor Reports..... 6
- 7 Noise Complaint Statistics.....7-9
- 8 Complaint Map 10
- 9 Radar Track Density Map 11
- 10 Notes and Disclaimer 12

A-weighted Sound Level – A measure of sound level with weighted frequency characteristics that correspond to human subjective response to noise.

Arrival – The act of an aircraft approaching and landing at an airport.

Ambient Noise Level – The level of noise that is all-encompassing within a given environment for which a single source cannot be determined. It is usually a composite of sounds from many and varied sources near to and far from the noise monitor.

Community Noise Event Level (CNEL) – The average sound level over a 24-hour period, with a penalty of 10dB for nighttime hours between 10:00 PM and 7:00 AM.

Day Night Average Sound Level (DNL) – A measure of the average noise level over a 24-hour day. It is the 24-hour, logarithmic (or energy) average, A-weighted sound pressure level with a 10-decibel penalty applied to the nighttime event levels that occur between 10:00 PM and 7:00 AM.

Decibel (dB) – A logarithmic quantity reflecting the ratio of the sound pressure of the source to a reference pressure. This results in a sound pressure level of about 0 dB for the quietest sounds that we can detect and sound pressure levels of about 120 dB for the loudest sounds that can be heard without pain.

Departure – The act of an aircraft taking flight and leaving the airport.

Energy-Averaged Sound Pressure Level (Leq) – The value or level of a steady, non-fluctuating sound that represents the same sound energy as the actual time-varying sound evaluated over the same time period.

Flight Track – The path along the ground followed by an aircraft in flight.

Instrument Flight Rules (IFR) Rules and regulations established by the FAA to govern flight under conditions in which flight by outside visual reference is not safe. IFR flight depends upon flying by reference to instruments, and navigation is accomplished by reference to electronic signals. It is also a term used by pilots and controllers to indicate the type of flight plan an aircraft is flying, such as an IFR or VFR flight plan.

Local Operations – Operations in the local traffic pattern or within sight of the airport; flight in local practice areas within a 20 mile radius; execute simulated instrument approaches or low airport passes.

Maximum Noise Level (L_{max}) – The peak noise level for a single noise event.

Noise Exposure – The cumulative sound energy affecting a person over a specified period of time.

Overflight – Aircraft flight originating and terminating outside the area that transits the airspace without landing.

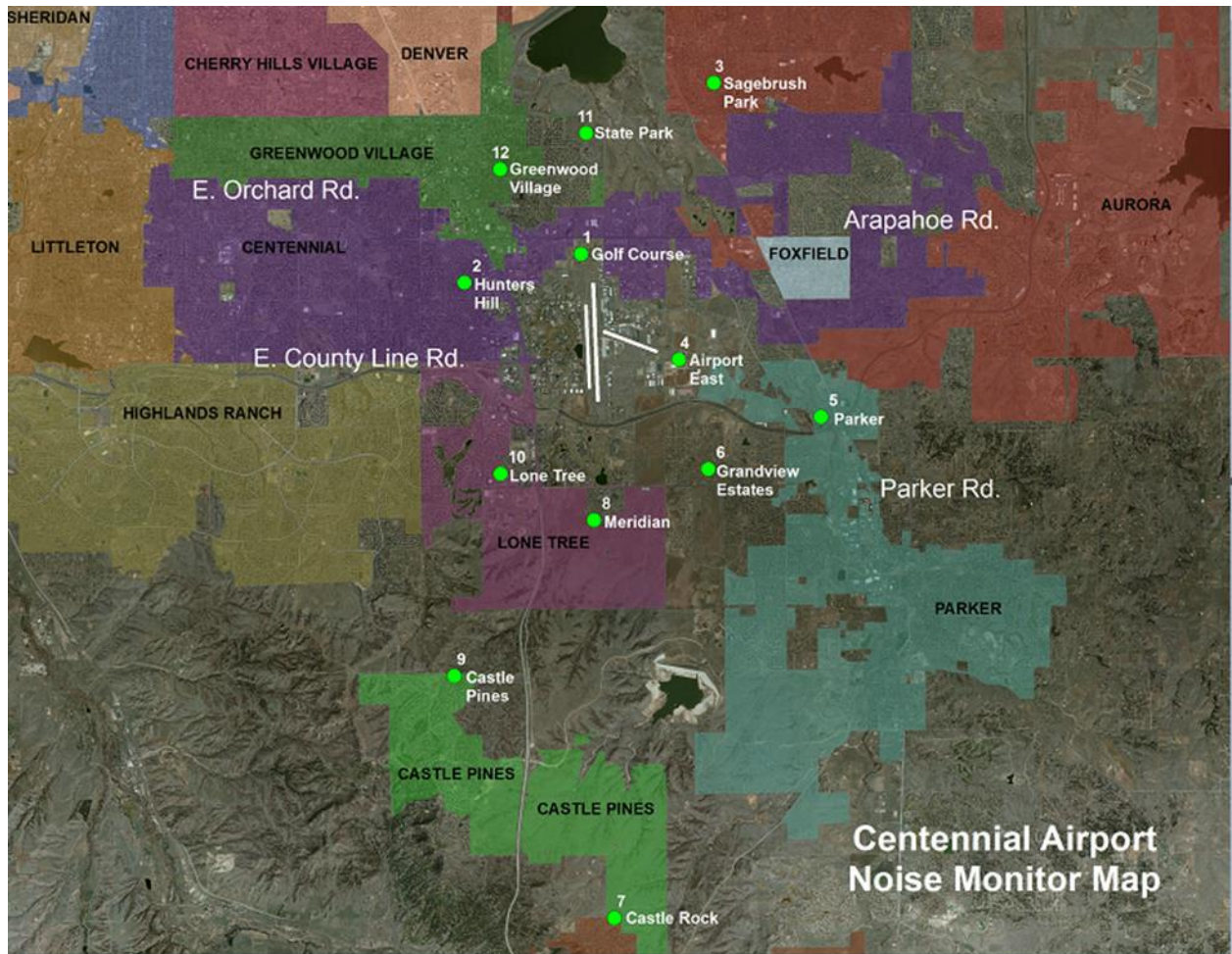
Visual Flight Rules (VFR) – A set of regulations under which a pilot operates an aircraft in weather conditions generally clear enough to allow the pilot to see where the aircraft is going. A flight plan is not required when the pilot is operating under Visual Flight Rules.

Sound Exposure Level (SEL) – The total energy in the A-weighted sound level measured during a transient noise event. SEL accounts for both the duration and the loudness of a noise event.

Overview

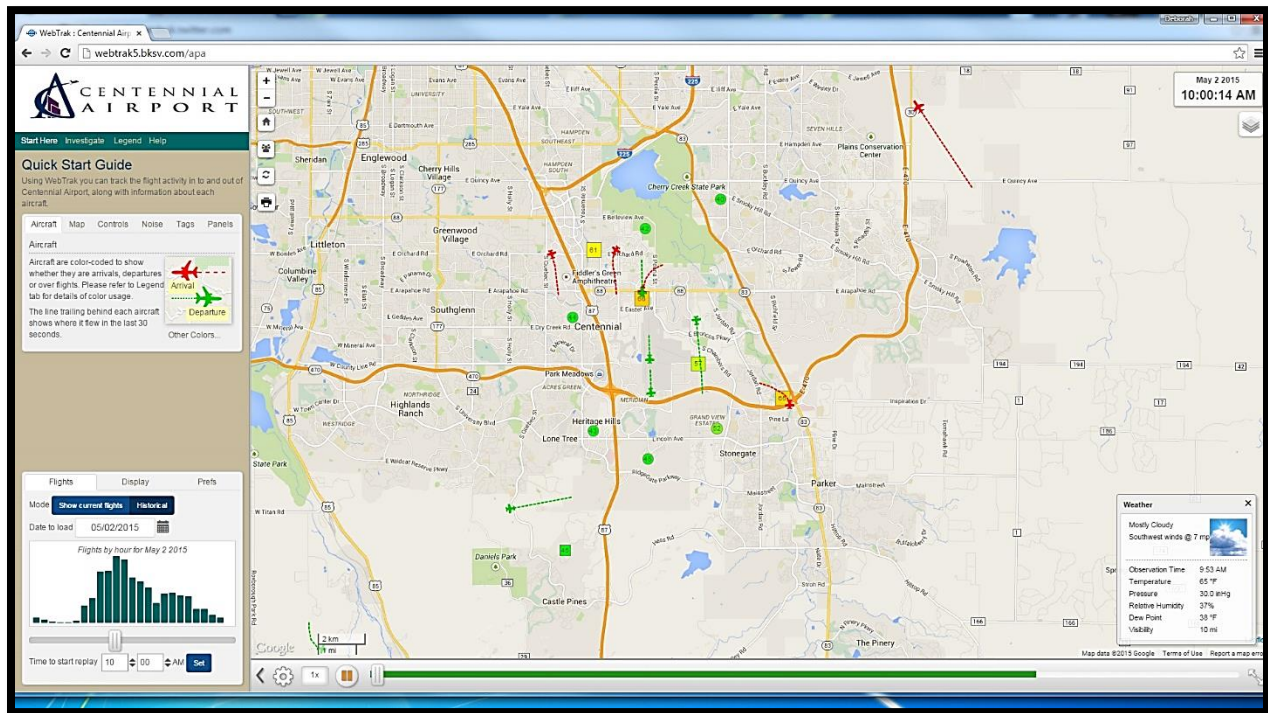
3 ABOUT APA'S NOISE MONITORING PROGRAM

Centennial Airport's (KAPA) Noise and Operations Monitoring System (ANOMS) is a new state of the art system that enables the Arapahoe County Public Airport Authority to monitor and better understand aircraft noise in the vicinity of Centennial Airport. This system is comprised of 12 fixed noise monitoring terminals in the community, as well as 2 portable monitors that are available for short term monitoring anywhere in the community.



4 ABOUT WEBTRAK™

As part of an ongoing program, Centennial Airport now offers an online tracking system for the movement of flights and air traffic patterns within the Denver Metro area. **WebTrak** Flight Tracking and Noise Information System allows concerned individuals to research data about flights to and from Centennial Airport, Denver International Airport, Rocky Mountain Metropolitan Airport, Front Range Airport and Buckley Air Force Base, as well as any transitional air traffic through the region.



How to participate

The general public may use **WebTrak** to investigate a noise or flight that occurred near their location. The system also simplifies the process of filing a noise complaint, offering an easy, online option for residents to register concerns regarding noise levels at the following web addresses:

APA WebTrak:

https://webtrak.emsbk.com/apa?fbclid=IwAR1xnXwQ2sVwisSZ_szUAIHFtyYBNI_ZTACOI1PF7ZSH8PPbBxORnnaidUUE

Centennial Airport Website: <http://www.centennialairport.com>

In addition, noise complaints can also be submitted on our noise hotline:

APA Noise Hotline:

303-790-4709

5 OPERATIONS STATISTICS

	IFR ITINERANT				VFR ITINERANT				LOCAL		
	AIR TAXI	G.A.	MILITARY	TOTAL ITINERANT	AIR TAXI	G.A.	MILITARY	TOTAL	G.A.	MILITARY	TOTAL LOCAL
January	2,304	3,055	99	5,458	896	5,213	69	6,178	11,936	25	11,961
February	2,180	2,883	123	5,186	1,046	5,388	85	6,519	12,426	20	12,446
March	2,512	3,260	187	5,959	1,555	5,523	100	7,178	14,989	20	15,009
April	2,152	2,693	144	4,989	1,616	6,550	137	8,303	16,940	40	16,980
May	2,556	3,026	175	5,757	1,542	5,734	116	7,392	17,833	21	17,854
June	2,584	3,338	165	6,087	1,544	6,277	159	7,980	16,101	31	16,132
July	2,524	3,341	189	6,054	1,999	8,004	131	10,134	18,733	53	18,786
August	2,536	3,434	245	6,215	2,283	8,727	118	11,128	21,173	29	21,202
September	2,718	3,332	198	6,248	2,293	8,159	87	10,539	17,465	43	17,508
October				0				0			0
November				0				0			0
December				0				0			0
Y-T-D Totals	22,066	28,362	1,525	51,953	14,774	59,575	1,002	75,351	147,596	282	147,878

	IFR OVERFLIGHTS				VFR OVERFLIGHTS				TOTAL OPERATIONS	
	AIR TAXI	G.A.	MILITARY	TOTAL INTINERANT	AIR TAXI	G.A.	MILITARY	TOTAL		
January	2	4	4	10	43	73	11	127	January	23,734
February	6	4	2	12	31	80	1	112	February	24,275
March	0	0	3	3	24	90	4	118	March	28,267
April	3	5	2	10	37	79	13	129	April	30,411
May	1	5	0	6	32	120	8	160	May	31,169
June	2	9	1	12	29	87	6	122	June	30,333
July	6	12	3	21	28	138	7	173	July	35,168
August	8	12	5	25	32	86	7	125	August	38,695
September	3	4	1	8	53	109	4	166	September	34,469
October				0				0	October	
November				0				0	November	
December				0				0	December	
Y-T-D Totals	31	55	21	107	309	862	61	1,232	Y-T-D Totals	276,521

Definitions

Air Taxi – A company that operates aircraft that carry cargo or mail, or passengers on an on demand or charter basis.

General Aviation (G.A.) – All civil aviation operations other than scheduled air services and non-scheduled air transport operations for remuneration or hire.

Local – Operations are performed by aircraft which operate in the local traffic pattern or within sight of the airport; flight in local practice areas located within a 20-mile radius of the airport; execute simulated instrument approaches or low passes at the airport.

IFR Itinerant – Operations other than local operations conducted under Instrument Flight Rules.

VFR Itinerant – Operations other than local operations conducted under Visual Flight Rules.

Overflight – Operation performed by aircraft that transit the area and did not originate or did not terminate within the airspace.

6 NOISE MONITOR REPORTS

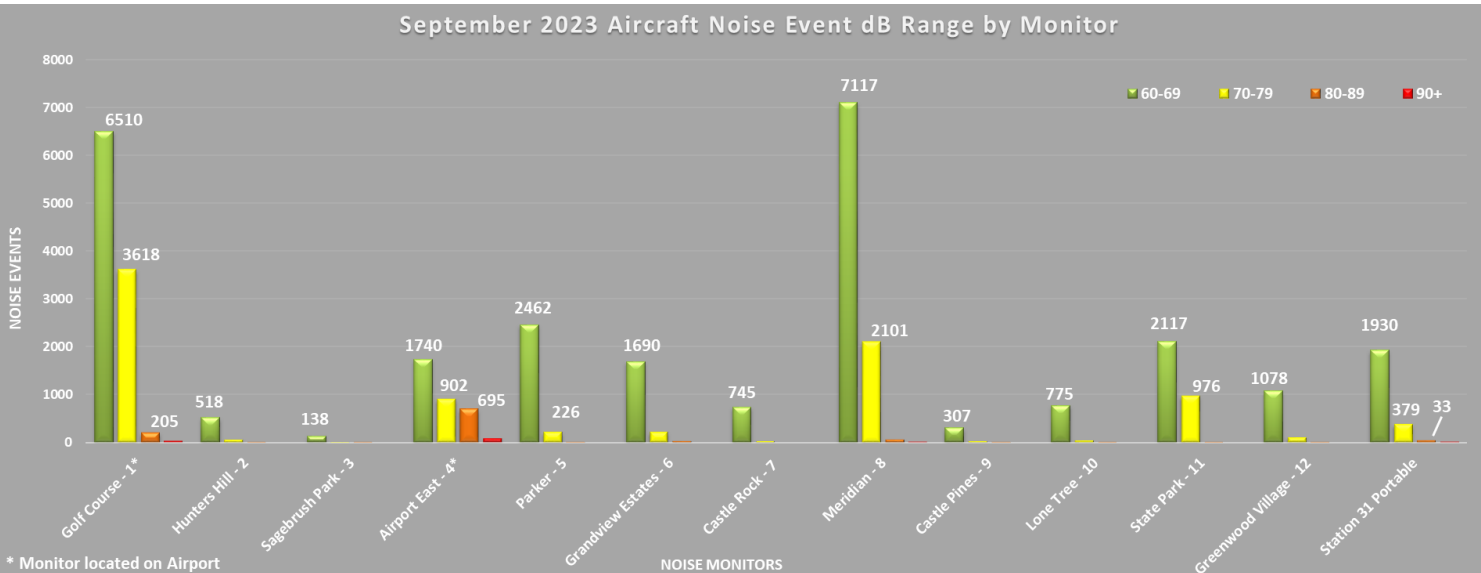
The following data displays the amount and associated decibel level of aircraft noise events at a given monitor. An aircraft noise event must contain the following characteristics:

First, the noise event must exceed the ambient noise level. This number varies at every monitor, but is generally greater than 50-55db. Secondly, the noise event must last longer than 5 seconds. Lastly, using radar data, the system must correlate an aircraft with the noise event. This ensures that the sound is not associated with a 'community noise event' such as a lawn mowers or emergency sirens.

The information below reflects only aircraft noise events as described above.

September 2023 Aircraft Noise Event Decibel Range By Monitor					
Monitor	60-69	70-79	80-89	90+	Totals
Golf Course- 1*	6510	3618	205	22	10355
Hunters Hill- 2	518	59	12	0	589
Sagebrush Park- 3	138	14	1	0	153
Airport East- 4*	1740	902	695	72	3409
Parker- 5	2462	226	2	0	2690
Grandview Estates- 6	1690	214	23	0	1927
Castle Rock- 7	745	20	0	0	765
Meridian- 8	7117	2101	64	3	9285
Castle Pines- 9	307	19	1	0	327
Lone Tree- 10	775	34	2	0	811
State Park- 11	2117	976	15	0	3108
Greenwood Village- 12	1078	107	4	0	1189
Portable Station 31	1930	379	33	3	2345
Totals	27127	8669	1057	100	36953

*Monitor located on Airport



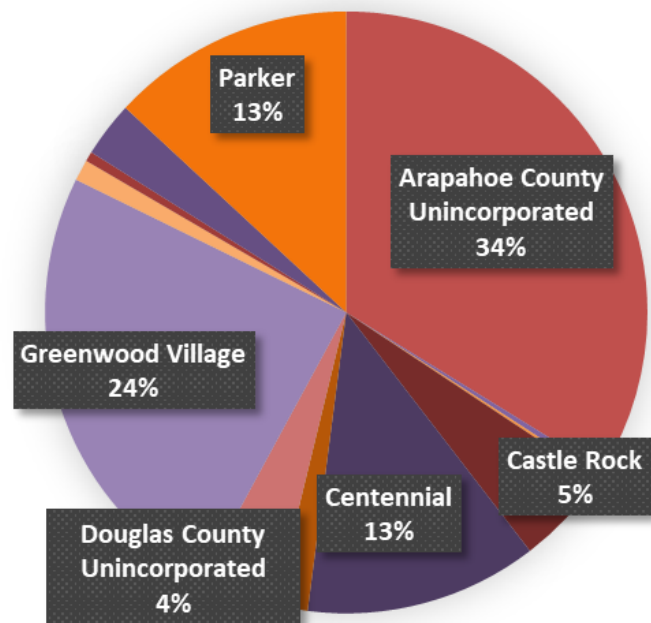
7 SEPTEMBER 2023 NOISE COMPLAINT STATISTICS

In September, Centennial Airport received 1,145 complaints from 129 households.

September Noise Complaints			YTD		Population
Municipality	Complaints	Households	Complaints	Households	Census 2020
Arapahoe County Unincorporated	387	49	3,681	169	98,066
Aurora	4	2	61	10	386,261
Castle Pines	2	2	9	4	11,036
Castle Rock	60	2	351	7	73,158
Centennial	143	7	759	18	108,418
Cherry Hills Village	0	0	0	0	6,442
Denver	20	1	138	4	715,522
Douglas County Unincorporated	47	10	338	20	276,493*
Greenwood Village	279	33	2,463	85	15,691
Highlands Ranch	13	4	46	10	103,444
Lone Tree	6	3	46	13	14,253
Parker	150	8	786	18	58,512
Other	34	8	108	28	UNK
Total	1,145	129	8,786	386	1,867,296

*Douglas County Unincorporated Population with Highlands Ranch Removed

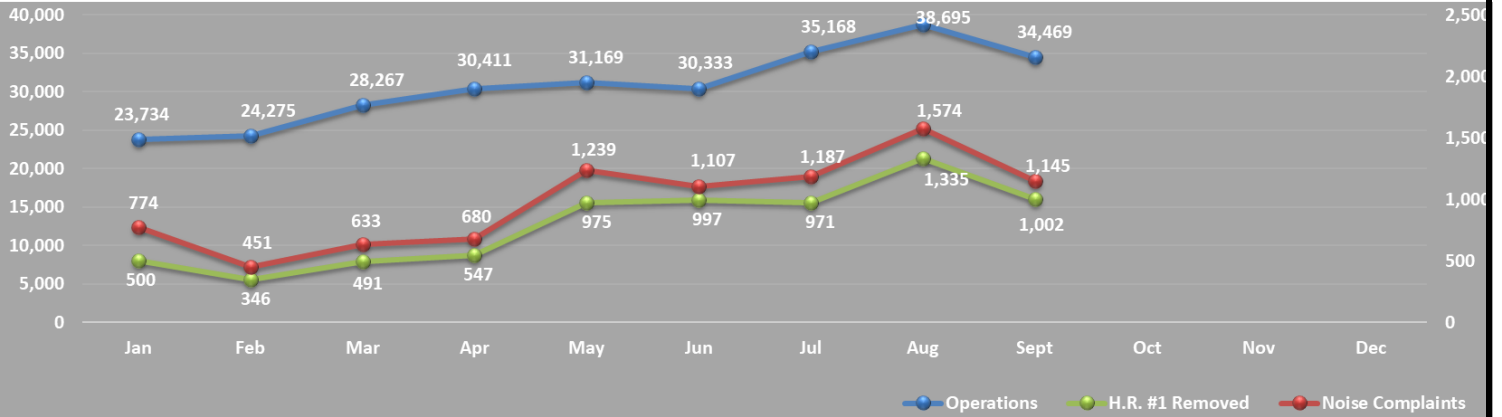
Complaints per Municipality



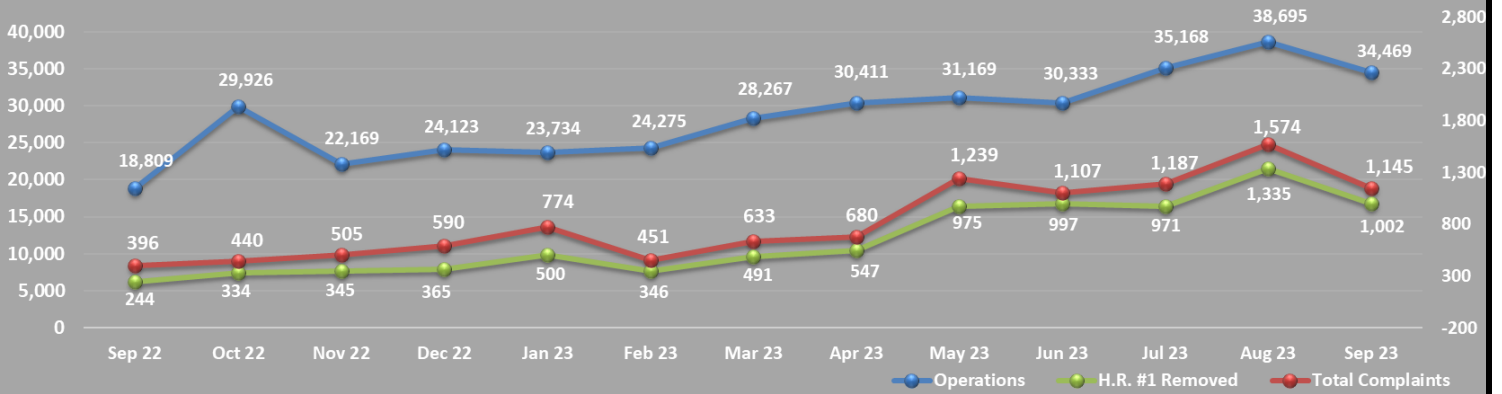
September 2023 Noise Complaint Responses Completed	
Email	72
Phone	16
Total	88

Time Complaint Received	Sept
Day Hours (7:00 am - 9:59pm)	966
Night Hours (10:00 pm - 6:59 am)	179
TOTAL	1,145

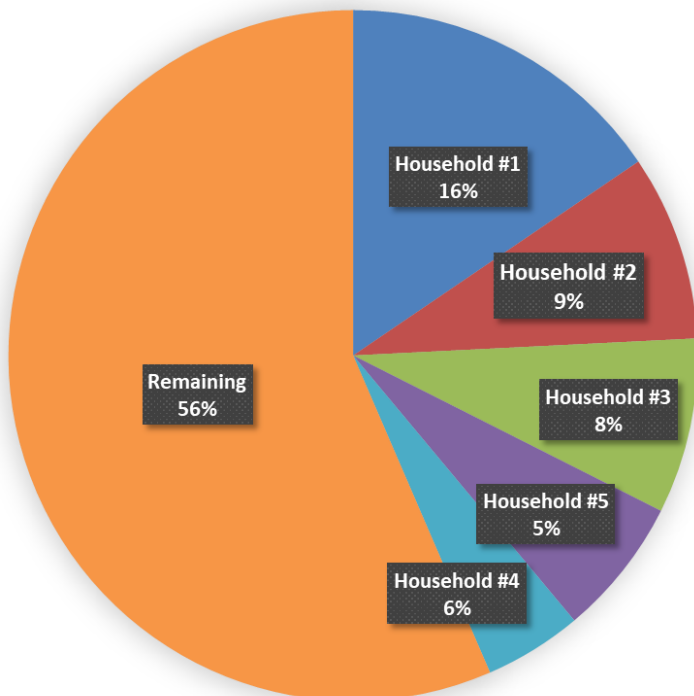
Current 12 Month Trend



Previous Year 13 Month Trend

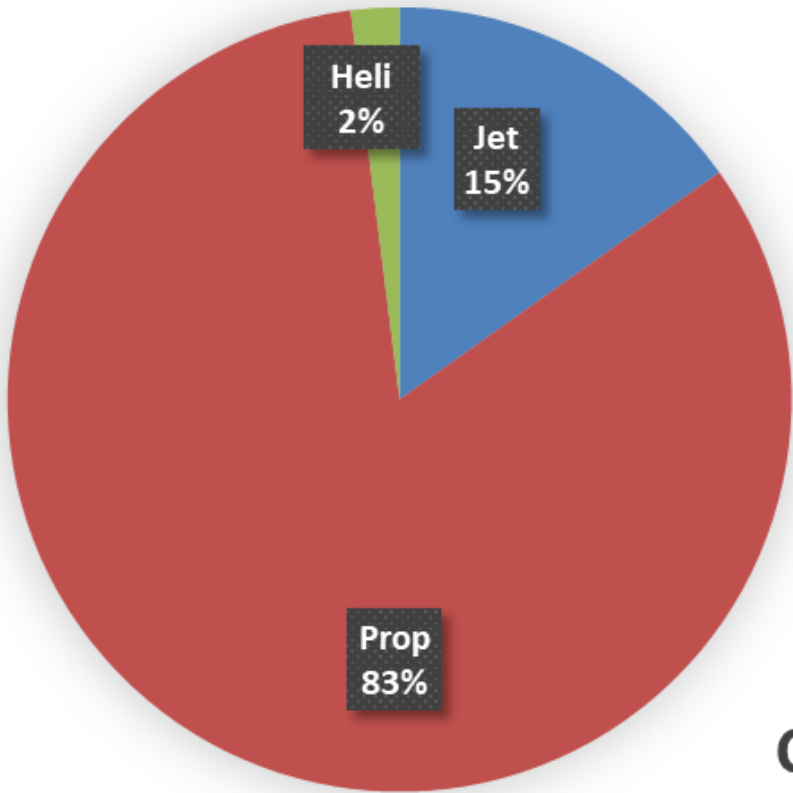


Top 5 Household Complaints YTD



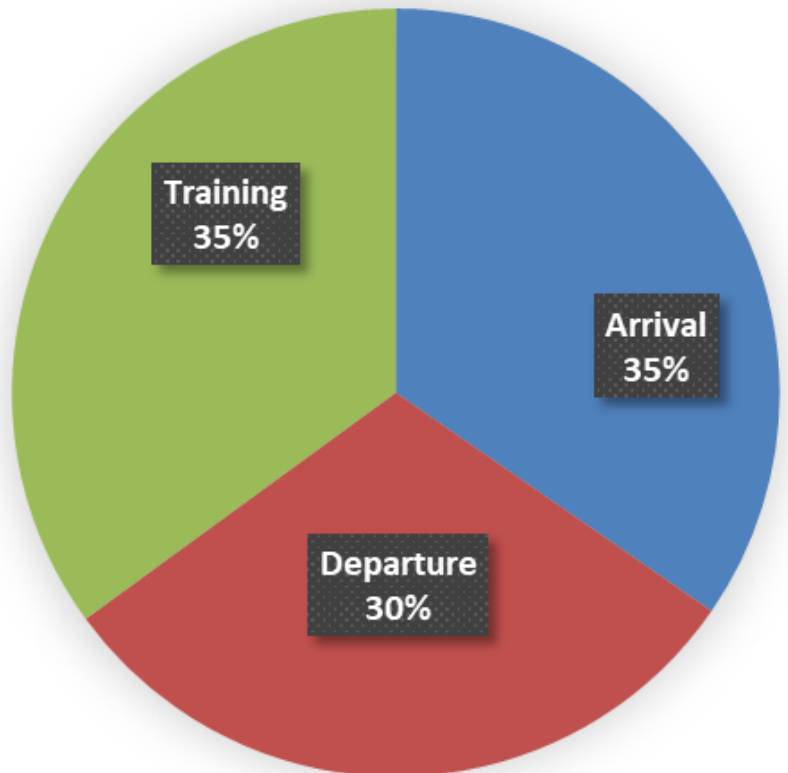
Top 5 Household Complaints		
Household	Complaints	Households
Household #1	1,363	Greenwood Village
Household #2	764	Parker
Household #3	722	Centennial
Household #4	570	Arapahoe County
Household #5	403	Arapahoe County
Remaining	4,964	
Total	8,786	

Complaints by Aircraft Type

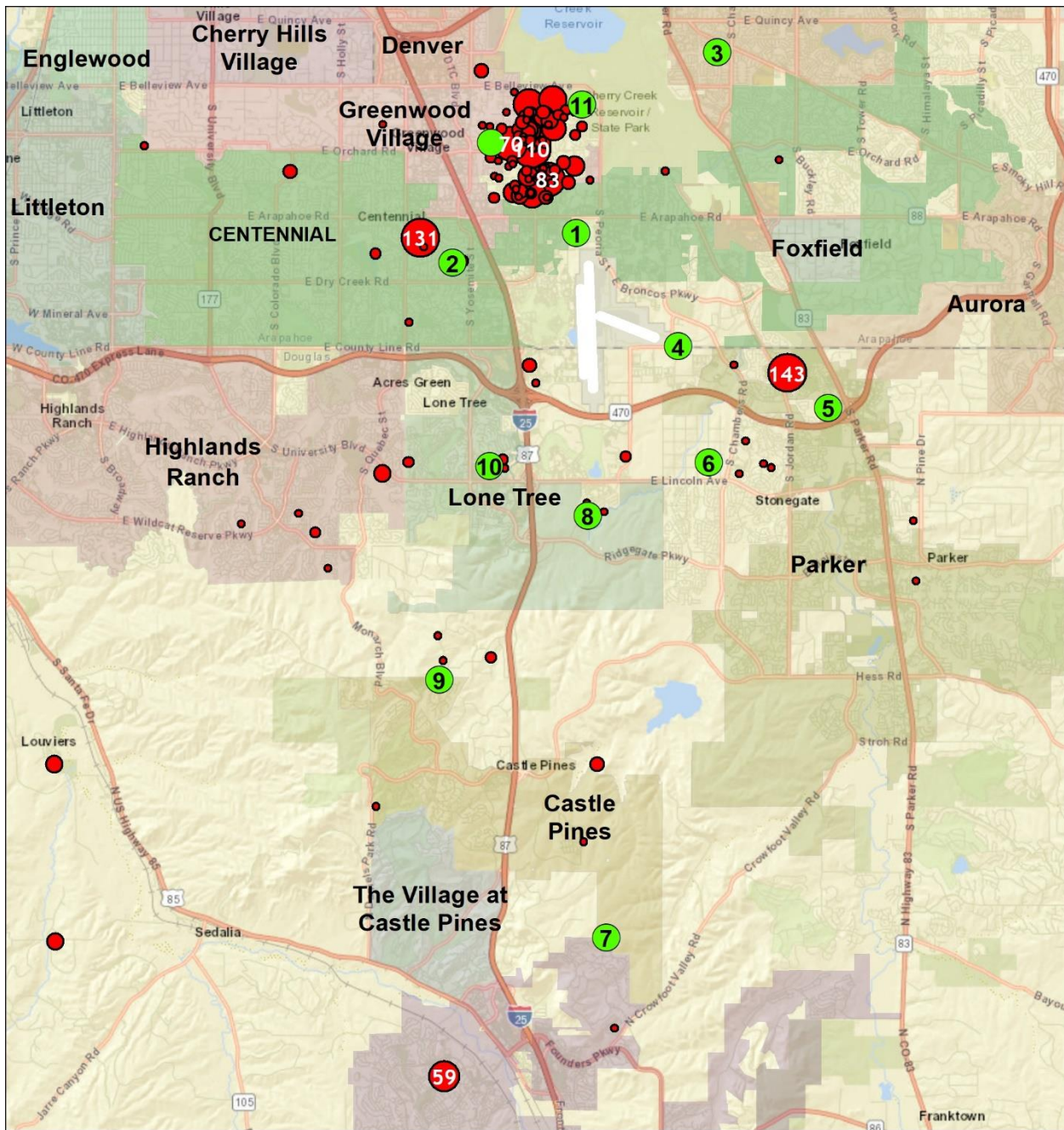


*#1 Household Removed

Complaints by Operation Type



8 CENTENNIAL AIRPORT COMPLAINT MAP



September 2023 Complaints

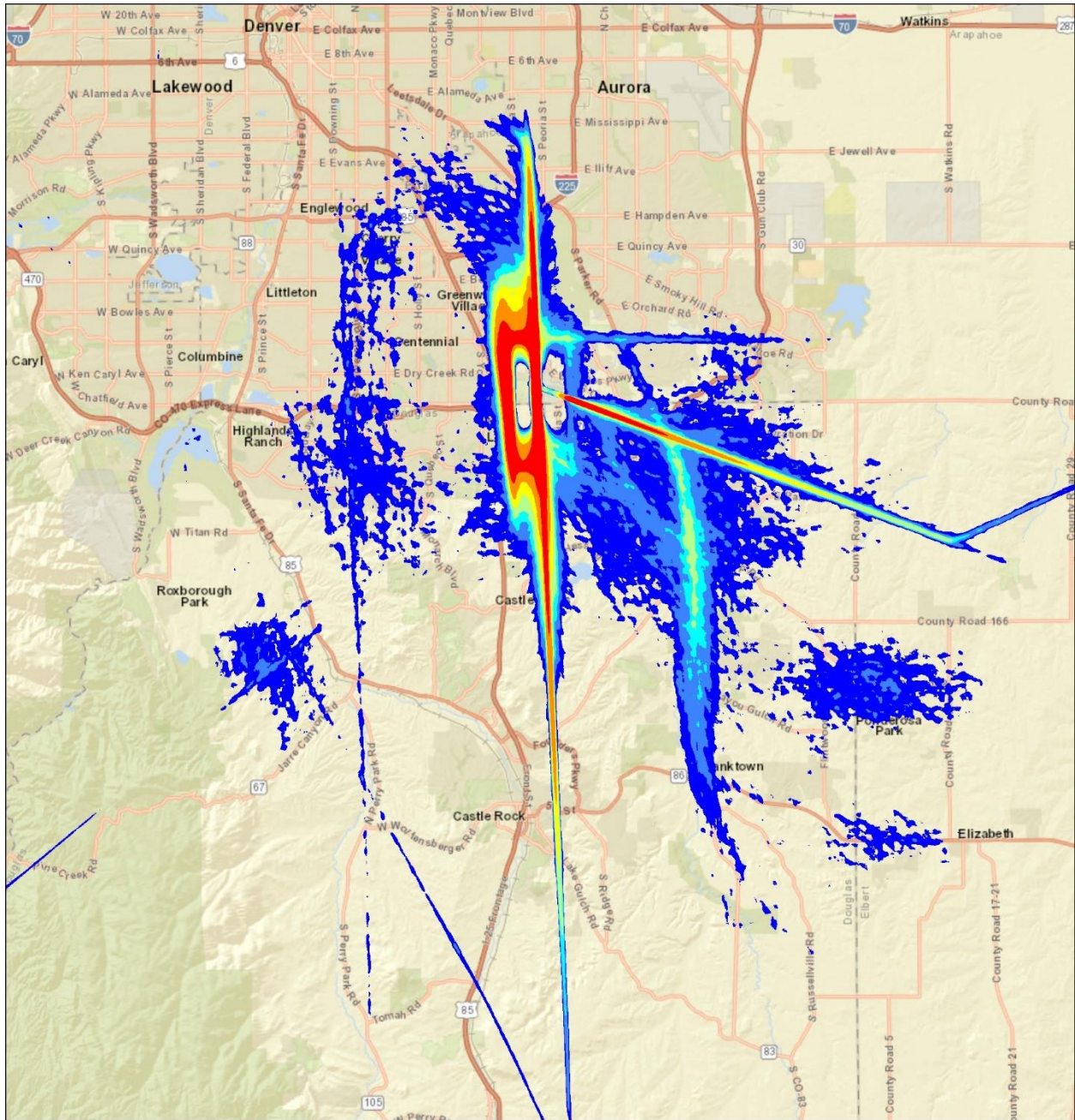


**Larger dots equate to more complaints for that particular households

9 CENTENNIAL AIRPORT RADAR TRACK DENSITY MAP

The following maps take all of the flight track data for the given time period and create a line density plot. This enables everyone to have a better understanding of where the flight tracks are at, while allowing for historical comparisons. Dark red in the middle of the picture shows the highest density of flight tracks over the runways. The colors gradually move out to blue as the least dense.

September 2023 Flight Tracks associated with Centennial Airport



Lower Density Traffic Higher Density Traffic

10 NOTES AND DISCLAIMER

This report is for informational use only. Every effort has been made to ensure the accuracy of this data; however, the material may be altered as new information is added or updated in the system.

Centennial Airport disclaims any responsibility or liability for any direct or indirect damages resulting from the use of this data. We hope this information provides you with a valuable tool in which to review noise data and characteristics in your area. If you have questions or concerns, please contact the Centennial Airport Noise office at **303-790-0598**.



Noise Hotline: 303-790-4709

www.centennialairport.com