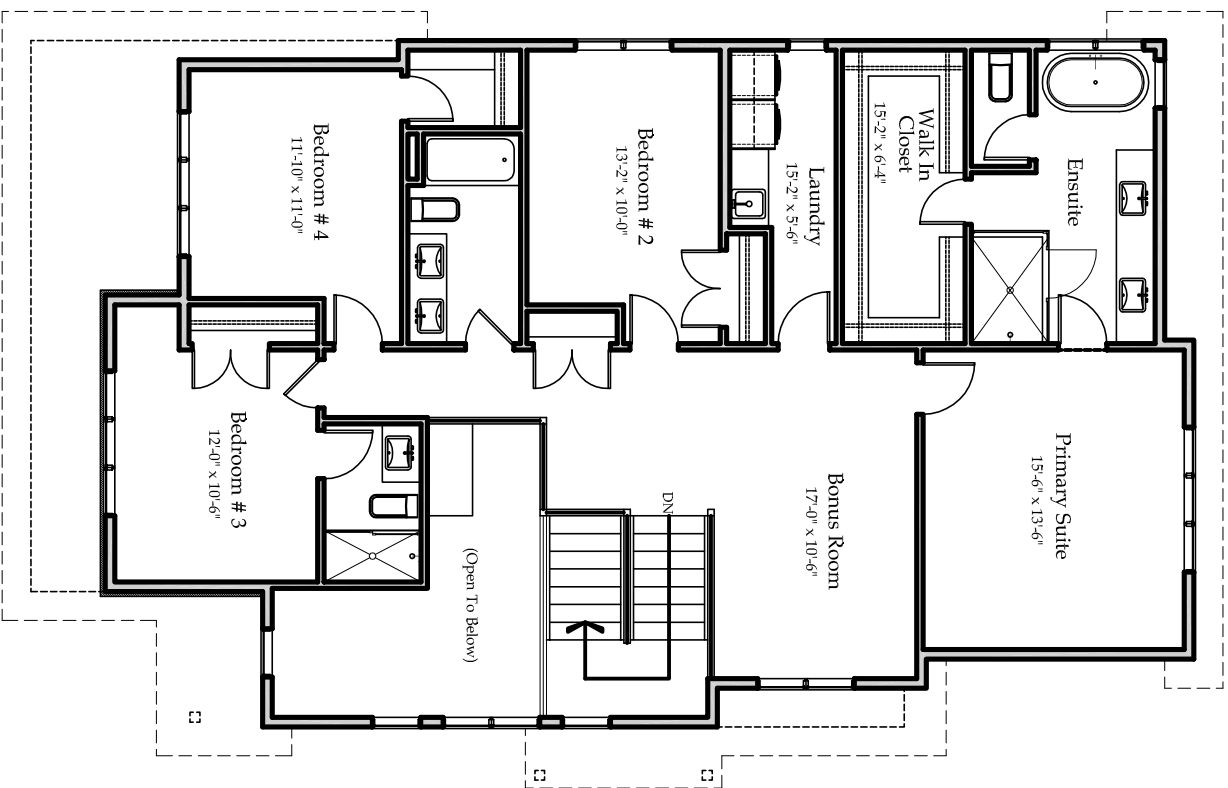
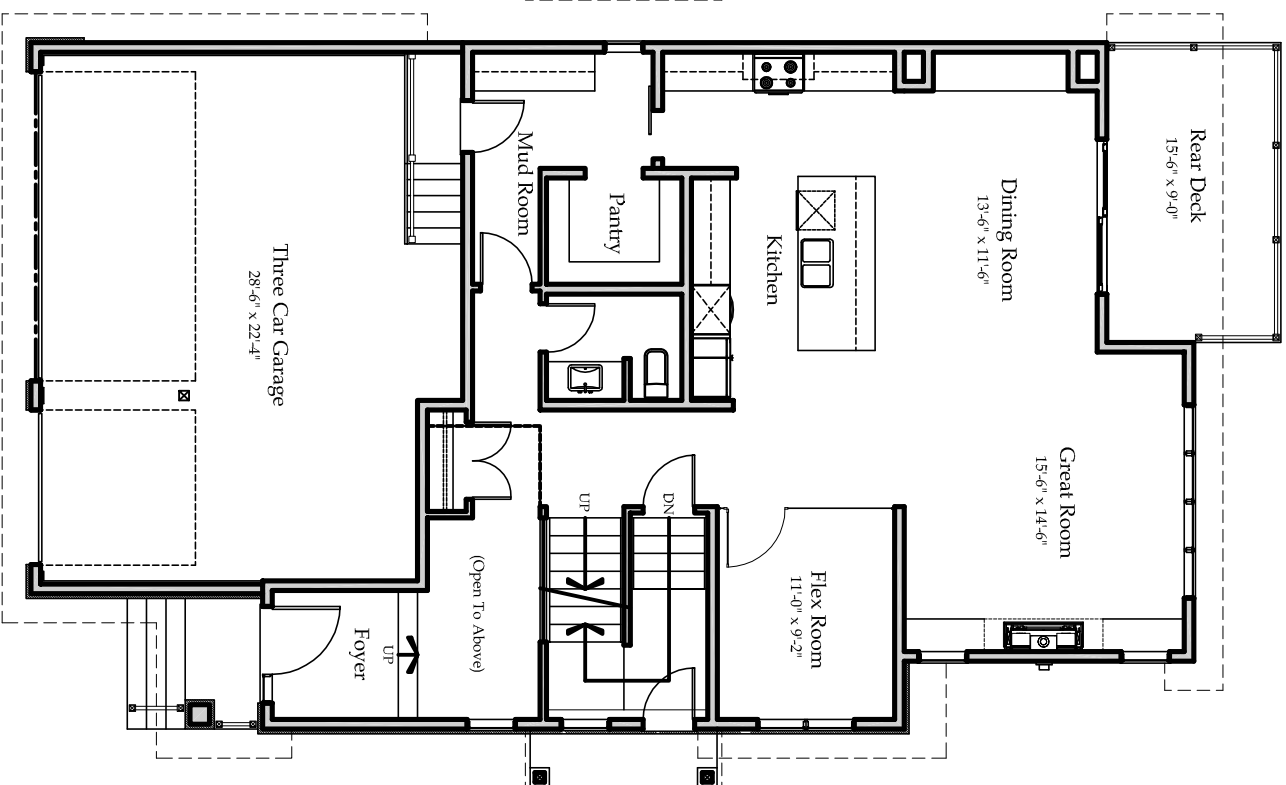


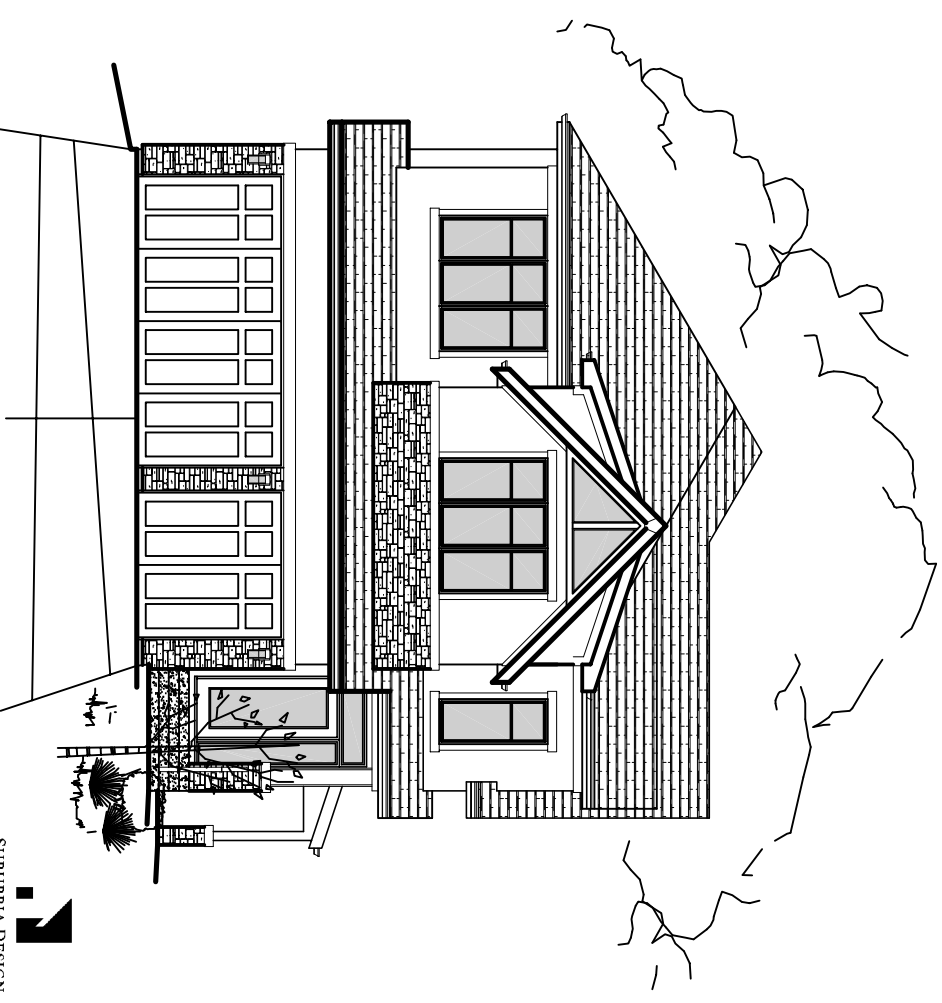
3 Mystic Ridge Way SW



UPPER FLOOR PLAN @ 1,556 SQ.FT.



MAIN FLOOR PLAN @ 1,322 SQ.FT.
TOTAL SQ.FT. @ 2,878



SUBURBIA DESIGN
ARCHITECTS INC.

Artist concept only. Exteriors may vary. All measurements are approximate. Due to on going research into materials and construction methods, plans, material and specifications are subject to change without notice. This plan and exterior may not be reproduced, in whole or in part, without the written permission of Sodeco Developments.

SODECO
developments.