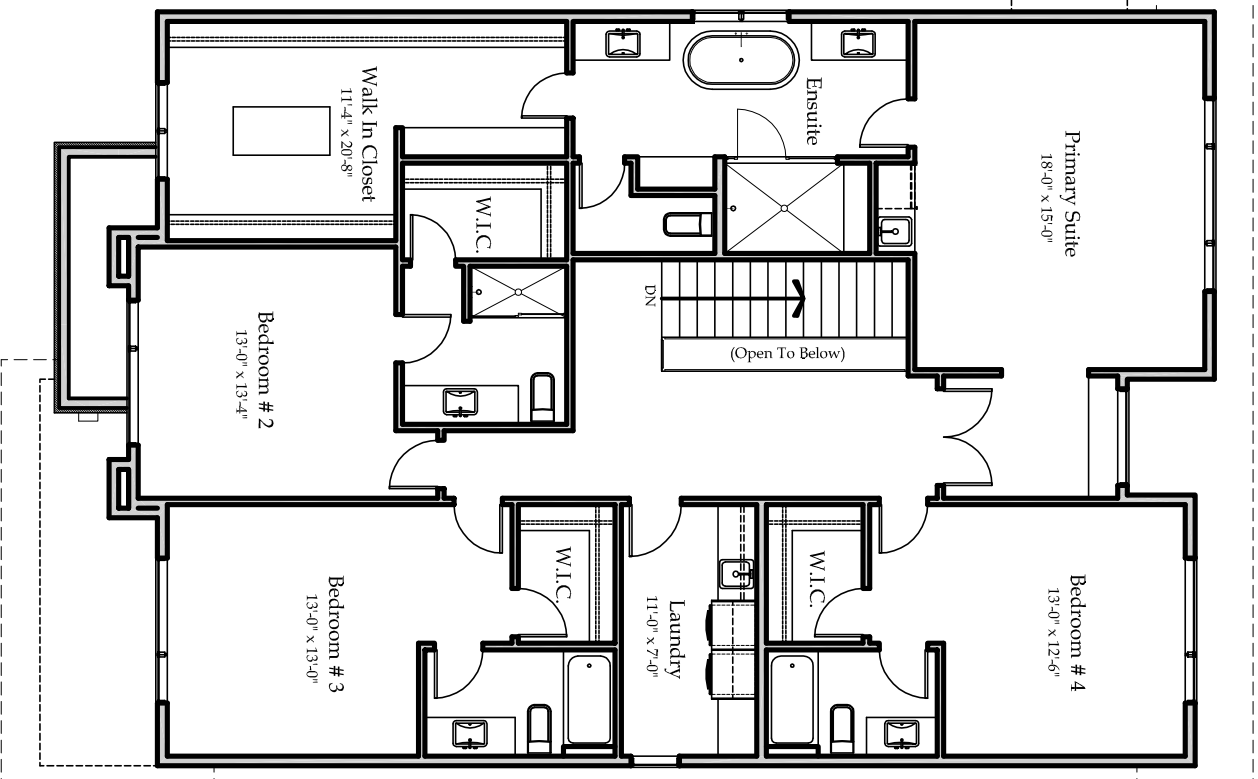
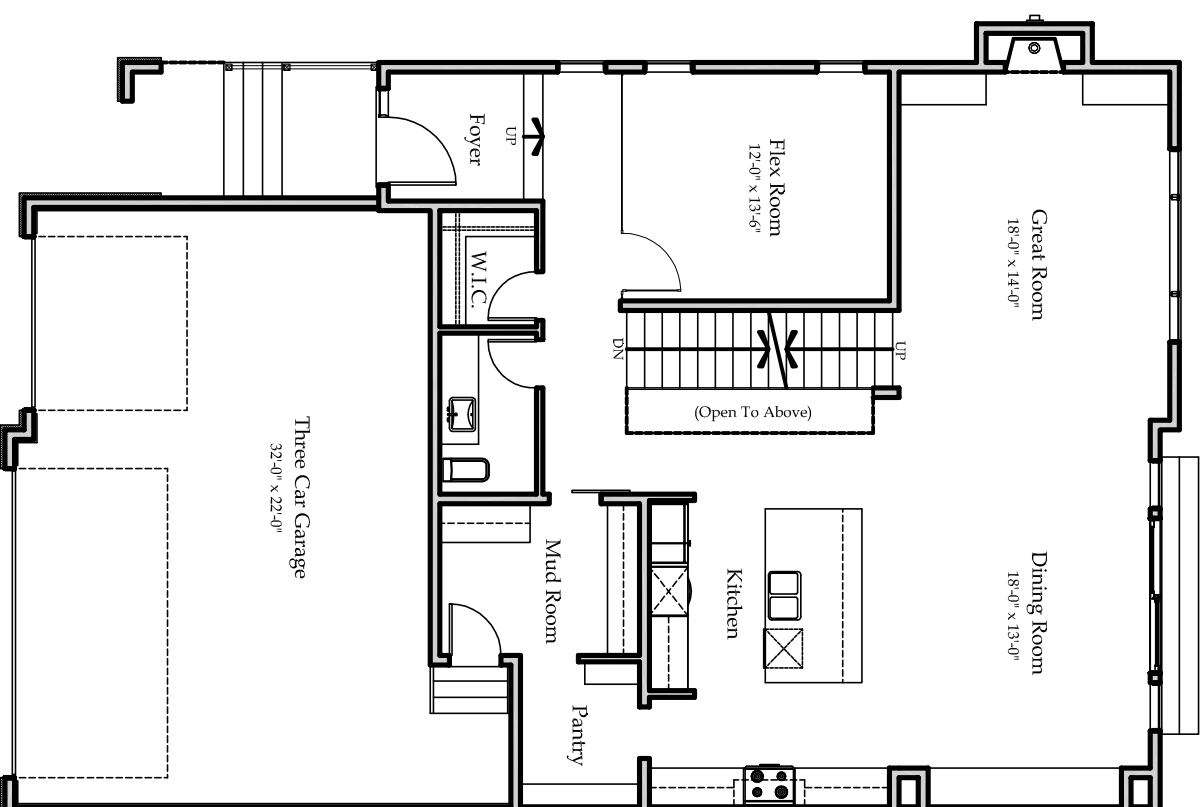


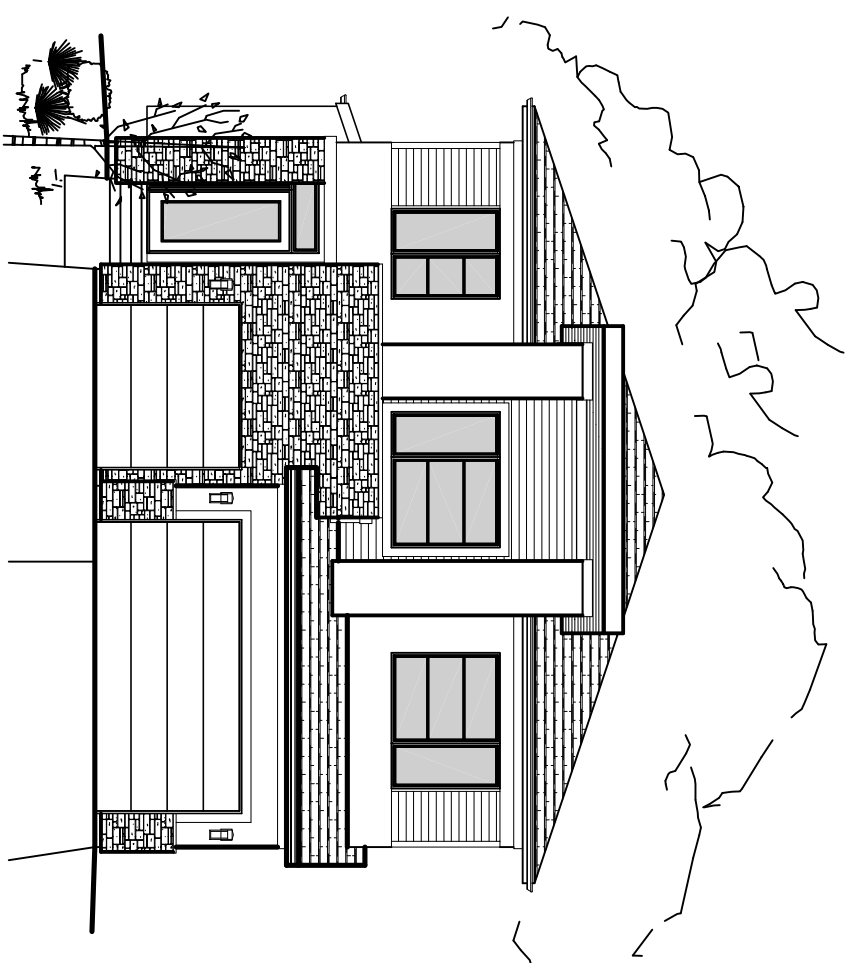
5 Mystic Ridge Way SW



UPPER FLOOR PLAN @ 2,040 SQ.FT.



MAIN FLOOR PLAN @ 1,480 SQ.FT.
TOTAL SQ.FT. @ 3,520



SUBURBIA DESIGN
ARCHITECTS INC.

Artist concept only. Exteriors may vary.
All measurements are approximate.
Due to on going research into materials and construction methods, plans, material and specifications are subject to change without notice. This plan and exterior may not be reproduced, in whole or in part, without the written permission of Sodeco Developments.

SODECO
•developments•