

JT Rock Light

Installation Instructions

www.DCSLighting.com



Like and Follow us on Facebook and Instagram @dcslighting

Thanks for choosing a DCS product that is designed and manufactured in the USA!

Installation Time: 60-90 Minutes with two people

Tools Needed: Wire snake/fish tape, 10 mm Wrench, Heat source for waterproofing, Electrical tape.

Contents: 4 “M” lights, 2 front wheel lights, 2 rear frame lights, 1 front axle light, 1 center magnet light, 1 rear magnet light, driver side harness “A”, Passenger side harness “B”, Engine compartment harness “C”, & Zip-Ties

Note: Installation should be done when temperature is above 70°F, this will allow the rubber bushings to be more flexible. If the interior of the frame is dirty it is best to wash it out prior to installation.

Step 1: READ ALL INSTRUCTIONS

Step 2: Install wire harnesses. Starting on the driver side. From under the Jeep, locate the hole in (fig 1). It is on the inside of the frame rail, just forward of the driver door. This is where the wiring will exit the frame. Insert your wire snake/tape into the hole where the rear light is to be installed (fig 2) until it can be pulled through hole in (fig 1). It is a long distance that is easiest accomplished with two people. Attach rear of A harness pictured in (fig 3) thoroughly using electrical tape. Gently pull the harness through the frame and out of the hole. Repeat this process for the passenger side using B harness.

Step 3: Once all frame wiring is done, route the male (yellow) end of each harness up along the frame rail and into the engine bay.

Note: When routing the wire harnesses up into the engine bay be sure to route in a manner where the wire will not come in contact with the exhaust. We recommend routing behind and along existing shielded wire located above the exit hole on both sides (Fig 1).

The “C” harness can now be installed along the top of the firewall using supplied zip ties. This harness is reversible to accommodate a power connection on either the driver or passenger side, whatever is best for your switch system. Connect male ends of both A & B harnesses to C harness. Once the wiring is all routed properly, connect the “C” harness to a power source. Note, one plug will remain open on the C harness after installation is finished. This plug is for accessories such as grille lights.

Step 4: Identify light locations. Using your fingers pull the harness plugs out of the holes where each light is to be installed. “M” Lights fit within the oval holes under the doors in the middle of the vehicle (fig 4). Front lights fit the holes directly behind the front wheels (fig 5). Rear lights fit the downward facing frame holes on either side of the spare wheel (fig 6). The front axle light attaches to the radiator hose support (fig 7). Center magnet light attaches to the underbody just rear of the transfer case (fig 8). Rear magnet light attaches above the rear axle.

Step 5: Install lights. When installing rubber lights, push light in at an angle to lock in, then work in the remaining sections. Do not push from center of light as damage may result.

Remove 10mm nut from radiator hose support bracket (fig 8). Use the nut to attach the front axle light. DO NOT OVER TIGHTEN. Route wire to the driver side and up into engine bay. Be sure to secure wire so it does not contact any moving parts. Connect to the “C” harness.

Front lights fit within hole in frame behind front wheels. Insert wire lead from light into hole. Feed wire down until it can be connected to the harness at the front “M” location. This is easiest accomplished with the wire snake/tape.

The center underbody light attaches to the underbody just rear of the drivetrain using high power magnets. Route wiring along or inside crossmember and into to the driver’s side frame (fig 9). Connect to the harness at the “MID” location. Use zip-ties to secure the wire where necessary to AVOID THE EXHAUST. Light can be positioned where necessary for best output.

The lights marked “M” can now be installed by first connecting them to the harness then pushing into their corresponding holes.

Rear magnet light attaches directly above the rear axle. Insert wiring through hole in (fig 10) and towards passenger side where it will connect to the harness inside the frame. The light plugs into the red JST connector located 12” from the end. Use supplied heat shrink to seal connection.

Install rear lights by first connecting and heat shrinking the connections. This is important for water proofing. Be careful not to burn the heat shrink or wire. Install lights.

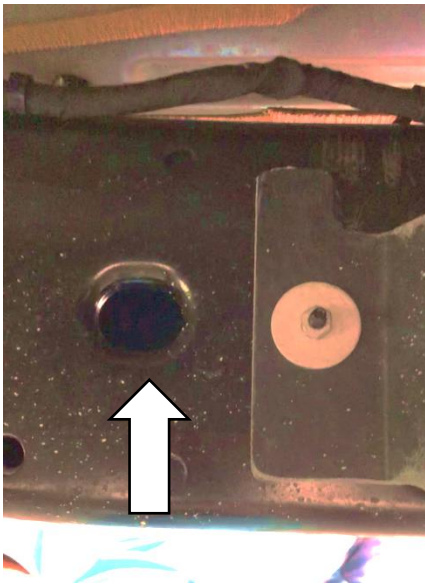


Figure 1

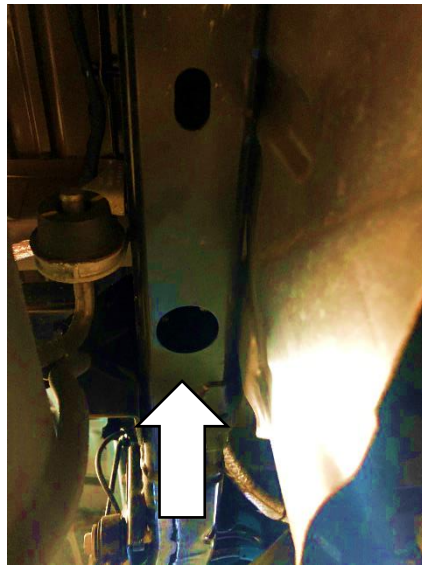


Figure 2



Figure 3

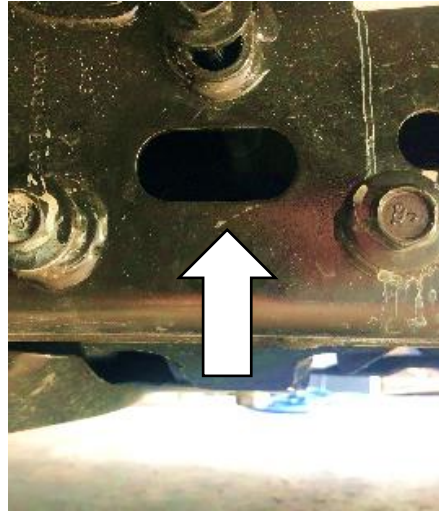


Figure 4

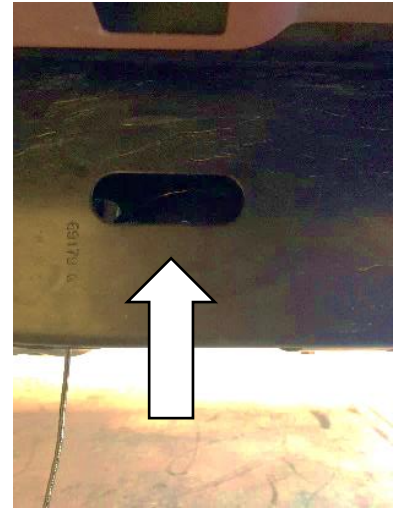


Figure 4



Figure 6



Figure 6



Figure 5

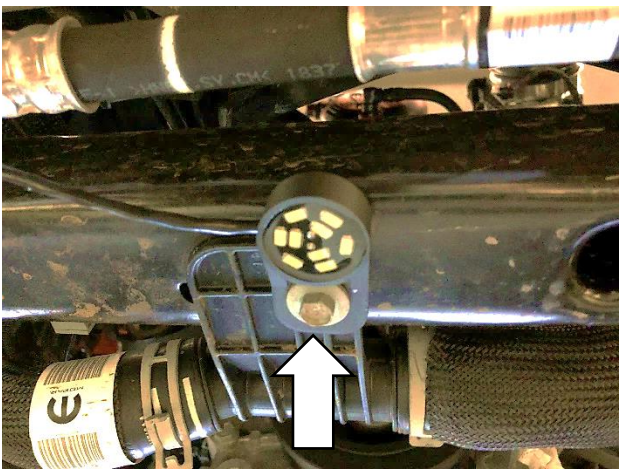


Figure 7



Figure 8

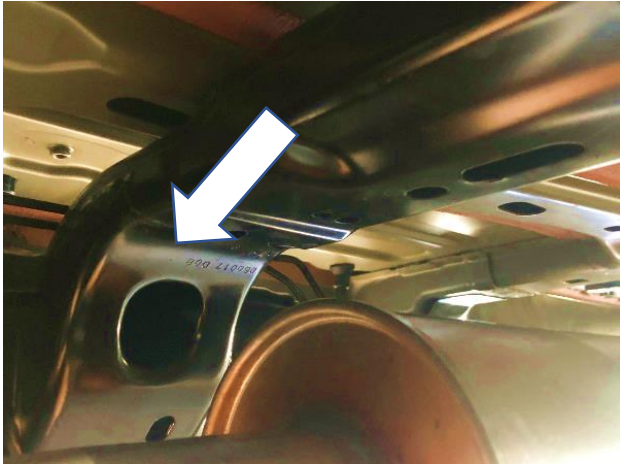


Figure 9

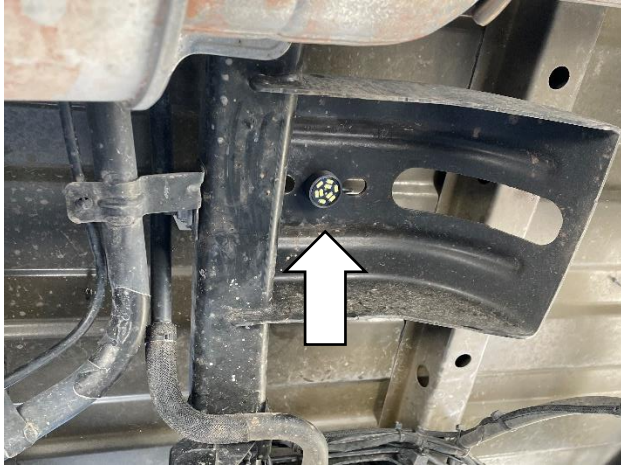


Figure 10