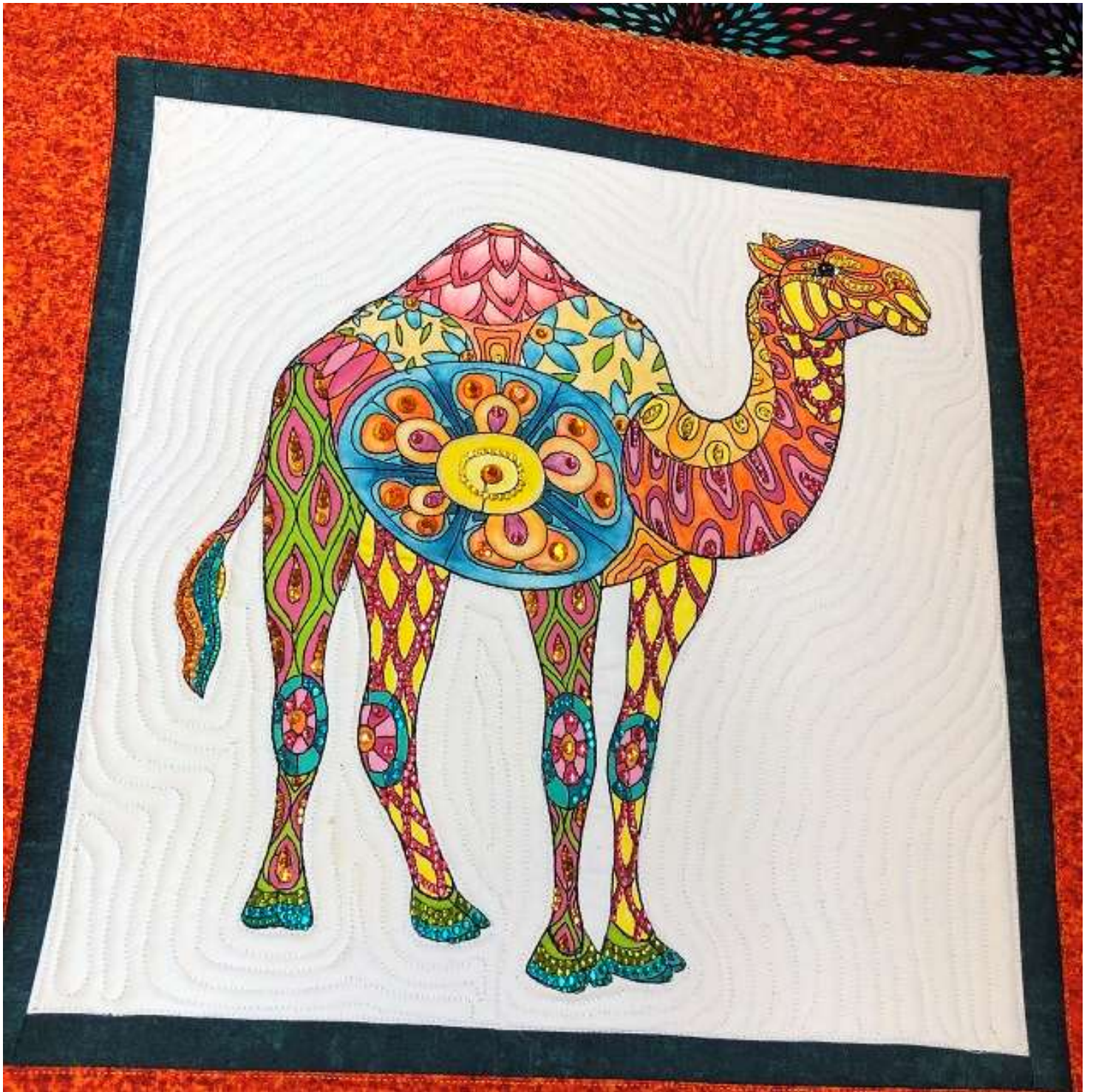


Henna Camel Block Coloring and Bling Kit Instructions



AGZ Block 4 – The Camel

Recommended Coloring Materials:

The Camel is done with colored pencils, fabric and gel pen markers. The following is a list of recommended colors:



1. Fabrico Pea pod
2. Fabrico Lipstick Pink
3. Fabrico Bubblegum Pink
4. Fabrico Lemon Yellow
5. Fabrico Tangerine
6. Inktense Cadmium Yellow
7. Inktense Golden Yellow
8. Inktense Cadmium Orange
9. Inktense Dark Aquamarine
10. Inktense Carmine pink
11. Plain fabric Medium
12. No 2 Royal Shaper Paint Brush
13. Paint Palette

The colors are in order relative to the picture to the left.

NOTE: WHEN USING LIGHT FABRICO MARKERS NEXT TO DARK COLORS, ALLOW THE FABRICO MARKER TO DRY FOR FIVE-TEN MINUTES BEFORE COLORING WITH DARKER COLOR. THIS WILL PREVENT BLEEDING!!!

The Camel is a wide variety of pinks, greens, blues and yellows. In order to create a “color by number” system for the Camel, I have numbered the picture above with numbers for each pen.

Use the Black and White Version of each Camel section attached to test colors first and to set up a color code chart before coloring on sampler. In the case of the Camel you may want to make several copies of the black and white version and color it several times to determine the best color combo for you.

Bling Kit – the bling kit for the Camel is relatively simple of the Animals Gone Zen series however many of the stones are size SS6 (sort of hard to see due to their small size). You may want a pair of magnifiers for placing these stones! The Camel design has been broken down into sections and labeled carefully with names of stones and the number of stones used in each band.

Bling Kit (all the stones necessary to bling according to the photo included in kit. Please note that there are just a few extra stones of each color so be careful when handling the rhinestones).

Iron or Mini Iron. The best way to attach most of these stones is with a mini iron preferably one that has a rhinestone tip. A regular iron can be used but may prove to be cumbersome when setting the very smallest stones. **IN ORDER TO PREVENT SCORCHING YOUR FABRIC USE A PRESS CLOTH!!!!**

Pair of tweezers for placing the stones. Any tweezer will do but I find that embroidery tweezers or medical supply tweezers at least 4.5” long work the best.

Roxanne’s Baste it with the small nozzle for precise glue placement. Although the stones are all hot fix (meaning that the glue on the stone is activated by heat), I found it somewhat easier to put a spot of Roxanne’s Baste it glue down, place the stone on the glue then let the glue dry (for about 5 minutes). Then hit the stone with your iron or mini iron. The Baste it glue holds the stone exactly where you want so you can place the iron on it without worry of the stone shifting under the iron.

There is no particular step by step process other than it is easier to color first then place the stones. Always place your smaller stones first then the larger stones so that the iron can touch the surface completely. Make sure to heat set the coloring first before placing stones. The photo included should be the best guide for coloring as well as where exactly to place stones. However, there are detailed diagrams of each part of the design labeled with number associated with a particular stone and pencil for coloring. Please see the Excel spreadsheet printout for the rhinestone name, the size and the color code for each stone. I have also provided a close count of how many stones are used throughout the process.

If you are having difficulty setting the stones (i.e., they don’t seem to stick once heat activated) you may want to refer to the VERY DETAILED instructions provided by the following link:

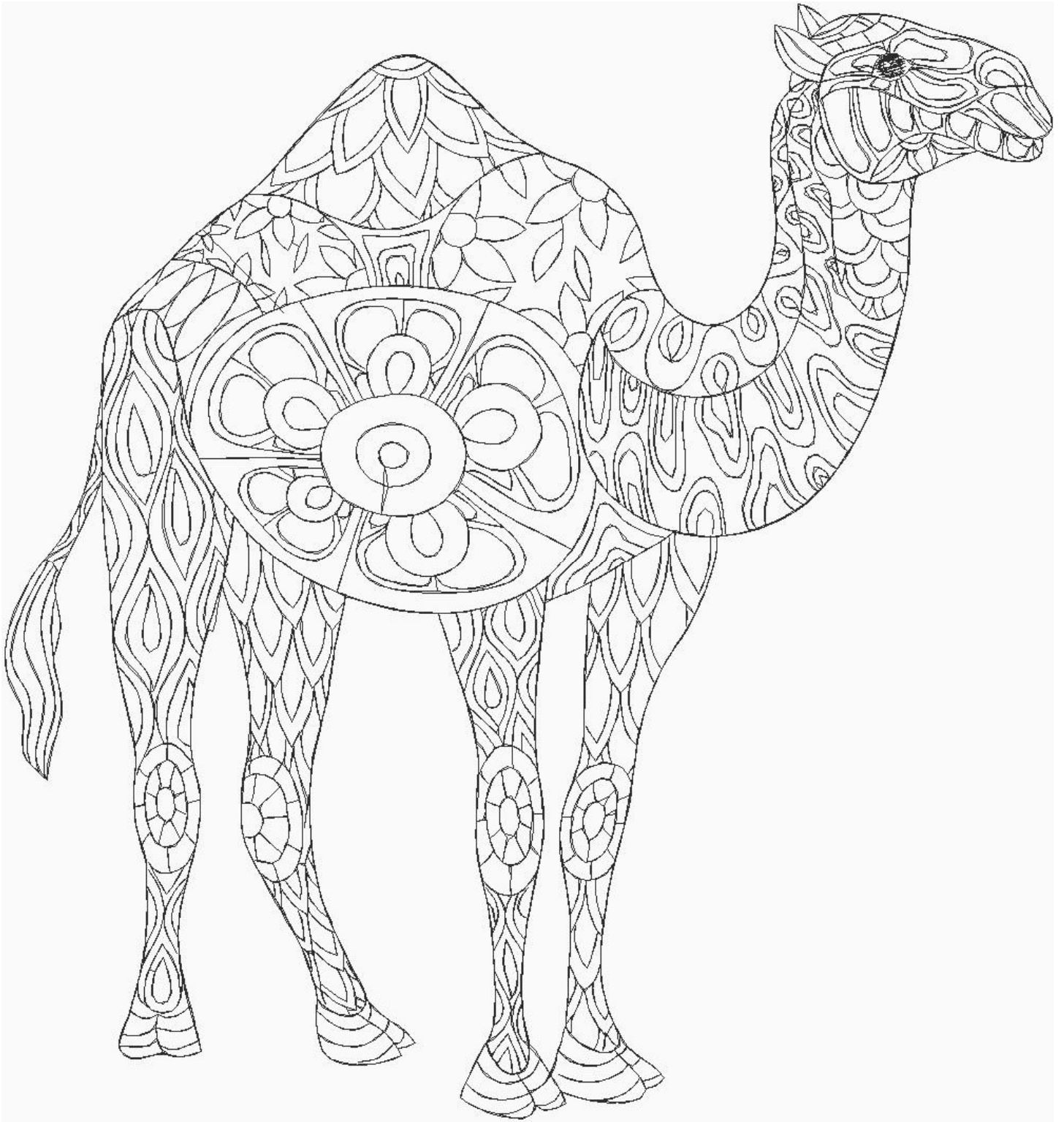
https://www.harmanbeads.com/assets/images/PDFs/Product%20Information/Application%20Manual/2017/SP_Application_2017_hotfix.pdf

Finally, you can contact me via email at: medinadomarts@aol.com for any questions or if you need additional rhinestones to complete your work of art!

Enjoy!

Michele Markey

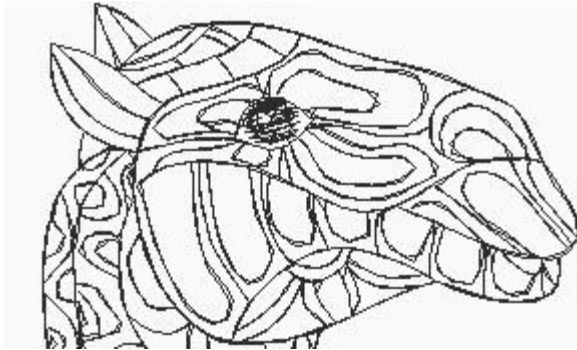
Medina Domestic Arts Studio LLC



AGZ Block 4 – The Camel

Color Code	TA Lemon SS6	Fuchsia SS6	Swar Padpara SS10	Swar Topaz SS16	Swar Sunflower SS10	Swar Tangerine SS20	Swar Indian Pink SS12	Hyacinth SS6	Emerald SS6	Topaz SS6	Capri Blue SS6	Preciosa Olivine SS6	
Stones for Camel	1	2	3	4	5	6	7	8	9	10	11	12	
Weight	0.66			0.145		0.475							
Camel Head													
Ears	8												
Patches around Eyes	21												
Nose	7							1					
Forehead			4										
Camel Neck													
Top part of neck inner small ovals	19												
Small inner oval-like shapes on lower part of neck		50											
Small bands in Scalloped area under head		45											
Camel Hump and Area Under Hump													
Tips of Petals			8										
Centers of Flowers				5									
Center of Square Shape					1								
Camel Center Flower on Stomach													
Center of Flower						1							
Second Band from Center	24												
Center of 1st Row of Petals							5						
Second Row of Petals						10							
Tail													
Row 1		18											
Row 2								10					
Row 3											13		
Row 4									20				
Row 5	4												
Legs (Stone count is for both Front and Back Legs)													
Center Oval Shape on Left Back and Front Leg					4					64			
Flower on Knee Center													
2nd Flower on Knee Band							14						
Outer Band of Flower on Knee											32		
Hoof Row 2												55	
Hoof Row 3											32		
Hoof Row 4									22				
Outer Bands on Right Back and Front Legs		215											
Total	83	328	12	5	5	11	20	10	42	64	77	55	712

Camel Head



Coloring:

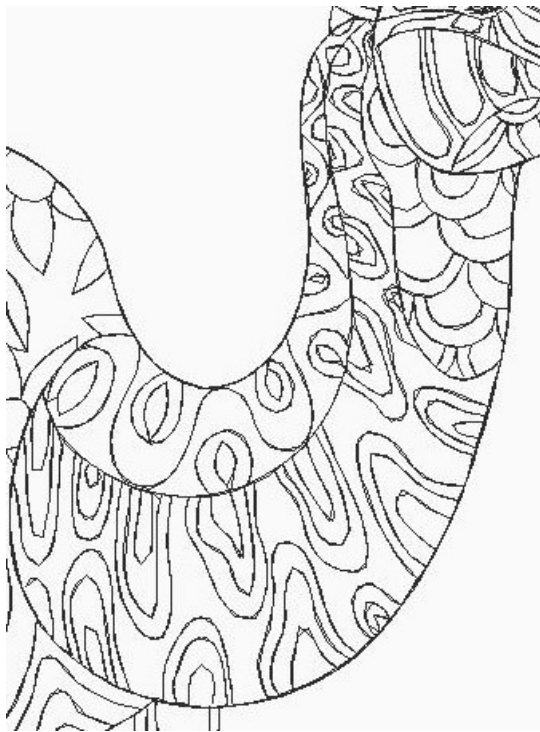
1. Ears – Fabrico Tangerine on outside and Fabrico Lemon Yellow on inside of ear
2. Forehead row 1 – Fabrico Lemon Yellow
3. Forehead Row 2 – Fabrico Bubblegum Pink
4. Forehead row 3 – Inktense Dk Aquamarine
5. Forehead row 4 – Fabrico Lipstick Pink
6. Areas around Eyes – Fabrico Tangerine
7. Nose – Inktense Golden Yellow
8. Ovals under eye Fabrico Lemon Yellow
9. Area around ovals – Fabrico Tangerine
10. Flower under chin – center – Fabrico Lemon Yellow
11. Centers of Flower petals under chin and small center band – Fabrico Lipstick Pink
12. Outer edges of Flower Petals under chin – Inktense Dk Aquamarine
13. Area outside of flower under chin – Fabrico Tangerine

Instructions for coloring and bling on Camel Head

Bling:

1. Ears – Lemon SS6 - 8
2. Patches around eye – Lemon SS6 - 21
3. Nose – Lemon SS6 – 7 and Hyacinth SS10 - 1
4. Forehead – Padpara SS8 - 4

Camel Neck



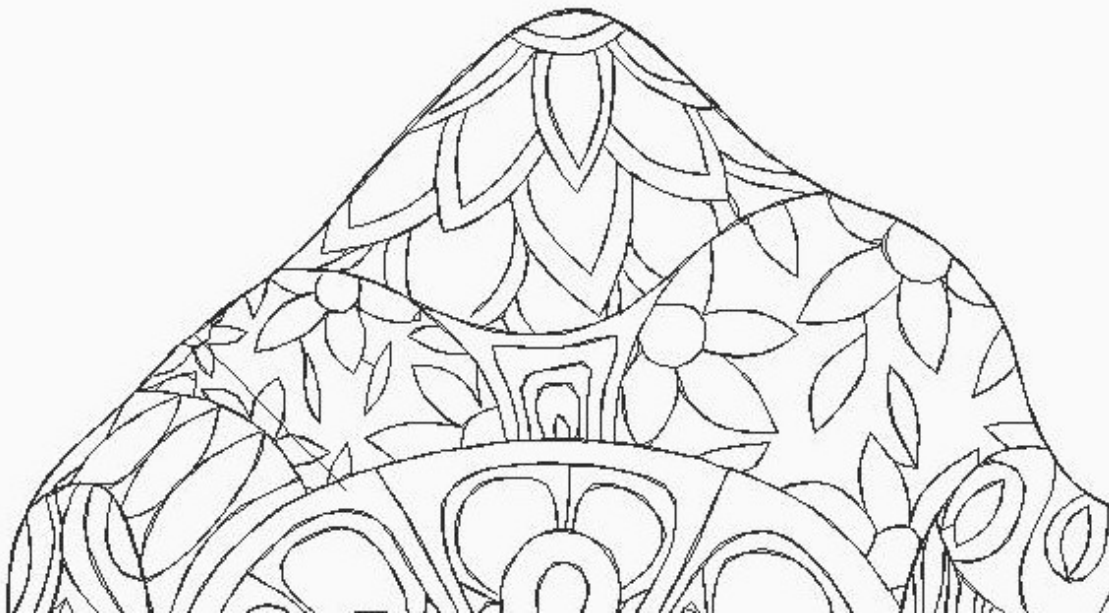
Coloring

1. Scallop shaped areas directly underneath head – Fabrico Lemon Yellow and small bands - Fabrico Lipstick Pink
2. Yellow part of Neck: Color bottom part of Neck Golden Yellow lightly then apply fabric medium to entire neck. Color top part of neck (that is wet with fabric medium) heavily. Color with Fabrico Yellow in small circular areas
3. Small inner oval-like shapes (inner and middle sections) on bottom of neck - Fabrico Bubblegum Pink
4. Outer band of small inner oval-like shapes on bottom of neck - Fabrico Lipstick Pink
5. Area around oval-like shapes on bottom of neck – Fabrico Tangerine

Bling:

1. Top part of neck small ovals – Lemon SS6 - 19
2. Small inner oval-like shapes on lower part of neck – Fuchsia SS6 - 50
3. Small bands in Scalloped area under head – Fuchsia SS6 - 43

Camel Hump



See next page for coloring and bling instructions for Camel's Hump and Flowered area

Coloring

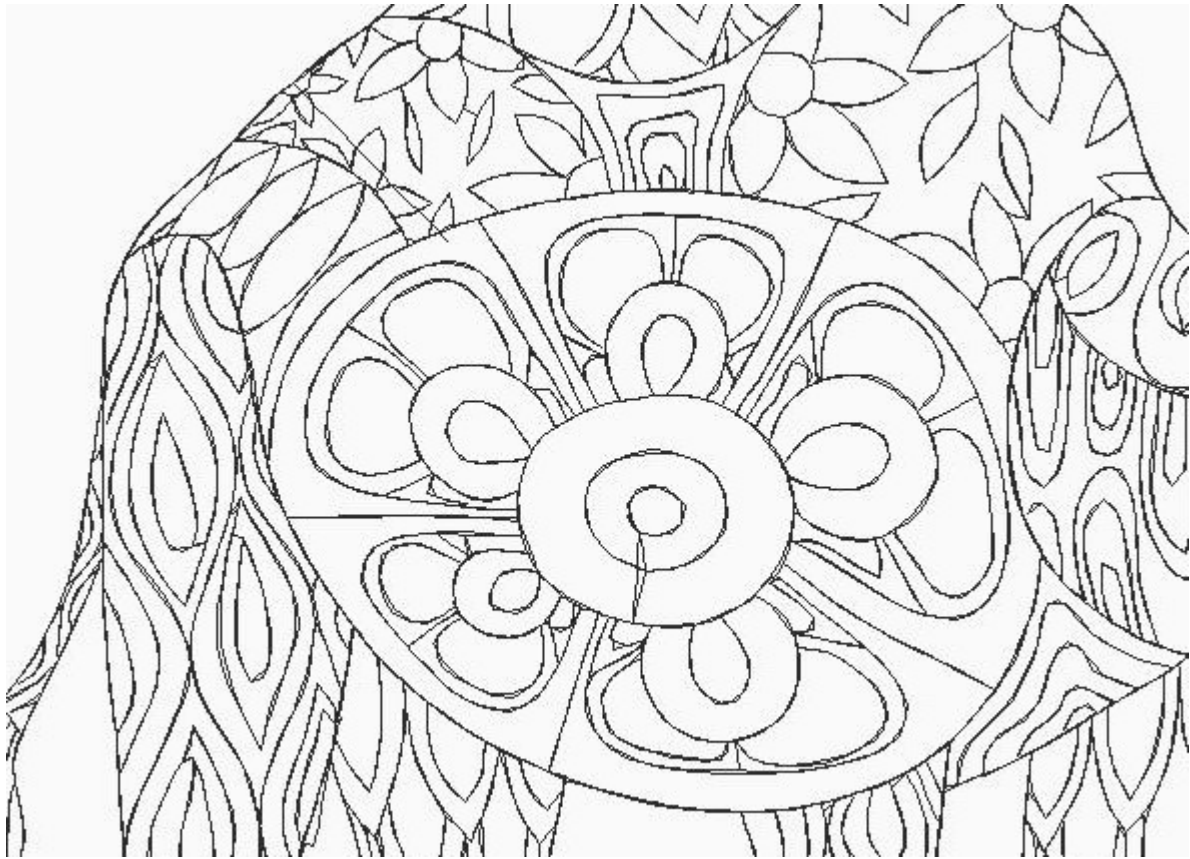
1. Flower on Hump: Center – Fabrico Lemon Yellow
2. Flower on Hump: Petals – starting at tip of petal use Inktense Carmine Pink dark then light towards base of petal. Use fabric medium from tip to base to get the dark to light effect.
3. Flower on Hump: Petal Bands – color with Inktense Carmine Pink heavy for dark effect
4. Square shape below hump: Use Inktense Golden Yellow in center then various shades of Inktense Cadmium Orange in each band
5. Small Flowered area below hump: color background lightly with Inktense Golden Yellow
6. Small Flowered area below hump: color flower centers with Inktense Golden Yellow and Cadmium Orange
7. Small Flowered area below hump: color small flowers with Inktense Dark Aquamarine
8. Small Flowered area below hump: color leaves with Fabric Pea Pod

Bling:

1. Tips of Petals: Swar Padpara SS10- 8
2. Centers of Flowers: Swar Topaz SS16 - 5
3. Center of Square Shape: RG Prem Citrine SS10 - 1

AGZ Block 4 – The Camel

Flower on Stomach



See next page for coloring and bling instructions for Center Flower

Coloring

1. Center of Flower – Fabrico Lemon Yellow
2. 2nd Center Band – Fabrico Lemon Yellow
3. 3rd Center band – Fabrico Lemon Yellow with over color of Inktense Cadmium Yellow (wait for Fabrico to dry)
4. Center of 1st row of Petals - Fabrico Bubblegum Pink with over color of Inktense Carmine Pink (wait for Fabrico to dry)
5. Outer band of 1st row of Petals – Color lightly with Golden Yellow then over color base lightly with Cadmium Orange
6. Second row of Petals – color with Cadmium Orange heavy at base and lightly towards top of petals
7. Remaining areas color with Dark Aquamarine. The area next to second row of petals should be colored very lightly while the outer area should be colored heavily at the base and lighter towards the outer part of design.
8. Triangular shape below hump: Alternate Inktense Golden Yellow starting in center then various shades of Inktense Cadmium Orange in each band
9. Ovals on Rump: Alternate Fabrico Lipstick Pink with Fabrico Bubblegum Pink in Ovals and Fabrico Tangerine in area around Ovals.

Bling:

1. Center of Flower: Swar Tangerine SS20 - 1
2. 2nd Center band: Lemon SS6 - 24
3. Center of 1st row of Petals: 5 Swar Indian Pink SS12 - 5
4. Second Row of Petals: Swar Tangerine SS20 OR Preciosa Sun SS30 - 10

Tail



Coloring

Starting at top of tail:

1. Top of tail alternate Fabrico Lemon Yellow with Lipstick Pink
2. Tail Row 1 – Fabrico Lipstick Pink
3. Tail Row 2 – Fabrico Tangerine
4. Tail Row 3 – Inkense Dark Aquamarine
5. Tail Row 4 – Fabrico Pea Pod
6. Tail Row 5 – Fabrico Lemon Yellow

Bling:

Starting at top of Tail:

1. Row 1: Fuchsia SS6 - 18
2. Row 2: Hyacinth SS6 - 10
3. Row 3: Blue Zircon SS8 - 13
4. Row 4: Emerald SS6 - 20
5. Row 5: Lemon SS6 - 4

Legs Back and Front



Coloring

Starting at top Left back Leg:

1. Left Leg Oval Shape Center – Fabrico Lemon Yellow
2. Left Leg Oval Shape Outer Band – Fabrico Lipstick Pink
3. Left Leg Oval Shape 2nd outer band – Fabrico Pea Pod
4. Both Legs Center Knee area – Fabrico Tangerine
5. Both Legs 2nd Band Knee area- alternate Fabrico Bubblegum Pink and Lipstick Pink
6. Both Legs 3rd Band Knee area – Inktense Dark Aquamarine
7. Both Legs Hoof top two bands: Fabrico Pea Pod
8. Both Legs Hoof bottom two bands – Inktense Dark Aquamarine
9. Right Leg: Center diamond shape – Fabrico Lemon Yellow
10. Outer band Right Leg: Fabrico Lipstick Pink

Bling:

For Left Back and Front Legs:

1. Center Oval Shape – Topaz SS6 - 64
2. Flower Center – Swar Sunflower SS10 - 4
3. 2nd Band Knee Area: Swar Indian Pink SS12 - 14
4. Outer Band Knee Area: Capri Blue SS6 – 32
5. Hoof Row 2: Preciosa Olivine SS6 – 55
6. Hoof Row 3: Capri Blue SS6 – 32
7. Hoof Row 4: Swar Emerald SS5 - 22



Front Legs are colored and blinged the same as the back legs