



THE INTERSECTIONALITY OF CHILDHOOD TRAUMA

JERI C. PERKINS, MSW





ACEs impact every child, family and community differently.

At the intersection of race/ethnicity, gender, age, and Socioeconomic Status (SES) there are a variety of factors that impact a child's ACEs score and the different levels of grief and accumulated challenges and or barriers that they experience.

This workshop will look at child abuse prevention from a Diversity, Equity, Inclusion, Belonging, & Justice (DEIBJ) lens and approach.

The framework of the discussion will focus on collective individual, family and community responsibility from an accountability-lens and solution-focused approach.

ABUSE



Physical



Emotional



Sexual

NEGLECT



Physical



Emotional

HOUSEHOLD DYSFUNCTION



Mental Illness



Mother treated violently



Divorce



Incarcerated Relative



Substance Abuse

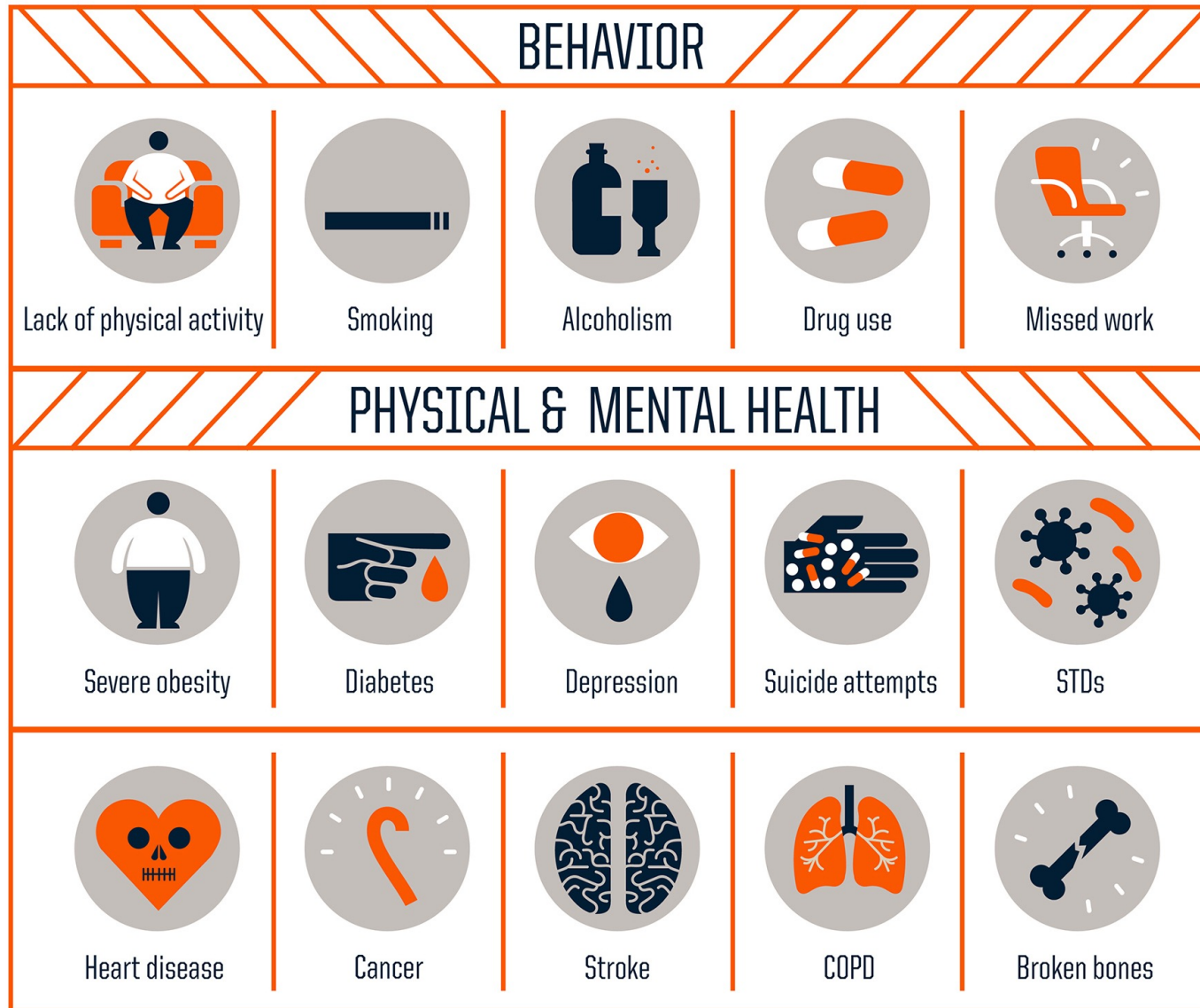
ACES SCORES RISK FACTORS

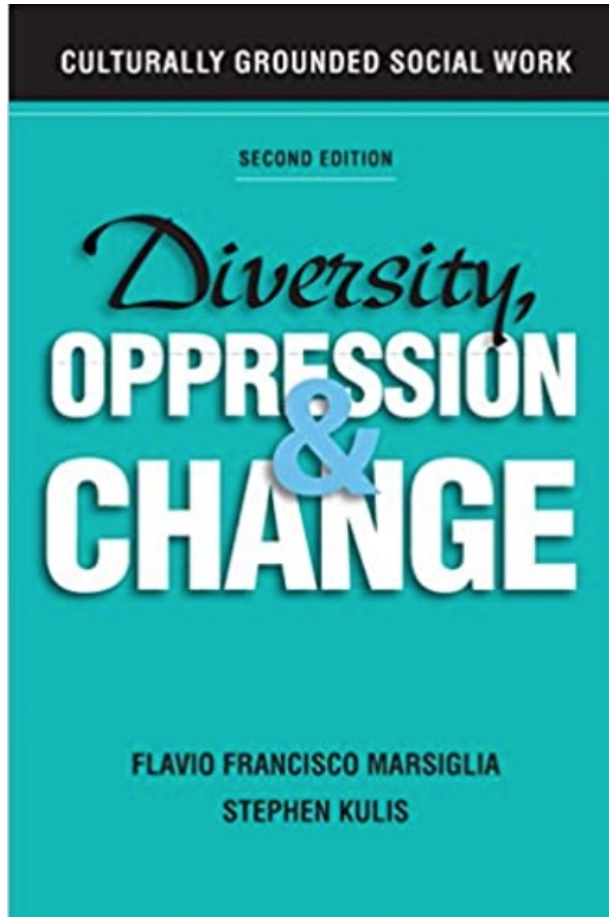
- ABUSE
 - Physical
 - Emotional
 - Sexual
- NEGLECT
 - Physical
 - Emotional
- HOUSEHOLD DYSFUNCTION
 - Mental Illness
 - Divorce
 - Incarcerated Relative
 - Substance Abuse



OUTCOMES TRANSITION FROM CHILDHOOD, ADOLESCENCE TO ADULTHOOD

- BEHAVIOR
 - Lack of physical activity
 - Smoking
 - Alcoholism
 - Drug use
 - Missed work
- PHYSICAL & MENTAL HEALTH
 - Severe obesity
 - Diabetes
 - Depression
 - Suicide attempts
 - STDs
 - Heart disease
 - Cancer
 - Stroke
 - COPD
 - Broken bones



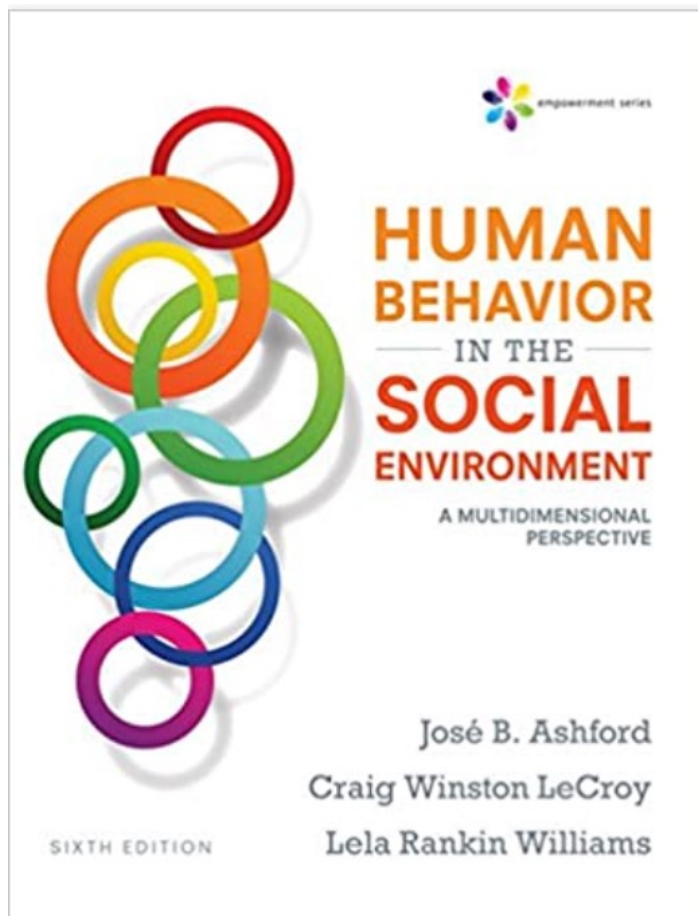


INTERSECTIONALITY THEORY

- In a social work context at the intersection of race/ethnicity, cultural and religious background, gender, gender identity, sexual orientation, and SES each child, family and community is unique and experiences ACEs differently.
- While navigating systems and institutions of racism and oppression that creates unfair structural conditions and accumulated challenges and barriers for BIPOC and LGBTQIA+, children, families and communities it is critical to practice:
 - Cultural-competency
 - Cultural-sensitivity
 - Cultural humility
- To avoid re-traumatizing clients who identify in these areas.



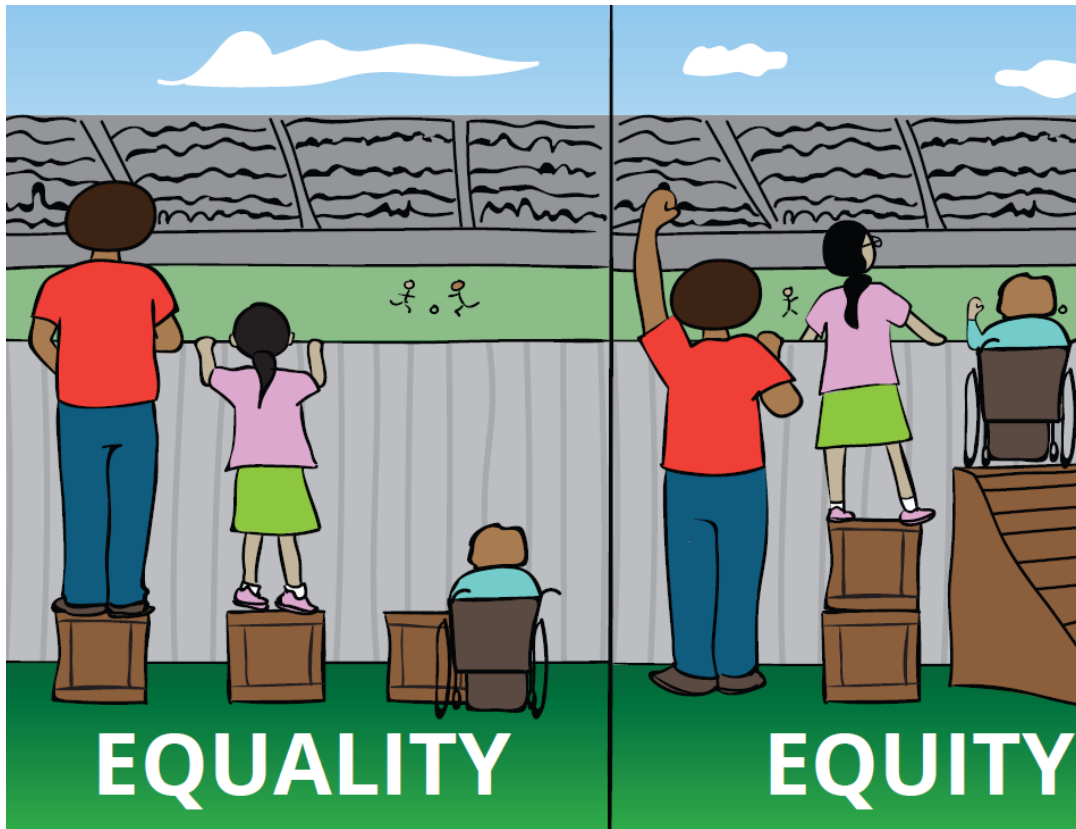
PERSON-IN-ENVIRONMENT THEORY



- Environmental factors influences a person's decision-making, actions and behaviors and subsequent life-path and life-trajectory.
- Assessing and Evaluating from a "Trauma-Informed Care" lens is critical to meet children, families and communities where they are at in the prevention, intervention, grief, loss and healing stages.



SOCIAL DETERMINANTS OF HEALTH



- **Access to Social Determinants of Health are Quality-of-life Indicators & Predictors of Health Outcomes:**
- **Generational cycles of poverty =**
 - **Unfair Structural conditions =**
 - **Accumulated Challenges & Barriers =**
 - **Access to Economic opportunity =**
 - **Higher income =**
 - **Upward mobility =**
 - **Affordable healthcare**
 - **Equitable education**
 - **Safe neighborhoods**
 - **Nutritious food**



TRAUMA-INFORMED CARE

As social work and behavioral health practitioners it is essential to assess and evaluate ACEs from a trauma-informed care lens to avoid re-traumatizing children, families and communities who have been affected by adverse childhood experiences in various ways.

Consider using the following approaches:

- Meet Me Where I Am (MMWIA)
- Positive Behavior Intervention Strategies & Supports (PBIS)
- Restorative Justice
- Resiliency as a Protective Factor
- Culture as a strength and not a deficit





Q&A – LINK TO RESOURCE DOCUMENT

[Click the link to learn more on HOW to facilitate conversations on DEIBJ in relation to ACES & the Intersectionality of Childhood Trauma in Agency Settings.](#)

To prevent:

- Divisiveness
- Compassion fatigue
- Burnout



TO LEARN MORE PLEASE VISIT:

- ✓ [Social Roots, LLC](#)
- ✓ “Evidenced-based practices” that are “culturally-relevant” to the needs of Black/African American & Native/Indigenous children, families and communities
- ✓ [Social Roots Foundation](#)
- ✓ Provides Educational Resources to Eliminate the Stigma and Shame associated with navigating health, mental health and counseling services in BIPOC communities.
- ✓ [Impact Action Network Advocacy Consulting Agency](#)
- ✓ “Educate to Liberate.”
- ✓ Provides Educational DEIBJ resources to make “Diversity, Equity, Inclusion, Belonging, & Justice a systemic and institutional priority and not a checkbox.”

