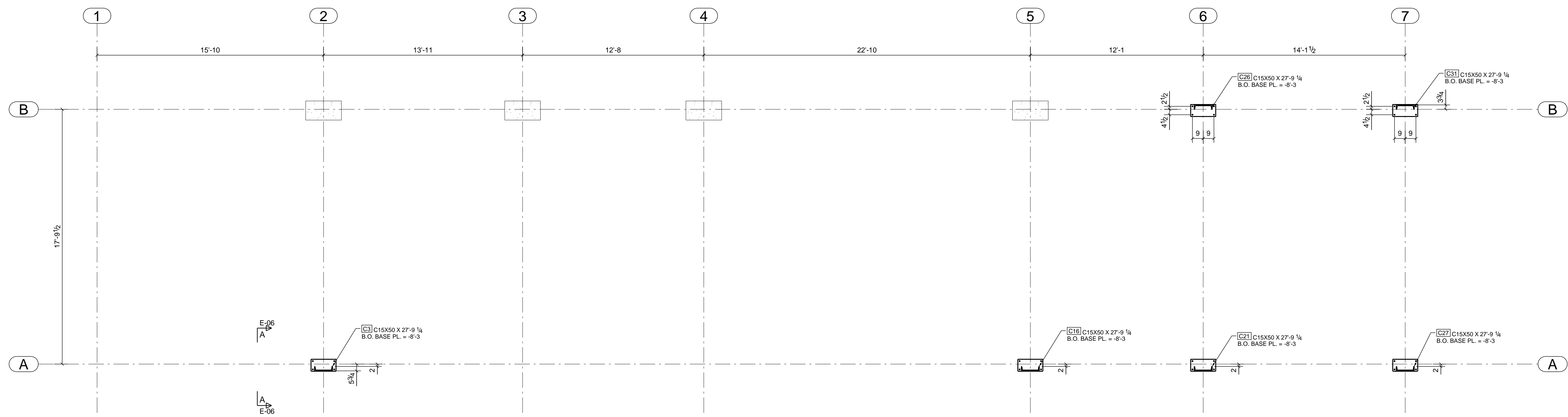
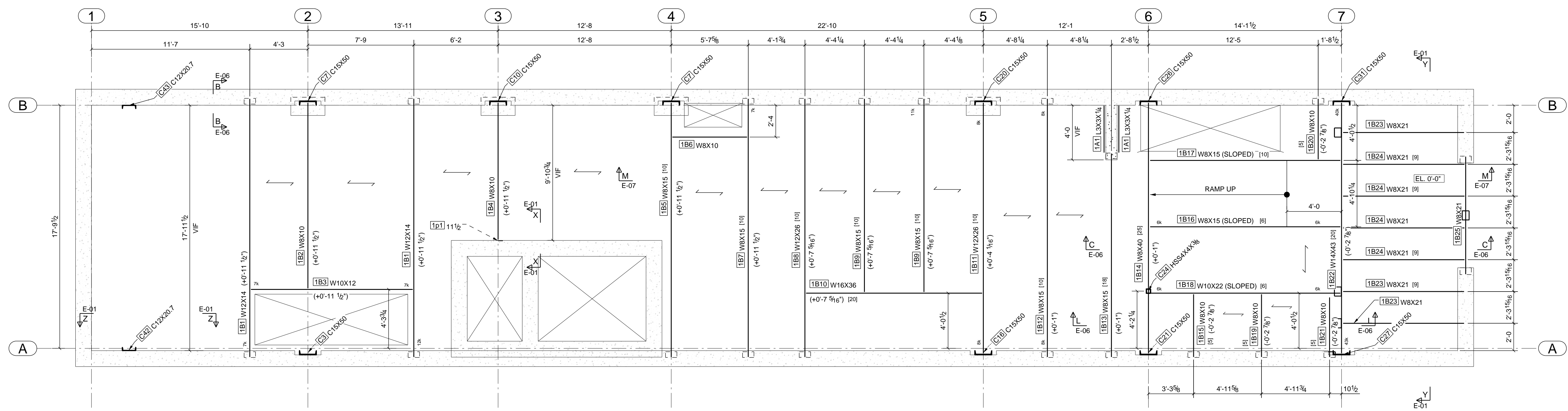


ISOMETRIC VIEW

AS BUILT  
DATE: 08/23/17

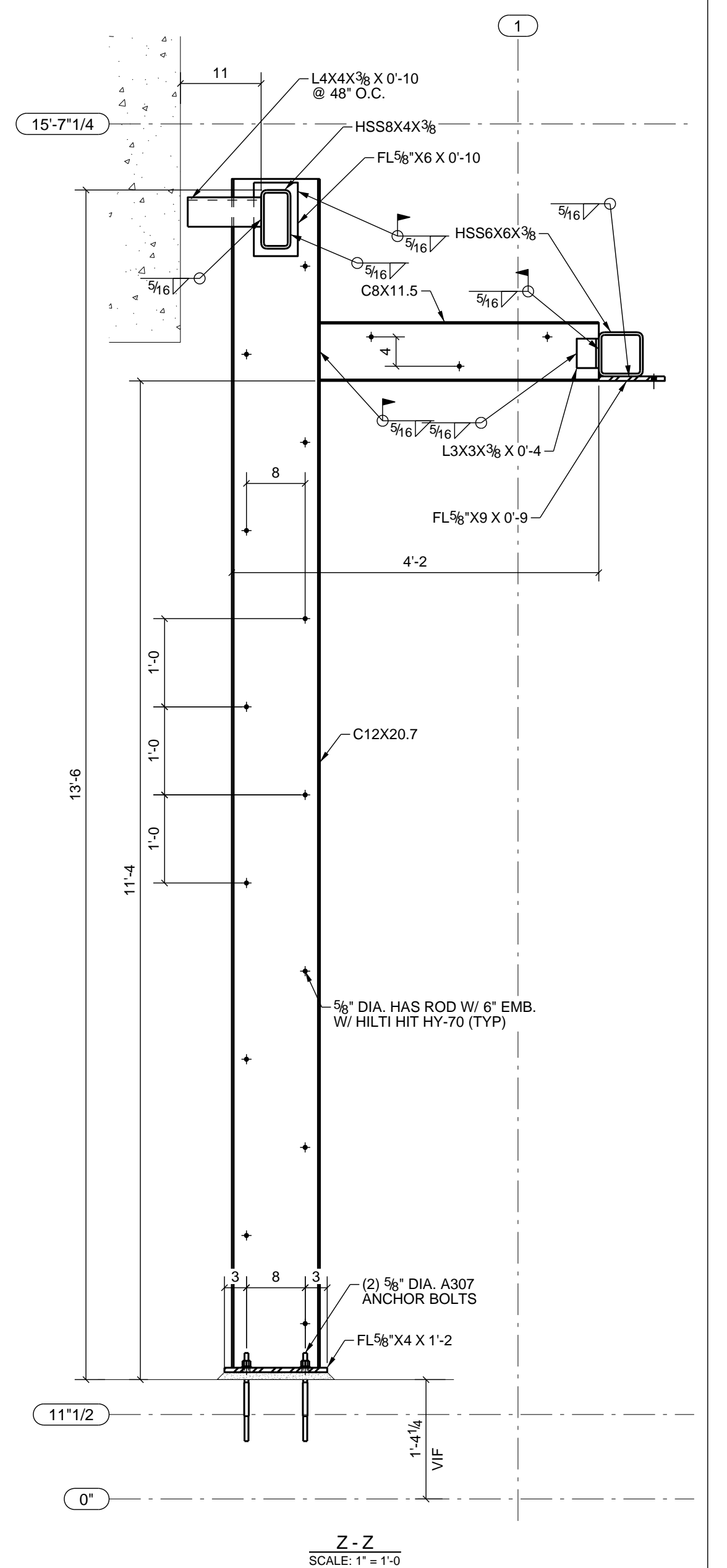
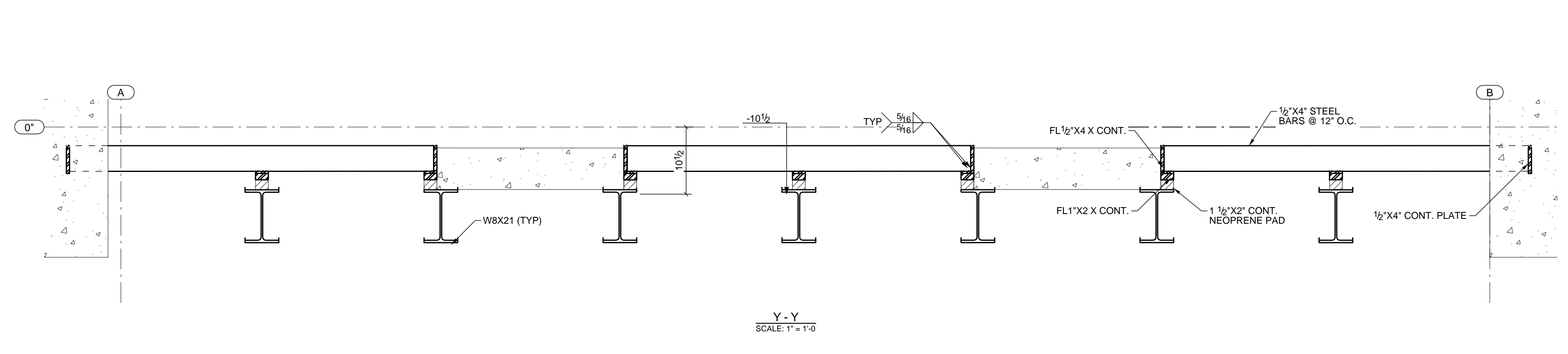
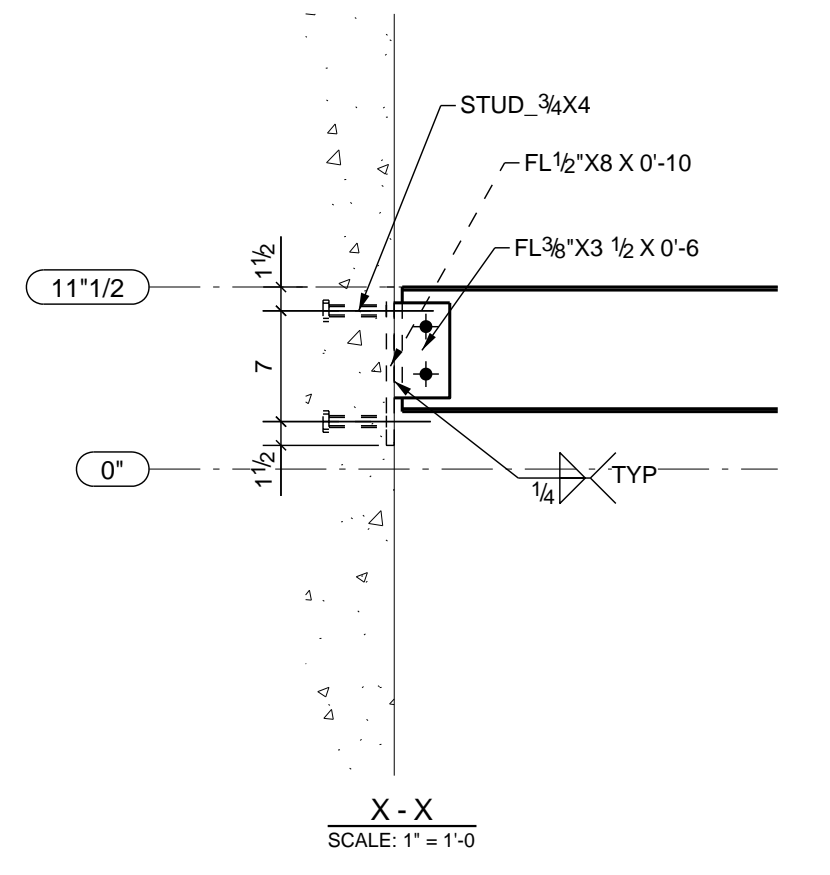


ANCHOR BOLT PLAN  
SCALE: 1:48



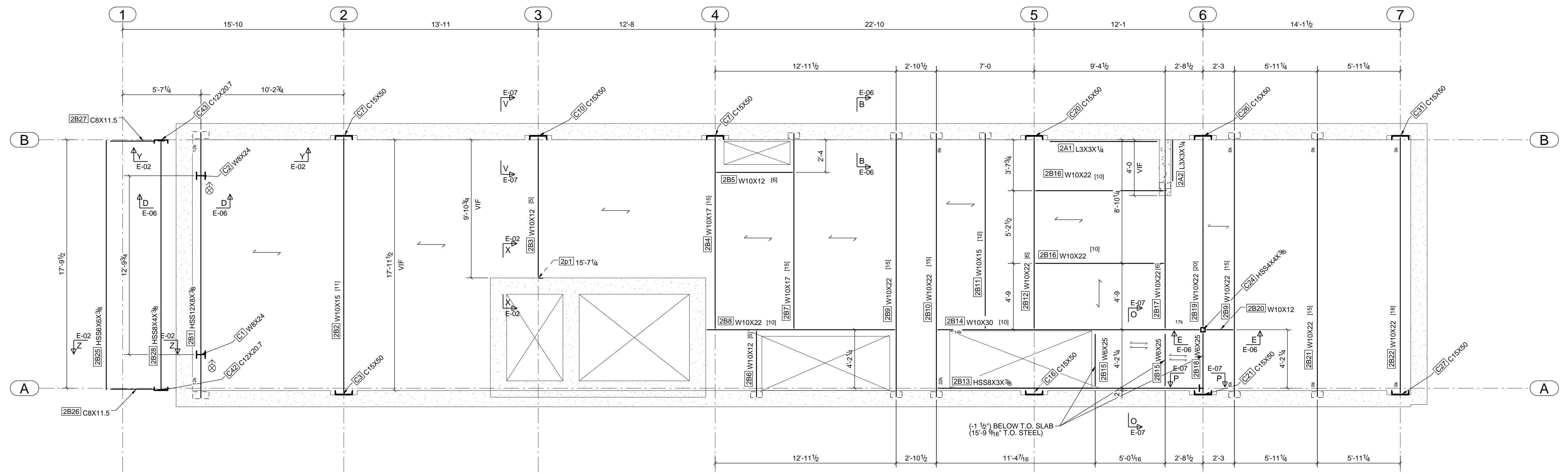
1ST FLOOR FRAMING PLAN  
SCALE: 1:48

NOTES:  
T.O. STEEL AT 1ST FLOOR = 0'-11 1/2" - U.O.N. (X'-X")  
[ ] NUMBER OF 3/8"x3/4" SHEAR STUDS  
← DECKING TO BE 1/2" 18 GAGE  
B 1/2"x4" FLAT STEEL BAR  
xxk BEAM SHEAR REACTION

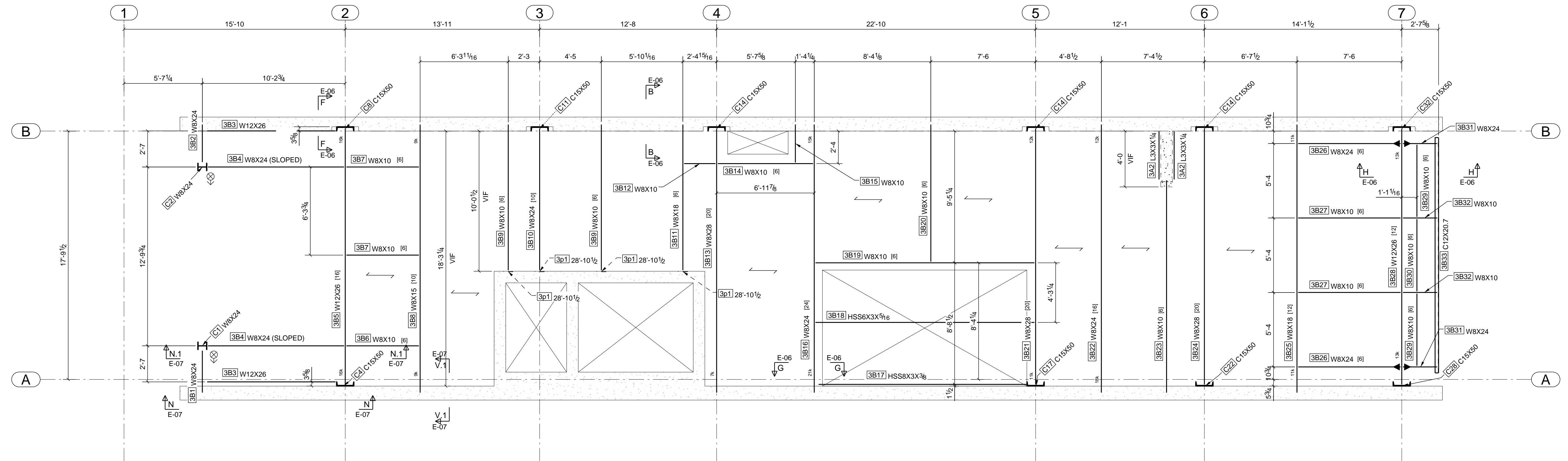


Z-Z  
SCALE: 1" = 1'-0"

AS BUILT  
DATE: 08/23/17

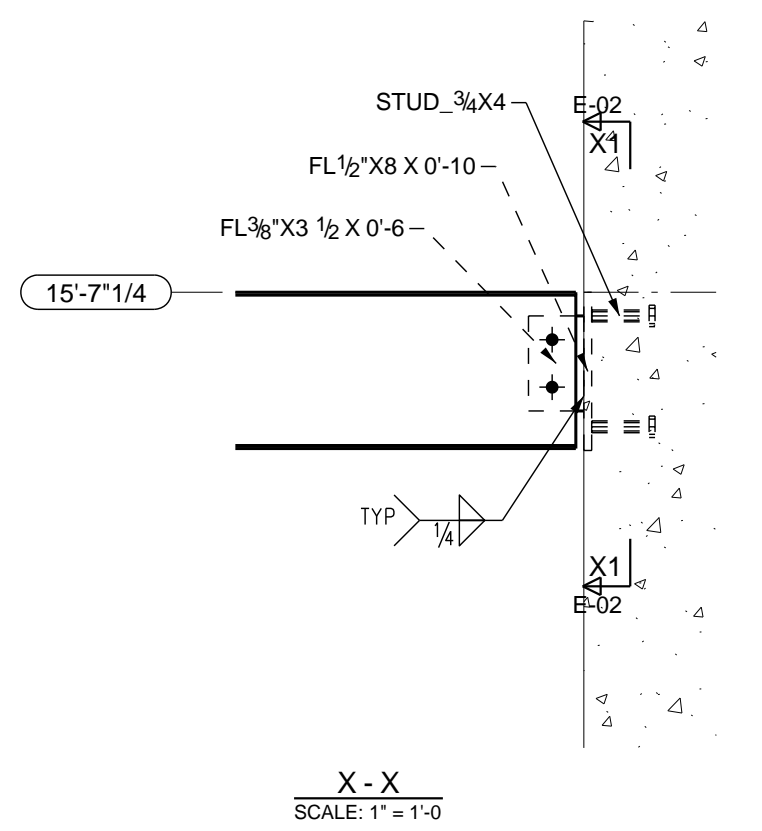


2ND FLOOR FRAMING PLAN  
SCALE: 1/4" = 1'-0"

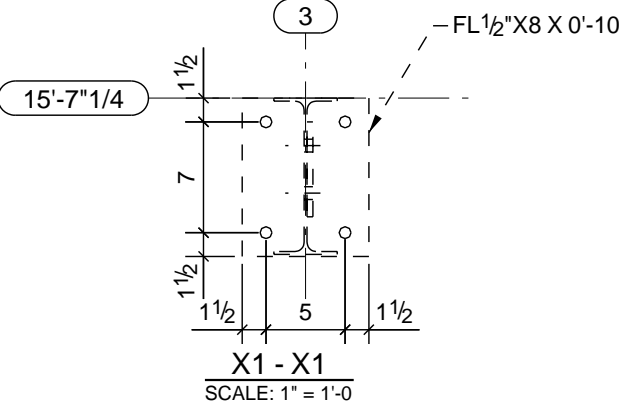


3RD FLOOR FRAMING PLAN  
SCALE: 1/4" = 1'-0"

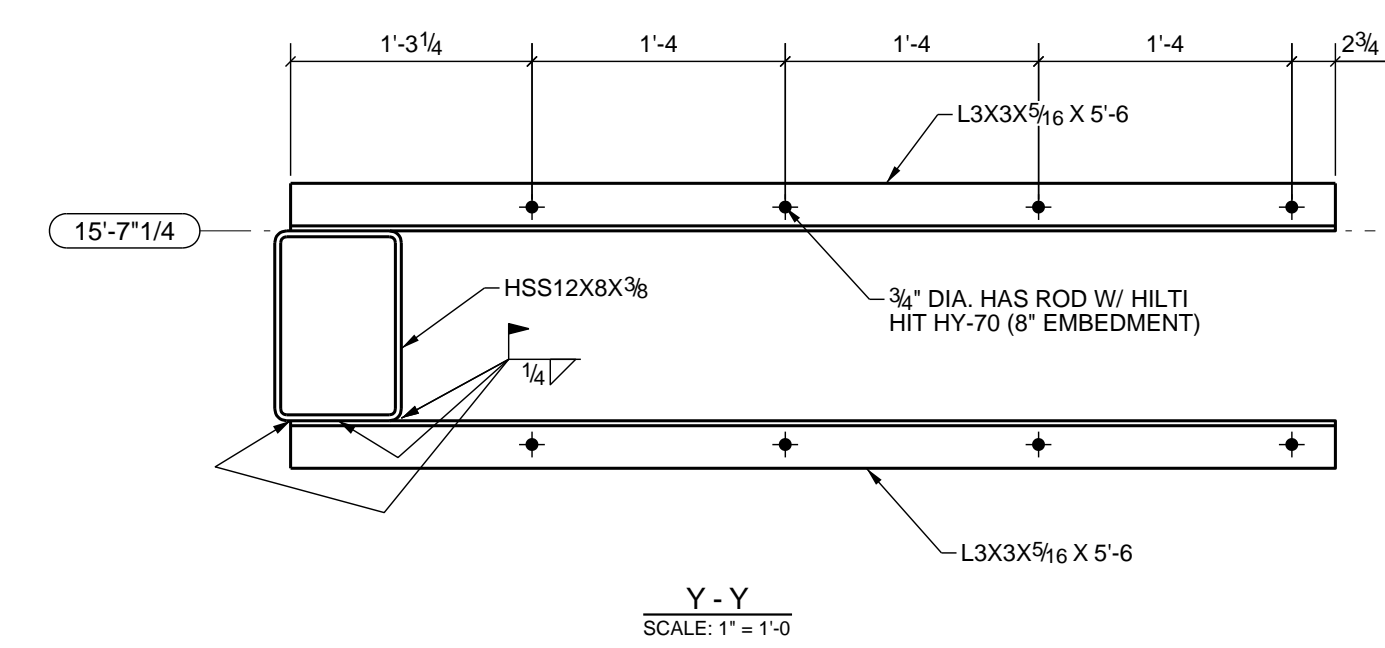
- NOTES:
- T.O. STEEL AT 2ND FLOOR = 15'-7 1/2"
  - T.O. STEEL AT 3RD FLOOR = 28'-10 1/2"
  - [.] NUMBER OF 3/4"x3/4" SHEAR STUDS
  - ← DECKING TO BE 1/2" 18 GAGE
  - ↔ ARCH. PLEASE CONFIRM WHAT SIZE/TYPE DECKING THIS IS
  - xxk BEAM SHEAR REACTION
  - ▶ MOMENT CONNECTION



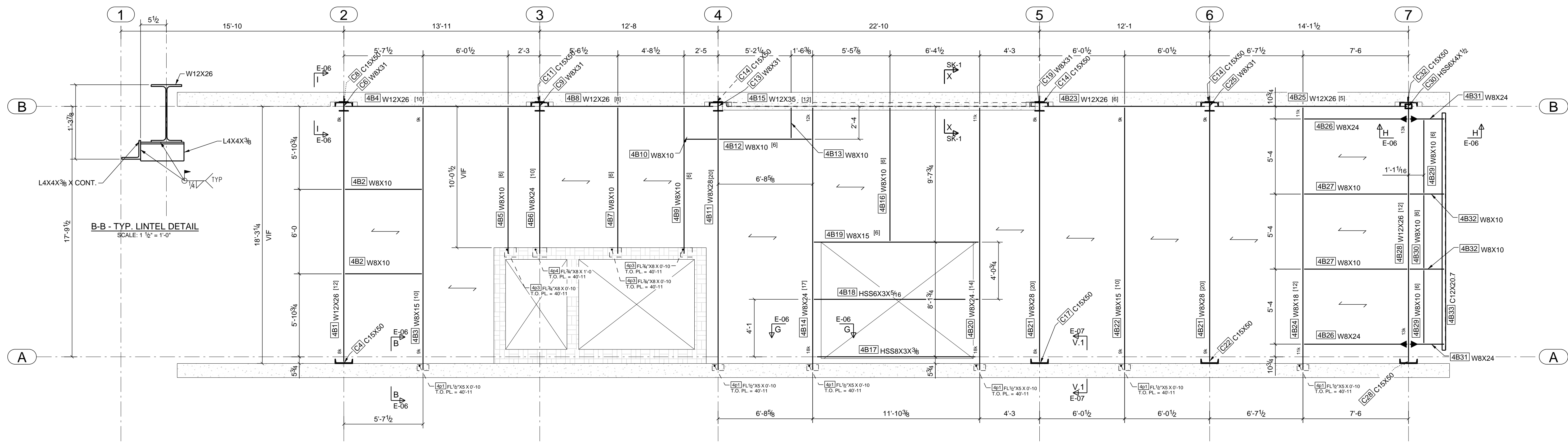
X - X  
SCALE: 1" = 1'-0"



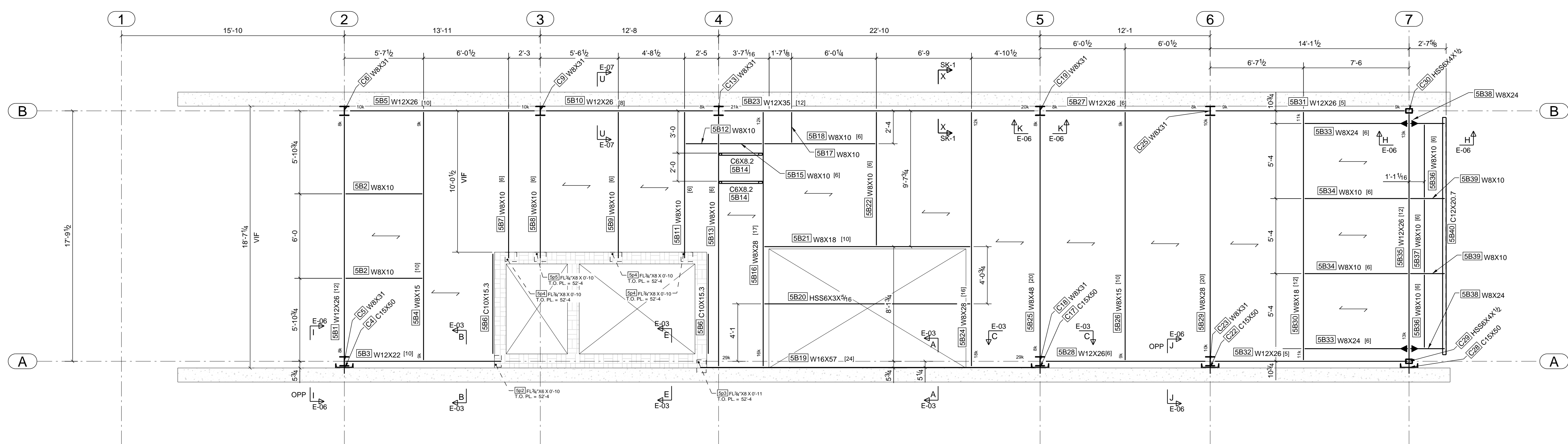
X1 - X1  
SCALE: 1" = 1'-0"



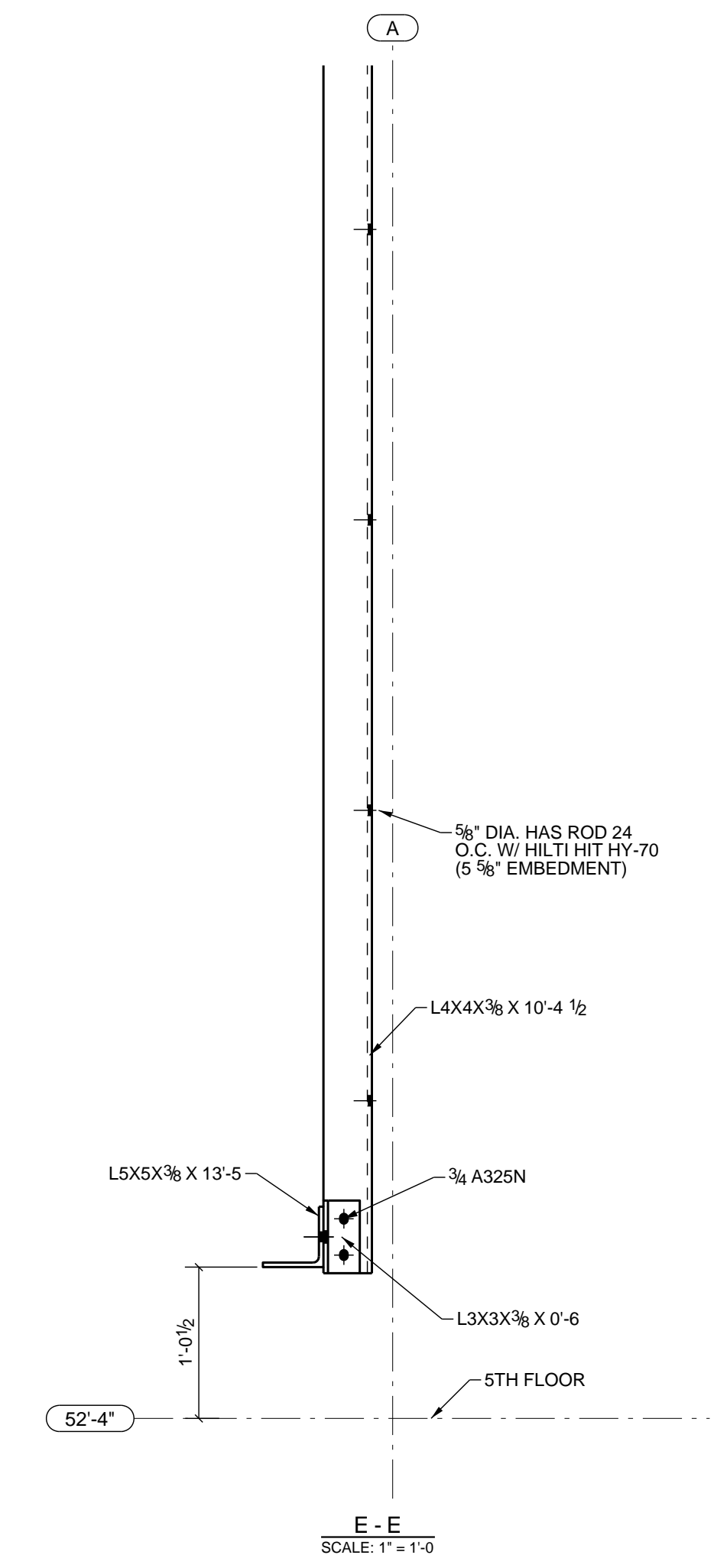
Y - Y  
SCALE: 1" = 1'-0"



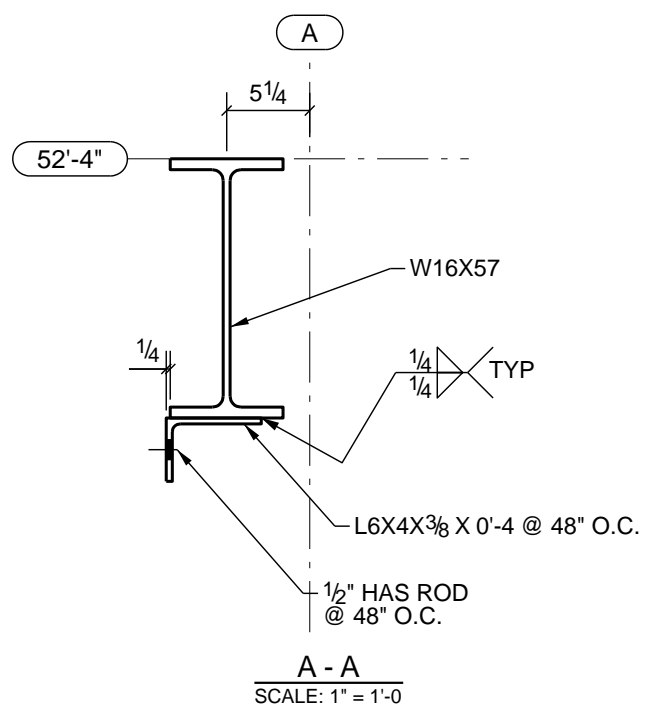
4TH FLOOR FRAMING PLAN  
SCALE: 1/4" = 1'-0"



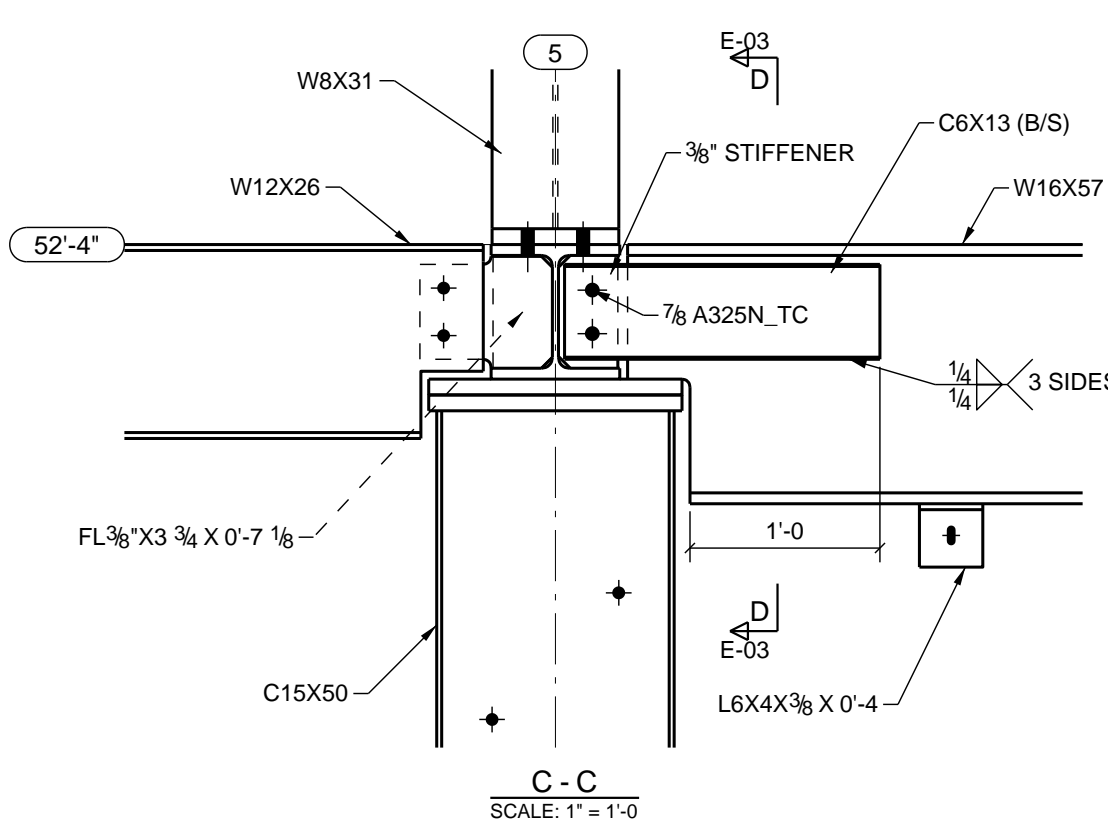
5TH FLOOR FRAMING PLAN  
SCALE: 1/4" = 1'-0"



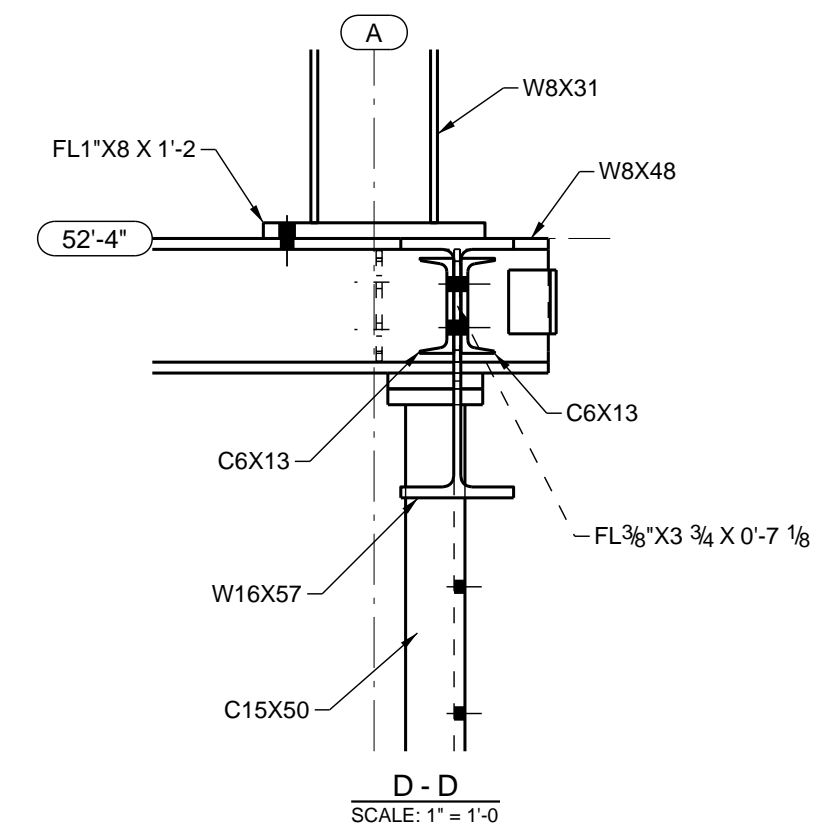
E-E  
SCALE: 1" = 1'-0"



A-A  
SCALE: 1" = 1'-0"



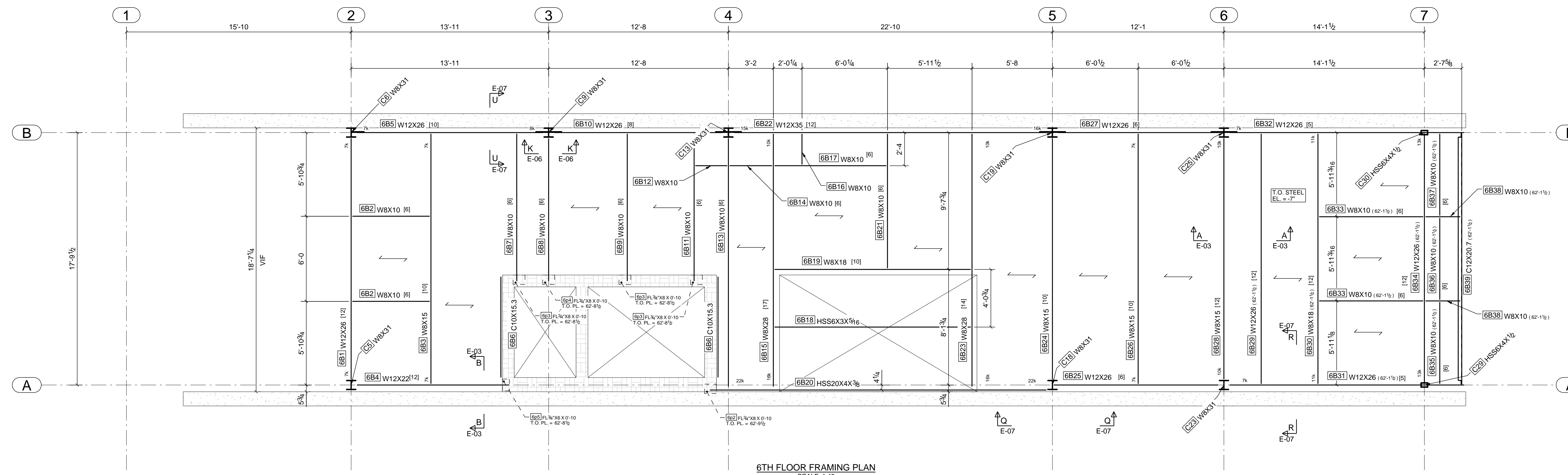
C-C  
SCALE: 1" = 1'-0"



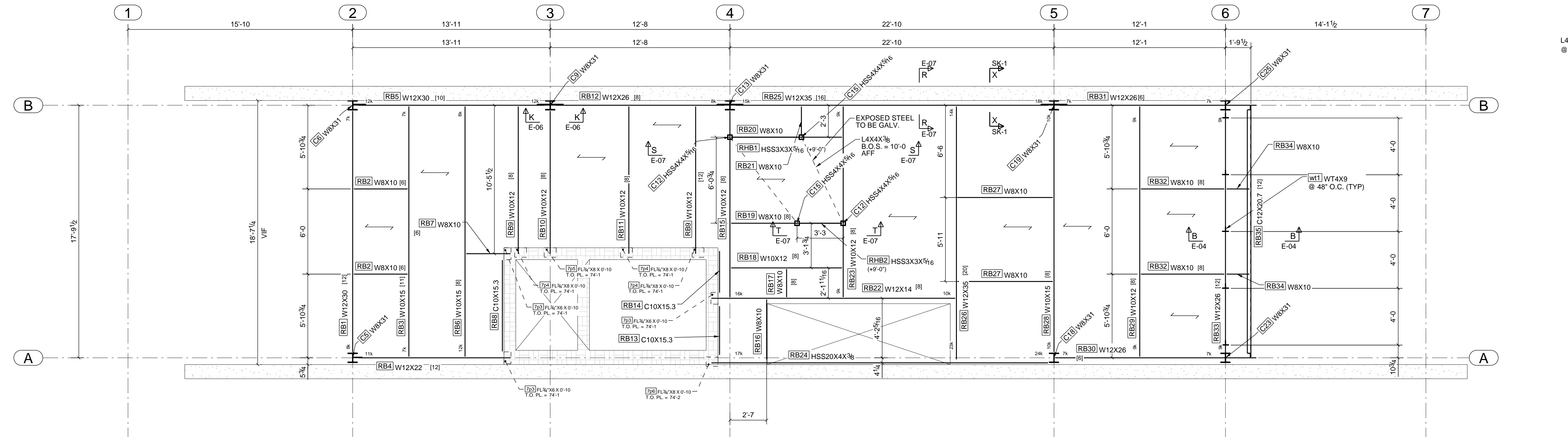
D-D  
SCALE: 1" = 1'-0"

- NOTES:
- T.O. STEEL AT 4TH FLOOR = 40'-11"
  - T.O. STEEL AT 5TH FLOOR = 52'-4"
  - [...] NUMBER OF 3/2"x3/2" SHEAR STUDS
  - DECKING TO BE 1/2" 18 GAGE
  - xxk BEAM SHEAR REACTION
  - ▶ MOMENT CONNECTION

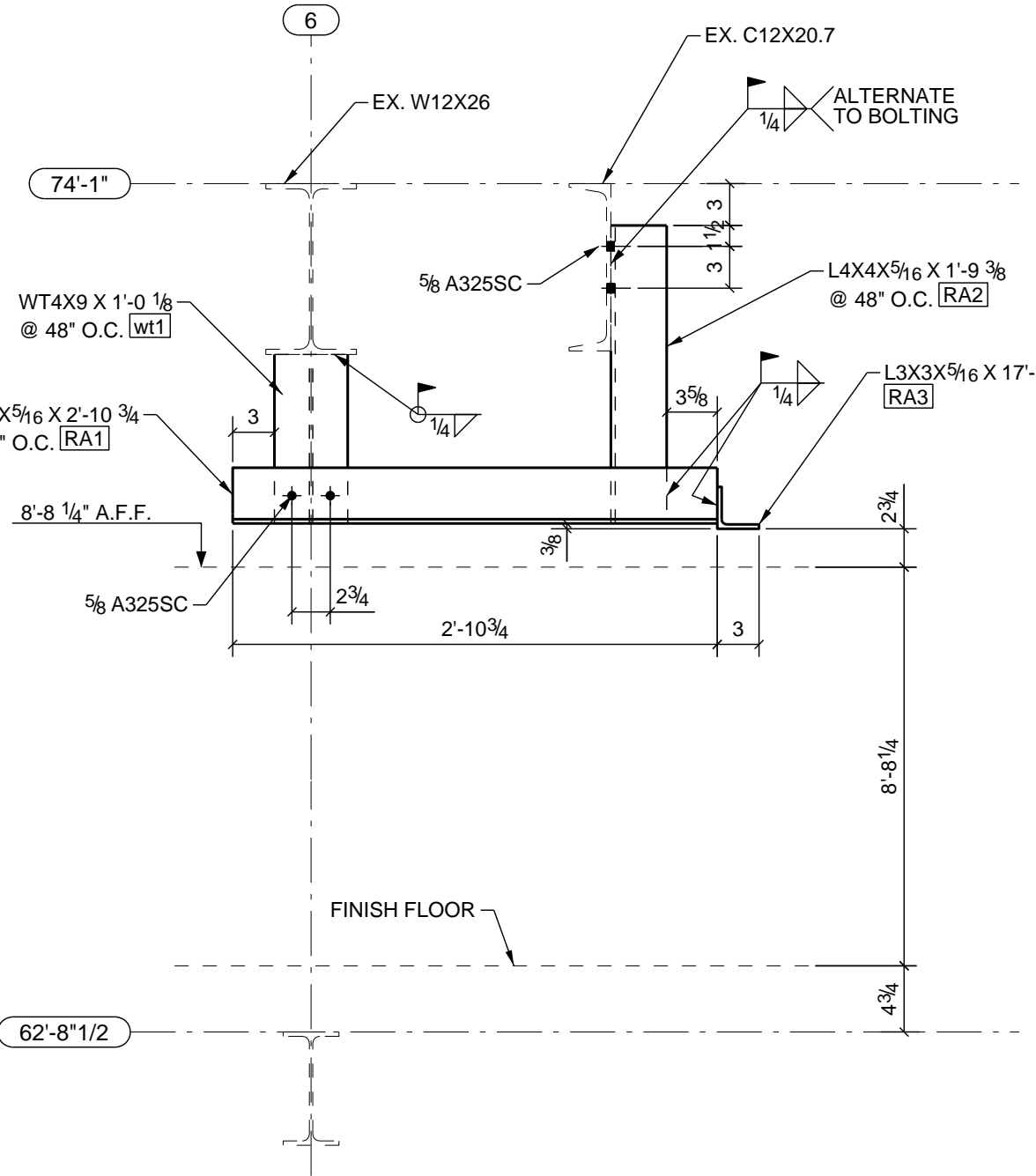




6TH FLOOR FRAMING PLAN  
SCALE: 1:48

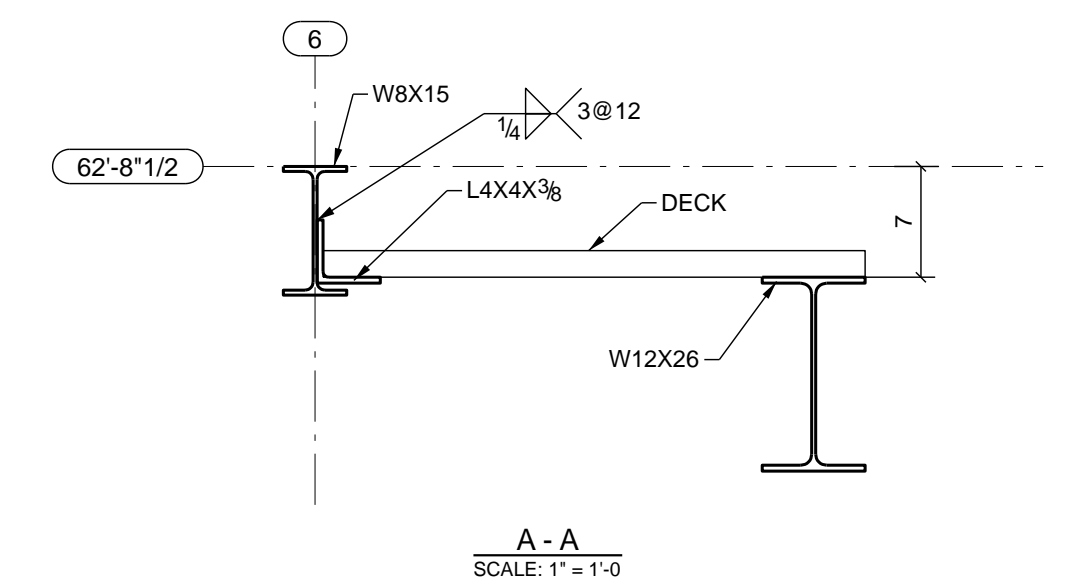


ROOF FRAMING PLAN  
SCALE: 1:48



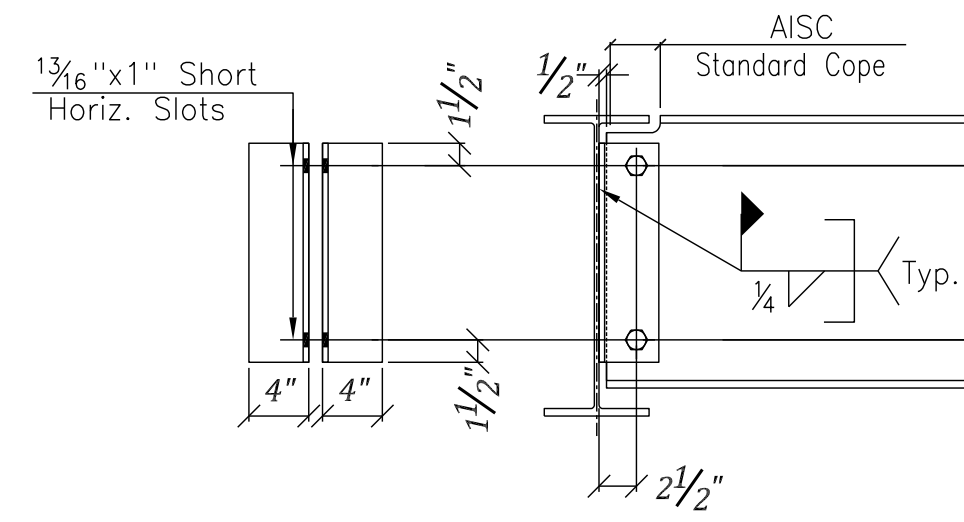
B - B  
SCALE: 1\"/>

- NOTES:**  
T.O. STEEL AT 6TH FLOOR = 62'-8 1/2"  
T.O. STEEL AT ROOF FLOOR = 74'-1"  
[ - ] NUMBER OF 3/4"x3/4" SHEAR STUDS  
← DECKING TO BE 1 1/2" 18 GAGE  
xxx BEAM SHEAR REACTION



A - A  
SCALE: 1\"/>

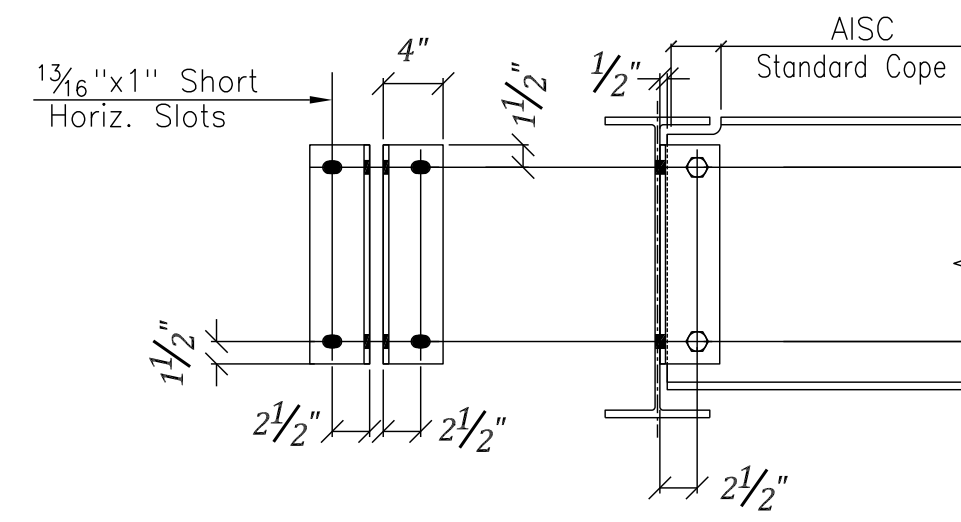
Notes:  
 All Holes  $1\frac{3}{16}$ " $\varnothing$  (U.N.O.)  
 All Bolts  $\frac{3}{4}$ " $\varnothing$  A325 SC  
 \* Check With Beam K Distance



Standard New Beam To Existing Beam Connection  
 (Bolted - Welded)

L. Size	Mark	L. Size	Mark
L.4x4 $\frac{3}{8}$ x2'-6" Lg.	W10 9@3"=2'-3"	W36x.Wx40	(150k)
L.4x4 $\frac{3}{8}$ x2'-3" Lg.	W9 8@3"=2'-0"	W36x	(135k)
L.4x4 $\frac{3}{8}$ x2'-0" Lg.	W8 7@3"=1'-9"	W30x.W33x	(120k)
L.4x4 $\frac{3}{8}$ x1'-9" Lg.	W7 6@3"=1'-6"	W24x.W27x.W30x	(105k)
L.4x4 $\frac{3}{8}$ x1'-6" Lg.	W6 5@3"=1'-3"	W21x.W24x.W27x	(90k)
L.4x4 $\frac{3}{8}$ x1'-3" Lg.	W5 4@3"=1'-0"	W18x.W21x.W24x	(75k)
L.4x4 $\frac{3}{8}$ x1'-0" Lg.	W4 3@3"=0'-9"	W16x.W18x	53k
L.4x4 $\frac{3}{8}$ x0'-11 $\frac{1}{2}$ " Lg.	W4.1 3@2 $\frac{1}{2}$ "=9"	W14x	(48k)
L.4x4 $\frac{3}{8}$ x0'-9" Lg.	W3 2@3"=0'-6"	W12x.W14x	(32k)
L.4x4 $\frac{3}{8}$ x0'-6" Lg.	W2 1@3"=0'-3"	W10x.W12x	(14.6k)
L.4x4 $\frac{3}{8}$ x0'-6" Lg.	W2.1 1@3"=0'-3"	W8x	(14.6k)

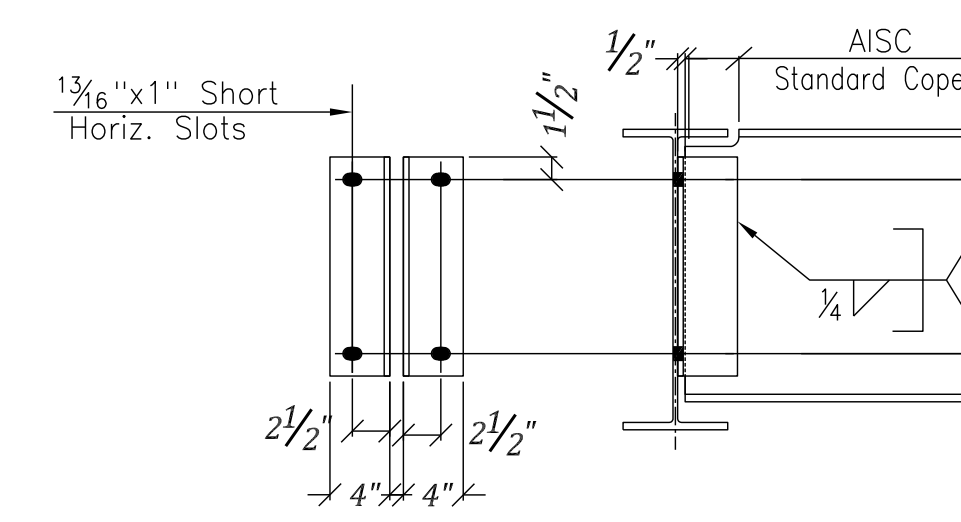
Notes:  
 All Holes  $1\frac{3}{16}$ " $\varnothing$  (U.N.O.)  
 All Bolts  $\frac{3}{4}$ " $\varnothing$  A325 SC  
 \* Check With Beam K Distance



Standard Beam To Beam / Beam To Column Connection  
 (For W8x31 & Larger Column Flange Connection)  
 (Bolted - Bolted)

L. Size	Mark	L. Size	Mark
L.4x4 $\frac{3}{8}$ x2'-6" Lg.	X10 9@3"=2'-3"	W36x.Wx40	(150k)
L.4x4 $\frac{3}{8}$ x2'-3" Lg.	X9 8@3"=2'-0"	W36x	(135k)
L.4x4 $\frac{3}{8}$ x2'-0" Lg.	X8 7@3"=1'-9"	W30x.W33x	(120k)
L.4x4 $\frac{3}{8}$ x1'-9" Lg.	X7 6@3"=1'-6"	W24x.W27x.W30x	(105k)
L.4x4 $\frac{3}{8}$ x1'-6" Lg.	X6 5@3"=1'-3"	W21x.W24x.W27x	(90k)
L.4x4 $\frac{3}{8}$ x1'-3" Lg.	X5 4@3"=1'-0"	W18x.W21x.W24x	(75k)
L.4x4 $\frac{3}{8}$ x1'-0" Lg.	X4 3@3"=0'-9"	W16x.W18x	(53k)
L.4x4 $\frac{3}{8}$ x0'-11 $\frac{1}{2}$ " Lg.	X4.1 3@2 $\frac{1}{2}$ "=9"	W14x	(48k)
L.4x4 $\frac{3}{8}$ x0'-9" Lg.	X3 2@3"=0'-6"	W12x.W14x	(32k)
L.4x4 $\frac{3}{8}$ x0'-6" Lg.	X2 1@3"=0'-3"	W10x.W12x	(14.6k)
L.4x4 $\frac{3}{8}$ x0'-6" Lg.	X2.1 1@3"=0'-3"	W8x	(14.6k)

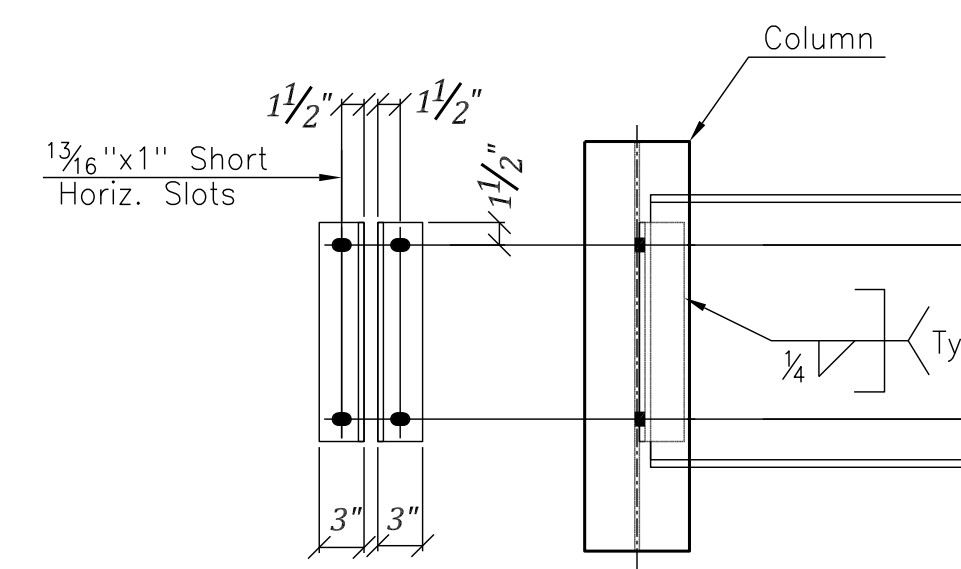
Notes:  
 All Holes  $1\frac{3}{16}$ " $\varnothing$  (U.N.O.)  
 All Bolts  $\frac{3}{4}$ " $\varnothing$  A325 SC  
 \* Check With Beam K Distance



Standard Beam To Beam / Beam To Column Connection  
 (For W10x & Larger Web Connection)  
 (Bolted - Weld)

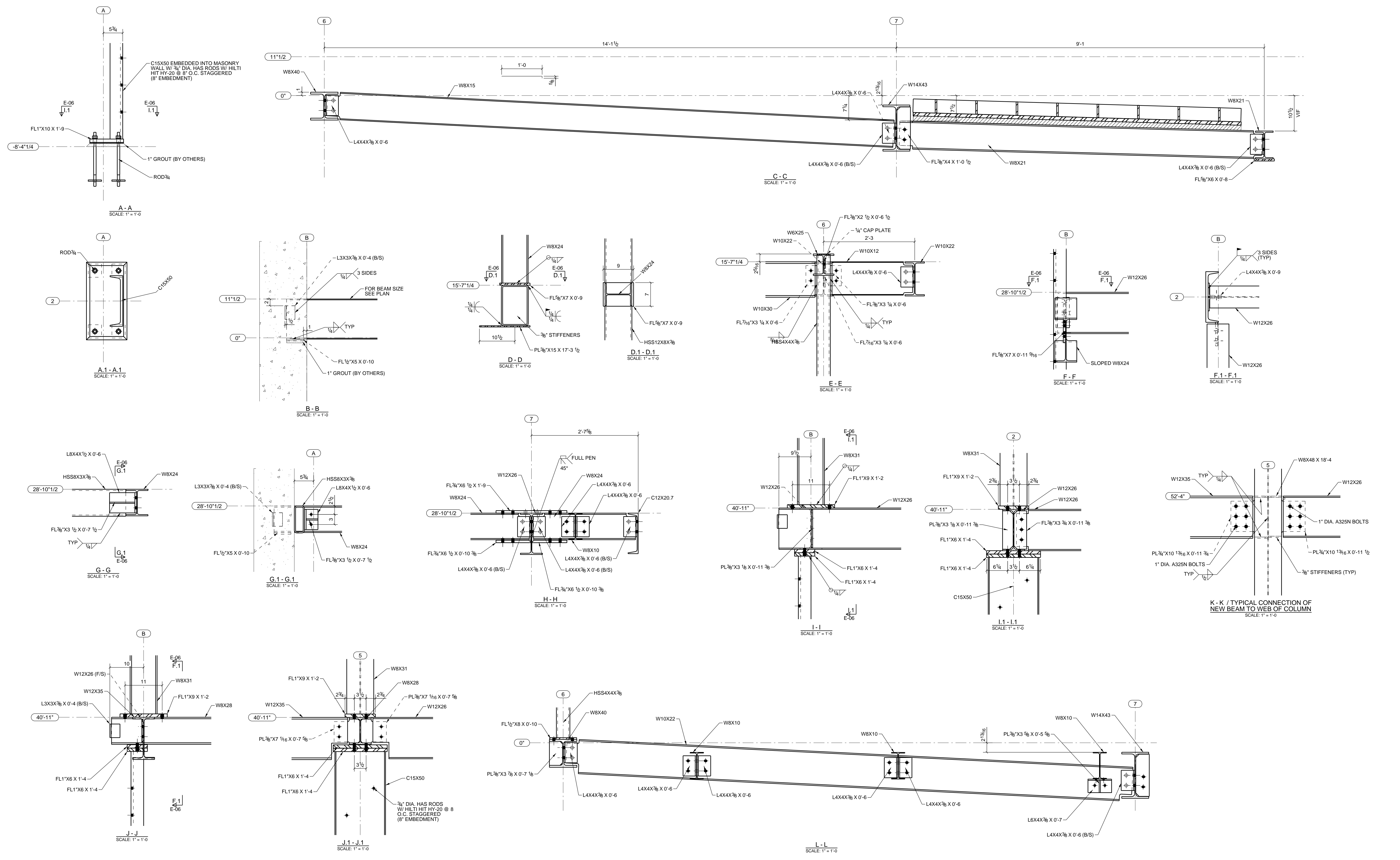
L. Size	Mark	L. Size	Mark
L.4x4 $\frac{3}{8}$ x2'-6" Lg.	Y10 9@3"=2'-3"	W36x.Wx40	(150k)
L.4x4 $\frac{3}{8}$ x2'-3" Lg.	Y9 8@3"=2'-0"	W36x	(135k)
L.4x4 $\frac{3}{8}$ x2'-0" Lg.	Y8 7@3"=1'-9"	W30x.W33x	(120k)
L.4x4 $\frac{3}{8}$ x1'-9" Lg.	Y7 6@3"=1'-6"	W24x.W27x.W30x	(105k)
L.4x4 $\frac{3}{8}$ x1'-6" Lg.	Y6 5@3"=1'-3"	W21x.W24x.W27x	(90k)
L.4x4 $\frac{3}{8}$ x1'-3" Lg.	Y5 4@3"=1'-0"	W18x.W21x.W24x	(75k)
L.4x4 $\frac{3}{8}$ x1'-0" Lg.	Y4 3@3"=0'-9"	W16x.W18x	(53k)
L.4x4 $\frac{3}{8}$ x0'-11 $\frac{1}{2}$ " Lg.	Y4.1 3@2 $\frac{1}{2}$ "=9"	W14x	(48k)
L.4x4 $\frac{3}{8}$ x0'-9" Lg.	Y3 2@3"=0'-6"	W12x.W14x	(32k)
L.4x4 $\frac{3}{8}$ x0'-6" Lg.	Y2 1@3"=0'-3"	W10x.W12x	(14.6k)
L.4x4 $\frac{3}{8}$ x0'-6" Lg.	Y2.1 1@3"=0'-3"	W8x	(14.6k)

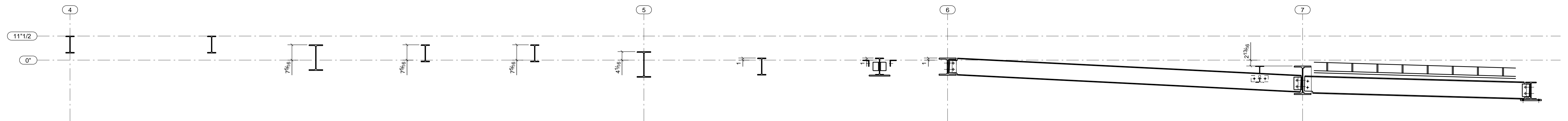
Notes:  
 All Holes  $1\frac{3}{16}$ " $\varnothing$  (U.N.O.)  
 All Bolts  $\frac{3}{4}$ " $\varnothing$  A325 SC  
 \* Check With Beam K Distance



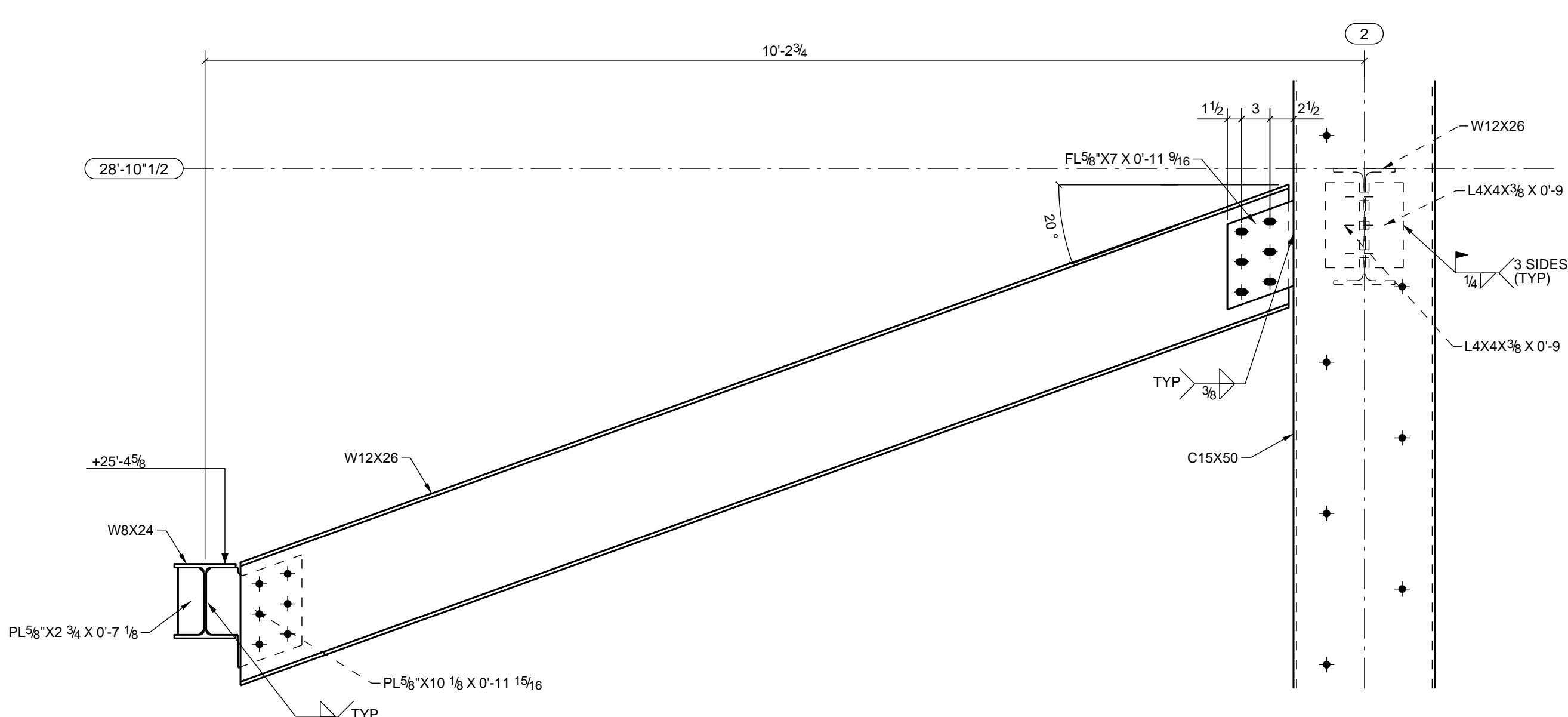
Standard Beam To Column Connection  
 (For W8x & Smaller Column Flange & Web Connection)  
 (Bolted - Weld)

L. Size	Mark	L. Size	Mark
L.3x3 $\frac{3}{8}$ x2'-5 $\frac{1}{2}$ " Lg.	Z10 9@3"=2'-3"	W36x.Wx40	(150k)
L.3x3 $\frac{3}{8}$ x2'-2 $\frac{1}{2}$ " Lg.	Z9 8@3"=2'-0"	W36x	(135k)
L.3x3 $\frac{3}{8}$ x1'-11 $\frac{1}{2}$ " Lg.	Z8 7@3"=1'-9"	W30x.W33x	(120k)
L.3x3 $\frac{3}{8}$ x1'-8 $\frac{1}{2}$ " Lg.	Z7 6@3"=1'-6"	W24x.W27x.W30x	(105k)
L.3x3 $\frac{3}{8}$ x1'-5 $\frac{1}{2}$ " Lg.	Z6 5@3"=1'-3"	W21x.W24x.W27x	(90k)
L.3x3 $\frac{3}{8}$ x1'-2 $\frac{1}{2}$ " Lg.	Z5 4@3"=1'-0"	W18x.W21x.W24x	(75k)
L.3x3 $\frac{3}{8}$ x0'-11 $\frac{1}{2}$ " Lg.	Z4 3@3"=0'-9"	W16x.W18x	(53k)
L.3x3 $\frac{3}{8}$ x0'-10 $\frac{1}{4}$ " Lg.	Z4.1 3@2 $\frac{1}{2}$ "=9"	W14x	(48k)
L.3x3 $\frac{3}{8}$ x0'-8 $\frac{1}{2}$ " Lg.	Z3 2@3"=0'-6"	W12x.W14x	(32k)
L.3x3 $\frac{3}{8}$ x0'-5 $\frac{1}{2}$ " Lg.	Z2 1@3"=0'-3"	W10x.W12x	(14.6k)
L.3x3 $\frac{3}{8}$ x0'-5 $\frac{1}{2}$ " Lg.	Z2.1 1@3"=0'-3"	W8x	(14.6k)

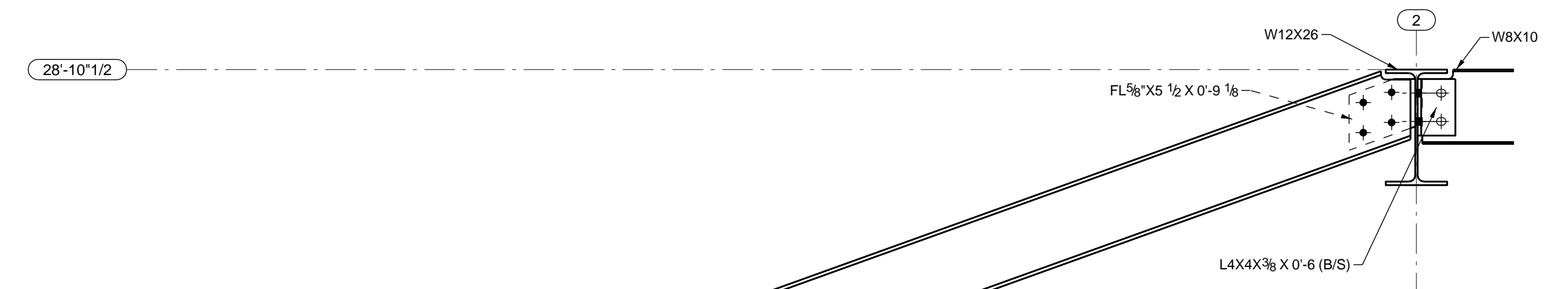




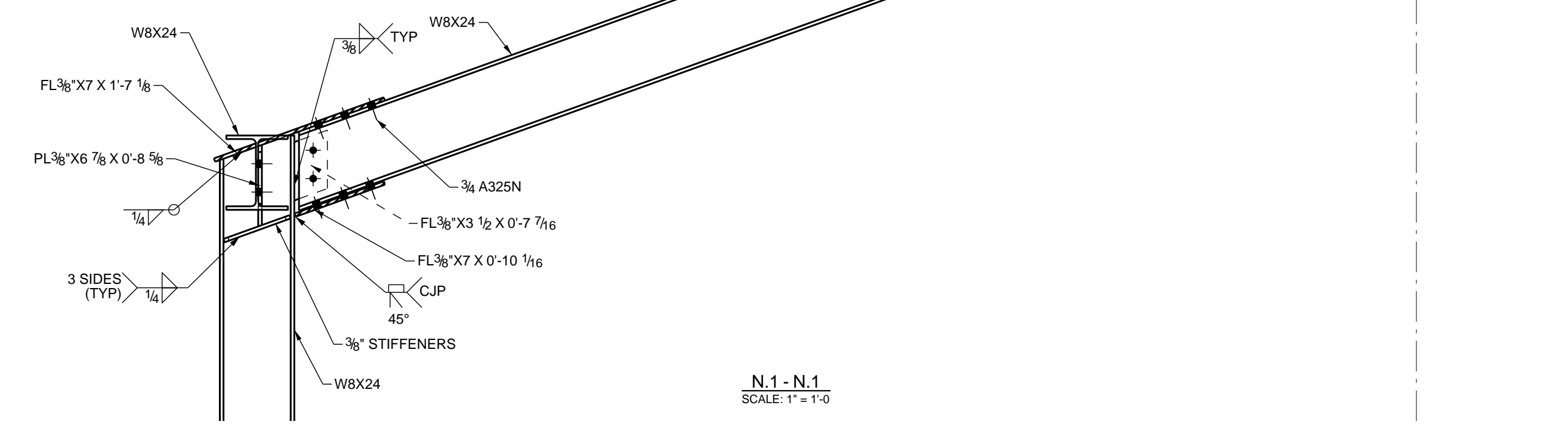
M-M  
SCALE: 1/2" = 1'-0"



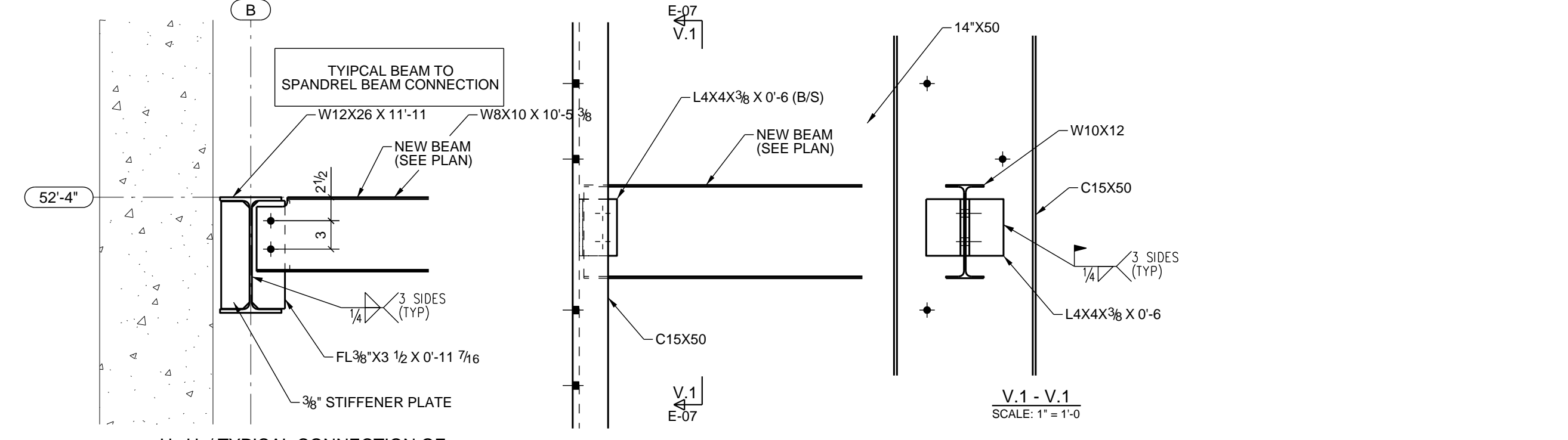
N-N  
SCALE: 1" = 1'-0"



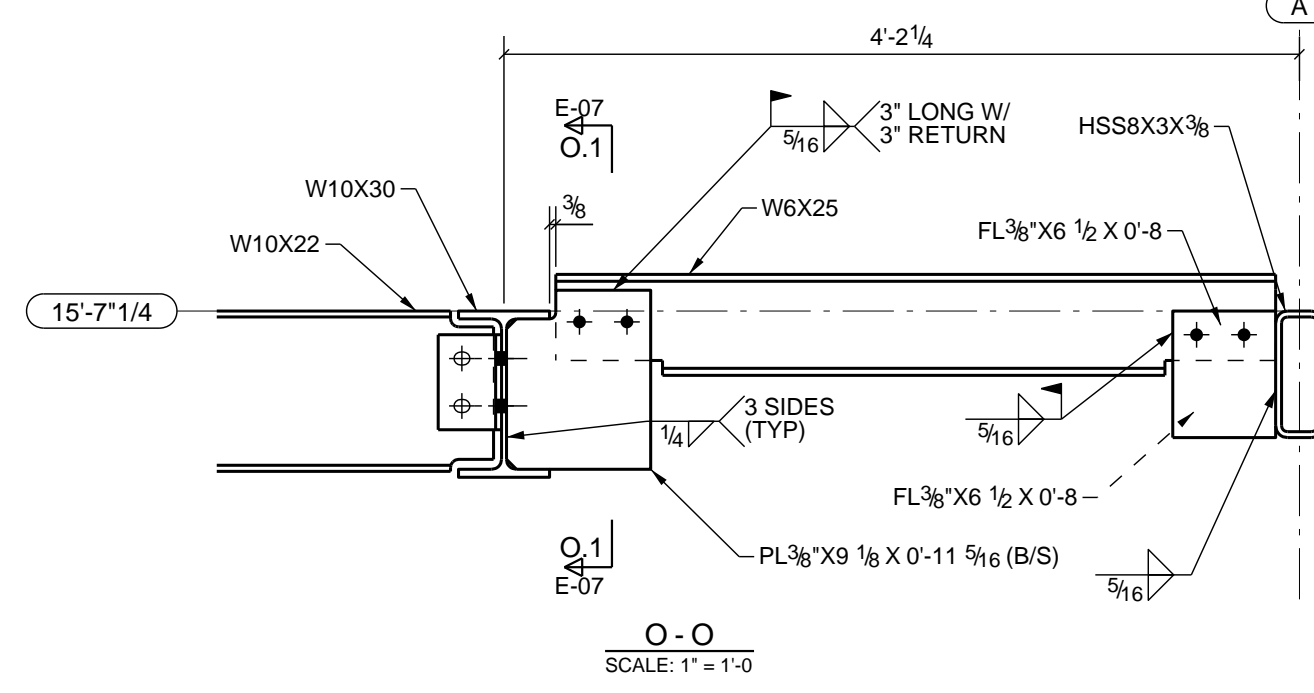
N.1-N.1  
SCALE: 1" = 1'-0"



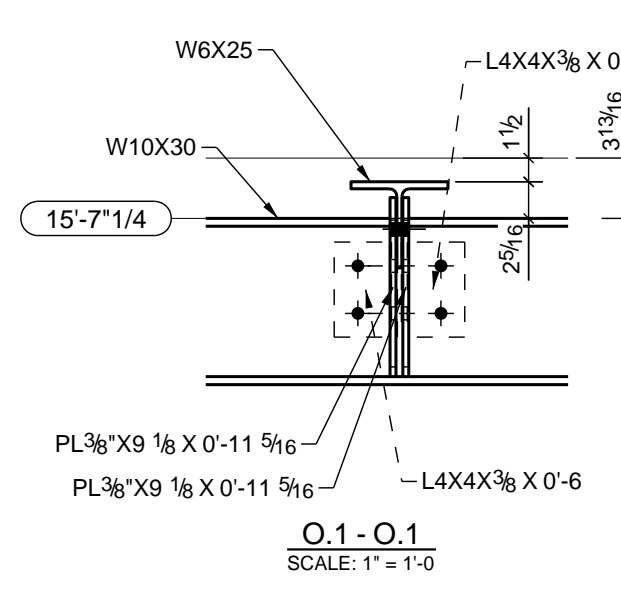
U-U / TYPICAL CONNECTION OF NEW BEAM INTO SPANDREL BEAM  
SCALE: 1" = 1'-0"



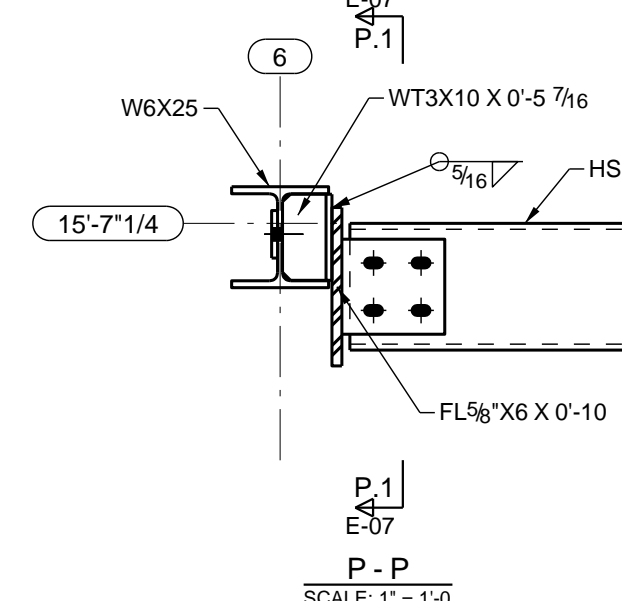
V-V / TYPICAL CONNECTION OF NEW BEAM TO C10  
SCALE: 1" = 1'-0"



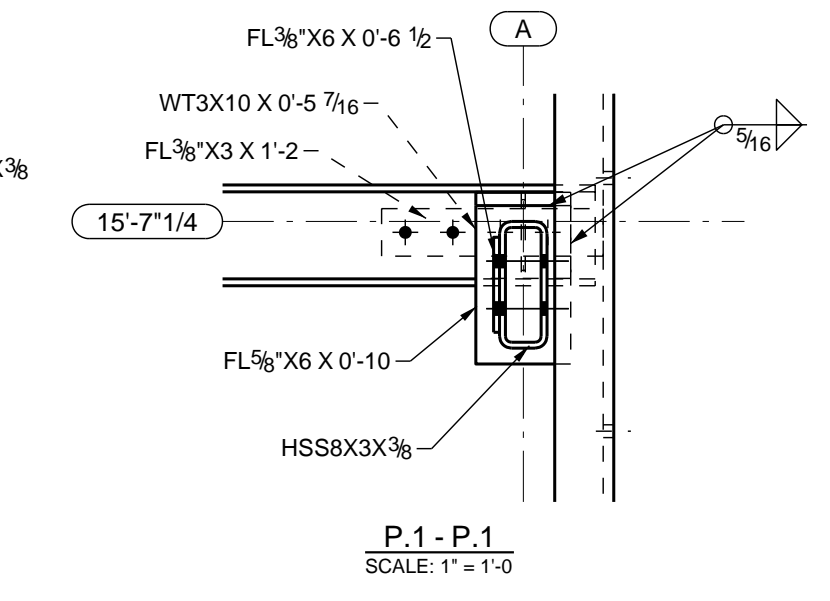
O-O  
SCALE: 1" = 1'-0"



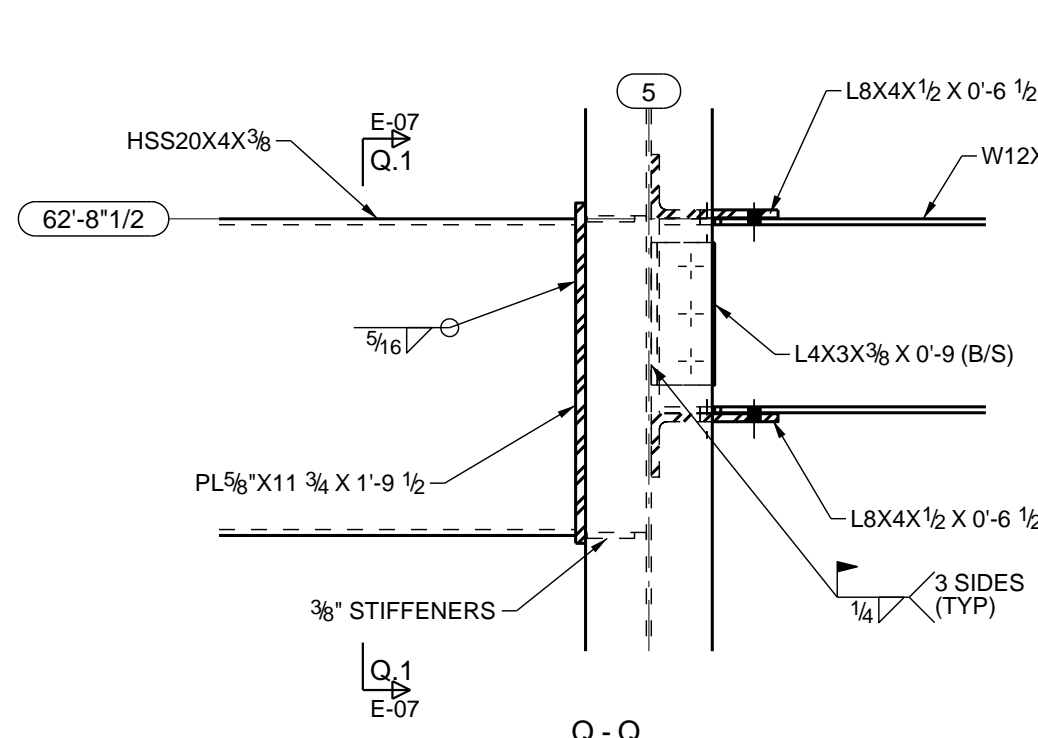
O.1-O.1  
SCALE: 1" = 1'-0"



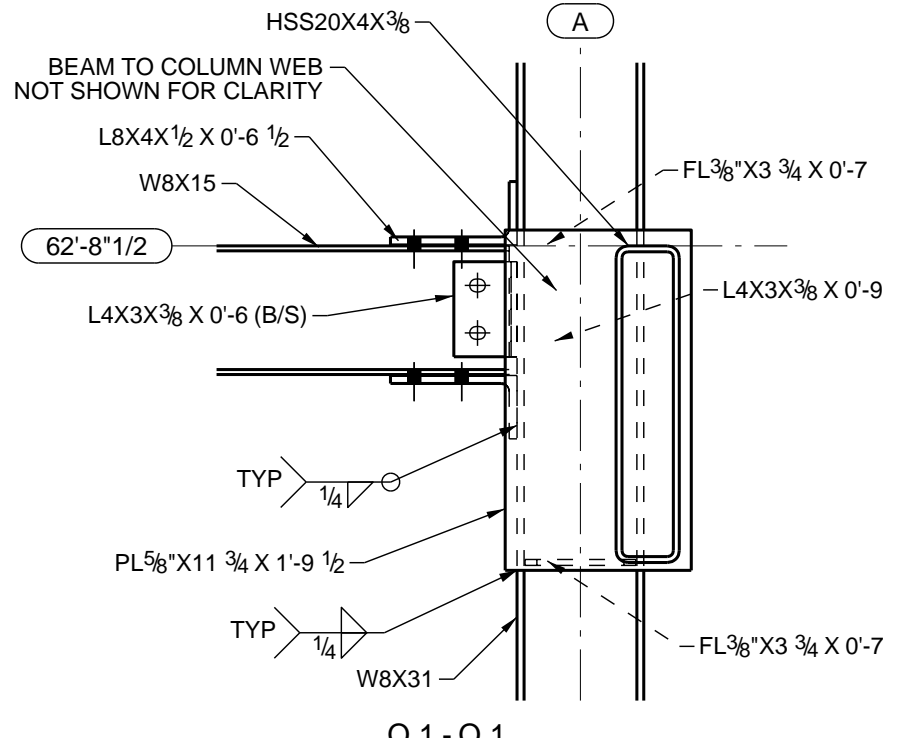
P.1-P.1  
SCALE: 1" = 1'-0"



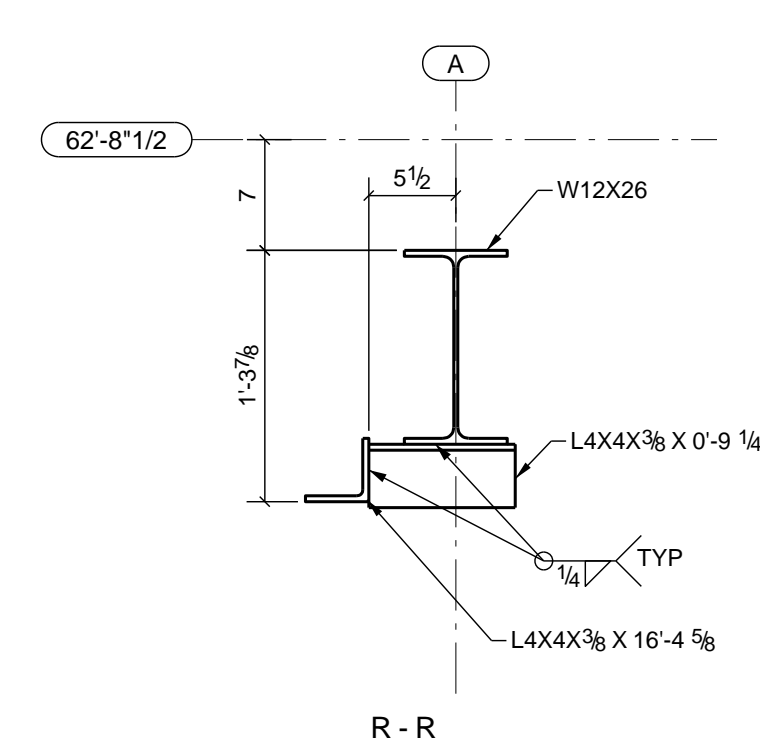
P.1-P.1  
SCALE: 1" = 1'-0"



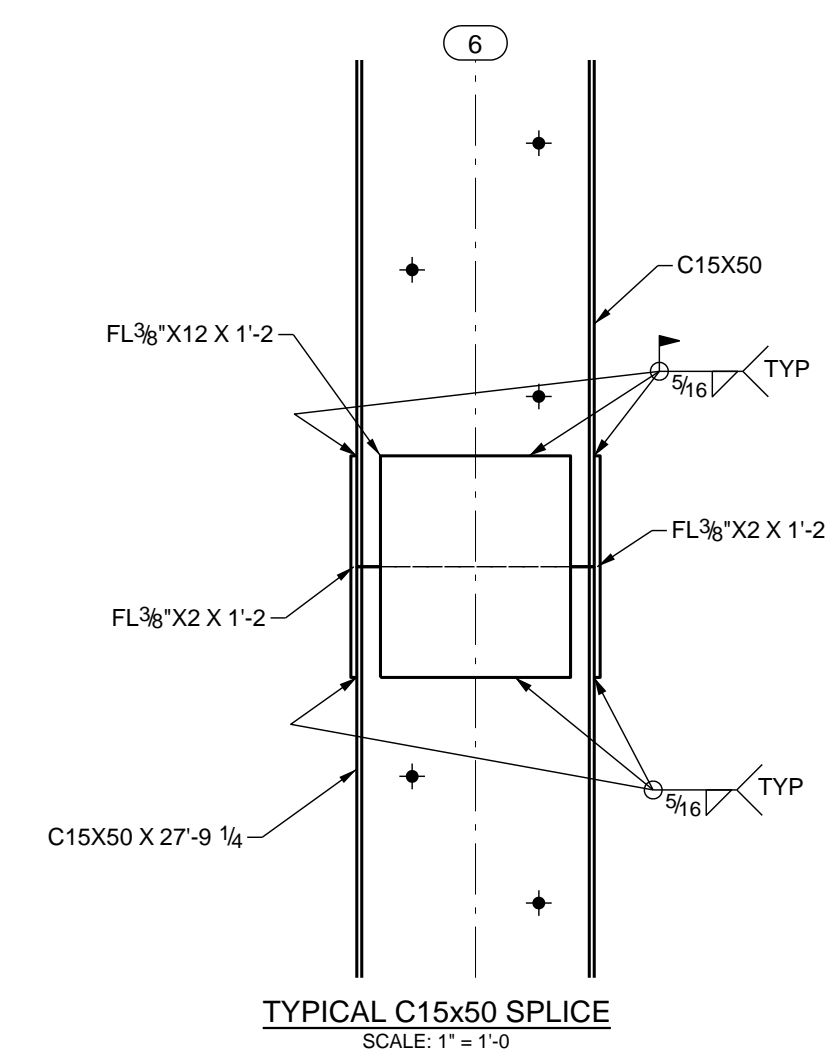
Q-Q  
SCALE: 1" = 1'-0"



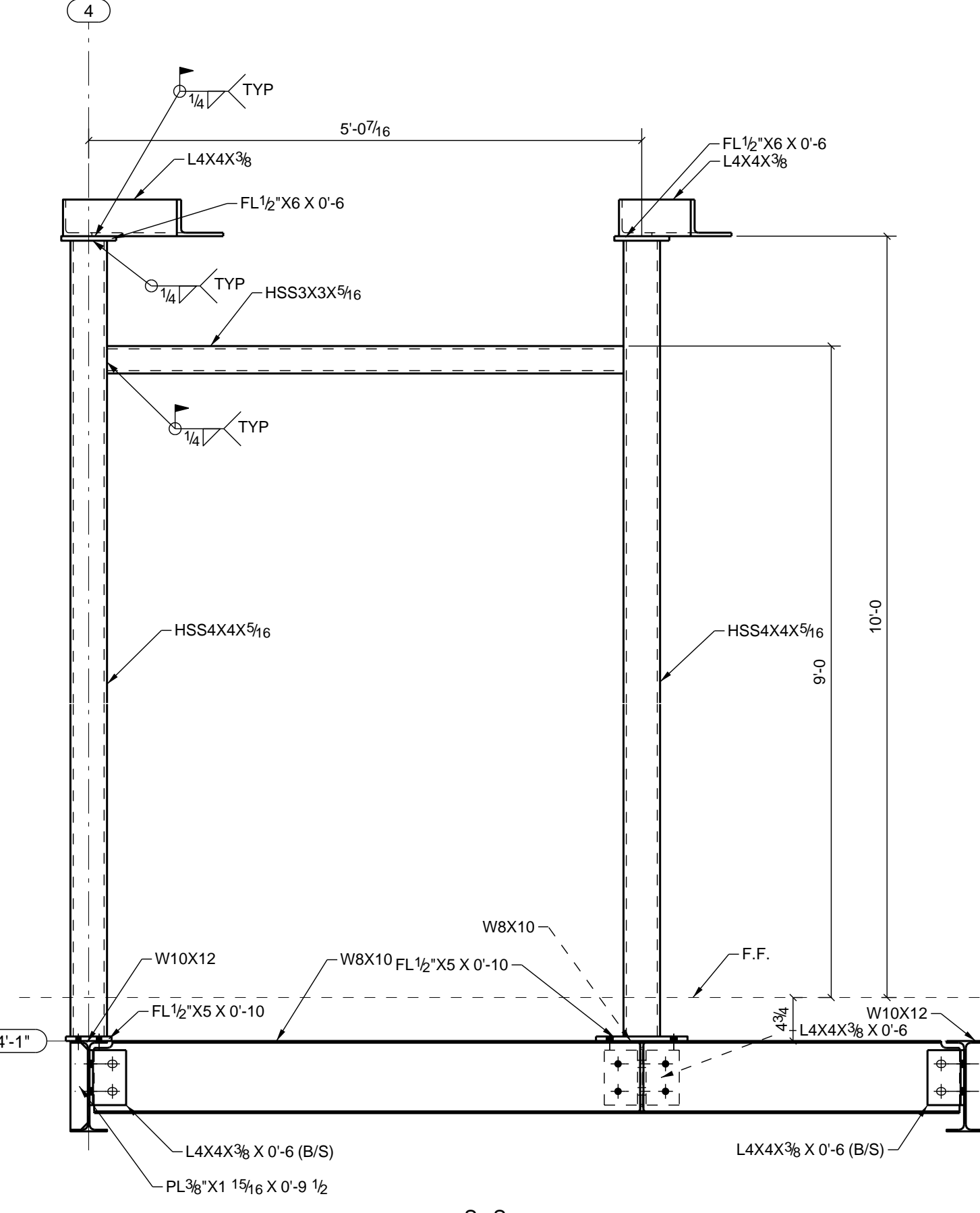
Q.1-Q.1  
SCALE: 1" = 1'-0"



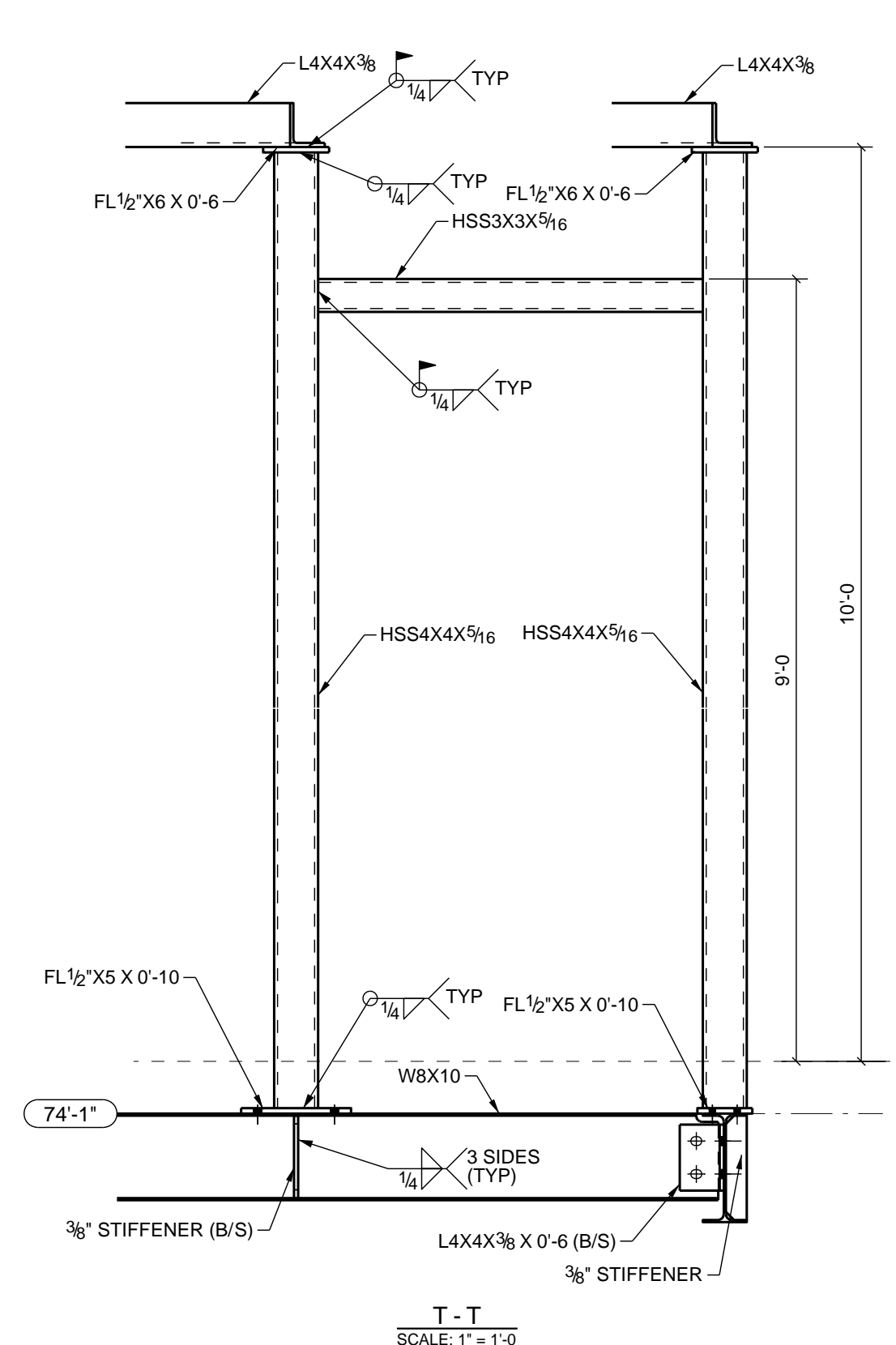
R-R  
SCALE: 1" = 1'-0"



TYPICAL C15X50 SPLICE  
SCALE: 1" = 1'-0"



S-S  
SCALE: 1" = 1'-0"



T-T  
SCALE: 1" = 1'-0"

**AS BUILT**  
DATE: 08/23/17